

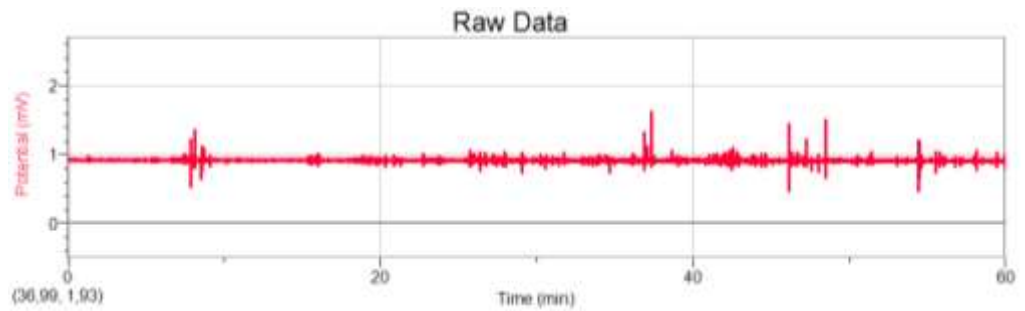
APPENDICES

A. Muscle Activity Signal Records Using Electromyograph

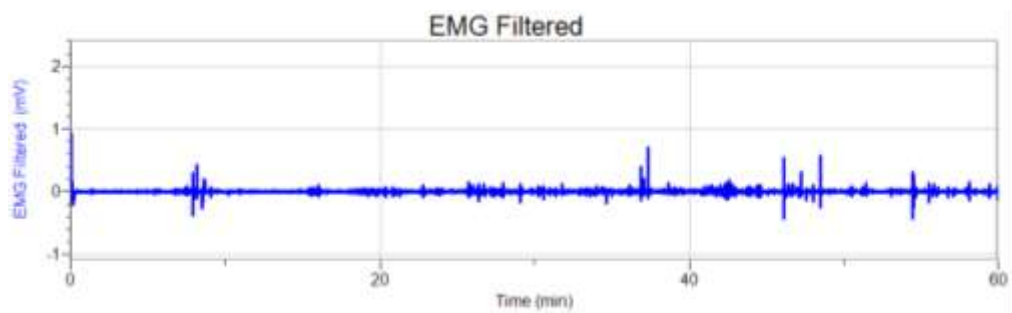
1. Respondent 1

a. Off

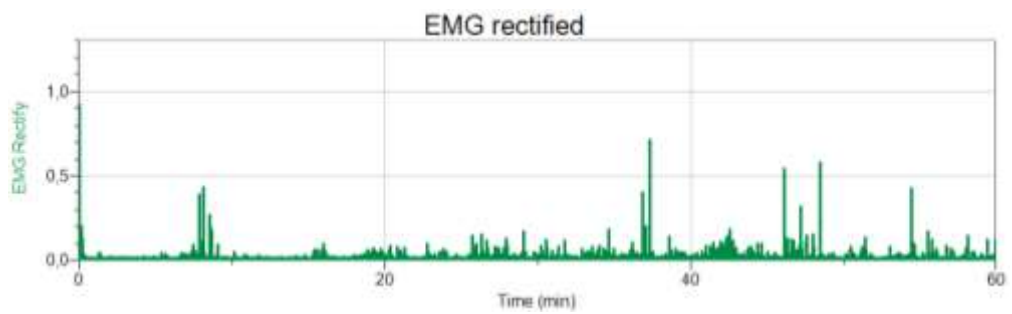
- Raw Signal



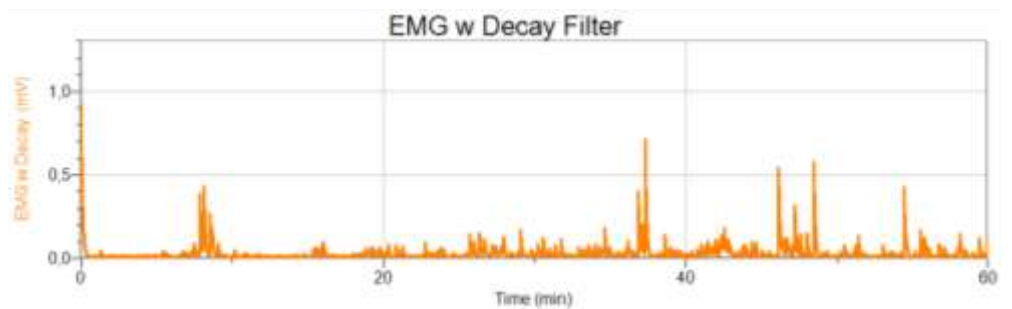
- EMG Filtered



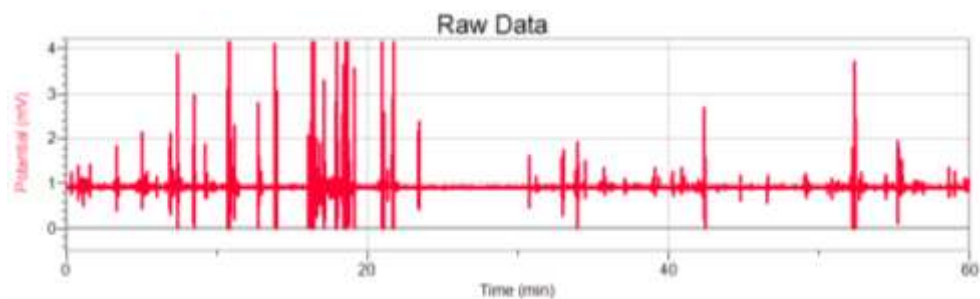
- EMG Rectify



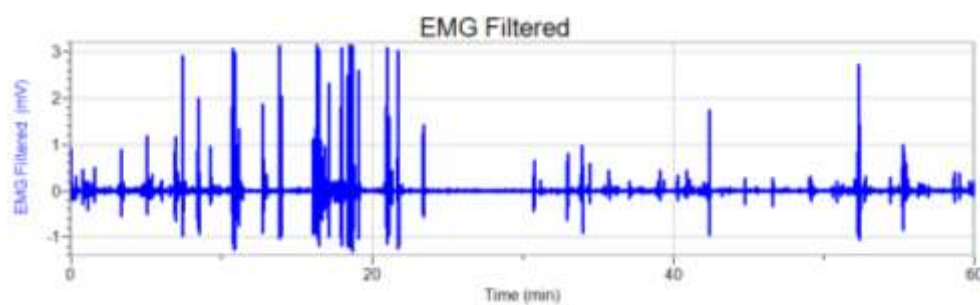
- EMG with Decay Filter



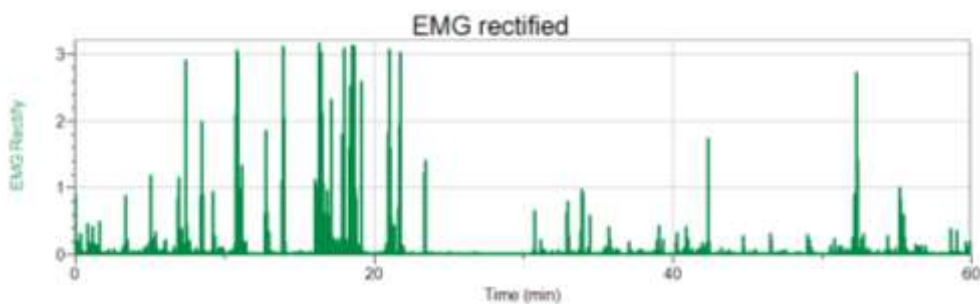
- b. On
- Raw Signal



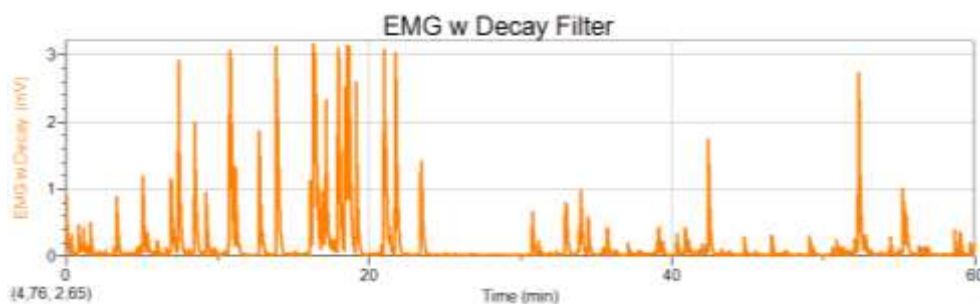
- EMG Filtered



- EMG Rectify



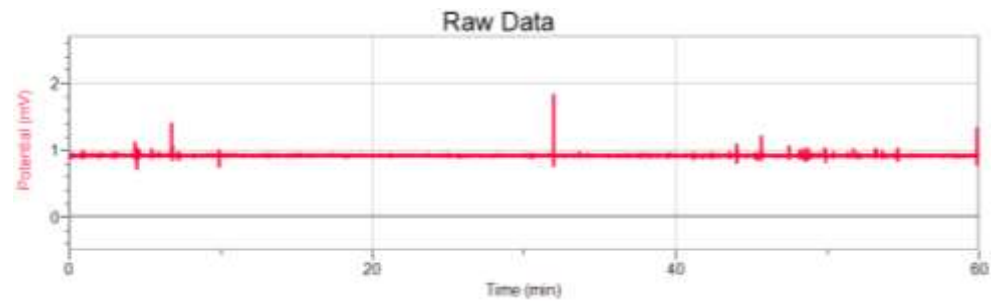
- EMG with Decay Filter



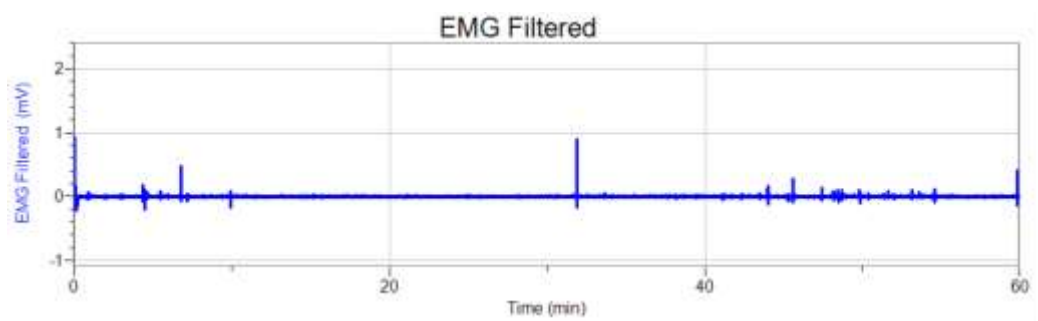
2. Respondent 2

a. Off

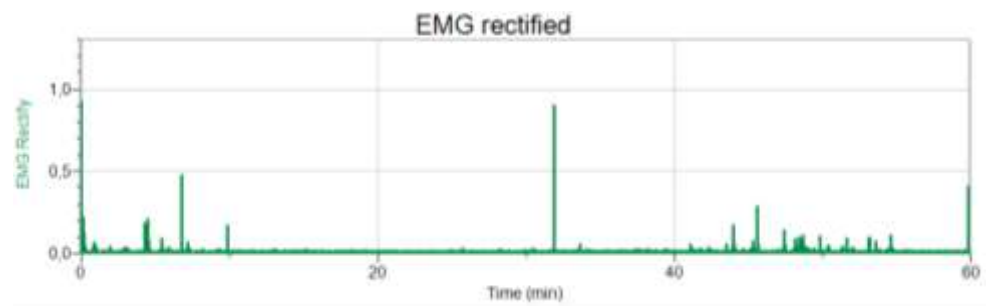
- Raw Signal



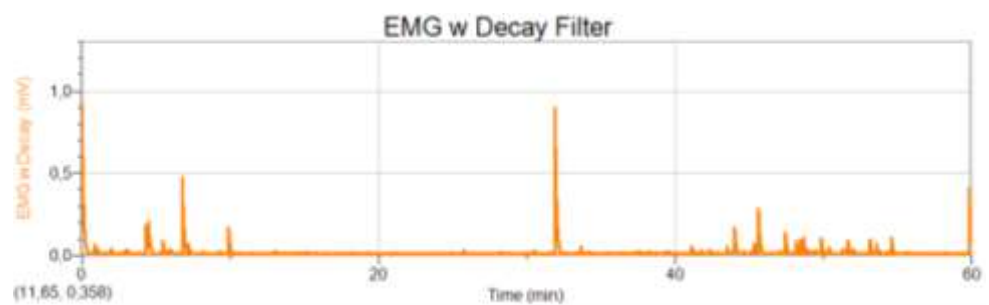
- EMG Filtered



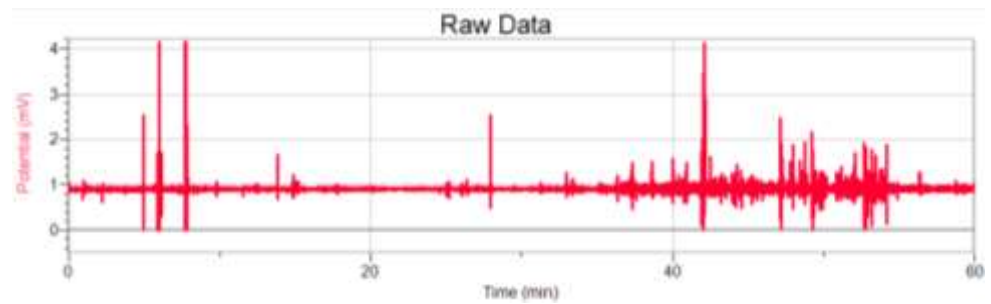
- EMG Rectify



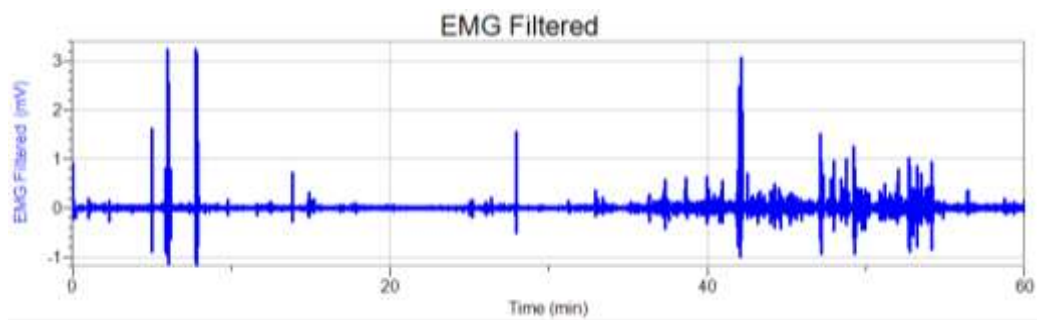
- EMG with Decay Filter



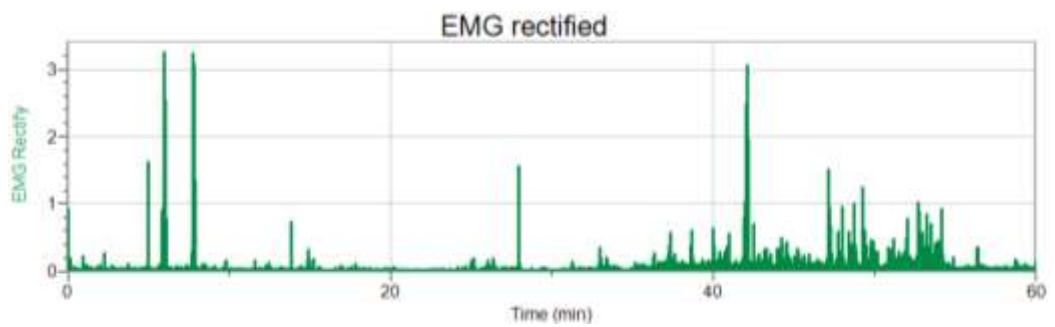
- b. On
- Raw Signal



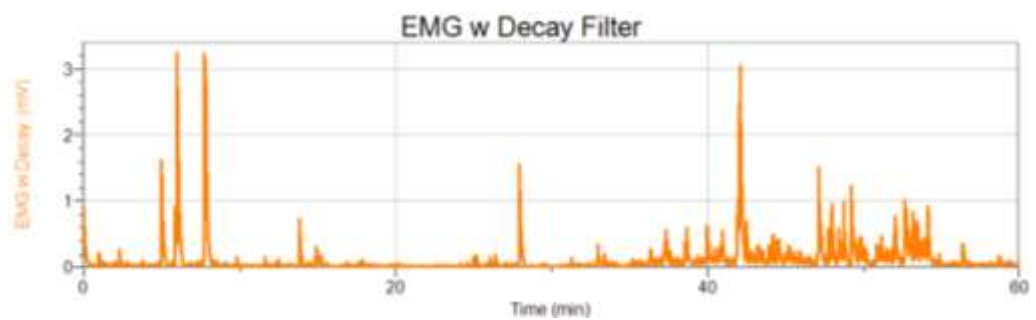
- EMG Filtered



- EMG Rectify



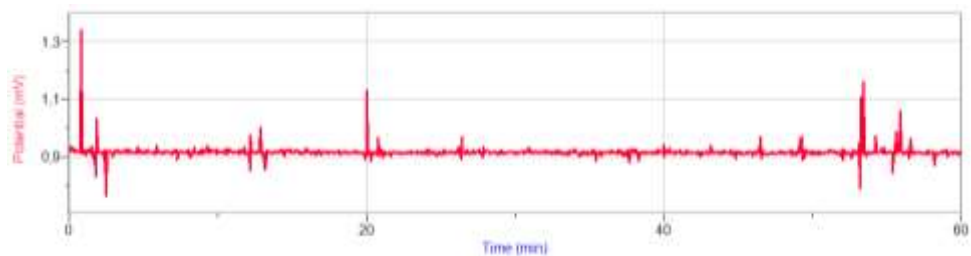
- EMG with Decay Filter



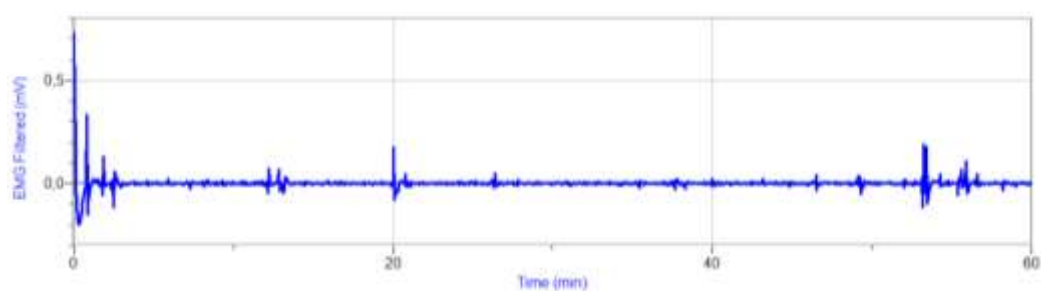
3. Respondent 3

a. Off

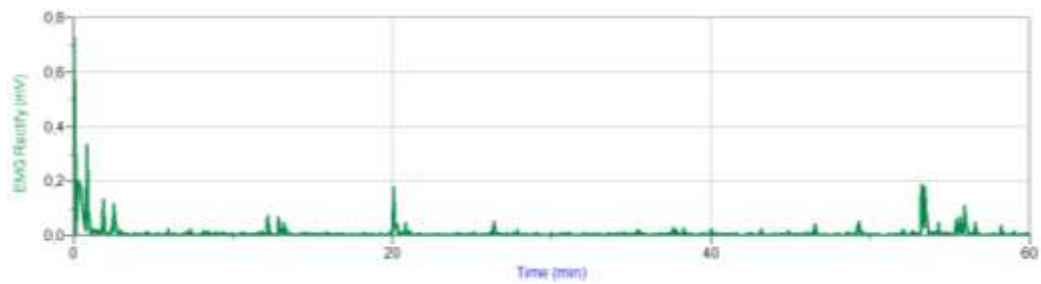
- Raw Signal



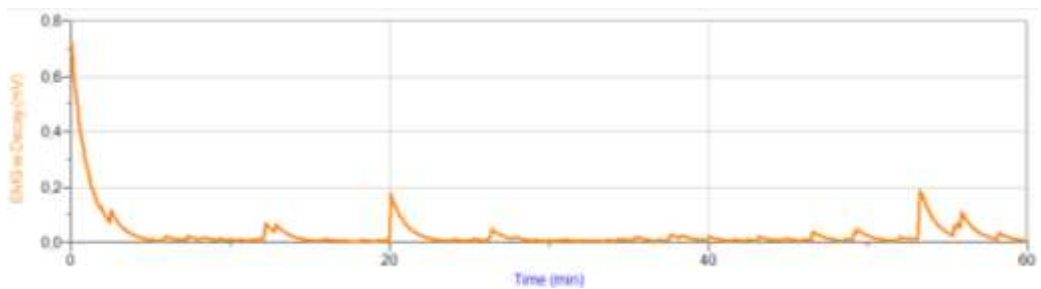
- EMG Filtered



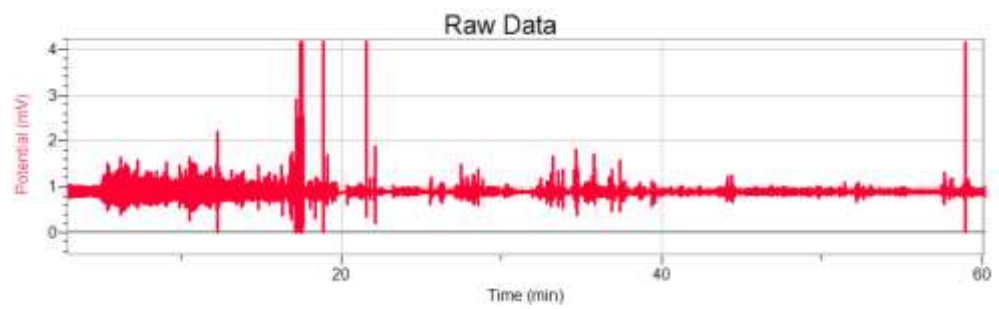
- EMG Rectify



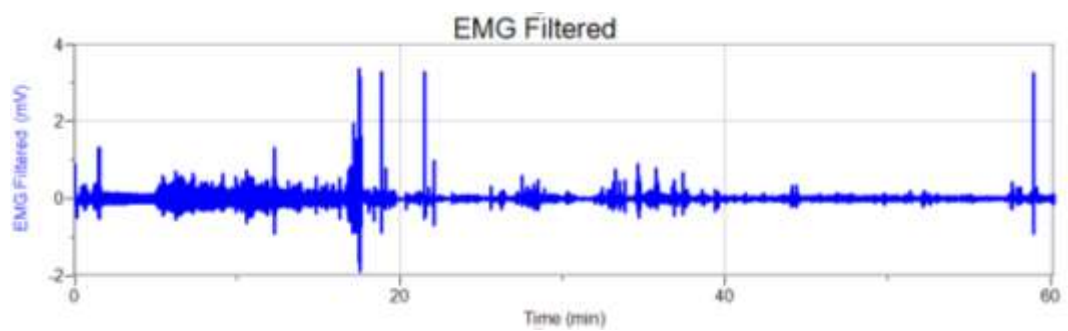
- EMG with Decay Filter



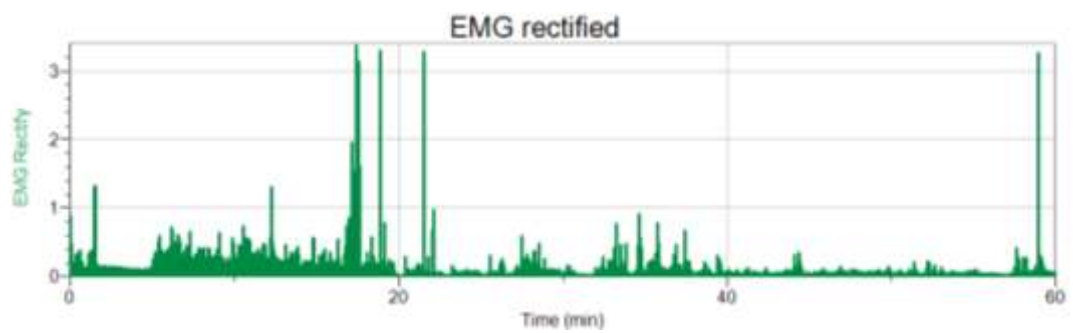
- b. On
- Raw Signal



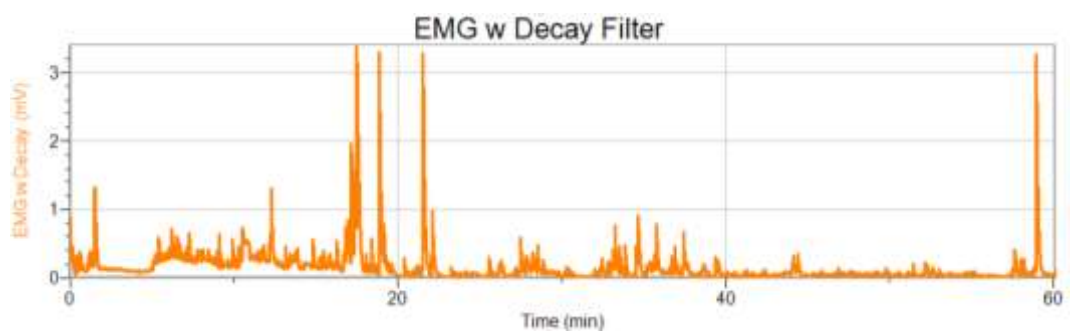
- EMG Filtered



- EMG Rectify



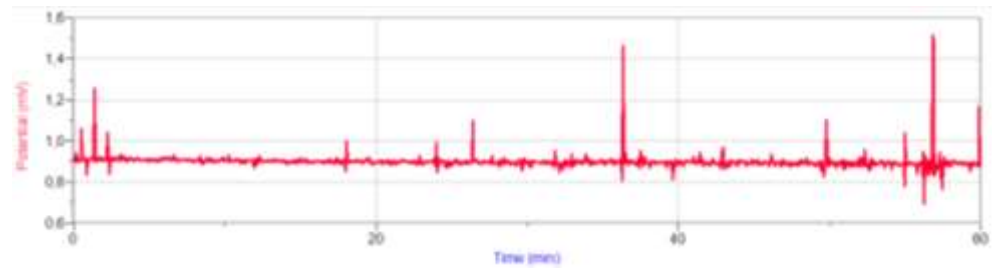
- EMG with Decay Filter



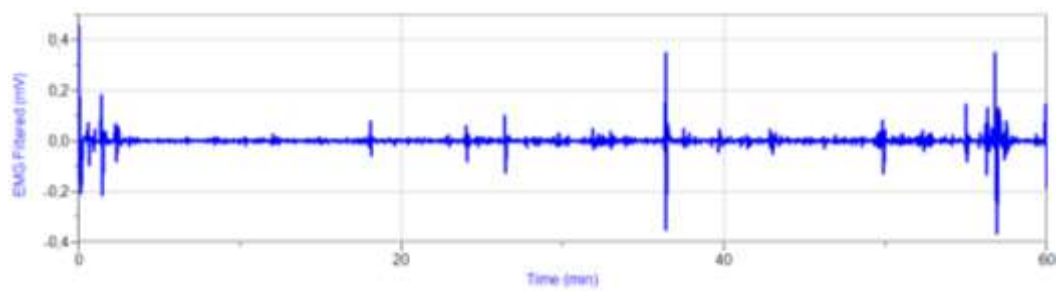
4. Respondent 4

a. Off

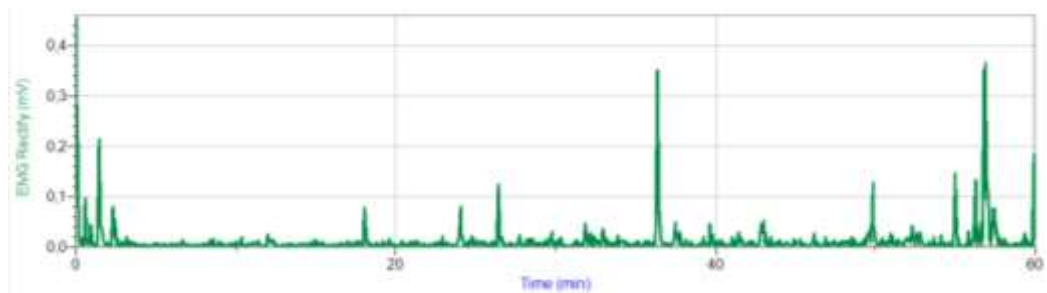
- Raw Signal



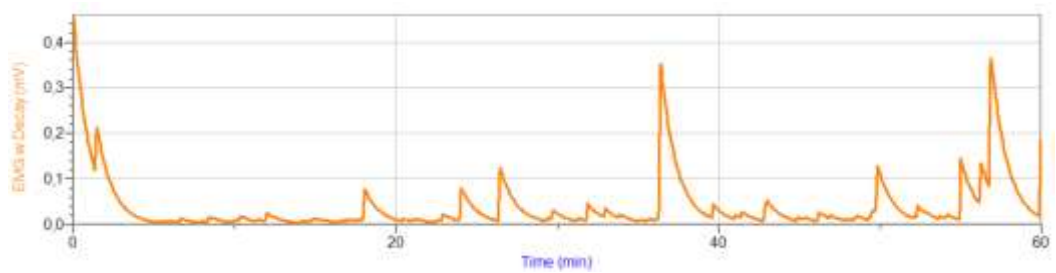
- EMG Filtered



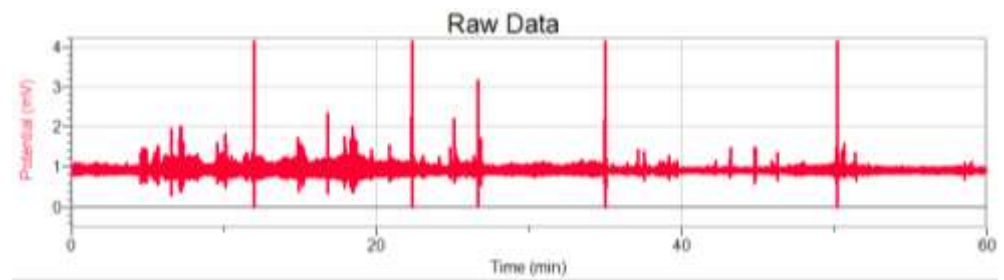
- EMG Rectify



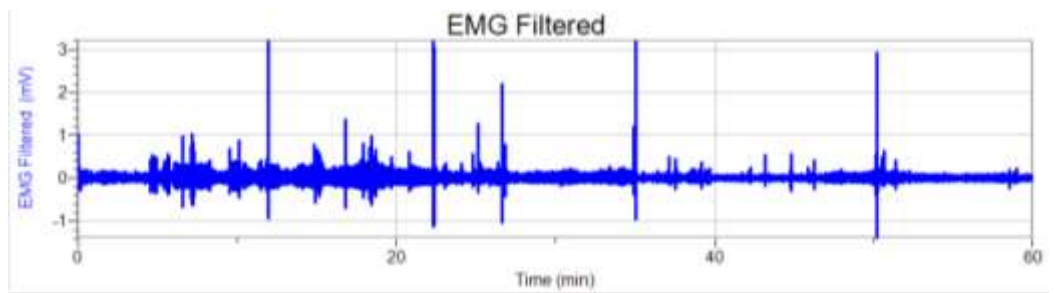
- EMG with Decay Filter



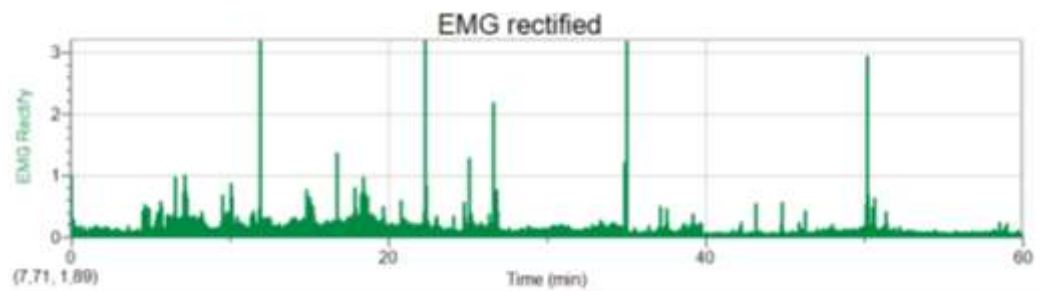
- b. On
- Raw Signal



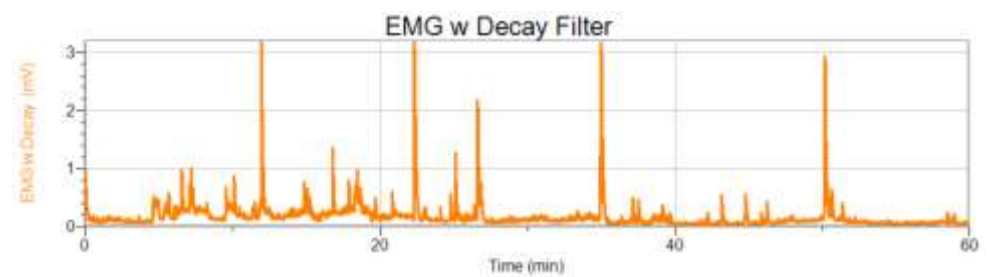
- EMG Filtered



- EMG Rectify



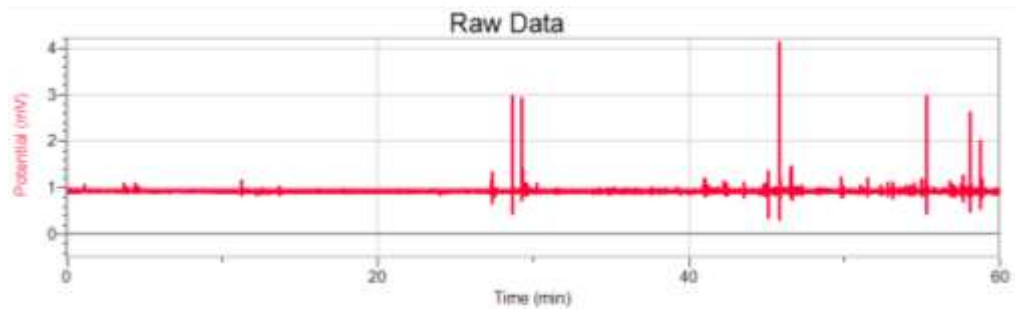
- EMG with Decay Filter



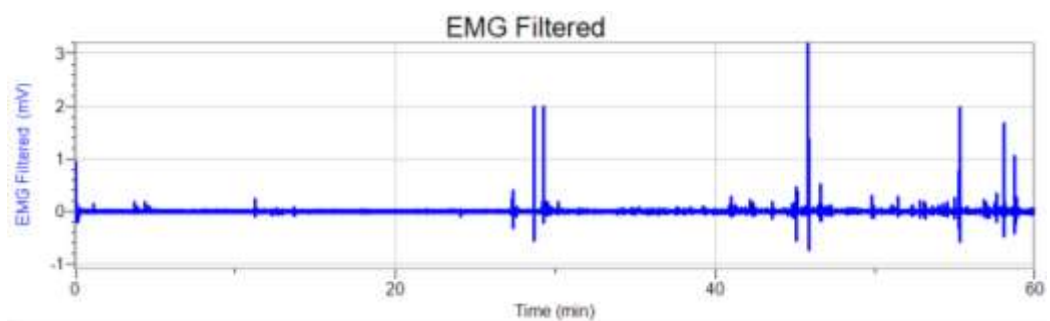
5. Respondent 5

a. Off

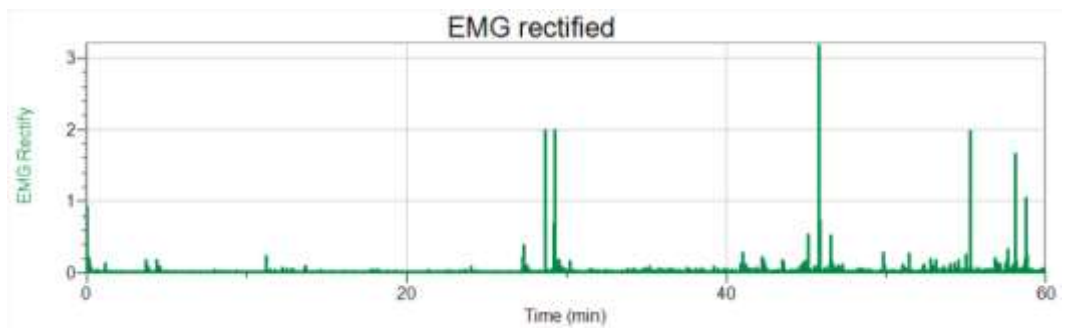
- Raw Signal



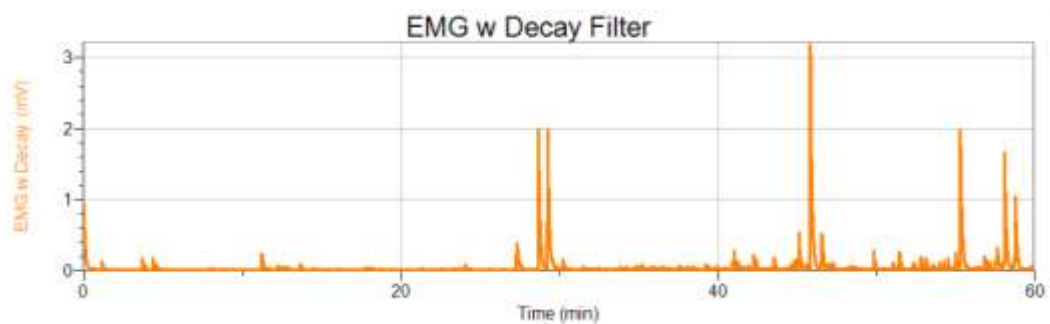
- EMG Filtered



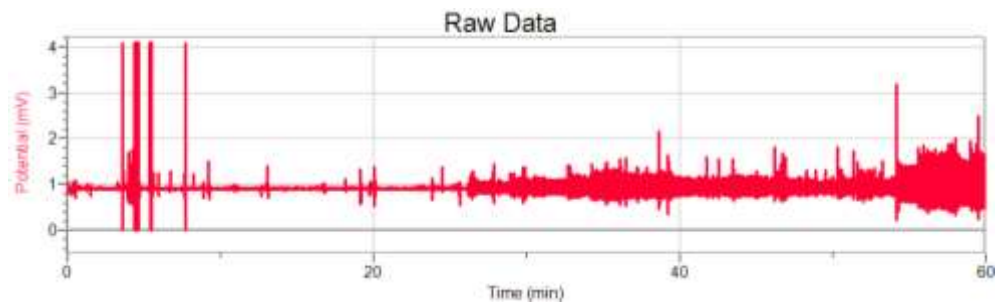
- EMG Rectify



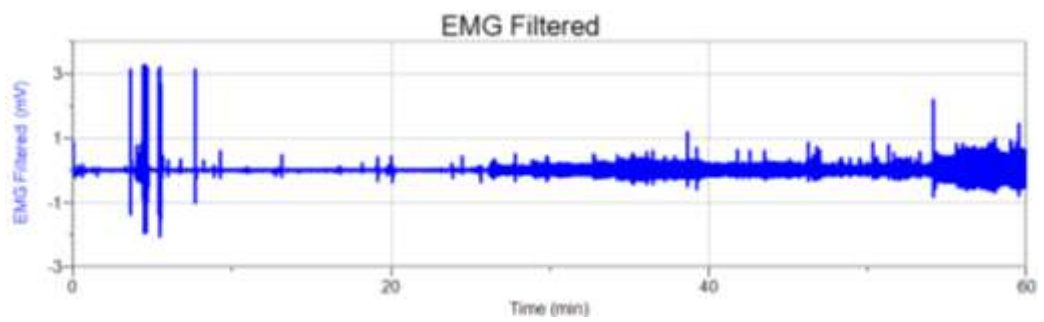
- EMG with Decay Filter



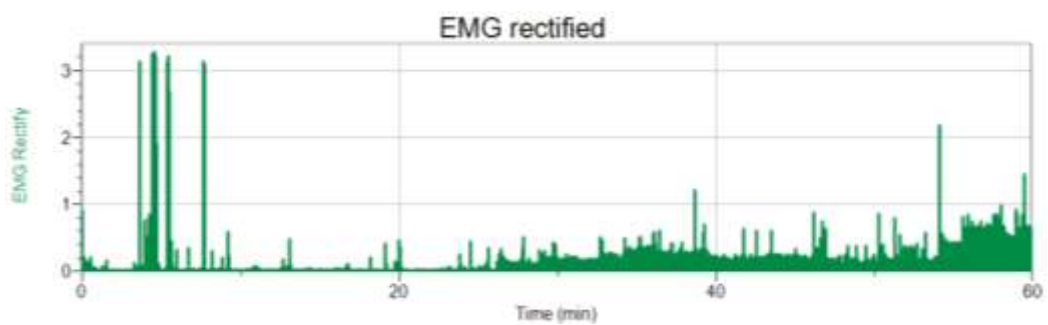
- b. On
- Raw Signal



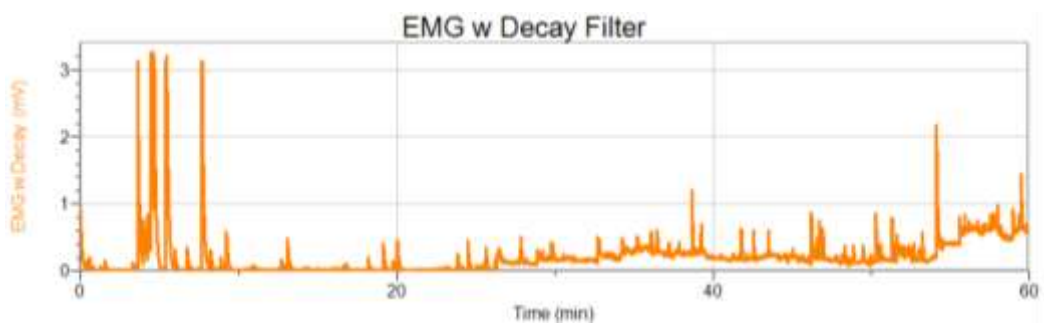
- EMG Filtered



- EMG Rectify



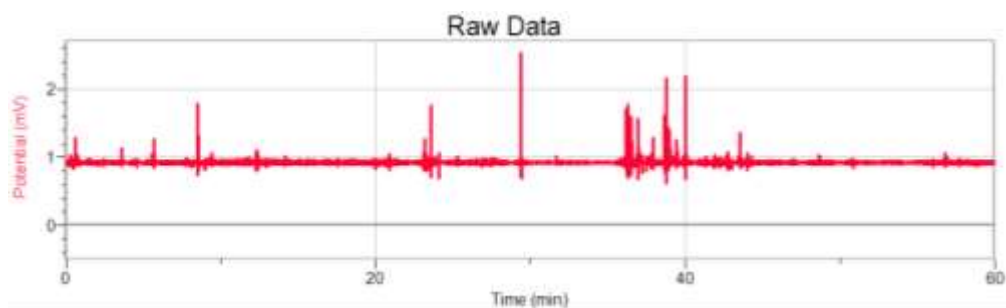
- EMG with Decay Filter



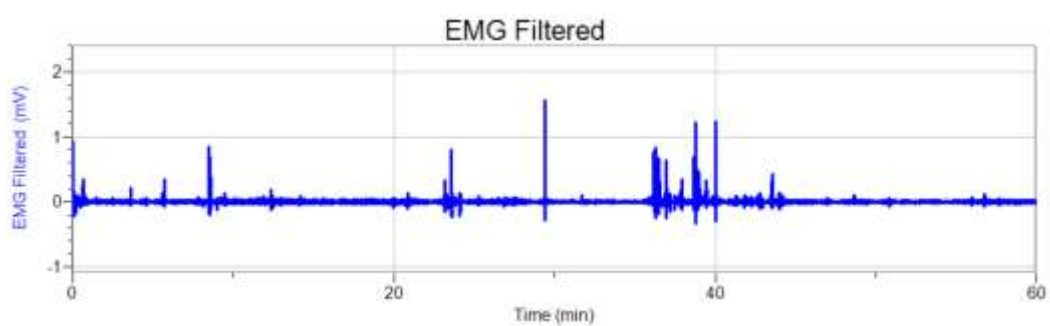
6. Respondent 6

a. Off

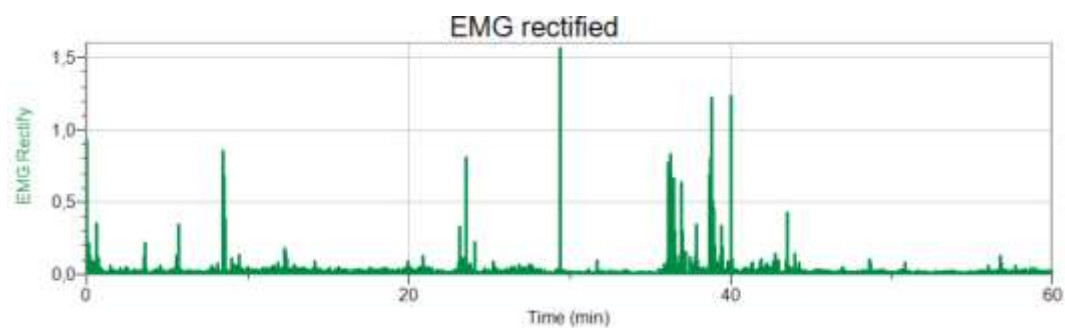
- Raw Signal



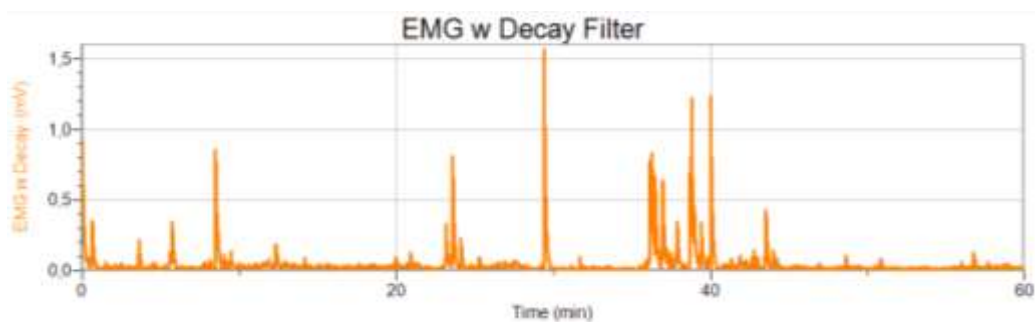
- EMG Filtered



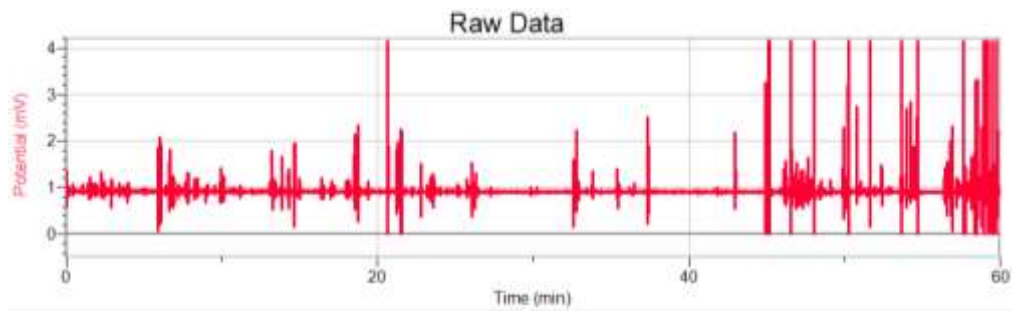
- EMG Rectify



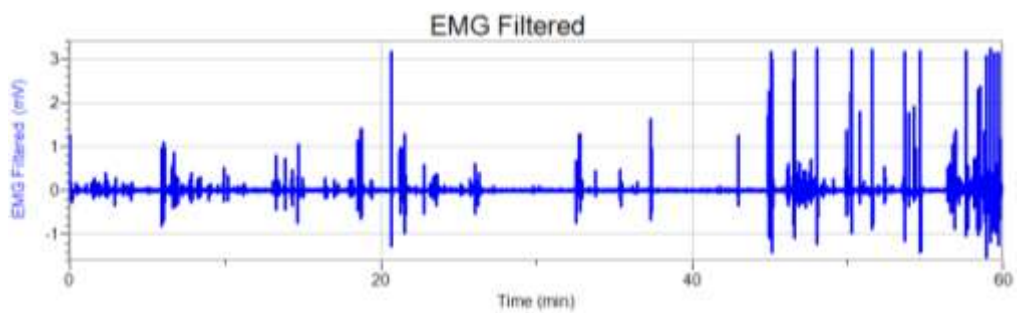
- EMG with Decay Filter



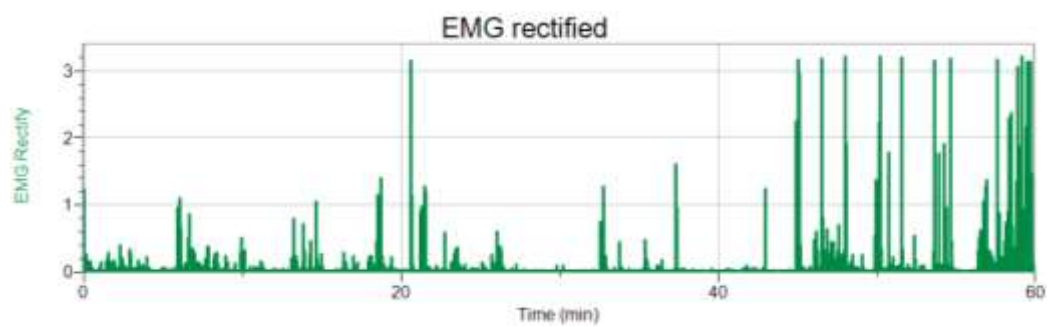
- b. On
- Raw Signal



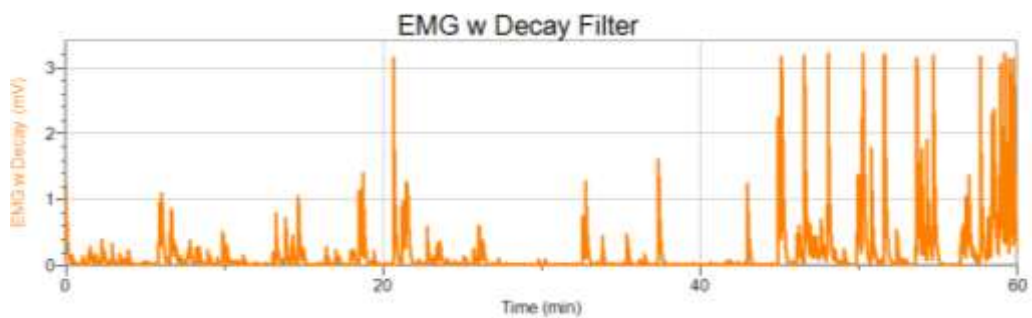
- EMG Filtered



- EMG Rectify



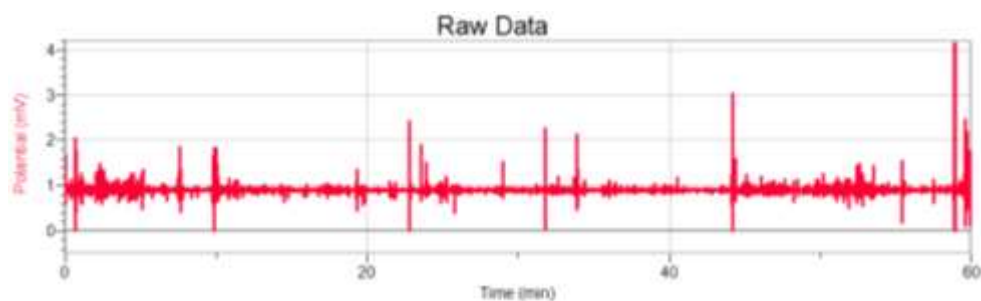
- EMG with Decay Filter



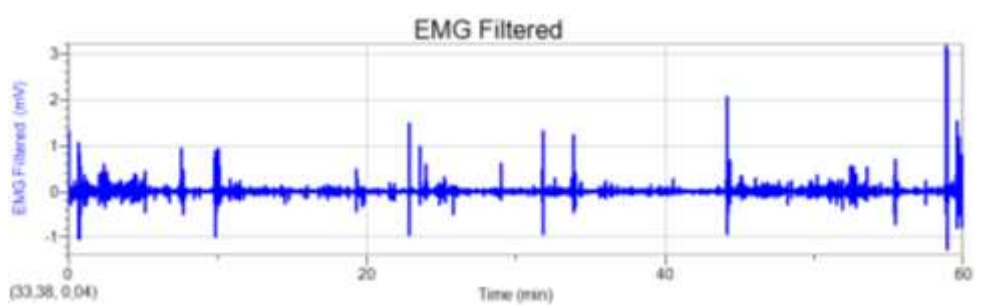
7. Respondent 7

a. Off

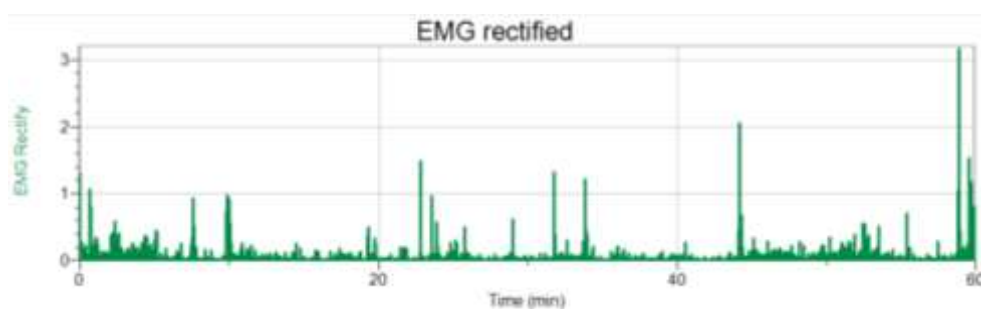
- Raw Signal



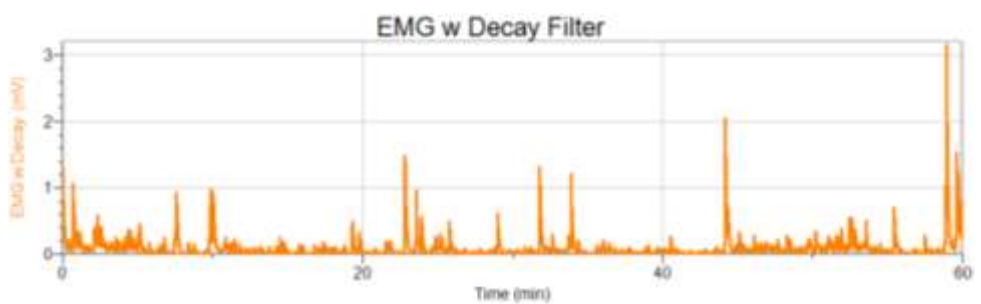
- EMG Filtered



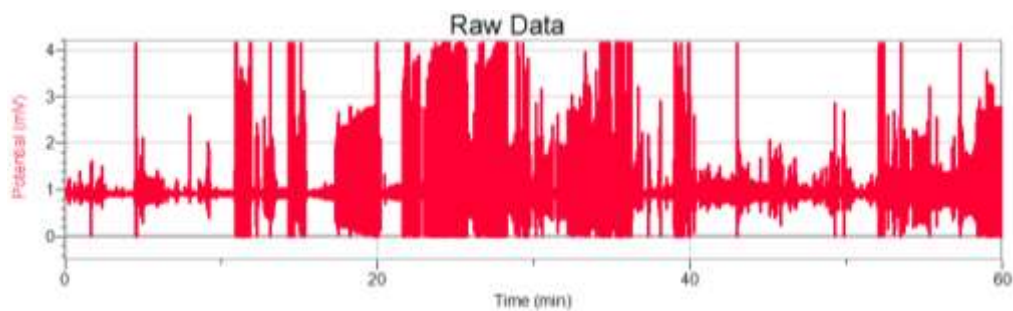
- EMG Rectify



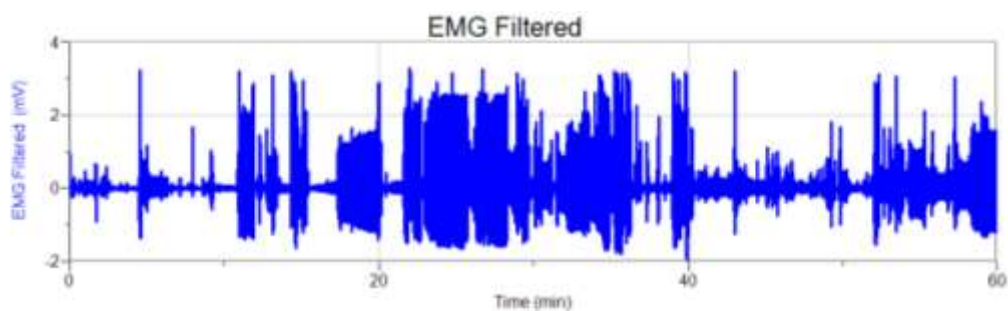
- EMG with Decay Filter



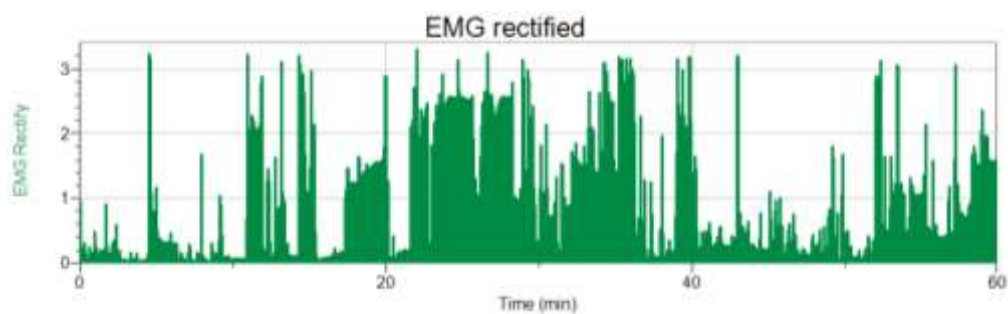
- b. On
- Raw Signal



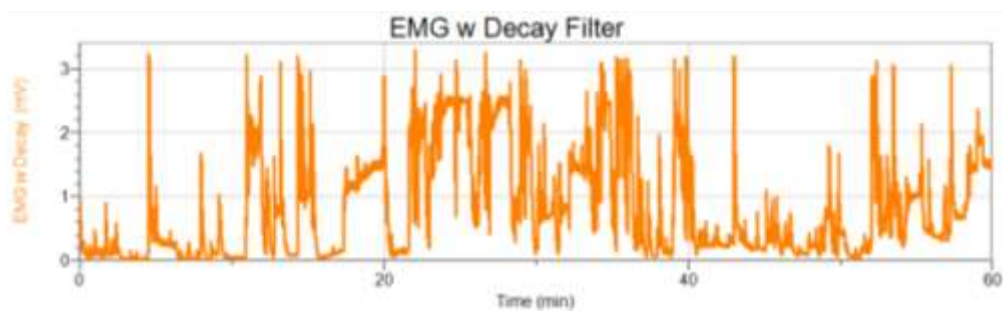
- EMG Filtered



- EMG Rectify



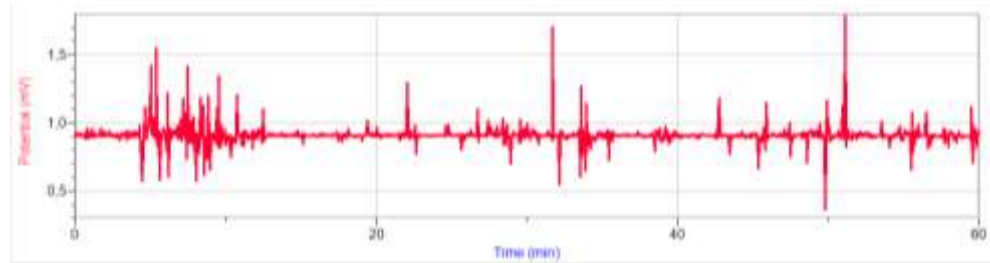
- EMG with Decay Filter



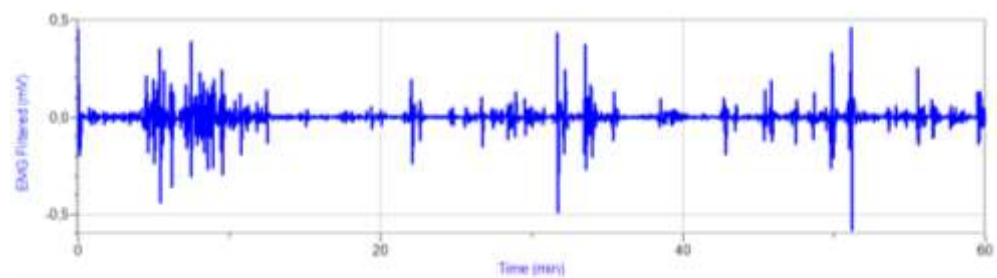
8. Respondent 8

a. Off

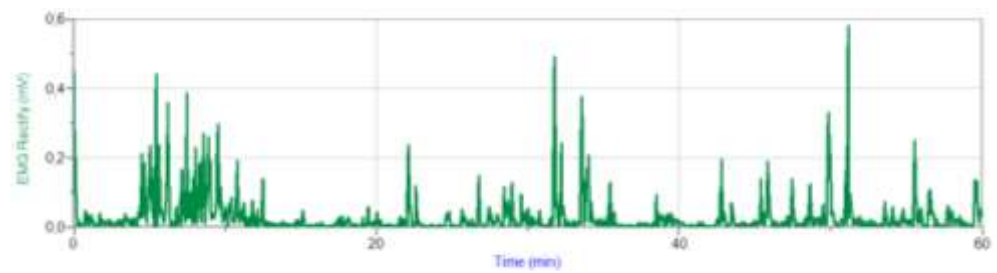
- Raw Signal



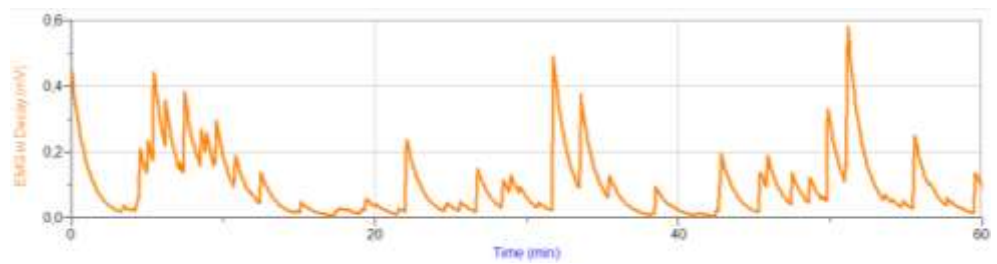
- EMG Filtered



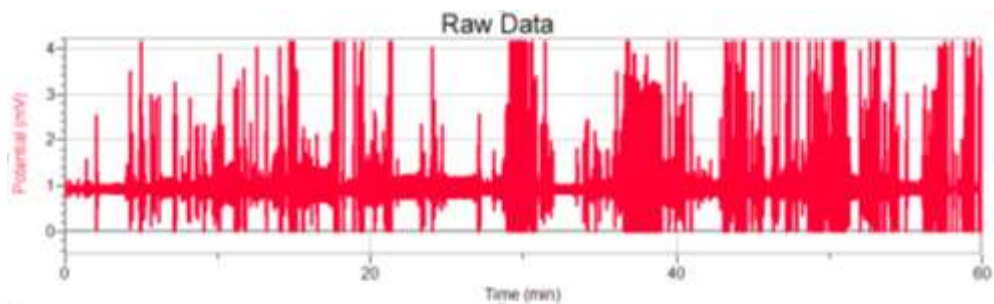
- EMG Rectify



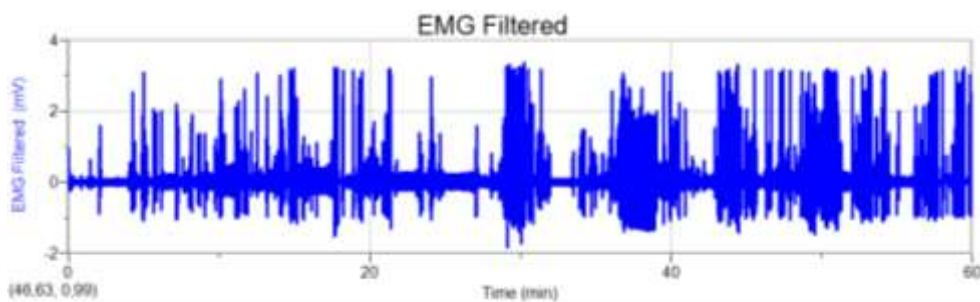
- EMG with Decay Filter



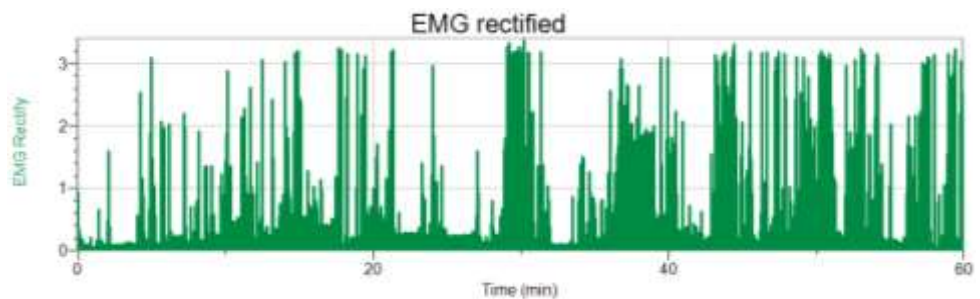
- c. On
- Raw Signal



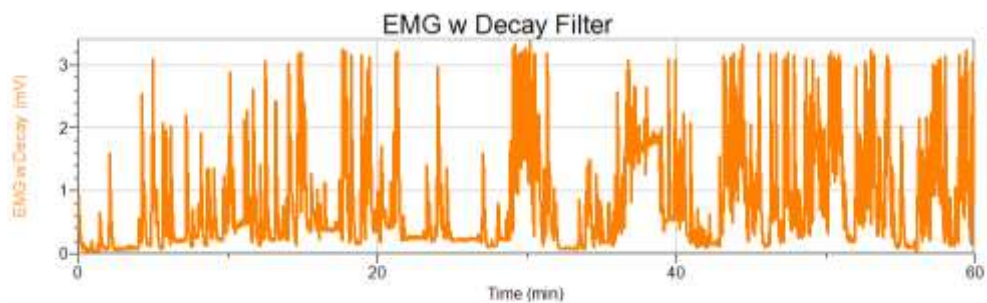
- EMG Filtered



- EMG Rectify



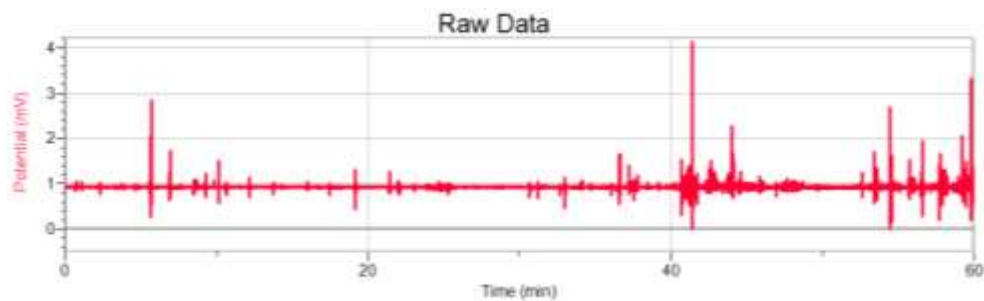
- EMG with Decay Filter



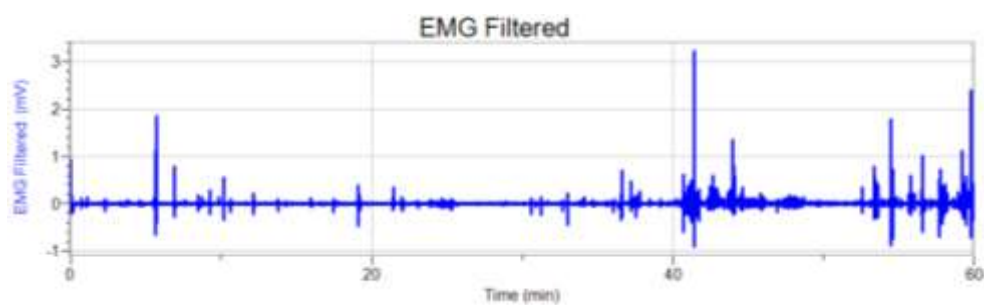
9. Respondent 9

a. Off

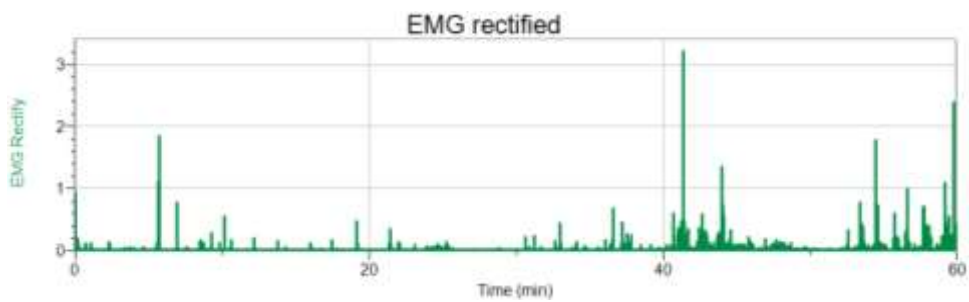
- Raw Signal



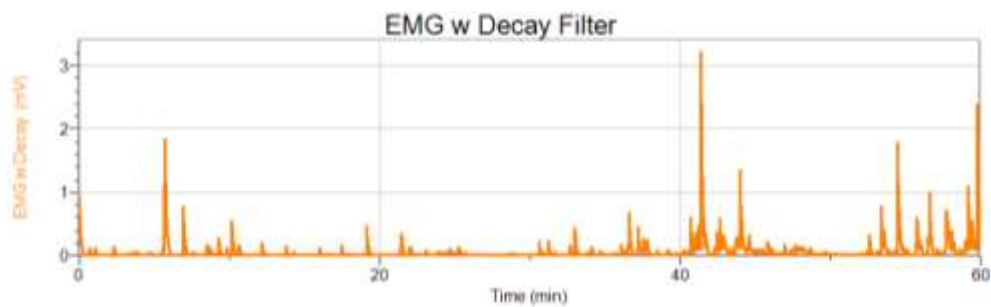
- EMG Filtered



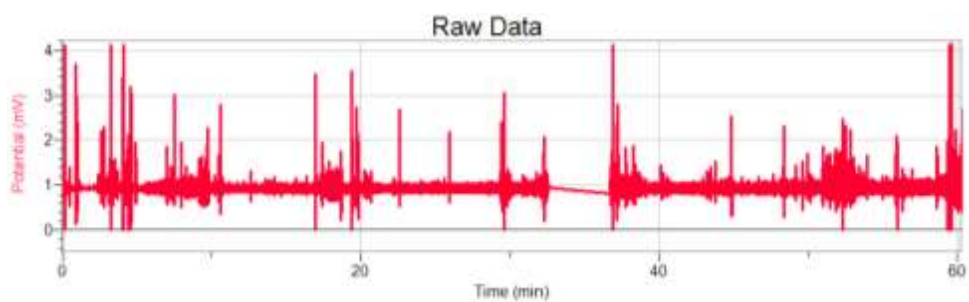
- EMG Rectify



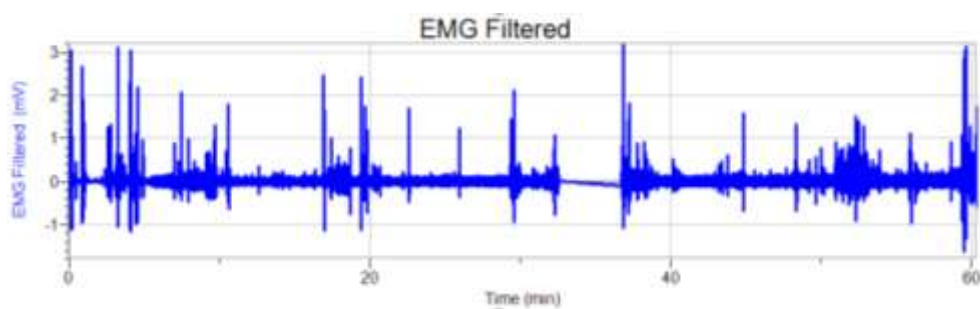
- EMG with Decay Filter



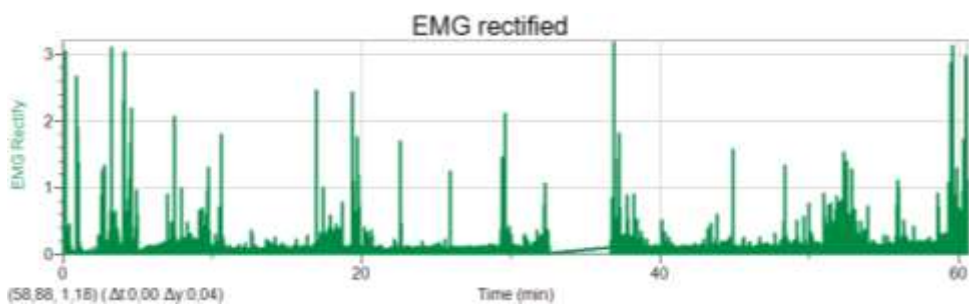
- d. On
- Raw Signal



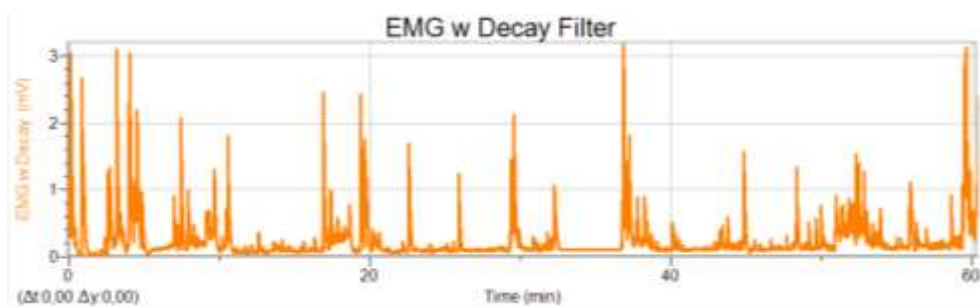
- EMG Filtered



- EMG Rectify



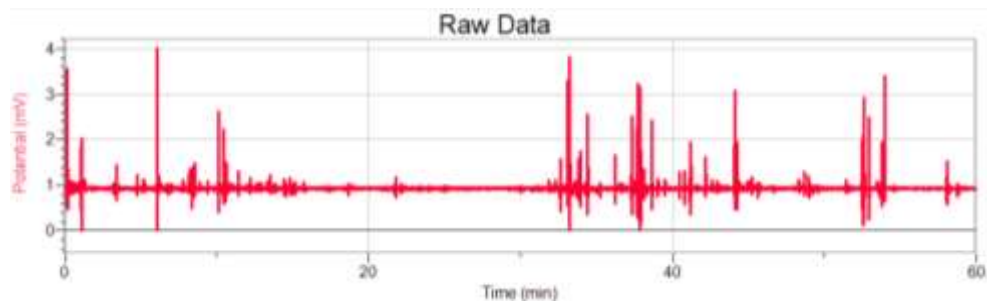
- EMG with Decay Filter



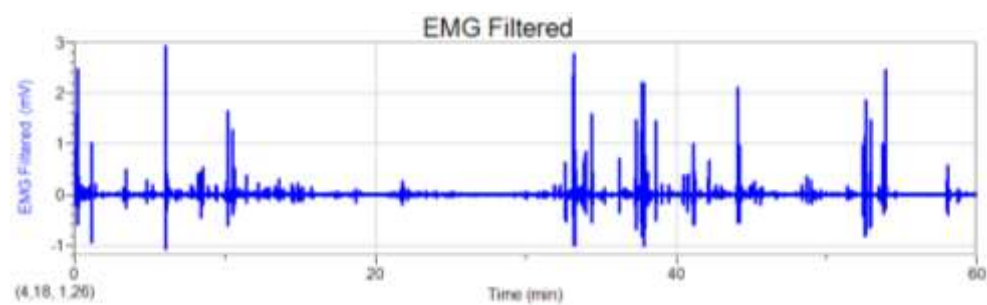
10. Respondent 10

a. Off

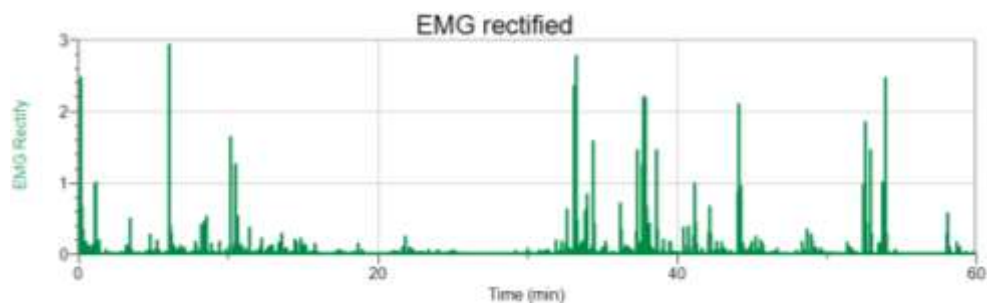
- Raw Signal



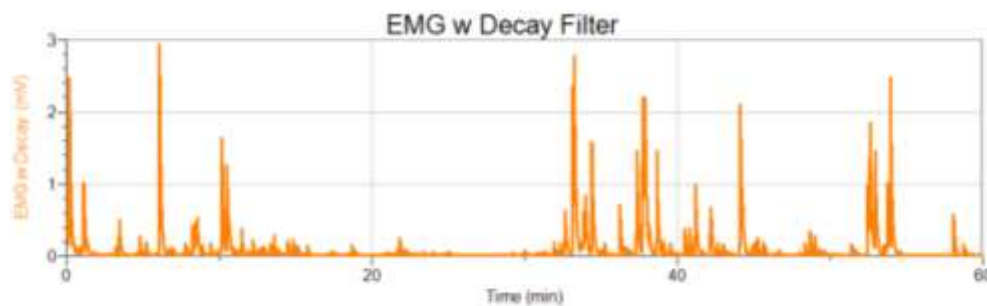
- EMG Filtered



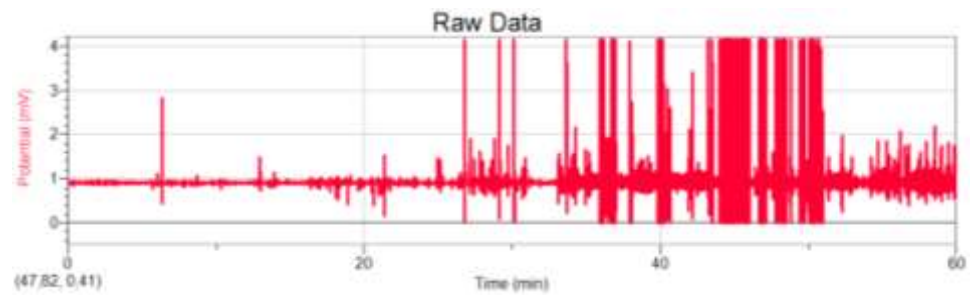
- EMG Rectify



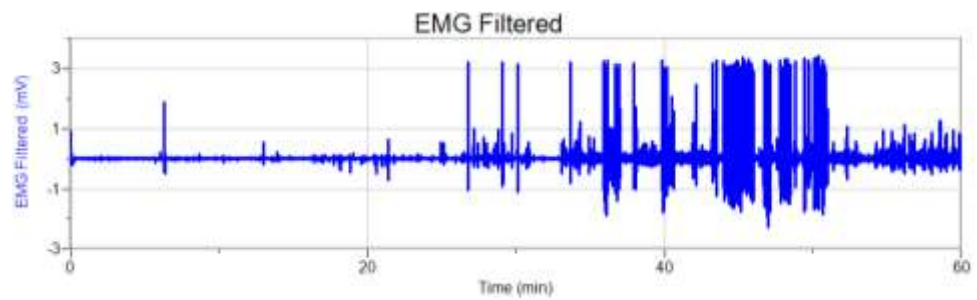
- EMG with Decay Filter



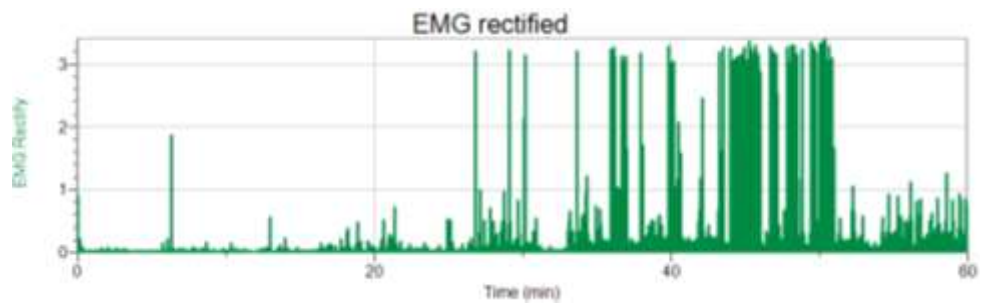
- e. On
- Raw Signal



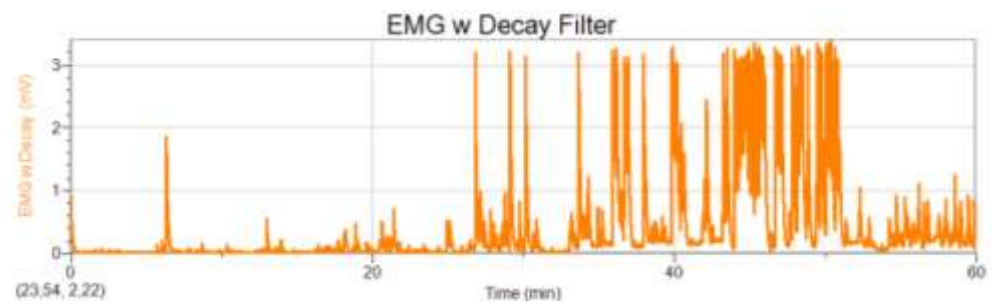
- EMG Filtered



- EMG Rectify



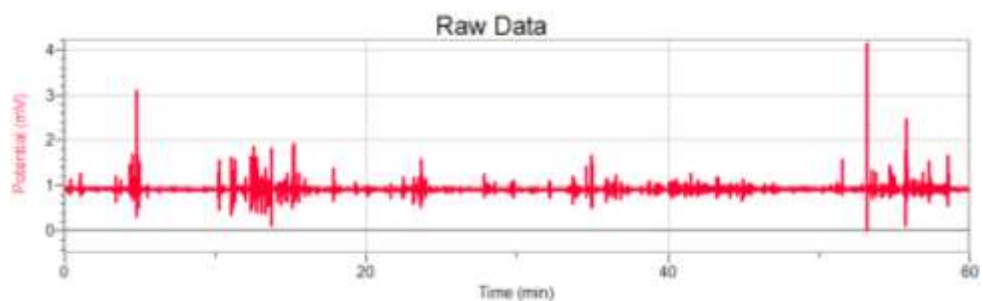
- EMG with Decay Filter



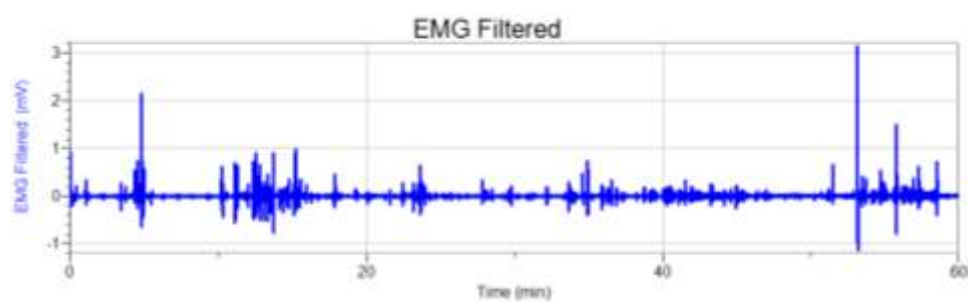
11. Respondent 11

a. Off

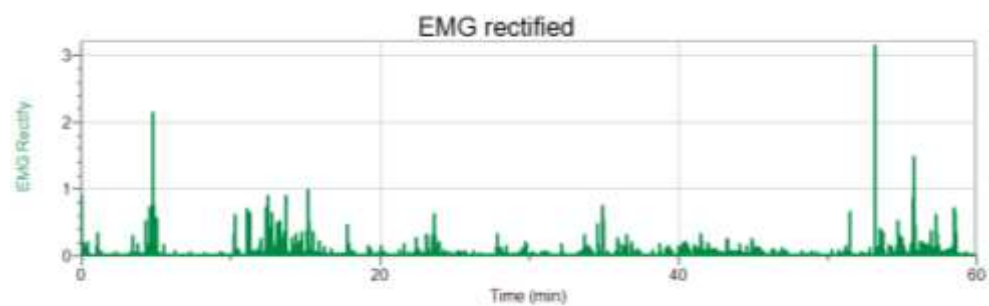
- Raw Signal



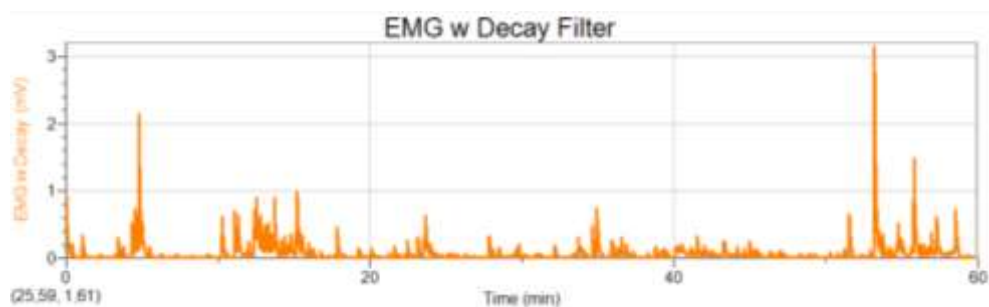
- EMG Filtered



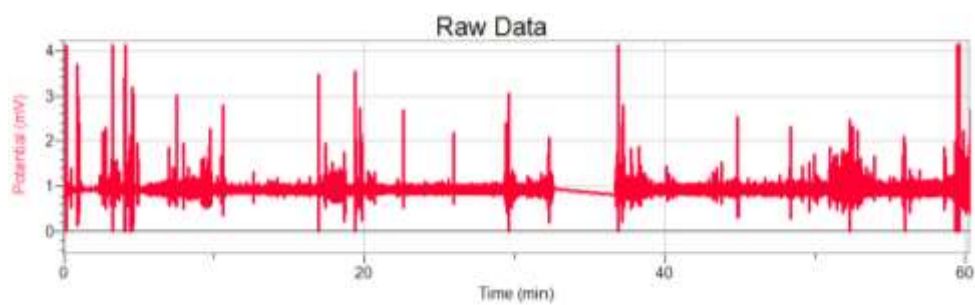
- EMG Rectify



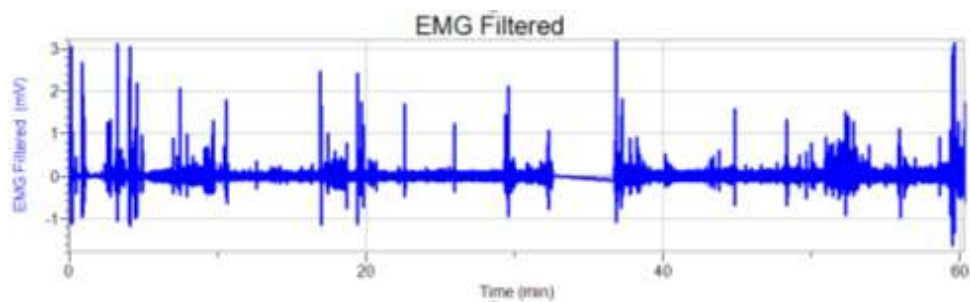
- EMG with Decay Filter



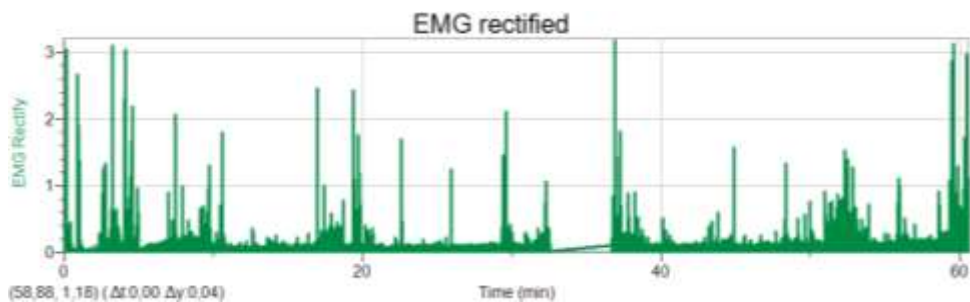
- f. On
- Raw Signal



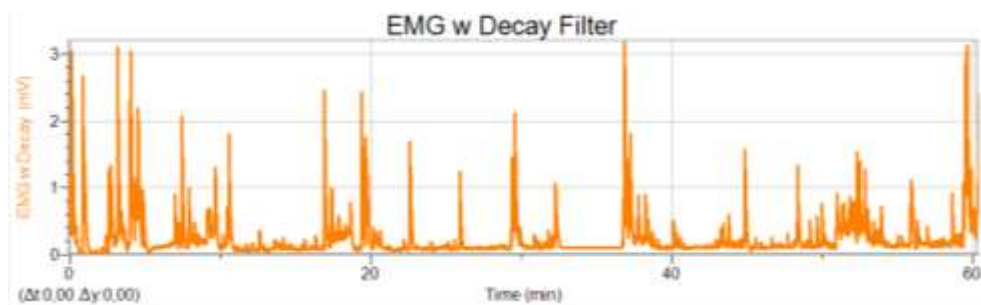
- EMG Filtered



- EMG Rectify



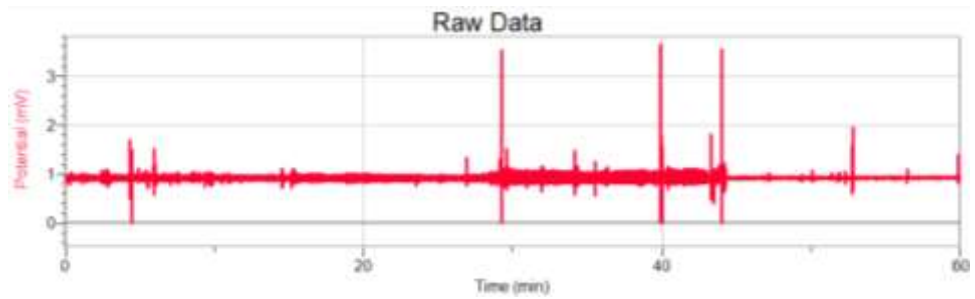
- EMG with Decay Filter



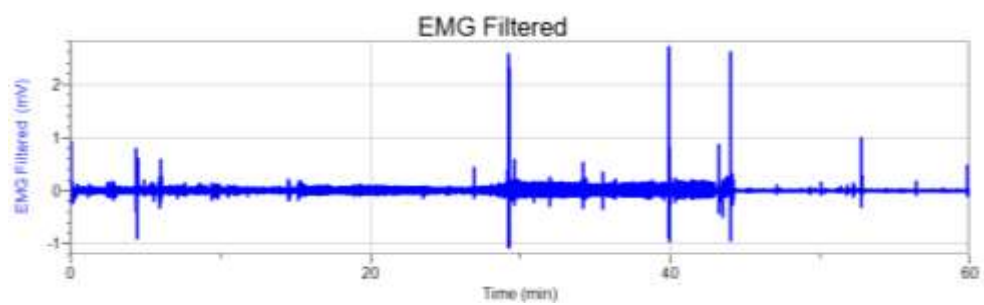
12. Respondent 12

a. Off

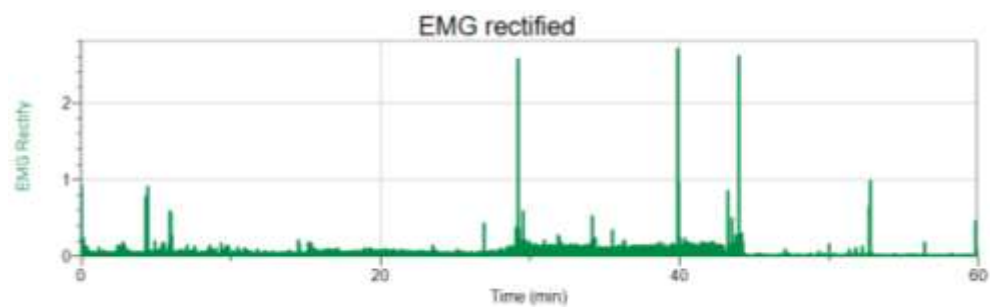
- Raw Signal



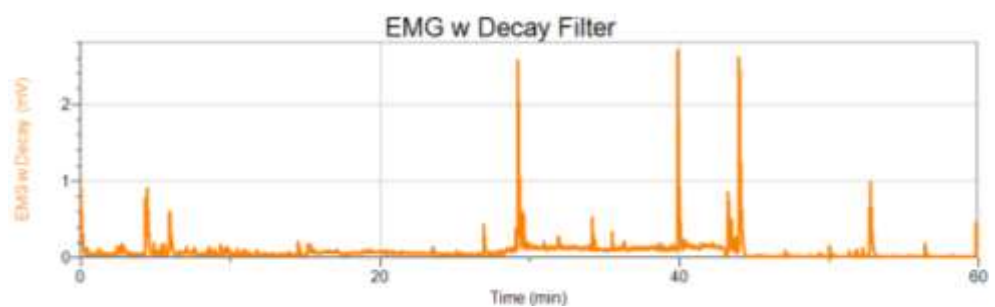
- EMG Filtered



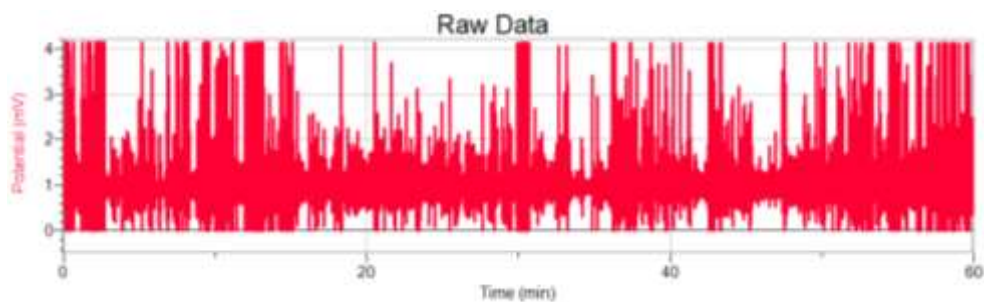
- EMG Rectify



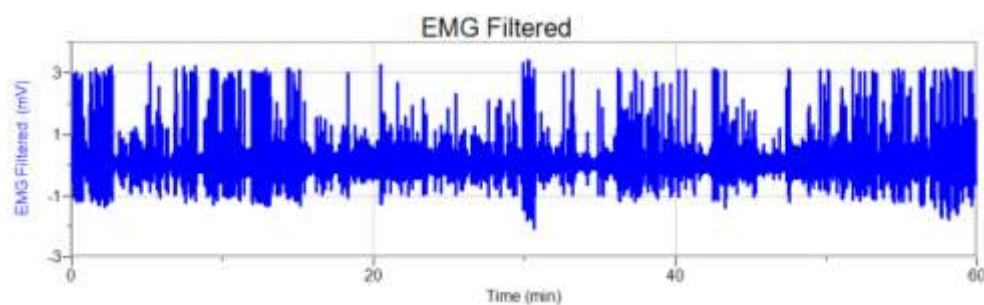
- EMG with Decay Filter



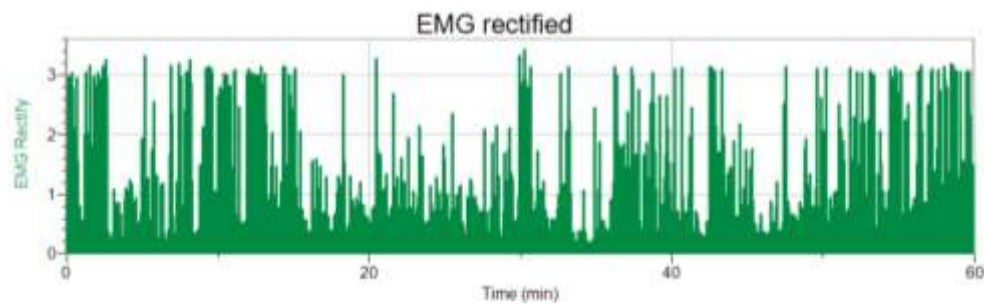
- g. On
- Raw Signal



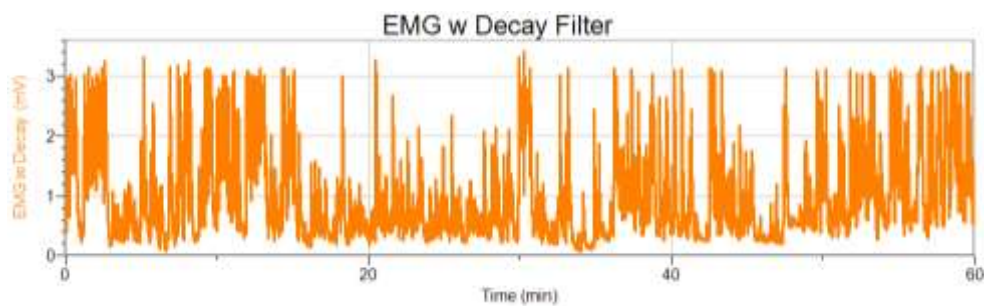
- EMG Filtered



- EMG Rectify



- EMG with Decay Filter



B. Average Blood Pressure of Participants

Respondent	Gender	Motor condition	Blood Pressure			
			Before		After	
			Systolic	Diastolic	Systolic	Diastolic
1	F	On	80	60	70	60
		Off	90	70	90	60
2	F	On	90	80	80	70
		Off	80	70	70	60
3	F	On	90	60	80	60
		Off	90	70	80	60
4	F	On	90	60	80	70
		Off	80	70	80	60
5	F	On	80	70	70	60
		Off	90	60	80	50
6	F	On	90	70	70	60
		Off	80	60	80	70
7	M	On	100	80	80	70
		Off	90	60	80	60
8	M	On	80	50	70	60
		Off	80	70	80	60
9	M	On	90	70	80	70
		Off	90	70	80	70
10	M	On	120	80	90	70
		Off	100	80	90	60
11	M	On	100	60	70	60
		Off	90	60	70	60
12	M	On	90	70	80	70
		Off	90	70	80	60