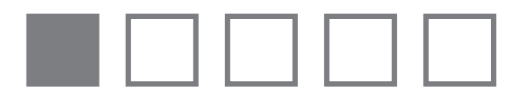


reimagining code's urban kampong

project : jogoyudan.11



proposed by
satria agung permana

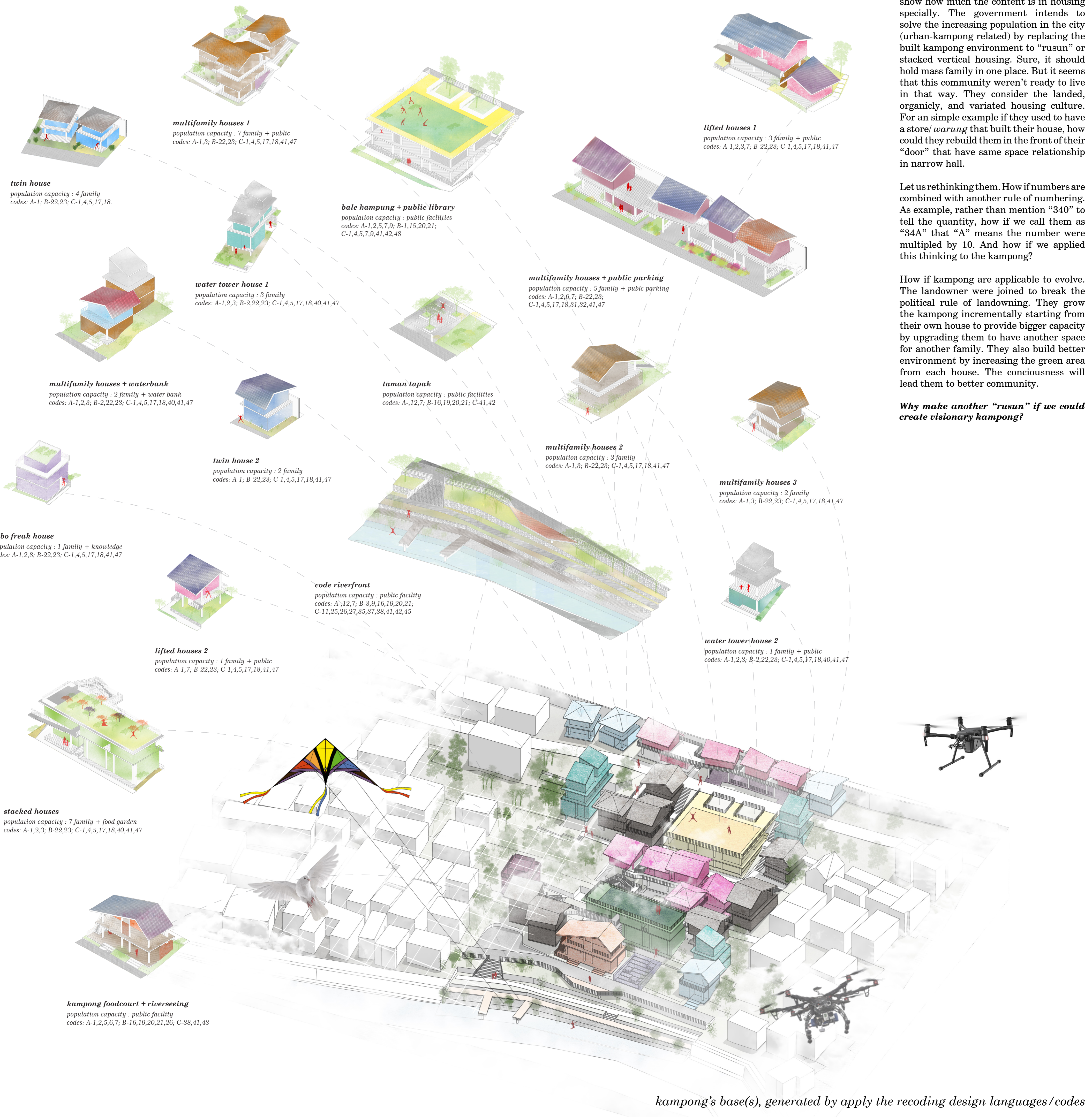
supervised by
ilya f. maharika & syarifah ismailiyah alathas

In our common thinking way of numbers (quantity), we know that numbers will show how much the content is in housing specially. The government intends to solve the increasing population in the city (urban-kampong related) by replacing the built kampong environment to "rusun" or stacked vertical housing. Sure, it should hold mass family in one place. But it seems that this community weren't ready to live in that way. They consider the landed, organically, and varied housing culture. For an simple example if they used to have a store/*warung* that built their house, how could they rebuild them in the front of their "door" that have same space relationship in narrow hall.

Let us rethinking them. How if numbers are combined with another rule of numbering. As example, rather than mention "340" to tell the quantity, how if we call them as "34A" that "A" means the number were multiplied by 10. And how if we applied this thinking to the kampong?

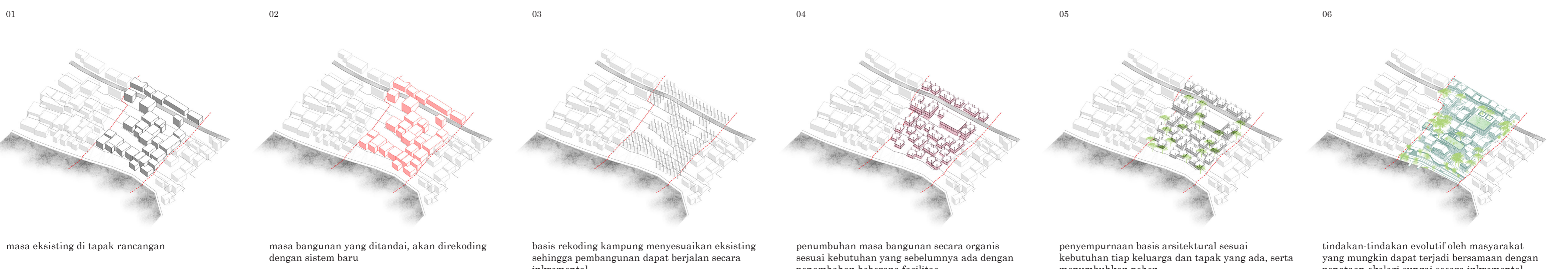
How if kampong are applicable to evolve. The landowner were joined to break the political rule of landowning. They grow the kampong incrementally starting from their own house to provide bigger capacity by upgrading them to have another space for another family. They also build better environment by increasing the green area from each house. The consciousness will lead them to better community.

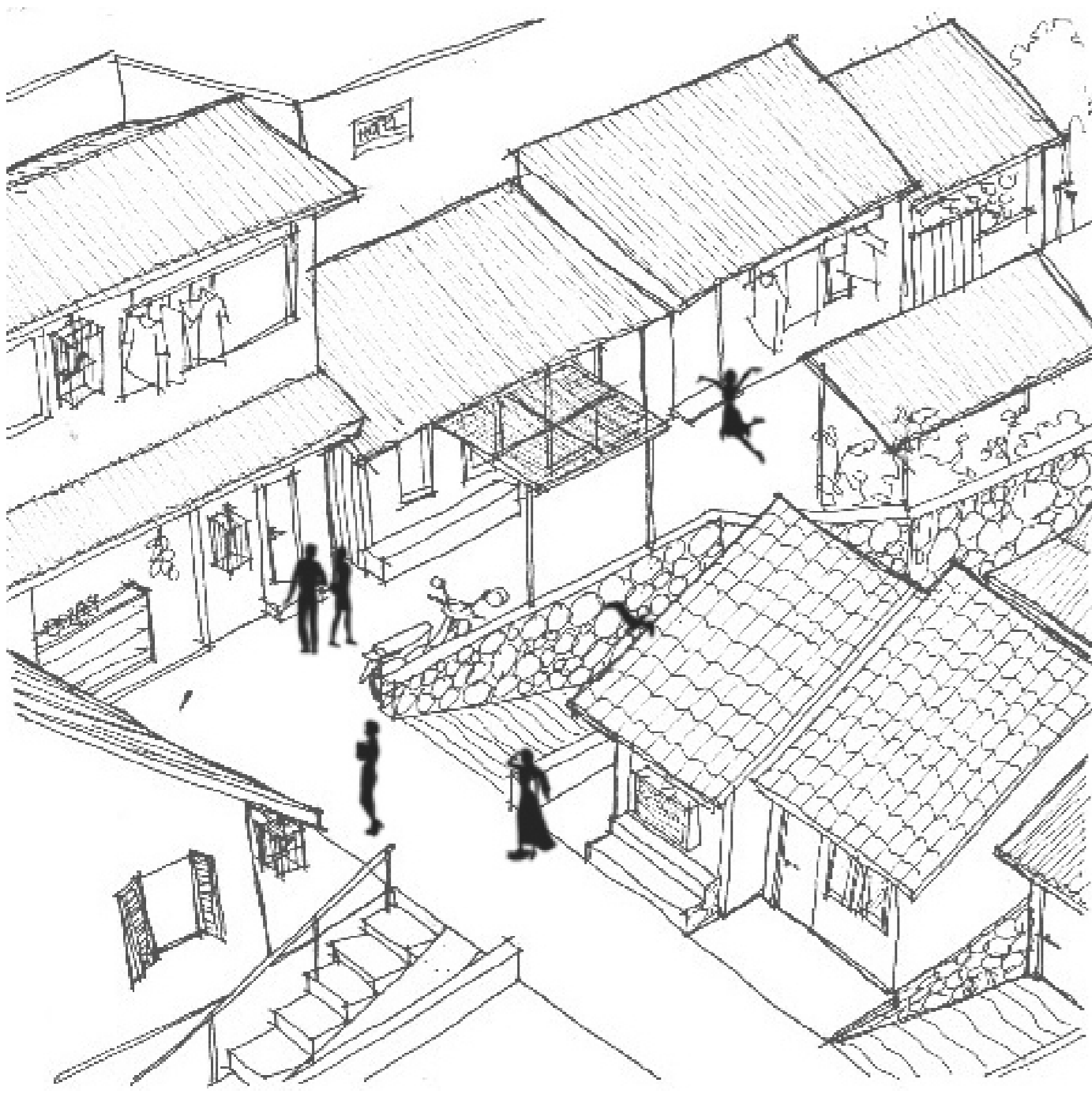
Why make another "rusun" if we could create visionary kampong?



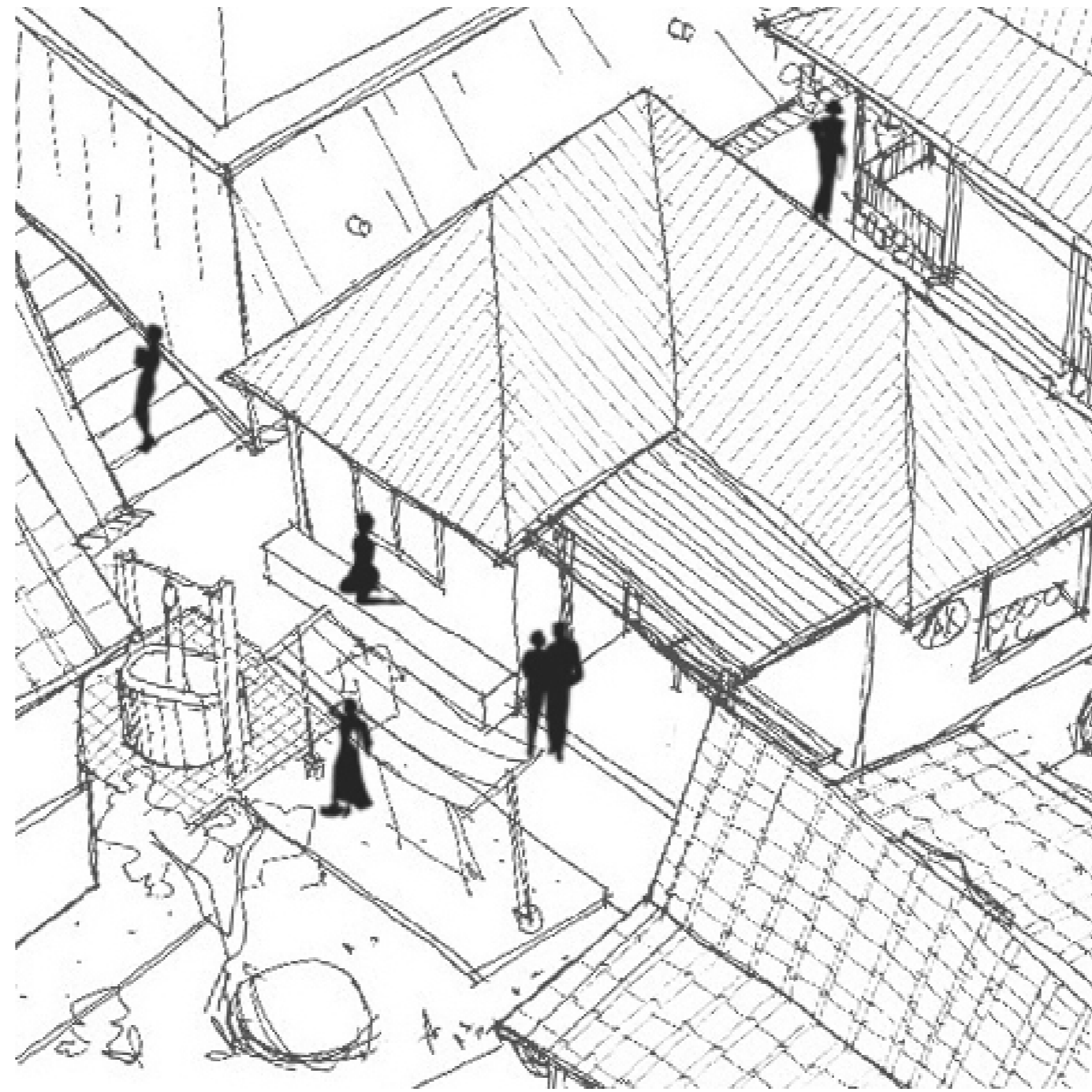
kampong's base(s), generated by apply the recoding design languages/codes

incremental development phase

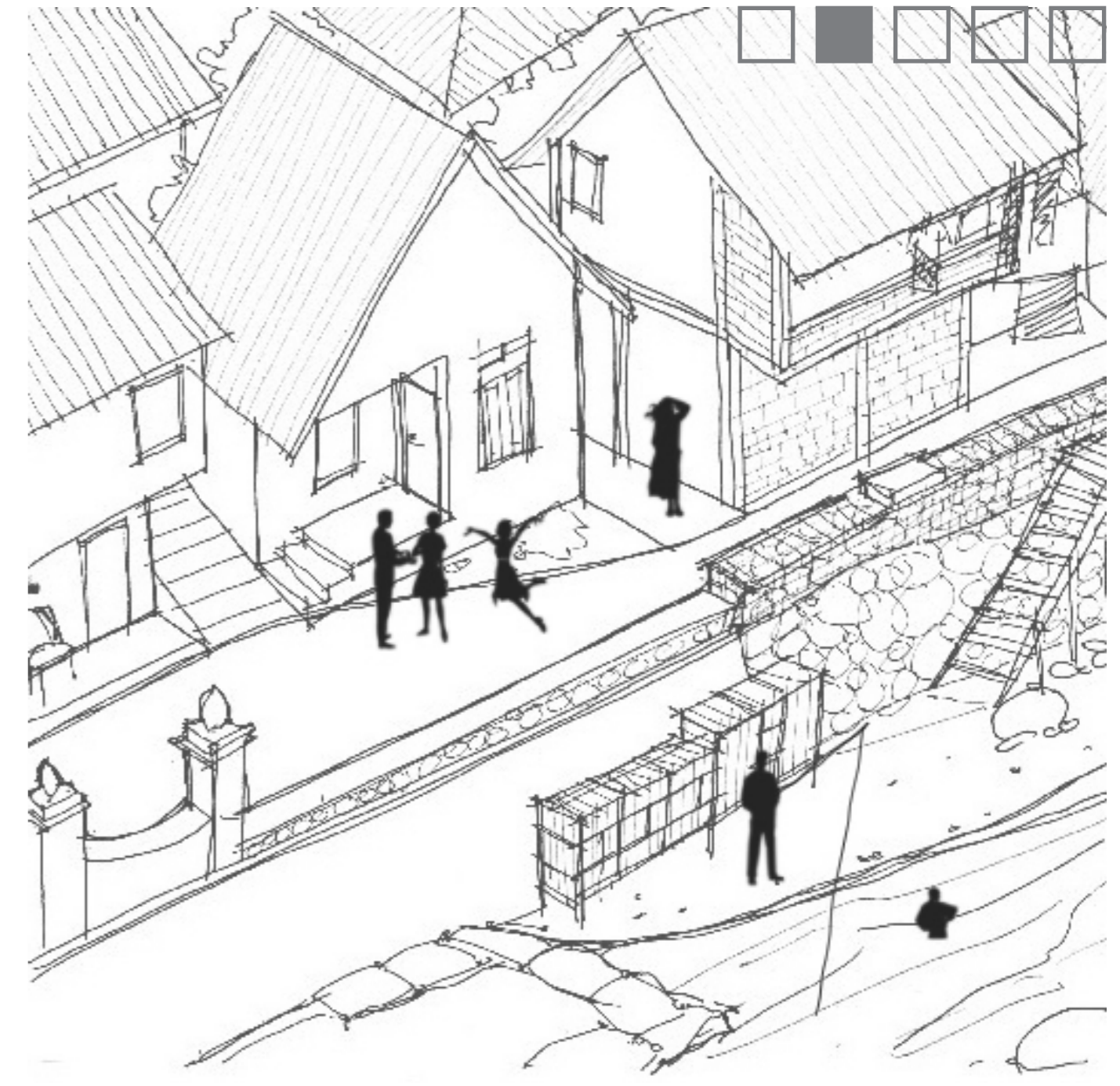




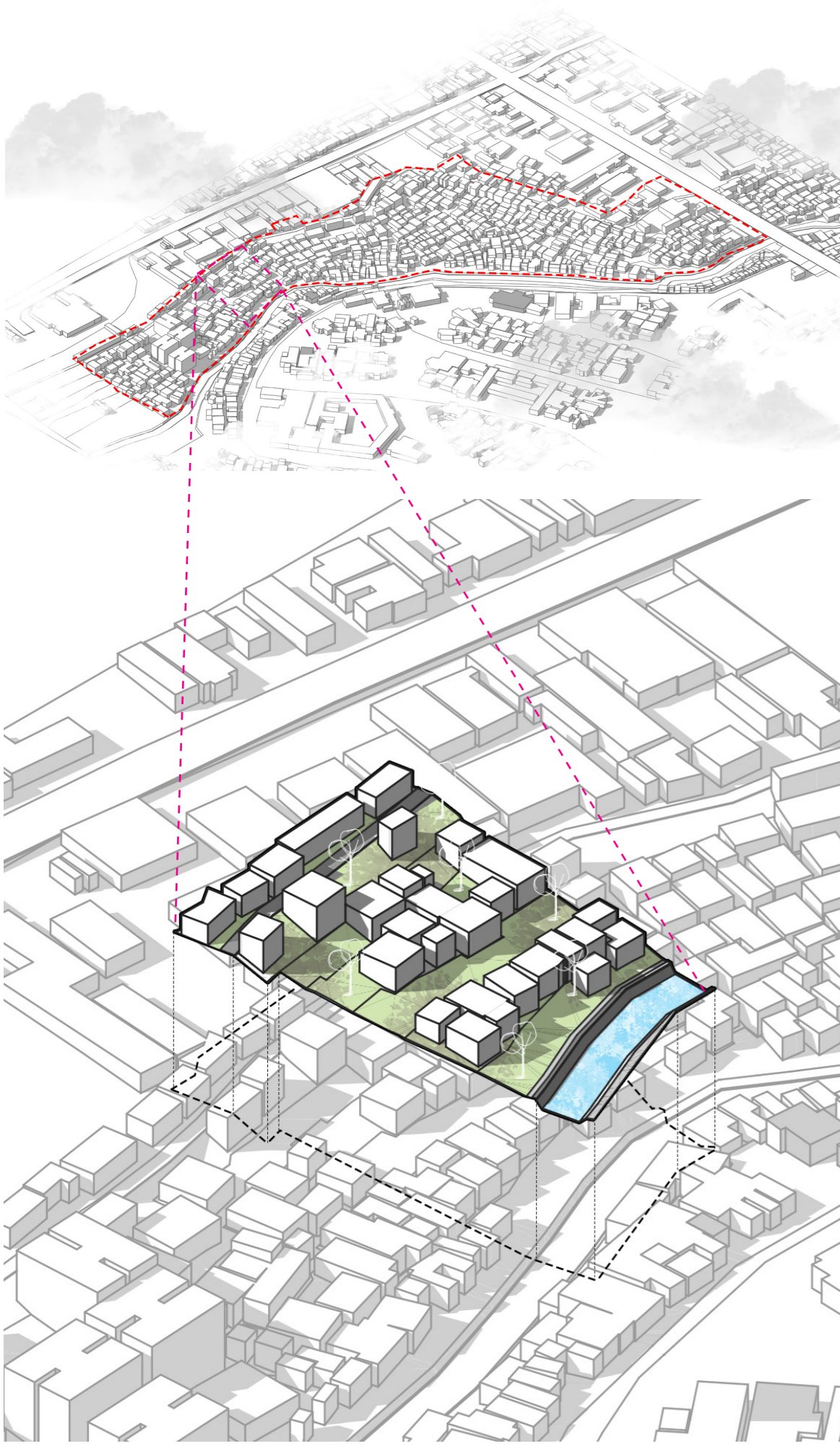
recoded jogoyudan upper level kampong (2018)



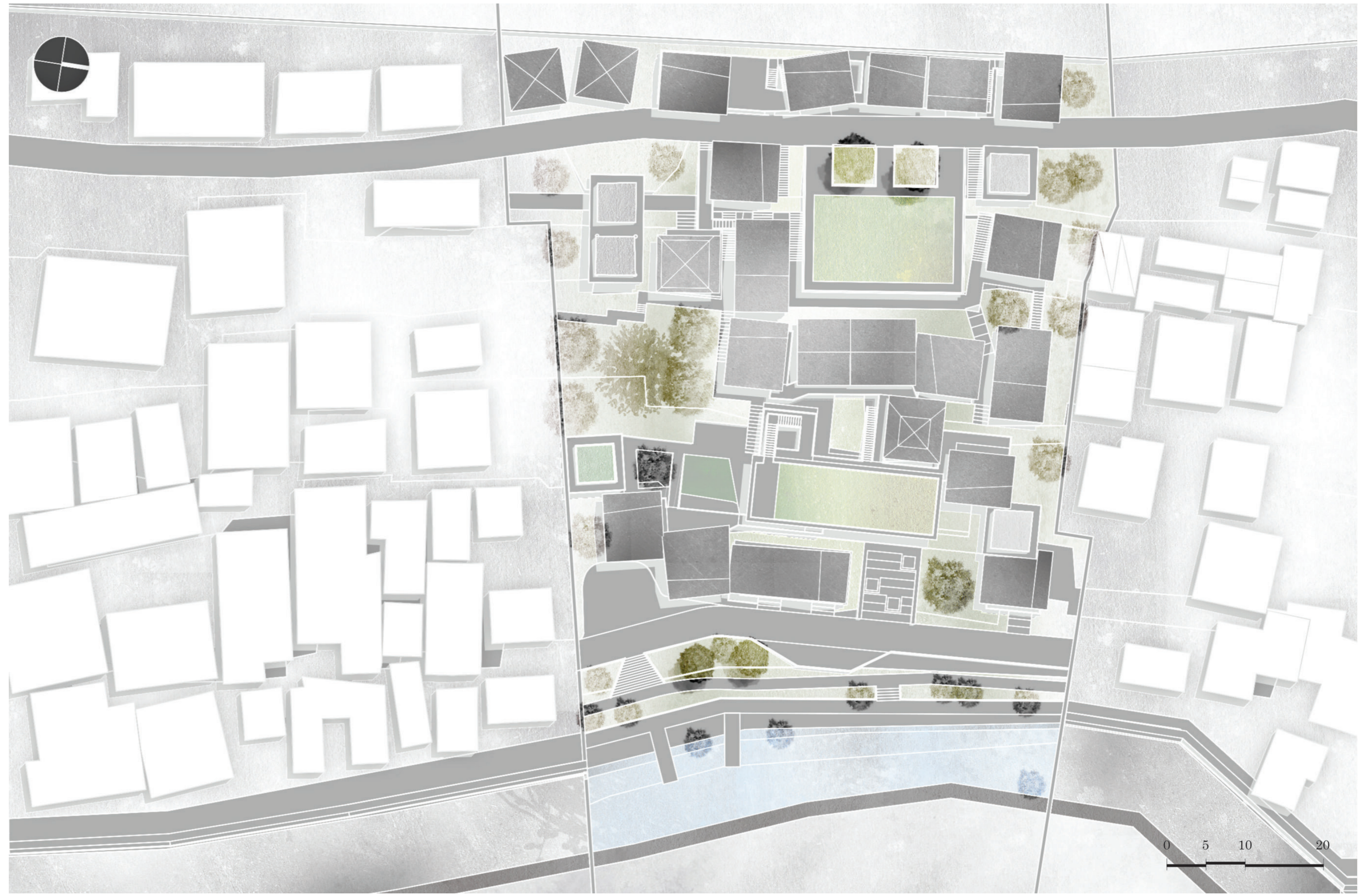
recoded jogoyudan middle kampong (2018)



recoded jogoyudan riverside kampong (2018)



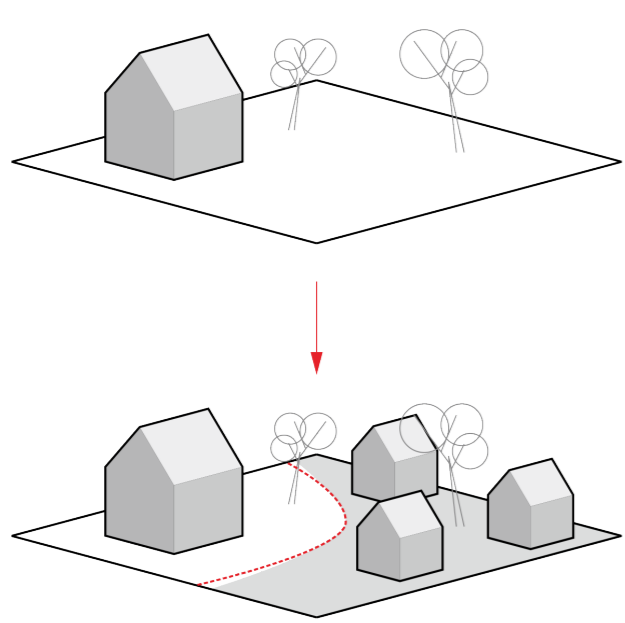
site project



visioned siteplan

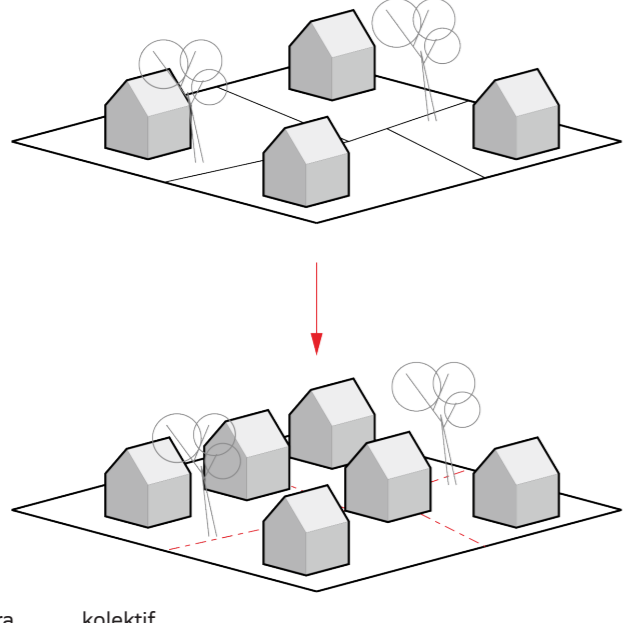
generated design approach, as an visioned solution

Magersari 1.0

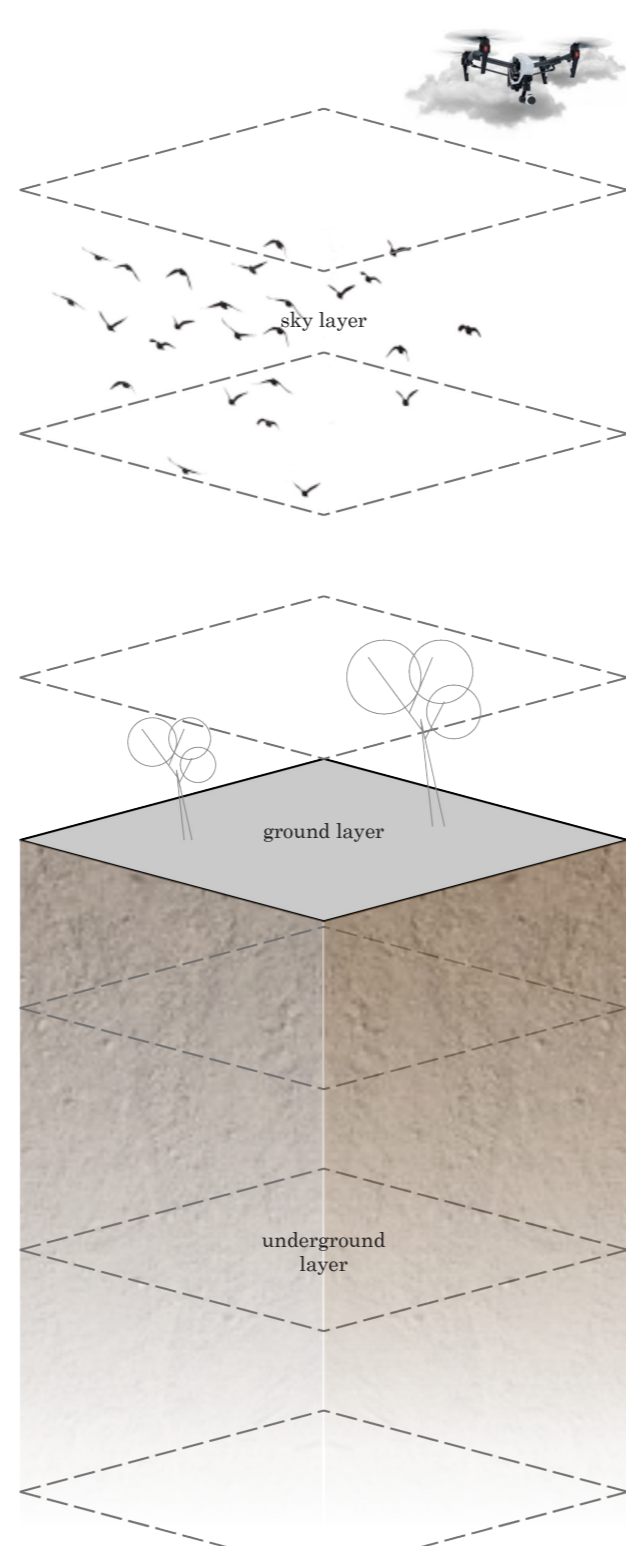


Tanah seseorang (biasanya bangsawan) di gunakan untuk membantu orang lain memiliki tempat tinggal dengan perjanjian yang disepakati.

Magersari 2.0



Tanah secara kolektif dimanfaatkan untuk kepentingan bersama dengan perjanjian yang disepakati.

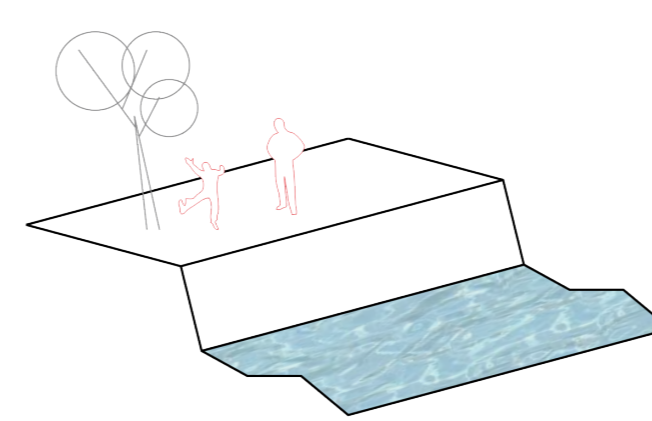


multilayer activity

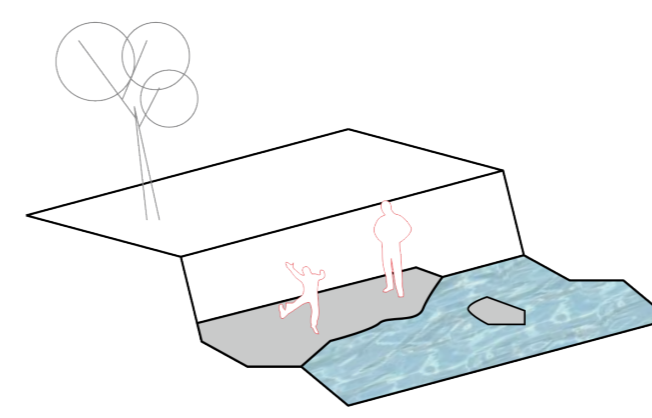
Lapisan udara yang nirpapan, memberikan kemungkinan lain terkait moda transportasi udara, ruang hidup, hingga energi terbarukan.

Lapisan tanah pada umumnya menjadi ruang bagi bangunan sehingga banyak ruang hijau terpenggal.

Ruang bawah tanah yang memiliki potensi menjadi moda transportasi di masa depan, sehingga yang nampak di permukaan lebih terorientasi kepada makhluk hidup.

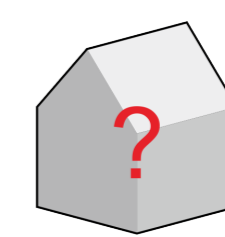


separated river/ embankment walls

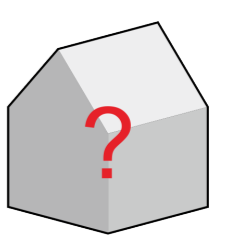


dynamic river landscapes

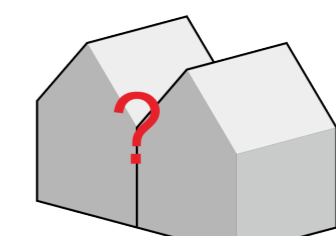
rethinking river



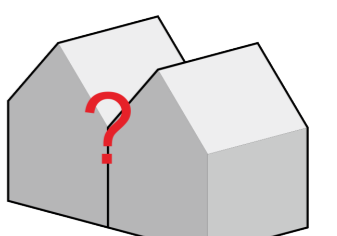
Design Language
A-1.4
B-5.3
C-11.17,29,33



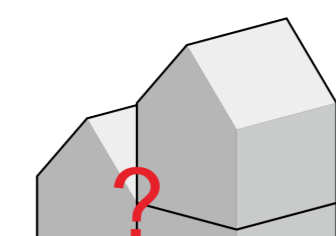
Design Language
A-1.4
B-5.3
C-11.17,29,33



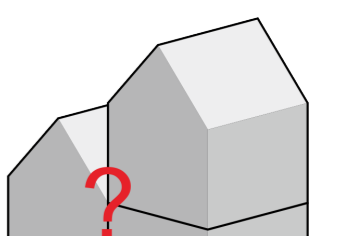
Design Language
A-1.4,3
B-5.3,1
C-11.17,29,33,16,32



Design Language
A-1.4,3
B-5.3,1
C-11.17,29,33,16,32

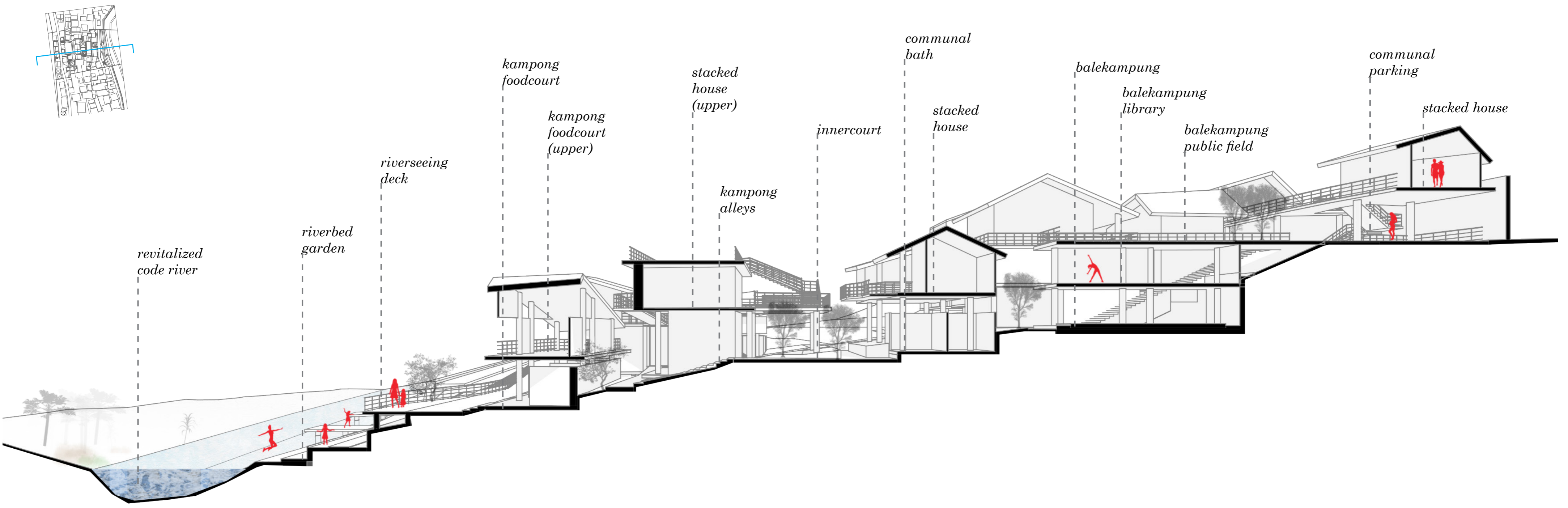


Design Language
A-1.4,3
B-5.3,1
C-11.17,29,33,16,32
44,52

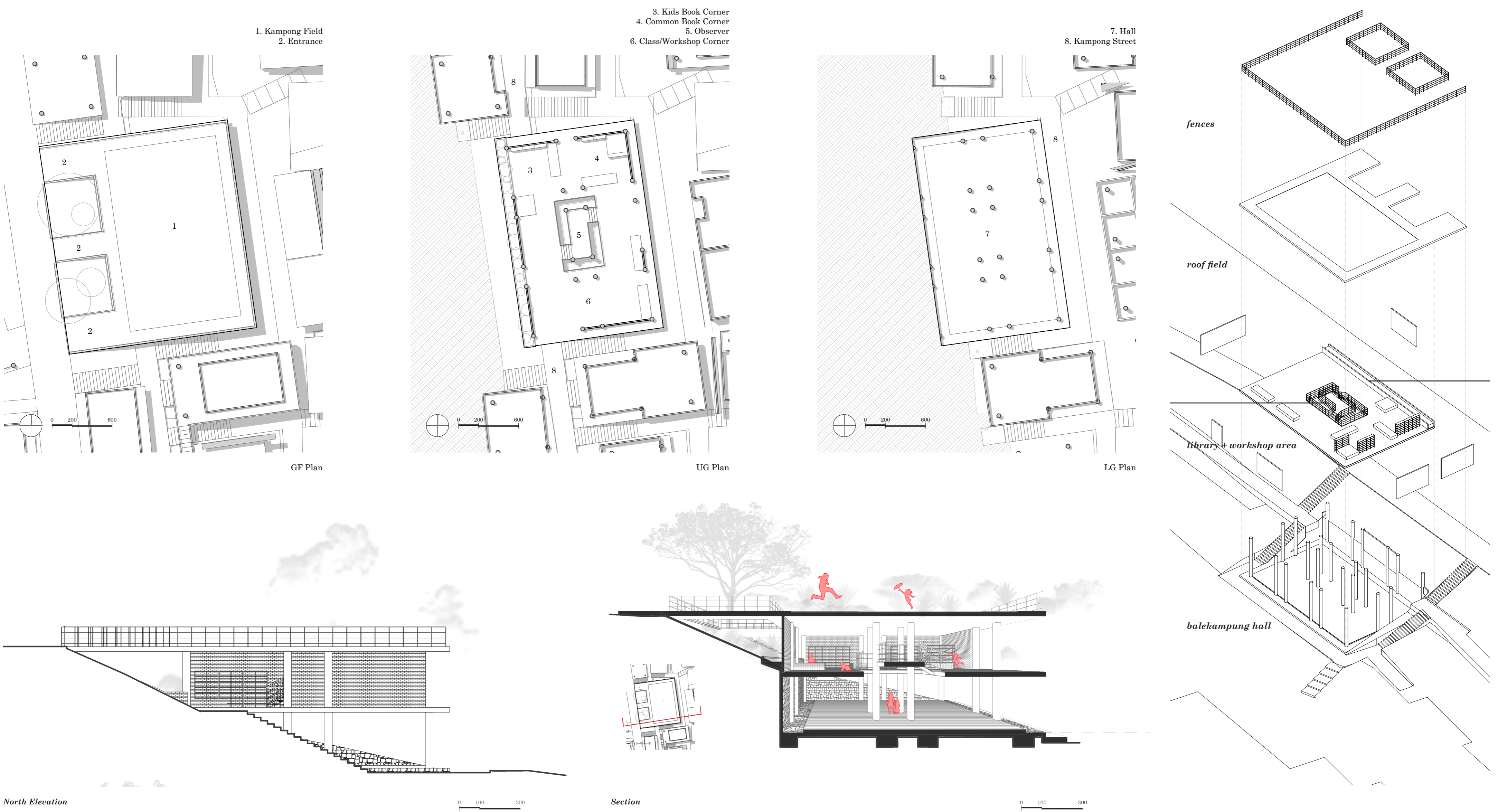


Design Language
A-1.4,3
B-5.3,1
C-11.17,29,33,16,32
44,52

recoding design language

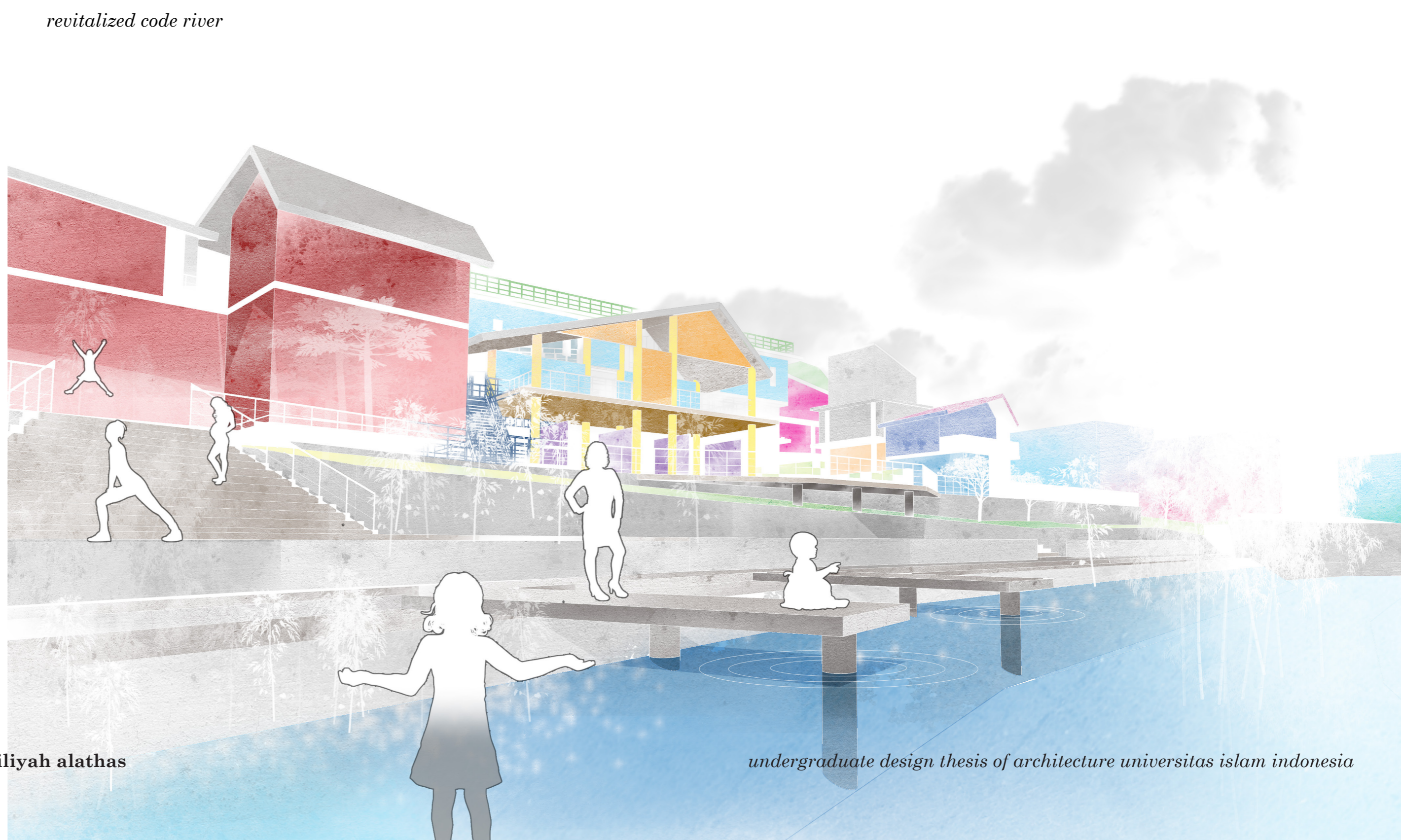


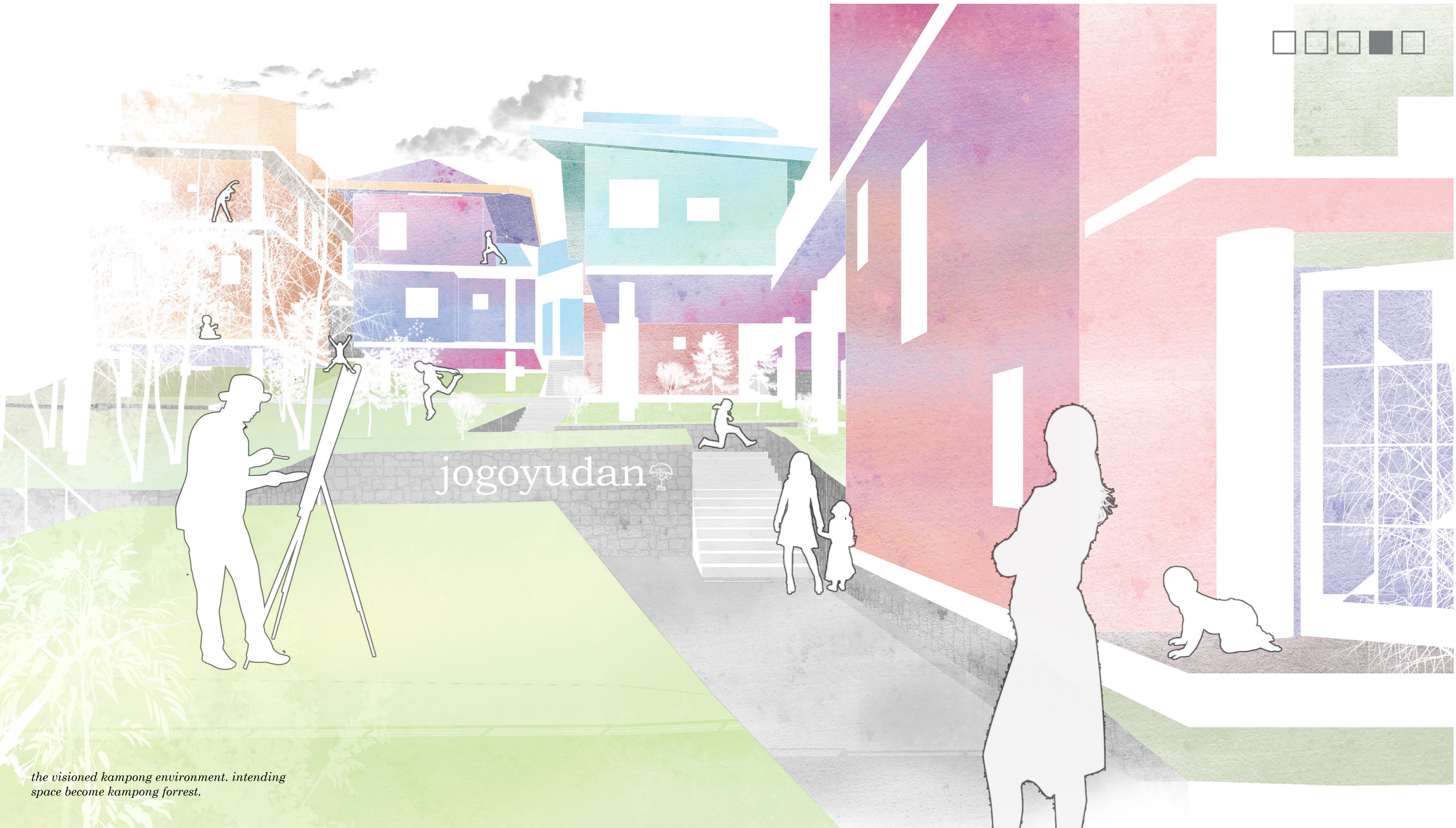
balekampung architectural plan



exterior view of balekampong

revitalized code river





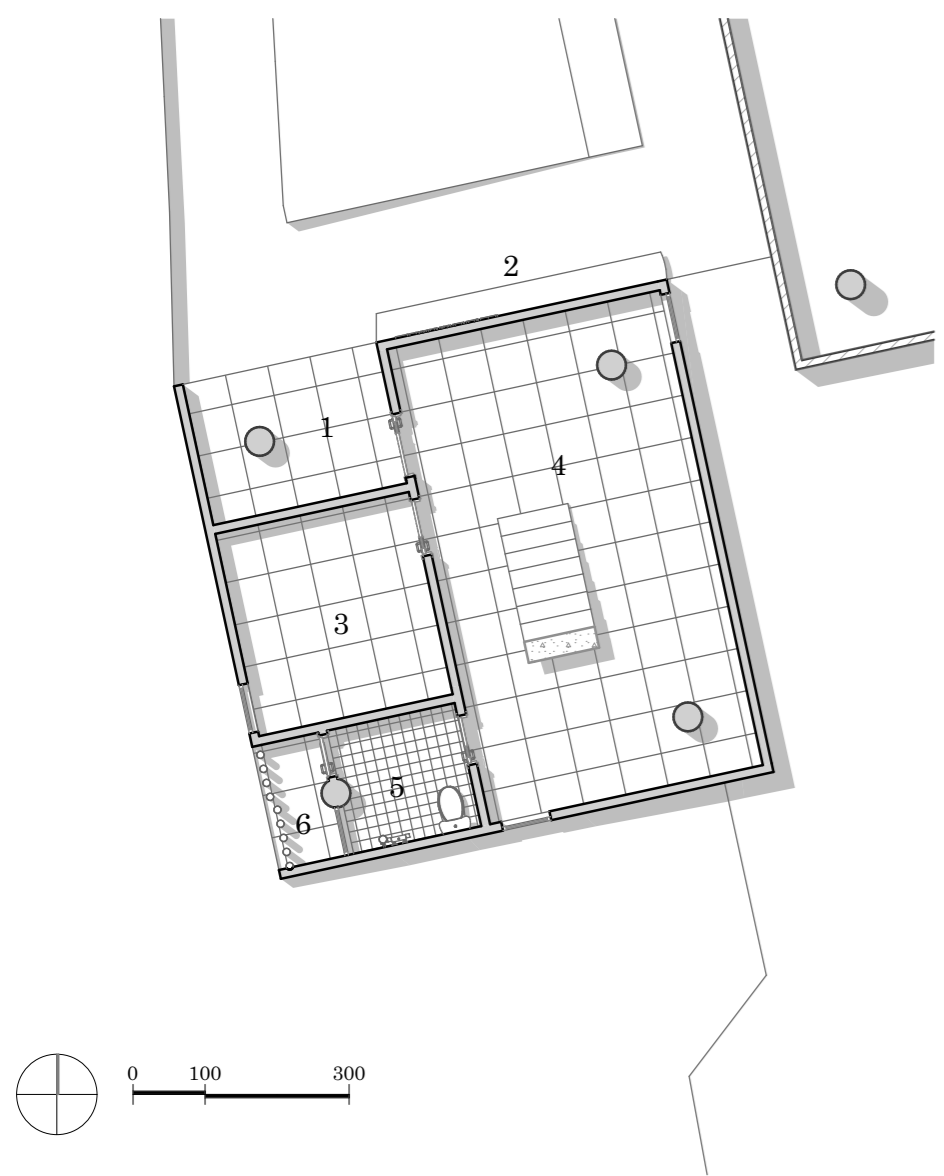
the visioned kampong environment. intending space become kampong forrest.

nguripimanuk.co architectural plan

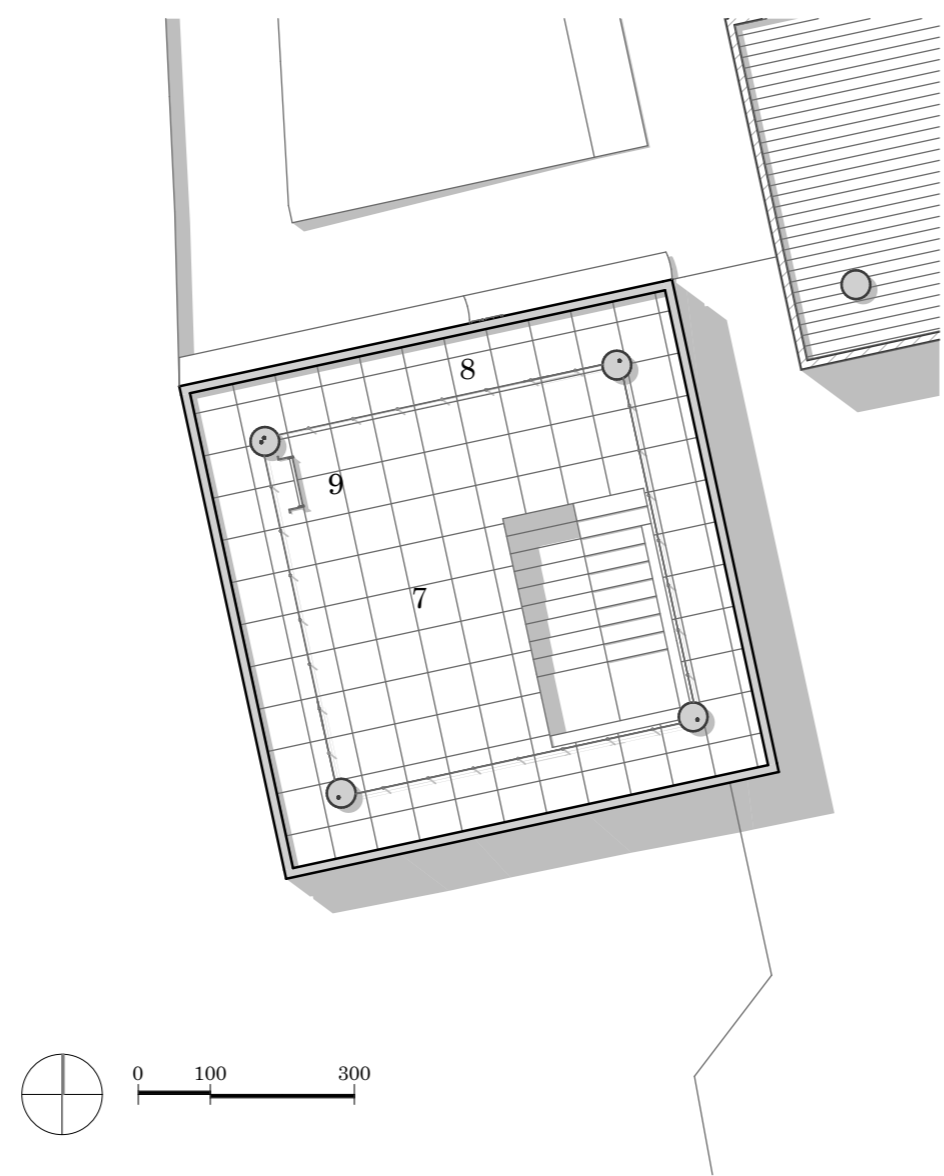
- 1 Terrace
- 2 Sitting
- 3 Bedroom
- 4 Living Room
- 5 Restroom
- 6 Washing Room

- 7 Petting Room
- 8 Birds Cage
- 9 Ladder

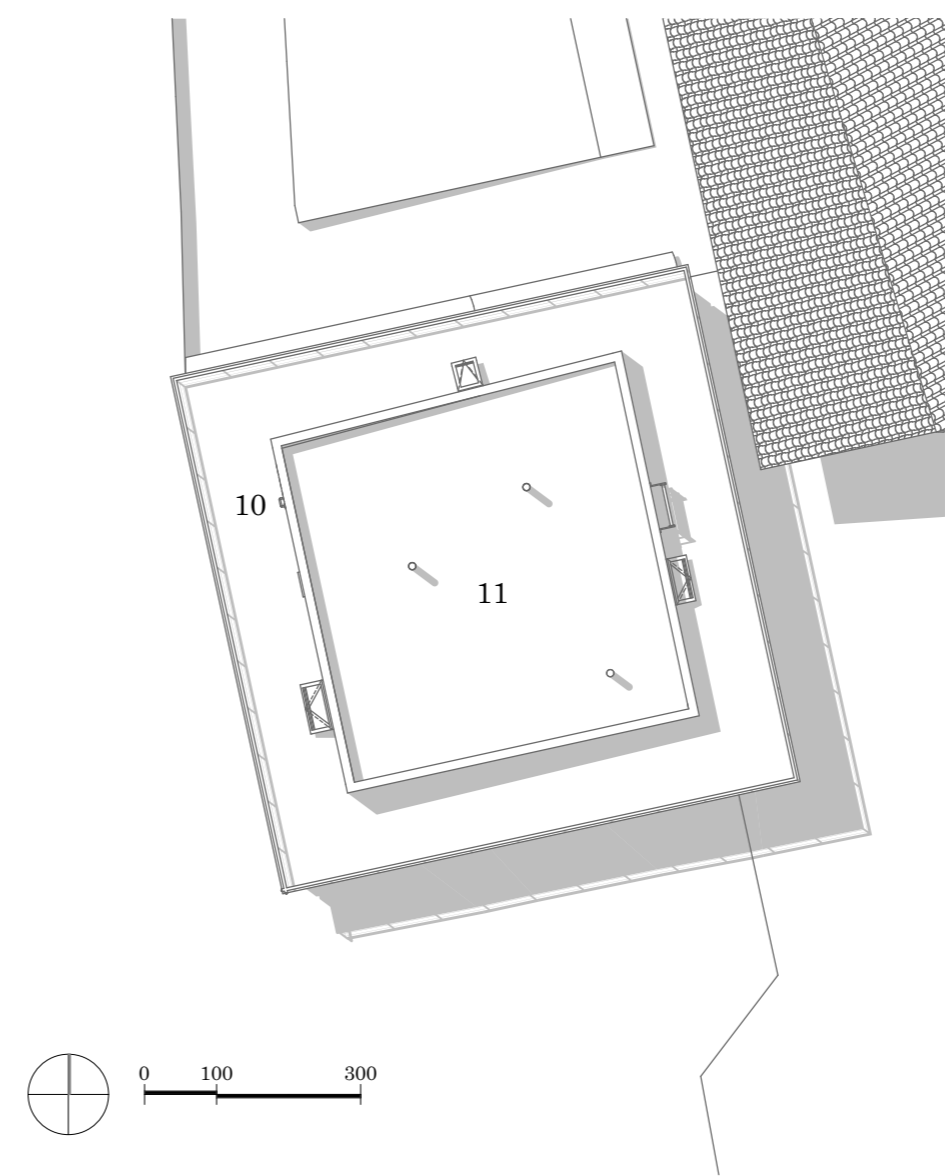
- 10 Upperdeck
- 11 Roofgarden



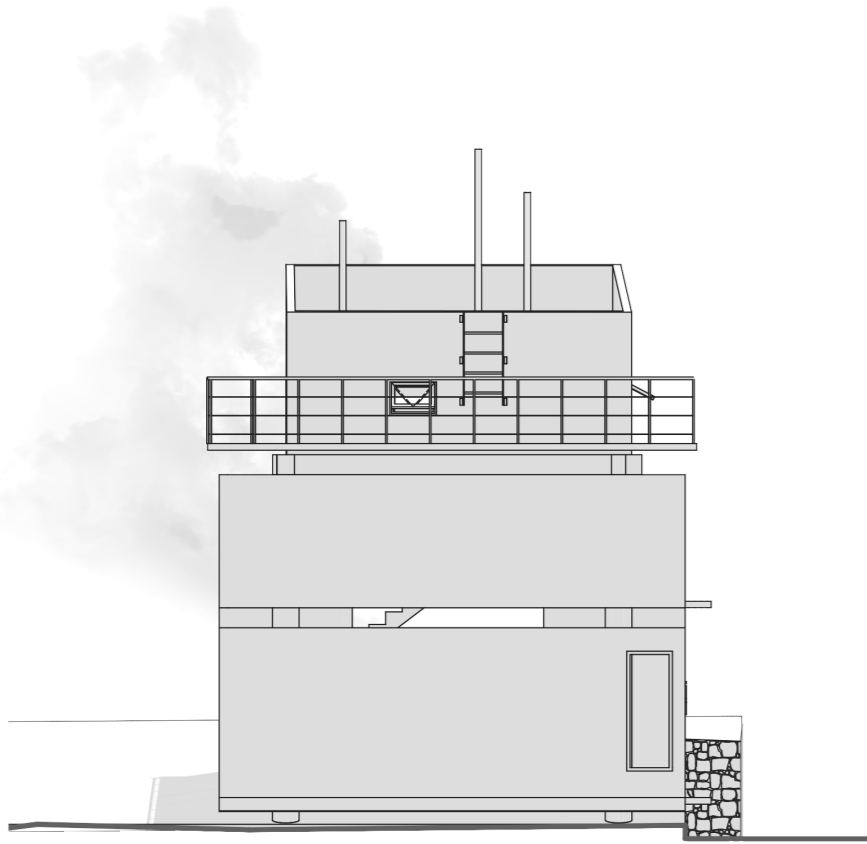
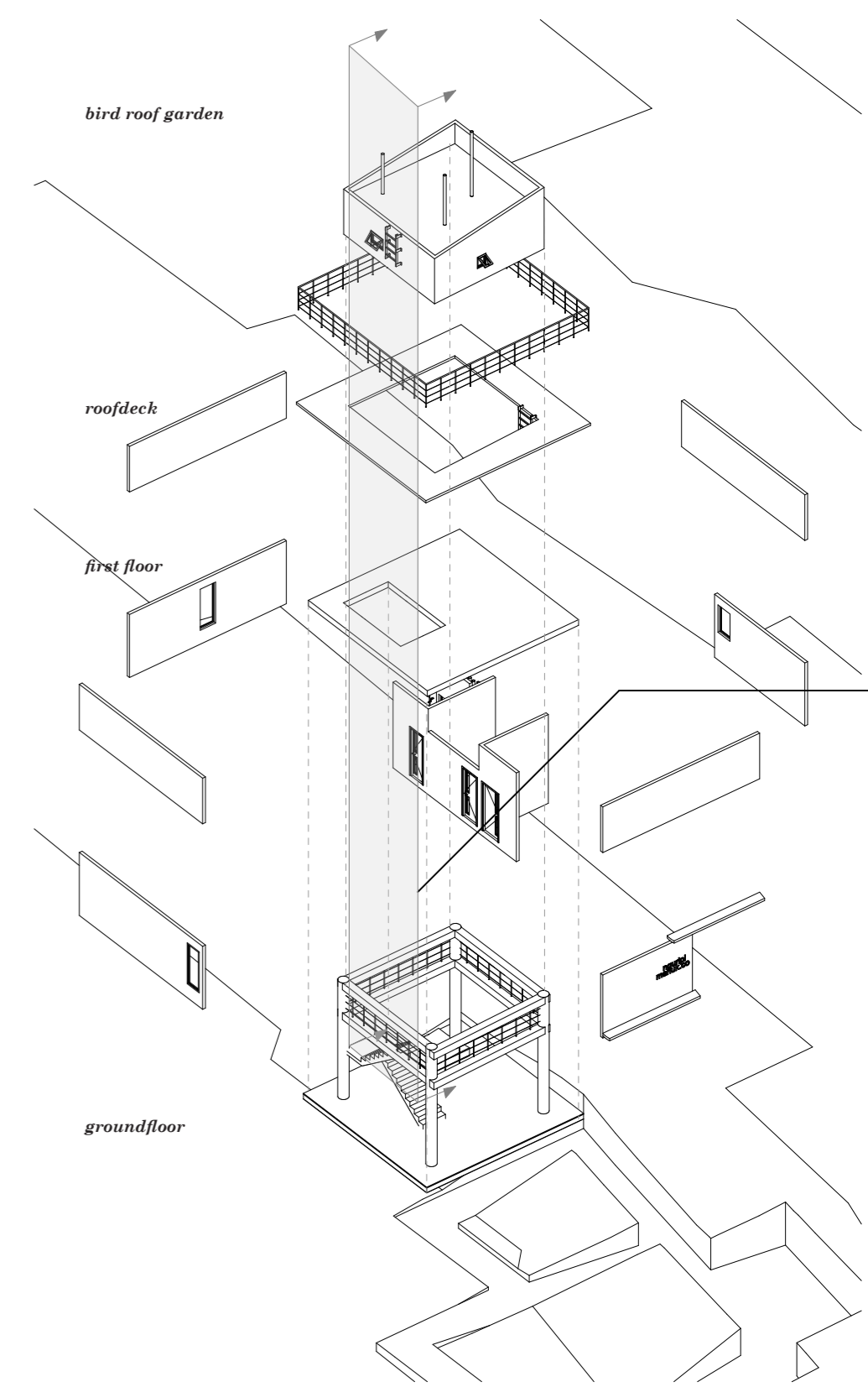
GF Plan



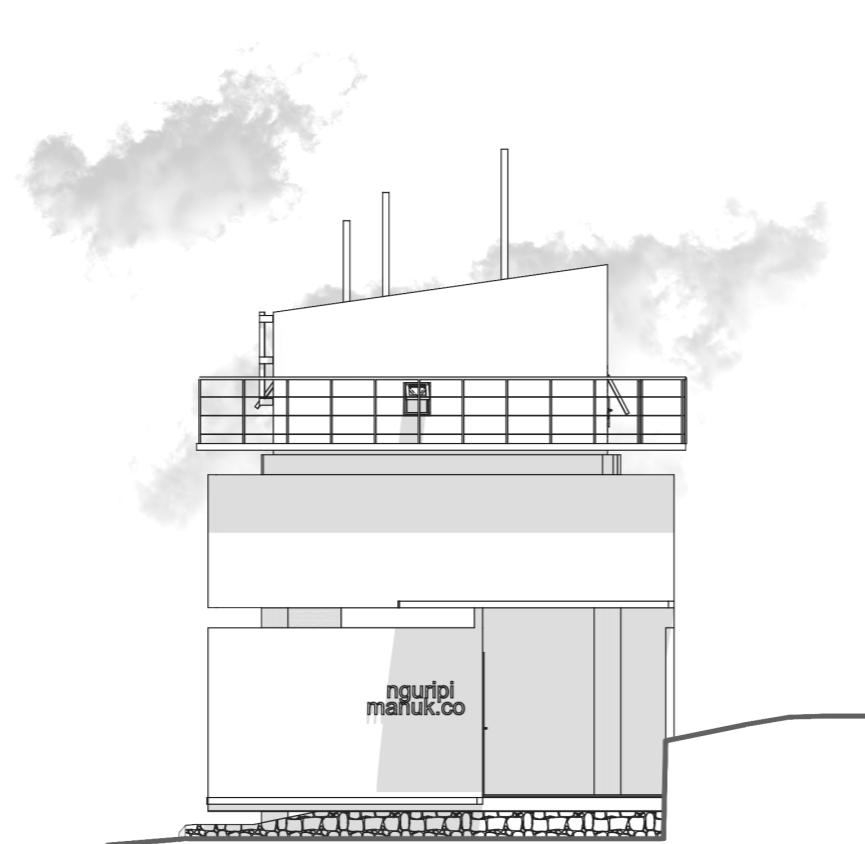
Lvl 1 Plan



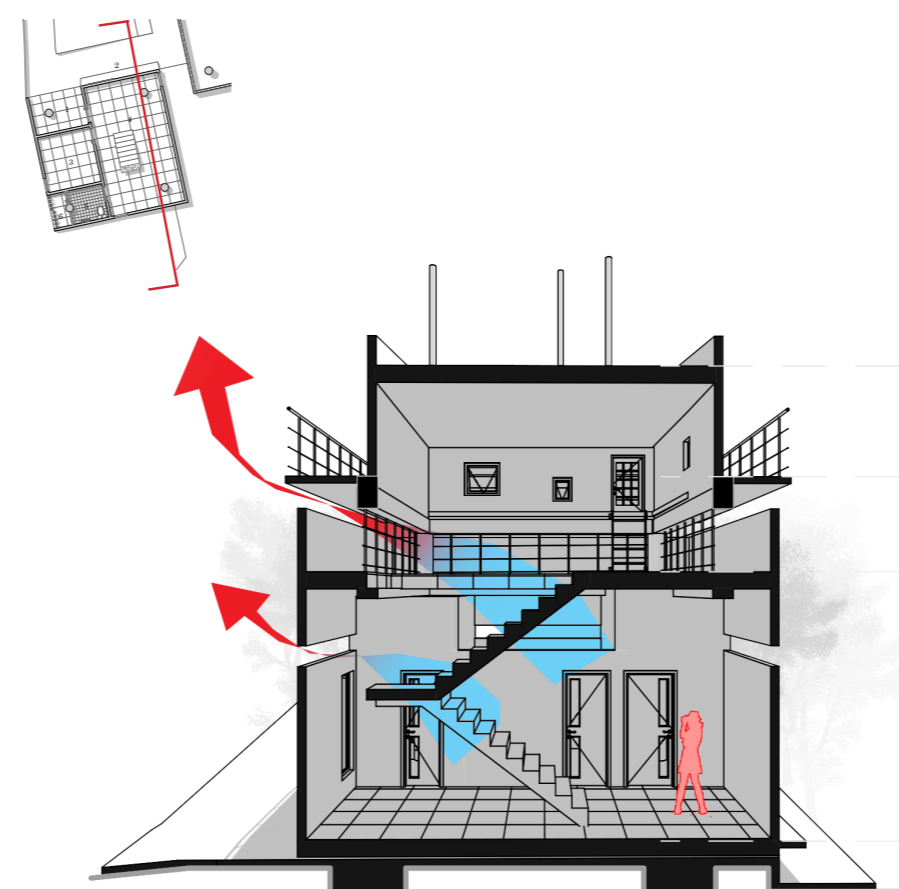
Lvl 2 Plan



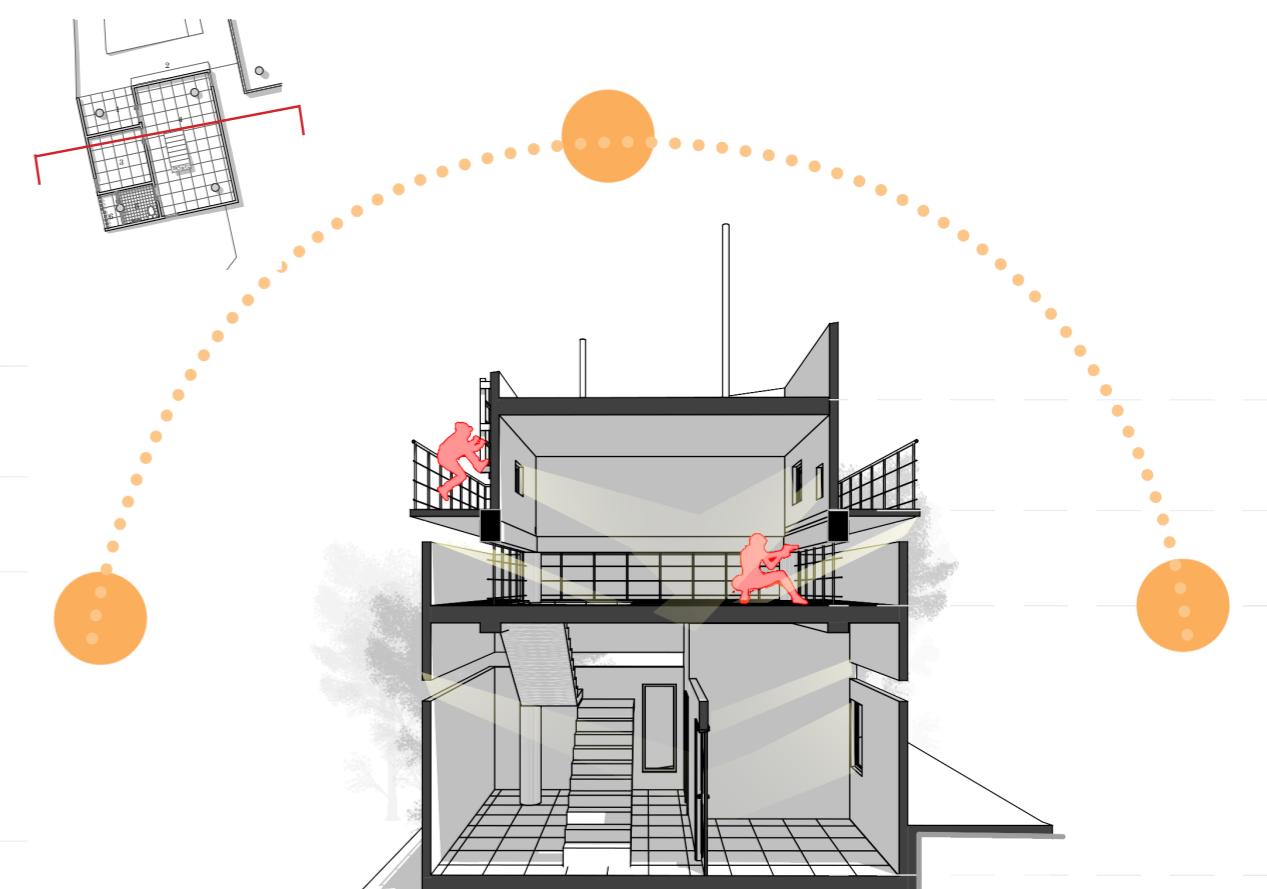
West View



South View



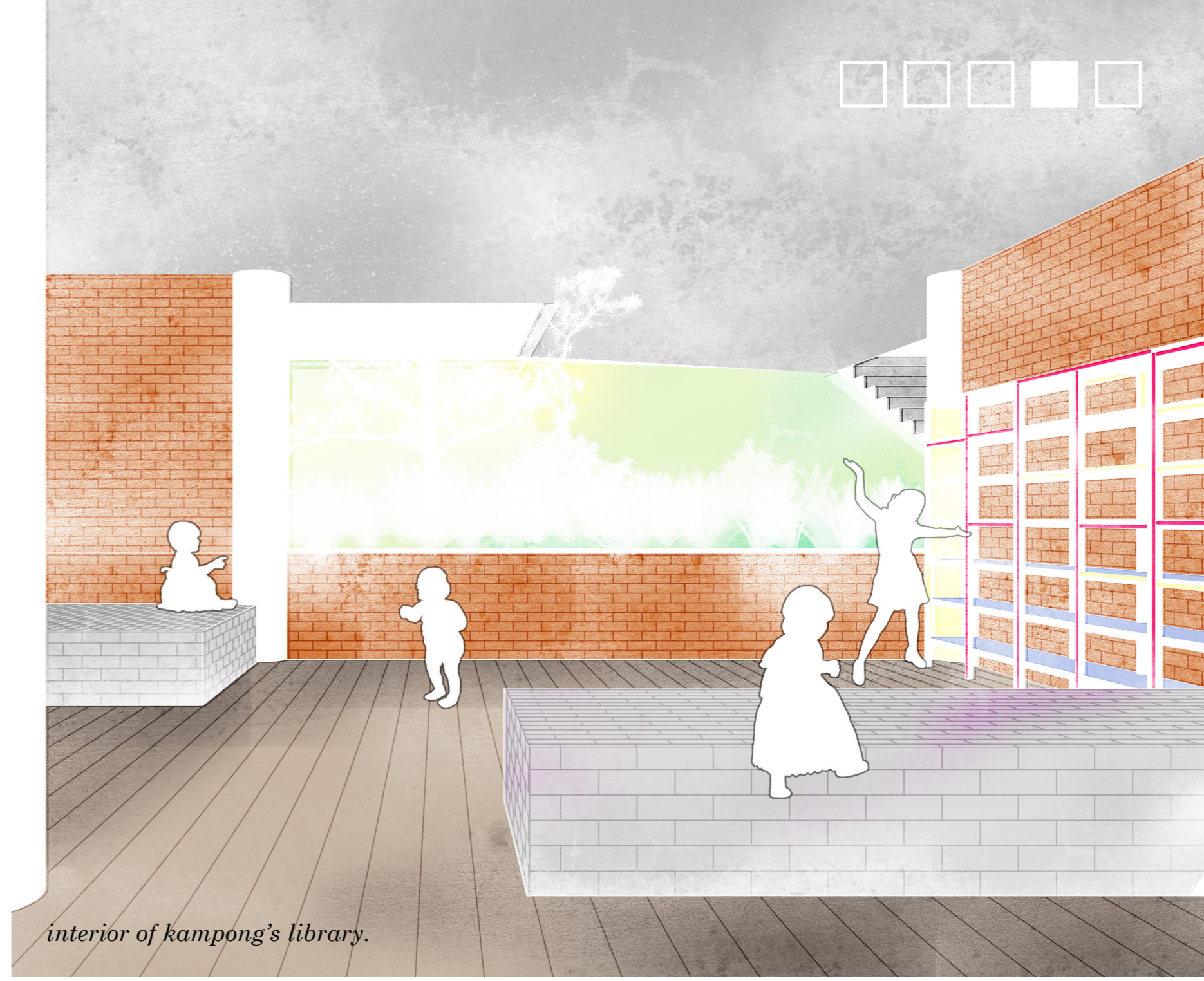
Passive Air Conditioning



Daylighting Consideration

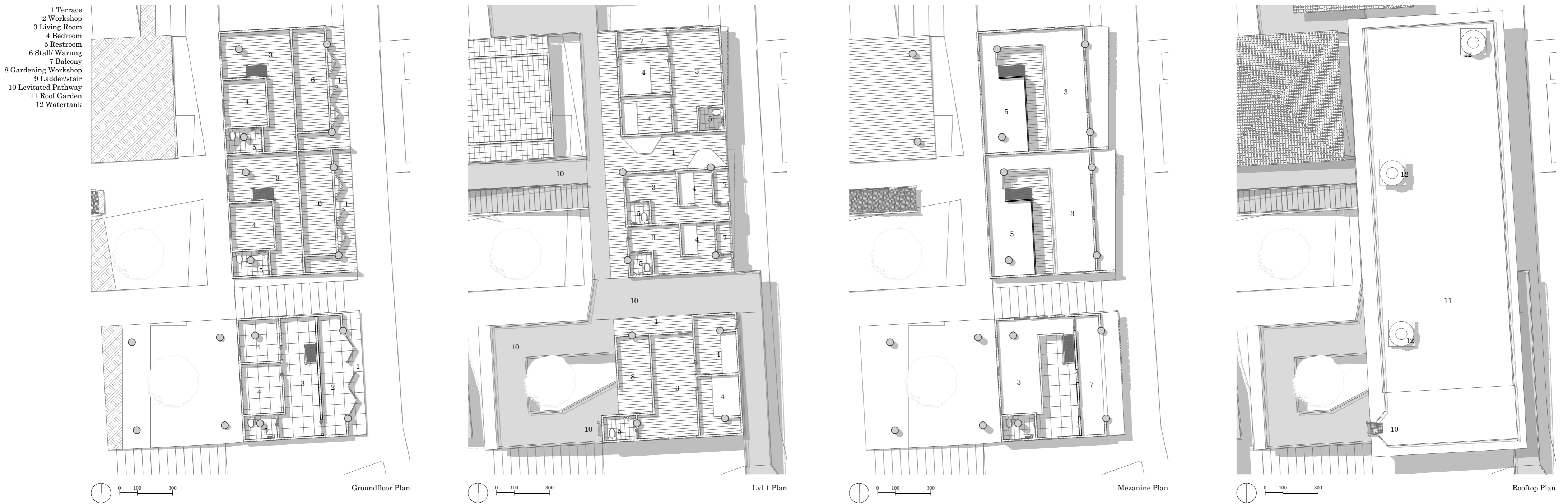


stacked house interior, shows the different leveling (mezzanine) become space in the house

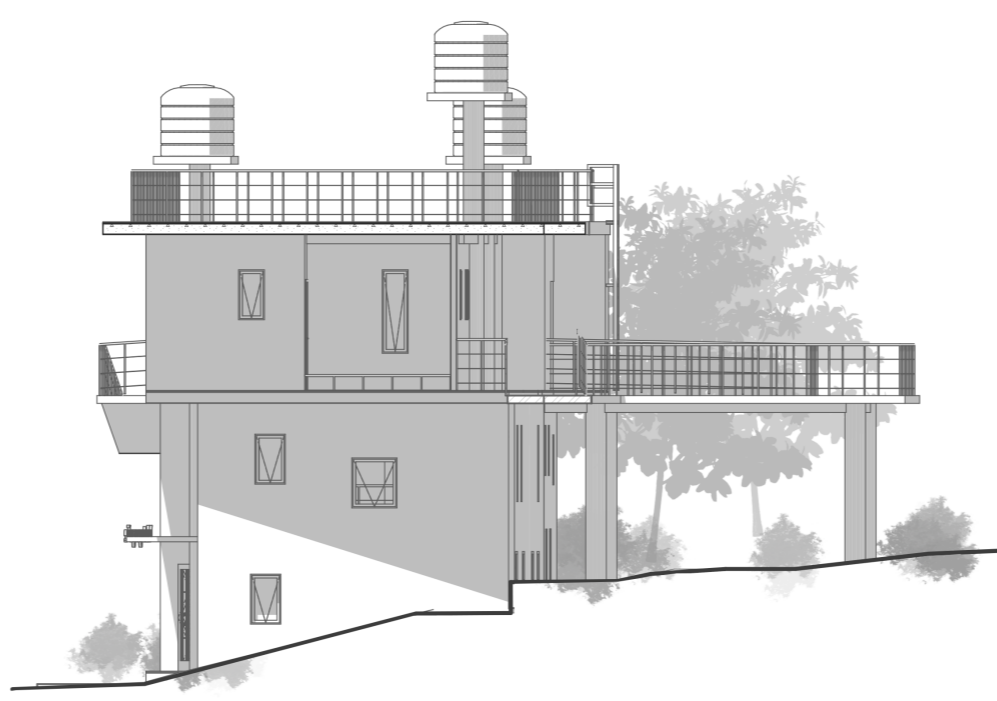


interior of kampong's library.

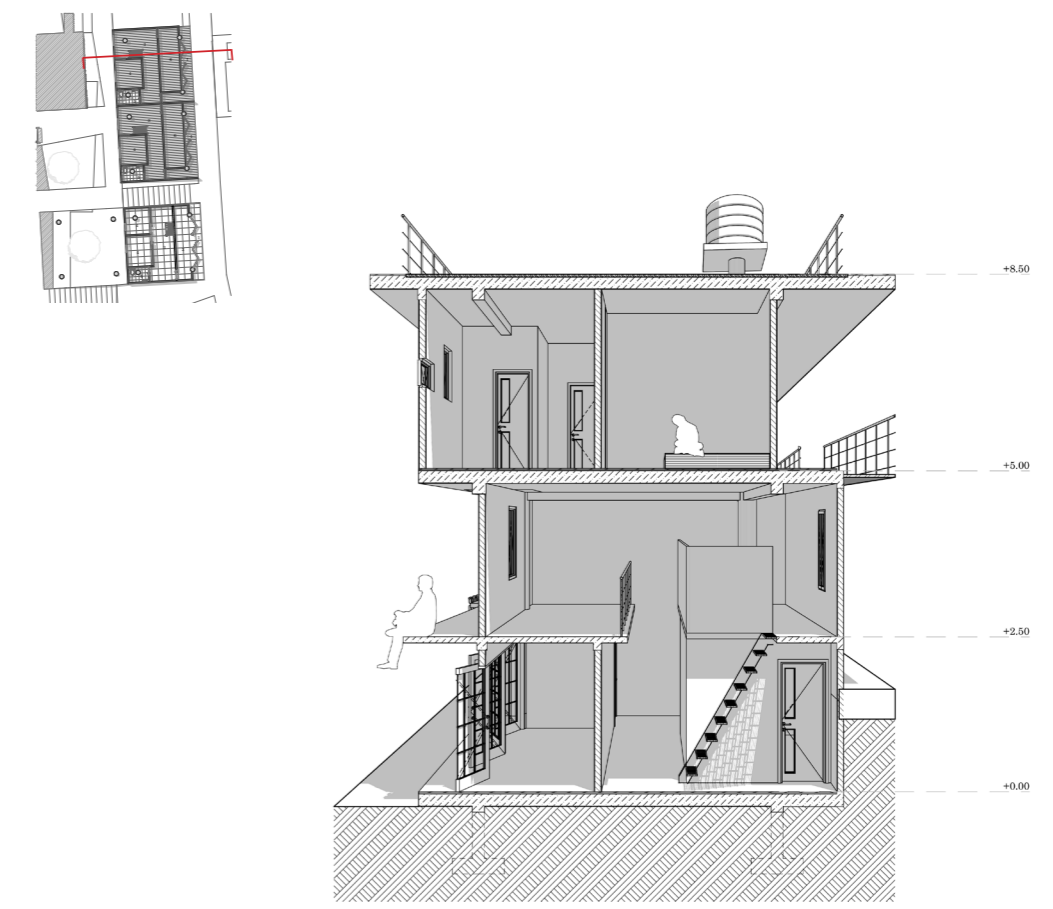
stacked house architectural plan



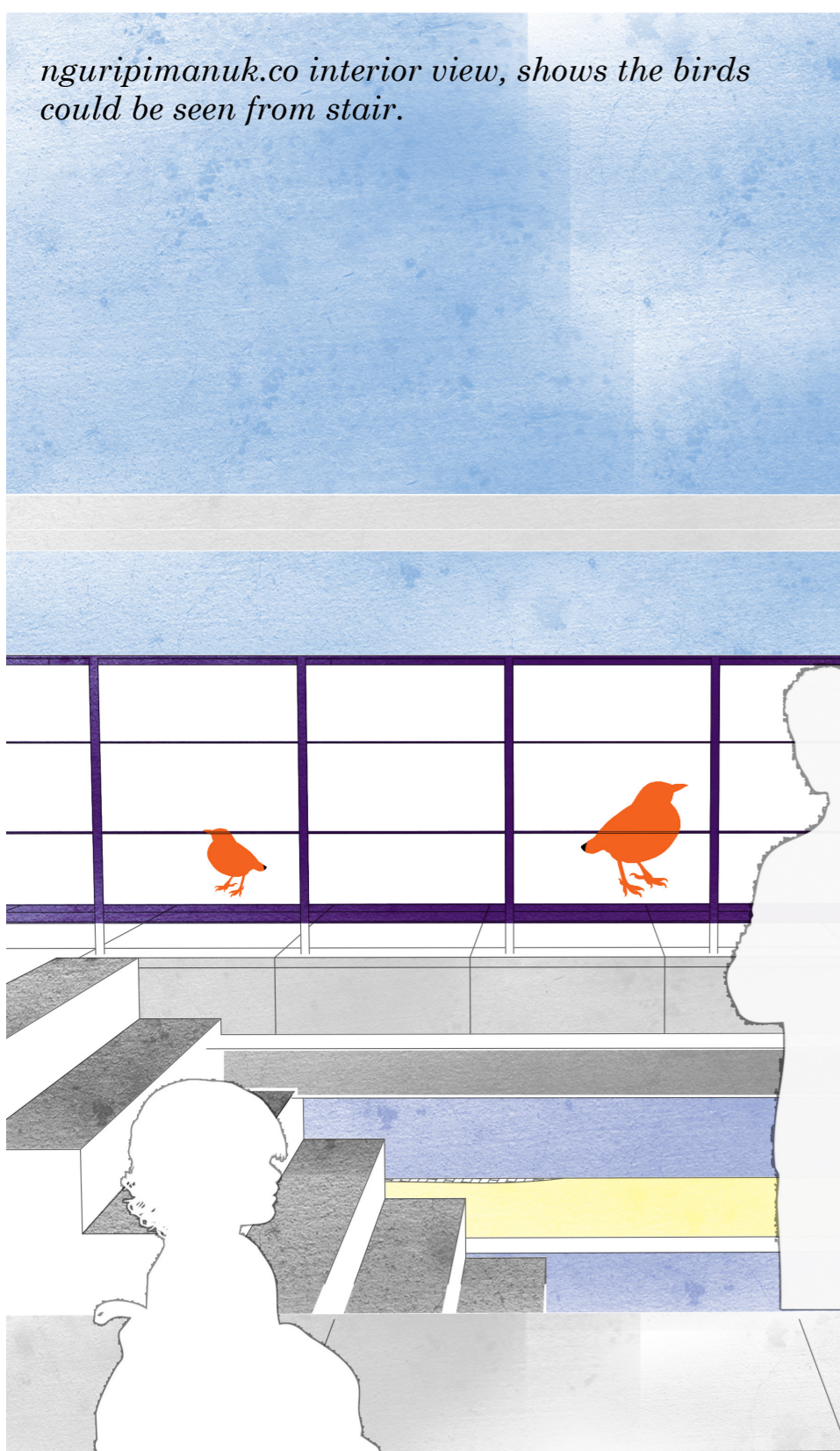
West View



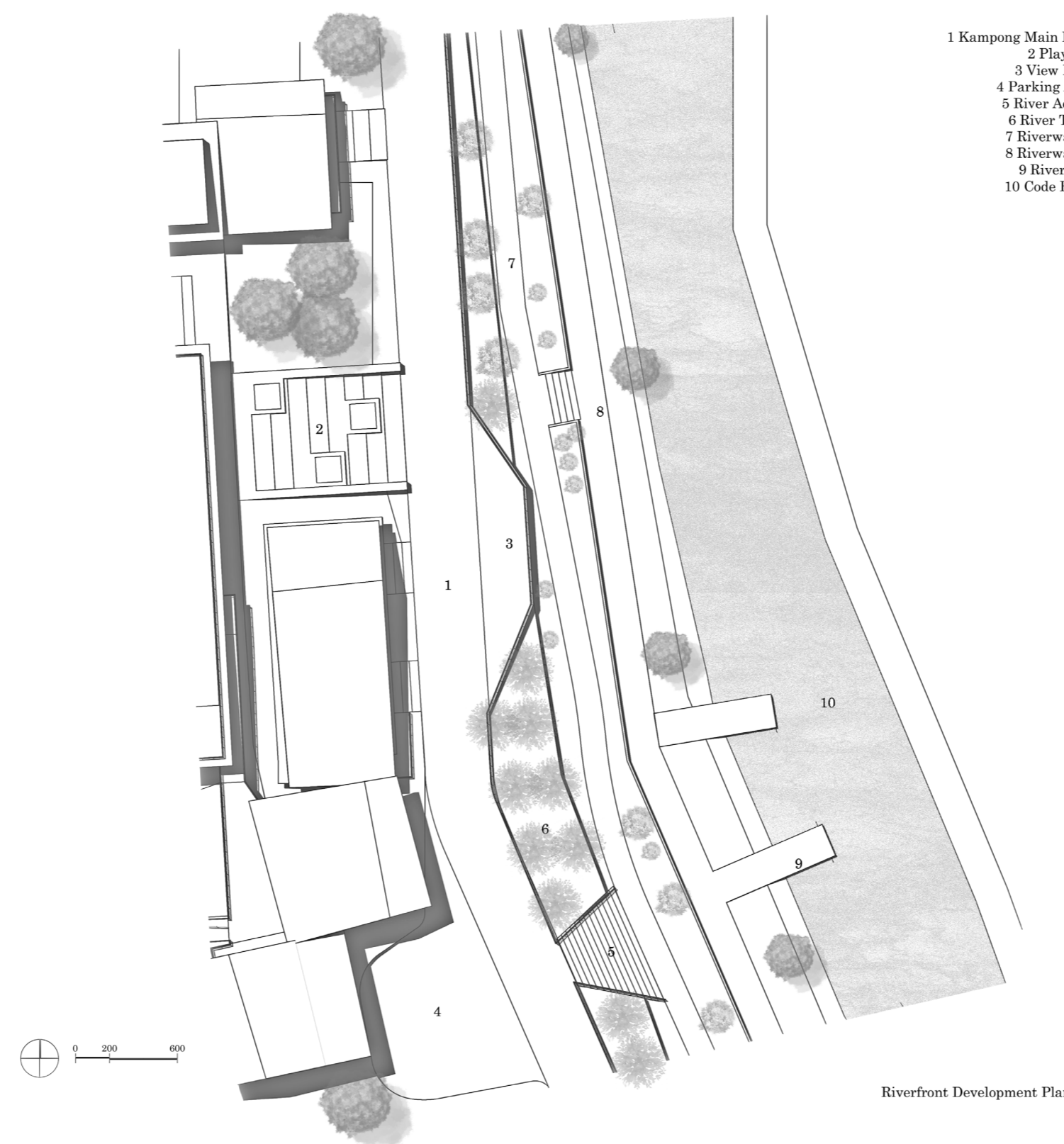
South View



Section



nguripimanuk.co interior view, shows the birds could be seen from stair.



Riverfront Development Plan

