

Data Pertumbuhan Laba

No	Perusahaan	TAHUN	Net Profit	Dnet Profit	Pertumbuhan Laba
71	multi prima sejahtera tbk	1998	-25,082		
		1999	8,306	33,388	-1.3312
		2000	-27,073	-35,379	-4.2595
		2001	-13,592	13,481	-0.4979
		2002	20,083	33,675	-2.4776
72	nipress tbk	1998	-18,053		
		1999	5,708	23,761	-1.3162
		2000	-10,594	-16,302	-2.8560
		2001	-3,223	7,371	-0.6958
		2002	7,972	11,195	-3.4735
73	prima alloy steel universal tbk	1998	-13,381		
		1999	2,039	15,420	-1.1524
		2000	4,139	2,100	1.0299
		2001	987	-3,152	-0.7615
		2002	22,883	21,896	22.1844
74	selamat sempurna tbk	1998	57,592		
		1999	40,361	-17,231	-0.2992
		2000	59,034	18,673	0.4626
		2001	54,645	-4,389	-0.0743
		2002	40,222	-14,423	-0.2639
75	funas ridean tbk	1998	2,482		
		1999	25,636	23,154	9.3288
		2000	94,933	69,297	2.7031
		2001	79,408	-15,525	-0.1635
		2002	73,515	-5,893	-0.0742
76	united tractors tbk	1998	-718,504		
		1999	456,686	1,175,190	-1.6356
		2000	6,130	-450,556	-0.9866
		2001	238,009	231,879	37.8269
		2002	300,616	62,607	0.2630
77	bayer indonesia tbk	1998	-13,453		
		1999	41,065	54,518	-4.0525
		2000	60,509	19,444	0.4735
		2001	16,769	-43,740	-0.7229
		2002	152,436	135,667	8.0903
78	dankos laboratories tbk	1998	-62,713		
		1999	50,522	113,235	-1.8056
		2000	45,553	-4,969	-0.0984
		2001	59,026	13,473	0.2958
		2002	93,174	34,148	0.5785
79	darya-varia laboratoria tbk	1998	-112,803		
		1999	4,356	117,159	-1.0386
		2000	-16,122	-20,478	-4.7011
		2001	-1,933	14,289	-0.8863
		2002	65,531	67,364	-36.7507
80	indofarma tbk	1998	41,065		
		1999	117,009	75,944	1.8494
		2000	110,291	-6,718	-0.0574
		2001	122,542	12,251	0.1111
		2002	-59,826	-182,368	-1.4882
81	kalbe farma tbk	1998	-506,062		
		1999	209,183	715,225	-1.4133
		2000	-28,359	-237,522	-1.1356
		2001	32,665	61,024	-2.1518
		2002	266,933	234,268	7.1718
82	kimia farma tbk	1998	70,870		
		1999	98,246	27,376	0.3863
		2000	169,819	71,573	0.7285
		2001	99,595	-70,224	-0.4135
		2002	35,408	-64,187	-0.6445
83	merck indonesia tbk	1998	6,783		
		1999	23,059	16,276	2.3995
		2000	49,369	26,310	1.1410
		2001	56,398	7,029	0.1424
		2002	37,429	-18,969	-0.3363
84	schering plough indonesia tbk	1998	-658		
		1999	-6,484	-5,826	8.8541
		2000	-4,418	2,066	-0.3186
		2001	-9,642	-5,224	1.1824
		2002	-1,048	8,594	-0.8913
85	tempo scan pasific tbk	1998	152,460		
		1999	89,372	-63,088	-0.4138
		2000	347,787	258,415	2.8915
		2001	316,927	-30,860	-0.0887
		2002	316,307	-620	-0.0020

Data Pertumbuhan Laba

No	Perusahaan	TAHUN	Net Profit	Dnet Profit	Pertumbuhan Laba
57	pelangi indah canindo tbk	1998	-256,270		
		1999	24,748	281,018	-1.0966
		2000	17,368	-7,380	-0.2982
		2001	1,279	-16,089	-0.9264
		2002	27,425	26,146	20.4425
58	tembaga mulia semanan tbk	1998	6,184		
		1999	4,752	-1,432	-0.2316
		2000	7,093	2,341	0.4926
		2001	19,400	12,307	1.7351
		2002	21,069	1,669	0.0860
59	tira austenite tbk	1998	-1,449		
		1999	3,405	4,854	-3.3499
		2000	-13,676	-17,081	-5.0164
		2001	6,893	20,569	-1.5040
		2002	3,554	-3,339	-0.4844
60	andhi chandra automotive products tbk	1998	6,077		
		1999	8,161	2,084	0.3429
		2000	11,631	3,470	0.4252
		2001	15,603	3,972	0.3415
		2002	11,605	-3,998	-0.2562
61	astra international tbk	1998	-3,688,719		
		1999	1,487,296	5,176,015	-1.4032
		2000	-238,707	-1,726,003	-1.1605
		2001	844,511	1,083,218	-4.5379
		2002	3,636,608	2,792,097	3.3062
62	astra autopart tbk	1998	-200,301		
		1999	160,277	360,578	-1.8002
		2000	106,332	-53,945	-0.3366
		2001	255,672	149,340	1.4045
		2002	257,379	1,707	0.0067
63	branta mulia tbk	1998	-131,051		
		1999	189,869	320,920	-2.4488
		2000	21,623	-168,246	-0.8861
		2001	71,189	49,566	2.2923
		2002	109,640	38,451	0.5401
64	gajah tunggal tbk	1998	-204,698		
		1999	-485,732	-281,034	1.3729
		2000	-3,073,119	-2,587,387	5.3268
		2001	-1,234,185	1,838,934	-0.5984
		2002	3,808,287	5,042,472	-4.0857
65	goodyear indonesia tbk	1998	50,308		
		1999	88,151	37,843	0.7522
		2000	37,224	-50,927	-0.5777
		2001	11,726	25,498	-0.6850
		2002	16,455	4,729	0.4033
66	GT petrochem industries tbk	1998	-312,744		
		1999	-698,534	-385,790	1.2336
		2000	-2,379,405	-1,680,871	2.4063
		2001	-910,435	1,468,970	-0.6174
		2002	2,079,920	2,990,355	-3.2845
67	hexindo adiperkasa tbk	1998	-97,596		
		1999	75,983	173,579	-1.7785
		2000	30,795	-45,188	-0.5947
		2001	43,221	12,426	0.4035
		2002	38,983	-4,238	-0.0981
68	indomobil sukses internasional tbk	1998	-600,750		
		1999	98,652	699,402	-1.1642
		2000	-302,827	-401,479	-4.0696
		2001	-51,418	251,409	-0.8302
		2002	970,916	1,022,334	-19.8828
69	indospring tbk	1998	15,359		
		1999	6,027	-9,332	-0.6076
		2000	-13,650	-19,677	-3.2648
		2001	6,327	19,977	-1.4635
		2002	30,894	24,567	3.8829
70	intraco penta tbk	1998	206		
		1999	44,236	44,030	213.7379
		2000	5,609	-38,627	-0.8732
		2001	15,229	9,620	1.7151
		2002	15,724	495	0.0325

Data Pertumbuhan Laba

No	Perusahaan	TAHUN	Net Profit	Dnet Profit	Pertumbuhan Laba
43	plaspack prima industri tbk	1998	5		
		1999	54	49	9.8000
		2000	700	646	11.9630
		2001	2.632	1.932	2.7600
		2002	1.524	-1.108	-0.4210
44	siwani makmur tbk	1998	9.122		
		1999	3.592	-5.530	-0.6062
		2000	8.626	5.034	1.4014
		2001	3.075	-5.551	-0.6435
		2002	1.064	-2.011	-0.6540
45	summiplast interbenua tbk	1998	14.291		
		1999	13.018	-1.273	-0.0891
		2000	14.957	1.939	0.1489
		2001	8.849	-6.108	-0.4084
		2002	-2.703	-11.552	-1.3055
46	trias sentosa tbk	1998	-62.047		
		1999	145.660	207.707	-3.3476
		2000	-161.465	-307.125	-2.1085
		2001	297.563	459.028	-2.8429
		2002	220.159	-77.404	-0.2601
47	wahana jaya perkasa tbk	1998	799		
		1999	-112.417	-113.216	-141.6971
		2000	-45.594	66.823	-0.5944
		2001	-204.499	-158.905	3.4852
		2002	-90.138	114.361	-0.5592
48	alakasa industrindo tbk	1998	-52.083		
		1999	-767	51.316	-0.9853
		2000	-43.438	-42.671	55.6336
		2001	-44.944	-1.506	0.0347
		2002	83.602	128.546	-2.8601
49	alummino light metal industries tbk	1998	60.047		
		1999	88.283	28.236	0.4702
		2000	2.901	-85.382	-0.9671
		2001	33.566	30.665	10.5705
		2002	-14.524	-48.090	-1.4327
50	betonjaya manunggal tbk	1998	466		
		1999	139	-327	-0.7017
		2000	350	211	1.5180
		2001	1.235	885	2.5286
		2002	2.374	1.139	0.9223
51	citra tubindo tbk	1998	56.281		
		1999	23.534	-32.747	-0.5818
		2000	3.140	-20.394	-0.8666
		2001	16.098	12.958	4.1268
		2002	12.619	-3.479	-0.2161
52	indal aluminium industri tbk	1998	-15.631		
		1999	15.096	30.727	-1.9658
		2000	-9.949	-25.045	-1.6590
		2001	1.355	11.304	-1.1362
		2002	377	-978	-0.7218
53	jakarta kyoei steel works ltd tbk	1998	-177.905		
		1999	-45.200	132.705	-0.7459
		2000	-209.248	-164.048	3.6294
		2001	-51.374	157.874	-0.7545
		2002	19.948	71.322	-1.3883
54	jaya pari steel tbk	1998	-28.691		
		1999	1.221	29.912	-1.0426
		2000	-8.833	-10.054	-8.2342
		2001	9.946	18.779	-2.1260
		2002	15.863	5.917	0.5949
55	lion mesh prima tbk	1998	-6.384		
		1999	938	7.322	-1.1469
		2000	-877	-1.815	-1.9350
		2001	959	1.836	-2.0935
		2002	1.479	520	0.5422
56	lion metal works tbk	1998	-1.990		
		1999	7.651	9.641	-4.8447
		2000	12.275	4.624	0.6044
		2001	11.729	-546	-0.0445
		2002	11.876	147	0.0125

Data Pertumbuhan Laba

No	Perusahaan	TAHUN	Net Profit	Dnet Profit	Pertumbuhan Laba
29	pan brothers tex tbk	1998	24,488		
		1999	14,484	-10,004	-0.4085
		2000	14,978	494	0.0341
		2001	18,095	3,117	0.2081
		2002	16,136	-1,959	-0.1083
30	primarindo asia infrastructure tbk	1998	-17,721		
		1999	16,415	34,136	-1.9263
		2000	-33,718	-50,133	-3.0541
		2001	-31,808	1,910	-0.0566
		2002	-78,985	-47,177	1.4832
31	ricky putra globalindo tbk	1998	-46,237		
		1999	31,037	77,274	-1.6713
		2000	-35,822	-66,859	-2.1542
		2001	-42,731	-6,909	0.1929
		2002	-4,781	37,950	-0.8881
32	sarasa nugraha tbk	1998	-85490		
		1999	517	86,007	-1.0060
		2000	17,122	16,605	32.1180
		2001	14,729	-2,393	-0.1398
		2002	-16,495	-31,224	-2.1199
33	sepatu bata tbk	1998	25,593		
		1999	50,397	24,804	0.9692
		2000	63,322	12,925	0.2565
		2001	63,468	146	0.0023
		2002	48,362	-15,106	-0.2380
34	surya intrindo makmur tbk	1998	2,686		
		1999	10,361	7,675	2.8574
		2000	15,750	5,389	0.5201
		2001	4,702	-11,048	-0.7015
		2002	-7,256	-11,958	-2.5432
35	argha karya prima industri tbk	1998	-92,380		
		1999	-13,280	79,100	-0.8562
		2000	-477,293	-464,013	34.9407
		2001	-181,538	295,755	-0.6197
		2002	403,193	584,731	-3.2210
36	asahimas flat glass co ltd tbk	1998	9,394		
		1999	27,415	18,021	1.9184
		2000	-23,473	-50,888	-1.8562
		2001	126,294	149,767	-6.3804
		2002	206,684	80,390	0.6365
37	asiplast industries tbk	1998	974		
		1999	10,706	9,732	9.9918
		2000	5,517	-5,189	-0.4847
		2001	4,961	-566	-0.1008
		2002	-11,729	-16,690	-3.3642
38	berlina co ltd tbk	1998	5,891		
		1999	21,017	15,126	2.5676
		2000	23,552	2,535	0.1206
		2001	36,265	12,713	0.5398
		2002	29,934	-6,331	-0.1746
39	dynaplast tbk	1998	11,463		
		1999	28,976	17,513	1.5278
		2000	29,449	473	0.0163
		2001	33,160	3,711	0.1260
		2002	46,883	13,723	0.4138
40	lgar jaya tbk	1998	13,981		
		1999	28,857	14,876	1.0640
		2000	21,039	-7,818	-0.2709
		2001	8,030	-13,009	-0.6183
		2002	18,516	10,486	1.3059
41	langgeng makmur plastic industries tbk	1998	-64,118		
		1999	-29,563	34,555	-0.5389
		2000	-34,203	-4,640	0.1570
		2001	-7,000	27,203	-0.7953
		2002	-66,725	-59,725	8.5321
42	lapindo packaging tbk	1998	-2,414		
		1999	557	2,971	-1.2307
		2000	394	-163	-0.2926
		2001	1,136	742	1.8832
		2002	1,864	728	0.6408

Data Pertumbuhan Laba

No	Perusahaan	TAHUN	Net Profit	Dnet Profit	Pertumbuhan Laba
15	sierad produce tbk	1998	683,341		
		1999	120,777	804,118	-1.1767
		2000	-477,626	-598,403	-4.9546
		2001	-300,762	176,864	-0.3703
		2002	-74,369	226,393	-0.7527
16	SMART tbk	1998	40,195		
		1999	139,846	99,651	2.4792
		2000	-550,926	-690,772	-4.9395
		2001	-600,666	-49,740	0.0903
		2002	281,425	882,091	-1.4685
17	suba indah tbk	1998	-13,233		
		1999	-1,933	11,300	-0.8539
		2000	-3,933	-2,000	1.0347
		2001	3,969	7,902	-2.0092
		2002	-22,310	-26,279	-6.6211
18	tunas baru lampung tbk	1998	18,073		
		1999	71,235	53,162	2.9415
		2000	1,748	-69,487	-0.9755
		2001	-7,232	-8,980	-5.1373
		2002	41,606	48,838	-6.7530
19	ultra jaya tbk	1998	7,140		
		1999	12,104	4,964	0.6952
		2000	29,874	17,770	1.4681
		2001	30,396	522	0.0175
		2002	18,906	-11,490	-0.3780
20	APAC citra centrex tbk	1998	-42,053		
		1999	2,597	44,650	-1.0618
		2000	-226,332	-228,929	-88.1513
		2001	-240,967	-14,635	0.0647
		2002	-104,714	136,253	-0.5654
21	daeyu orchid indonesia tbk	1998	683		
		1999	1,110	427	0.6252
		2000	6,557	5,447	4.9072
		2001	2,763	-3,794	-0.5786
		2002	-1,050	-3,613	-1.3800
22	ever shine textile industry tbk	1998	18,293		
		1999	102,269	83,976	4.5906
		2000	4,103	-98,166	-0.9599
		2001	30,087	25,984	6.3329
		2002	1,492	-28,595	-0.9504
23	fortune mate indonesia tbk	1998	7,013		
		1999	12,924	5,911	0.8429
		2000	21,430	8,506	0.6582
		2001	7,355	-14,075	-0.6568
		2002	-10,558	-17,913	-2.4355
24	great river international tbk	1998	-59,222		
		1999	5,128	64,350	-1.0866
		2000	5,204	76	0.0148
		2001	-375,561	-380,765	-73.1678
		2002	925,226	1,300,787	-3.4636
25	hanson industri utama tbk	1998	-182,529		
		1999	-92,501	90,028	-0.4932
		2000	-208,313	-115,812	1.2520
		2001	-103,020	105,293	-0.5055
		2002	-77,840	25,180	-0.2444
26	indorama syntetics tbk	1998	49,409		
		1999	14,172	-35,237	-0.7132
		2000	192,984	178,812	12.6173
		2001	-366,392	-559,376	-2.8986
		2002	33,376	399,768	-1.0911
27	karwell indonesia tbk	1998	-118,986		
		1999	21,365	140,351	-1.1796
		2000	-25,330	-46,695	-2.1856
		2001	-66,239	-40,909	1.6150
		2002	-2,056	64,183	-0.9690
28	kasogi international tbk	1998	-242,548		
		1999	-188,594	53,954	-0.2224
		2000	-179,454	9,140	-0.0485
		2001	-115,314	64,140	-0.3574
		2002	-12,462	102,852	-0.8919

Data Pertumbuhan Laba

No	Perusahaan	TAHUN	Net Profit	Dnet Profit	Pertumbuhan Laba
1	ades alfindo putraseti tbk	1998	-86,414		
		1999	253	86,667	-1,0029
		2000	99,791	99,538	393,4308
		2001	-10,240	-110,031	-1,1026
		2002	7,392	17,632	-1,7219
2	aqua golden mississippi tbk	1998	19,021		
		1999	17,844	-1,177	-0,0619
		2000	38,465	20,621	1,1556
		2001	48,014	9,549	0,2483
		2002	66,110	18,096	0,3769
3	asia intiselera tbk	1998	-62,028		
		1999	-12,387	49,641	-0,8003
		2000	-101,149	-88,762	7,1657
		2001	-41,037	60,112	-0,5943
		2002	73,256	114,293	-2,7851
4	cahaya kalbar tbk	1998	-79,832		
		1999	21,454	101,286	-1,2687
		2000	-8,055	-29,509	-1,3755
		2001	-4,803	3,252	-0,4037
		2002	9,751	14,554	-3,0302
5	davomas abadi tbk	1998	-51,746		
		1999	-1,546	50,200	-0,9701
		2000	-148,264	-146,718	94,9017
		2001	6,148	154,412	-1,0415
		2002	22,117	15,969	2,5974
6	delta djakarta tbk	1998	16,303		
		1999	57,020	40,717	2,4975
		2000	34,396	-22,624	-0,3968
		2001	44,595	10,199	0,2965
		2002	44,839	244	0,0055
7	fastfood indonesia tbk	1998	-13,362		
		1999	12,243	25,605	-1,9163
		2000	26,128	13,885	1,1341
		2001	25,897	-231	-0,0088
		2002	37,650	11,753	0,4538
8	indofood sukses makmur tbk	1998	457,666		
		1999	1,395,399	937,733	2,0489
		2000	646,172	-749,227	-0,5369
		2001	746,330	100,158	0,1550
		2002	802,633	56,303	0,0754
9	mayora indah tbk	1998	29,565		
		1999	45,364	15,799	0,5344
		2000	-23,373	-68,737	1,5152
		2001	31,136	54,509	-2,3321
		2002	119,490	88,354	2,8377
10	multi bintang indonesia tbk	1998	17,529		
		1999	62,319	44,790	2,5552
		2000	93,723	31,404	0,5039
		2001	113,836	20,113	0,2146
		2002	85,050	-28,786	-0,2529
11	prasidha aneka niaga tbk	1998	-200,907		
		1999	-278,949	-78,042	0,3884
		2000	-542,272	-263,323	0,9440
		2001	-245,336	296,936	-0,5476
		2002	-387,538	-142,202	0,5796
12	sari husada tbk	1998	10,302		
		1999	86,816	76,514	7,4271
		2000	131,411	44,595	0,5137
		2001	224,766	93,355	0,7104
		2002	177,300	-47,466	-0,2112
13	sekar laut tbk	1998	-112,805		
		1999	-4,237	108,568	-0,9624
		2000	-134,336	-130,099	30,7055
		2001	-77,466	56,870	-0,4233
		2002	42,134	119,600	-1,5439
14	siantar top tbk	1998	21,801		
		1999	29,271	7,470	0,3426
		2000	35,358	6,087	0,2080
		2001	22,268	-13,090	-0,3702
		2002	30,265	7,997	0,3591

Data Rasio Keuangan

Lanjutan Lampiran 2

No	Tahun	CR	OR	CashToCL	RecTo	InvTo	CASHTO	TATO	DR	FIM	DER	BEP	NPM	ROA	ROE	PER	PBV	Dw. Yield	DPR	
73	Perusahaan prima alloy steel universal tbk	1999	0.806	0.617	0.006	0.978	2.469	0.011	0.534	0.921	12.636	11.636	0.751	0.013	0.007	0.069	14.910	1.320	2.500	37.27
		2000	0.841	0.660	0.011	0.088	0.529	0.211	0.045	0.932	14.654	13.654	0.717	0.236	0.011	0.157	5.970	0.940	0.000	0.00
		2001	0.806	0.627	0.009	0.912	2.401	0.017	0.340	0.948	19.340	18.340	0.517	0.005	0.002	0.036	20.790	0.760	0.000	0.00
		2002	2.396	1.596	0.018	1.764	3.075	0.007	0.635	0.834	6.037	5.037	0.575	0.119	0.075	0.456	0.780	0.360	0.000	0.00
		1999	2.724	1.348	0.119	5.400	3.068	0.019	1.183	0.263	1.357	0.357	0.514	0.112	0.133	0.180	7.240	1.310	3.600	19.95
74	selamat sempurna tbk	2000	3.330	1.950	0.418	4.692	3.465	0.063	0.949	0.450	1.819	0.819	0.479	0.117	0.111	0.203	8.800	1.780	5.080	25.08
		2001	4.329	2.815	0.684	4.576	4.273	0.076	0.997	0.416	1.712	0.712	0.477	0.097	0.098	0.165	8.560	1.410	7.060	42.78
		2002	5.366	3.586	1.668	6.681	4.600	0.156	1.034	0.404	1.677	0.677	0.518	0.067	0.069	0.116	9.360	1.080	11.190	96.86
		1999	1.644	1.427	0.486	6.435	20.762	0.098	2.008	0.422	1.729	0.729	0.665	0.035	0.070	0.121	13.600	1.650	2.240	30.47
		2000	1.412	1.244	0.084	4.176	25.119	0.018	2.578	0.646	2.825	1.825	0.791	0.046	0.119	0.335	16.530	5.540	4.890	80.82
75	tunas idean tbk	2001	1.195	0.979	0.051	4.883	18.439	0.012	2.112	0.674	3.069	2.069	0.582	0.034	0.071	0.219	3.950	0.870	4.890	19.32
		2002	1.394	1.153	0.063	5.642	20.258	0.015	2.200	0.621	2.641	1.641	0.571	0.030	0.066	0.175	5.410	0.940	5.610	30.36
		1999	0.599	0.433	0.152	6.718	5.076	0.132	0.864	0.895	7.840	7.017	0.448	0.119	0.103	0.808	8.340	0.640	0.000	0.00
		2000	2.019	1.274	0.317	4.766	3.928	0.083	0.943	0.896	9.580	8.580	0.496	0.001	0.001	0.011	107.160	1.150	0.000	0.00
		2002	1.142	0.768	0.149	5.071	5.090	0.062	1.092	0.874	7.932	6.932	0.523	0.034	0.037	0.292	2.340	0.660	0.000	0.00
77	bayer indonesia tbk	2000	0.772	0.545	0.095	5.810	5.871	0.060	1.129	0.328	5.553	1.821	0.547	0.044	0.048	0.274	1.570	0.430	0.000	0.00
		1999	1.414	0.995	0.200	5.855	5.472	0.049	2.264	0.556	2.254	1.254	0.787	0.061	0.139	0.313	10.56	3.31	1.43	20.37
		2000	1.459	0.727	0.058	6.180	3.666	0.015	2.033	0.556	2.252	1.252	0.785	0.067	0.136	0.307	2.80	1.35	0.00	13.83
		2001	1.462	0.846	0.008	4.766	4.023	0.002	1.809	0.618	2.617	1.617	0.810	0.017	0.031	0.082	2.14	1.03	2.94	49.89
		2002	2.181	1.793	0.648	4.437	7.603	0.160	1.679	0.482	1.926	0.926	0.904	0.140	0.235	0.452	1.31	0.75	16.34	5.49
78	dankos laboratories tbk	1999	2.081	1.510	0.690	5.383	3.721	0.168	0.935	0.707	3.414	2.414	0.473	0.134	0.126	0.429	16.410	7.040	0.080	1.26
		2000	2.298	1.735	0.726	5.070	3.949	0.161	1.104	0.667	3.001	2.001	0.584	0.086	0.095	0.284	10.780	3.060	3.640	39.21
		2001	2.658	2.020	0.826	5.970	5.117	0.139	1.343	0.646	2.822	1.822	0.601	0.077	0.104	0.293	6.960	2.040	4.350	30.26
		2002	2.490	1.924	0.697	6.886	5.713	0.111	1.612	0.580	2.380	1.380	0.638	0.087	0.141	0.335	3.830	1.290	5.000	19.17
		1999	1.045	0.585	0.162	9.748	2.649	0.071	1.039	0.455	1.836	0.836	0.476	0.012	0.013	0.023	234.590	5.490	0.000	0.00
79	danya-varia laboratoria tbk	2000	1.226	0.647	0.093	8.370	2.644	0.033	1.157	0.543	2.188	1.188	0.500	0.037	-0.043	-0.095	-18.240	1.730	0.000	0.00
		2001	0.963	0.514	0.090	8.198	2.983	0.036	1.346	0.570	2.326	1.326	0.524	-0.004	-0.005	-0.011	-132.900	1.490	0.000	0.00
		2002	2.201	1.724	0.637	7.269	7.259	0.094	1.700	0.297	1.422	0.422	0.553	0.119	0.203	0.289	4.050	1.130	0.000	0.00
		1999	1.761	1.377	0.815	3.758	2.287	0.497	0.806	0.491	1.965	0.965	0.865	0.298	0.241	0.473	0.000	0.000	0.000	0.00
		2000	1.762	1.114	0.370	3.999	1.387	0.184	0.917	0.456	1.839	0.839	0.804	0.224	0.205	0.377	3.260	1.230	0.060	0.18
80	indofarma tbk	2001	2.378	1.408	0.371	2.815	1.109	0.175	0.758	0.371	1.589	0.589	0.849	0.199	0.151	0.240	4.680	1.120	0.000	0.00
		2002	1.734	1.431	0.655	4.934	2.692	0.419	0.559	0.887	8.856	7.856	0.613	0.187	0.104	0.925	11.620	10.750	0.183	2.07
		1999	1.713	1.431	0.655	4.934	2.692	0.419	0.559	0.887	8.856	7.856	0.613	0.187	0.104	0.925	11.620	10.750	0.183	2.07
		2000	2.108	1.472	0.510	4.552	2.647	0.141	0.888	0.893	8.326	8.326	0.519	-0.016	-0.016	-0.150	-44.390	6.680	0.000	0.00
		2001	2.113	1.433	0.493	5.154	3.110	0.121	1.090	0.882	8.503	7.503	0.563	0.016	0.017	0.148	27.970	4.140	0.000	0.00
82	kirmia farma tbk	2002	1.177	0.885	0.378	5.862	3.643	0.167	1.271	0.757	4.114	3.114	0.662	0.104	0.132	0.545	4.180	2.280	0.000	0.00
		1999	1.320	0.726	0.417	10.605	2.666	0.176	1.504	0.645	2.817	1.817	0.837	0.093	0.140	0.393	0.000	0.000	0.000	0.00
		2000	1.531	0.940	0.423	11.528	3.910	0.096	1.482	0.348	1.533	0.533	0.596	0.023	0.034	0.052	29.020	1.520	10.340	300.07
		2001	1.962	1.358	0.887	10.321	3.931	0.252	1.224	0.391	1.642	0.642	0.682	0.071	0.087	0.142	11.990	1.700	0.050	0.60
		2002	1.967	1.242	0.469	8.596	4.789	0.096	1.482	0.348	1.533	0.533	0.596	0.023	0.034	0.052	29.020	1.520	10.340	300.07
83	merck indonesia tbk	1999	3.112	2.148	0.910	4.405	2.439	0.167	1.292	0.248	1.329	0.329	0.738	0.183	0.237	0.315	7.500	2.360	17.480	131.14
		2000	3.155	2.086	1.281	7.139	2.200	0.223	1.417	0.253	1.339	0.339	0.778	0.269	0.381	0.510	3.380	1.720	0.000	0.00
		2001	3.664	2.588	1.623	6.588	2.330	0.255	1.377	0.216	1.276	0.276	0.793	0.252	0.347	0.442	4.170	1.840	7.620	31.77
		2002	5.593	3.532	1.639	5.729	1.867	0.189	1.282	0.134	1.155	0.155	0.739	0.169	0.217	0.251	5.980	1.500	0.010	0.06
		1999	1.146	0.576	0.085	6.667	3.348	0.031	1.713	0.616	2.607	1.607	0.707	-0.079	-0.136	-0.354	-5.000	1.770	0.000	0.00
84	schering plough indonesia tbk	2000	0.985	0.544	0.015	104.098	3.441	0.006	1.734	0.300	3.698	2.698	0.719	-0.050	-0.086	-0.318	-9.780	3.110	0.000	0.00
		2001	0.700	0.374	0.026	6.159	3.875	0.015	1.631	0.932	14.706	13.706	0.652	-0.095	-0.155	-0.277	-9.330	2.150	0.000	0.00
		2002	0.619	0.378	0.051	6.542	4.996	0.027	1.795	0.948	19.221	18.221	0.586	-0.010	-0.017	-0.329	-27.490	9.040	0.000	0.00
		1999	2.013	1.500	0.735	8.989	2.848	0.164	1.229	0.336	1.506	0.506	0.550	0.067	0.083	0.124	29.710	3.690	0.850	25.18
		2000	3.290	2.519	1.743	9.466	3.415	0.349	1.016	0.263	1.356	0.356	0.670	0.240	0.243	0.330	3.980	1.310	4.880	19.41
85	tempo scan pasific tbk	2000	3.743	2.899	2.327	11.979	3.624	0.412	0.236	1.310	0.310	0.711	0.178	0.190	0.249	4.620	1.150	12.310	56.80	
		2002	4.010	3.213	2.597	13.632	4.448	0.408	1.079	0.216	1.276	0.276	0.680	0.161	0.174	0.222	5.870	1.300	9.700	56.91

Data Rasio Keuangan

No	Tahun	Perusahaan	CR	QR	CashToCL	RecTo	InvTo	CASHTO	TATO	DR	FLM	DER	BEP	NPM	ROA	ROE	PER	PBV	Div. Yield	DPR	
61	1999	astra international tbk	1.070	0.835	0.551	13.924	6.398	0.285	0.645	0.909	11.038	10.038	0.357	0.104	0.087	0.739	6.230	4.610	0.000	0.00	
	2000		0.884	0.583	0.430	16.470	7.663	0.153	1.057	0.957	15.756	15.084	0.332	-0.008	-0.009	-0.140	-21.000	2.940	0.000	0.00	
	2001		0.982	0.680	0.343	17.880	8.077	0.118	1.134	0.903	10.353	9.353	0.383	0.028	0.032	0.329	5.860	1.930	0.000	0.00	
	2002		1.311	0.987	0.599	20.337	9.287	0.156	1.172	0.782	4.029	3.029	0.400	0.119	0.139	0.560	2.260	3.590	0.000	0.00	
	1999		0.923	0.725	0.417	9.663	7.822	0.215	1.106	0.682	3.141	2.141	0.526	0.103	0.114	0.357	10.060	3.590	0.000	0.00	
62	2000	astra otopart tbk	1.417	1.051	0.433	6.981	6.321	0.146	1.189	0.681	3.134	2.134	0.568	0.051	0.080	0.189	12.870	2.430	0.000	0.00	
	2001		1.587	1.424	0.704	7.202	6.341	0.163	1.127	0.428	1.749	0.749	0.515	0.125	0.141	0.246	4.080	1.110	0.050	0.19	
	2002		1.973	1.424	0.704	7.202	6.341	0.163	1.127	0.428	1.749	0.749	0.515	0.125	0.141	0.246	4.080	1.110	0.050	0.19	
	1999		0.547	0.396	0.158	3.878	3.567	0.205	0.530	0.744	3.907	2.907	0.376	0.254	0.135	0.526	3.560	1.870	0.000	0.00	
	2000		2.099	1.173	0.337	5.127	2.172	0.109	0.635	0.793	4.828	3.828	0.429	0.018	0.011	0.055	13.530	0.740	0.000	0.00	
63	2001	branta mulia tbk	2.907	1.942	0.694	5.247	3.620	0.141	0.738	0.737	3.798	2.798	0.435	0.053	0.039	0.149	3.320	0.500	0.000	0.00	
	2002		2.352	1.568	0.483	5.597	4.231	0.113	0.795	0.656	2.909	1.909	0.437	0.084	0.067	0.194	1.850	0.360	0.000	0.00	
	1999		0.656	0.474	0.223	10.633	3.229	0.276	0.324	0.916	11.936	10.936	0.284	-0.122	-0.040	-0.473	-6.360	3.010	0.000	0.00	
	2000		0.326	0.243	0.061	7.063	3.554	0.161	0.340	1.143	-7.000	-4.480	-5.460	0.298	-0.215	-0.082	-0.364	-0.350	0.000	0.00	
	2001		0.316	0.233	0.036	7.232	3.936	0.088	0.379	1.224	-4.480	-4.480	-5.460	0.298	-0.215	-0.082	-0.364	-0.350	0.000	0.00	
64	2002	gajah tunggai tbk	0.607	0.394	0.056	6.622	4.651	0.048	0.447	0.963	27.150	26.150	0.232	0.685	0.306	8.509	0.190	1.590	0.000	0.00	
	1999		2.652	1.730	0.379	5.609	5.654	0.052	1.538	0.303	1.435	0.435	0.556	0.165	0.253	0.363	4.650	1.690	7.000	32.56	
	2000		2.227	1.270	0.235	21.257	4.666	0.045	1.270	0.362	1.617	0.617	0.538	0.072	0.092	0.148	6.610	0.980	1.670	11.01	
	2001		2.453	1.470	0.321	33.990	7.214	0.042	1.520	0.337	1.508	0.508	0.484	0.020	0.030	0.045	17.130	0.780	2.450	41.96	
	2002		2.285	1.317	0.264	27.716	6.088	0.040	1.463	0.299	1.425	0.425	0.427	0.502	0.029	0.043	0.061	10.840	0.660	3.450	37.38
65	1999	GT petrochem industries tbk	0.579	0.328	0.142	8.208	3.020	0.165	0.305	0.993	133.790	132.790	0.204	-0.351	-0.107	-14.398	-2.240	32.100	0.000	0.00	
	2000		0.307	0.194	0.065	7.169	3.464	0.144	0.386	1.302	-3.355	-3.355	-4.368	0.285	-0.785	-0.303	-0.180	-0.180	0.000	0.00	
	2001		0.290	0.169	0.048	5.387	3.875	0.091	0.452	1.437	2.287	2.287	0.251	-0.270	-0.122	-0.278	-0.300	-0.080	0.000	0.00	
	2002		0.396	0.230	0.038	5.308	4.339	0.052	0.442	1.175	5.716	6.716	0.237	0.708	0.313	1.791	0.210	0.210	0.000	0.00	
	1999		2.113	1.195	0.679	5.829	1.574	0.283	0.951	0.774	4.421	3.421	0.837	0.217	0.207	0.913	3.040	2.780	0.000	0.00	
66	2000	hexindo adipertaka tbk	2.853	1.670	0.491	2.982	1.728	0.153	0.866	0.716	3.526	2.526	0.857	0.079	0.077	0.270	2.520	0.680	0.040	11.00	
	2001		1.171	0.733	0.057	2.228	2.102	0.044	0.859	0.730	3.700	2.700	0.773	0.088	0.076	0.281	2.720	0.760	0.260	0.70	
	2002		1.476	0.870	0.106	2.452	2.014	0.064	0.795	0.722	3.594	2.594	0.714	0.077	0.061	0.219	1.700	0.370	0.200	0.34	
	1999		0.894	0.637	0.319	5.264	3.181	0.304	0.683	1.066	-15.080	-16.080	0.583	0.050	0.034	-0.512	15.150	-7.760	0.000	0.00	
	2000		0.896	0.555	0.134	6.614	4.963	0.069	1.427	1.140	-7.128	-8.128	0.657	-0.060	-0.086	0.611	-4.360	-2.670	0.000	0.00	
67	2001	indomobil sukses internasional tbk	0.604	0.433	0.163	57.001	21.491	0.039	2.900	1.247	-4.045	-5.045	0.417	-0.007	-0.020	0.081	-12.600	-1.020	0.000	0.00	
	2002		0.974	0.772	0.271	56.002	28.971	0.038	3.993	0.870	7.665	6.665	0.548	0.106	0.422	3.232	0.570	2.160	0.000	0.00	
	1999		0.975	0.490	0.168	2.931	0.928	0.275	0.360	0.790	4.761	3.761	0.575	0.078	0.028	0.134	9.020	1.210	1.720	15.56	
	2000		1.700	0.813	0.196	4.474	1.447	0.113	0.599	0.874	7.965	6.965	0.589	-0.094	-0.056	-0.447	-1.790	0.800	0.000	0.00	
	2001		1.703	0.891	0.184	4.866	1.786	0.096	0.691	0.865	7.402	6.402	0.613	0.033	0.023	0.169	2.220	0.370	0.000	0.00	
68	2002	intraco penta tbk	3.350	1.808	0.193	4.006	2.269	0.045	0.756	0.758	4.129	3.129	0.587	0.145	0.109	0.452	0.790	0.360	4.000	3.00	
	1999		3.389	2.027	0.241	2.234	1.412	0.093	0.647	0.748	3.962	2.962	0.843	0.171	0.111	0.438	3.150	1.380	0.000	0.00	
	2000		3.426	1.797	0.047	1.792	1.006	0.018	0.615	0.807	5.187	4.187	0.820	0.018	0.011	0.056	10.550	0.590	2.840	30.00	
	2001		2.208	1.057	0.018	2.167	1.329	0.009	0.766	0.841	6.286	5.286	0.833	0.028	0.021	0.134	2.860	0.380	3.200	9.14	
	2002		2.225	1.056	0.019	2.092	1.357	0.009	0.745	0.809	5.248	4.248	0.818	0.031	0.023	0.161	2.660	0.330	0.000	0.00	
69	1999	multi prima sejahtera tbk	0.816	0.795	0.215	43.310	7.543	0.194	0.664	0.603	2.517	1.517	1.517	0.491	0.096	0.064	0.161	4.480	0.720	0.860	3.84
	2000		0.737	0.533	0.344	13.066	2.907	0.469	0.474	0.648	2.842	1.842	0.476	-0.747	-0.354	-1.007	-1.100	1.110	0.000	0.00	
	2001		0.704	0.411	0.208	11.888	2.120	0.290	0.575	0.800	4.994	3.994	0.563	-0.356	-0.205	-1.023	-1.170	1.200	0.000	0.00	
	2002		0.921	0.611	0.485	8.289	2.083	0.644	0.279	0.371	1.589	0.589	0.342	0.579	0.161	0.257	0.630	0.160	0.000	0.00	
	1999		0.614	0.394	0.008	3.358	3.702	0.007	0.869	0.795	4.872	3.872	0.484	0.074	0.065	0.315	6.480	2.040	0.540	3.50	
70	2000	nipress tbk	1.700	0.998	0.098	4.540	3.925	0.029	0.898	0.925	13.307	12.307	0.452	-0.121	-0.108	-1.441	-2.640	3.810	0.000	0.00	
	2001		1.485	0.846	0.075	5.130	4.024	0.023	0.914	0.962	28.646	25.646	0.426	-0.032	-0.029	-0.780	-3.260	2.540	0.000	0.00	
	2002		1.387	0.767	0.088	6.088	4.730	0.025	1.172	0.886	8.676	7.684	0.463	0.065	0.076	2.010	1.320	0.000	0.00		

Data Rasio Keuangan

No	Perusahaan	Tahun	CR	QR	CashToCL	RecTo	InvTo	CASHTO	TATO	DR	FLM	DER	BEP	NPM	ROA	ROE	PER	PBV	Div. Yield	DPR
49	alumindo light metal industries tbk	1999	2.638	0.987	0.241	21.798	2.733	0.042	0.994	0.596	2.623	1.564	0.460	0.101	0.100	0.263	4.540	1.130	0.000	0.00
		2000	1.824	0.707	0.089	14.630	3.184	0.021	1.133	0.671	3.035	2.035	0.492	0.003	0.003	0.009	92.860	0.820	0.000	0.00
		2001	1.314	0.374	0.114	26.952	2.859	0.036	1.096	0.656	2.906	1.906	0.457	0.029	0.032	0.093	4.540	0.420	0.000	0.00
		2002	1.005	0.357	0.052	16.217	3.447	0.022	0.987	0.645	2.817	1.817	0.416	-0.015	-0.015	-0.042	-4.140	17.000	0.000	0.00
50	betonjaya manunggal tbk	1999	0.278	0.117	0.012	12.785	7.550	0.009	1.052	0.805	5.137	4.137	0.223	0.006	0.008	0.042	0.000	0.000	0.000	0.00
		2000	0.317	0.120	0.049	17.199	6.028	0.041	0.647	0.545	2.197	1.197	0.171	0.021	0.014	0.030	12.330	0.370	0.000	0.00
		2001	1.022	0.753	0.718	47.990	4.613	0.510	0.555	0.397	1.658	0.658	0.403	0.068	0.038	0.062	17.490	1.090	0.020	0.36
		2002	2.008	0.969	0.448	13.189	6.051	0.071	0.814	0.133	1.153	1.153	0.260	0.116	0.094	0.109	11.370	1.240	0.000	0.00
51	citra tubindo tbk	1999	5.508	0.020	3.369	9.399	0.480	0.901	0.285	0.117	1.120	0.120	0.412	0.147	0.042	0.047	183.690	8.600	3.180	583.40
		2000	5.508	4.471	2.876	3.282	2.961	0.724	0.326	0.111	1.125	0.125	0.453	0.015	0.005	0.006	1112.660	6.190	0.000	0.00
		2001	5.224	4.183	3.003	7.365	5.150	0.470	0.397	0.086	1.636	0.141	0.324	0.040	0.016	0.026	193.600	4.970	2.760	534.86
		2002	3.148	2.348	1.525	4.401	3.710	0.447	0.563	0.197	1.246	0.246	0.520	0.034	0.019	0.024	214.030	5.070	3.360	718.35
52	indal aluminium industri tbk	1999	0.869	0.471	0.254	10.501	4.097	0.122	0.925	0.505	2.019	1.019	0.386	0.072	0.067	0.134	6.560	0.880	5.600	36.72
		2000	0.929	0.271	0.038	10.894	2.283	0.020	0.954	0.627	2.678	1.678	0.475	-0.040	-0.038	-0.103	-4.780	0.490	0.000	0.00
		2001	0.846	0.355	0.033	12.354	5.461	0.010	1.306	0.632	2.719	1.719	0.347	0.004	0.005	0.014	32.730	0.450	0.000	0.00
		2002	1.742	0.604	0.077	8.380	3.238	0.019	0.956	0.672	3.048	2.048	0.403	0.001	0.001	0.004	58.820	0.220	0.000	0.00
53	jakarta kyoel steel works ltd tbk	1999	0.193	0.165	0.001	0.595	3.404	0.013	1.135	1.476	-2.099	-3.099	0.269	-0.885	-0.120	0.251	-0.910	-0.230	0.000	0.00
		2000	0.130	0.123	0.001	0.206	4.409	0.021	0.056	2.255	-0.797	-1.797	0.291	-11.999	-0.675	0.537	-0.050	-0.030	0.000	0.00
		2001	0.193	0.164	0.001	0.234	1.470	0.015	0.065	1.830	-1.205	-2.205	0.336	-1.686	-0.110	0.133	-0.070	-0.010	0.000	0.00
		2002	0.288	0.266	0.001	0.843	0.678	0.003	0.354	1.685	-1.459	-2.459	0.475	0.105	0.037	-0.054	0.110	-0.010	0.000	0.00
54	jaya pari steel tbk	1999	0.960	0.871	0.018	4.533	12.648	0.014	0.731	0.579	2.374	1.374	0.554	0.014	0.010	0.024	29.180	0.700	0.000	0.00
		2000	0.551	0.181	0.038	208.424	12.617	0.002	1.892	0.376	1.602	0.602	0.207	-0.707	-0.132	-0.211	-2.550	0.540	0.000	0.00
		2001	0.918	0.475	0.005	7.648	4.375	0.002	1.066	0.448	1.822	0.816	0.395	0.105	0.105	0.192	1.360	0.260	0.000	0.00
		2002	1.539	0.937	0.020	7.026	6.790	0.004	1.986	0.469	1.885	0.885	0.648	0.063	0.124	0.235	1.230	0.290	0.000	0.00
55	lion mesh prima tbk	1999	0.690	0.484	0.352	14.287	4.741	0.310	0.812	0.718	3.542	2.542	0.494	0.034	0.027	0.097	11.260	1.090	0.000	0.00
		2000	0.876	0.634	0.442	10.332	6.102	0.254	1.133	0.769	4.331	3.332	0.569	-0.020	-0.023	-0.100	-6.290	0.630	0.000	0.00
		2001	0.837	0.542	0.225	7.909	5.338	0.124	1.288	0.751	4.019	3.019	0.597	0.019	0.024	0.098	8.510	0.840	0.000	0.00
		2002	0.911	0.572	0.047	7.452	7.029	0.018	1.649	0.677	3.099	2.099	0.585	0.026	0.042	0.131	2.270	0.300	7.140	16.22
56	lion metal works tbk	1999	3.234	2.384	1.871	4.706	1.164	0.917	0.444	0.217	1.278	0.278	0.703	0.185	0.082	0.105	6.120	0.640	3.110	19.04
		2000	3.656	2.867	2.252	5.117	2.022	0.797	0.564	0.200	1.250	0.250	0.731	0.208	0.117	0.146	2.440	0.360	32.700	79.67
		2001	5.096	3.195	2.276	8.252	1.548	0.489	0.668	0.143	1.167	0.167	0.730	0.175	0.117	0.137	2.660	0.360	10.000	26.61
		2002	5.975	3.755	2.458	8.113	1.606	0.403	0.772	0.127	1.146	0.146	0.756	0.142	0.110	0.126	0.280	0.410	9.330	30.66
57	pelangi indah camindo tbk	1999	0.140	0.078	0.008	9.379	4.183	0.026	0.492	1.607	1.648	2.648	0.224	0.152	0.075	0.123	1.780	-0.220	0.000	0.00
		2000	0.148	0.068	0.016	8.913	3.322	0.049	0.486	1.584	1.712	2.712	0.221	0.113	0.055	0.084	2.340	-0.220	0.000	0.00
		2001	0.151	0.043	0.005	10.965	2.863	0.015	0.530	1.640	1.563	2.563	0.232	0.006	0.004	0.007	11.120	-0.080	0.000	0.00
		2002	0.199	0.068	0.008	7.580	2.863	0.021	0.581	15.679	0.176	2.753	2.957	0.173	1.005	0.176	0.300	-0.050	0.000	0.00
58	tembaga mulia semanan tbk	1999	1.028	0.790	0.346	4.020	5.745	0.231	1.257	8.388	6.205	52.045	0.862	0.009	0.012	0.071	12.560	0.900	2.150	27.06
		2000	0.979	0.790	0.260	3.293	8.201	0.148	1.488	0.858	7.044	6.044	0.840	0.009	0.014	0.098	6.990	0.690	2.980	20.72
		2001	0.956	0.722	0.238	41.690	7.717	0.121	1.678	0.856	6.924	5.924	0.818	0.019	0.031	0.217	3.790	0.820	2.500	9.47
		2002	0.922	0.614	0.204	5.109	6.459	0.098	1.674	0.809	5.234	4.234	0.744	0.022	0.037	0.184	1.570	0.300	5.560	8.72
59	tira austenite tbk	1999	0.901	0.415	0.054	5.034	1.636	0.036	0.757	0.824	5.690	4.690	0.483	0.047	0.035	0.201	7.400	1.490	0.000	0.00
		2000	1.857	1.104	0.523	4.859	1.832	0.219	0.818	0.473	1.896	0.896	0.637	-0.184	-0.134	-0.254	-6.960	1.770	0.000	0.00
		2001	1.887	0.854	0.095	5.502	1.633	0.033	0.967	0.440	1.787	0.787	0.627	0.066	0.064	0.115	15.060	1.680	0.000	0.00
		2002	0.622	0.332	0.095	4.818	1.825	0.038	0.486	0.681	3.140	2.140	0.334	0.037	0.018	0.056	31.520	1.760	0.000	0.00
60	andhi chandra automotive products tbk	1999	3.135	1.182	0.100	7.163	2.652	0.014	1.410	0.479	1.918	0.918	0.621	0.127	0.179	0.342	0.000	0.000	0.000	0.00
		2000	4.733	2.556	0.677	4.958	2.978	0.082	0.909	0.136	1.160	0.160	0.524	0.101	0.092	0.106	67.680	7.200	1.700	115.20
		2001	7.532	5.411	2.801	6.248	5.645	0.190	1.120	0.113	1.128	0.128	0.572	0.102	0.114	0.128	96.610	12.390	0.960	92.75
		2002	6.243	4.528	2.692	7.677	4.764	0.274	0.927	0.140	1.163	0.163	0.589	0.090	0.084	0.098	31.180	3.040	2.780	86.60

Data Rasio Keuangan

No	Perusahaan	Tahun	CR	QR	CashToCL	RecTo	InvTo	CASHTO	TATO	DR	FLM	DER	BEP	NPM	ROA	ROE	PER	PBV	Div. Yield	DPR
37	asiplast industries tbk	1999	0.840	0.391	0.012	8.114	4.666	0.005	0.441	0.354	1.315	0.465	0.139	0.139	0.061	0.080	56.040	5.300	0.000	0.00
		2000	1.264	0.572	0.085	10.414	5.675	0.018	0.693	0.305	1.440	0.440	0.169	0.040	0.025	0.036	16.500	0.590	0.000	0.00
		2001	1.074	0.253	0.020	17.237	4.287	0.005	0.672	0.323	1.478	0.478	0.190	0.032	0.021	0.031	11.790	0.370	0.000	0.00
		2002	0.691	0.262	0.011	10.842	6.138	0.004	0.630	0.482	1.929	0.929	0.163	-0.066	-0.042	-0.080	-2.770	0.220	0.000	0.00
38	berlina co.ltd tbk	1999	2.376	1.619	1.063	17.293	3.635	0.165	1.411	0.318	1.467	0.467	0.520	0.126	0.178	0.262	4.430	1.160	7.410	32.83
		2000	2.186	1.619	1.255	10.716	4.158	0.356	0.954	0.409	1.691	0.991	0.593	0.150	0.143	0.242	3.000	0.730	14.630	43.95
		2001	1.759	1.374	0.796	8.099	5.450	0.248	1.000	0.467	1.876	0.876	0.547	0.171	0.171	0.321	1.860	0.600	0.000	0.00
		2002	2.192	1.630	1.012	9.649	5.186	0.232	0.871	0.449	1.816	0.816	0.437	0.133	0.115	0.210	3.170	0.660	0.000	0.00
39	dynaplast tbk	1999	1.896	1.607	0.865	5.586	7.867	0.277	0.648	0.340	1.514	0.514	0.393	0.147	0.095	0.144	15.000	2.170	3.450	51.72
		2000	1.236	0.916	0.362	5.012	6.145	0.131	0.764	0.458	1.846	0.846	0.340	0.096	0.073	0.135	7.630	1.030	0.000	0.00
		2001	0.801	0.598	0.135	6.095	8.085	0.060	0.798	0.477	1.914	0.914	0.284	0.086	0.069	0.132	4.430	0.580	10.200	45.19
		2002	1.196	0.916	0.216	6.856	8.686	0.062	0.847	0.395	1.653	0.653	0.292	0.105	0.089	0.147	5.490	0.810	7.060	38.73
40	lgar.jaya tbk	1999	2.066	1.332	0.778	1.321	4.216	0.187	1.340	0.542	1.825	0.825	0.667	0.126	0.169	0.308	1.090	0.340	27.080	29.56
		2000	1.524	0.873	0.186	5.813	3.757	0.059	1.266	0.457	2.207	1.207	0.618	0.073	0.092	0.203	4.990	1.010	8.000	39.93
		2001	0.356	-0.148	0.130	5.608	5.176	0.043	1.315	0.581	2.385	1.385	0.154	0.024	0.032	0.076	8.500	0.650	3.060	26.15
		2002	1.677	0.968	0.131	6.629	5.527	0.026	1.644	0.487	1.948	0.948	0.557	0.047	0.078	0.152	4.820	0.730	3.530	17.01
41	langgeng makmur plastic industries tbk	1999	0.208	0.039	0.009	18.506	1.612	0.026	0.311	0.969	32.227	31.226	0.195	-0.222	-0.069	-2.226	-3.460	7.700	0.000	0.00
		2000	1.619	0.422	0.218	17.145	1.774	0.077	0.368	0.933	14.903	13.903	0.210	-0.184	-0.068	-1.011	-1.590	1.600	0.000	0.00
		2001	0.239	0.069	0.019	15.493	2.267	0.040	0.405	0.865	7.420	6.420	0.206	-0.033	-0.013	-0.099	-4.950	0.490	0.000	0.00
		2002	0.305	0.083	0.030	11.274	1.863	0.060	0.444	0.090	9.545	8.545	0.272	-0.298	-0.132	-1.283	-0.230	0.290	0.000	0.00
42	lapindo packaging tbk	1999	0.315	0.184	0.030	11.464	9.232	0.020	2.304	1.543	-1.841	-2.841	0.486	0.050	0.116	-0.213	0.000	0.000	0.000	0.00
		2000	0.688	0.596	0.045	6.908	12.370	0.029	1.358	0.881	8.413	7.413	0.607	0.028	0.037	0.315	15.480	4.880	0.000	0.00
		2001	1.519	1.368	0.837	8.713	12.090	0.398	0.641	0.311	1.452	0.452	0.463	0.054	0.053	0.050	141.950	7.120	0.000	0.68
		2002	1.626	1.409	0.468	4.271	9.563	0.201	0.695	0.309	1.446	0.446	0.486	0.076	0.053	0.076	66.580	5.080	0.000	0.00
43	piaspack prima industri tbk	1999	1.548	0.624	0.086	14.560	7.913	0.011	2.113	0.851	6.755	5.745	0.418	0.037	0.078	0.529	0.000	0.000	0.000	0.00
		2000	0.821	0.390	0.148	10.034	6.749	0.044	0.822	0.294	1.416	0.416	0.202	0.036	0.031	0.044	42.840	1.900	0.000	0.00
		2001	1.622	0.342	0.162	50.820	5.849	0.019	1.323	0.240	1.316	0.316	0.257	0.042	0.055	0.073	9.020	0.660	0.020	0.19
		2002	2.375	1.867	0.887	10.527	7.034	0.228	0.860	0.551	2.229	1.229	0.536	0.021	0.018	0.041	9.840	0.400	0.000	0.00
44	sivani makmur tbk	1999	10.505	8.917	7.143	5.689	4.038	0.896	0.592	0.074	1.080	0.080	0.781	0.086	0.057	0.061	17.820	1.090	0.000	0.00
		2000	4.286	3.598	0.555	7.977	4.836	0.123	0.831	0.191	1.237	0.237	0.792	0.129	0.107	0.132	1.300	0.170	0.000	0.00
		2001	3.138	1.834	0.455	7.557	5.466	0.048	0.969	0.161	1.191	0.191	0.322	0.040	0.039	0.046	7.370	0.340	0.020	0.15
		2002	3.096	2.149	0.380	5.141	0.653	0.048	0.867	0.160	1.191	0.191	0.343	0.015	0.013	0.016	16.950	0.270	0.000	0.00
45	summiplast interbenua tbk	1999	0.793	0.547	0.108	5.383	6.818	0.049	0.954	0.517	20.837	10.781	0.344	0.100	0.095	1.988	1.210	0.240	0.000	0.00
		2000	1.407	1.151	0.372	3.778	6.356	0.174	0.833	0.457	1.842	0.842	0.548	0.088	0.073	0.135	55.830	7.520	3.500	195.39
		2001	0.786	0.702	0.303	5.547	17.834	0.162	0.726	0.446	1.806	0.806	0.306	0.059	0.043	0.078	19.340	1.500	0.000	0.00
		2002	0.946	0.765	0.274	5.947	13.435	0.105	0.750	0.322	1.475	0.475	0.273	-0.022	-0.016	-0.024	-60.240	1.460	0.000	0.00
46	trias sentosa tbk	1999	0.453	0.347	0.187	5.548	2.923	0.511	0.285	0.808	5.220	4.220	0.352	0.349	0.100	0.520	1.660	0.870	7.010	11.77
		2000	0.318	0.207	0.121	4.469	2.239	0.324	0.360	0.937	15.946	14.946	0.298	-0.285	-0.100	-1.588	-1.140	1.810	0.000	0.00
		2001	0.530	0.365	0.205	4.375	3.267	0.271	0.498	0.740	3.844	2.844	0.348	0.369	0.194	0.745	0.540	0.410	0.000	0.00
		2002	0.854	0.616	0.183	4.324	3.724	0.150	0.513	0.593	2.458	1.458	0.361	0.282	0.145	0.355	1.670	0.590	0.000	0.00
47	wahana jaya perkasa tbk	1999	1.616	1.490	0.002	1.049	9.191	0.002	1.08	0.772	4.383	3.383	0.119	-0.652	-0.071	-1.309	-3.870	1.200	0.000	0.00
		2000	0.496	0.476	0.003	0.749	14.906	0.008	0.104	0.826	5.755	4.755	0.154	-0.239	-0.025	-0.143	-4.030	0.580	0.000	0.00
		2001	0.159	0.136	0.004	2.172	12.695	0.016	0.105	0.939	18.289	15.289	0.062	-1.049	-0.111	-1.802	-0.730	1.320	0.000	0.00
		2002	0.279	0.169	0.011	6.572	8.120	0.014	0.129	0.619	2.677	1.677	0.047	-0.470	-0.061	-0.160	-0.860	0.400	0.000	0.00
48	ataekasa industriindo tbk	1999	0.186	0.137	0.102	46.127	19.026	0.103	1.509	1.565	1.770	-2.770	0.281	-0.005	-0.008	0.014	-16.780	-0.240	0.000	0.00
		2000	0.378	0.353	0.072	3.474	37.309	0.076	1.439	1.518	-1.931	-2.931	0.572	-0.148	-0.213	0.412	-0.210	-0.090	0.000	0.00
		2001	0.250	0.214	0.026	9.060	38.460	0.018	3.066	2.161	-0.861	-1.861	0.536	-0.106	-0.325	0.280	-0.070	-0.020	0.000	0.00
		2002	3.200	2.006	1.084	54.928	26.589	0.033	7.149	1.030	0.654	0.673	0.690	0.350	2.503	1.637	0.090	0.140	0.000	0.00

Data Rasio Keuangan

No	Tahun	CR	QR	CashToCL	RecTo	InvTo	CASHTO	TATO	DR	FLM	DER	BEP	NPM	ROA	ROE	PER	PBV	Div. Yield	DPR
25	1999	0.213	0.106	0.025	10.538	6.184	0.041	0.470	0.864	7.327	6.327	0.163	-0.263	-0.123	-0.905	-2.080	1.880	0.000	0.00
	2000	0.248	0.129	0.026	7.534	4.148	0.056	0.411	0.956	22.866	21.866	0.221	-0.681	-0.280	-6.394	-0.420	2.710	0.000	0.00
	2001	0.218	0.151	0.014	4.559	6.777	0.031	0.466	1.104	-9.594	-10.594	0.223	-0.327	-0.152	-1.462	-0.290	-0.420	0.000	0.00
	2002	0.559	0.305	0.028	8.030	6.135	0.020	0.376	0.469	2.644	1.241	0.149	-0.315	-0.119	-0.314	-3.340	0.750	0.000	0.00
	1999	1.288	0.941	0.416	13.359	4.160	0.209	0.491	0.589	2.441	1.436	0.318	0.007	0.003	0.008	260.880	2.190	0.060	16.05
26	2000	1.121	0.800	0.073	13.532	5.052	0.035	0.587	0.553	2.238	1.238	0.317	0.059	0.035	0.078	2.540	0.200	0.000	0.00
	2001	1.217	0.907	0.020	14.243	5.195	0.010	0.583	0.593	2.458	1.458	0.355	-0.110	-0.064	-0.158	2.370	0.120	0.000	0.00
	2002	1.392	1.056	0.036	10.973	5.619	0.016	0.586	0.583	2.396	1.398	0.374	0.012	0.007	0.017	8.820	0.150	0.000	0.00
	1999	0.927	0.570	0.218	10.539	5.068	0.099	1.355	0.667	3.005	2.005	0.628	0.027	0.037	0.111	21.980	2.450	0.000	68.70
	2000	0.912	0.617	0.199	6.866	5.137	0.108	1.260	0.763	4.357	3.324	0.565	-0.028	-0.035	-0.152	-13.910	2.120	0.000	0.00
27	2001	0.604	0.356	0.216	23.041	7.382	0.105	1.698	0.850	6.682	5.682	0.498	-0.078	-0.132	-0.885	-3.550	3.140	0.000	0.00
	2002	0.603	0.333	0.122	7.566	4.472	0.094	1.099	0.852	6.756	5.756	0.513	-0.004	-0.004	-0.028	-99.950	2.820	0.000	0.00
	1999	0.276	0.180	0.024	3.354	1.810	0.105	0.515	2.298	-0.770	-1.770	0.626	-1.353	-0.697	0.537	-0.370	-0.040	0.000	0.00
	2000	0.175	0.090	0.006	3.075	1.192	0.046	0.428	3.194	-0.456	-1.456	0.541	-1.733	-0.742	0.338	-0.070	-0.020	0.000	0.00
	2001	0.153	0.065	0.009	2.983	0.988	0.081	0.473	4.216	-0.311	-1.311	0.623	-1.213	-0.574	0.179	-0.080	-0.010	0.000	0.00
29	2002	0.131	0.042	0.005	3.299	1.010	0.047	0.552	5.143	-0.241	-1.241	0.653	-0.142	-0.078	0.019	-0.300	0.000	0.000	0.00
	1999	1.954	1.611	1.003	7.615	11.046	0.217	1.775	0.647	2.830	1.830	0.750	0.086	0.153	0.434	5.170	2.240	3.590	18.56
	2000	2.018	1.052	0.406	12.888	4.498	0.078	2.088	0.605	2.535	1.535	0.805	0.062	0.129	0.328	6.670	2.190	2.690	17.95
	2001	1.827	1.025	0.327	12.223	4.141	0.082	1.817	0.615	2.595	1.595	0.830	0.063	0.114	0.296	4.030	1.190	5.260	21.22
	2002	2.931	1.885	0.463	16.331	5.794	0.061	2.131	0.479	1.919	0.919	0.826	0.054	0.115	0.220	9.520	2.090	0.750	7.14
30	1999	0.659	0.301	0.079	28.361	6.182	0.031	2.068	0.898	9.763	8.763	0.528	0.044	0.090	0.860	8.120	7.150	0.000	0.00
	2000	0.587	0.248	0.037	22.561	7.011	0.014	2.223	1.074	-13.585	-14.585	0.487	-0.074	-0.165	-2.237	-3.830	-8.560	0.000	0.00
	2001	0.425	0.143	0.006	40.047	5.820	0.003	1.966	1.258	-3.878	-4.878	0.444	-0.089	-0.175	0.678	-4.060	-2.750	0.000	0.00
	2002	0.234	0.096	0.008	63.213	8.157	0.008	1.444	2.281	-0.781	-1.781	0.366	-0.557	-0.804	0.628	-1.280	-0.800	0.000	0.00
	1999	5.023	2.592	1.180	5.454	2.167	0.171	0.906	0.654	2.866	1.866	0.658	0.123	0.111	0.322	2.320	0.750	2.400	5.57
31	2000	3.386	1.805	0.719	5.046	1.839	0.196	0.793	0.832	5.935	4.935	0.732	-0.133	-0.105	-0.626	-2.730	1.710	0.000	0.00
	1999	1.952	0.877	0.302	5.397	2.217	0.115	0.935	0.951	20.218	19.218	0.692	-0.156	-0.146	-2.948	-1.150	3.380	0.000	0.00
	2000	0.920	0.439	0.186	5.297	2.319	0.154	0.901	0.963	26.847	25.847	0.683	-0.020	-0.018	-0.492	-2.410	1.980	0.000	0.00
	2001	0.336	0.163	0.017	7.979	4.482	0.018	1.717	1.875	-1.143	-2.143	0.630	0.002	0.004	-0.004	33.540	-0.140	0.000	0.00
	2000	3.737	2.036	0.148	6.755	5.164	0.014	1.928	0.544	2.194	1.194	0.661	0.051	0.097	0.214	118.850	25.420	0.000	0.00
32	2001	4.557	2.210	0.682	9.202	4.017	0.061	1.765	0.477	1.914	0.914	0.718	0.046	0.081	0.155	8.960	1.390	0.000	0.00
	2002	2.770	1.099	0.048	8.422	3.875	0.007	1.623	0.528	2.118	1.118	0.651	-0.061	-0.100	-0.211	-6.000	1.270	0.000	0.00
	1999	2.725	0.814	0.577	30.880	1.941	0.079	1.890	0.310	1.450	0.450	0.705	0.176	0.332	0.482	3.500	1.680	9.960	34.82
	2000	1.945	0.784	0.202	14.739	2.161	0.042	1.771	0.401	1.671	0.671	0.717	0.172	0.305	0.509	2.500	1.270	29.100	72.88
	2001	2.108	0.901	0.237	19.516	2.454	0.043	1.827	0.364	1.573	0.573	0.699	0.156	0.285	0.448	2.870	1.280	10.710	30.72
33	2002	2.627	1.063	0.132	23.146	2.690	0.017	1.957	0.290	1.409	0.409	0.671	0.118	0.230	0.324	4.030	1.310	7.670	30.91
	1999	2.873	1.303	0.081	6.756	2.766	0.015	1.155	0.271	1.373	0.373	0.627	0.076	0.088	0.120	6.250	0.750	0.000	0.00
	2000	1.931	0.826	0.101	4.067	1.746	0.044	0.735	0.377	1.604	0.604	0.618	0.103	0.076	0.121	142.850	17.340	2.670	380.95
	2001	1.878	0.914	0.148	4.364	2.323	0.061	0.831	0.527	2.113	1.113	0.639	0.022	0.018	0.038	136.240	5.310	0.000	0.00
	2002	1.245	0.530	0.062	3.504	1.758	0.049	0.590	0.503	2.013	1.013	0.580	-0.053	-0.031	-0.063	-68.900	4.350	0.000	0.00
35	1999	0.190	0.105	0.037	7.219	3.538	0.069	0.376	0.979	48.431	47.431	0.173	-0.023	-0.009	-0.415	-21.870	5.310	0.000	0.00
	2000	0.254	0.174	0.061	6.386	3.470	0.158	0.415	1.228	-4.380	-5.380	0.272	-0.642	-0.266	-1.167	-0.180	-0.220	0.000	0.00
	2001	0.317	0.249	0.106	7.464	4.493	0.231	0.524	1.321	-3.115	-4.115	0.361	-0.192	-0.101	0.314	-0.370	-0.120	0.000	0.00
	2002	0.400	0.296	0.037	6.793	4.092	0.062	0.584	1.126	-7.944	-8.944	0.397	0.439	0.257	-2.038	0.140	-0.280	0.000	0.00
	1999	1.312	0.756	0.428	7.098	2.345	0.241	0.468	0.738	4.172	3.077	0.347	0.035	0.016	0.068	18.210	1.130	1.390	25.33
36	2000	1.808	0.952	0.538	8.662	1.846	0.194	0.609	0.755	3.916	2.958	0.398	-0.023	-0.014	-0.054	-12.940	0.730	0.000	0.00
	2001	2.240	1.348	0.988	15.025	2.613	0.248	0.745	0.672	3.051	2.051	0.427	0.103	0.077	0.234	4.300	1.010	3.520	15.12
	2002	1.760	0.911	0.442	10.918	2.901	0.117	0.860	0.518	2.073	1.073	0.400	0.160	0.137	0.285	2.780	0.790	5.280	14.70

Data Rasio Keuangan

No	Perusahaan	Tahun	CR	QR	CashToCL	RecTo	InvTo	CASHTO	TATO	DR	FLM	DER	BEP	NPM	ROA	ROE	PER	PBV	Div. Yield	DPR
13	sekar laut tbk	1999	0.156	0.094	0.025	7.530	6.070	0.056	0.884	1.991	-1.009	-2.009	0.305	-0.027	-0.024	0.024	-9.810	-0.240	0.000	0.00
		2000	0.134	0.077	0.016	7.001	5.706	0.041	1.231	3.206	-0.453	-1.453	0.414	-0.774	-0.952	0.432	-0.310	-0.130	0.000	0.00
		2001	0.108	0.067	0.025	9.541	7.141	0.072	1.375	4.049	-0.328	-1.328	0.425	-0.442	-0.608	0.199	-0.390	-0.080	0.000	0.00
		2002	0.260	0.158	0.029	7.059	6.537	0.037	1.312	3.873	-0.348	-1.348	0.429	0.266	0.349	-0.122	0.720	-0.090	0.000	0.00
14	siantar top tbk	1999	3.298	2.456	1.278	6.844	6.851	0.172	1.023	0.209	1.264	0.264	0.453	0.124	0.127	0.160	12.820	2.050	2.780	35.70
		2000	1.419	0.754	0.224	8.528	5.144	0.051	1.277	0.363	1.570	0.570	0.415	0.081	0.104	0.163	53.720	8.760	0.000	0.00
		2001	1.163	0.751	0.121	8.481	7.556	0.032	1.283	0.408	1.690	0.690	0.397	0.043	0.055	0.093	15.880	1.480	0.000	0.00
		2002	1.279	0.618	0.074	9.362	4.575	0.020	1.334	0.428	1.747	0.747	0.461	0.048	0.084	0.112	11.250	1.260	0.000	0.00
15	sierad produce tbk	1999	0.266	0.177	0.030	3.150	3.783	0.078	0.513	1.333	-2.999	-3.999	0.353	0.157	0.081	-0.242	1.360	-0.330	0.000	0.00
		2000	0.179	0.104	0.011	5.291	3.916	0.033	0.652	1.976	-1.024	-2.024	0.354	-0.445	-0.290	0.297	-0.140	-0.040	0.000	0.00
		2001	2.119	1.047	0.121	6.375	4.722	0.022	0.995	0.971	33.913	32.913	0.380	-0.230	-0.229	-7.760	-0.850	6.580	0.000	0.00
		2002	3.394	1.840	0.224	10.502	5.850	0.022	1.145	0.935	15.370	14.370	0.384	-0.057	-0.065	-0.994	-1.950	1.940	0.000	0.00
16	SMART tbk	1999	0.914	0.673	0.088	26.448	10.680	0.029	1.065	0.829	5.862	4.862	0.318	0.047	0.050	0.296	7.120	2.100	0.510	3.60
		2000	0.376	0.204	0.079	17.592	6.886	0.058	0.816	1.003	-316.016	-317.016	0.168	-0.228	-0.141	44.415	-1.510	-67.120	0.000	0.00
		2001	0.315	0.192	0.029	15.119	6.359	0.030	0.589	1.154	-6.498	-7.497	0.192	-0.262	-0.154	1.002	-0.400	-0.400	0.000	0.00
		2002	0.611	0.377	0.089	12.490	7.355	0.043	0.862	1.094	-10.669	-11.669	0.255	0.091	0.079	-0.841	-0.620	-0.620	0.000	0.00
17	sube indah tbk	1999	0.795	0.653	0.175	2.619	6.293	0.140	0.943	0.870	7.709	6.709	0.599	-0.029	-0.027	-0.210	-20.380	4.280	0.000	0.00
		2000	0.945	0.871	0.272	2.620	13.848	0.195	0.158	0.429	1.752	0.752	0.106	-0.042	-0.007	-0.012	-32.950	0.380	0.000	0.00
		2001	1.300	1.119	0.133	4.990	12.132	0.045	0.188	0.291	1.409	0.409	0.082	0.029	0.005	0.008	16.330	0.120	0.000	0.00
		2002	0.561	0.391	0.069	8.505	4.059	0.071	0.127	0.433	1.763	0.763	0.073	-0.198	-0.025	-0.044	-2.900	0.130	0.000	0.00
18	tunas baru lampung tbk	1999	1.621	0.751	0.254	24.681	7.561	0.033	0.954	0.715	3.510	2.510	0.198	0.102	0.098	0.343	6.180	2.120	0.000	0.00
		2000	2.702	1.804	1.162	32.838	9.933	0.156	0.713	0.584	2.291	1.291	0.258	0.003	0.002	0.004	1440.990	6.170	0.080	116.84
		2001	0.849	0.546	0.233	18.484	11.108	0.061	0.657	0.571	2.332	1.332	0.145	-0.012	-0.008	-0.018	-68.050	1.230	0.000	0.00
		2002	1.025	0.759	0.075	5.363	9.960	0.023	0.613	0.531	2.130	1.130	0.194	0.066	0.041	0.087	5.550	0.480	0.000	0.00
19	ultra jaya tbk	1999	1.918	1.411	0.572	6.892	2.583	0.328	0.284	0.274	1.987	0.544	0.312	0.047	0.013	0.027	159.080	4.260	1.500	238.62
		2000	1.543	0.716	0.209	6.458	2.361	0.081	0.458	0.326	1.484	0.484	0.272	0.092	0.042	0.063	75.740	4.750	0.000	0.00
		2001	1.708	1.013	0.481	8.892	3.759	0.146	0.493	0.478	1.915	0.915	0.256	0.064	0.031	0.060	44.350	2.660	0.000	0.00
		2002	1.104	0.518	0.073	7.525	2.693	0.031	0.402	0.484	1.936	0.936	0.191	0.046	0.019	0.036	61.110	2.200	1.830	50.93
20	APAC citra centrarex tbk	1999	0.276	0.139	0.013	10.302	4.922	0.017	0.597	0.836	6.102	5.102	0.212	0.002	0.001	0.006	130.550	0.790	0.150	20.08
		2000	0.304	0.162	0.013	8.966	4.279	0.017	0.692	0.924	13.215	12.215	0.272	-0.115	-0.080	-1.051	-1.180	1.240	0.000	0.00
		2001	0.300	0.160	0.008	11.003	6.446	0.008	0.608	1.009	-110.757	-111.757	0.234	-0.111	-0.090	9.957	-0.440	-4.420	0.000	0.00
		2002	0.308	0.170	0.008	8.855	6.008	0.009	0.727	1.048	20.825	21.825	0.247	-0.054	-0.038	-0.811	-0.560	-0.460	0.000	0.00
21	daeyu orchid indonesia tbk	1999	2.539	2.410	1.414	8.851	50.510	0.169	2.446	0.293	1.414	0.414	0.742	0.025	0.061	0.086	0.000	0.000	0.000	0.00
		2000	2.805	2.752	1.253	6.558	92.383	0.179	2.083	0.298	1.424	0.424	0.833	0.112	0.234	0.333	3.060	1.020	0.000	0.00
		2001	3.807	3.647	1.845	6.923	56.902	0.165	2.262	0.202	1.254	0.254	0.769	0.031	0.070	0.087	7.450	0.850	0.000	0.00
		2002	2.398	2.103	0.827	5.735	16.028	0.154	1.758	0.362	1.568	0.568	0.784	-0.015	-0.026	-0.040	-17.630	0.710	0.000	0.00
22	ever shine textile industry tbk	1999	3.531	1.927	1.160	8.223	2.527	0.196	0.687	0.615	2.599	1.599	0.409	0.206	0.141	0.367	2.920	1.070	5.000	14.60
		2000	2.606	1.475	0.109	8.834	2.341	0.284	0.687	0.549	2.219	1.219	0.484	0.008	0.005	0.011	122.790	1.390	0.000	0.00
		2001	2.775	0.956	0.437	8.682	1.896	0.102	0.715	0.472	1.893	0.893	0.462	0.057	0.041	0.077	21.430	1.850	0.630	13.40
		2002	1.496	0.528	0.299	10.756	1.979	0.148	0.828	0.415	1.710	0.710	0.466	0.004	0.004	0.004	405.260	1.550	0.670	270.18
23	fortune mate indonesia tbk	1999	6.270	4.558	0.678	3.452	6.432	0.057	1.481	0.138	1.161	0.161	0.787	0.050	0.073	0.085	8.510	0.720	0.000	0.00
		2000	4.848	3.745	0.498	2.557	6.601	0.066	1.328	0.186	1.229	0.229	0.852	0.064	0.066	0.105	10.450	1.100	2.860	29.86
		2001	8.319	5.245	3.202	10.080	5.334	0.195	1.668	0.116	1.131	0.131	0.845	0.019	0.032	0.036	33.720	1.210	0.000	0.00
		2002	7.378	4.104	1.088	8.100	4.414	0.074	1.669	0.121	1.137	0.137	0.839	-0.029	-0.048	-0.054	-2.730	0.150	0.000	0.00
24	great river international tbk	1999	0.931	0.374	0.107	9.760	1.513	0.094	0.380	0.871	7.752	6.752	0.311	0.011	0.004	0.032	62.430	1.960	0.000	0.00
		2000	0.490	0.145	0.040	14.372	1.992	0.051	0.372	0.079	4.755	0.375	0.231	0.008	0.003	0.015	63.380	0.940	0.000	0.00
		2001	0.333	0.093	0.018	13.359	2.097	0.030	0.518	1.403	-2.483	-3.483	0.283	-0.581	-0.301	0.747	-0.570	-0.420	0.000	0.00
		2002	1.172	0.359	0.020	5.218	1.025	0.016	0.429	0.569	2.320	1.320	0.394	2.183	0.937	2.174	0.290	-0.500	0.000	0.00

Koefisien Korelasi

C Correlations

		TATO	NPM	ROA	ROE	BEP	DR	DER
P PERT.LAB	Pearson Correlation	0.039325686	0.363902811	0.284967247	0.273154145	0.011488802	-0.027339472	-0.064908869
	Sig. (2-tailed)	0.537623102	3.51553E-09	5.11791E-06	1.28194E-05	0.857138651	0.668325409	0.308632441
	N	248	248	248	248	248	248	248
C CR	Pearson Correlation	-0.033271227	-0.003867099	-0.007882083	0.003050851	-0.06265048	-0.05212921	-0.042043073
	Sig. (2-tailed)	0.602051129	0.95168439	0.901709595	0.961873851	0.325803402	0.41373408	0.509869113
	N	248	248	248	248	248	248	248
C QR	Pearson Correlation	-0.031382999	-0.001408088	-0.004943291	0.005216122	-0.058542295	-0.055523254	-0.04543156
	Sig. (2-tailed)	0.622829407	0.982398039	0.938262219	0.934862105	0.358590069	0.363953214	0.476334598
	N	248	248	248	248	248	248	248
C CASHTOCL	Pearson Correlation	-0.026922732	0.029046523	0.029425269	0.016917828	-0.020529614	-0.092246985	-0.071472974
	Sig. (2-tailed)	0.673087692	0.648958	0.64469213	0.790936107	0.747679016	0.147489016	0.262157724
	N	248	248	248	248	248	248	248
F RECTO	Pearson Correlation	0.415781047	-0.036138579	0.107252123	0.058705188	0.551788588	-0.019599227	-0.031151315
	Sig. (2-tailed)	8.71924E-12	0.571107762	0.091923034	0.357252043	3.67407E-21	0.758752694	0.625400003
	N	248	248	248	248	248	248	248
I INVTO	Pearson Correlation	0.328638026	-0.035102373	0.09696414	0.043428966	-0.002984692	-0.018392767	-0.059526833
	Sig. (2-tailed)	1.15468E-07	0.582203063	0.127791496	0.496006834	0.962700036	0.773185501	0.350550689
	N	248	248	248	248	248	248	248
C CASHTO	Pearson Correlation	0.076562215	-0.057585758	-0.038593793	-0.01423779	-0.080664436	0.013518984	-0.007834707
	Sig. (2-tailed)	0.22960544	0.366510223	0.54522513	0.823461186	0.205530594	0.832238654	0.902297433
	N	248	248	248	248	248	248	248
TATO	Pearson Correlation	1	0.043466018	0.552102305	0.141213553	0.519891696	-0.003078751	-0.126759982
	Sig. (2-tailed)		0.495638979	3.45385E-21	0.026165041	1.42295E-18	0.96152546	0.046131899
	N	248	248	248	248	248	248	248
I NPM	Pearson Correlation	0.043466018	1	0.619846247	0.466079127	0.147238714	-0.229824245	-0.204768041
	Sig. (2-tailed)	0.495638979		1.02625E-27	8.88165E-15	0.02035927	0.000262272	0.001183493
	N	248	248	248	248	248	248	248
I ROA	Pearson Correlation	0.552102305	0.619846247	1	0.319040019	0.25132774	-0.218625251	-0.15482903
	Sig. (2-tailed)	3.45385E-21	1.02625E-27		2.84178E-07	6.27171E-05	0.000525203	0.014660151
	N	248	248	248	248	248	248	248
I ROE	Pearson Correlation	0.141213553	0.466079127	0.319040019	1	0.159397251	-0.067570643	-0.648586984
	Sig. (2-tailed)	0.026165041	8.88165E-15	2.84178E-07		0.01195058	0.289172111	5.39558E-31
	N	248	248	248	248	248	248	248
BEP	Pearson Correlation	0.519891696	0.147238714	0.25132774	0.159397251	1	-0.146988002	-0.146484053
	Sig. (2-tailed)	1.42295E-18	0.02035927	6.27171E-05	0.01195058		0.020576468	0.021019133
	N	248	248	248	248	248	248	248
DR	Pearson Correlation	-0.003078751	-0.229824245	-0.218625251	-0.067570643	-0.146988002	1	0.385122022
	Sig. (2-tailed)	0.96152546	0.000262272	0.000525203	0.289172111	0.020576468		3.4274E-10
	N	248	248	248	248	248	248	248
DER	Pearson Correlation	-0.126759982	-0.204768041	-0.15482903	-0.648586984	-0.146484053	0.385122022	1
	Sig. (2-tailed)	0.046131899	0.001183493	0.014660151	5.39558E-31	0.021019133	3.4274E-10	
	N	248	248	248	248	248	248	248
FLM	Pearson Correlation	-0.130115383	-0.205327413	-0.154298512	-0.661782586	-0.120664776	0.158133029	0.955782104
	Sig. (2-tailed)	0.040616964	0.001146441	0.015007307	1.273E-32	0.057752779	0.012652318	9.2574E-133
	N	248	248	248	248	248	248	248
PER	Pearson Correlation	-0.119016507	-0.027024211	-0.046221498	0.005391486	-0.101946161	-0.073800446	-0.06693717
	Sig. (2-tailed)	0.061281071	0.671926835	0.468693226	0.932677283	0.109263085	0.2468972	0.293727229
	N	248	248	248	248	248	248	248
PBV	Pearson Correlation	0.008795799	-0.144121846	-0.103042728	-0.48150986	0.065285784	-0.005641294	0.518433321
	Sig. (2-tailed)	0.890383264	0.023205715	0.105483332	8.46341E-16	0.305825684	0.929565857	1.84125E-18
	N	248	248	248	248	248	248	248
DIVYIELD	Pearson Correlation	0.125235794	0.139394621	0.155825458	0.073123898	0.272750226	-0.124614122	-0.126085611
	Sig. (2-tailed)	0.048836743	0.028176153	0.014027096	0.251267926	1.32185E-05	0.04997734	0.047312773
	N	248	248	248	248	248	248	248
DPR	Pearson Correlation	-0.066961134	0.025550417	-0.001087339	0.020064733	-0.02204963	-0.12830234	-0.094403999
	Sig. (2-tailed)	0.293554051	0.688861213	0.986407154	0.753205828	0.729699211	0.043523597	0.138213249
	N	248	248	248	248	248	248	248

PT GOODYEAR INDONESIA Tbk
NERACA

31 Desember 2001 dan 2000

(Dalam Ribuan Rupiah, Kecuali Nilai Nominal Saham)

	2001	2000
AKTIVA		
AKTIVA LANCAR		
Kas dan setara kas	Rp 24.748.533	Rp 23.080.941
Piutang usaha		
- Pihak ketiga (setelah dikurangi penyisihan piutang ragu-ragu sebesar Rp 2.363.720 pada tahun 2001 dan Rp 1.763.465 pada tahun 2000)	17.760.821	24.257.793
- Pihak yang mempunyai hubungan istimewa	54.093.762	57.026.305
Piutang lain-lain	1.225.701	3.734.450
Persediaan – bersih	75.629.547	93.875.038
Pajak dan biaya dibayar di muka	15.413.343	16.456.809
Jumlah Aktiva Lancar	188.871.707	218.431.336
AKTIVA TIDAK LANCAR		
Piutang hubungan istimewa	304.011	-
Aktiva pajak tangguhan – bersih	9.687.598	8.831.002
Aktiva tetap		
Nilai tercatat	371.966.995	331.210.310
Akumulasi penyusutan	(190.805.930)	(162.605.292)
Bersih	181.161.065	168.605.018
Aktiva lain-lain		
Beban ditangguhkan – bersih	2.905.742	3.137.683
Pinjaman karyawan	3.292.967	3.240.767
Uang jaminan dan lain-lain	3.850.992	3.414.394
Sewa jangka panjang dibayar di muka		490.844
Jumlah Aktiva Tidak Lancar	201.202.375	187.719.708
JUMLAH AKTIVA	Rp 390.074.082	Rp 406.151.044

PT GOODYEAR INDONESIA Tbk
NERACA (Lanjutan)
31 Desember 2001 dan 2000
(Dalam Ribuan Rupiah, Kecuali Nilai Nominal Saham)

	2001	2000
KEWAJIBAN DAN EKUITAS		
KEWAJIBAN LANCAR		
Hutang usaha		
- Pihak ketiga	Rp 46.174.441	Rp 59.870.625
- Pihak yang mempunyai hubungan istimewa	2.904.716	13.451.040
Hutang lain-lain	10.387.881	11.123.482
Biaya masih harus dibayar	16.484.851	11.790.023
Hutang pajak	518.033	1.544.067
Kewajiban sewa guna usaha jatuh tempo dalam waktu satu tahun	541.889	315.041
Jumlah Kewajiban Lancar	77.011.811	98.094.278
KEWAJIBAN TIDAK LANCAR		
Hutang hubungan istimewa	41.763.966	41.752.707
Kewajiban sewa guna usaha - setelah dikurangi bagian yang jatuh tempo dalam waktu satu tahun	618.906	105.013
Kewajiban pensiun	11.954.292	15.099.540
Jumlah Kewajiban Tidak Lancar	54.337.164	56.957.260
Jumlah Kewajiban	131.348.975	155.051.538
EKUITAS		
Modal saham - nilai nominal Rp 1.000		
Modal dasar, ditempatkan dan disetor penuh - 41.000.000 saham	41.000.000	41.000.000
Saldo laba		
Belum ditentukan penggunaannya	217.475.107	209.899.506
Telah ditentukan penggunaannya	250.000	200.000
Jumlah Ekuitas	258.725.107	251.099.506
JUMLAH KEWAJIBAN DAN EKUITAS	Rp 390.074.082	Rp 406.151.044

PT GOODYEAR INDONESIA Tbk**LAPORAN LABA RUGI****Untuk Tahun Yang Berakhir Pada tanggal-tanggal 31 Desember 2001 dan 2000**

(Dalam Ribuan Rupiah, Kecuali Data Per Saham)

	2001	2000
PENJUALAN BERSIH	Rp 593.045.664	Rp 515.663.563
BEBAN POKOK PENJUALAN	545.630.195	438.025.766
LABA BRUTO	47.415.469	77.637.797
BEBAN USAHA		
Penjualan	22.888.429	18.474.493
Administrasi dan distribusi	17.337.966	14.600.901
Jumlah Beban Usaha	40.226.395	33.075.394
LABA USAHA	7.189.074	44.562.403
PENGHASILAN (BEBAN) LAIN-LAIN		
Laba selisih kurs – bersih	8.014.438	5.849.493
Laba penjualan aktiva tetap	1.451.716	2.450.549
Penghasilan bunga	509.088	1.636.370
Beban keuangan	(1.457.742)	(400.352)
Rupa-rupa – bersih	1.583.258	(806.746)
Penghasilan Lain-lain - Bersih	10.100.758	8.729.314
LABA SEBELUM TAKSIRAN PAJAK PENGHASILAN	17.289.832	53.291.717
TAKSIRAN PAJAK PENGHASILAN		
Pajak kini	6.420.827	16.048.783
Pajak tangguhan	(856.596)	19.426
Jumlah Taksiran Pajak Penghasilan	5.564.231	16.068.209
LABA BERSIH	Rp 11.725.601	Rp 37.223.508
LABA PER SAHAM		
Laba usaha per saham	Rp 175,34	Rp 1.086,89
Laba bersih per saham	Rp 285,99	Rp 907,89

Descriptive Statistics

	N	Minimum	Maximum	Mean	Std. Deviation
PERT.LAB	294	-141.697	393.431	2.49211	28.23588
CR	294	.104	333.894	3.44327	20.45420
QR	294	-.148	191.950	2.10230	11.67356
CASHTOCL	294	.002	41.534	.68739	2.54428
RECTO	294	.088	208.424	12.41379	22.91000
INVTO	294	.480	118.747	6.77165	11.55564
CASHTO	294	1.091	598.955	31.33495	59.68545
TATO	294	.045	7.149	1.05723	.71861
NPM	294	-1.049	2.183	5.17E-02	.21873
ROA	294	-1.096	2.503	7.00E-02	.20330
ROE	294	-14.299	8.309	3.79E-02	1.25547
BEP	294	-.039	1.731	.25837	.24448
DR	294	.074	15.679	.66719	1.05965
DER	294	.080	132.790	3.93450	9.85044
FLM	294	.176	133.790	4.81928	9.51079
PER	294	-132.900	1440.990	22.69112	114.60061
PBV	294	-.500	32.100	2.16810	3.45103
DIVYIELD	294	.000	32.700	1.92357	4.25796
DPR	294	.000	718.350	22.26507	73.56545
Valid N (listwise)	294				

Coefficients^a

Model		Unstandardized Coefficients		Standardized Coefficients	t	Sig.	Collinearity Statistics	
		B	Std. Error	Beta			Tolerance	VIF
1	(Constant)	.399	.252		1.587	.114		
	CR	-.161	.100	-2.854	-1.614	.108	.001	932.049
	QR	.345	.196	3.499	1.757	.080	.001	1182.421
	CASHTOCL	-.258	.145	-.568	-1.781	.076	.033	30.367
	RECTO	1.059E-02	.004	.180	2.384	.018	.590	1.695
	INVTO	-7.03E-04	.007	-.006	-.095	.924	.777	1.287
	CASHTO	5.045E-04	.002	.019	.317	.752	.892	1.122
	TATO	-.275	.209	-.144	-1.314	.190	.281	3.558
	NPM	1.361	.586	.220	2.322	.021	.373	2.682
	ROA	1.417	.685	.230	2.067	.040	.272	3.676
	ROE	.186	.091	.197	2.048	.042	.364	2.749
	BEP	-.586	.436	-.118	-1.344	.180	.439	2.279
	DR	.314	.241	.160	1.301	.194	.223	4.493
	DER	-5.34E-02	.046	-.451	-1.170	.243	.023	44.349
	FLM	5.947E-02	.043	.485	1.398	.163	.028	35.888
	PER	-1.36E-03	.001	-.135	-2.142	.033	.848	1.179
	PBV	2.392E-02	.030	.065	.810	.419	.521	1.918
	DIVYIELD	-1.86E-03	.019	-.007	-.100	.920	.768	1.302
	DPR	9.565E-04	.001	.061	.857	.392	.668	1.497

a. Dependent Variable: PERT.LAB

Perusahaan Sampel

No	Nama Perusahaan	No	Nama Perusaaan
1	Ades alfindo putraseti tbk	47	Plaspack prima industri tbk
2	Aqua golden mississippi tbk	48	Siwani makmur tbk
3	Asia intiselera tbk	49	Summiplast interbenua tbk
4	Cahaya kalbar tbk	50	Trias sentosa tbk
5	Davomas abadi tbk	51	Wahana jaya perkasa tbk
6	Delta djakarta tbk	52	Alakasa industrindo tbk
7	Fastfood indonesia tbk	53	Alummino light metal industries tbk
8	Indofood sukses makmur tbk	54	Betonjaya manunggal tbk
9	Mayora indah tbk	55	Citra tubindo tbk
10	Miwon indonesia tbk	56	Indal alumunium industri tbk
11	Multi bintang indonesia tbk	57	Jakarta kyoei steel works ltd tbk
12	Pioneerindo gourmet international tbk	58	Jaya pari steel tbk
13	Prasidha aneka niaga tbk	59	Lion mesh prima tbk
14	Sari husada tbk	60	Lion metal works tbk
15	Sekar laut tbk	61	Pelangi indah canindo tbk
16	Siantar top tbk	62	Tembaga mulia semanan tbk
17	Sierad produce tbk	63	Tira austenite tbk
18	Smart tbk	64	Andhi chandra automotive products tbk
19	Suba indah tbk	65	Astra international tbk
20	Tunas baru lampung tbk	66	Astra autopart tbk
21	Ultra jaya tbk	67	Branta mulia tbk
22	Apac citra centrex tbk	68	Gajah tunggal tbk
23	Daeyu orchid indonesia tbk	69	Goodyear indonesia tbk
24	Ever shine textile industry tbk	70	Gt petrochem industries tbk
25	Fortune mate indonesia tbk	71	Hexindo adiperkasa tbk
26	Great river international tbk	72	Indomobil sukses internasional tbk
27	Hanson industri utama tbk	73	Indospring tbk
28	Indorama syntetics tbk	74	Intraco penta tbk
29	Karwell indonesia tbk	75	Multi prima sejahtera tbk
30	Kasogi international tbk	76	Nipress tbk
31	Pan brothers tex tbk	77	Prima alloy steel universal tbk
32	Primarindo asia infrastructure tbk	78	Selamat sempurna tbk
33	Ricky putra globalindo tbk	79	Sugi samapersada tbk
34	Ryane adibusana tbk	80	Tunas ridean tbk
35	Sarasa nugraha tbk	81	United tractors tbk
36	Sepatu bata tbk	82	Bayer indonesia tbk
37	Surya intrindo makmur tbk	83	Bristol-myers squibb indonesia tbk
38	Argha karya prima industri tbk	84	Dankos laboratories tbk
39	Asahimas flat glass co ltd tbk	85	Darya-varia laboratoria tbk
40	Asiaplast industries tbk	86	Indofarma tbk
41	Berlina co ltd tbk	87	Kalbe farma tbk
42	Dynaplast tbk	88	Kimia farma tbk
43	Fatrapolindo nusa industri tbk	89	Merck indonesia tbk
44	Igar jaya tbk	90	Pyridam farma tbk
45	Langgeng makmur plastic industries tbk	91	Schering plough indonesia tbk
46	Lapindo packaging tbk	92	Tempo scan pasific tbk

Statistik D Durbin Watson sebelum data diurut.

Model Summary^p

Model	R	R Square	Adjusted R Square	Std. Error of the Estimate	Durbin-Watson
1	.351 ^a	.123	.066	27.29423	1.386

a. Predictors: (Constant), DPR, CR, ROA, RECTO, CASHTO, INVTO, DR, FLM, PER, DIVYIELD, PBV, BEP, NPM, ROE, TATO, CASHTOCLDER, QR

b. Dependent Variable: PERT.LAB

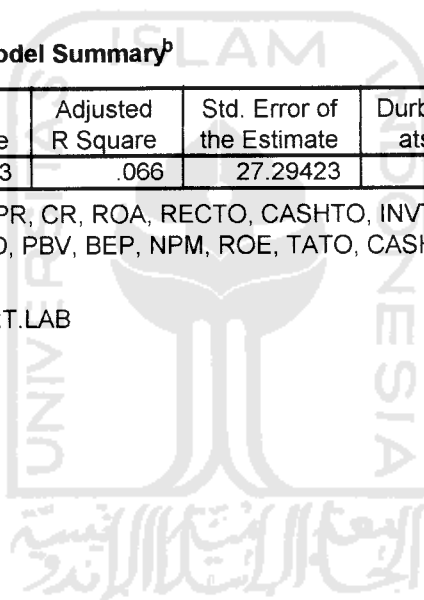
Statistik D Durbin Watson setelah data diurut.

Model Summary^p

Model	R	R Square	Adjusted R Square	Std. Error of the Estimate	Durbin-Watson
1	.351 ^a	.123	.066	27.29423	.463

a. Predictors: (Constant), DPR, CR, ROA, RECTO, CASHTO, INVTO, DR, FLM, PER, DIVYIELD, PBV, BEP, NPM, ROE, TATO, CASHTOCLDER, QR

b. Dependent Variable: PERT.LAB



Coefficients^a

Model		Unstandardized Coefficients		Standardized Coefficients	t	Sig.	Collinearity Statistics	
		B	Std. Error	Beta			Tolerance	VIF
1	(Constant)	.614	.149		4.135	.000		
	CR	5.347E-03	.003	.095	1.546	.123	.996	1.004
	RECTO	3.733E-03	.004	.063	1.031	.304	.994	1.006
	INVTO	-2.80E-03	.007	-.025	-.405	.686	.994	1.006
	CASHTO	8.389E-05	.002	.003	.052	.958	.980	1.020
	DR	-3.12E-02	.123	-.016	-.254	.800	.964	1.038
	PER	-1.36E-03	.001	-.135	-2.097	.037	.909	1.100
	DIVYIELD	-1.14E-02	.018	-.041	-.629	.530	.905	1.104
	DPR	2.910E-04	.001	.018	.279	.780	.858	1.165
	ROE	.257	.058	.273	4.414	.000	.986	1.014

a. Dependent Variable: PERT.LAB



Mc
1

ANOVA^b

Model		Sum of Squares	df	Mean Square	F	Sig.
1	Regression	40.994	9	4.555	3.128	.001 ^a
	Residual	346.603	238	1.456		
	Total	387.597	247			

a. Predictors: (Constant), ROE, CR, PER, INVTO, RECTO, CASHTO, DR, DIVYIELD, DPR

b. Dependent Variable: PERT.LAB



Data Rasio Keuangan

No	Tahun	CR	QR	CashToCL	RecTo	InvTo	CASHTO	TATO	DR	FLM	DER	BEP	NPM	ROA	ROE	PER	PBV	Div. Yield	DPR
1	1999	0.170	0.130	0.064	5.200	6.002	0.211	0.305	1.037	-26.913	-27.913	0.172	0.003	0.001	-0.027	295.970	-8.370	0.000	0.00
	2000	0.245	0.140	0.018	8.700	7.775	0.019	0.496	0.588	2.429	1.429	0.125	0.916	0.454	1.103	1.750	1.930	0.430	0.76
	2001	0.459	0.323	0.106	8.069	8.077	0.063	0.594	0.617	2.609	1.609	0.162	-0.083	-0.049	-0.129	-8.350	1.080	0.000	0.00
2	1999	0.507	0.370	0.117	9.234	10.459	0.053	0.717	0.580	2.382	1.382	0.165	0.050	0.036	0.085	8.230	0.700	0.500	2.06
	2000	0.777	0.932	0.109	4.004	61.108	0.035	1.894	0.604	2.525	1.525	0.590	0.043	0.062	0.208	5.900	1.230	5.000	29.50
	2001	0.663	0.663	0.085	4.878	50.593	0.031	1.615	0.637	2.755	1.755	0.419	0.070	0.113	0.311	4.790	1.490	3.570	17.11
3	1999	0.682	0.654	0.071	4.240	76.092	0.029	1.545	0.679	3.115	2.115	0.431	0.060	0.093	0.291	9.590	2.790	1.790	17.13
	2000	0.715	0.687	0.107	6.502	118.747	0.029	1.874	0.595	2.470	1.470	0.360	0.065	0.121	0.299	7.470	2.240	2.290	17.12
	2001	0.144	0.101	0.021	8.847	8.771	0.050	0.413	1.047	-21.353	-22.353	0.143	-0.169	-0.070	1.493	-4.360	-6.510	0.000	0.00
4	1999	0.083	0.051	0.010	18.148	8.468	0.032	0.546	1.840	-1.190	-2.190	0.150	-1.423	-0.777	-0.420	-0.400	-0.370	0.000	0.00
	2000	0.051	0.031	0.008	20.315	10.611	0.038	0.505	2.322	-0.756	-1.756	0.115	-0.713	-0.361	0.273	-0.530	-0.140	0.000	0.00
	2001	0.318	0.175	0.035	18.219	9.158	0.027	0.414	1.362	-2.765	-3.765	0.104	2.048	0.849	-2.346	1.640	-3.860	0.000	0.00
5	1999	4.826	2.301	0.953	14.898	3.496	0.099	0.785	0.270	1.370	0.370	0.391	0.095	0.074	0.102	14.910	1.520	0.000	0.00
	2000	1.788	0.633	0.073	11.762	2.263	0.026	0.610	0.266	1.253	0.334	0.386	-0.047	-0.029	-0.036	-9.970	0.360	0.000	0.00
	2001	1.790	0.697	0.298	6.396	1.824	0.134	0.490	0.266	1.401	0.401	0.394	-0.032	-0.022	-9.910	0.220	0.000	0.00	
6	1999	1.924	0.725	0.029	5.180	2.140	0.010	0.576	0.245	1.322	0.323	0.388	0.056	0.032	0.043	7.170	0.310	0.000	0.00
	2000	0.662	0.410	0.009	6.845	6.123	0.006	0.874	0.856	6.968	5.968	0.356	-0.003	-0.003	-0.019	-74.390	1.390	0.000	0.00
	2001	476.125	291.662	31.481	6.473	4.872	0.034	0.768	1.110	-9.050	-10.050	0.395	-0.322	-0.247	2.236	-0.330	-0.730	0.000	0.00
7	1999	112.896	58.137	6.294	8.321	5.264	0.021	0.664	0.392	1.644	0.644	0.254	0.012	0.008	0.013	38.800	0.510	0.000	0.00
	2000	333.894	191.950	41.534	17.196	10.441	0.026	0.758	0.370	1.588	0.588	0.159	0.037	0.028	0.044	5.050	0.220	0.000	0.00
	2001	2.463	2.163	1.092	6.152	7.538	0.257	0.692	0.385	1.625	0.625	0.402	0.269	0.167	0.303	2.780	0.840	3.540	9.83
8	1999	2.097	1.893	0.857	3.951	6.263	0.336	0.670	0.439	1.782	0.782	0.550	0.133	0.089	0.159	3.450	0.550	4.050	13.97
	2000	2.569	2.098	0.421	3.630	1.709	0.097	0.884	0.259	1.360	0.360	0.520	0.146	0.129	0.174	2.730	0.470	5.260	14.29
	2001	3.389	2.892	0.732	4.384	0.017	0.732	0.224	1.286	0.286	0.286	0.577	0.162	0.118	0.152	2.930	0.440	4.880	14.29
9	1999	1.306	0.895	0.809	201.761	10.643	0.093	2.591	0.542	2.182	1.182	0.389	0.035	0.091	0.198	34.630	6.960	1.160	40.09
	2000	1.361	1.028	0.944	98.188	8.251	0.165	2.263	0.556	2.250	1.250	0.537	0.062	0.140	0.315	1.620	5.110	1.160	18.79
	2001	1.130	0.790	0.895	132.008	9.194	0.102	2.825	0.505	2.027	1.027	0.469	0.044	0.123	0.249	13.350	3.330	1.420	18.96
10	1999	0.887	0.623	0.347	14.690	5.833	0.154	1.086	0.774	4.420	3.420	0.426	0.121	0.131	0.580	10.970	2.940	1.780	18.96
	2000	1.331	0.833	0.361	15.297	4.548	0.112	1.013	0.757	4.101	3.105	0.420	0.051	0.052	0.211	10.980	2.320	2.320	25.51
	2001	0.867	0.514	0.138	15.757	5.042	0.057	1.128	0.726	3.644	2.644	0.404	0.091	0.058	0.210	7.670	1.610	4.000	30.67
11	1999	1.646	1.014	0.315	12.439	4.520	0.083	1.080	0.780	4.164	3.164	0.469	0.048	0.048	0.219	7.020	1.540	4.570	32.74
	2000	6.806	5.905	2.848	3.096	6.070	0.403	0.417	0.525	2.105	1.105	0.402	0.083	0.035	0.073	16.050	1.180	0.000	0.00
	2001	4.893	3.877	1.362	3.574	4.430	0.222	0.522	0.545	2.200	1.200	0.417	-0.034	-0.018	-0.039	-18.040	0.710	0.000	0.00
12	1999	1.166	0.807	0.640	31.320	4.690	0.231	0.992	0.397	1.658	0.658	0.417	0.153	0.152	0.252	13.520	3.400	9.060	122.76
	2000	0.861	0.563	0.298	11.889	4.590	0.118	1.172	0.504	2.016	1.016	0.401	0.184	0.216	0.436	7.640	3.330	2.400	18.37
	2001	1.167	0.869	0.436	10.281	5.053	0.161	1.101	0.436	1.774	0.774	0.473	0.200	0.220	0.390	3.890	3.890	21.250	82.61
13	1999	1.235	0.889	0.447	11.331	4.796	0.142	1.142	0.404	1.679	0.679	0.449	0.157	0.179	0.301	6.810	2.050	11.260	76.72
	2000	0.856	0.209	0.046	30.125	4.608	0.014	1.760	1.412	-2.428	-3.428	0.474	-0.236	-0.415	1.007	-0.610	-0.620	0.000	0.00
	2001	0.140	0.052	0.020	32.021	11.371	0.022	2.014	2.537	-0.651	-1.651	0.313	-0.505	-1.017	0.661	-0.110	-0.070	0.000	0.00
14	1999	0.113	0.041	0.015	14.179	2.766	0.062	0.689	3.245	-0.445	-1.445	0.330	-0.750	-0.517	0.230	-0.140	-0.030	0.000	0.00
	2000	0.104	0.042	0.027	16.432	3.287	0.125	1.088	5.106	0.244	1.244	0.526	-1.007	-1.096	-0.267	-0.120	-0.030	0.000	0.00
	2001	4.654	3.133	2.134	11.150	3.221	0.259	1.102	0.151	1.178	0.178	0.622	0.202	0.223	0.263	7.100	1.870	5.710	40.56
15	1999	5.580	4.056	2.638	7.623	3.336	0.319	1.117	0.157	1.186	0.186	0.755	0.217	0.223	0.283	6.260	1.800	0.000	0.00
	2000	5.153	4.171	2.834	7.874	5.633	0.317	1.171	0.146	1.172	0.172	0.675	0.241	0.282	0.331	7.550	2.500	0.000	0.00
	2001	8.601	7.204	5.082	7.072	5.502	0.377	1.092	1.045	1.117	1.168	0.698	0.174	0.190	0.212	10.620	2.250	0.040	0.40

Koefisien Korelasi

Correlations

		PERT.LAB	CR	QR	CASHTOCL	RECTO	INVTO	CASHTO
PERT.LAB	Pearson Correlation	1	0.097315785	0.097876081	0.080782877	0.076787553	-0.005423024	0.012023555
	Sig. (2-tailed)		0.12640878	0.124229582	0.204863666	0.228233336	0.932284417	0.850565173
	N	248	248	248	248	248	248	248
CR	Pearson Correlation	0.097315785	1	0.998866762	0.95200209	0.003653828	0.011842818	0.00756991
	Sig. (2-tailed)	0.12640878		0	1.7645E-128	0.954346019	0.852785765	0.90558394
	N	248	248	248	248	248	248	248
QR	Pearson Correlation	0.097876081	0.998866762	1	0.961619759	0.001068303	0.018952016	-0.000399567
	Sig. (2-tailed)	0.124229582	0		3.6287E-140	0.986645106	0.766485211	0.9950048
	N	248	248	248	248	248	248	248
CASHTOCL	Pearson Correlation	0.080782877	0.95200209	0.961619759	1	0.013993685	0.012545083	-0.068036023
	Sig. (2-tailed)	0.204863666	1.7645E-128	3.6287E-140		0.82643959	0.844164191	0.285855996
	N	248	248	248	248	248	248	248
RECTO	Pearson Correlation	0.076787553	0.003653828	0.001068303	0.013993685	1	0.022646868	-0.005670148
	Sig. (2-tailed)	0.228233336	0.954346019	0.986645106	0.82643959		0.722674268	0.929206546
	N	248	248	248	248	248	248	248
INVTO	Pearson Correlation	-0.005423024	0.011842818	0.018952016	0.012545083	0.022646868	1	0.012662106
	Sig. (2-tailed)	0.932284417	0.852785765	0.766485211	0.844164191	0.722674268		0.842729294
	N	248	248	248	248	248	248	248
CASHTO	Pearson Correlation	0.012023555	0.00756991	-0.000399567	-0.068036023	-0.005670148	0.012662106	1
	Sig. (2-tailed)	0.850565173	0.90558394	0.9950048	0.285855996	0.929206546	0.842729294	
	N	248	248	248	248	248	248	248
TATO	Pearson Correlation	0.039325686	-0.03271227	-0.031382999	-0.026922732	0.415781047	0.328838026	0.076562215
	Sig. (2-tailed)	0.537623102	0.602051129	0.622829407	0.673087692	8.71924E-12	1.15468E-07	0.22960544
	N	248	248	248	248	248	248	248
NPM	Pearson Correlation	0.363902811	-0.003867099	-0.001408088	0.029046523	-0.036138579	-0.035102373	-0.057585758
	Sig. (2-tailed)	3.51553E-09	0.95168439	0.982398039	0.648958	0.571107762	0.582203063	0.366510223
	N	248	248	248	248	248	248	248
ROA	Pearson Correlation	0.284967247	-0.007882083	-0.004943291	0.029425269	0.107252123	0.09696414	-0.038593793
	Sig. (2-tailed)	5.11791E-06	0.901709595	0.938262219	0.64469213	0.091923034	0.127791496	0.54522513
	N	248	248	248	248	248	248	248
ROE	Pearson Correlation	0.273154145	0.003050851	0.005216122	0.016917828	0.058705188	0.043428966	-0.01423779
	Sig. (2-tailed)	1.28194E-05	0.961873851	0.934862105	0.790936107	0.357252043	0.496006834	0.823461186
	N	248	248	248	248	248	248	248
BEP	Pearson Correlation	0.011488802	-0.06265048	-0.058542295	-0.020529614	0.551788588	-0.002984692	-0.080664436
	Sig. (2-tailed)	0.857138851	0.325803402	0.358590069	0.747679018	3.67407E-21	0.962700036	0.205530594
	N	248	248	248	248	248	248	248
DR	Pearson Correlation	-0.027339472	-0.05212921	-0.055523254	-0.092246985	-0.019599227	-0.018392767	0.013518984
	Sig. (2-tailed)	0.668325409	0.41373408	0.383953214	0.147489016	0.758752694	0.773185501	0.832238654
	N	248	248	248	248	248	248	248
DER	Pearson Correlation	-0.064908869	-0.042043073	-0.04543156	-0.071472974	-0.031151315	-0.059526833	-0.007834707
	Sig. (2-tailed)	0.308632441	0.509869113	0.476334598	0.262157724	0.62540003	0.350550689	0.902297433
	N	248	248	248	248	248	248	248
FLM	Pearson Correlation	-0.059015602	-0.041762728	-0.045388977	-0.072022772	-0.006512826	-0.059472436	-0.002746781
	Sig. (2-tailed)	0.354710935	0.51269754	0.476748435	0.25849574	0.918719364	0.350991886	0.965671319
	N	248	248	248	248	248	248	248
PER	Pearson Correlation	-0.122643132	0.001818733	0.003907131	0.046350004	0.026050704	-0.03500258	-0.077611123
	Sig. (2-tailed)	0.05374124	0.977265957	0.951184849	0.467456548	0.683094836	0.583276874	0.223267949
	N	248	248	248	248	248	248	248
PBV	Pearson Correlation	-0.078727275	-0.047675976	-0.049361568	-0.030650361	0.075099266	-0.035889331	-0.093556769
	Sig. (2-tailed)	0.21666185	0.454801579	0.438994984	0.630973765	0.238655389	0.573767455	0.141801821
	N	248	248	248	248	248	248	248
DIVYIELD	Pearson Correlation	-0.011083356	-0.029013384	-0.026689331	0.011955448	-0.028807059	-0.020206515	-0.100266412
	Sig. (2-tailed)	0.862129211	0.649331791	0.675760598	0.851401818	0.651661042	0.751518883	0.115258442
	N	248	248	248	248	248	248	248
DPR	Pearson Correlation	-0.020322758	-0.012187383	-0.015786205	0.053649125	-0.017308379	-0.044107561	-0.091154283
	Sig. (2-tailed)	0.750136694	0.848553358	0.804628951	0.400233127	0.786224984	0.489292863	0.152364834
	N	248	248	248	248	248	248	248

Koefisien Korelasi

Correlations						
		FLM	PER	PBV	DIVYIELD	DPR
PERT.LAB	Pearson Correlation	-0.059015602	-0.122643132	-0.078727275	-0.011083356	-0.020322758
	Sig. (2-tailed)	0.354710935	0.05374124	0.21666185	0.862129211	0.750136694
	N	248	248	248	248	248
CR	Pearson Correlation	-0.041762728	0.001818733	-0.047675976	-0.029013384	-0.012187383
	Sig. (2-tailed)	0.51269754	0.977265957	0.454801579	0.649331791	0.848553358
	N	248	248	248	248	248
QR	Pearson Correlation	-0.045388977	0.003907131	-0.049361568	-0.026689331	-0.015786205
	Sig. (2-tailed)	0.476748435	0.951184849	0.438894984	0.675760598	0.804628951
	N	248	248	248	248	248
CASHTOCL	Pearson Correlation	-0.072022772	0.046350004	-0.030650361	0.011955448	0.053649125
	Sig. (2-tailed)	0.25849574	0.467456548	0.630973765	0.851401818	0.400233127
	N	248	248	248	248	248
RECTO	Pearson Correlation	-0.006512826	0.026050704	0.075099266	-0.028807059	-0.017308379
	Sig. (2-tailed)	0.918719364	0.683094836	0.238655389	0.651661042	0.786224984
	N	248	248	248	248	248
INVTO	Pearson Correlation	-0.059472436	-0.03500258	-0.035889331	-0.020206515	-0.044107561
	Sig. (2-tailed)	0.350991886	0.583276874	0.573767455	0.751518883	0.489292863
	N	248	248	248	248	248
CASHTO	Pearson Correlation	-0.002746781	-0.077611123	-0.093556769	-0.100266412	-0.091154283
	Sig. (2-tailed)	0.965671319	0.223267949	0.141801821	0.115258442	0.152364834
	N	248	248	248	248	248
TATO	Pearson Correlation	-0.130115383	-0.119016507	0.008795799	0.125235794	-0.066961134
	Sig. (2-tailed)	0.040616964	0.061281071	0.890383264	0.048836743	0.293554051
	N	248	248	248	248	248
NPM	Pearson Correlation	-0.205327413	-0.027024211	-0.144121846	0.139394621	0.025550417
	Sig. (2-tailed)	0.001146441	0.671926835	0.023205715	0.028176153	0.688861213
	N	248	248	248	248	248
ROA	Pearson Correlation	-0.154298512	-0.046221498	-0.103042728	0.155825458	-0.001087339
	Sig. (2-tailed)	0.015007307	0.468693226	0.105483332	0.014027096	0.986407154
	N	248	248	248	248	248
ROE	Pearson Correlation	-0.661782586	0.005391486	-0.48150986	0.073123898	0.020064733
	Sig. (2-tailed)	1.273E-32	0.932677283	8.46341E-16	0.251267926	0.753205828
	N	248	248	248	248	248
BEP	Pearson Correlation	-0.120664776	-0.101946161	0.065285784	0.272750226	-0.02204963
	Sig. (2-tailed)	0.057752779	0.109263085	0.305825684	1.32185E-05	0.729699211
	N	248	248	248	248	248
DR	Pearson Correlation	0.158133029	-0.073800446	-0.005641294	-0.124614122	-0.12830234
	Sig. (2-tailed)	0.012652318	0.2468972	0.929565857	0.04997734	0.043523597
	N	248	248	248	248	248
DER	Pearson Correlation	0.955782104	-0.06693717	0.518433321	-0.126085611	-0.094403999
	Sig. (2-tailed)	9.2574E-133	0.293727229	1.84125E-18	0.047312773	0.138213249
	N	248	248	248	248	248
FLM	Pearson Correlation	1	-0.066540063	0.5471866	-0.131347206	-0.096665086
	Sig. (2-tailed)		0.296606974	9.03049E-21	0.038736877	0.128976587
	N	248	248	248	248	248
PER	Pearson Correlation	-0.066540063	1	0.163779657	-0.055859529	0.261236059
	Sig. (2-tailed)	0.296606974		0.009776277	0.38107532	3.10357E-05
	N	248	248	248	248	248
PBV	Pearson Correlation	0.5471866	0.163779657	1	-0.094841007	0.223583918
	Sig. (2-tailed)	9.03049E-21	0.009776277		0.136389632	0.000387817
	N	248	248	248	248	248
DIVYIELD	Pearson Correlation	-0.131347206	-0.055859529	-0.094841007	1	0.237793582
	Sig. (2-tailed)	0.038736877	0.38107532	0.136389632		0.000156687
	N	248	248	248	248	248
DPR	Pearson Correlation	-0.096665086	0.261236059	0.223583918	0.237793582	1
	Sig. (2-tailed)	0.128976587	3.10357E-05	0.000387817	0.000156687	
	N	248	248	248	248	248

Model Summary^b

Model	R	R Square	Adjusted R Square	Std. Error of the Estimate	Durbin-Watson
1	.325 ^a	.106	.072	1.20678	.183

a. Predictors: (Constant), DPR, CR, RECTO, INVTO, ROE, CASHTO, DR, PER, DIVYIELD

b. Dependent Variable: PERT.LAB

