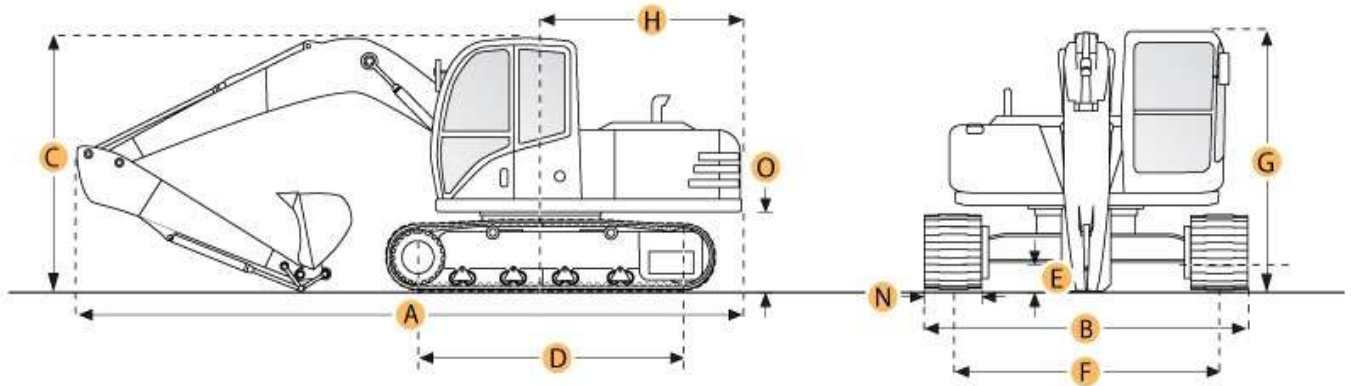


LAMPIRAN

Lampiran 1. Spesifikasi *Excavator* Komatsu PC200-8

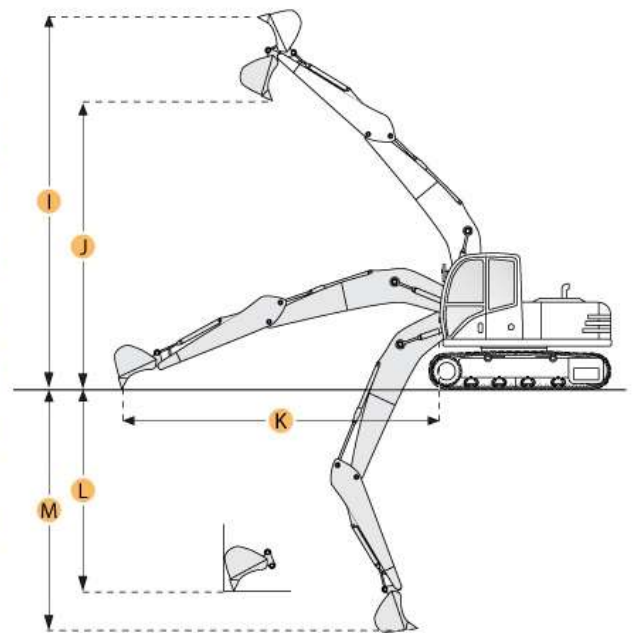


Selected Dimensions

Boom/Stick Option	Boom/Stick Option (HEX) 1 ▾	
A. SHIPPING LENGTH OF UNIT	18.7 ft in	5700 mm
C. SHIPPING HEIGHT OF UNIT	10.5 ft in	3190 mm
I. MAX CUTTING HEIGHT	32.2 ft in	9800 mm
J. MAX LOADING HEIGHT	22.6 ft in	6890 mm
K. MAX REACH ALONG GROUND	30.2 ft in	9190 mm
L. MAX VERTICAL WALL DIGGING DEPTH	17.8 ft in	5430 mm
M. MAX DIGGING DEPTH	20 ft in	6095 mm
Dimensions		
B. WIDTH TO OUTSIDE OF TRACKS	9.8 ft in	3000 mm
D. LENGTH OF TRACK ON GROUND	10.7 ft in	3275 mm
E. GROUND CLEARANCE	1.4 ft in	440 mm
G. HEIGHT TO TOP OF CAB	10 ft in	3040 mm
H. TAIL SWING RADIUS	9 ft in	2750 mm
O. COUNTERWEIGHT CLEARANCE	3.6 ft in	1085 mm
Undercarriage		
F. TRACK GAUGE	7.2 ft in	2200 mm
N. SHOE SIZE	31.5 in	800 mm

Specification

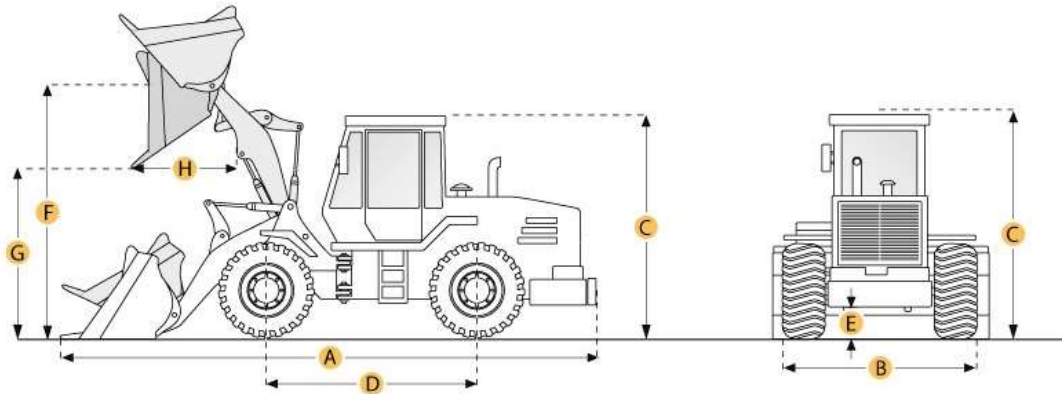
Engine



Lampiran 2. Spesifikasi *Excavator* Komatsu PC200-8

Specification		
Engine		
MAKE	Komatsu	
MODEL	SAA6D107E-1	
GROSS POWER	155 hp	116 kw
NET POWER	148 hp	110 kw
POWER MEASURED @	2000 rpm	
DISPLACEMENT	408 cu in	6.7 L
ASPIRATION	Turbocharged and aftercooled	
NUMBER OF CYLINDERS	6	
Operational		
OPERATING WEIGHT	44114.5 lb	20010 kg
FUEL CAPACITY	105.7 gal	400 L
COOLING SYSTEM FLUID CAPACITY	5.4 gal	20.4 L
HYDRAULIC SYSTEM FLUID CAPACITY	35.7 gal	135 L
ENGINE OIL CAPACITY	6.1 gal	23.1 L
SWING DRIVE FLUID CAPACITY	1.7 gal	6.6 L
OPERATING VOLTAGE	24 V	
ALTERNATOR SUPPLIED AMPERAGE	50 amps	
HYDRAULIC SYSTEM RELIEF VALVE PRESSURE	5400 psi	37231.7 kPa
HYDRAULIC PUMP FLOW CAPACITY	116 gal/min	439.1 L/min
Swing Mechanism		
SWING SPEED	12.4 rpm	
SWING TORQUE	49907 lb ft	67664.8 Nm
Undercarriage		
NUMBER OF SHOES PER SIDE	45	
SHOE SIZE	31.5 in	800 mm
NUMBER OF CARRIER ROLLERS PER SIDE	2	
NUMBER OF TRACK ROLLERS PER SIDE	7	
MAX TRAVEL SPEED	3.4 mph	5.5 km/h
DRAWBAR PULL	40120 lb	178 kN
TRACK GAUGE	7.2 ft in	2200 mm
Buckets		
REFERENCE BUCKET CAPACITY	1.3 yd ³	1 m ³
MINIMUM BUCKET CAPACITY	0.65 yd ³	0.5 m ³
MAXIMUM BUCKET CAPACITY	1.6 yd ³	1.2 m ³
Boom/Stick Option (HEX) 1		
BOOM/STICK OPTION (HEX) 1	None / 7.92ft 2410mm	
SHIPPING HEIGHT OF UNIT	10.5 ft in	3190 mm
SHIPPING LENGTH OF UNIT	18.7 ft in	5700 mm
MAX DIGGING DEPTH	20 ft in	6095 mm
MAX REACH ALONG GROUND	30.2 ft in	9190 mm
MAX CUTTING HEIGHT	32.2 ft in	9800 mm
MAX LOADING HEIGHT	22.6 ft in	6890 mm
MAX VERTICAL WALL DIGGING DEPTH	17.8 ft in	5430 mm
Boom/Stick Option (HEX) 2		
BOOM/STICK OPTION (HEX) 2	None / 9.58ft 2925mm	
SHIPPING HEIGHT OF UNIT	10 ft in	3040 mm
SHIPPING LENGTH OF UNIT	15.8 ft in	4815 mm
MAX DIGGING DEPTH	21.8 ft in	6620 mm
MAX REACH ALONG GROUND	31.8 ft in	9700 mm
MAX CUTTING HEIGHT	32.8 ft in	10000 mm
MAX LOADING HEIGHT	23.3 ft in	7110 mm
MAX VERTICAL WALL DIGGING DEPTH	19.6 ft in	5980 mm
Dimensions		
WIDTH TO OUTSIDE OF TRACKS	9.8 ft in	3000 mm
HEIGHT TO TOP OF CAB	10 ft in	3040 mm
GROUND CLEARANCE	1.4 ft in	440 mm
COUNTERWEIGHT CLEARANCE	3.6 ft in	1085 mm
TAIL SWING RADIUS	9 ft in	2750 mm
LENGTH OF TRACK ON GROUND	10.7 ft in	3275 mm

Lampiran 3. Spesifikasi Wheel Loader Komatsu WA380-3



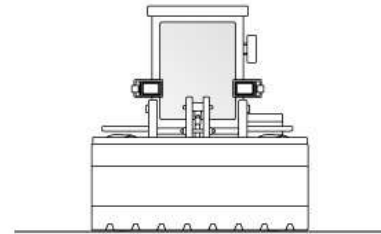
Selected Dimensions

Bucket

G. DUMP CLEARANCE AT MAX RAISE	9.6 ft in	2925 mm
--------------------------------	-----------	---------

Dimensions

A. LENGTH WITH BUCKET ON GROUND	26.1 ft in	7965 mm
B. WIDTH OVER TIRES	8.8 ft in	2695 mm
C. HEIGHT TO TOP OF CAB	10.9 ft in	3315 mm
D. WHEELBASE	10.5 ft in	3200 mm
E. GROUND CLEARANCE	1.3 ft in	390 mm
F. HINGE PIN - MAX HEIGHT	13.2 ft in	4030 mm
H. REACH AT MAX LIFT AND DUMP	3.8 ft in	1170 mm



Specification

Engine

MAKE	Komatsu	
MODEL	S6D108	
GROSS POWER	187.7 hp	140 kw
DISPLACEMENT	436.3 cu in	7.2 L

Operational

OPERATING WEIGHT	35902.3 lb	16285 kg
FUEL CAPACITY	75.8 gal	287 L
STATIC TIPPING WEIGHT	27513.7 lb	12480 kg
TURNING RADIUS	21.1 ft in	6430 mm
TIRE SIZE	20.5-25-16PR	

Transmission

NUMBER OF FORWARD GEARS	4	
NUMBER OF REVERSE GEARS	4	
MAX SPEED - FORWARD	19.6 mph	31.5 km/h
MAX SPEED - REVERSE	20.2 mph	32.5 km/h

Bucket

BREAKOUT FORCE	33300 lb	148.1 kN
DUMP CLEARANCE AT MAX RAISE	9.6 ft in	2925 mm
BUCKET WIDTH	9.5 ft in	2905 mm
BUCKET CAPACITY - HEAPED	4.2 yd ³	3.2 m ³
BUCKET CAPACITY - STRUCK	3.5 yd ³	2.7 m ³

Dimensions

LENGTH WITH BUCKET ON GROUND	26.1 ft in	7965 mm
WIDTH OVER TIRES	8.8 ft in	2695 mm
HEIGHT TO TOP OF CAB	10.9 ft in	3315 mm
GROUND CLEARANCE	1.3 ft in	390 mm
WHEELBASE	10.5 ft in	3200 mm
HINGE PIN - MAX HEIGHT	13.2 ft in	4030 mm
REACH AT MAX LIFT AND DUMP	3.8 ft in	1170 mm

Lampiran 4. Daftar Harga Sewa Alat Berat

HEAVY EQUIPMENT PRICE LIST						
NO	JENIS BARANG / PERALATAN		KAPASITAS	TAHUN PEMBUATAN	KONDISI	HARGA
	Nama Barang	Merk				
1	2	3	4	5	6	7 Rp / Hari Ex. Pkm
BULLDOZER						
1	BD 2 G	KOMATSU	6 ton	2003	Baik	Rp 130,000.00
2	BD 2 H	KOMATSU	6 ton	2003	Baik	Rp 130,000.00
3	BD 2 J	KOMATSU	6 ton	2003	Baik	Rp 130,000.00
4	D 31 P - 20	KOMATSU	8 ton	2003	Baik	Rp 145,000.00
5	D 31 P - 21	KOMATSU	8 ton	2003	Baik	Rp 145,000.00
6	D 31 P - 18	KOMATSU	8 ton	2003	Baik	Rp 145,000.00
7	D 40 P	KOMATSU	10 ton	1996	Baik	Rp 150,000.00
8	D 50 P	KOMATSU	15 ton	1996	Baik	Rp 175,000.00
9	D 53 P	KOMATSU	15 ton	2000	Baik	Rp 175,000.00
10	D 5 G	CATERPILLAR	15 ton	2007	Baik	Rp 175,000.00
11	D 61	KOMATSU	16 ton	2012	Baik	Rp 250,000.00
12	D 65 PX	KOMATSU	18 ton	2008	Baik	Rp 250,000.00
13	BDZ SD 13	SHANTUI	14 ton	2010	Baik	Rp 200,000.00
14	BDZ SD 16	SHANTUI	17 ton	2010	Baik	Rp 250,000.00
WHEEL LOADER						
1	Wheel Loader 966	CATERPILLAR	5 m ³	2012	Baik	Rp 300,000.00
2	Wheel Loader WA 380-3	CATERPILLAR-Komatsu	3 m ³	2012	Baik	Rp 2.800,000.00
VIBRO COMPACTOR						
1	Vibro Compactor	BOMAG	7 ton	1995	Baik	Rp 175,000.00
2	Vibro Compactor	SAKAI	6 ton	1995	Baik	Rp 175,000.00
3	Vibro Compactor	SW 350	3.5 ton	1995	Baik	Rp 175,000.00
4	Vibro Compactor	BOMAG	10-12 ton	2009	Baik	Rp 175,000.00
5	Vibro Compactor	VOLVO	10-12 ton	2009	Baik	Rp 175,000.00
6	Vibro Compactor	HAMM	10-12 ton	2010	Baik	Rp 175,000.00
7	Vibro Compactor	DYNAPAC	15 ton	2013	Baik	Rp 175,000.00
EXCAVATOR						
1	Excavator PC 50	KOMATSU	5 ton	2011	Baik	Rp 125,000.00
2	Excavator PC 75	KOMATSU	7.5 ton	2011	Baik	Rp 135,000.00
3	Excavator PC 100	KOMATSU	10 ton	1998	Baik	Rp 135,000.00
4	Excavator PC 200	KOMATSU	20 ton	1997	Baik	Rp 175,000.00
5	Excavator PC 200 - 6	KOMATSU	20 ton	2009	Baik	Rp 175,000.00
6	Excavator PC 200 - 7	KOMATSU	20 ton	2009	Baik	Rp 175,000.00
7	Excavator PC 200 - 8	KOMATSU	20 ton	2012	Baik	Rp 175,000.00
8	Excavator SE 210 - 1	SAMSUNG	20 ton	1995	Baik	Rp 175,000.00

6500 cadangan

Lampiran 5. Daftar Harga Sewa Alat Berat

Excavator PC 210	KOMATSU	21 ton	2009	Baik	Rp 175,000.00
Excavator SK 200 - 5	KOBELCO	20 ton	1998	Baik	Rp 175,000.00
Excavator SK 200 - 6	KOBELCO	20 ton	2005	Baik	Rp 175,000.00
Excavator SK 200 - 8	KOBELCO GEOSPEC	20 ton	2007	Baik	Rp 175,000.00
Excavator SK 200 - 8	KOBELCO Super X	20 ton	2012	Baik	Rp 175,000.00
Excavator SK 200 - 8	KOBELCO Super X	21 ton	2013	Baik	Rp 175,000.00
Excavator 320 D	CATERPILLAR	21 ton	2008	Baik	Rp 175,000.00
Excavator 320 D	CATERPILLAR	22 ton	2012	Baik	Rp 175,000.00
Excavator 320 B	CATERPILLAR	22 ton	2005	Baik	Rp 175,000.00
Excavator Zaxis EX 200	HITACHI	20 ton	2008	Baik	Rp 175,000.00
Excavator EC 210 B	VOLVO	21 ton	2009	Baik	Rp 175,000.00
Excavator DX 225 LCA	DOOSAN	22.5 ton	2010	Baik	Rp 175,000.00
Excavator 921 C	KEIHATSU	20 ton	2011	Baik	Rp 175,000.00
Excavator 210 R - 7H	HYUNDAI	20 ton	2011	Baik	Rp 175,000.00
Breaker					
Breaker	Soosan SB 18		2012	Baik	Rp 350,000.00
DUMP TRUCK / TRONTON					
Dump Truck	Toyota Dyna Rino	7 m ³	2008/2009	Baik	Rp 500,000.00
Dump Truck	Toyota Dyna Rino	7 m ³	2012	Baik	Rp 500,000.00
Dump Truck	Toyota Dyna Rino	7 m ³	2013	Baik	Rp 500,000.00
Dump Truck	Toyota Dyna Rino	7 m ³	2014	Baik	Rp 500,000.00
Dump Truck	Mitsubishi	7 m ³	2009	Baik	Rp 500,000.00
Dump Truck	Mitsubishi	7 m ³	2011	Baik	Rp 500,000.00
Dump Truck	Mitsubishi	20 ton	1998	Baik	Rp 500,000.00
Dump Truck Tronton	Nissan	20 m ³	2008	Baik	
Dump Truck Tronton	Hino	20 m ³	2013	Baik	parkan
Tangki Air	Colt Diesel	5.000 itr	1997	Baik	
Self Loader	Nissan	25 ton	1997	Baik	
Self Loader	Mitsubishi	25 ton	2001	Baik	
Self Loader	Mitsubishi	25 ton	2014	Baik	

- Mobilisasi & Demobilisasi unit berdasarkan jarak. Untuk tarif dalam kota Rp 1.500.000,- Harga selanjutnya menyesuaikan jarak
 - Untuk pemakaian unit dibutuhkan DP (Down Payment) pada awal, sejumlah 50 jam atau disesuaikan dengan lama pemakaian
 - Harga belum termasuk pajak - pajak (apabila diperlukan)
 - Harga sewa belum termasuk BBM (Solar)
 - Akomodasi dan Uang Makan operator menjadi tanggungan Penyewa
 - Uang Makan operator sebesar Rp 150.000,- / hari dimulai pukul : 08.00 - 16.00 (- 1 jam)
 - Overtime pekerjaan diatas pukul 16.00 dihitung Rp 25.000,-
 - Keamanan unit di site sepenuhnya menjadi tanggung jawab Penyewa, apabila terjadi kehilangan spareparts akan menjadi tanggung jawab Penyewa

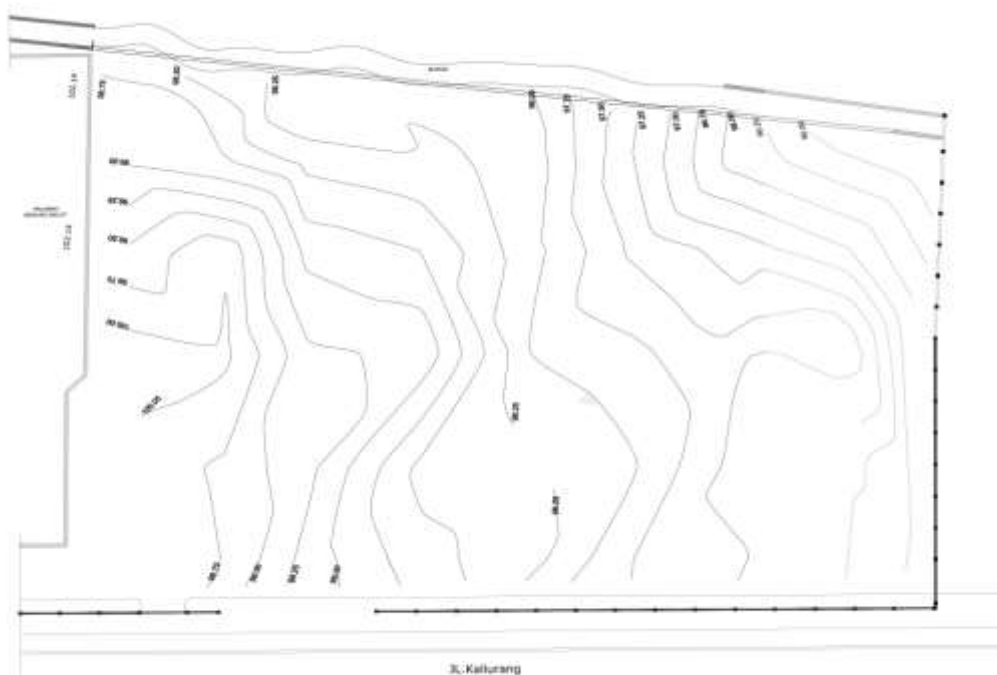
Lampiran 6. Lokasi Galian dan Timbunan



Lampiran 7. Pekerjaan Galian



Lampiran 8. Kontur Tanah



Lampiran 9. Site Plan Galian dan Timbunan

