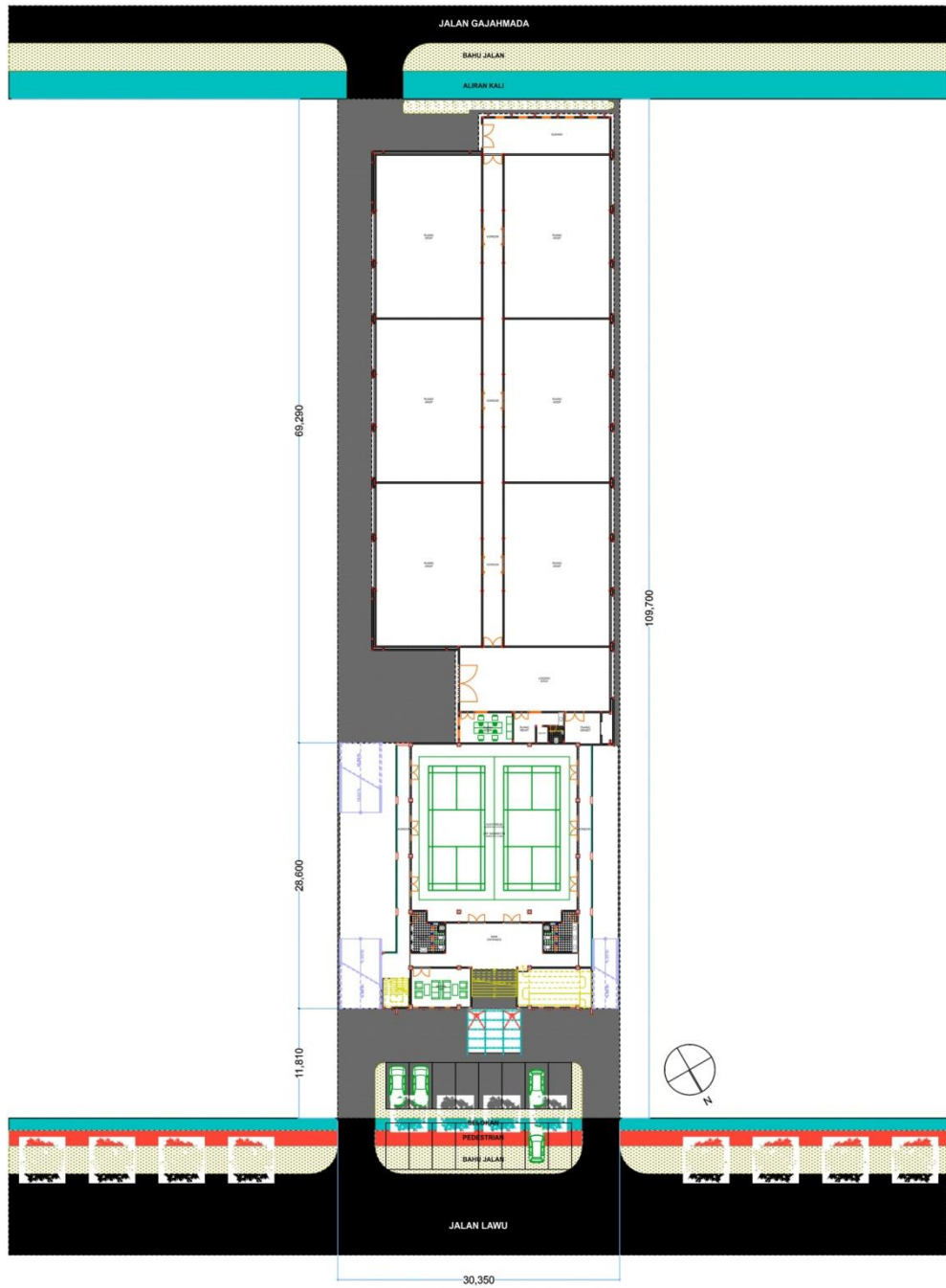


LAMPIRAN

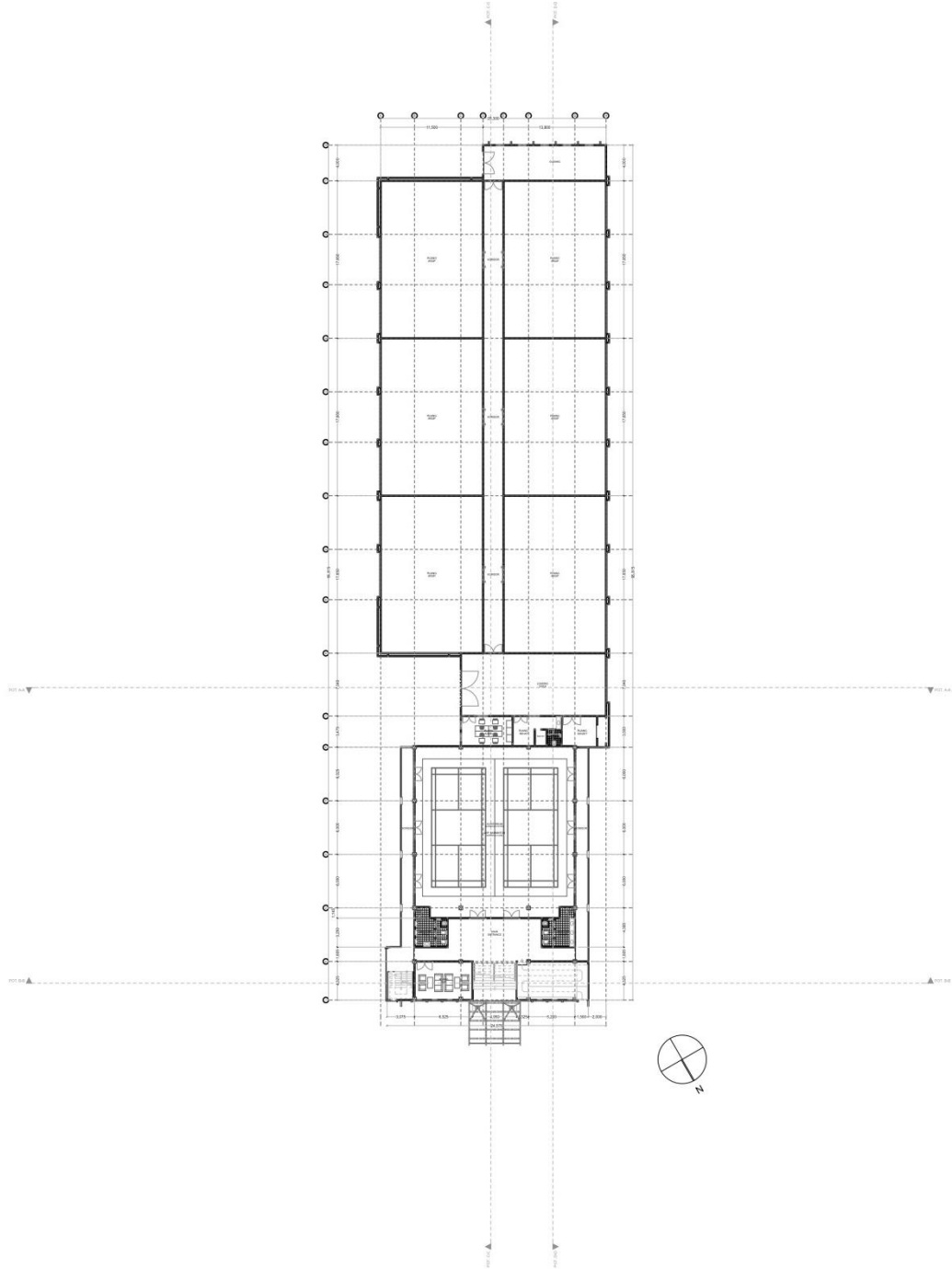
3D Perspektif Bangunan



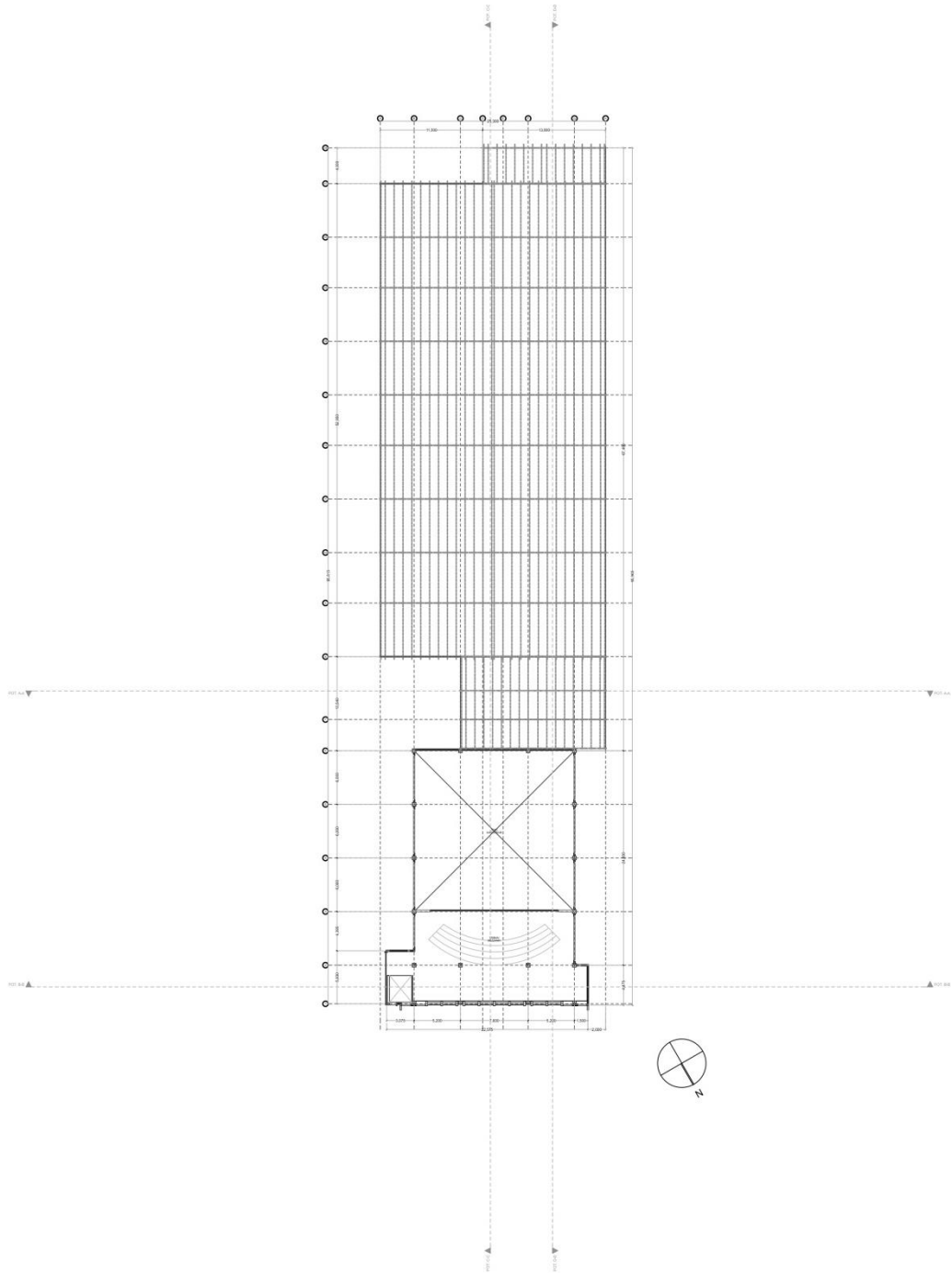
Siteplan (Skala 1:800)



Denah Lantai 1 (Skala 1:800)



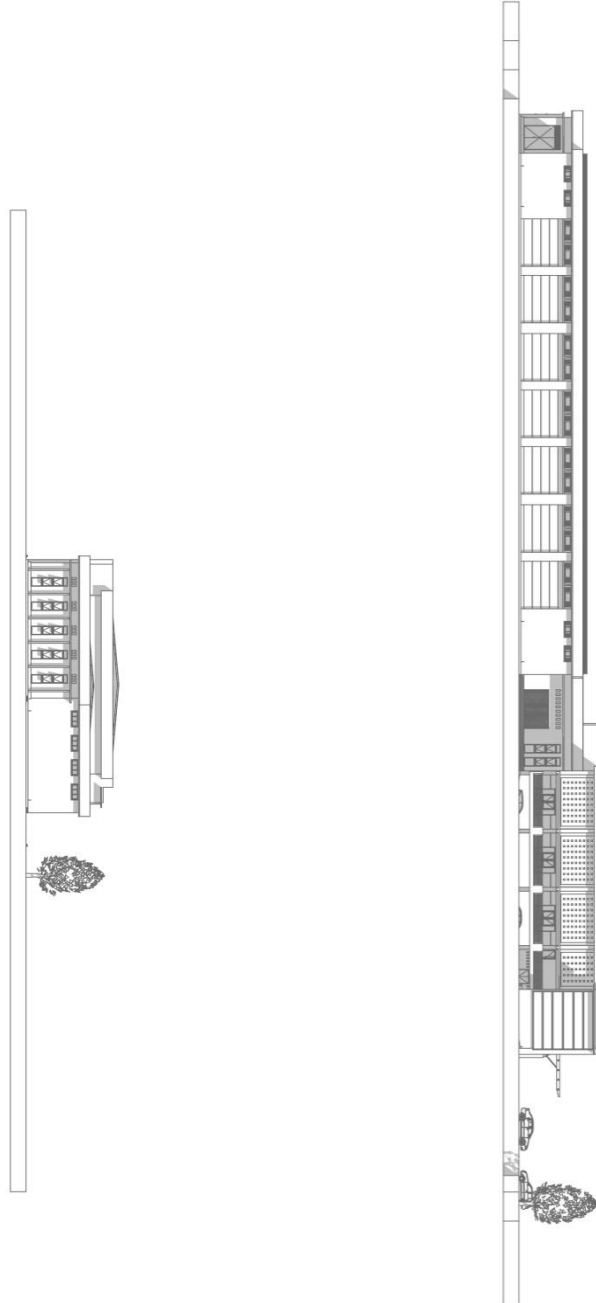
Denah Mezzanin (Skala 1:800)



Tampak Utara & Barat (Skala 1:800)

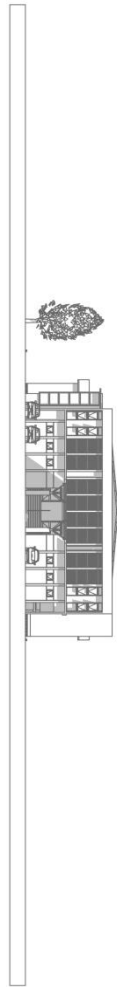
TAMPAK UTARA

TAMPAK BARAT

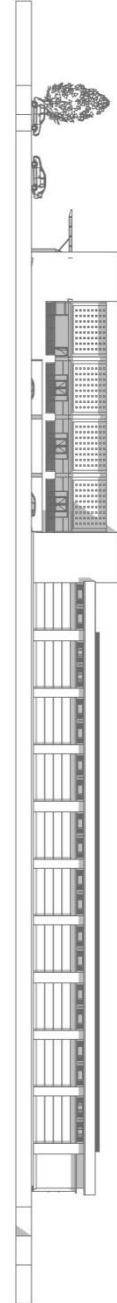


Tampak Timur & Tampak Selatan (Skala 1:800)

TAMPAK TIMUR

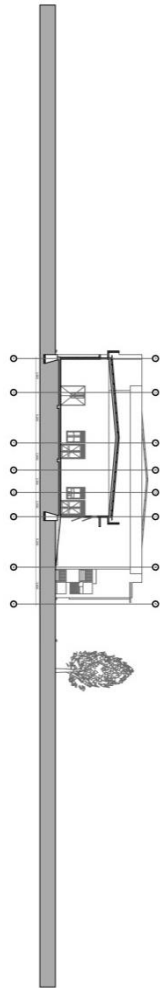


TAMPAK SELATAN

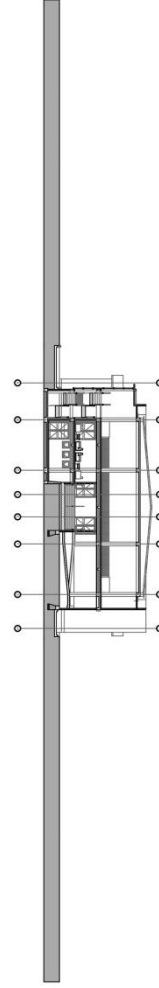


Potongan A-A & B-B (Skala 1:800)

POTONGAN A-A

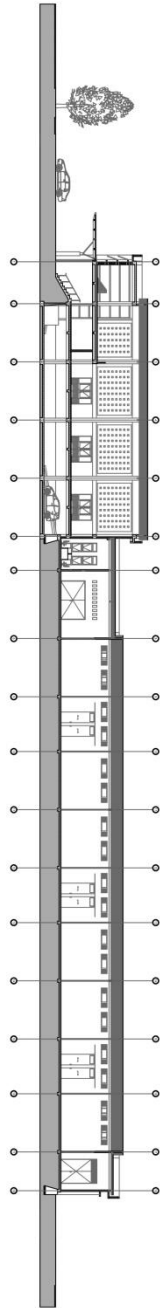


POTONGAN B-B



Potongan C-C & D-D (Skala 1:800)

POTONGAN C-C



POTONGAN D-D

