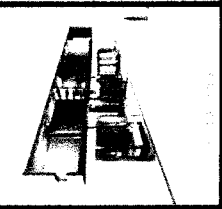
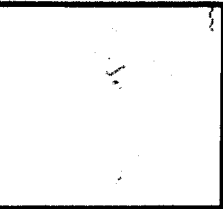
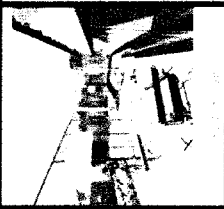
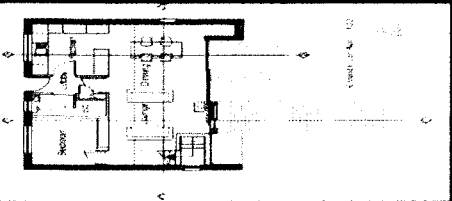
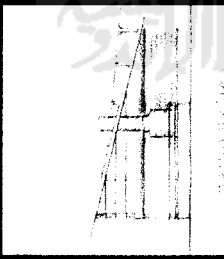
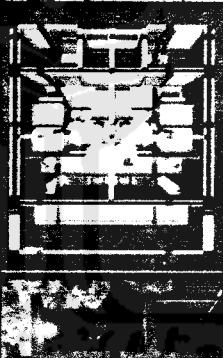
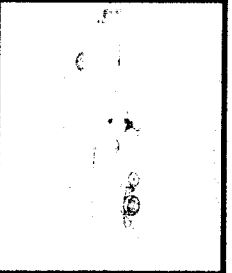
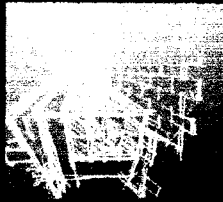
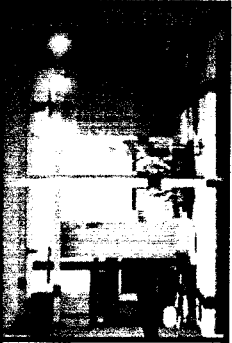
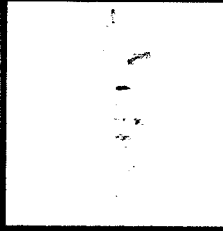


Rumah Suan

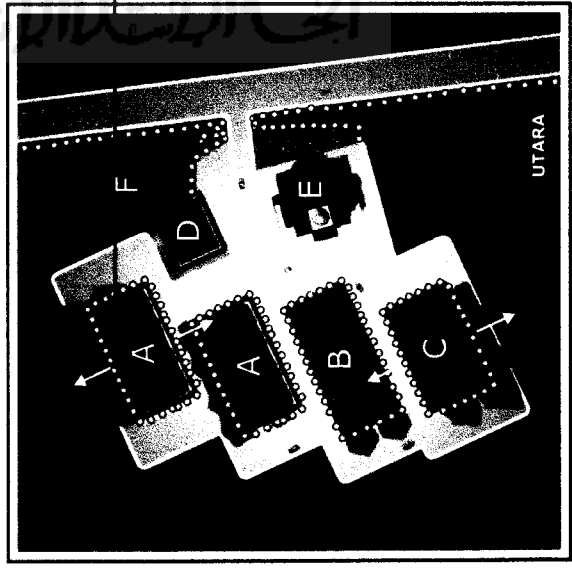
DESIGN REPORT



SITUASI

PENGEMBANGAN RANCANGAN

Berbagai perubahan kecil yang terjadi selama proses perancangan tidak lepas dari konsep dasar perancangan



Orientasi bangunan agak menyerong menghadap utara - selatan, di maksud untuk menghindari panas terhadap sinar matahari secara langsung.

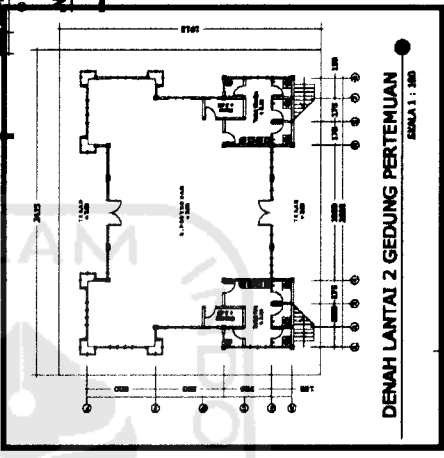
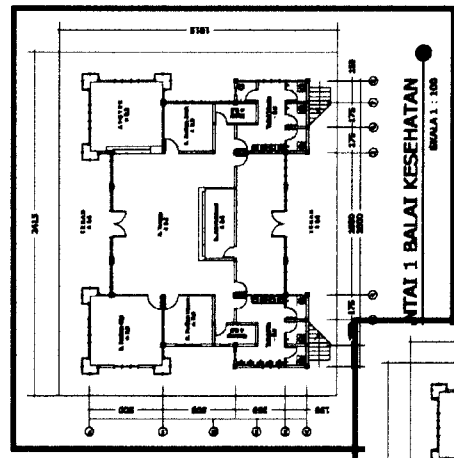
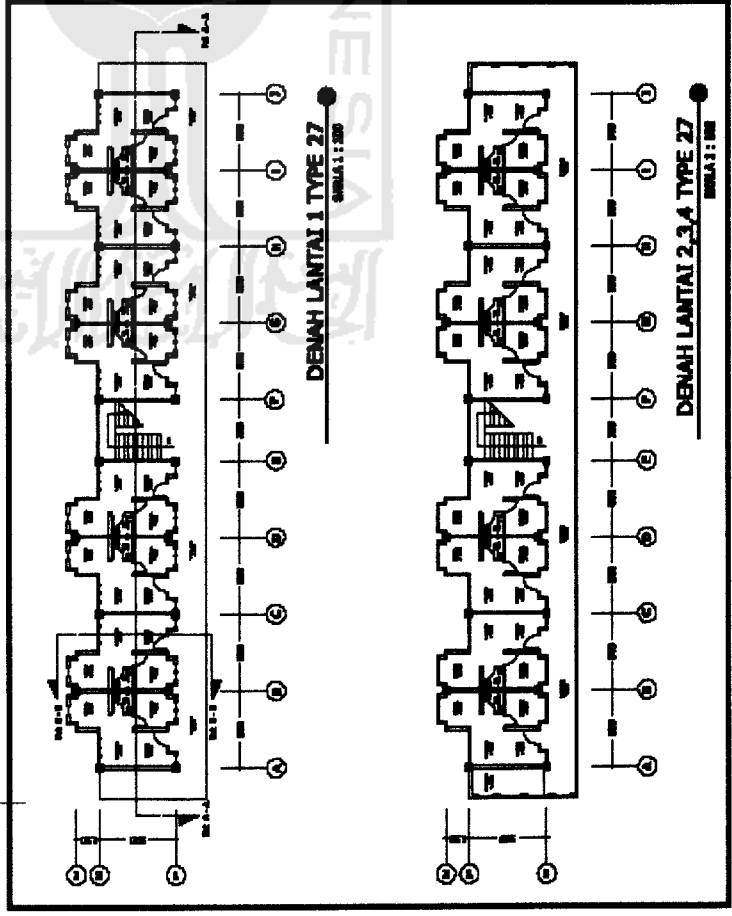
→ Penggunaan pohon sebagai barrier dan filter terhadap kebisingan



- A. Unit Type 27
- B. Unit Type 36
- C. Unit Type 36 & 45
- D. Unit Balai Kesehatan & Gedung Pertemuan
- E. Musholla
- F. Sarana Olah Raga

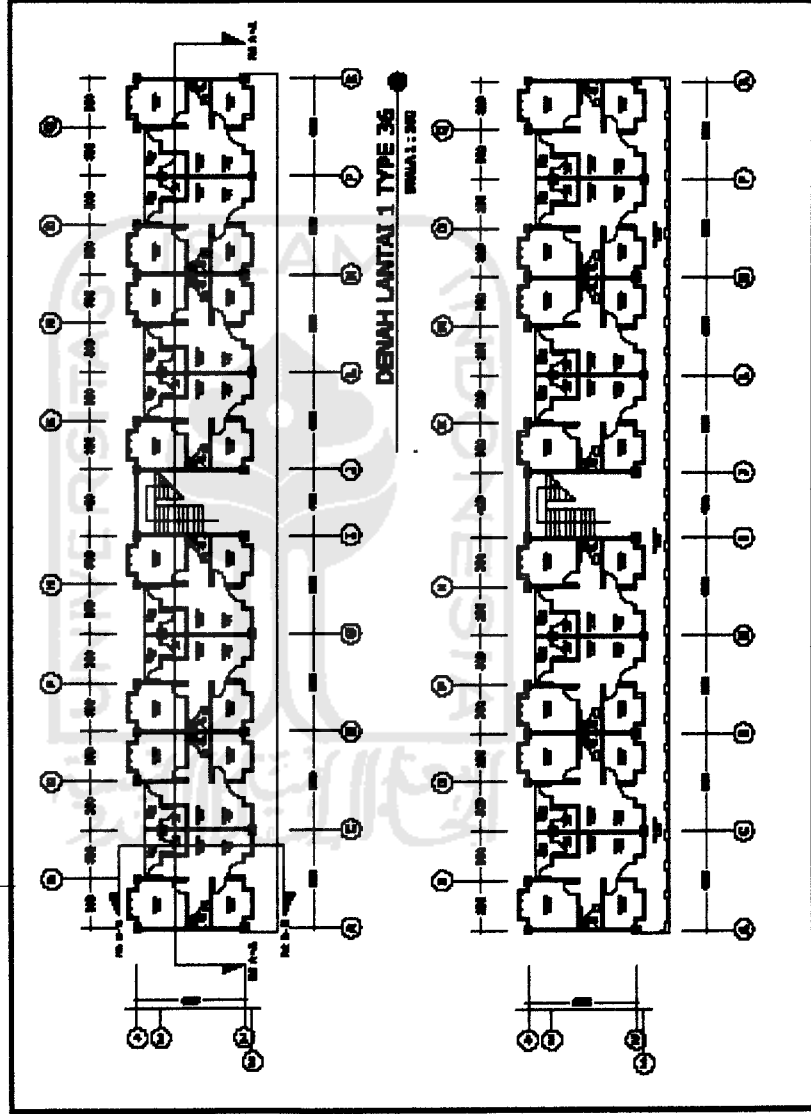
DESIGN REPORT

DENAH UNIT TYPE 27



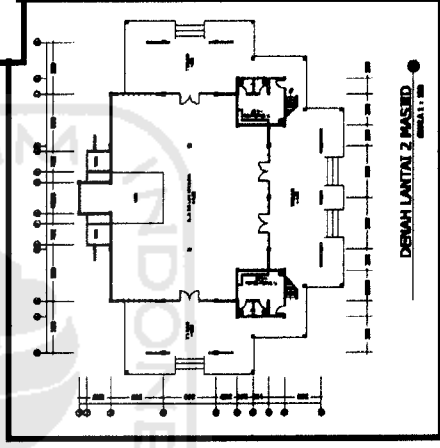
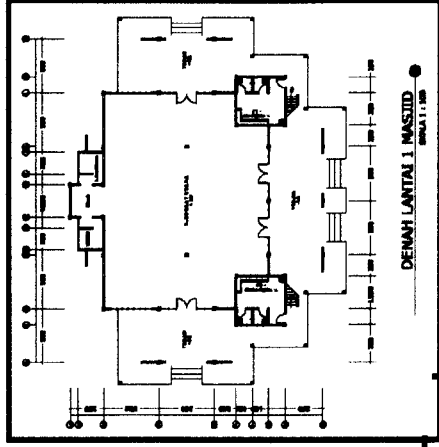
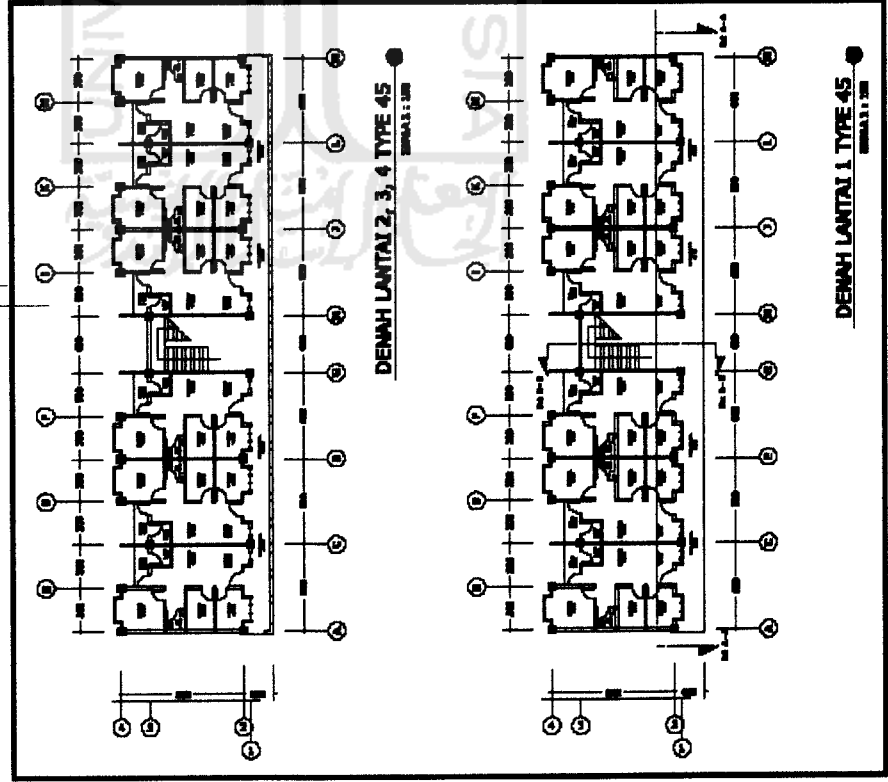
DENAH G. PERTEMUAN DAN KESEHATAN

DENAH UNIT TYPE 36



DESIGN REPORT

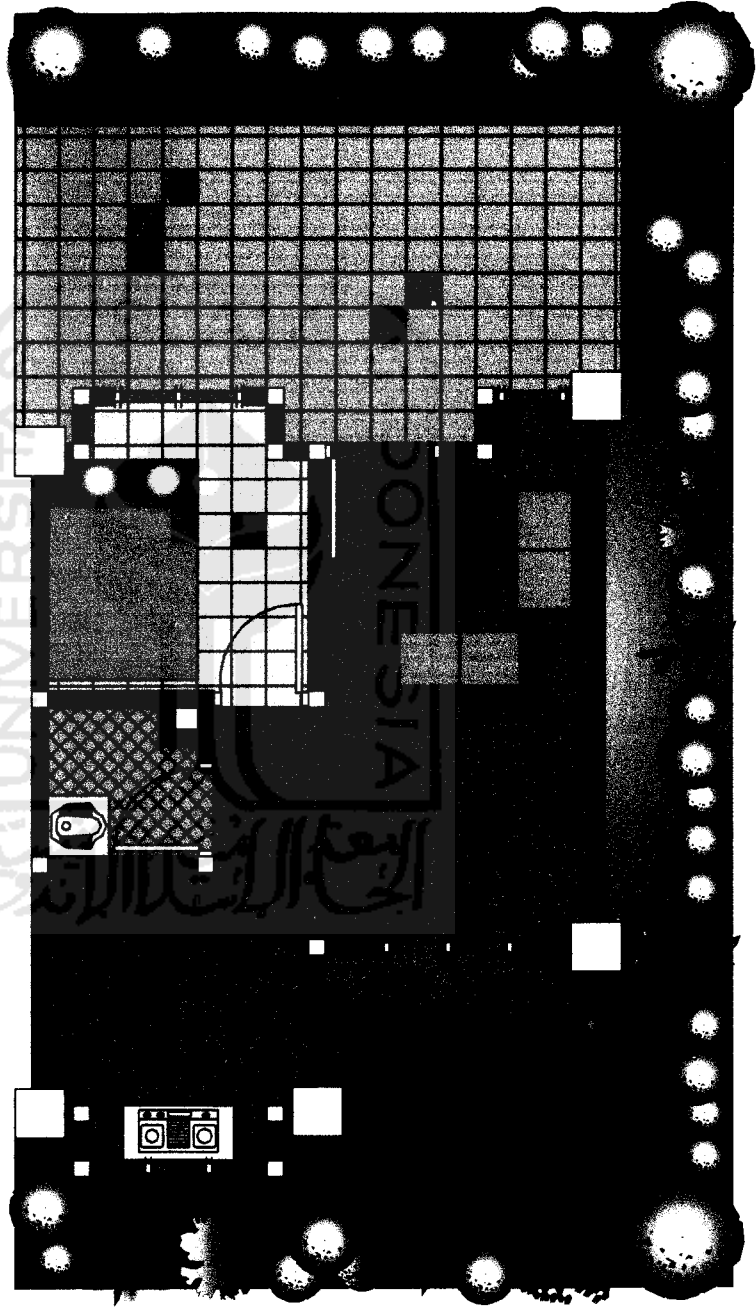
DENAH UNIT TYPE 45



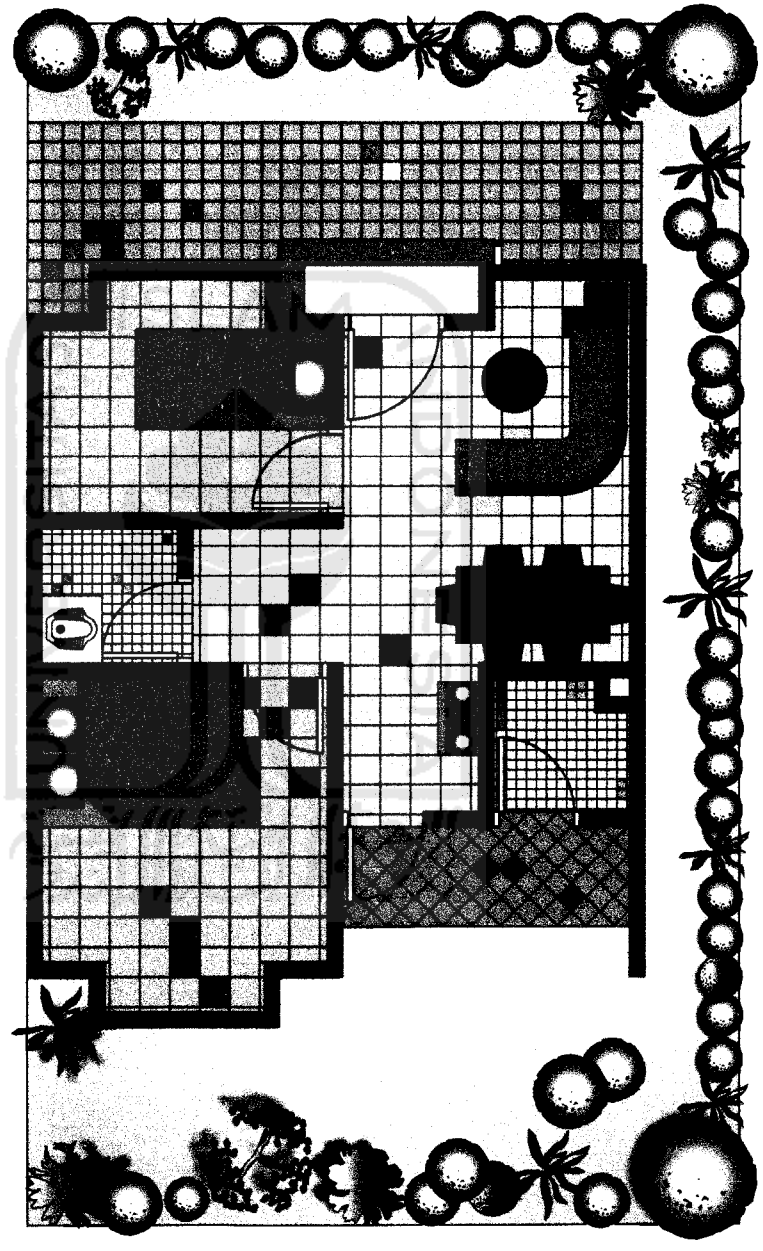
DENAH MASJID

DESIGN REPORT

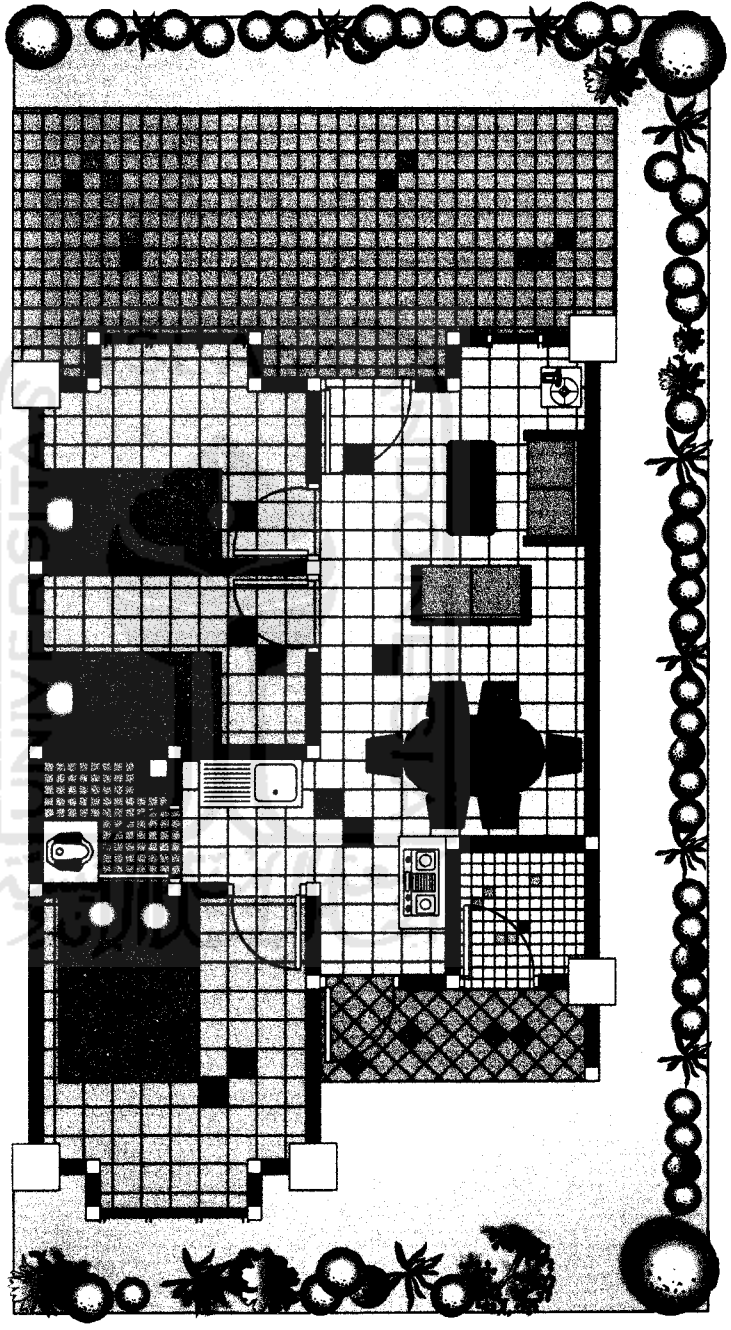
LAYOUT UNIT TYPE 27



LAYOUT UNIT TYPE 36

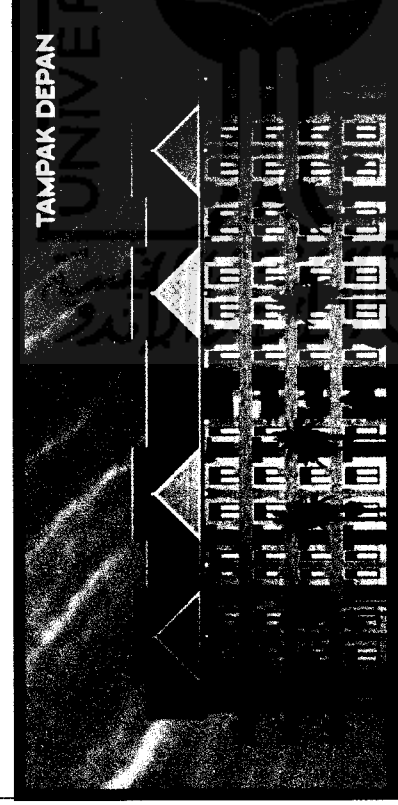


LAYOUT UNIT TYPE 45

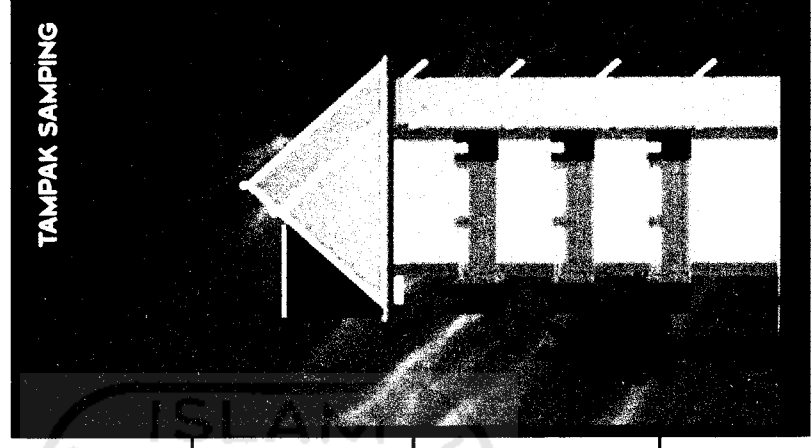


DESIGN REPORT

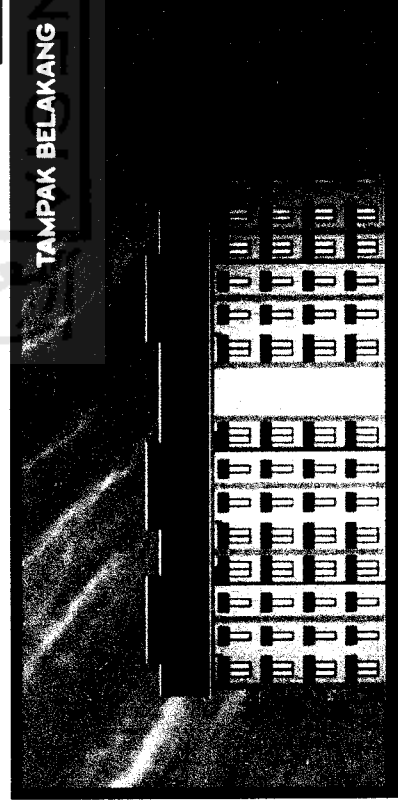
TAMPAK UNIT TYPE 27



TAMPAK DEPAN



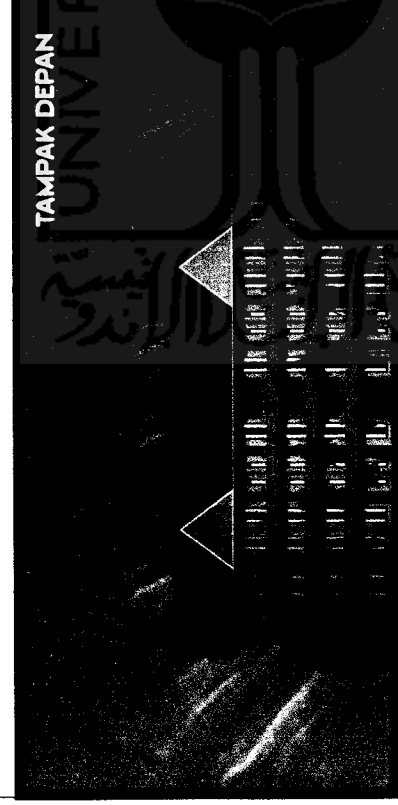
TAMPAK SAMPING



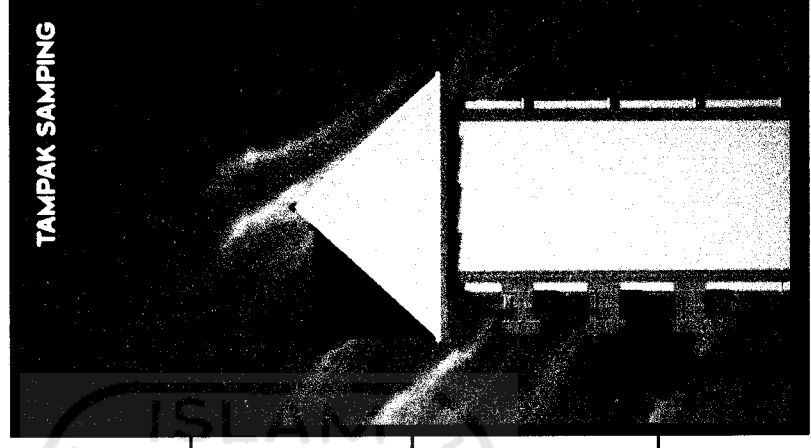
TAMPAK BELAKANG

DESIGN REPORT

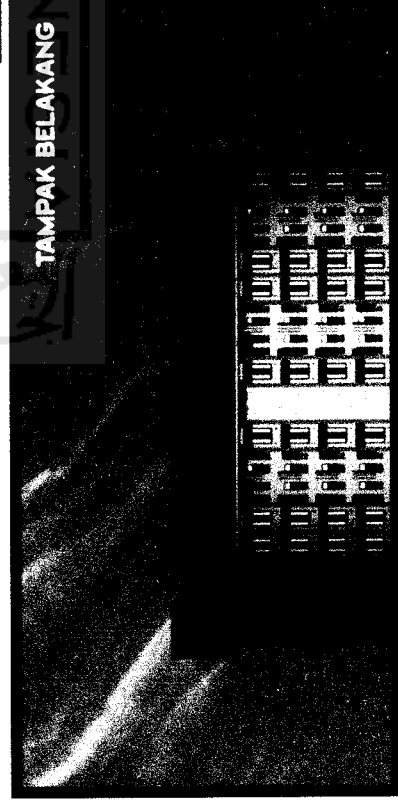
TAMPAK UNIT TYPE 36



TAMPAK DEPAN



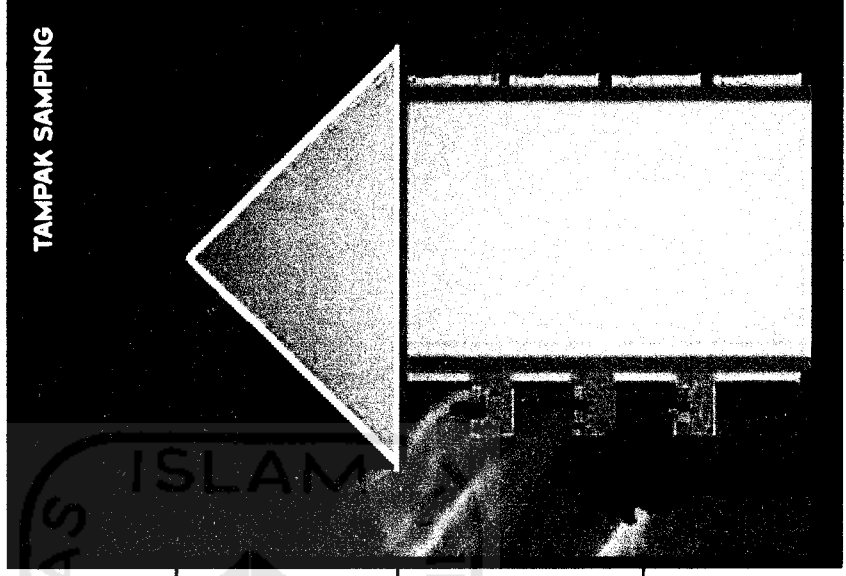
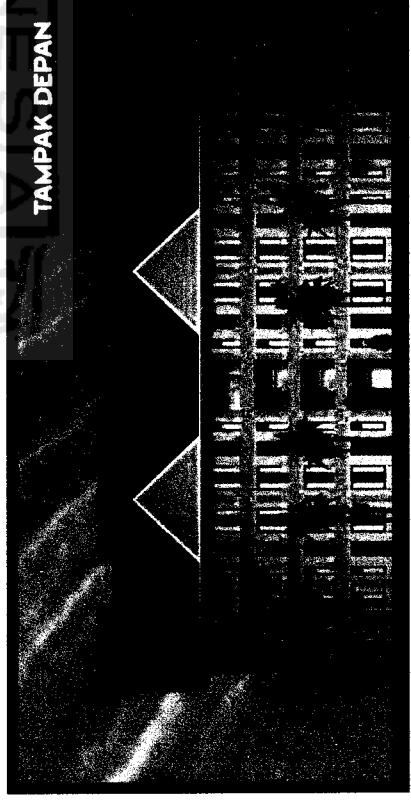
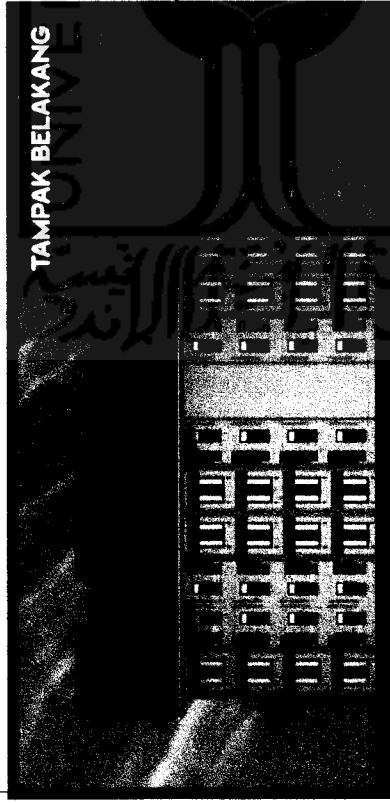
TAMPAK SAMPING



TAMPAK BELAKANG

DESIGN REPORT

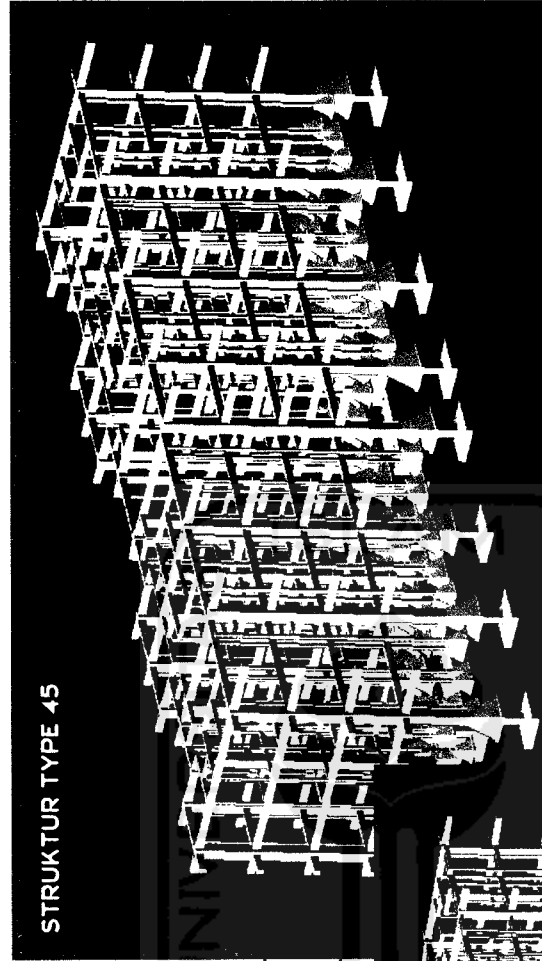
TAMPAK UNIT TYPE 45



DESIGN REPORT

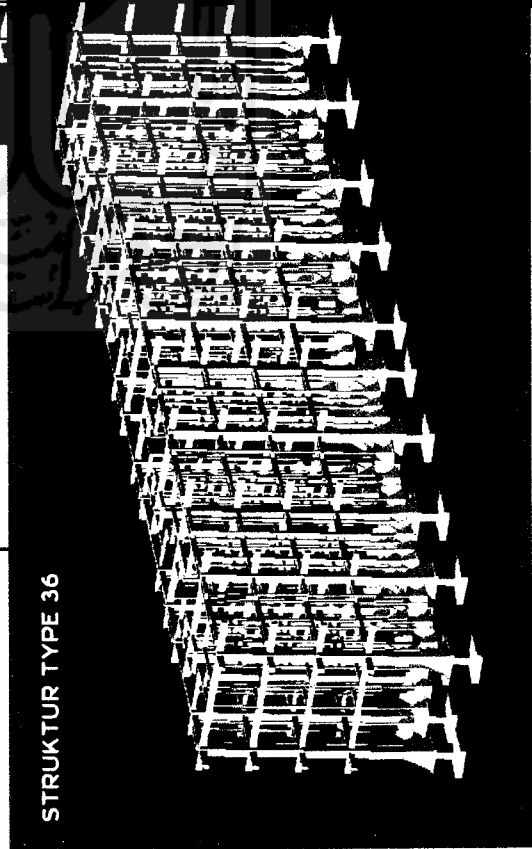
STRUKTUR

STRUKTUR TYPE 45



STRUKTUR

STRUKTUR TYPE 36



STRUKTUR TYPE 27



DESIGN REPORT

**TAMPAK BALAI KESEHATAN
DAN GEDUNG PERTEMUAN**

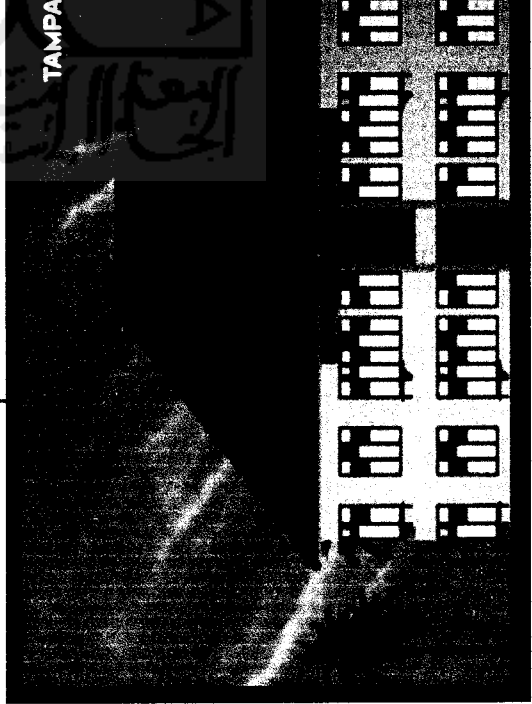


TAMPAK DEPAN



TAMPAK SAMPING

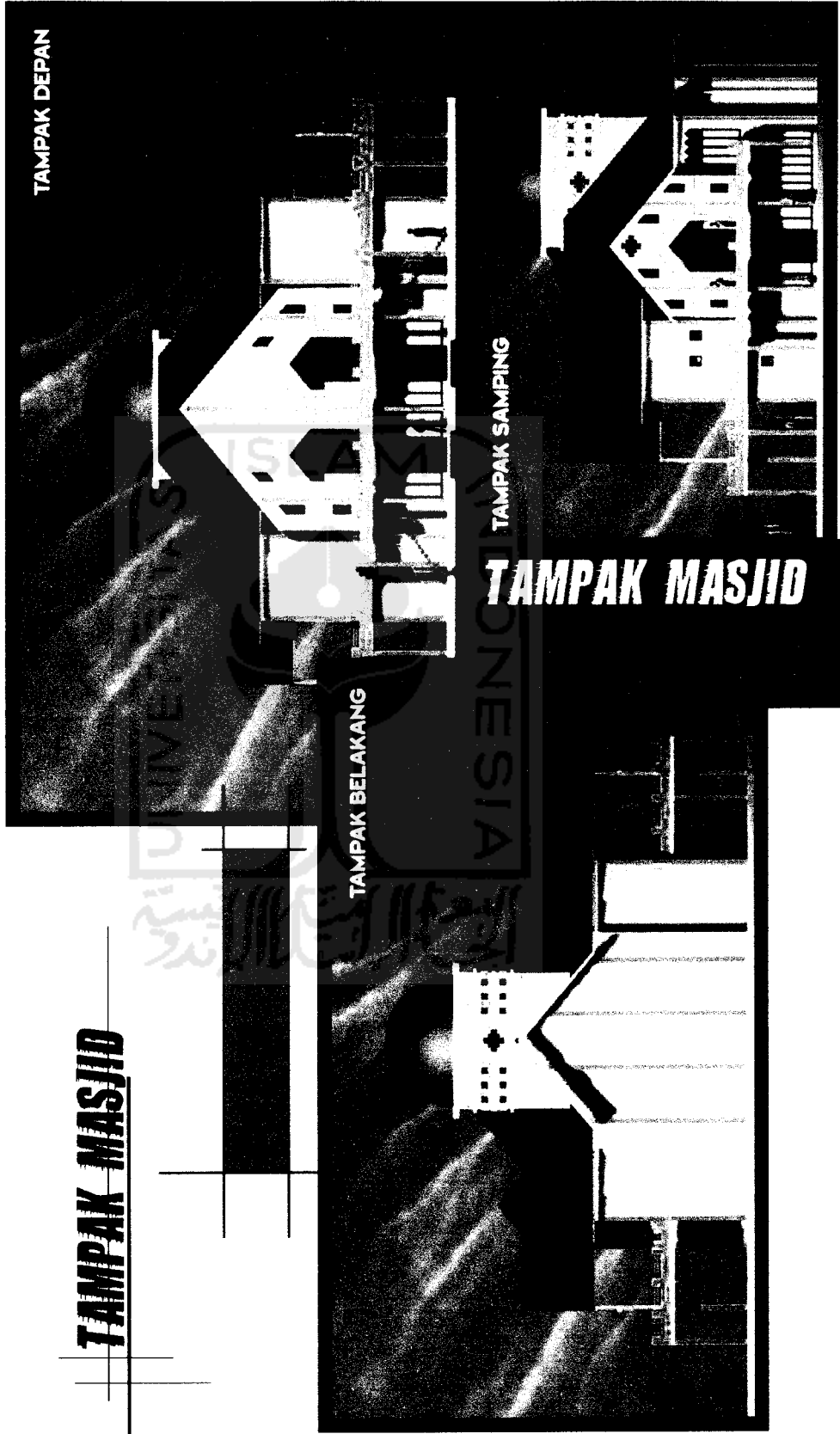
**TAMPAK BALAI KESEHATAN
DAN GEDUNG PERTEMUAN**



TAMPAK BELAKANG

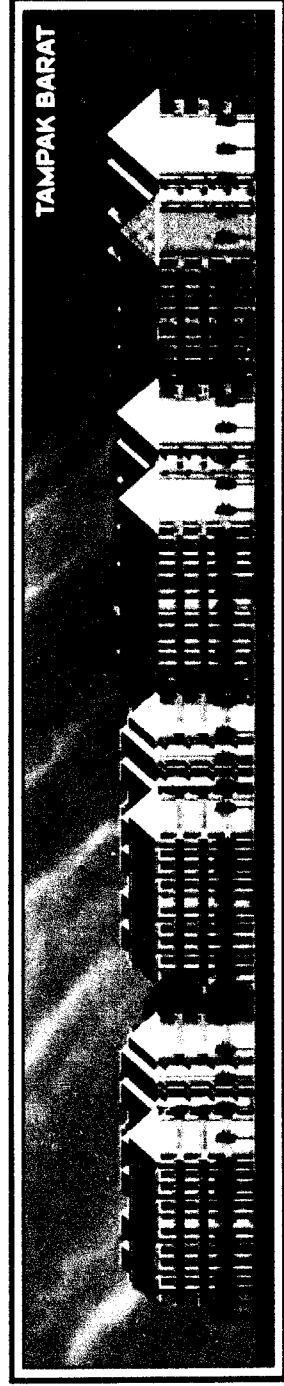
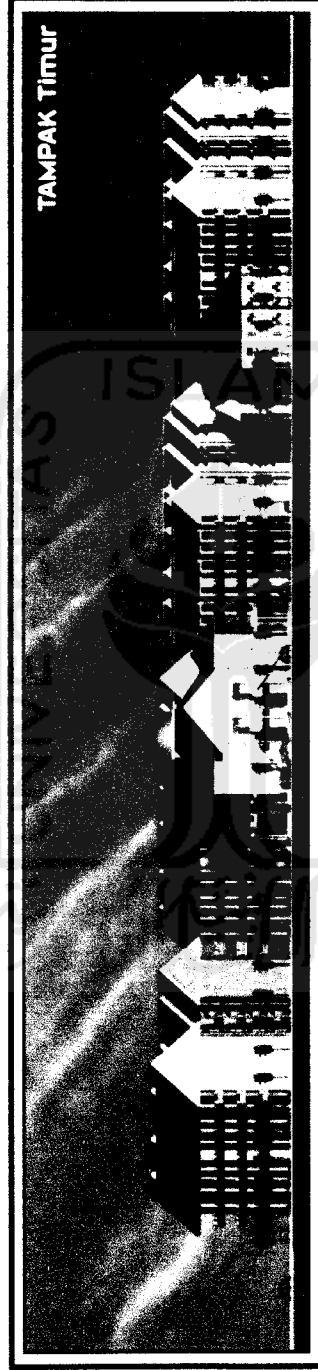
DESIGN REPORT

TAMPAK MASJID



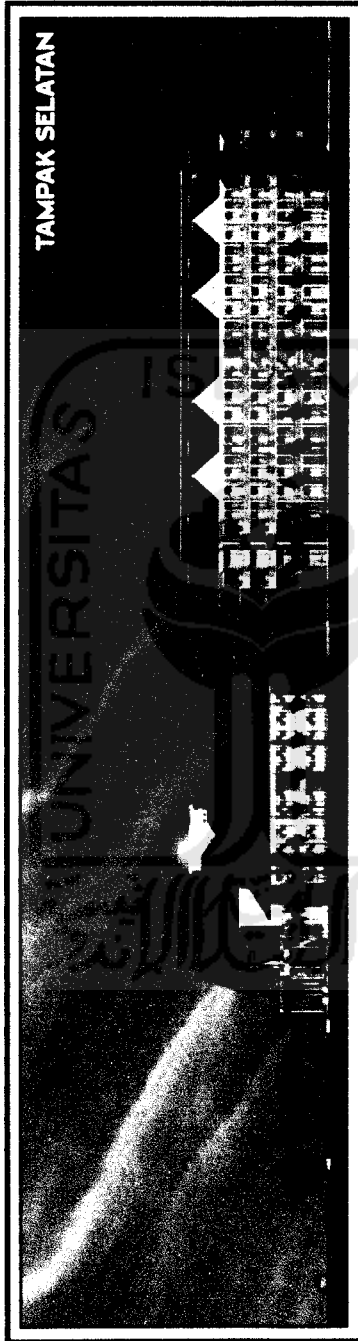
DESIGN REPORT

TAMPAK KAWASAN



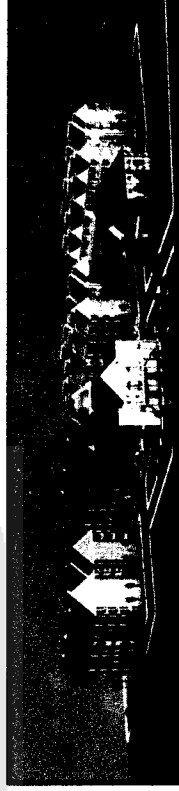
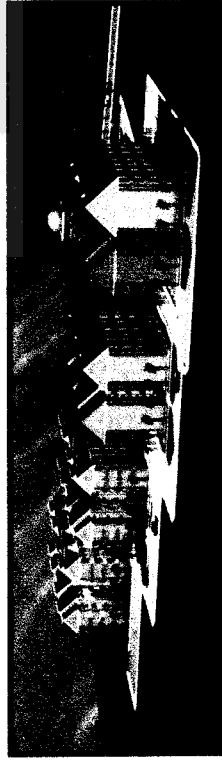
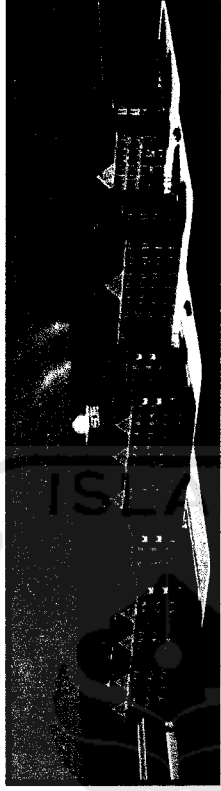
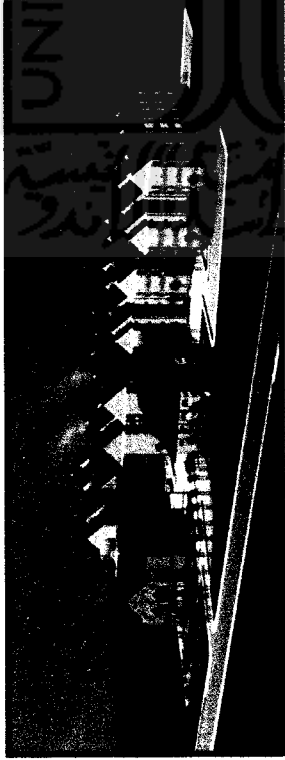
DESIGN REPORT

TAMPAK KAWASAN



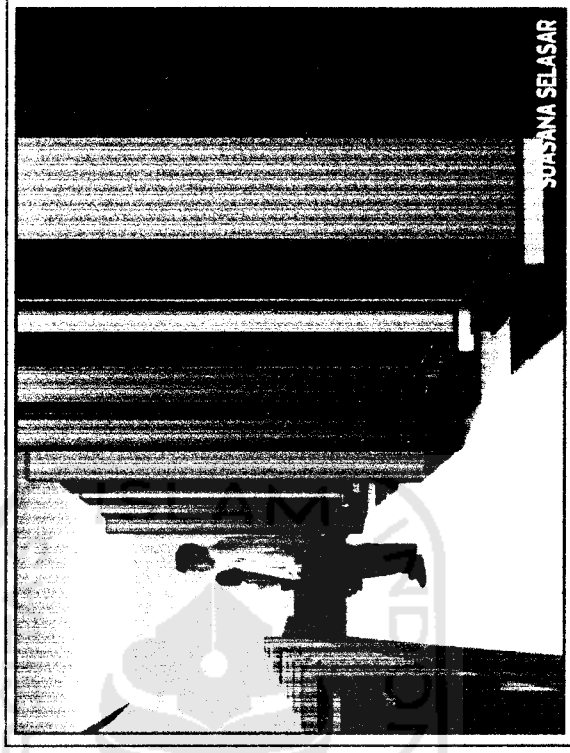
DESIGN REPORT

AXSONOMETRI KAWASAN





Adanya tritisan berguna sebagai penghalang masuknya air hujan dan secara tidak langsung berfungsi juga sebagai penghalang terhadap sinar matahari



Berfungsi sebagai tempat berinteraksi antar penghuni

FOTO MAKET



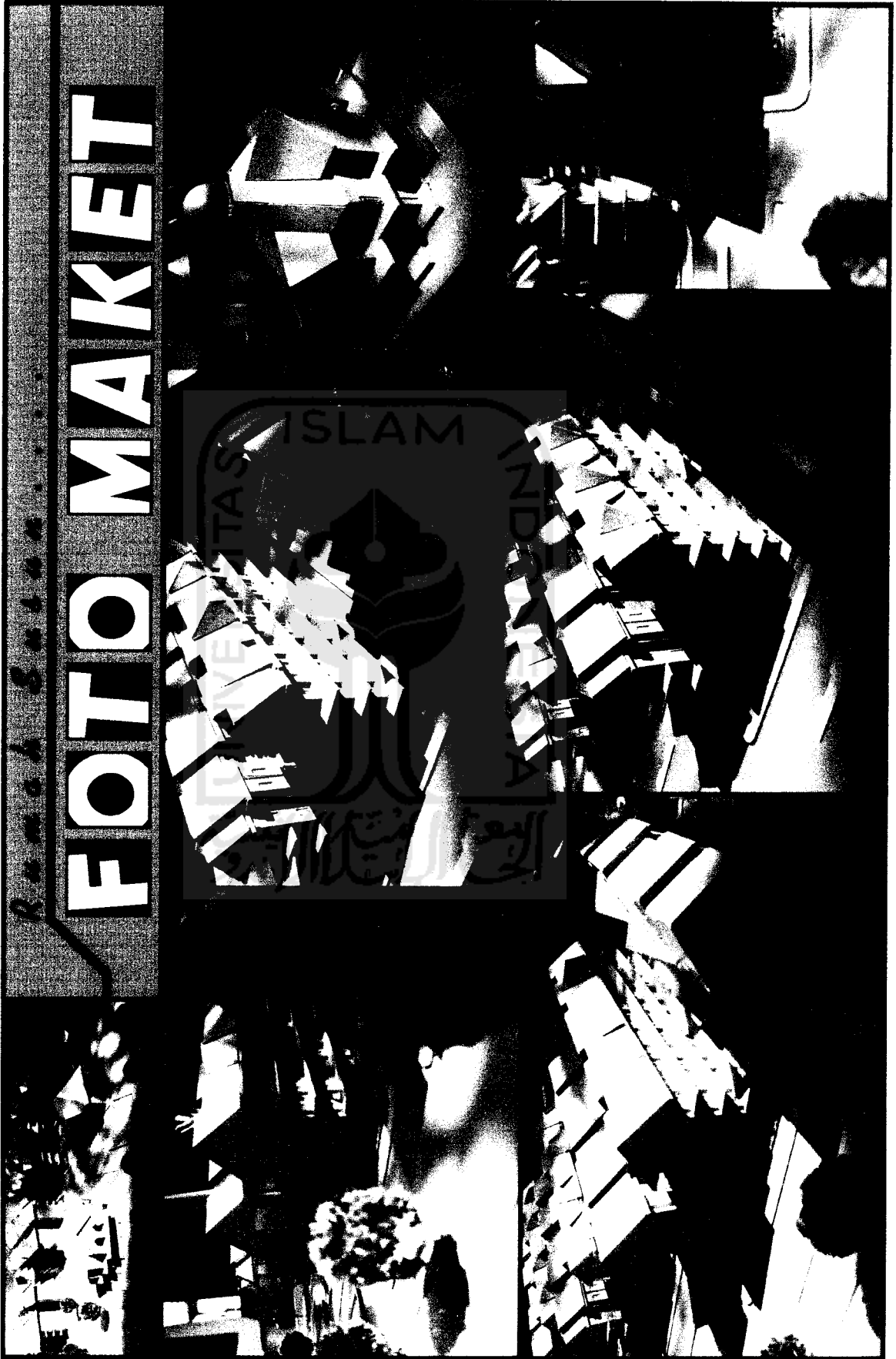


FOTO MAKET

Rencana & Desain

Pusat Sains

FOTO MAKET



Rumahnya Sistem

FOTO MAKET

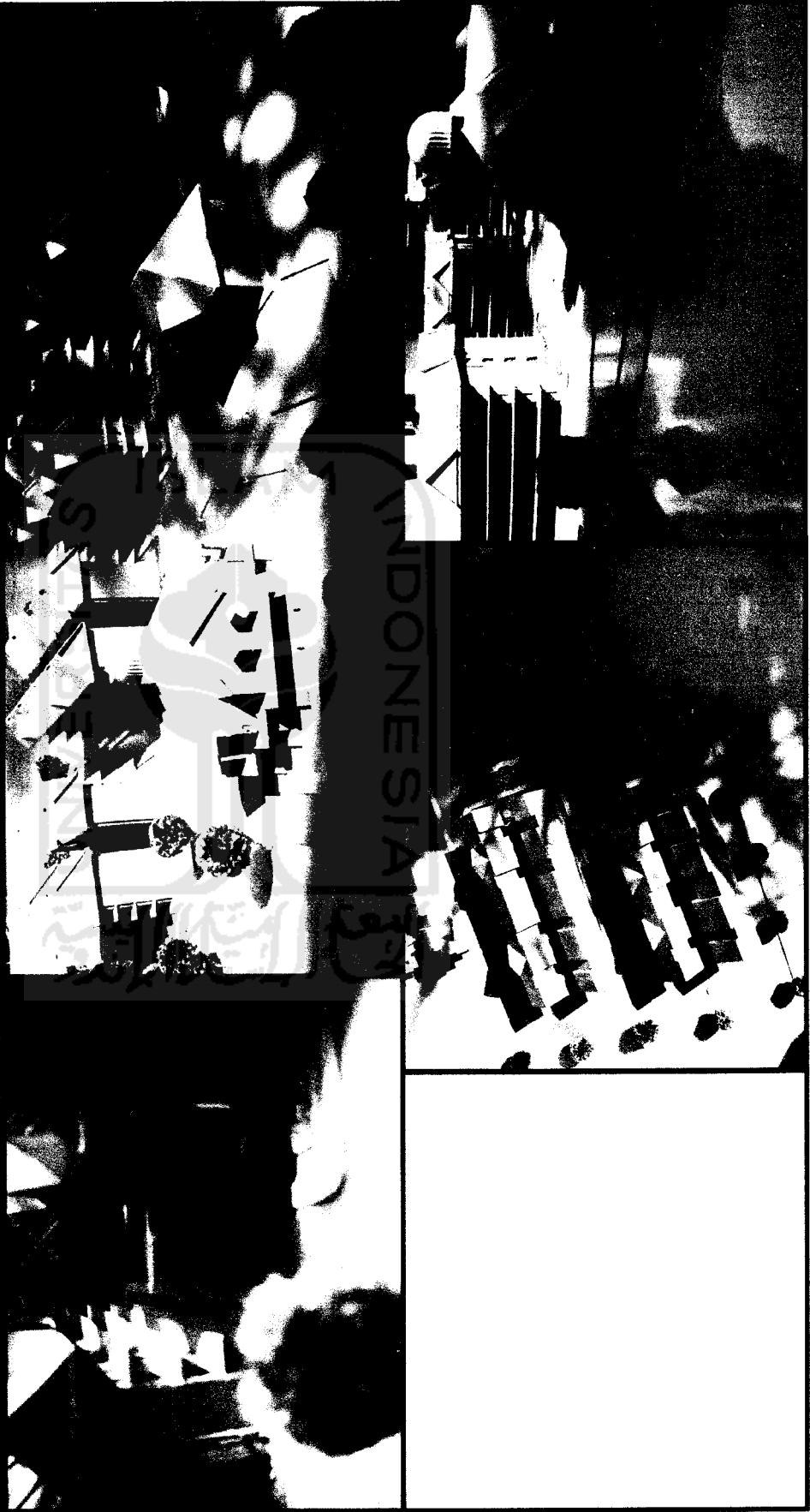


FOTO MAKET

