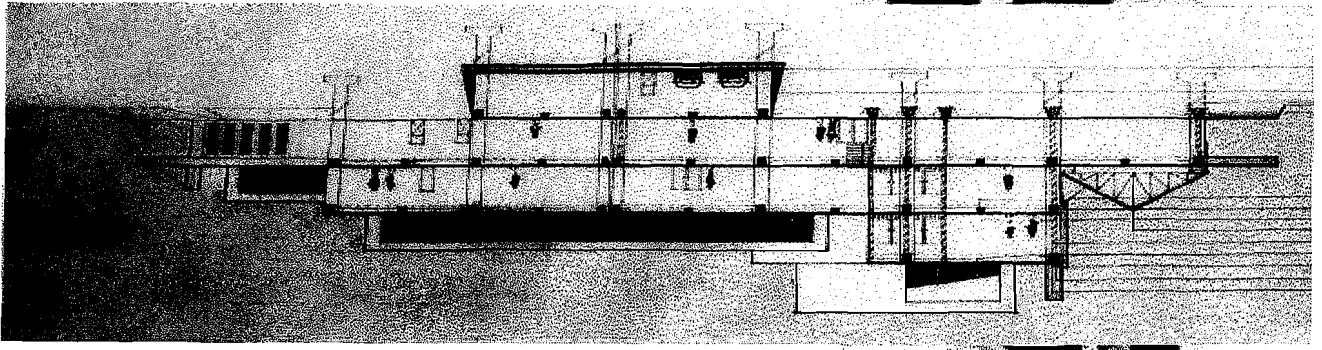




POTONGAN A-A

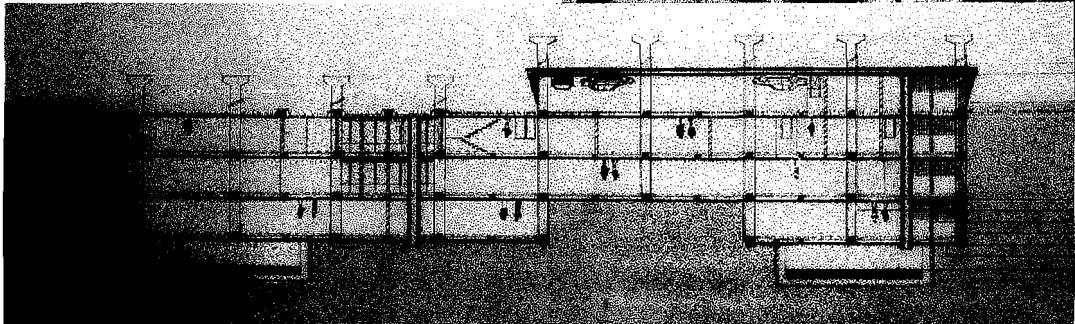




BUMAH MODE BOUTIQUE

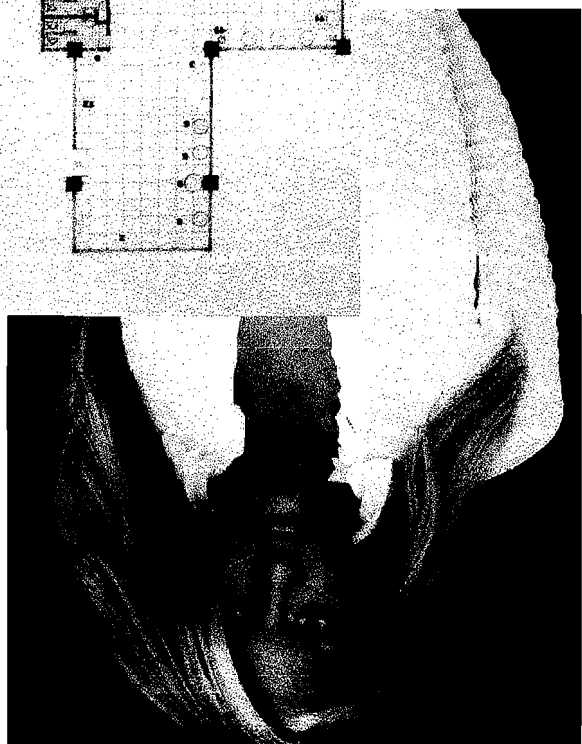
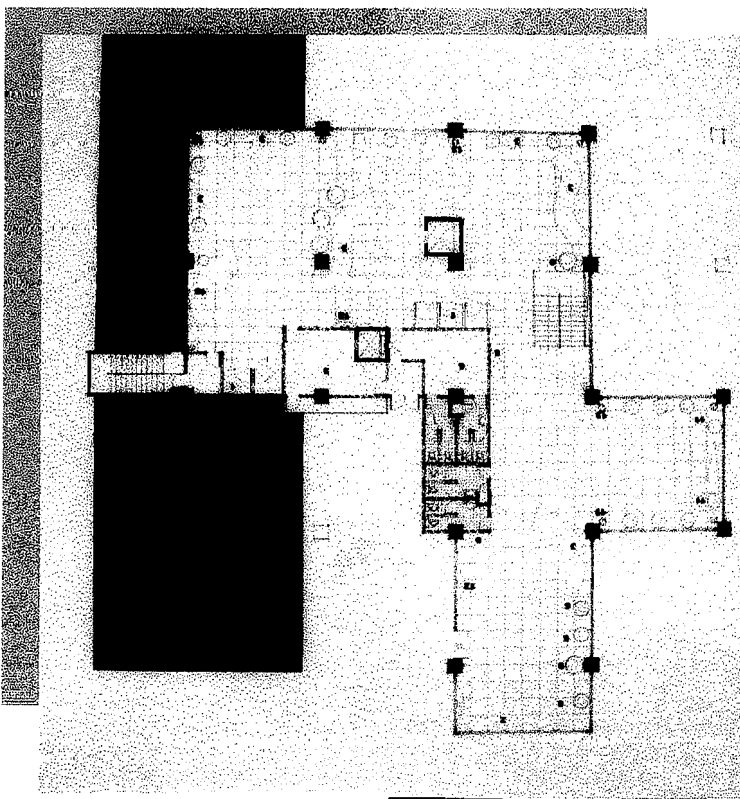


POTONGAN B-B



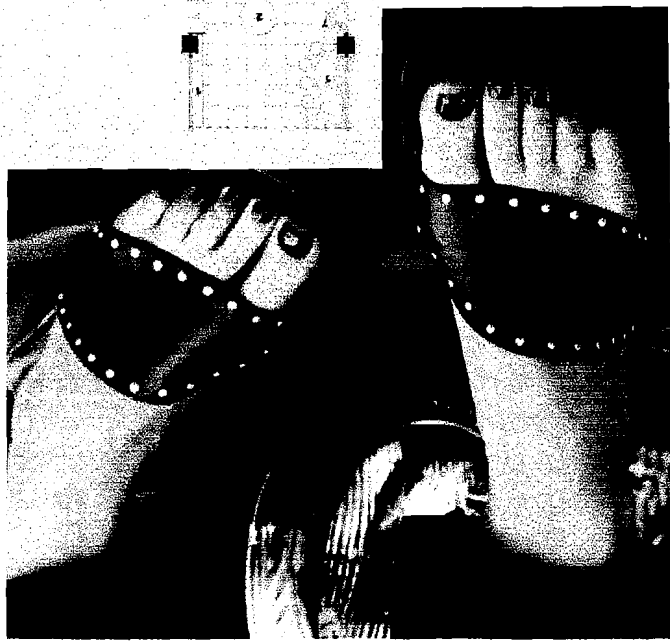
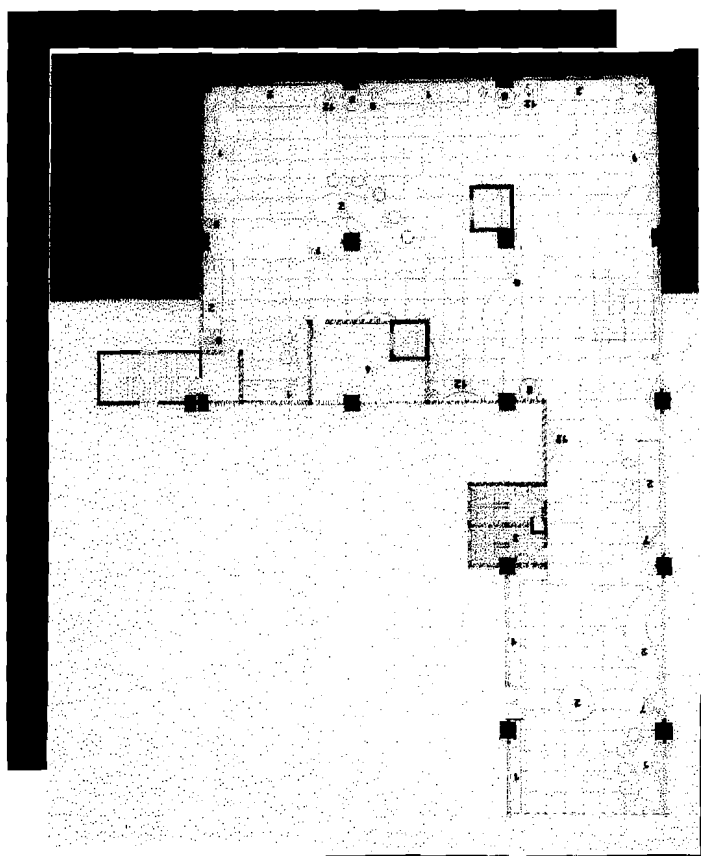
■ POTONGAN BANGUNAN

LAY OUT CLOTHING CORNER

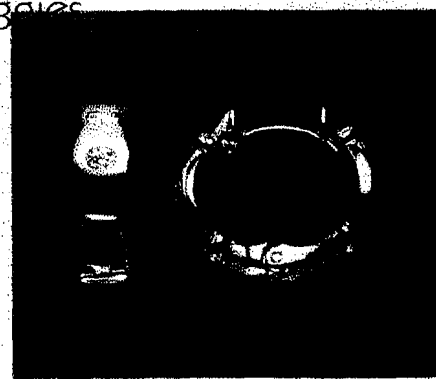
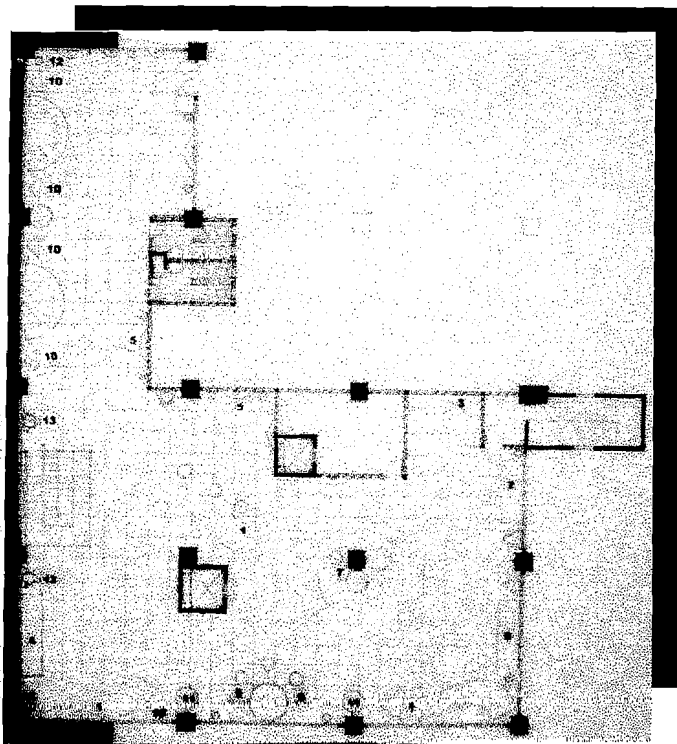
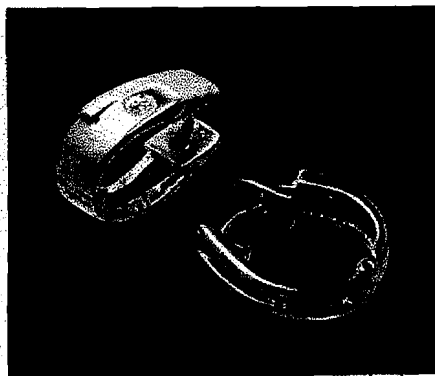


LAY OUT RUANG

SHOES AND BAGS CORNER



■ LAY OUT BOUTIQUE CORNER



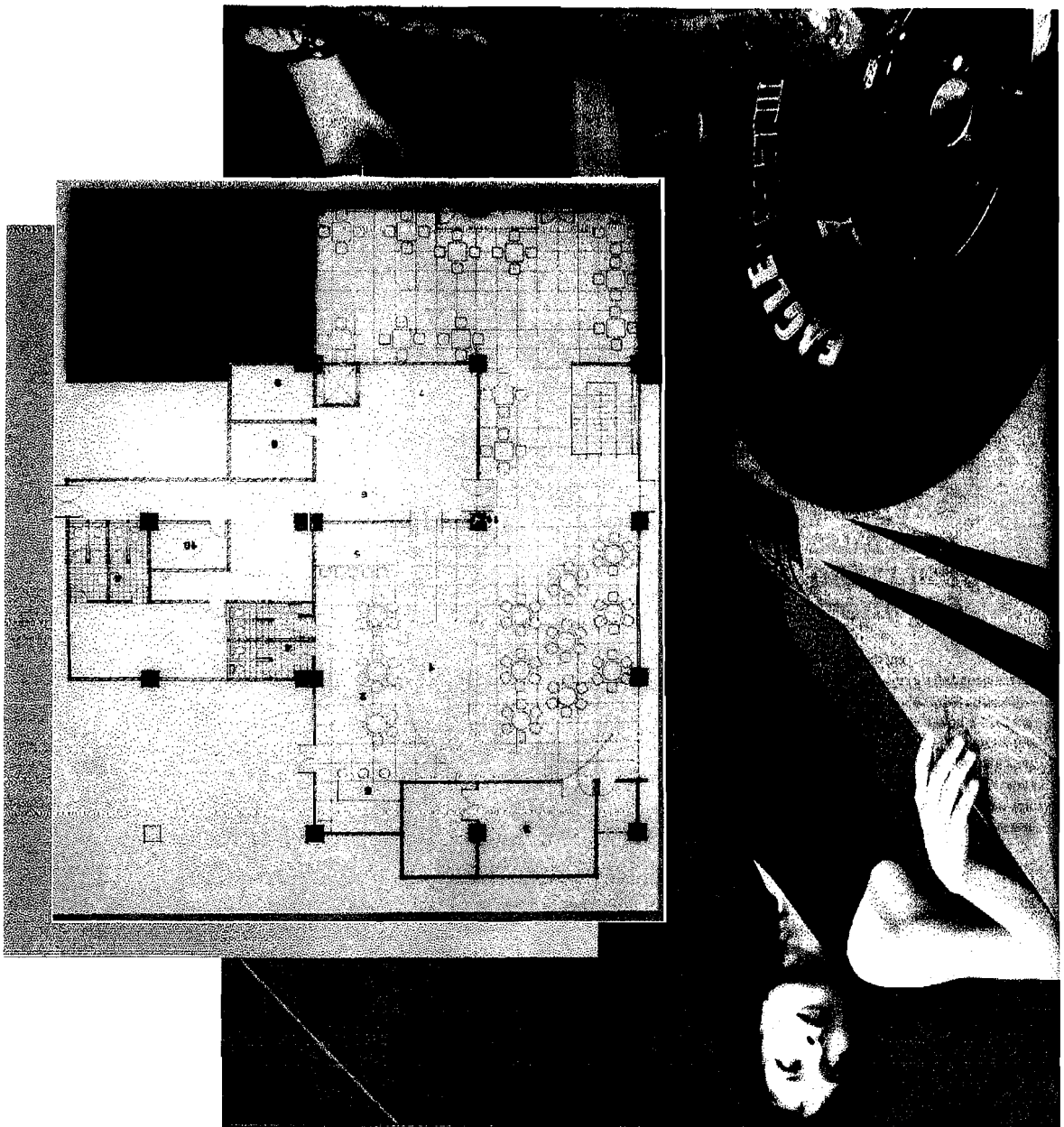
ACCESSORIES CORNER

RUMAH MODE BOUTIQUE





FASHION KAFE



■ LAY OUT RUANG

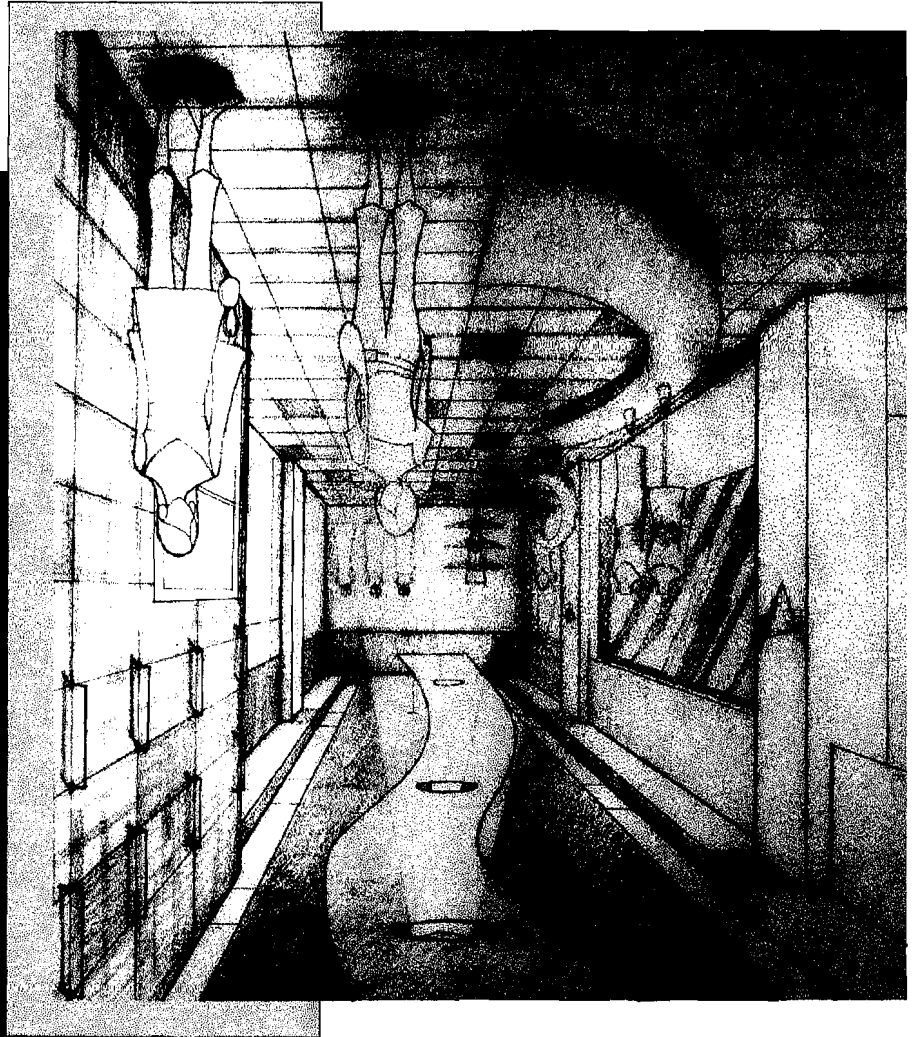
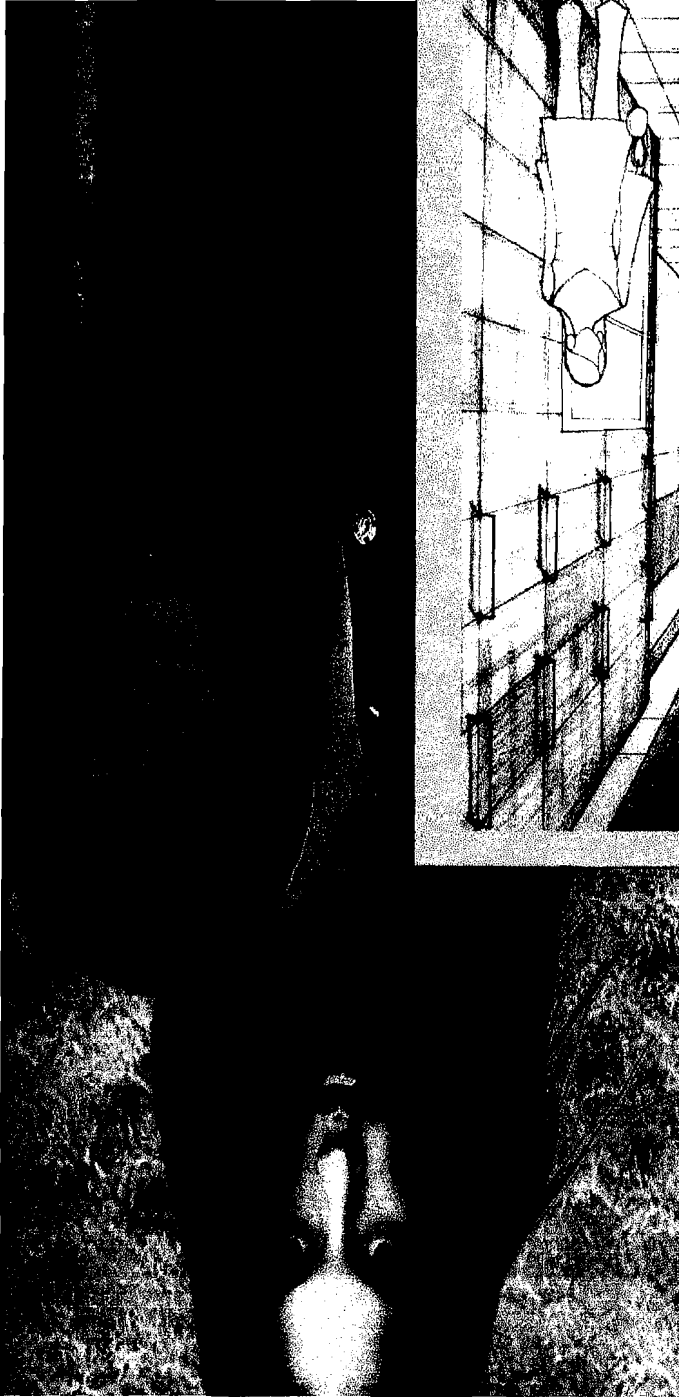
BUMAH MADE BEUTIQUE





RUMAH MODE BOUTIQUE

PERSPEKTIF INTERIOR

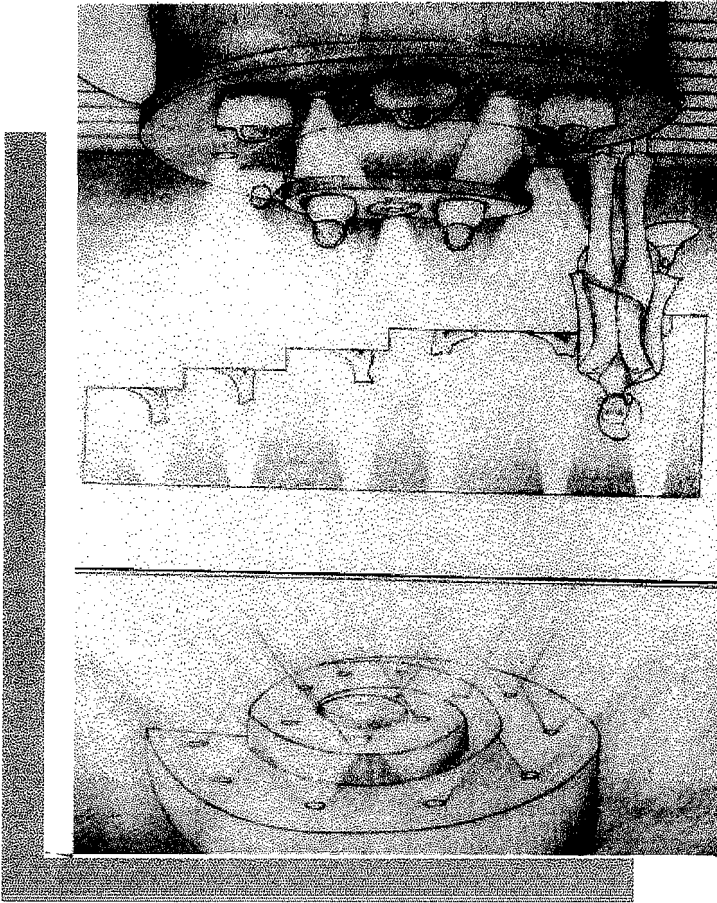


FASHION CORNER



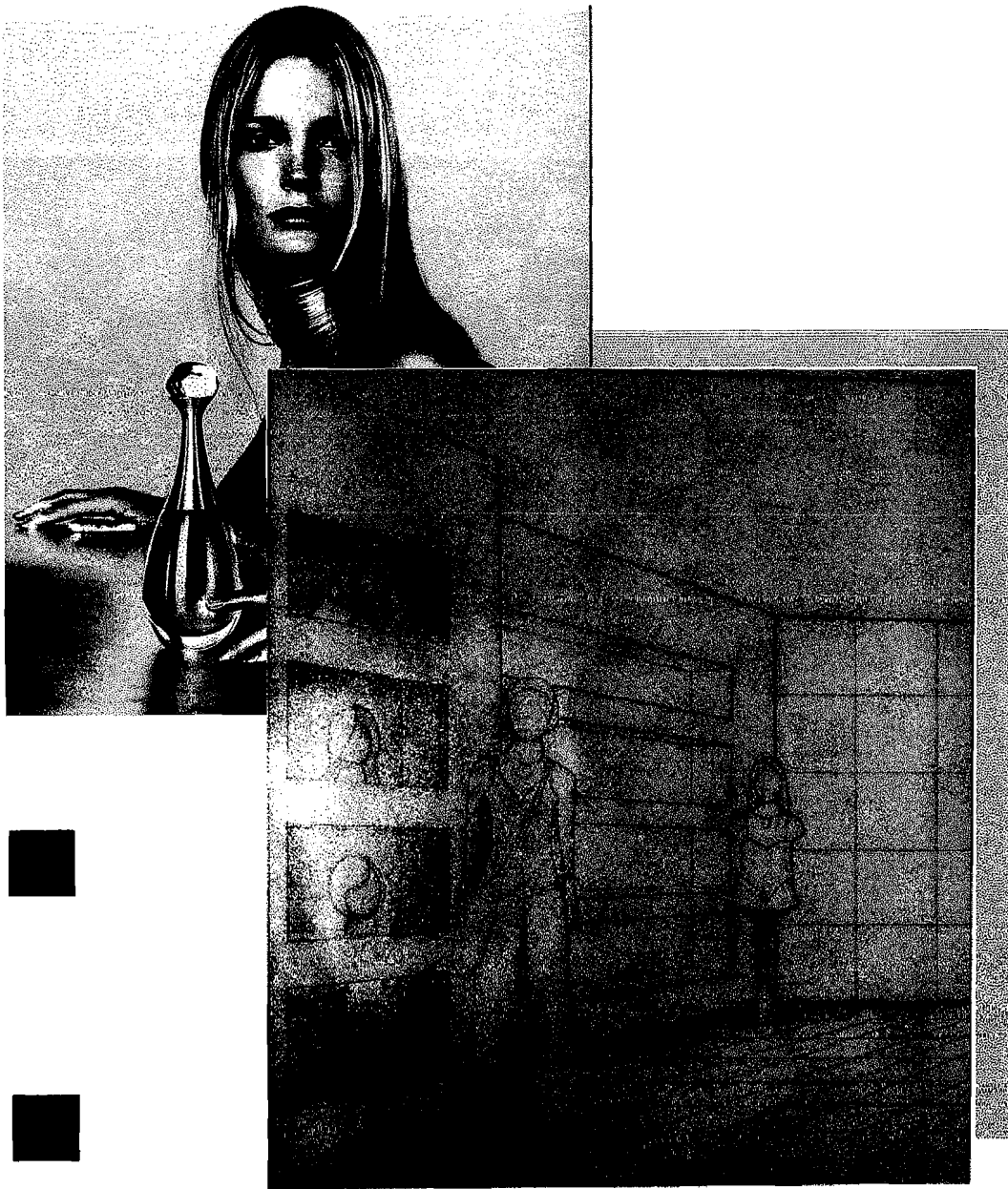
BUMAH MODE BOUTIQUE

SHOES AND BAGS CORNER



■ PERSPEKTIF INTERIOR

■ PERSPEKTIF INTERIOR

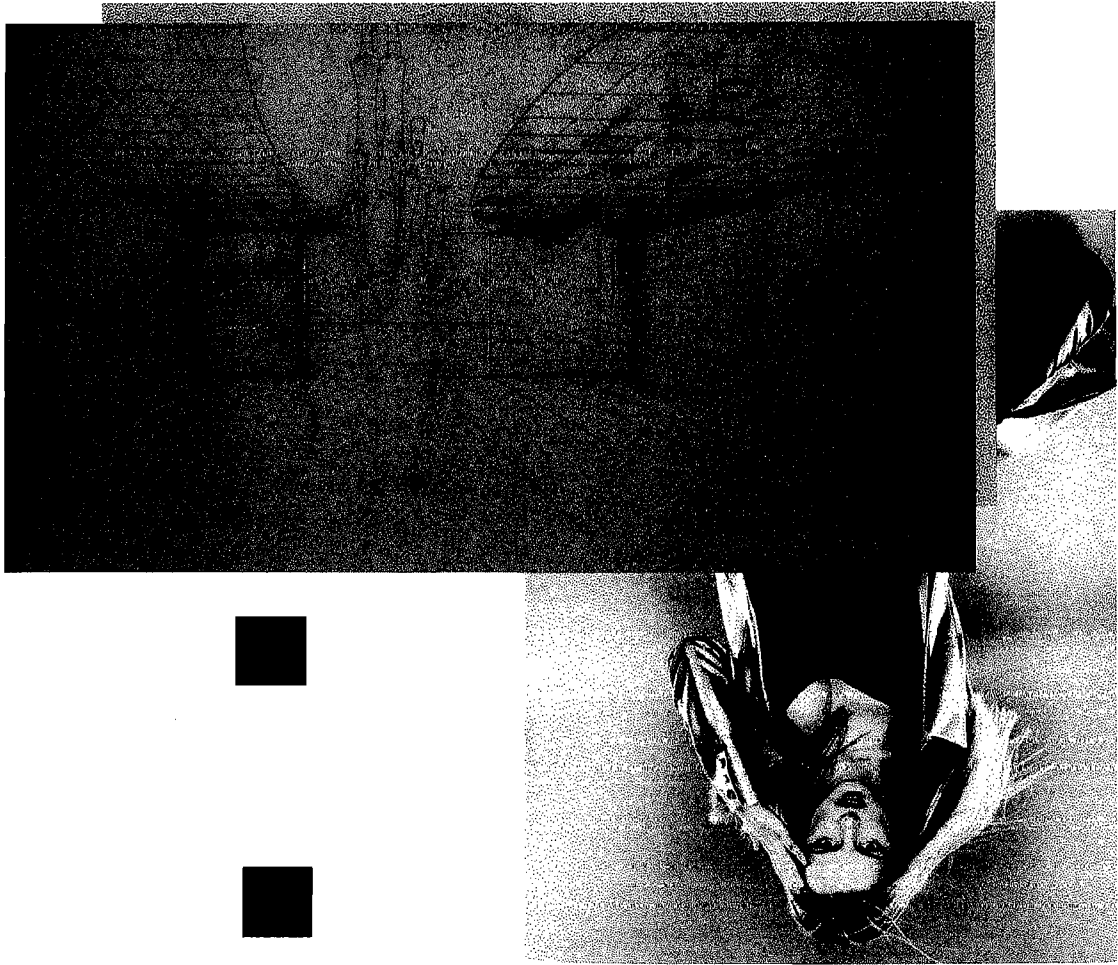


ACCESSORIES CORNER

RUMAH MODE BOUTIQUE



FASHION CAFE

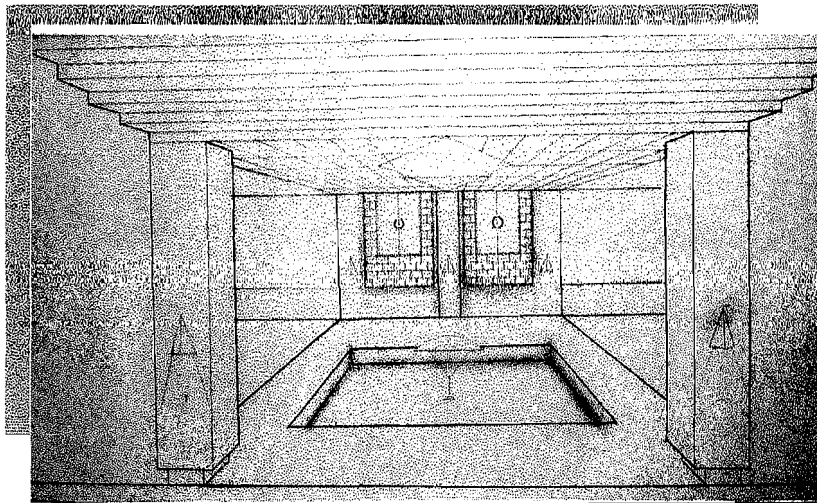


■ PERSPEKTIF INTERIOR



BUMAH MODE BEUTIQUE

MAIN ENTRANCE



■ PERSPEKTIF EXTERIOR

HARDWARE SCHEDULE

- **AREA BOUTIQUE CORNER**

- a. Ceiling :**

- Gypsum 1x1 m atau Eternit 1x1 m
 - Plafon gantung : - Model linier asimetris
 - Bahan fiber / plywood dengan finishing lapisan formika silver

- b. Wall :**

- Dinding ½ bata, cat warna abu-abu muda
 - Dinding kaca (10mm) bening
 - Dinding ½ bata, dilapis lempengan stainless stell (30x30cm)

- c. Floor :**

- Keramik (50x50cm), warna abu-abu muda, tekstur licin

- d. Lighting :**

- Spotlamp
 - Wall lamp
 - Downlight lamp
 - Hanging lamp

- e. Door :**

- Pintu kaca (10mm)
 - Handle model O bahan stainless steel

- f. Window :**

- Jendela kaca (10 mm)
 - Kusen aluminium

- g. Furniture :**

- Bahan kayu plywood dengan finishing lapisan formika silver

- f. AC :**

- Model sentral melalui Ceiling cassette.

- g. Soundsystem :**

- kontrol melalui operator

DAFTAR PUSTAKA

DK. CHING, Arsitektur bentuk, ruang dan susunannya

Contemporary asian architecture

Contemporary European architecture

Contemporary American architecture

www. fashion. com

www. catwalk. com

www. boutique. com