

DAFTAR PUSTAKA


1. Tjokrodimulyo, K. 1985. *Buku Ajar Teknologi Beton*. Jurusan Teknik Sipil Fakultas Teknik UGM, Yogyakarta.
2. Tjokrodimulyo, K. 1992. *Buku Ajar Bahan Bangunan*. Jurusan Teknik Sipil Fakultas Teknik UGM, Yogyakarta.
3. Murdock, L.J. and Brook, K.M. dan Hendarko, S. 1979. *Bahan dan Fraktek Beton*. Erlangga, Jakarta.
4. Kusuma, G. H. 1993. *Pedoman Pengerjaan Beton Berdasar SK- SNI T-15-1991-03*. Erlangga, Jakarta.
5. Singh, S. 1992 (5th Revised Edition). *Engineering Materials*. A-149, Main Vikas Marg, Delhi.
6. Gunawan A, Y. dan Yacob, Y. 1987. *Penuntun Praktis Praktikum Pada Laboratorium Teknik Sipil*. Intermedia, Jakarta.
7. Antono. A. 1985. *Diktat Teknologi Beton I*. Jurusan Teknik Sipil Fakultas Teknik UGM, Yogyakarta.
8. Departemen Pekerjaan Umum. 1990. *Metode Pengujian Kekuatan Tekan Mortar Semen Portland Untuk Pekerjaan Sipil, standar SKSNI M-111-1990-03*. Yayasan Badan Penerbit Pekerjaan Umum, Jakarta.
9. Departemen Pekerjaan Umum dan Tenaga Listrik. 1971. *Peraturan Beton Bertulang Indonesia NI-02*. Direktorat Penyelidikan Masalah Bangunan, Ditjen Cipta Karya. Bandung.
10. Merritt. Frederick S. 1965. *Building Construction Handbook, Second Edition*. Mc Graw-Hill Book Company
11. Departemen Pekerjaan Umum dan Tenaga listrik. 1982. *Peryaratan Umum Bahan Bangunan di Indonesia 1982*. Direktorat Penyelidikan Masalah Bangunan, Ditjend. cipta Karya. Bandung.


LAMPIRAN


NOVEMBER


K	1	2	3	4	5	6	7	8
2	3	4	5	6	7	8	9	0
U 21								
		U 28	U 28					
O 28								
D 21	U 21	O 28	D 28	U 28				
U 14								
	D 21	U 21	O 28	D 28	U 28			
O 21								
D 14	U 14				U 21			
		O 21	D 21			D 28	U 28	

KETERANGAN

 Cetak 26 hari

 Cetak 21 hari

 Cetak 14 hari

 Cetak 7 hari

O masuk oven

D masuk desikator

U pengujian

7
 14
 21
 28

} umur bahan uji



Tabel L.1. Kuat Tekan Mortar Uji Umur 7 hari.

kode bahan uji	No.	Berat (gram)	dimensi (cm)			{A} luas bidang tertekan (cm ²)	{F} gaya tekan (kg)	$\sigma = \frac{[F]}{[A]}$ (kg/cm ²)	$\bar{\sigma}$ rata-rata (kg/cm ²)
			I A	1	750,10	6,955	7,083	7,210	49,2629
2	720,00	7,028	7,020	6,985	50,6016	8850	174,8957		
3	715,90	7,135	7,188	7,045	51,2864	7875	153,5495		
4	710,70	7,045	7,048	7,278	49,8532	6600	132,9219		
5	715,30	6,988	7,135	7,055	49,8592	7275	145,9109		
I B	1	778,50	7,195	7,118	7,260	51,2140	7625	148,8851	142,4663
2	745,80	7,155	6,960	7,148	49,7988	6775	136,0475		
3	732,50	7,155	7,070	7,320	50,5859	5650	111,6912		
4	739,80	7,178	7,115	7,285	51,0715	6500	127,2725		
5	729,40	7,205	6,935	7,280	49,9667	5495	109,9731		
I C	1	734,50	7,268	7,215	7,210	52,4386	7700	146,8384	153,3950
2	737,80	7,280	7,208	7,220	52,4742	8450	161,0315		
3	733,60	7,155	7,050	7,100	50,4428	6975	138,2754		
4	730,40	7,095	7,105	7,263	50,4100	5500	109,1053		
5	731,70	7,138	7,108	7,178	50,7369	5740	113,1327		
I D	1	730,30	7,090	7,058	7,090	50,0412	6275	125,3967	136,9672
2	730,60	7,060	6,985	7,050	49,3141	7325	148,5376		
3	739,80	7,180	7,090	7,088	50,9062	8750	171,8848		
4	735,60	7,070	7,038	7,053	49,7587	7000	140,6789		
5	737,40	7,095	7,093	7,020	50,3248	8000	158,9673		
I E	1	725,30	6,968	6,978	7,200	49,8909	5100	102,2231	128,0027
2	744,20	7,010	7,050	6,995	49,4205	7600	153,7823		
3	720,90	7,040	7,005	7,143	49,3152	4700	95,3053		
4	736,30	7,025	7,230	7,240	50,7908	6250	123,0538		
5	729,20	7,163	7,090	7,138	50,7857	5500	108,2982		



Kuat Tekan Mortar Uji Umur 7 hari (sambungan).

kode bahan uji	No.	Berat (gram)	dimensi (cm)			[A] luas bidang tertekan (cm ²)	[F] gaya tekan (kg)	$\sigma = \frac{[F]}{[A]}$ (kg/cm ²)	σ rata-rata (kg/cm ²)
II A	1	719,80	7,168	6,978	7,200	50,0183	5325	106,4640	109,0489
	2	720,10	7,120	6,995	7,198	49,8044	5560	111,6360	
	3	753,60	7,045	7,160	7,170	50,4422	4740	93,9689	
	4	734,30	7,120	6,960	6,990	49,5552	2820	56,9062	
	5	755,80	7,155	7,099	7,065	50,7933	3625	71,3676	
II B	1	746,20	7,143	7,188	6,958	51,3439	6800	132,4403	116,1508
	2	753,30	7,083	7,175	7,035	50,8205	5075	99,8613	
	3	771,40	6,958	7,040	7,158	48,9843	4275	87,2729	
	4	775,40	7,050	7,105	6,945	50,0903	3450	68,8756	
	5	775,20	7,075	7,070	7,163	50,0203	5225	104,4576	
II C	1	750,10	7,215	7,183	7,193	51,8253	6275	121,0799	116,3637
	2	752,70	7,168	7,060	7,193	50,6061	5650	111,6466	
	3	787,50	7,245	7,045	7,100	51,0410	5620	110,1076	
	4	785,50	7,148	7,168	7,005	51,2369	4800	93,6825	
	5	778,10	6,980	7,245	6,988	50,5701	4400	87,0079	
II D	1	721,00	7,110	7,125	7,018	50,6588	5820	114,8863	108,6702
	2	723,90	7,093	7,073	7,065	50,1688	5140	102,4541	
	3	769,50	7,075	7,135	7,088	50,4801	4930	97,6622	
	4	781,60	7,077	7,155	7,120	50,6359	5480	108,2236	
	5	784,70	7,143	7,175	7,102	51,2510	4670	91,1202	
II E	1	712,10	7,118	7,018	7,150	49,9541	5650	113,0738	108,0351
	2	715,30	6,995	7,185	6,560	50,2591	5175	102,9664	
	3	761,30	7,070	7,355	7,133	51,9999	4910	94,4233	
	4	733,70	7,100	7,070	7,003	50,1970	4150	82,6743	
	5	776,10	7,180	7,340	7,060	52,7012	4810	91,2693	

Kuat Tekan Mortar Uji Umur 7 hari (sambungan).

kode bahan uji	No.	Berat (gram)	dimensi (cm)			[A] luas bidang tertekan (cm ²)	[F] gaya tekan (kg)	$\sigma = \frac{[F]}{[A]}$ (kg/cm ²)	$\bar{\sigma}$ rata-rata (kg/cm ²)
III A	1	719,80	6,960	7,120	7,070	49,5552	2840	57,3098	57,9040
	2	697,40	7,010	6,950	7,000	48,7195	2850	58,4981	
	3	737,60	6,990	6,930	7,080	48,4470	2260	46,6550	42,4232
	4	759,10	7,170	7,075	7,145	50,7278	2010	39,6232	
	5	746,70	6,975	7,135	7,060	49,7666	2040	40,9913	
III B	1	756,10	7,225	7,170	7,110	51,8033	3380	65,2461	71,1406
	2	755,00	7,040	7,265	7,140	51,1456	3940	77,0350	
	3	784,20	7,130	7,120	7,115	50,7656	2300	45,3063	45,0384
	4	785,60	6,955	7,195	7,145	50,0412	2420	48,3602	
	5	763,20	6,800	7,025	7,195	47,7700	1980	41,4486	
III C	1	733,70	7,000	7,070	7,180	49,4900	4380	88,5027	77,9562
	2	734,30	7,075	7,080	7,070	50,0910	3720	74,2648	
	3	771,60	7,190	6,975	7,105	50,1503	2950	58,8232	56,9504
	4	760,10	7,220	7,080	6,975	51,1176	2950	57,7101	
	5	746,30	7,102	7,025	7,095	49,8916	2710	54,3178	
III D	1	719,80	7,098	7,075	7,103	50,2184	3870	77,0634	82,5388
	2	718,00	6,918	7,020	7,045	48,5644	4760	98,0142	
	3	748,10	7,100	7,020	7,040	49,8420	3050	61,1934	61,5006
	4	760,10	7,120	6,915	7,120	49,2348	3050	61,9481	
	5	771,90	7,130	7,040	7,125	50,1952	3080	61,3604	
III E	1	709,10	7,000	6,980	7,135	48,8600	4300	88,0065	83,5882
	2	718,90	7,190	7,150	7,060	51,4085	4070	79,1698	
	3	767,80	7,093	7,198	7,045	51,0554	3560	69,7282	59,2780
	4	740,80	7,085	7,048	6,943	49,9351	3410	68,2886	
	5	772,30	7,188	6,988	7,220	50,2297	2000	39,8171	

Kuat Tekan Mortar Uji Umur 7 hari (sambungan).

kode bahan uji	No.	Berat (gram)	dimensi (cm)			[A] luas bidang tertekan (cm ²)	[F] gaya tekan (kg)	$\sigma = \frac{[F]}{[A]}$ (kg/cm ²)	σ rata-rata (kg/cm ²)
IV A	1	706,30	6,965	7,060	7,065	49,1729	1900	38,6392	39,9915
	2	688,50	6,950	7,030	7,100	48,8585	2020	41,3439	
	3	730,20	7,030	7,015	7,090	49,3155	1470	29,4834	
	4	736,10	7,030	7,010	7,150	49,2803	1740	35,3082	
	5	741,30	7,060	7,200	7,000	50,8320	1630	32,0664	
IV B	1	723,00	7,200	7,070	7,160	50,9040	1625	31,9228	39,0325
	2	707,70	7,068	7,083	7,125	50,0626	2310	46,1422	
	3	756,80	7,070	6,975	7,130	49,3133	1710	34,6763	
	4	767,30	7,210	7,090	6,975	51,1189	1820	35,6033	
	5	740,40	6,970	7,015	7,170	48,8946	1450	29,6556	
IV C	1	738,60	7,250	7,185	6,985	52,0913	2680	51,4482	57,1307
	2	717,90	7,110	7,210	7,045	51,2631	3220	62,8132	
	3	776,30	7,125	7,250	7,090	51,6563	1910	36,9752	
	4	798,30	7,200	7,230	7,100	52,0560	1980	38,0360	
	5	788,40	7,130	7,245	7,140	51,6569	2380	46,0732	
IV D	1	708,30	7,000	7,025	7,075	49,1750	2370	48,1952	48,6620
	2	707,30	7,090	7,005	7,050	49,6655	2440	49,1287	
	3	756,30	7,130	7,030	7,090	50,1239	1900	37,9061	
	4	770,30	7,100	7,135	7,130	50,6585	1900	37,5060	
	5	756,70	7,020	7,160	7,120	50,2632	1810	36,0104	
IV E	1	726,00	7,078	7,210	7,020	51,0324	3040	59,5700	50,5736
	2	734,70	7,075	7,275	7,165	51,4706	2140	41,5771	
	3	760,80	7,125	7,220	7,090	51,4425	2020	39,2671	
	4	764,20	7,075	7,170	7,050	50,7278	2000	39,4291	
	5	759,60	6,980	7,270	7,185	50,7446	1300	25,6185	

Tabel L.2. Kuat Tekan Mortar Uji Umur 14 hari.

kode bahan uji	No.	Berat (gram)	dimensi (cm)			[A] luas bidang tertekan (cm ²)	[F] gaya tekan (kg)	$\sigma = \frac{[F]}{[A]}$ (kg/cm ²)	$\bar{\sigma}$ rata-rata (kg/cm ²)
I A	1	738,20	7,155	7,040	7,125	50,3712	8675	172,2214	201,2071
	2	759,90	7,090	6,985	7,095	49,5237	11400	230,1928	
	3	782,00	7,125	6,965	7,080	49,6256	8075	162,7164	185,3381
	4	785,10	7,025	7,170	7,105	50,3693	9925	197,0446	
	5	762,30	7,105	7,100	7,045	50,4455	9900	196,2514	
I B	1	779,70	7,100	7,180	7,130	50,9780	8725	171,1523	198,5686
	2	781,10	7,115	7,230	7,035	51,4415	11625	225,9849	
	3	796,10	6,970	7,110	7,198	49,5567	7500	151,3418	192,5364
	4	819,50	7,225	7,175	7,123	51,8394	11850	228,5906	
	5	794,00	7,120	7,105	6,975	50,5876	10000	197,6769	
I C	1	752,60	7,165	7,045	7,140	50,4774	6875	136,1996	183,4788
	2	756,70	7,050	7,115	7,155	50,1608	11575	230,7579	
	3	800,30	7,120	7,190	7,155	51,1928	12125	236,8497	227,0675
	4	803,60	7,090	7,155	7,150	50,7290	11100	218,8098	
	5	797,40	7,120	6,990	7,215	49,7688	11225	225,5429	
I D	1	738,90	7,030	7,070	7,110	49,7021	9525	191,6418	209,1462
	2	742,30	7,055	7,145	7,115	50,4080	11425	226,6505	
	3	777,20	7,055	7,025	7,130	49,5614	10425	210,3451	190,9017
	4	768,70	6,920	7,020	7,070	485784	8650	178,0627	
	5	771,50	7,100	7,050	7,085	50,0550	9225	184,2973	
I E	1	739,50	7,235	6,950	7,010	50,2833	10650	211,7949	201,6432
	2	765,20	7,345	7,110	7,035	52,2230	10000	191,4865	
	3	777,70	6,995	7,090	7,130	49,5946	8675	174,9183	152,3199
	4	769,60	7,080	7,265	6,910	51,4362	7750	150,6721	
	5	791,90	7,065	7,165	7,160	50,6207	6650	131,3692	

Kuat Tekan Mortar Uji Umur 14 hari (sambungan).

Kode bahan uji	No.	Berat (gram)	dimensi (cm)			[A] luas bidang tertekan (cm ²)	[F] gaya tekan (kg)	$\sigma = \frac{[F]}{[A]}$ (kg/cm ²)	$\bar{\sigma}$ rata-rata (kg/cm ²)
II A	1	735,80	7,155	6,945	7,065	49,6915	8100	163,0058	156,9367
	2	746,60	7,145	7,120	6,960	50,8724	7675	150,8677	
	3	786,60	7,180	7,020	7,200	50,4036	6700	132,9270	131,8181
	4	764,10	6,965	7,000	6,985	48,7550	5525	113,3217	
	5	778,30	7,060	6,930	7,125	48,9258	7300	149,2055	
II B	1	765,60	7,255	7,085	7,075	51,4017	7175	139,5869	138,9441
	2	760,00	7,110	7,195	6,950	51,1565	7075	138,3012	
	3	802,40	7,250	6,980	7,120	50,6050	6325	124,9876	123,9322
	4	803,40	7,200	7,150	7,050	51,4800	5825	113,1507	
	5	815,50	7,190	7,180	7,080	51,6242	6900	133,6528	
II C	1	741,10	7,095	7,205	7,050	51,1195	7575	148,1822	151,5385
	2	763,60	7,275	7,055	7,200	51,3251	7950	154,8950	
	3	802,40	7,165	7,130	7,140	51,0865	6000	117,4480	114,7007
	4	788,80	7,200	7,015	7,165	50,5080	5425	107,4087	
	5	802,70	7,210	7,098	7,160	51,1766	6100	119,2455	
II D	1	753,30	7,140	7,100	7,115	50,6940	7475	147,2460	153,5754
	2	739,80	7,020	7,070	7,060	49,6214	7925	159,9049	
	3	795,50	7,095	7,155	7,050	50,7647	5925	116,7149	131,8782
	4	791,30	6,990	7,120	7,105	49,7688	6675	134,1202	
	5	793,30	7,090	7,135	7,075	50,5872	7325	144,7996	
II E	1	758,40	7,395	7,160	7,065	52,9482	7775	146,8416	151,9214
	2	741,10	7,165	7,245	7,020	51,9104	8150	157,0012	
	3	762,40	7,145	7,040	6,960	50,3008	5200	103,3781	115,1700
	4	779,40	7,200	7,130	7,110	51,3360	6100	118,8250	
	5	779,60	7,005	7,120	7,170	49,8756	6150	123,3068	

Kuat Tekan Mortar Uji Umur 14 hari (sambungan).

kode bahan uji	No.	Berat (gram)	dimensi (cm)			[A] luas bidang tertekan (cm ²)	[F] gaya tekan (kg)	$\sigma = \frac{[F]}{[A]}$ (kg/cm ²)	$\bar{\sigma}$ rata-rata (kg/cm ²)
III A	1	723,40	7,090	7,090	6,970	50,2681	4550	90,5147	96,0032
	2	712,90	7,050	6,960	7,090	49,0680	4980	101,4918	
	3	765,00	7,310	7,150	7,020	52,2665	4050	77,4875	85,3944
	4	763,60	7,075	7,000	7,130	49,5250	4725	95,4064	
	5	749,30	7,025	7,050	7,085	49,5263	4125	83,2892	
III B	1	747,60	7,185	7,145	7,075	51,3368	5950	115,9012	114,6553
	2	734,80	7,175	7,220	6,960	51,8035	5875	113,4095	
	3	773,40	7,170	7,110	7,110	50,9787	4250	83,3682	94,5455
	4	785,10	7,280	7,070	7,120	51,4696	5080	98,6990	
	5	778,50	7,180	7,295	6,955	52,3781	5320	101,5692	
III C	1	749,50	7,180	7,235	7,000	51,9473	5630	108,3791	99,5455
	2	732,60	7,130	7,055	7,210	50,3022	4530	90,0558	
	3	787,00	7,380	7,115	7,065	52,5087	4850	83,3682	93,4221
	4	769,40	7,150	7,175	7,095	51,3013	5060	98,6331	
	5	773,90	7,105	7,300	7,050	51,8665	4630	89,2676	
III D	1	738,00	7,070	7,095	7,133	50,1617	4925	98,1826	104,9503
	2	743,90	7,065	7,095	7,133	50,1262	5600	111,7181	
	3	754,90	6,920	7,060	7,080	48,8552	5850	119,7416	102,6769
	4	755,90	7,145	6,840	7,080	48,8718	5025	102,8200	
	5	750,00	7,100	6,880	7,100	48,8480	4175	85,4692	
III E	1	708,20	7,065	6,990	7,030	49,3844	4950	100,2342	106,5099
	2	725,20	7,135	7,195	6,990	51,3363	5790	112,7856	
	3	763,40	7,075	6,900	7,220	48,8175	3625	74,2562	74,2132
	4	749,10	7,170	7,010	6,935	50,2617	3675	73,1173	
	5	778,40	7,095	7,350	6,900	52,1483	3925	75,2662	

Kuat Tekan Mortar Uji Umur 14 hari (*sambungan*).

kode bahan uji	No.	Berat (gram)	dimensi (cm)			[A] luas bidang tertekan (cm ²)	[F] gaya tekan (kg)	$\sigma = \frac{[F]}{[A]}$ (kg/cm ²)	$\bar{\sigma}$ rata-rata (kg/cm ²)
IV A	1	691,60	7,015	7,000	7,120	49,1611	2500	50,8532	50,5585
	2	702,60	7,040	7,065	6,965	49,7376	2500	50,2638	
	3	759,60	7,025	7,075	7,155	49,7019	2179	44,0627	45,1040
	4	765,00	7,100	7,100	6,970	50,4100	2360	46,8161	
	5	764,80	7,065	7,040	7,090	49,7376	2210	44,4332	
IV B	1	716,30	7,020	6,955	7,165	48,8241	2870	58,7824	60,4804
	2	739,90	7,090	7,100	7,175	50,3390	3130	62,1784	
	3	785,60	7,145	7,150	7,045	51,0868	2480	48,5449	54,1179
	4	766,50	7,105	6,980	7,160	49,5929	2650	53,4351	
	5	786,00	7,150	7,095	7,140	50,7293	2780	54,8007	
IV C	1	724,70	7,115	7,030	7,175	50,0185	3520	70,3740	68,7657
	2	709,60	7,155	7,055	6,970	50,4785	3390	67,1573	
	3	769,80	7,100	7,135	7,100	50,6585	3130	61,7863	57,1427
	4	782,40	7,210	7,080	7,095	51,0468	2800	54,8516	
	5	792,00	7,265	7,185	7,100	52,1990	2860	54,7903	
IV D	1	713,80	7,020	7,038	7,040	49,4068	3680	74,4837	81,6190
	2	704,40	6,995	7,055	7,035	49,3497	4380	88,7543	
	3	794,20	7,175	7,190	7,110	51,5883	3070	59,5097	61,3102
	4	777,50	7,100	7,100	7,070	50,4100	2920	57,9250	
	5	765,50	6,965	7,100	7,160	49,4515	3260	66,4960	
IV E	1	703,80	7,290	7,060	7,050	51,4674	2920	56,7349	52,4336
	2	722,20	7,198	6,985	7,190	50,2780	2420	48,1324	
	3	745,50	7,110	7,065	6,980	50,2322	2290	45,5883	44,3076
	4	756,40	7,115	7,150	7,000	50,8723	2220	43,3342	
	5	766,00	7,030	7,080	7,155	49,7724	2190	44,0003	

Tabel L.3. Kuat Tekan Mortar Uji Umur 21 hari.

kode bahan uji	No.	Berat (gram)	dimensi (cm)			[A] luas bidang tertekan (cm ²)	[F] gaya tekan (kg)	$\sigma = \frac{[F]}{[A]}$ (kg/cm ²)	$\bar{\sigma}$ rata-rata (kg/cm ²)
I A	1	760,00	7,120	7,050	7,050	50,1960	14200	282,8911	283,2895
	2	759,70	7,050	7,000	7,090	49,3500	14000	283,6879	
	3	789,80	7,120	7,095	7,070	50,5164	12125	240,0211	
	4	797,70	7,055	7,130	7,140	50,3022	12575	249,9893	
	5	782,50	7,099	7,135	7,010	50,6514	14150	279,3607	
I B	1	758,80	7,105	6,968	7,135	49,5076	12300	248,4465	278,6399
	2	782,60	7,200	7,265	7,070	52,2936	16150	308,8332	
	3	799,00	7,100	7,095	7,145	50,3745	12250	243,1786	
	4	804,60	7,265	7,120	7,115	51,7268	12150	234,8879	
	5	790,70	7,135	7,245	6,955	51,6931	13150	254,3860	
I C	1	756,70	6,955	7,045	7,100	48,9980	13250	270,4193	261,7519
	2	770,20	7,110	7,030	7,100	49,9833	12650	253,0845	
	3	794,00	7,110	7,158	7,080	50,8934	10650	209,2610	
	4	808,60	7,175	7,100	7,050	50,9425	12900	253,2267	
	5	794,60	7,085	7,195	7,085	50,9766	11750	230,4980	
I D	1	754,40	7,165	7,100	6,900	50,8715	11375	223,6026	252,5073
	2	772,20	7,200	7,070	7,116	50,9040	14325	281,4121	
	3	797,90	7,100	7,160	7,065	50,8360	12550	246,8723	
	4	793,60	7,235	7,075	7,085	50,4445	10350	205,1762	
	5	806,80	7,190	7,120	7,135	51,1928	7775	151,8768	
I E	1	764,30	7,215	7,180	7,060	51,8037	11550	222,9571	226,1332
	2	769,90	7,313	6,977	7,225	51,0228	11700	229,3093	
	3	762,90	7,165	7,085	7,070	50,7640	9700	191,0802	
	4	793,80	7,235	7,175	7,185	51,9111	8725	168,0757	
	5	812,20	7,265	7,165	7,185	52,0537	8675	166,6547	

Kuat Tekan Mortar Uji Umur 21 hari (sambungan).

kode bahan uji	No.	Berat (gram)	dimensi (cm)			[A] luas bidang tertekan (cm ²)	[F] gaya tekan (kg)	$\sigma = \frac{[F]}{[A]}$ (kg/cm ²)	$\bar{\sigma}$ rata-rata (kg/cm ²)
II A	1	737,10	6,940	6,955	7,085	48,2667	10275	212,8753	193,1725
	2	739,20	7,010	6,990	7,150	48,9999	8500	173,4697	
	3	759,90	7,000	6,990	7,090	48,9300	7150	146,1271	
	4	772,40	7,060	7,035	7,065	49,6671	8800	177,1797	
	5	753,50	6,955	7,010	6,950	48,7546	7400	151,7807	
II B	1	761,70	7,115	6,965	7,195	49,5560	8775	177,0724	168,7777
	2	779,50	7,130	7,210	7,095	51,4073	8250	160,4830	
	3	800,10	7,100	7,065	7,155	50,1615	6725	134,0670	
	4	792,80	7,250	7,005	7,145	50,7863	7400	145,7086	
	5	801,90	7,185	7,140	7,040	51,3009	7200	140,3484	
II C	1	761,60	7,040	7,090	7,110	49,9136	10350	207,3583	188,8160
	2	751,00	7,040	7,070	7,095	49,7728	8475	170,2737	
	3	793,70	7,120	7,180	7,080	51,1216	8800	172,1386	
	4	796,60	7,130	7,065	7,195	50,3735	8775	174,1989	
	5	785,90	7,130	7,040	7,015	50,1952	8725	173,8214	
II D	1	734,50	6,945	7,060	7,070	48,0317	8750	178,7160	174,9126
	2	743,10	6,995	7,070	7,045	49,4547	8475	171,3691	
	3	757,00	7,055	6,950	7,100	49,0323	6900	140,7237	
	4	781,40	7,055	7,080	7,150	49,9494	7025	156,6585	
	5	774,90	6,990	7,055	7,085	49,3145	9775	198,2178	
II E	1	732,80	7,190	6,795	7,025	48,8561	8700	178,0742	173,1250
	2	759,90	7,275	7,070	7,035	51,4343	8650	168,1759	
	3	777,60	7,200	6,980	7,210	50,2560	5900	117,3889	
	4	798,30	7,290	7,055	7,095	51,4310	7450	144,8544	
	5	771,50	7,040	7,140	7,010	50,2656	7700	153,1863	

Kuat Tekan Mortar Uji Umur 21 hari (sambungan).

kode bahan uji	No.	Berat (gram)	dimensi (cm)			[A] luas bidang tertekan (cm ²)	[F] gaya tekan (kg)	$\sigma = \frac{[F]}{[A]}$ (kg/cm ²)	$\bar{\sigma}$ rata-rata (kg/cm ²)
III A	1	712,00	7,175	6,965	7,095	49,9739	4892,928	97,9097	99,3455
	2	711,20	7,025	7,055	7,025	49,5614	4994,864	100,7814	
	3	751,20	7,180	6,950	7,080	49,9010	5606,480	112,3521	
	4	749,00	7,135	6,965	7,055	49,6953	5198,7360	104,6123	
	5	764,30	7,220	6,930	7,140	50,0346	5096,800	101,8655	
III B	1	751,20	7,320	7,220	6,990	52,8504	7135,520	135,0140	134,0395
	2	757,30	7,235	7,200	7,120	52,0920	6931,650	133,065	
	3	767,20	7,220	6,930	7,090	50,0346	5198,736	103,9028	
	4	785,00	7,175	7,170	7,085	51,4448	5096,800	99,0733	
	5	783,90	7,170	7,060	7,110	50,6202	6625,840	130,8932	
III C	1	734,70	7,200	7,035	7,115	50,6520	6014,224	118,7360	126,4960
	2	733,10	7,175	7,090	7,035	50,8708	6829,712	134,2560	
	3	783,10	7,170	7,180	7,035	51,4806	5810,352	112,8649	
	4	784,90	7,230	7,100	7,095	51,3330	6625,840	129,0756	
	5	793,20	7,325	7,120	7,145	52,1540	6116,160	117,2712	
III D	1	733,60	7,180	7,030	7,095	50,4754	6931,648	137,3270	144,8245
	2	734,60	6,970	7,105	7,090	49,5219	7543,264	152,3220	
	3	749,80	6,990	7,015	7,130	49,0349	6320,032	128,8884	
	4	765,00	7,035	7,125	7,075	50,1244	6320,0320	126,0869	
	5	758,00	7,160	6,900	7,055	49,4040	7033,584	142,3687	
III E	1	727,70	7,200	7,220	6,985	51,9840	5606,486	107,8501	111,4767
	2	736,30	7,145	7,065	7,050	50,4794	5810,352	115,1034	
	3	746,10	6,885	7,145	7,090	49,1933	5912,288	120,1848	
	4	769,20	7,200	7,125	7,055	51,3000	6116,160	119,2234	
	5	755,90	7,150	6,885	7,050	49,2278	5708,416	115,9593	

Kuat Tekan Mortar Uji Umur 21 hari (*sambungan*).

kode bahan uji	No.	Berat (gram)	dimensi (cm)			[A] luas bidang tertekan (cm ²)	[F] gaya tekan (kg)	$\sigma = \frac{[F]}{[A]}$ (kg/cm ²)	$\bar{\sigma}$ rata-rata (kg/cm ²)
IV A	1	700,10	7,215	6,960	7,050	50,2164	3575	71,1919	60,4728
	2	721,20	6,965	7,070	6,950	49,2426	2450	49,7537	
	3	751,90	7,000	7,110	7,025	49,7700	2800	56,2588	63,6859
	4	762,10	7,100	7,020	7,155	49,8420	3190	64,1463	
	5	749,00	6,990	6,925	7,140	48,4058	3420	70,6527	
IV B	1	732,60	6,958	7,240	7,090	50,3759	4200	83,3732	93,3117
	2	710,30	6,918	7,210	6,950	49,8788	5150	103,2503	
	3	756,20	7,010	7,160	7,010	50,1916	4430	88,2618	88,5314
	4	758,90	7,140	6,965	7,115	49,7301	4190	84,2548	
	5	759,90	6,895	7,230	7,110	49,8509	4640	93,0776	
IV C	1	731,70	6,818	7,055	7,095	48,1010	4050	80,3956	83,5832
	2	727,20	7,043	7,100	7,020	50,0053	4340	86,7908	
	3	767,30	7,155	7,025	7,205	50,2639	3300	65,6535	72,1955
	4	766,80	7,085	7,090	7,080	50,2327	3690	73,4581	
	5	772,80	7,090	7,100	7,110	50,3390	3900	77,4747	
IV D	1	712,40	6,800	7,035	7,095	47,8380	4640	96,9940	93,5991
	2	728,70	6,920	7,145	7,060	49,4434	4460	90,2042	
	3	754,00	6,880	7,115	7,100	48,9512	3870	79,0583	81,0140
	4	768,20	7,055	7,135	7,105	50,3374	3820	75,8879	
	5	741,40	6,830	7,080	7,090	48,3564	4260	88,0959	
IV E	1	749,50	7,020	7,225	7,040	50,7195	4400	86,7516	93,3245
	2	749,00	6,960	7,105	6,950	49,4508	4940	99,8973	
	3	786,80	6,990	7,220	7,020	50,4678	3090	61,2272	69,0126
	4	772,30	7,075	6,955	7,165	49,2066	3850	78,2415	
	5	802,60	7,270	7,125	7,110	51,7988	3500	67,5692	

Tabel L.4. Kuat Tekan Mortar Uji Umur 28 hari.

kode bahan uji	No.	Berat (gram)	dimensi (cm)			[A] luas bidang tertekan (cm ²)	[F] gaya tekan (kg)	$f = \frac{[F]}{[A]}$ (kg/cm ²)	\bar{f} rata-rata (kg/cm ²)
I A	1	781,30	7,105	6,950	7,100	49,3798	23037,536	466,5380	429,1100
	2	769,10	6,965	6,950	7,070	48,4068	18960,096	391,6820	
	3	807,60	7,175	6,950	7,125	49,8663	18450,416	369,9977	374,0277
	4	807,10	7,120	6,940	7,090	49,4128	18042,672	365,1417	
	5	789,90	6,980	7,020	7,080	48,9996	18960,096	386,9439	
I B	1	770,50	7,070	7,290	6,935	51,5403	24260,768	470,7150	418,4273
	2	769,10	7,020	6,980	7,180	48,9996	17940,736	366,1400	
	3	808,00	7,030	7,075	7,150	49,7373	18450,416	370,9573	400,9572
	4	818,30	7,030	7,235	7,085	50,8621	22425,920	440,9161	
	5	812,40	7,050	7,285	7,155	51,3593	20091,392	390,9982	
I C	1	782,60	7,120	7,035	7,185	50,0892	19367,840	386,6670	359,8558
	2	785,10	7,120	7,050	7,125	50,1960	16717,504	333,0445	
	3	786,10	7,170	7,130	7,170	51,1221	18348,480	358,9148	391,0028
	4	810,60	6,980	7,110	7,105	49,6278	20387,200	410,8020	
	5	802,00	7,100	7,120	7,055	50,5520	20387,200	403,2917	
I D	1	775,40	7,165	7,105	7,130	50,9073	15086,528	296,3529	302,9749
	2	768,10	6,980	7,170	7,180	50,0466	15494,272	309,5969	
	3	789,80	7,010	7,150	7,075	50,1215	11824,576	235,9182	273,6381
	4	779,30	7,150	6,960	7,160	49,7640	14882,656	299,0647	
	5	786,10	7,120	7,060	7,155	50,2672	14372,976	285,9315	
I E	1	746,90	7,075	7,255	7,025	51,3291	16105,888	313,7769	274,7347
	2	722,40	7,080	7,025	6,945	49,7370	11722,640	235,6925	
	3	767,90	7,100	6,980	7,120	49,5580	14678,784	296,1940	264,8363
	4	775,10	7,100	6,980	7,155	49,5580	9378,112	189,2351	
	5	743,00	7,050	6,830	7,080	48,1515	14882,656	309,0798	

Kuat Tekan Mortar Uji Umur 28 hari (sambungan).

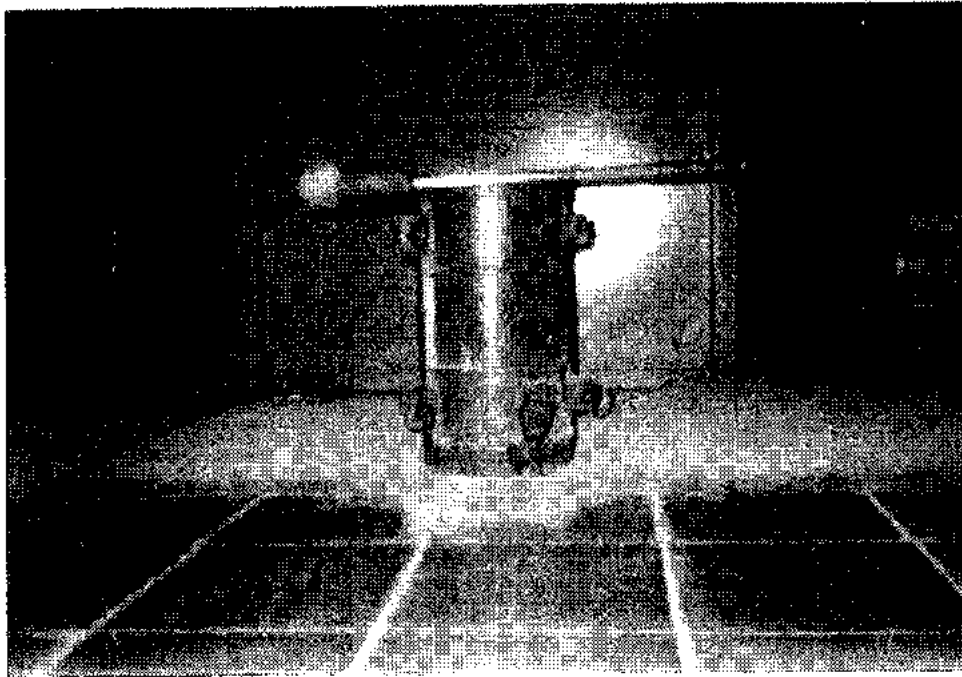
kode bahan uji	No.	Berat (gram)	dimensi (cm)			[A] luas bidang tertekan (cm ²)	[F] gaya tekan (kg)	$\sigma = \frac{[F]}{[A]}$ (kg/cm ²)	σ rata-rata (kg/cm ²)
II A	1	753,70	6,995	6,960	7,055	48,6852	11050	226,9684	225,7905
	2	749,40	6,980	7,080	7,135	49,4184	12050	243,8363	
	3	778,30	7,055	6,990	7,045	49,3145	11100	225,0859	215,6125
	4	785,70	7,030	6,990	7,045	49,1397	10275	209,0977	
	5	776,80	6,940	7,030	7,025	48,7882	10375	212,6539	
II B	1	771,00	7,020	7,170	7,058	50,3334	11950	237,4169	223,2470
	2	777,80	7,105	7,203	7,060	51,1773	10700	209,0771	
	3	812,60	7,130	7,100	7,225	50,6230	8550	168,8956	173,0660
	4	772,10	6,855	6,970	7,220	47,7794	8020	167,8548	
	5	769,80	6,940	6,950	7,180	48,2330	8800	182,4477	
II C	1	744,70	6,958	7,040	7,135	48,9843	10300	210,2715	207,7210
	2	751,90	6,958	7,105	7,130	49,5929	10175	205,1705	
	3	779,60	6,885	7,075	7,155	48,7114	9000	184,7618	188,9514
	4	764,10	7,080	7,050	7,070	49,9140	9750	195,3360	
	5	780,20	6,830	7,095	7,195	48,4589	9050	186,7564	
II D	1	780,02	7,088	7,135	7,085	50,5729	11200	221,4625	218,9973
	2	755,00	7,150	7,105	6,930	50,8008	11000	216,5320	
	3	793,60	6,995	7,085	7,080	49,5596	12250	247,1773	211,7831
	4	802,50	7,150	7,115	7,010	50,8723	11150	219,1765	
	5	816,00	7,180	7,170	7,125	51,4806	8700	168,9957	
II E	1	783,80	6,935	7,208	6,973	49,9875	10650	213,0533	224,0839
	2	802,60	6,880	7,233	7,025	49,7630	11700	235,1144	
	3	761,90	6,995	6,835	7,075	47,8108	10900	227,9818	182,8301
	4	793,80	7,120	7,030	7,225	50,0536	6650	132,8576	
	5	782,00	7,220	6,975	7,035	50,3595	9450	187,6508	

Kuat Tekan Mortar Uji Umur 28 hari (sambungan).

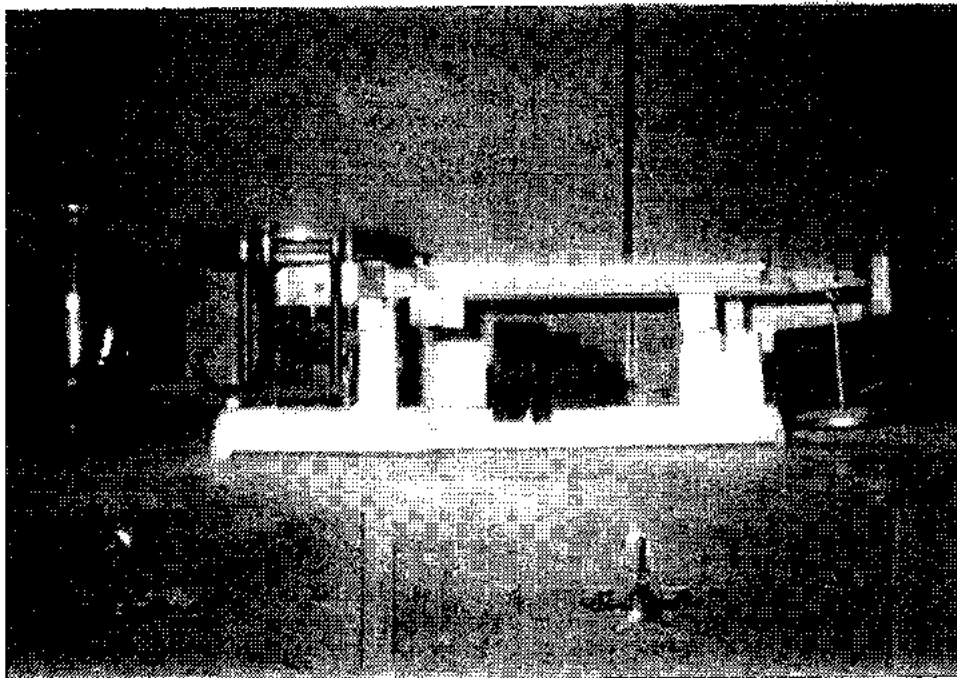
kode bahan uji	No.	Berat (gram)	dimensi (cm)			[A] luas bidang tertekan (cm ²)	[F] gaya tekan (kg)	$\sigma = \frac{[F]}{[A]}$ (kg/cm ²)	$\bar{\sigma}$ rata-rata (kg/cm ²)
III A	1	732,90	7,310	7,110	6,970	51,9741	5300	101,9739	103,0416
	2	729,30	7,150	7,120	6,965	50,9080	5300	104,1094	
	3	767,80	7,300	6,940	7,070	50,6620	5708	112,6683	
	4	762,70	7,080	6,920	7,155	48,9936	6626	135,2422	
	5	740,00	7,060	6,970	7,050	49,2082	5810	118,2372	
III B	1	741,80	7,165	7,075	7,135	50,6924	6626	130,7100	138,9853
	2	731,20	7,070	7,245	6,975	51,2222	7543	147,2605	
	3	748,90	7,020	6,970	7,120	48,9294	6524	133,3350	
	4	782,50	7,075	7,150	7,220	50,5863	6422	126,9515	
	5	765,80	7,215	7,100	7,120	51,2265	6932	135,3206	
III C	1	761,60	7,160	7,135	7,220	51,0866	7849	153,6411	154,6777
	2	747,50	7,040	7,160	7,035	50,4064	7849	155,7144	
	3	789,10	7,220	7,120	7,150	51,4064	8868	172,5077	
	4	764,70	7,110	7,130	7,000	50,6943	6524	129,4190	
	5	767,80	7,035	7,265	6,930	51,1093	6932	136,0054	
III D	1	733,90	6,915	7,085	7,080	48,9928	8257	168,5351	164,4812
	2	757,10	7,055	7,025	7,115	49,5614	7951	160,4274	
	3	747,90	7,035	7,120	6,985	50,0892	7039	140,4295	
	4	762,70	6,960	7,060	7,160	49,1376	7136	146,0571	
	5	744,00	6,955	7,085	7,080	49,2762	7339	148,9360	
III E	1	727,80	7,115	6,950	7,235	49,4493	6218	125,7451	145,7946
	2	752,40	7,185	7,015	7,155	50,4028	8359	165,8440	
	3	765,80	7,010	6,900	7,170	48,3690	6728	139,0974	
	4	772,80	7,285	6,990	7,035	50,9222	6116	120,1049	
	5	733,60	7,070	7,260	7,025	51,3282	6830	131,9363	

Kuat Tekan Mortar Uji Umur 28 hari (sambungan).

kode bahan uji	No.	Berat (gram)	dimensi (cm)			[A] luas bidang tertekan (cm ²)	[F] gaya tekan (kg)	$\sigma = \frac{[F]}{[A]}$ (kg/cm ²)	$\bar{\sigma}$ rata-rata (kg/cm ²)
IV A	1	710,00	7,000	7,080	6,970	49,5600	4320	87,1671	92,2405
	2	719,00	7,035	6,945	7,130	48,8581	4950	101,3138	
	3	737,50	7,070	6,920	7,070	48,9244	4100	83,8028	
	4	747,90	7,040	6,915	7,140	48,6816	4270	87,7128	
	5	740,30	7,035	6,970	7,000	49,0340	3810	77,7012	
IV B	1	750,40	7,240	7,060	7,145	51,1144	5275	103,1999	104,6013
	2	734,00	7,095	7,180	6,955	50,9421	5400	106,0027	
	3	782,40	7,130	7,090	7,170	50,5317	4410	87,2374	
	4	798,30	7,170	7,220	7,145	51,7676	5080	98,1313	
	5	754,40	7,100	6,930	7,090	49,2030	4740	96,3356	
IV C	1	716,80	7,030	6,980	7,210	49,0694	4300	87,6310	91,8896
	2	754,90	7,090	7,100	7,220	50,3390	4840	96,1481	
	3	763,40	7,100	7,080	7,180	50,2680	4050	80,5682	
	4	769,10	7,050	7,120	7,135	50,1960	3690	73,5118	
	5	788,50	7,200	7,035	7,110	50,6520	4340	85,6827	
IV D	1	723,00	7,000	7,090	7,110	49,6300	5190	104,5738	104,6444
	2	733,40	7,120	7,055	7,100	50,2316	5260	104,7150	
	3	779,40	7,070	7,085	7,050	50,0910	4810	96,0253	
	4	788,50	7,100	6,960	7,130	49,4160	4280	86,6116	
	5	805,70	7,270	7,035	7,175	51,1445	4700	91,8965	
IV E	1	723,80	7,150	7,100	6,930	50,7650	5760	113,4640	111,1408
	2	720,10	7,290	6,845	7,060	49,9001	5430	108,8175	
	3	766,10	7,300	6,925	7,230	50,5525	5100	100,8852	
	4	771,60	7,185	7,060	7,025	50,7261	3940	77,6720	
	5	771,80	7,238	7,015	7,145	50,7746	5080	100,0500	

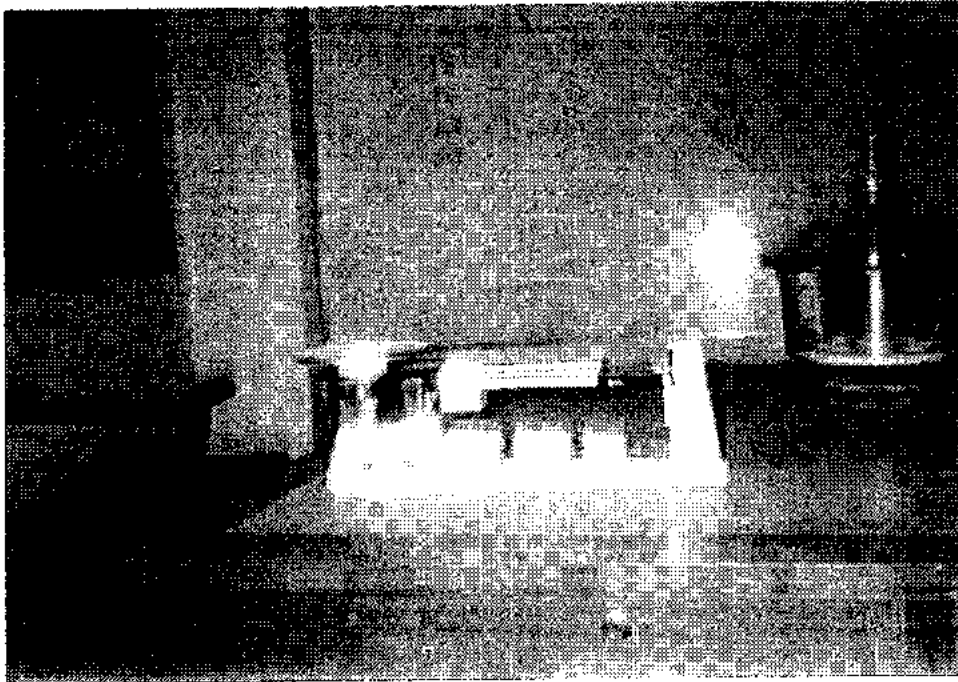


Gambar L.1. Cetakan Silinder Beton.



Gambar L.2. Timbangan Sedang (20 kg)

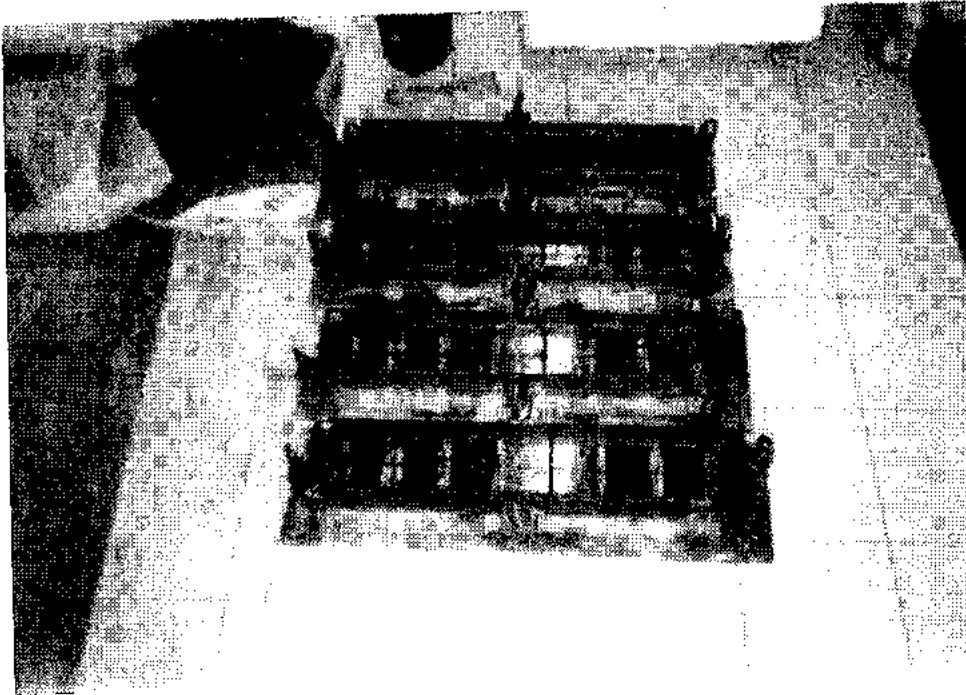




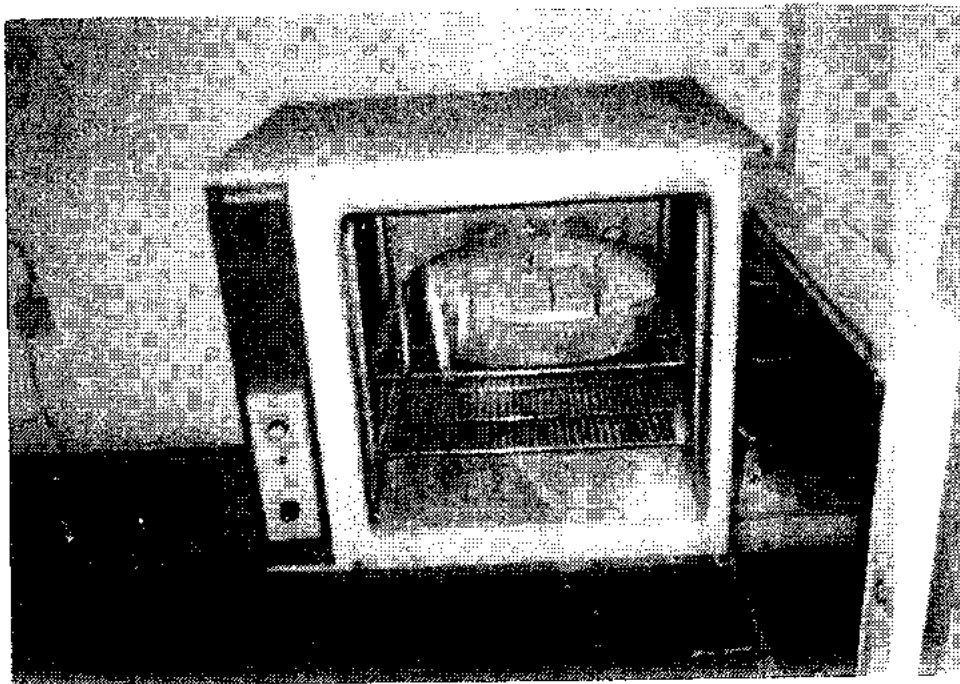
Gambar L.3. Timbangan Kecil (2610 gr)



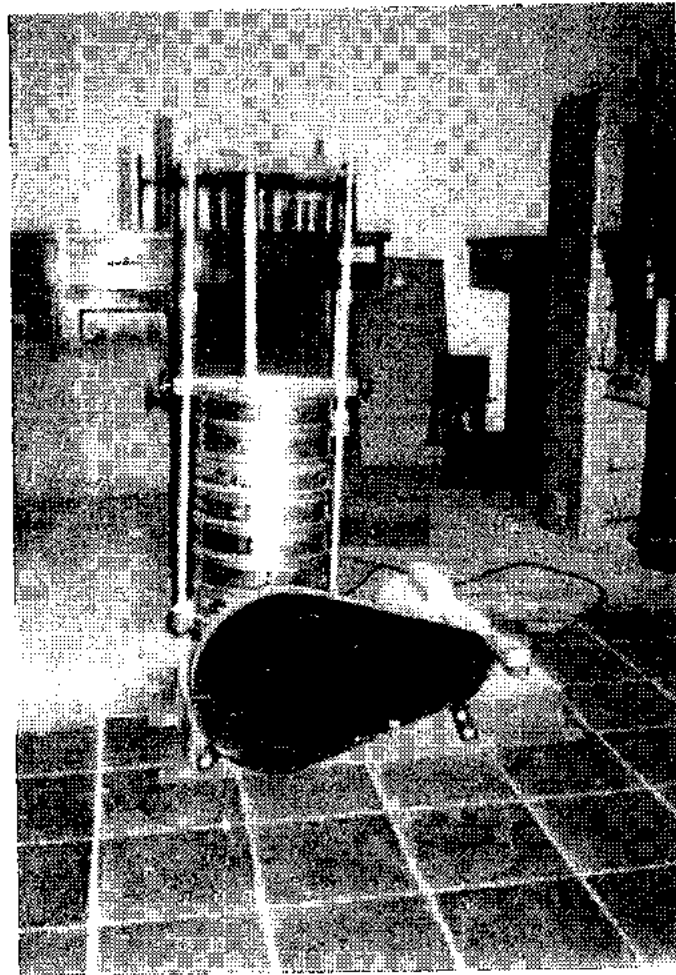
Gambar L.4. Perlengkapan slump test



Gambar L.5. Alat cetak mortar uji.



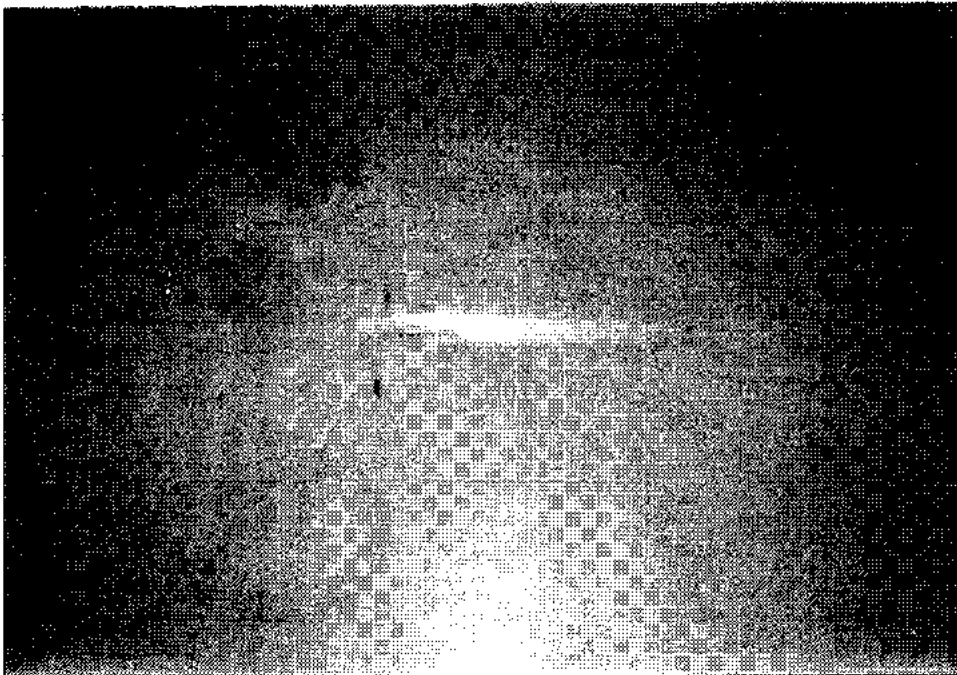
Gambar L.6. Oven.



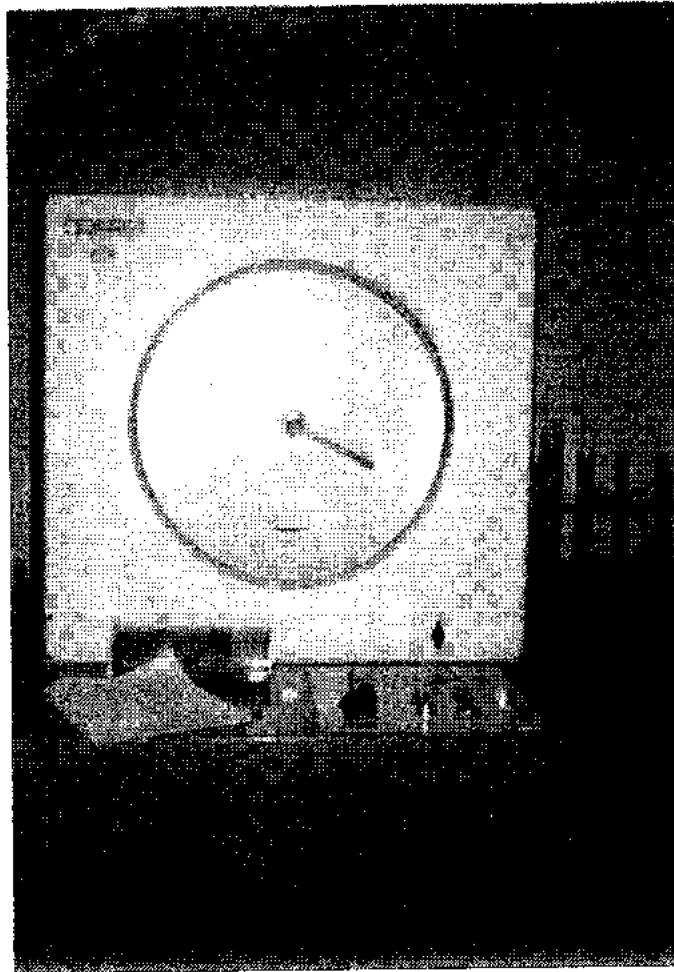
Gambar L.7. Penggetar Saringan



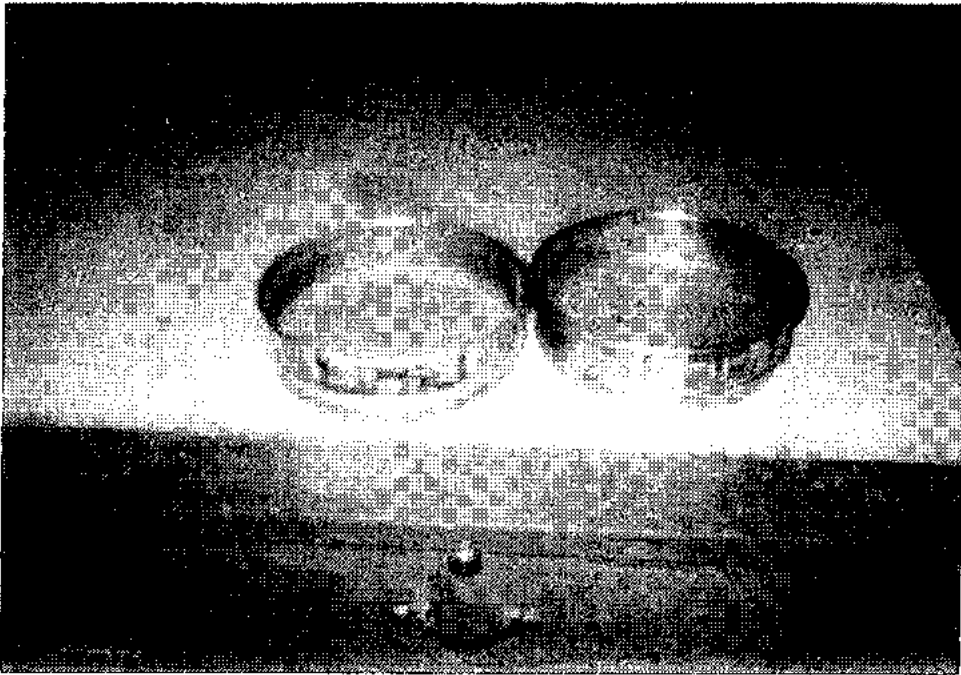
Gambar L.8. Desikator



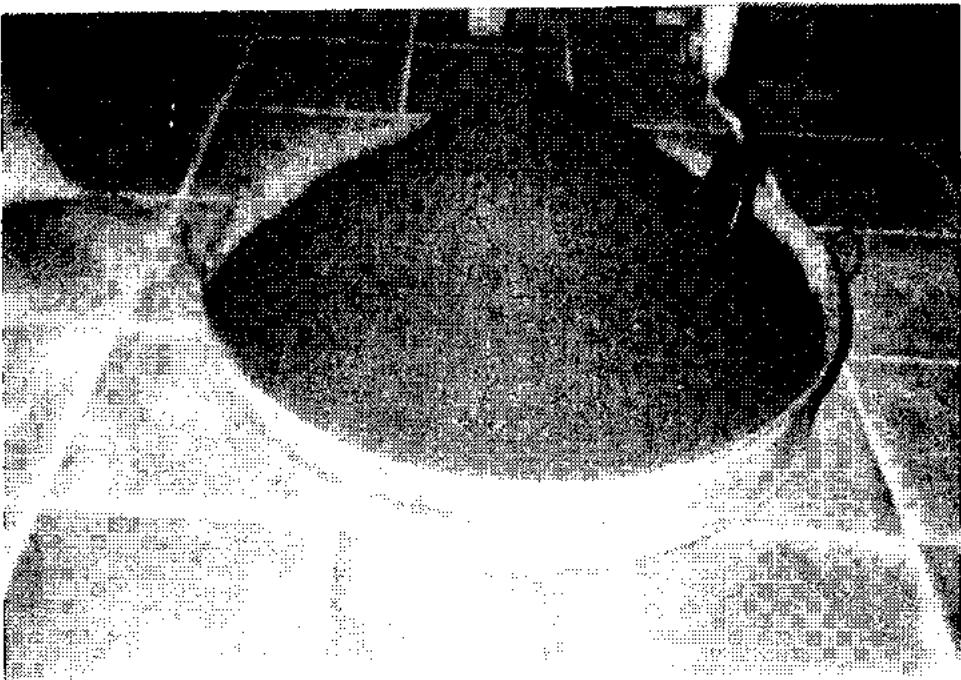
Gambar L.9. Kaliper



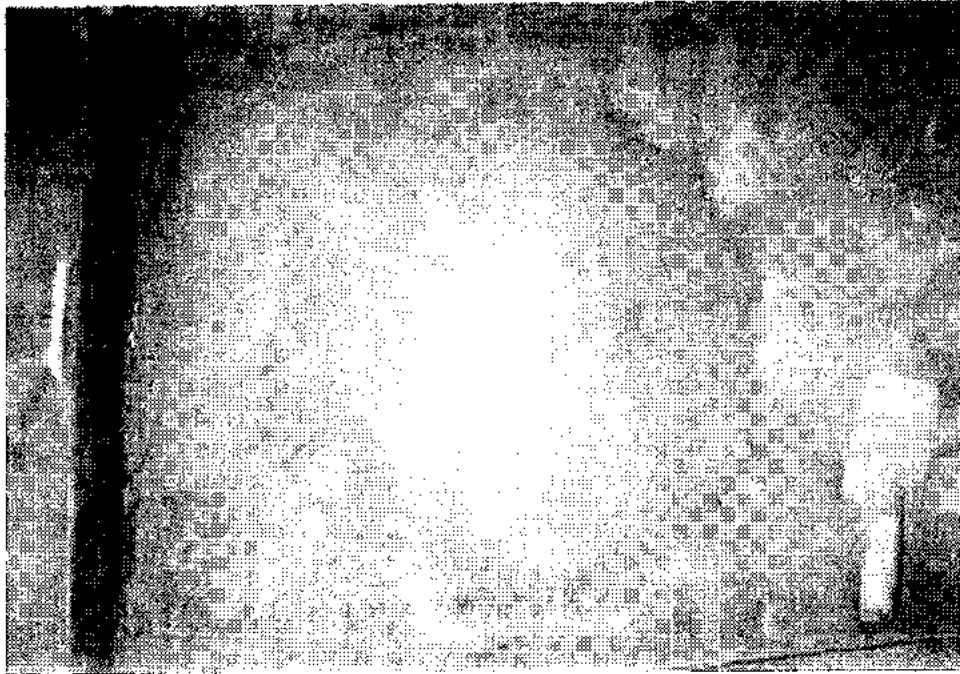
Gambar L.10. Alat uji desak



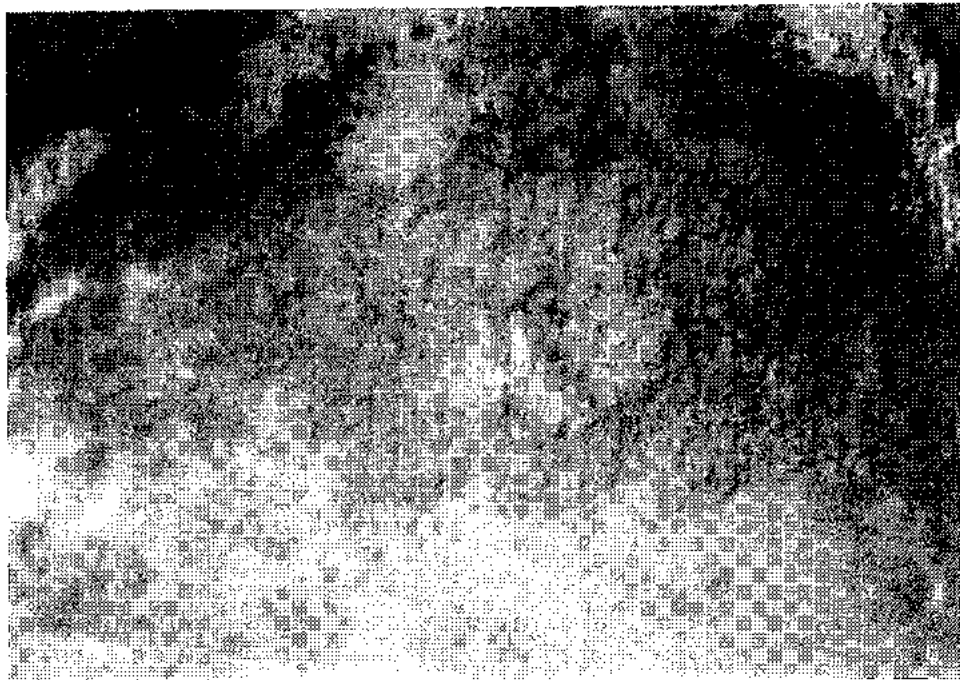
Gambar L.11. Avakan pasir dan kapur



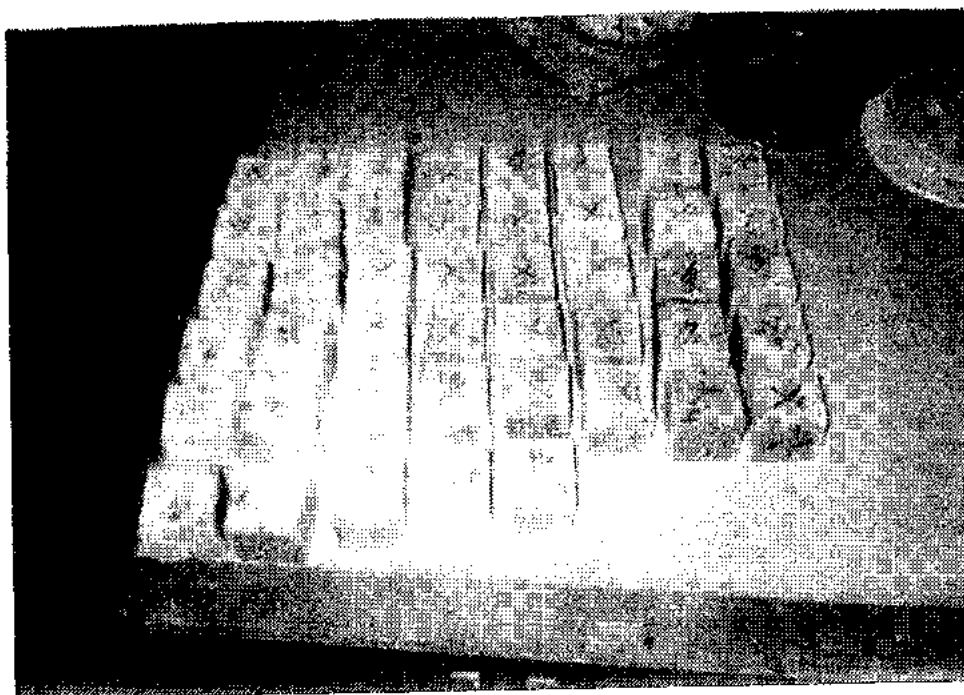
Gambar L.12. Kondisi pasir



Gambar L.13. Adukan kering



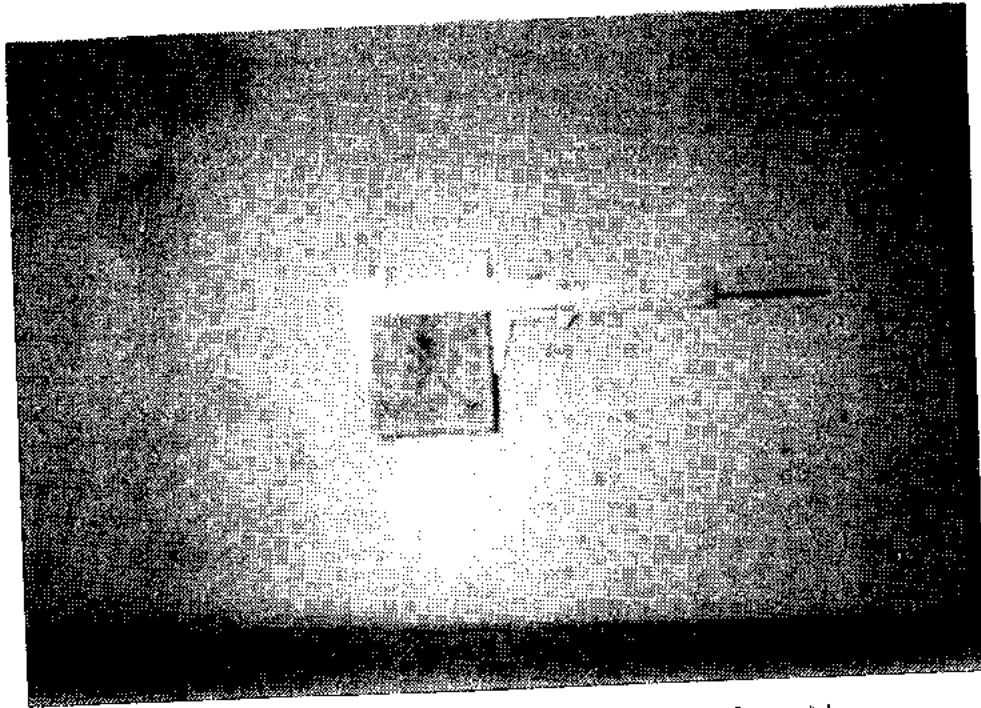
Gambar L.14. Adukan basah



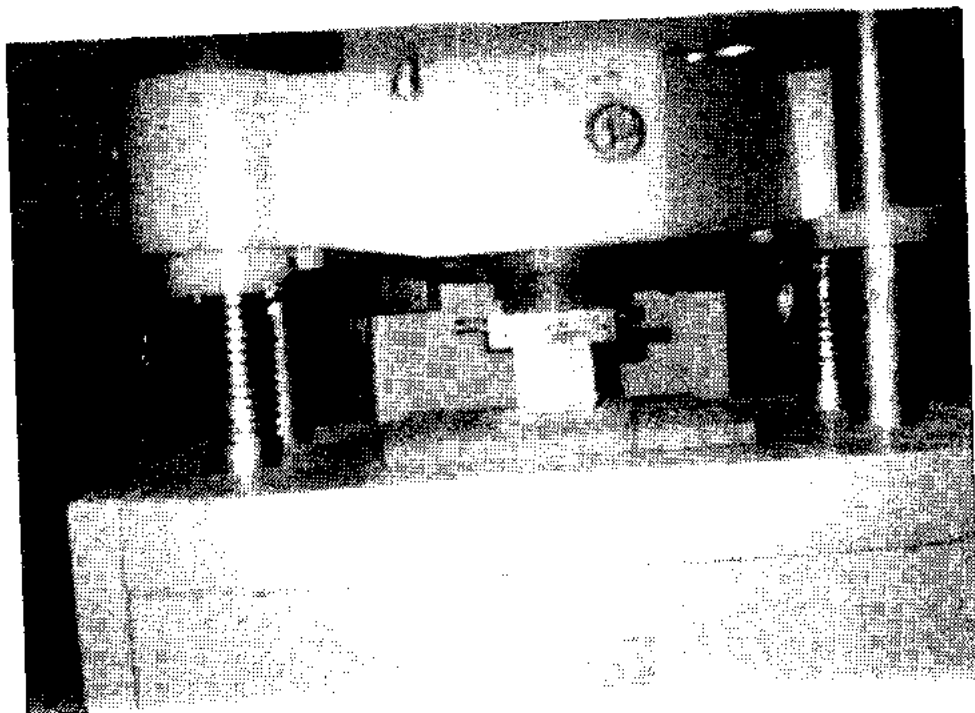
Gambar L.15. Benda u.i.



Gambar L.16. Rawatan benda u.i



Gambar L.17. Pengukuran benda uji



Gambar L.18. Pengujian desak mortar.