

DAFTAR PUSTAKA

- Akita, Takahiro, 2000. *Decomposing Regional Income Inequality Using Two-Stage Nested Theil Decomposing Method*, Working Paper No.2
- Arsyad, Lincoln, 1999. *Pengantar Perencanaan dan Pembangunan Ekonomi Daerah*. Edisi pertama, BPFE, Jogjakarta, Lincoln, 1997. *Ekonomi Pembangunan..* edisi ke 3, STIE YKPN, Yogyakarta.
- Boediono, 1985. *Teori Pertumbuhan Ekonomi*. BPFE, Yogyakarta.
- Dajan, Anto, 1986. *Pengantar Metode Statistika Jilid I*. LP3ES, Jakarta
- Djarwanto dan Subagyo, Pangestu, 1985. *Statistik Induktif*. BPFE, Yogyakarta
- Gemmell, Norman. 1992, Ilmu Ekonomi Pembangunan beberapa survei, LP3ES, Jakarta.
- Kuncoro, Mudrajad, 1997. *Ekonomi Pembangunan (teori, masalah, dan kebijakan)*. UPP AMP YKPN, Yogyakarta, Mudrajad, 2004. *Otonomi dan Pembangunan Daerah*. Erlangga, Jakarta, Mudrajad, 2001. *Analisis Spasial dan Regional*. UPP AMP YKPN, Yogyakarta, M dan Aswandi, H, 2002. Evaluasi Penetapan Kawasan Andalan : Studi Empiris di Kalimantan Selatan 1993-1999, *Jurnal Ekonomi dan Bisnis Indonesia*, Vol 17, No 1, 27-45, UGM, Jogjakarta.
- Kustianto, Bambang, 1984. *Statistik Analisa Runtut Waktu dan Regresi-Korelasi*. BPFE dan AMP YKPN, Yogyakarta.
- Majidi, Nasyith, 1997, Anggaran Pembangunan dan Ketimpangan Ekonomi antar Daerah, *Prisma*, LP3ES No.3 : 3-16.
- Mardiyono. 2000, *Kesenjangan Pembangunan Ekonomi di Propinsi Jawa Timur*, Tesis S-2, Program Pasca Sarjana, UGM, Yogyakarta. (tidak dipublikasikan).
- Mubyarto. 1999, *Membangun Sistem Ekonomi*, BPFE, Yogyakarta, 1995, *Ekonomi dan Keadilan Sosial*, ADITYA MEDIA, Yogyakarta.
- Sjafrizal, 1997, Pertumbuhan Ekonomi dan Ketimpangan Regional Wilayah Indonesia Bagian Barat, *Prisma*, LP3ES, No 3 : 27-38.

Todaro, Michael, P, 2000, *Pembangunan Ekonomi di Dunia Ketiga*, Edisi Ketujuh (diterjemahkan oleh Haris Munandar), Erlangga, Jakarta

Wijaya, Faried. 1990, *Ekonomika Makro*, BPFE, Yogyakarta

Rosadinata, Okta. 2004, *Pertumbuhan Ekonomi Dan Ketimpangan Antar Kabupaten/Kota Di Propinsi Jawa Timur 1995-2002*. Skripsi S-1, Fakultas Ekonomi, UII, Jogjakarta.

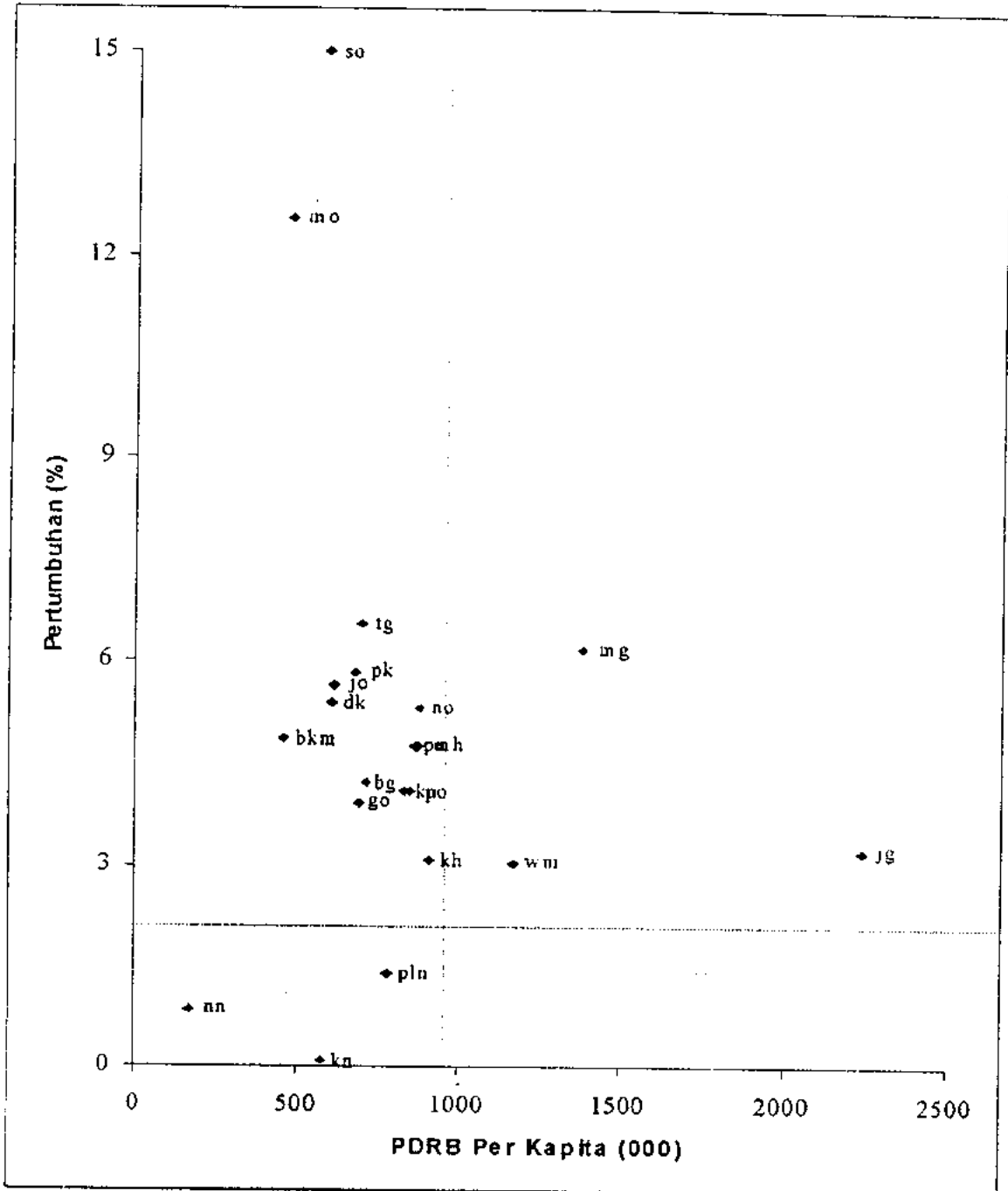
Rata-Rata PDRB Per Kapita (000) dan Pertumbuhan (%)

Kecamatan di Kabupaten Jombang

1995-2002

No.	Kabupaten/Kota	Simbol	Rata-Rata PDRB Per Kapita (000)	Rata-Rata Pertumbuhan (%)
1	2	3	4	5
1	Bandar Kedung Mulyo	bkm	461.37	4.86
2	Perak	pk	677.86	5.84
3	Gudo	go	689.14	3.94
4	Diwek	dk	608.69	5.39
5	Ngoro	no	877.56	5.33
6	Mojowarno	mo	479.94	12.55
7	Bareng	bg	713.67	4.22
8	Wonosalam	wm	1174.16	3.06
9	Mojoagung	mg	1381.99	6.17
10	Sumobito	so	586.48	15.00
11	Jogoroto	jo	615.14	5.63
12	Peterongan	pn	869.88	4.77
13	Jombang	jg	2238.96	3.22
14	Megaluh	mh	873.77	4.77
15	Tembelang	tg	697.26	6.54
16	Kesamben	kn	579.26	0.11
17	Kudu	ku	832.93	4.10
18	Ngusikan	nn	173.18	0.84
19	Ploso	po	850.05	4.09
20	Kabuh	kh	911.60	3.10
21	Plandaan	pln	784.57	1.38
	Kabupaten Jombang		930.31	2.04

Pola dan Struktur Perekonomian Kabupaten Jombang
Menurut Tipologi Daerah, 1995-2002



Perhitungan Indeks Ketimpangan Williamson

No.	Kecamatan	1995					
		y_i	$y_i - y$	$(y_i - y)^2$	f_i	f_i/n	$(y_i - y)^2 \times f_i/n$
1	Bandar Kedung Mulyo	473.20	-631.87	399,259.70	43,307	0.0401	16,026.94
2	Perak	587.80	-517.27	267,568.25	46,107	0.0427	11,435.06
3	Gudo	604.97	-500.10	250,100.01	50,653	0.0470	11,742.37
4	Diwek	521.85	-583.22	340,145.57	83,364	0.0773	26,283.32
5	Ngoro	785.77	-319.30	101,952.49	60,368	0.0560	5,704.81
6	Mojowarno	394.79	-710.28	504,497.68	75,094	0.0696	35,115.70
7	Bareng	694.24	-410.83	168,781.29	47,901	0.0444	7,493.86
8	Wonosalam	1,004.50	-100.57	10,114.32	27,793	0.0258	260.56
9	Mojoagung	1,078.10	-26.97	727.38	63,345	0.0387	42.71
10	Sumobito	453.12	-651.95	425,038.80	70,643	0.0655	27,831.37
11	Jogoroto	512.71	-592.36	350,890.37	48,960	0.0454	15,923.91
12	Peterongan	708.99	-396.08	156,879.37	52,863	0.0490	7,686.96
13	Jombang	2,013.11	908.04	824,536.64	108,515	0.1006	82,934.77
14	Megaluh	739.10	-365.97	133,934.04	36,387	0.0337	4,517.25
15	Tembelang	594.09	-510.98	261,100.56	47,319	0.0439	11,451.97
16	Kesamben	633.89	-471.18	222,010.59	57,826	0.0536	11,899.64
17	Kudu	713.91	-391.16	153,006.15	47,391	0.0439	6,721.12
18	Ngusikan	0.00	0.00	0.00	0	0.0000	0.00
19	Ploso	726.91	-378.16	143,004.99	37,999	0.0352	5,036.86
20	Kabuh	853.04	-252.03	63,519.12	37,372	0.0346	2,200.33
21	Plandaan	1,003.75	-101.32	10,265.74	35,368	0.0328	336.54
	Kabupaten Jombang	1,105.07			1,078,855		290,646.07
		y			n		

Perhitungan Indeks Ketimpangan Williamson

No.	Kecamatan	1996					
		y_i	$y_i - \bar{y}$	$(y_i - \bar{y})^2$	f_i	f_i/n	$(y_i - \bar{y})^2 \times f_i/n$
1	Bandar Kedung Mulyo	992.86	-128.26	16,450.63	43,620	0.0397	653.28
2	Perak	607.78	-513.34	263,517.96	46,461	0.0423	11,146.27
3	Gudo	613.16	-507.96	258,023.36	51,275	0.0467	12,044.69
4	Diwek	543.04	-578.08	334,176.49	86,126	0.0784	26,202.39
5	Ngoro	813.20	-307.92	94,814.73	60,893	0.0554	5,256.22
6	Mejowarno	417.10	-704.02	495,644.16	76,297	0.0695	34,427.72
7	Bareng	730.95	-390.17	152,232.63	47,793	0.0435	6,623.73
8	Wonosalam	1,073.93	-47.19	2,226.90	28,506	0.0260	57.79
9	Mejoagung	1,193.27	72.15	5,205.62	66,351	0.0604	314.45
10	Sumobito	478.40	-642.72	413,089.00	71,871	0.0654	27,028.88
11	Jogoroto	537.85	-583.27	340,203.89	53,015	0.0483	16,419.84
12	Puterongan	814.73	-306.39	93,874.83	53,487	0.0487	4,571.18
13	Jombang	2,010.44	889.32	790,890.06	110,254	0.1004	79,385.51
14	Megaluh	821.04	-300.08	90,048.01	36,477	0.0332	2,990.36
15	Tembelang	605.21	-515.91	266,163.13	47,679	0.0434	11,553.29
16	Kesamben	660.07	-461.05	212,567.10	58,054	0.0529	11,234.64
17	Kudu	753.12	-368.00	135,424.00	47,623	0.0434	5,871.42
18	Ngusikan	0.00	0.00	0.00	0	0.0000	0.00
19	Plosu	741.00	-380.12	144,491.21	38,489	0.0350	5,063.01
20	Kabuh	876.79	-244.33	59,697.15	37,887	0.0345	2,059.09
21	Plandaan	1,009.87	-111.25	12,376.56	36,264	0.0330	408.61
Kabupaten Jombang		1,121.12			1,098,422		263,312.37
		\bar{y}			n		

Perhitungan Indeks Ketimpangan Williamson

No.	Kecamatan	1997					
		y_i	$y_i - \bar{y}$	$(y_i - \bar{y})^2$	f_i	f_i/n	$(y_i - \bar{y})^2 \times f_i/n$
1	Bandar Kedung Mulyo	505,13	-561,14	314.878,10	44.015	0,0398	12.526,11
2	Perak	659,87	-406,40	165.160,96	46.906	0,0424	7.001,78
3	Gudo	653,09	-413,18	170.717,71	51.469	0,0465	7.941,40
4	Dirwek	581,10	-485,17	235.389,93	86.347	0,0780	18.369,95
5	Ngoro	835,01	-231,26	53.481,19	61.284	0,0554	2.962,25
6	Mojowarno	463,64	-602,63	363.162,92	77.353	0,0699	25.389,35
7	Bareng	805,98	-260,29	67.750,88	48.011	0,0434	2.939,87
8	Wonosalam	1.159,17	92,90	8.630,41	28.036	0,0253	218,69
9	Mojoagung	1.264,20	197,93	39.176,28	66.815	0,0604	2.365,76
10	Sumobito	523,29	-542,98	294.827,28	72.240	0,0653	19.249,45
11	Jogoroto	561,90	-504,37	254.389,10	53.260	0,0481	12.245,39
12	Peterongan	841,04	-225,23	50.728,55	54.086	0,0489	2.479,76
13	Jombang	2.120,62	1.054,35	1.111.653,92	111.690	0,1009	112.216,52
14	Megaluh	843,76	-222,51	49.510,70	36.537	0,0330	1.634,95
15	Tembelang	658,85	-407,42	165.991,06	47.994	0,0434	7.200,20
16	Kesamben	725,79	-340,48	115.926,63	58.253	0,0526	6.103,44
17	Kudu	786,63	-279,64	78.198,53	48.743	0,0441	3.444,96
18	Ngusikan	0,00	0,00	0,00	0	0,0000	0,00
19	Ploso	775,01	-291,26	84.832,39	38.728	0,0350	2.969,34
20	Kabuh	893,21	-173,06	29.949,76	38.113	0,0344	1.031,67
21	Plandaan	1.013,17	-53,10	2.819,61	36.558	0,0330	93,16
	Kabupaten Jombang	1.066,27			1.106.438		248.384,00
		\bar{y}			Σ		

Perhitungan Indeks Ketimpangan Williamson

No.	Kecamatan	1998					
		v_i	$y_i - \bar{y}$	$(y_i - \bar{y})^2$	f_i	f_i/n	$(y_i - \bar{y})^2 \times f_i/n$
1	Bandar Kedung Mulyo	519.29	-41.82	1,748.91	44,481	0.0399	69.82
2	Perak	678.28	117.17	13,728.81	47,130	0.0423	580.75
3	Gudo	695.87	134.76	18,160.26	51,690	0.0464	842.53
4	Diwek	611.40	50.29	2,529.08	86,457	0.0776	196.25
5	Ngoro	873.04	311.93	97,300.32	61,801	0.0555	5,397.17
6	Mojowarno	491.59	-69.52	4,833.03	78,264	0.0702	339.50
7	Bareng	823.04	261.93	68,607.32	48,233	0.0433	2,970.10
8	Wonosalam	1,204.29	643.18	413,680.51	28,125	0.0252	10,442.73
9	Mojoagung	1,357.83	796.72	634,762.76	67,239	0.0604	38,307.96
10	Suroboyo	579.14	18.03	325.08	72,355	0.0649	21.11
11	Jogeroto	609.84	48.73	2,374.61	53,504	0.0480	114.03
12	Peterongan	908.43	347.32	120,631.18	54,856	0.0492	5,939.37
13	Jombang	2,131.27	1,570.16	2,465,402.43	112,635	0.1011	249,239.87
14	Megaluh	871.85	310.74	96,559.35	36,445	0.0327	3,158.56
15	Tembelang	693.04	131.93	17,405.52	48,698	0.0437	760.77
16	Kesamben	783.02	221.91	49,244.05	59,430	0.0533	2,626.73
17	Kudu	803.16	242.05	58,588.20	49,112	0.0441	2,582.58
18	Ngusikan	0.00	0.00	0.00	0	0.0000	0.00
19	Ploso	875.44	314.33	98,803.35	38,829	0.0349	3,443.37
20	Kabuh	903.11	342.00	116,964.00	38,236	0.0343	4,014.03
21	Plandaan	1,003.57	442.46	195,770.85	36,630	0.0329	6,436.37
Kabupaten Jombang		561.11			1,114,150		337,483.62
		\bar{y}			n		

Perhitungan Indeks Ketimpangan Williamson

No.	Kecamatan	1999					
		y_i	$y_i - y$	$(y_i - y)^2$	f_i	f_i/n	$(y_i - y)^2 \times f_i/n$
1	Bandar Kedung Mulyo	542.28	-173.14	29,977.46	44,754	0.0399	1,196.03
2	Perak	709.13	-6.29	39.56	47,417	0.0423	1.67
3	Gudo	719.59	4.17	17.39	51,885	0.0463	0.80
4	Diwek	637.83	-77.59	6,020.21	86,756	0.0773	465.61
5	Ngoro	916.83	201.41	40,565.99	62,053	0.0553	2,244.09
6	Mojowarno	517.25	-198.17	39,271.35	78,960	0.0704	2,764.38
7	Bareng	850.81	135.39	18,330.45	48,702	0.0434	795.86
8	Wonosalam	1,213.05	497.63	247,635.62	28,629	0.0255	6,320.25
9	Mojoagung	1,491.16	775.74	601,772.55	67,688	0.0603	36,312.76
10	Sumobito	631.17	-84.25	7,098.06	72,800	0.0649	460.67
11	Jogoroto	621.78	-93.64	8,768.45	53,340	0.0476	416.96
12	Peterongan	913.42	198.00	39,204.00	55,217	0.0492	1,929.83
13	Jombang	2,242.98	1,527.56	2,333,439.55	114,069	0.1017	237,289.95
14	Megaluh	913.10	197.68	39,077.38	36,624	0.0326	1,275.87
15	Tembelang	720.90	5.48	30.03	49,108	0.0438	1.31
16	Kesamben	425.40	-290.02	84,111.60	60,145	0.0536	4,509.94
17	Kudu	638.40	-77.02	5,932.08	49,307	0.0440	260.75
18	Ngusikan	0.00	0.00	0.00	0	0.0000	0.00
19	Ploso	891.12	175.70	30,870.49	39,234	0.0350	1,079.75
20	Kabuh	917.41	201.99	40,799.96	38,267	0.0341	1,391.87
21	Plandaan	1,023.80	308.38	95,098.22	36,766	0.0328	3,116.98
	Kabupaten Jombang	715.42			1,121,721		298,718.35
		y			n		

Perhitungan Indeks Ketimpangan Williamson

No.	Kecamatan	2000					
		y_i	$y_i - y$	$(y_i - y)^2$	f_i	f_i/n	$(y_i - y)^2 \times f_i/n$
1	Bandar Kedung Mulyo	563.11	-306.73	94,083.29	44,916	0.0398	3,742.91
2	Perak	711.04	-158.80	25,217.44	47,591	0.0422	1,062.97
3	Gudo	723.95	-145.89	21,283.89	52,139	0.0462	982.90
4	Diwek	640.16	-229.68	52,752.90	86,952	0.0770	4,062.76
5	Ngoro	920.45	50.61	2,561.37	62,291	0.0552	141.32
6	Mojowarno	520.14	-349.70	122,290.09	79,465	0.0704	8,607.22
7	Bareng	880.79	10.95	119.90	48,991	0.0434	5.20
8	Wonosulam	1,220.09	350.25	122,675.06	30,434	0.0270	3,306.82
9	Mojoagung	1,510.31	640.47	410,201.82	68,316	0.0605	24,820.79
10	Sumobito	654.25	-215.59	46,479.05	73,264	0.0649	3,016.08
11	Jogoroto	663.59	-206.25	42,539.06	53,472	0.0474	2,014.70
12	Peterongan	917.78	47.94	2,298.24	55,499	0.0492	112.97
13	Jombang	2,353.84	1,484.00	2,202,256.00	114,911	0.1018	224,142.95
14	Megaluh	921.21	51.37	2,638.88	36,833	0.0326	86.09
15	Tembelang	753.77	-116.07	13,472.24	49,369	0.0437	589.10
16	Kesamben	457.03	-412.81	170,412.10	60,391	0.0535	9,115.24
17	Kudu	864.83	-5.01	25.10	49,561	0.0439	1.10
18	Ngusikan	0.00	0.00	0.00	0	0.0000	0.00
19	Ploso	907.84	38.00	1,444.00	39,806	0.0353	50.91
20	Kabuh	941.85	72.01	5,185.44	37,941	0.0336	174.26
21	Plandaan	1,060.40	190.56	36,313.11	36,885	0.0327	1,186.34
	Kabupaten Jombang	869.84			1,129,027		3,742.91
		y			n		

Perhitungan Indeks Ketimpangan Williamson

No.	Kecamatan	2001					
		y_i	$y_i - \bar{y}$	$(y_i - \bar{y})^2$	f_i	f_i/n	$(y_i - \bar{y})^2 \times f_i/n$
1	Bandar Kedung Mulyo	574.22	-413.56	171,031.87	45,059	0.0396	6,769.18
2	Perak	714.28	-273.50	74,802.25	47,837	0.0420	3,143.08
3	Gudo	738.79	-248.99	61,996.02	52,255	0.0459	2,845.57
4	Diwek	660.85	-326.93	106,883.22	87,363	0.0767	8,201.90
5	Ngoro	930.99	-56.79	3,225.10	64,664	0.0568	183.18
6	Mojowarno	509.04	-478.74	229,191.99	79,956	0.0702	16,096.36
7	Bareng	807.64	-180.14	32,450.42	49,124	0.0431	1,400.20
8	Wonosulam	1,248.06	260.28	67,745.68	30,561	0.0268	1,818.55
9	Mojoagung	1,530.84	543.06	294,914.16	68,893	0.0605	17,846.29
10	Sumobito	694.60	-293.18	85,954.51	73,794	0.0648	5,571.43
11	Jogoroto	682.59	-305.19	93,140.94	53,574	0.0471	4,383.00
12	Peterongan	920.65	-67.13	4,506.44	56,123	0.0493	222.15
13	Jombang	2,464.03	1,476.25	2,179,314.06	117,047	0.1028	224,056.41
14	Megaluh	947.50	-40.28	1,622.48	36,950	0.0325	52.66
15	Tembelang	771.40	-216.38	46,820.30	49,592	0.0436	2,039.50
16	Kesamben	470.78	-517.00	267,289.00	60,738	0.0534	14,259.98
17	Kudu	889.42	-98.36	9,674.69	29,466	0.0259	250.40
18	Ngusikan	670.12	-317.66	100,907.88	20,258	0.0178	1,795.56
19	Ploso	938.80	-48.98	2,399.04	39,997	0.0351	84.28
20	Kabuh	963.16	-24.62	606.14	38,345	0.0337	20.42
21	Plandaan	1,073.58	85.80	7,361.64	36,877	0.0324	238.46
	Kabupaten Jombang	987.78			1,138,473		311,278.57
		\bar{y}			n		

Perhitungan Indek Ketimpangan Williamson

No.	Kecamatan	2002					
		y_i	$y_i - y$	$(y_i - y)^2$	f_i	f_i/n	$(y_i - y)^2 \times f_i/n$
1	Bandar Kedung Mulyo	599.13	-416.74	173,672.23	45,128	0.0393	6,825.08
2	Peruk	755.31	-260.56	67,891.51	48,416	0.0422	2,862.43
3	Gudo	763.69	-252.18	63,594.75	52,532	0.0457	2,909.22
4	Diwek	673.28	-342.59	117,367.91	88,940	0.0775	9,090.29
5	Ngoro	945.22	-70.65	4,991.42	65,201	0.0568	283.41
6	Mojowarno	525.95	-489.92	240,021.61	80,641	0.0702	16,855.33
7	Bareng	810.14	-205.73	42,324.83	49,340	0.0430	1,818.55
8	Wonosalam	1,270.16	254.29	64,663.40	30,686	0.0267	1,727.94
9	Mojoagung	1,630.17	614.30	377,364.49	69,835	0.0608	22,949.08
10	Sumobito	677.90	-337.97	114,223.72	73,867	0.0643	7,347.47
11	Jogoroto	730.83	-285.04	81,247.80	53,868	0.0469	3,811.30
12	Peterongan	933.98	-81.89	6,705.97	56,417	0.0491	329.46
13	Jombang	2,575.39	1,559.52	2,432,102.63	119,546	0.1041	253,190.83
14	Megaluh	932.57	-83.30	6,938.89	37,093	0.0323	224.14
15	Tembelang	780.79	-235.08	55,262.61	50,247	0.0438	2,418.09
16	Kesamben	478.10	-537.77	289,196.57	61,095	0.0532	15,386.15
17	Kudu	898.43	-117.44	13,792.15	29,660	0.0258	356.23
18	Ngusikan	715.31	-300.56	90,336.31	20,306	0.0177	1,597.42
19	Ploso	944.27	-71.60	5,126.56	40,426	0.0352	180.48
20	Kabuh	944.25	-71.62	5,129.42	38,759	0.0338	173.13
21	Plandaan	1,116.03	100.16	10,032.03	36,965	0.0322	322.93
	Kabupaten Jombang	1,015.87			1,148,336		350,658.94
		y			n		

Pehitungan Indeks Williamson

$$I W (1995) = \frac{\sqrt{290.646,07}}{1.105,07} = \frac{539,17}{1.105,07} = 0,4879$$

$$I W (1996) = \frac{\sqrt{263.312,37}}{1.121,12} = \frac{513,14}{1.121,12} = 0,4577$$

$$I W (1997) = \frac{\sqrt{248.384,00}}{1.066,27} = \frac{498,38}{1.066,27} = 0,4674$$

$$I W (1998) = \frac{\sqrt{337.483,63}}{561,11} = \frac{580,94}{561,11} = 1,0353$$

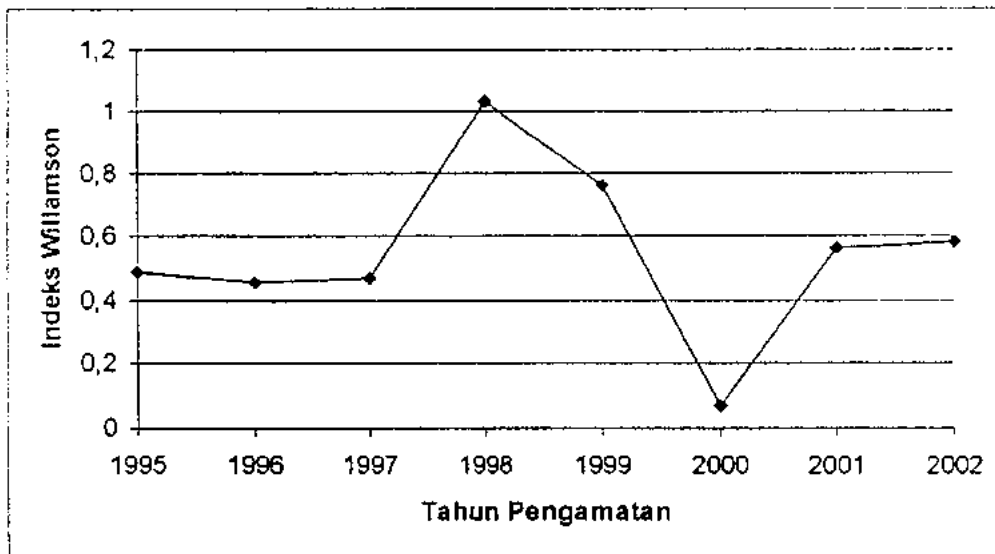
$$I W (1999) = \frac{\sqrt{298.718,35}}{715,42} = \frac{546,56}{715,42} = 0,7639$$

$$I W (2000) = \frac{\sqrt{3.742,91}}{869,84} = \frac{61,18}{869,84} = 0,0703$$

$$I W (2001) = \frac{\sqrt{311.278,57}}{987,78} = \frac{557,93}{987,78} = 0,5648$$

$$I W (2002) = \frac{\sqrt{350.658,94}}{1.015,87} = \frac{592,17}{1.015,87} = 0,5829$$

Tahun	Indeks Williamson
1995	0,4879
1996	0,4577
1997	0,4674
1998	1,0353
1999	0,7639
2000	0,0703
2001	0,5648
2002	0,5829
rata-rata	0,5538



Perhitungan Indeks Theil

No.	Kabupaten/Kota	1995						
		Yij	Yij / Y	Nij	Nij / N	(Yij/Y) / (Nij/N)	log ((Yij/Y) / (Nij/N))	(Yij/Y) X log ((Yij/Y)/(Nij/N))
1	Bandar Kedung Mulyo	473.20	0.4282	43,307	0.0401	10.6674	1.0281	0.4402
2	Perak	587.80	0.5319	46,107	0.0427	12.4462	1.0950	0.5825
3	Gudo	604.97	0.5474	50,653	0.0470	11.6601	1.0667	0.5840
4	Diwek	521.85	0.4722	83,364	0.0773	6.1114	0.7861	0.3712
5	Ngoro	785.77	0.7111	60,368	0.0560	12.7076	1.1041	0.7851
6	Mojowarno	394.79	0.3573	75,094	0.0696	5.1326	0.7103	0.2538
7	Barung	694.24	0.6282	47,901	0.0444	14.1494	1.1507	0.7229
8	Wonosalam	1,004.50	0.9090	27,793	0.0258	35.2848	1.5476	1.4067
9	Mojoagung	1,078.10	0.9756	63,345	0.0587	16.6158	1.2205	1.1907
10	Sumobito	453.12	0.4100	70,643	0.0655	6.2621	0.7967	0.3267
11	Jogoroto	512.71	0.4640	48,960	0.0454	10.2236	1.0096	0.4684
12	Peterongan	708.99	0.6416	52,863	0.0490	13.0937	1.1171	0.7167
13	Jombang	2,013.11	1.8217	108,515	0.1006	18.1114	1.2580	2.2916
14	Meguluh	739.10	0.6688	36,387	0.0337	19.8303	1.2973	0.8677
15	Tembelang	594.09	0.5376	47,319	0.0439	12.2572	1.0884	0.5851
16	Kesamben	633.89	0.5736	57,826	0.0536	10.7020	1.0295	0.5905
17	Kudu	713.91	0.6460	47,391	0.0439	14.7069	1.1675	0.7543
18	Ngusikan	0.00	0.0000	0	0.0000	0.0000	0.0000	0.0000
19	Ploso	726.91	0.6578	37,999	0.0352	18.6759	1.2713	0.8362
20	Kabuh	853.04	0.7719	37,372	0.0346	22.2842	1.3480	1.0406
21	Plandaan	1,003.75	0.9083	35,368	0.0328	27.7069	1.4426	1.3103
	Kabupaten Jombang	1,105.07		1,078,855				16.1252
		Y		N				TP

Perhitungan Indeks Theil

No.	Kabupaten/Kota	1996						
		Yij	Yij / Y	Nij	Nij / N	(Yij/Y) / (Nij/N)	log ((Yij/Y) / (Nij/N))	(Yij/Y) X log ((Yij/Y) / (Nij/N))
1	Bandar Kedung Mulyo	992.86	0.8856	43,620	0.0397	22.3008	1.3483	1.1941
2	Perak	607.78	0.5421	46,461	0.0423	12.8167	1.1078	0.6005
3	Gudo	613.16	0.5469	51,275	0.0467	11.7162	1.0688	0.5845
4	Diwek	543.04	0.4844	86,126	0.0784	6.1775	0.7908	0.3830
5	Ngoro	813.20	0.7253	60,893	0.0554	13.0842	1.1167	0.8100
6	Mojowarno	417.10	0.3720	76,297	0.0695	5.3561	0.7288	0.2712
7	Bareng	730.95	0.6520	47,793	0.0435	14.9844	1.1756	0.7665
8	Wonosalam	1,073.93	0.9579	28,506	0.0260	36.9111	1.5672	1.5012
9	Mojoagung	1,193.27	1.0644	66,351	0.0604	17.6201	1.2460	1.3262
10	Sumobito	478.40	0.4267	71,871	0.0654	6.5216	0.8144	0.3475
11	Jogoroto	537.85	0.4797	53,015	0.0483	9.9398	0.9974	0.4785
12	Peterongan	814.73	0.7267	53,487	0.0487	14.9239	1.1739	0.8531
13	Jombang	2,010.44	1.7932	110,254	0.1004	17.8654	1.2520	2.2452
14	Megaluh	821.04	0.7323	36,477	0.0332	22.0527	1.3435	0.9839
15	Tembelang	605.21	0.5398	47,679	0.0434	12.4364	1.0947	0.5909
16	Kesamben	660.07	0.5888	58,054	0.0529	11.1397	1.0469	0.6164
17	Kudu	753.12	0.6718	47,623	0.0434	15.4940	1.1902	0.7995
18	Ngusikan	0.00	0.0000	0	0.0000	0.0000	0.0000	0.0000
19	Ploso	741.00	0.6609	38,489	0.0350	18.8625	1.2756	0.8431
20	Kabuh	876.79	0.7821	37,887	0.0345	22.6737	1.3555	1.0601
21	Plandaan	1,009.87	0.9008	36,264	0.0330	27.2839	1.4359	1.2934
Kabupaten Jombang		1,121.12		1,098,422				17.5488
		Y		N				Tp

Perhitungan Indeks Theil

No.	Kabupaten/Kota	1997						
		Y _{ij}	Y _{ij} / Y	N _{ij}	N _{ij} / N	(Y _{ij} /Y) / (N _{ij} /N)	log ((Y _{ij} /Y) / (N _{ij} /N))	(Y _{ij} /Y) X log ((Y _{ij} /Y)/(N _{ij} /N))
1	Bandar Kedung Mulyo	505.13	0.4737	44,015	0.0398	11.9086	1.0759	0.5097
2	Perak	659.87	0.6189	46,906	0.0424	14.5979	1.1643	0.7205
3	Gudo	653.09	0.6125	51,469	0.0465	13.1670	1.1195	0.6857
4	Diwek	581.10	0.5450	86,347	0.0780	6.9833	0.8441	0.4600
5	Ngoro	835.01	0.7831	61,284	0.0554	14.1385	1.1504	0.9009
6	Mojowarno	463.64	0.4348	77,353	0.0699	6.2196	0.7938	0.3451
7	Bareng	805.98	0.7559	48,011	0.0434	17.4198	1.2410	0.9381
8	Wonosalam	1,159.17	1.0871	28,036	0.0253	42.9033	1.6325	1.7747
9	Mojogung	1,264.20	1.1856	66,815	0.0604	19.6337	1.2930	1.5330
10	Sumobito	523.29	0.4908	72,240	0.0653	7.5167	0.8760	0.4299
11	Jogoroto	561.90	0.5270	53,260	0.0481	10.9476	1.0393	0.5477
12	Peterongan	841.04	0.7888	54,086	0.0489	16.1358	1.2078	0.9527
13	Jombang	2,120.62	1.9888	111,690	0.1009	19.7019	1.2945	2.5745
14	Megaluh	843.76	0.7913	36,537	0.0330	23.9633	1.3795	1.0917
15	Tembelang	658.85	0.6179	47,994	0.0434	14.2449	1.1537	0.7128
16	Kesamben	725.79	0.6807	58,253	0.0526	12.9286	1.1116	0.7566
17	Kudu	786.63	0.7377	48,743	0.0441	16.7463	1.2239	0.9029
18	Ngusikan	0.00	0.0000	0	0.0000	0.0000	0.0000	0.0000
19	Ploso	775.01	0.7268	38,728	0.0350	20.7655	1.3173	0.9575
20	Kabuh	893.21	0.8377	38,113	0.0344	24.3187	1.3859	1.1610
21	Piandean	1,013.17	0.9502	36,558	0.0330	28.7581	1.4588	1.3861
	Kabupaten Jombang	1,066.27		1,106,438				19.3413
		Y		N				Tp

Perhitungan Indeks Theil

No.	Kabupaten/Kota	1998						
		Y _{ij}	Y _{ij} / Y	N _{ij}	N _{ij} / N	(Y _{ij} /Y) / (N _{ij} /N)	log ((Y _{ij} /Y) / (N _{ij} /N))	(Y _{ij} /Y) X log ((Y _{ij} /Y)/(N _{ij} /N))
1	Bandar Kedung Mulyo	519.29	0.9255	44,481	0.0399	23.1809	1.3651	1.2634
2	Perak	678.28	1.2088	47,130	0.0423	28.5764	1.4560	1.7600
3	Gudo	695.87	1.2402	51,690	0.0464	26.7311	1.4270	1.7697
4	Diwek	611.40	1.0896	86,457	0.0776	14.0417	1.1474	1.2503
5	Ngoro	873.04	1.5559	61,801	0.0555	28.0501	1.4479	2.2529
6	Mojowarno	491.59	0.8761	78,264	0.0702	12.4720	1.0959	0.9602
7	Bareng	823.04	1.4668	48,233	0.0433	33.8823	1.5300	2.2442
8	Wonosalam	1,204.29	2.1463	28,125	0.0252	85.0226	1.9295	4.1413
9	Mojoagung	1,357.83	2.4199	67,239	0.0604	40.0977	1.6031	3.8794
10	Sumobito	579.14	1.0321	72,355	0.0649	15.8932	1.2012	1.2398
11	Jogoroto	609.84	1.0868	53,504	0.0480	22.6321	1.3547	1.4724
12	Peterongan	908.43	1.6190	54,856	0.0492	32.8824	1.5170	2.4559
13	Jombang	2,131.27	3.7983	112,635	0.1011	37.5717	1.5749	5.9818
14	Megaluh	871.85	1.5538	36,445	0.0327	47.5006	1.6767	2.6052
15	Tembelang	693.04	1.2351	48,698	0.0437	28.2581	1.4511	1.7923
16	Kesamben	783.02	1.3955	59,430	0.0533	26.1615	1.4177	1.9783
17	Kudu	803.16	1.4314	49,112	0.0441	32.4721	1.5115	2.1635
18	Ngusikan	0.00	0.0000	0	0.0000	0.0000	0.0000	0.0000
19	Ploso	875.44	1.5602	38,829	0.0349	44.7678	1.6510	2.5758
20	Kabuh	903.11	1.6095	38,236	0.0343	46.8990	1.6712	2.6897
21	Plandaan	1,003.57	1.7885	36,630	0.0329	54.4009	1.7356	3.1042
	Kabupaten Jombang	561.11		1,114,150				47.5805
		Y		N				Tp

Perhitungan Indeks Theil

No.	Kabupaten/Kota	1999						
		Y _{ij}	Y _{ij} / Y	N _{ij}	N _{ij} / N	(Y _{ij} /Y) / (N _{ij} /N)	log ((Y _{ij} /Y) / (N _{ij} /N))	(Y _{ij} /Y) X log ((Y _{ij} /Y)/(N _{ij} /N))
1	Bandar Kedung Mulyo	542.28	0.7580	44,754	0.0399	18.9983	1.2787	0.9693
2	Perak	709.13	0.9912	47,417	0.0423	23.4485	1.3701	1.3581
3	Gudo	719.59	1.0058	51,885	0.0463	21.7454	1.3374	1.3452
4	Diwek	637.83	0.8915	86,756	0.0773	11.5273	1.0617	0.9466
5	Ngoro	916.83	1.2815	62,053	0.0553	23.1659	1.3648	1.7491
6	Mojowarno	517.25	0.7230	78,960	0.0704	10.2711	1.0116	0.7314
7	Bareng	850.81	1.1892	48,702	0.0434	27.3911	1.4376	1.7097
8	Wonosalam	1,213.05	1.6956	28,629	0.0255	66.4349	1.8224	3.0900
9	Mojoagung	1,491.16	2.0843	67,688	0.0603	34.5411	1.5383	3.2064
10	Sumobito	631.17	0.8822	72,800	0.0649	13.5937	1.1333	0.9999
11	Jogoroto	621.78	0.8691	53,340	0.0476	18.2771	1.2619	1.0967
12	Peterongan	913.42	1.2768	55,217	0.0492	25.9371	1.4139	1.8052
13	Jombang	2,242.98	3.1352	114,069	0.1017	30.8306	1.4890	4.6682
14	Megaluh	913.10	1.2763	36,624	0.0326	39.0910	1.5921	2.0320
15	Tembelang	720.90	1.0077	49,108	0.0438	23.0169	1.3620	1.3725
16	Kesamben	425.40	0.5946	60,145	0.0536	11.0897	1.0449	0.6213
17	Kudu	638.40	0.8923	49,307	0.0440	20.3006	1.3075	1.1667
18	Ngusikan	0.00	0.0000	0	0.0000	0.0000	0.0000	0.0000
19	Ploso	891.12	1.2456	39,234	0.0350	35.6121	1.5516	1.9327
20	Kabuh	917.41	1.2823	38,267	0.0341	37.5892	1.5751	2.0198
21	Plandaan	1,023.80	1.4310	36,766	0.0328	43.6609	1.6401	2.3471
	Kabupaten Jombang	715.42		1,121,721				35.1677
		Y		N				Tp

Perhitungan Indeks Theil

No.	Kabupaten/Kota	2000						
		Y _{ij}	Y _{ij} / Y	N _{ij}	N _{ij} / N	(Y _{ij} /Y) / (N _{ij} /N)	log ((Y _{ij} /Y) / (N _{ij} /N))	(Y _{ij} /Y) X log ((Y _{ij} /Y)/(N _{ij} /N))
1	Bandar Kedung Mulyo	563.11	0.6474	44,916	0.0398	16.2726	1.2115	0.7843
2	Perak	711.04	0.8174	47,591	0.0422	19.3925	1.2876	1.0526
3	Gudo	723.95	0.8323	52,139	0.0462	18.0223	1.2558	1.0452
4	Diwek	640.16	0.7360	86,952	0.0770	9.5560	0.9803	0.7214
5	Ngoro	920.45	1.0582	62,291	0.0552	19.1796	1.2828	1.3575
6	Mojowarno	520.14	0.5980	79,465	0.0704	8.4959	0.9292	0.5556
7	Bareng	880.79	1.0126	48,991	0.0434	23.3357	1.3680	1.3852
8	Wonosalam	1,220.09	1.4027	30,434	0.0270	52.0353	1.7163	2.4074
9	Mojoagung	1,510.31	1.7363	68,316	0.0605	28.6952	1.4578	2.5312
10	Sunohito	654.25	0.7521	73,264	0.0649	11.5909	1.0641	0.8004
11	Jogoroto	663.59	0.7629	53,472	0.0474	16.1079	1.2070	0.9208
12	Peterongan	917.78	1.0551	55,499	0.0492	21.4644	1.3317	1.4051
13	Jombang	2,353.84	2.7061	114,911	0.1018	26.5877	1.4247	3.8553
14	Megaluh	921.21	1.0591	36,833	0.0326	32.4628	1.5114	1.6006
15	Tembelang	753.77	0.8666	49,369	0.0437	19.8175	1.2970	1.1240
16	Kesamben	457.03	0.5254	60,391	0.0535	9.8228	0.9922	0.5213
17	Kudu	864.83	0.9942	49,561	0.0439	22.6493	1.3551	1.3473
18	Ngusikan	0.00	0.0000	0	0.0000	0.0000	0.0000	0.0000
19	Ploso	907.84	1.0437	39,806	0.0353	29.6023	1.4713	1.5356
20	Kabuh	941.85	1.0828	37,941	0.0336	32.2209	1.5081	1.6330
21	Plandaan	1,060.40	1.2191	36,885	0.0327	37.3151	1.5719	1.9162
	Kabupaten Jombang	869.84		1,129,027				28.5000
		Y		N				Tp

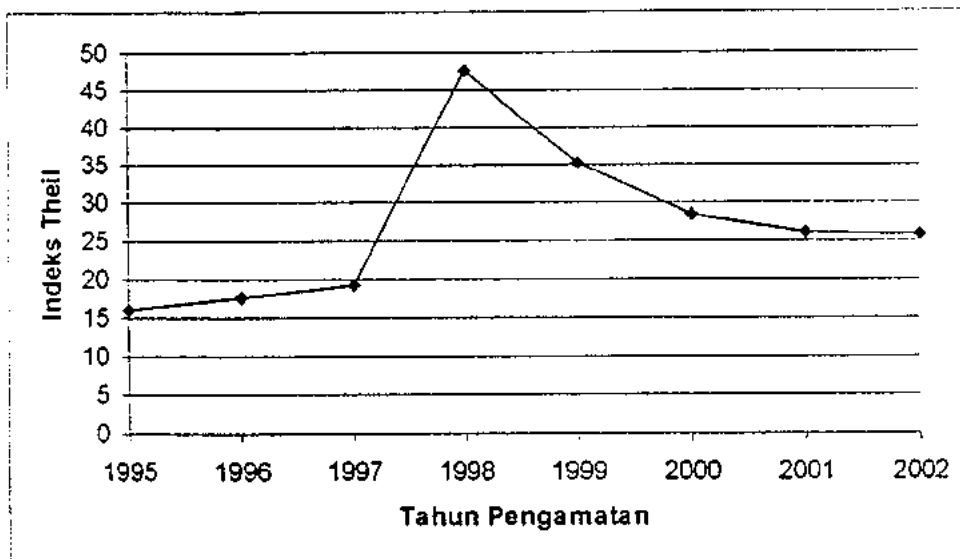
Perhitungan Indeks Theil

No.	Kabupaten/Kota	2001						
		Y _{ij}	Y _{ij} / Y	N _{ij}	N _{ij} / N	(Y _{ij} /Y) / (N _{ij} /N)	log ((Y _{ij} /Y) / (N _{ij} /N))	(Y _{ij} /Y) X log ((Y _{ij} /Y)/(N _{ij} /N))
1	Bandar Kedung Mulyo	574.22	0.5813	45,059	0.0396	14.6879	1.1670	0.6784
2	Perak	714.28	0.7231	47,837	0.0420	17.2095	1.2358	0.8936
3	Gudo	738.79	0.7479	52,255	0.0459	16.2950	1.2121	0.9065
4	Diwek	660.85	0.6690	87,363	0.0767	8.7184	0.9404	0.6292
5	Ngoro	930.99	0.9425	64,664	0.0568	16.5938	1.2199	1.1498
6	Mojowarno	509.04	0.5153	79,956	0.0702	7.3378	0.8656	0.4461
7	Bareng	807.64	0.8176	49,124	0.0431	18.9490	1.2776	1.0446
8	Wonosalam	1,248.06	1.2635	30,561	0.0268	47.0685	1.6727	2.1135
9	Mojowagung	1,530.84	1.5498	68,893	0.0605	25.6105	1.4084	2.1827
10	Sumobito	694.60	0.7032	73,794	0.0648	10.8487	1.0354	0.7281
11	Jogoroto	682.59	0.6910	53,574	0.0471	14.6848	1.1669	0.8063
12	Peterongan	920.65	0.9320	56,123	0.0493	18.9067	1.2766	1.1899
13	Jombang	2,464.03	2.4945	117,047	0.1028	24.2632	1.3849	3.4548
14	Megaluh	947.50	0.9592	36,950	0.0325	29.5547	1.4706	1.4107
15	Tembelang	771.40	0.7809	49,592	0.0436	17.9279	1.2535	0.9789
16	Kesumben	470.78	0.4766	60,738	0.0534	8.9335	0.9510	0.4533
17	Kudu	889.42	0.9004	29,466	0.0259	34.7895	1.5414	1.3880
18	Ngusikan	670.12	0.6784	20,258	0.0178	38.1258	1.5812	1.0727
19	Ploso	938.80	0.9504	39,997	0.0351	27.0525	1.4322	1.3612
20	Kabuh	963.16	0.9751	38,345	0.0337	28.9502	1.4617	1.4252
21	Plandaan	1,073.58	1.0869	36,877	0.0324	33.5538	1.5257	1.6583
	Kabupaten Jombang	987.78		1,138.473				25.9716
		Y		N				Tp

Perhitungan Indeks Theil

No.	Kabupaten/Kota	2002						
		Y _{ij}	Y _{ij} / Y	N _{ij}	N _{ij} / N	(Y _{ij} /Y) / (N _{ij} /N)	log ((Y _{ij} /Y) / (N _{ij} /N))	(Y _{ij} /Y) X log ((Y _{ij} /Y)/(N _{ij} /N))
1	Bandar Kedung Mulyo	599.13	0.5898	45,128	0.0393	15.0074	1.1763	0.6938
2	Perak	755.31	0.7435	48,416	0.0422	17.6347	1.2464	0.9267
3	Gudo	763.69	0.7518	52,532	0.0457	16.4333	1.2157	0.9139
4	Diwek	673.28	0.6628	88,940	0.0775	8.5572	0.9323	0.6179
5	Ngoro	945.22	0.9305	65,201	0.0568	16.3874	1.2143	1.1300
6	Mojowarno	525.95	0.5177	80,641	0.0702	7.3726	0.8676	0.4492
7	Bareng	810.14	0.7975	49,340	0.0430	18.5606	1.2686	1.0117
8	Wonosalam	1,270.16	1.2503	30,686	0.0267	46.7896	1.6701	2.0882
9	Mojowagung	1,630.17	1.6047	69,835	0.0608	26.3870	1.4214	2.2809
10	Sunobito	677.90	0.6673	73,867	0.0643	10.3740	1.0159	0.6780
11	Jogoroto	730.83	0.7194	53,868	0.0469	15.3362	1.1857	0.8530
12	Peterongan	933.98	0.9194	56,417	0.0491	18.7136	1.2722	1.1696
13	Jombang	2,575.39	2.5352	119,546	0.1041	24.3522	1.3865	3.5151
14	Megaluh	932.57	0.9180	37,093	0.0323	28.4198	1.4536	1.3344
15	Tembelang	780.79	0.7686	50,247	0.0438	17.5653	1.2447	0.9566
16	Kesamben	478.10	0.4706	61,095	0.0532	8.8459	0.9467	0.4456
17	Kudu	898.43	0.8844	29,660	0.0258	34.2408	1.5345	1.3571
18	Ngusikan	715.31	0.7041	20,306	0.0177	39.8200	1.6001	1.1267
19	Ploso	944.27	0.9295	40,426	0.0352	26.4038	1.4217	1.3215
20	Kabuh	944.25	0.9295	38,759	0.0338	27.5388	1.4399	1.3384
21	Plandaan	1,116.03	1.0986	36,965	0.0322	34.1284	1.5331	1.6843
	Kabupaten Jombang	1,015.87		1,148,336				25.8926
		Y		N				T _p

Tahun	Indeks Theil
1995	16,1252
1996	17,5488
1997	19,3413
1998	47,5805
1999	35,1677
2000	28,5000
2001	25,9716
2002	25,8926
rata-rata	27,0160



Perhitungan Korelasi Pearson

Tahun	Laju Pertumbuhan X	Indeks Williamson Y	X ²	Y ²	XY
1995	6,18	0,4879	38,1924	0,238046	3,015222
1996	5,88	0,4577	34,5744	0,209489	2,691276
1997	3,24	0,4674	10,4976	0,218463	1,514376
1998	-12,8	1,0353	163,84	1,071846	-13,2518
1999	0,864	0,7639	0,746496	0,583543	0,66001
2000	3,06	0,0703	9,3636	0,004942	0,215118
2001	3,60	0,5648	12,96	0,318999	2,03328
2002	3,59	0,5829	12,8881	0,339772	2,092611
Jumlah	13,614	4,4302	283,0626	2,985101	-1,02995

$$r = \frac{8(15,9175) - (16,55)(7,7361)}{\sqrt{8(455,0035) - (16,55)^2} \sqrt{8(7,4840) - (7,7361)^2}}$$

$$= \frac{-0,6927}{9,1167} = -0,0760$$

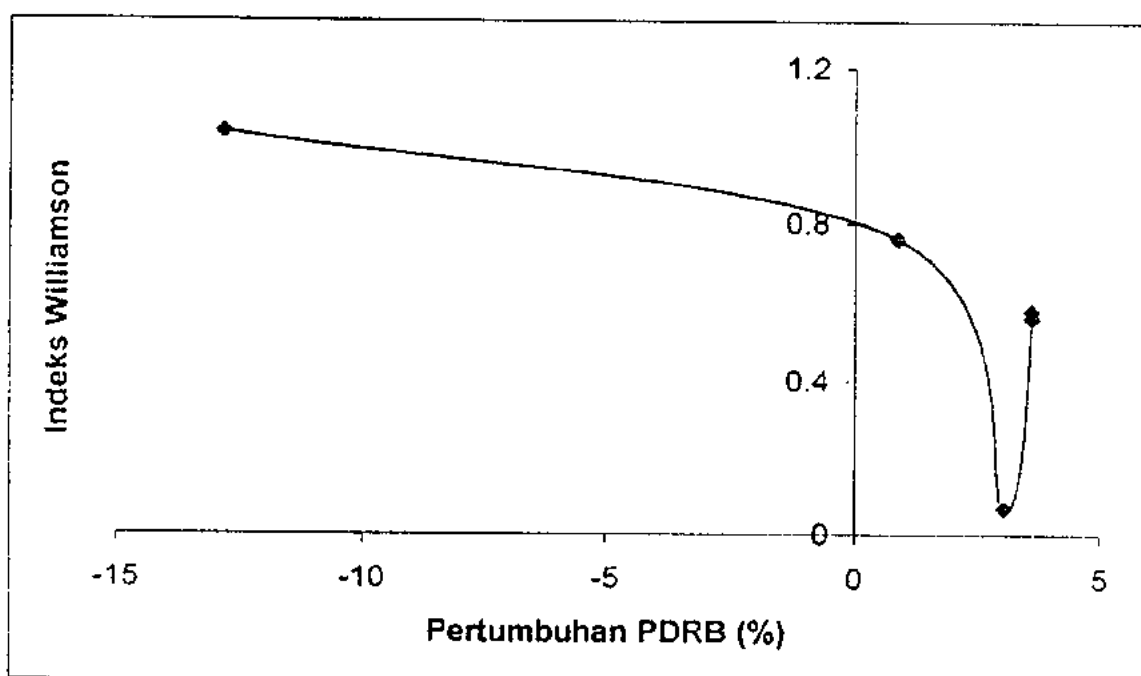
Tahun	Laju Pertumbuhan X	Indeks Theil Y	X ²	Y ²	XY
1995	6,18	16,1252	38,1924	260,0221	99,65374
1996	5,88	17,5488	34,5744	307,9604	103,1869
1997	3,24	19,3413	10,4976	374,0859	62,66581
1998	-12,8	47,5805	163,84	2263,904	-609,03
1999	0,864	35,1677	0,746496	1236,767	30,38489
2000	3,06	28,5000	9,3636	812,25	87,21
2001	3,60	25,9716	12,96	674,524	93,49776
2002	3,59	25,8926	12,8881	670,4267	92,95443
Jumlah	13,614	216,1277	283,0626	6599,94	-39,4768

$$r = \frac{8(7,3100) - (16,55)(3,7519)}{\sqrt{8(455,0035) - (16,55)^2} \sqrt{8(1,7623) - (3,7519)^2}}$$

$$= \frac{-3,6141}{8,5339} = -0,4235$$

Pembuktian Hipotesis Kuznets

Tahun	Indeks Williamson	Laju Pertumbuhan
1995	0.4879	6.18
1996	0.4577	5.88
1997	0.4674	3.24
1998	1.0353	-12.8
1999	0.7639	0.864
2000	0.0703	3.06
2001	0.5648	3.60
2002	0.5829	3.59
rata-rata	0.5538	1.70



Tahun	Indeks Theil	Laju Pertumbuhan
1995	16.1252	6.18
1996	17.5488	5.88
1997	19.3413	3.24
1998	47.5805	-12.8
1999	35.1677	0.864
2000	28.5000	3.06
2001	25.9716	3.60
2002	25.8926	3.59
rata-rata	27.0160	1.70

