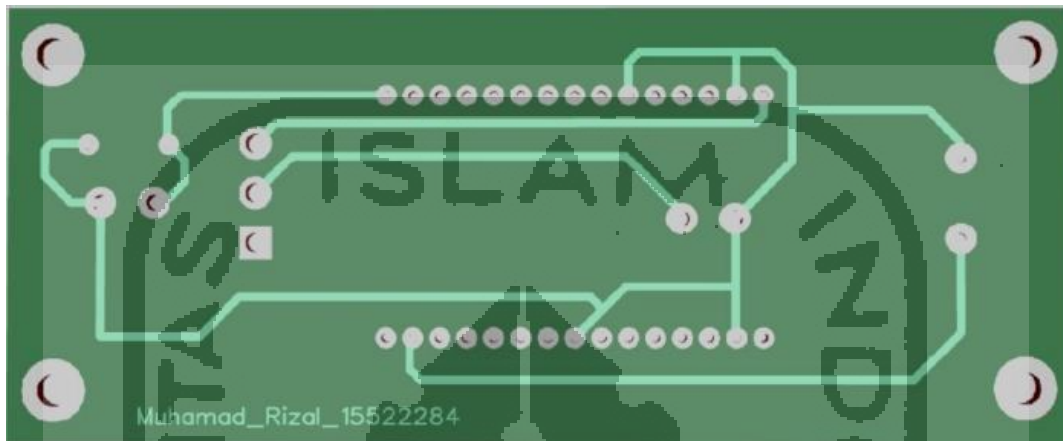


LAMPIRAN



```

Bismillah_Tugas_Akhir_Rizal
// ===== Bismillah TA 2019 ===== //
// ===== Program Deteksi Gempa Berbasis Internet Of Things ===== //
// ===== Mulai ===== //
// ===== //

//Library
#include <ESP8266WiFi.h>
#include <FirebaseArduino.h>
#include <SimpleKalmanFilter.h>
//Penutup Library

//Pendefinisian Firebase
#define FIREBASE_HOST "earthquator-947b7.firebaseio.com"
#define FIREBASE_AUTH "ig2LwjQKqjXo4y4qFNnsrcMWqBA0u6n2Qvus4CcU"
#define WIFI_SSID "MyASUS"
#define WIFI_PASSWORD "12345678"
//Penutup

//Setup
SimpleKalmanFilter simpleKalmanFilter(2, 2, 0.01);
const int PIEZO_PIN = A0; // Piezo output
void speedBuzzer(int waktu);
const int buzzer_pin = D1;
int ulang = 0;
//Penutup Setup

//Setup Prediksi
float Rberbahaya = 138.6;
float Rtidakberbahaya = 33.4;
float Sberbahaya = 56.9;
float Stidakberbahaya = 20.5;
float Hberbahaya;
float Htidakberbahaya;

```

