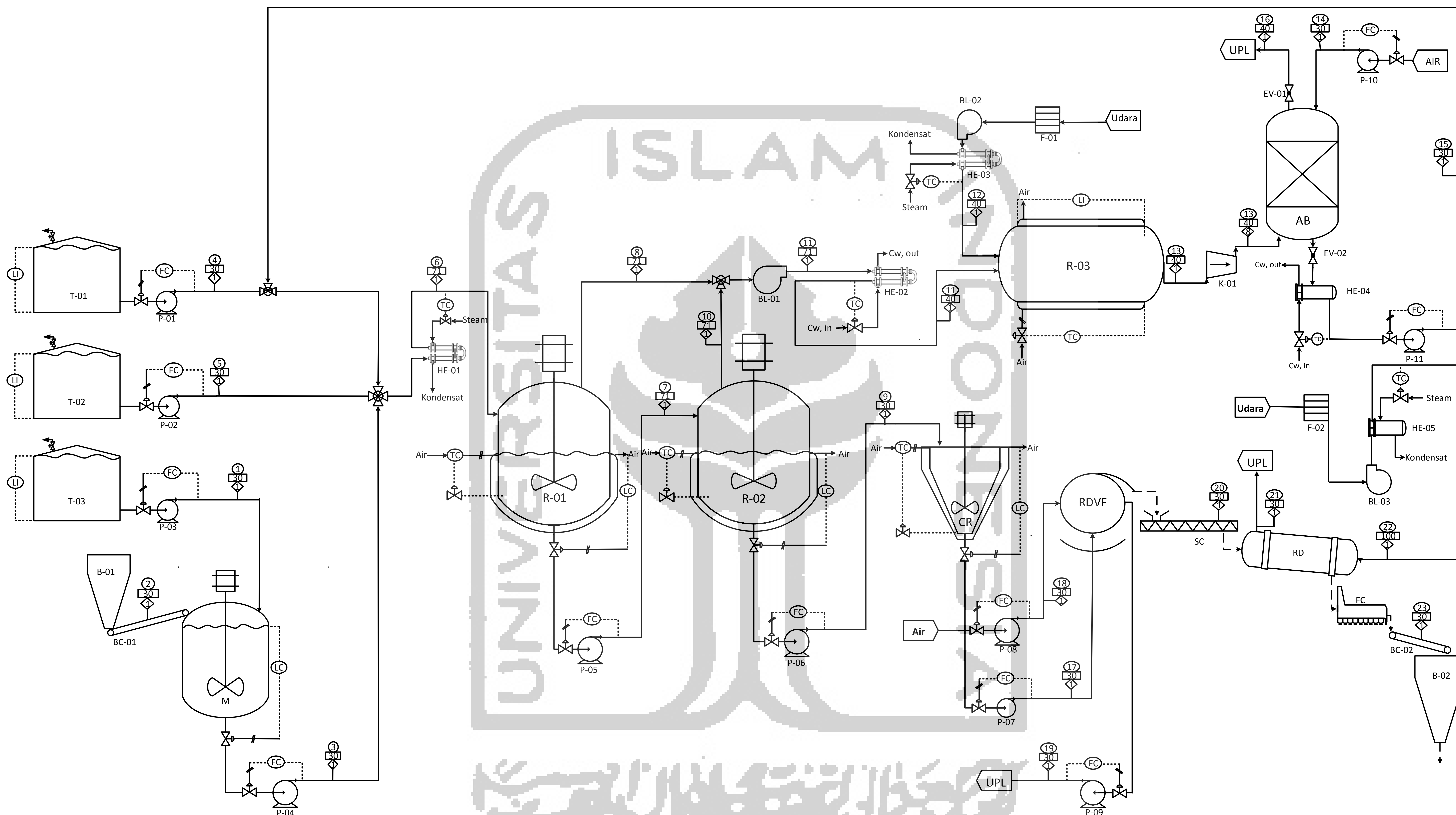


PROCESS ENGINEERING FLOW DIAGRAM

PRARANCANGAN PABRIK ASAM OKSALAT DIHIDRAT DARI GLUKOSA DAN ASAM NITRAT


KAPASITAS 11.000 TON/TAHUN



Komponen	Arus (kg/jam)																						
	1	2	3	4	5	6	7	8	9	10	11	12	13	14	15	16	17	18	19	20	21	22	23
C6H12O6	-	-	-	-	868.2	868.2	478.1	-	143.4	-	-	-	-	-	-	143.4	-	140.6	2.869	-	-	2.869	
HNO3	-	-	-	1823	-	1823	1004	-	301.2	-	-	-	-	867.5	-	301.2	-	295.2	6.024	-	6.024	-	
H2C2O4	-	-	-	-	-	-	585.1	-	1087	-	-	-	-	-	-	108.7	-	106.5	2.174	-	-	2.174	
H2C2O4.2H2O	-	-	-	-	-	-	-	-	-	-	-	-	-	-	-	1370	-	-	1370	-	-	1370	
H2O	14.17	-	14.17	858.0	165.4	1052	1272	-	1472	-	-	-	532.2	408.3	-	1081	215.0	1274	21.62	-	1059	-	
H2SO4	694.4	-	694.4	-	-	1389	694.4	-	694.4	-	-	-	-	-	-	694.4	-	680.6	13.89	-	-	13.89	
V2O5	-	0.0694	0.0694	-	-	0.1389	-	-	-	-	-	-	-	-	-	0.0694	-	0.0681	0.0014	-	-	-	
NO	-	-	-	-	-	-	-	390.1	-	334.7	724.8	-	72.48	-	-	279.0	-	-	-	-	-	-	
NO2	-	-	-	-	-	-	-	-	-	-	-	-	1000	-	-	50.01	-	-	-	-	-	-	
O2	-	-	-	-	-	-	-	-	-	-	-	-	850.4	502.5	-	502.5	-	-	-	-	-	-	
N2	-	-	-	-	-	-	-	-	-	-	-	3199	3199	-	-	3199	-	-	-	-	-	-	
Udara panas	-	-	-	-	-	-	-	-	-	-	-	-	-	-	-	-	-	-	-	-	1037.4	-	
Total	708.6	0.0694	708.7	2681	1034	5132	4033	390.1	3699	334.7	724.8	4049	4774	532.2	1276	4031	3699	215.0	2497	1417	1037.4	1065	1389

KETERANGAN ALAT	
BL	Blower
EV	Expansion Valve
BC	Belt Conveyor
SC	Screw Conveyor
F	Filter Bag
HE	Heat Exchanger
K	Kompresor
M	Mixer
P	Pompa
R	Reaktor
CR	Crystallizer
AB	Absorber
RD	Rotary Dryer
FC	Fan Cooler
RDVDF	Rotary Drum Vacuum Filter
B	Bin
T	Tangki Penyimpanan

KETERANGAN SIMBOL	
	Nomor Arus
	Suhu, °C
	Tekanan, atm
	Airan Listrik
	Udara Tekan
	Control Valve
	Piping
	Non Piping



JURUSAN TEKNIK KIMIA
FAKULTAS TEKNOLOGI INDUSTRI
UNIVERSITAS ISLAM INDONESIA
YOGYAKARTA

PROCESS ENGINEERING FLOW DIAGRAM
PRARANCANGAN PABRIK ASAM OKSALAT DARI
GLUKOSA DAN ASAM NITRAT
KAPASITAS 11.000 TON/TAHUN

Disusun oleh:

1. Regita Dewi Cahyani
2. Rizki Mila Arista Putri

15521173

15521193

Dosen Pembimbing:

1. Ir. H. Abdul Malik Khaliq, MM.
2. Dr. Khamdan Cahyari, ST., MSc.