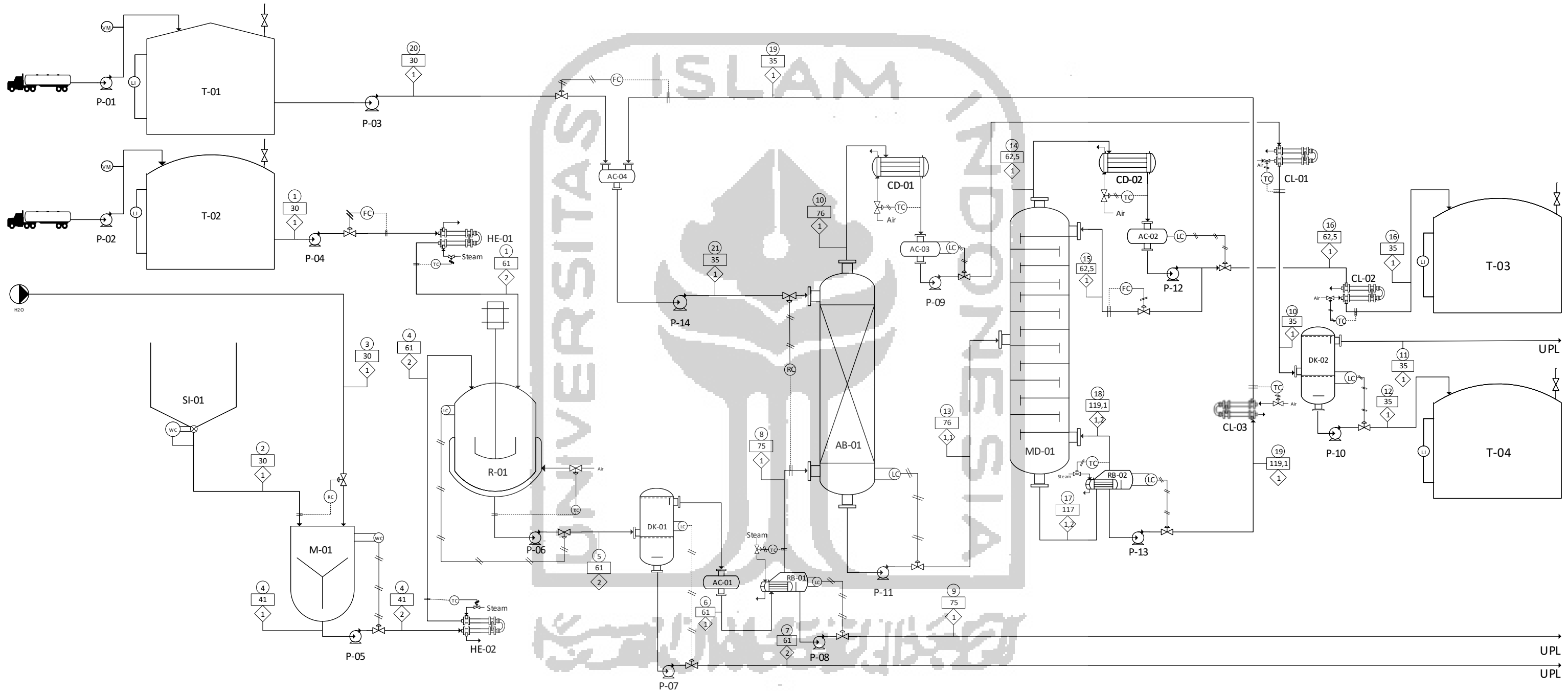


PROCESS ENGINEERING FLOW DIAGRAM PABRIK KLOROFORM DARI KALSIMUM HIPOKLORIT DAN ASETON DENGAN KAPASITAS 30.000 TON/TAHUN



Komponen	Nomor Arus																				
	1	2	3	4	5	6	7	8	9	10	11	12	13	14	15	16	17	18	19	20	21
C3H6O	3134,7529				1291,8982	1278,9792	12,9190	1278,979193													
Ca(OCl)2		7015,5111		7015,5111	210,46533	0	210,4653														
CHCl3				3787,8788		3750	37,8788	3750			3750										
Ca(C2H3O2)2				2509,3348		0	2509,3348														
Ca(OH)2				2350,6869		0	2350,6869														
NaCl		2505,5397		2505,5397	2505,5397	0	2505,5397														
C6H12O												1421,088	106,67191	64,039274	42,63264	6885,6014	5507,15	1378,46	42,6326	1421,09	
H2O	31,664171	501,10794	20874,141	21375,249	21406,913	3043,5766	18363,3361	228,0164419	2815,560131	118,60714	80,728352	37,878788	153,36048	277,05416	166,32632	110,72784	341,00676	298,374	42,6326	1,31854	43,9512
total	3166,4171	10022,159	20874,141	30896,299	34062,716	8072,5558	25990,161	5256,995635	2815,560131	3868,6071	80,728352	3787,8788	2853,4277	3583,8835	2151,5438	1432,3397	7226,6081	5805,52	1421,09	43,9512	1465,04

KETERANGAN	
AB = Absorber	T = Tangki
AC = Akumulator	FC = Flow Controller
CD = Condensor	LC = Level Controller
CL = Cooler	LI = Level Indicator
DK = Dekanter	RC = Ratio Controller
FE = Feeder	TC = Temperatur Controller
HE = Heater	VM = Volume meter
M = Mixer	— = Pipa Proses
MD = Menara Distilasi	— = Pipa Udara Tekan
R = Reaktor	○ = Nomor Arus
RB = Reboiler	□ = Suhu, °C
SC = Screw Conveyor	◇ = Tekanan, atm
SL = Silo	

**JURUSAN TEKNIK KIMIA
FAKULTAS TEKNOLOGI INDUSTRI
UNIVERSITAS ISLAM INDONESIA
YOGYAKARTA**

**PROCESS ENGINEERING FLOW DIAGRAM
PRA RANCANGAN PABRIK KLOROFORM DARI
KALSIMUM HIPOKLORIT DAN ASETON
DENGAN KAPASITAS 30.000 TON/TAHUN**

Disusun oleh :
1. BUDIMAN BATARA 15521118
2. DWI ADIPRASETYA 15521161

Dosen Pembimbing :
1. Dr. SUHARNO RUSDI
2. MUFLIH ARISA ADNAN, S.T., M.SC.