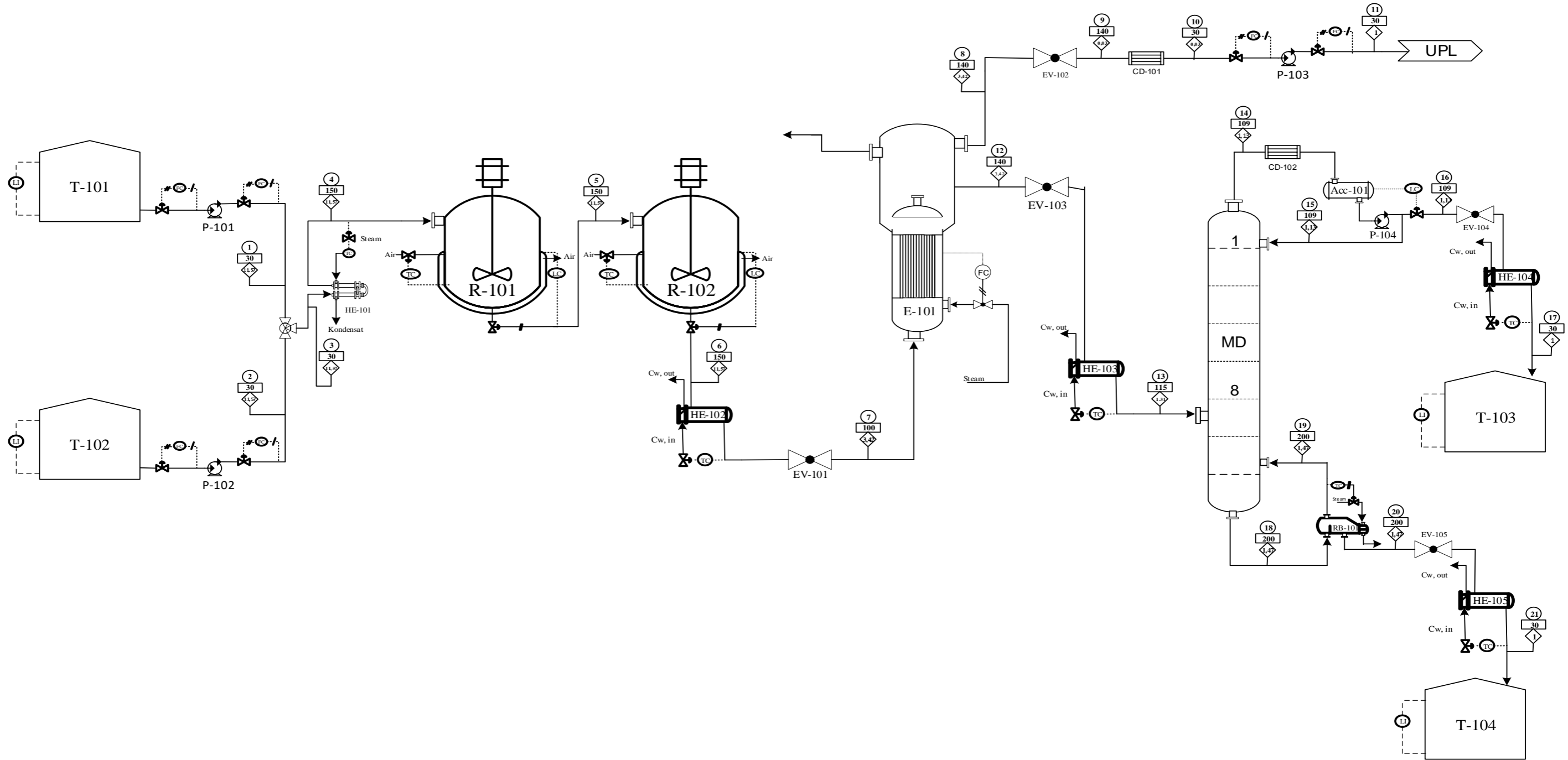


# PRA RANCANGAN PABRIK PABRIK PROPILEN GLIKOL DARI PROPILEN OKSIDA DENGAN PROSES HIDROLISIS KAPASITAS 27.000 TON/TAHUN



Nomor Arus	Satuan	1	2	3	4	5	6	7	8	9	10	11	12	13	14	15	16	17	18	19	20	21
Suhu	°C	30	30	30	150	150	150	100	140	140	30	30	140	115,93	109	109	109	30	200,45	200,45	200,45	30
Tekanan	atm	11,57	11,57	11,57	11,57	11,57	11,57	3,42	3,42	0,03	0,03	1	3,42	1,31	1,13	1,13	1,13	1	1,47	1,47	1,47	1
Laju Alir Massa Total	kg/jam	2904,659	11556,349	14461,008	14461,008	14461,008	14461,008	14461,008	10418,544	10418,544	10397,874	10397,874	4042,464	4042,464	636,532	9,122	627,410	627,410	13774,893	10359,839	3415,054	3415,054
Laju Alir Massa Komponen																						
Propilen Oksida	kg/jam	2890,208	-	2890,208	2890,208	958,682	317,923	317,923	11,827	11,827	0,00019	0,0002	306,095	306,095	301,717	4,324	297,393	297,393	2795,984	2787,281	8,702	8,702
Air	kg/jam	14,451	11556,349	11570,800	11570,800	11009,425	10823,196	10823,196	10397,513	10397,513	10397,513	10397,513	425,683	425,683	304,822	4,368	300,454	300,454	870,745	745,517	125,229	125,229
Propilen Glikol	kg/jam	-	-	-	-	2209,533	2942,517	2942,517	9,184	9,184	0,360	0,360	2933,333	2933,333	29,760	0,426	29,333	29,333	3658,464	754,464	2904,000	2904,000
Di-Propilen Glikol	kg/jam	-	-	-	-	283,368	377,372	377,372	0,019	0,019	0,000004	0,000004	377,353	377,353	0,233	0,003	0,230	0,230	6449,701	6072,578	377,123	377,123
Total		2904,659	11556,349	14461,008	14461,008	14461,008	14461,008	14461,008	10418,544	10418,544	10397,874	10397,874	4042,464	4042,464	636,532	9,122	627,410	627,410	13774,893	10359,839	3415,054	3415,054

ALAT	KETERANGAN	SIMBOL	KETERANGAN
ACC	Accumulator	(LC)	Level Controller
CD	Condenser	(LI)	Level Indikator
HE	Heat Exchanger	(TC)	Temperature Controller
MD	Menara Disilasi	(N.A)	Nonion Ais
E	Evaporator	(C)	Suhu, C
R	Reaktor	(atm)	Tekanan, atm
RB	Reboiler	(CV)	Control Valve
EV	Expansion Valve	(E.C)	Electric Connection
T	Tangki	(P)	Piping
P	Pompa	(U)	Udara Tekan

UNIVERSITAS ISLAM INDONESIA

JURUSAN TEKNIK KIMIA  
FAKULTAS TEKNOLOGI INDUSTRI  
UNIVERSITAS ISLAM INDONESIA  
JOGJAKARTA

PROCESS ENGINEERING FLOW DIAGRAM  
PABRIK Propilen Glikol  
KAPASITAS 27.000 TON/TAHUN

Dikerjakan oleh:  
1. Wisam Adi Kusuma (15521119)  
2. Faldy Wahyu Satioyoji (15521124)

Dosen pembimbing:  
1. Ir. Daryono MSL, C.Text ATIL  
2. Muflih Arisan Adnan ST., M.Sc.