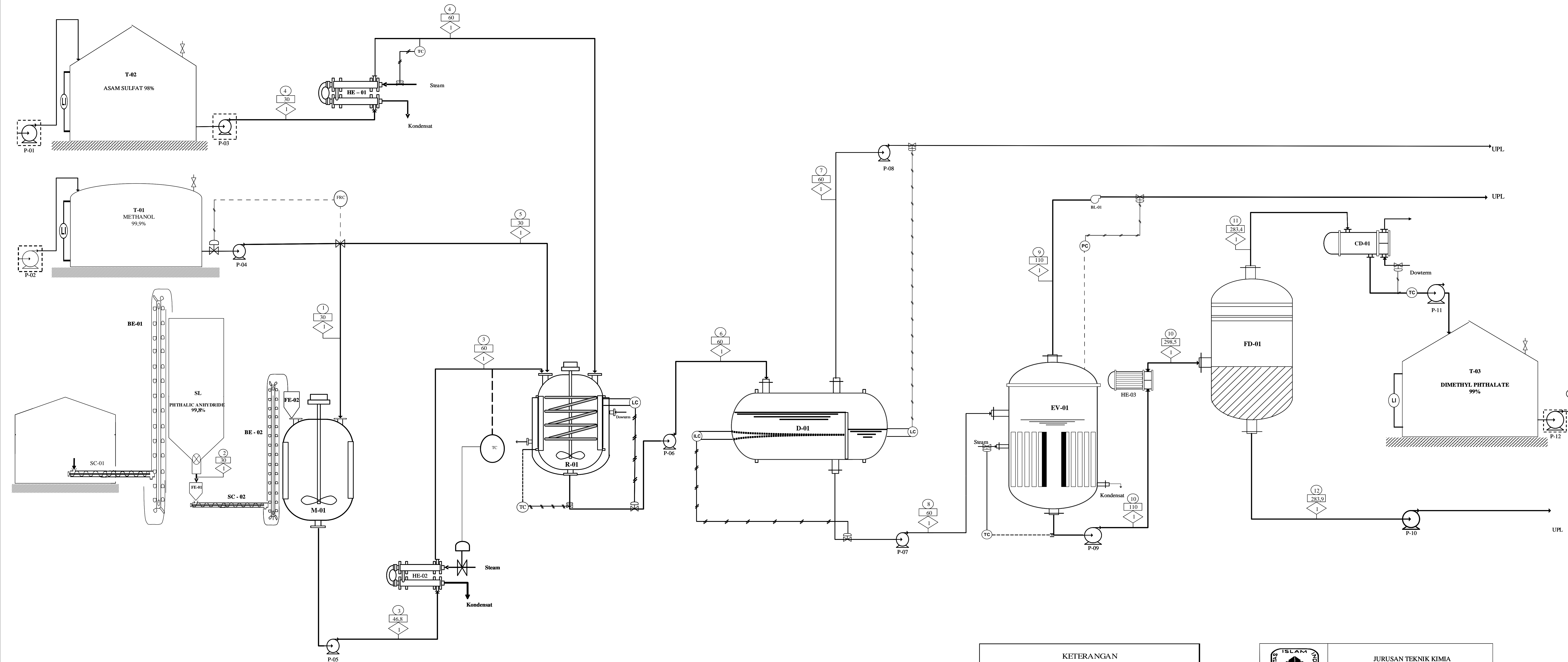


PROCESS ENGINEERING FLOW DIAGRAM
PRARANCANGAN PABRIK DIMETHYL PHTHALATE DARI PHTHALIC ANHYDRIDE DAN METHANOL


KAPASITAS PRODUKSI : 35.000 TON / TAHUN



ARUS MASSA (Kg/jam)

Komponen	NOMOR ARUS											
	1	2	3	4	5	6	7	8	9	10	11	12
CH ₃ OH	848,7734	-	848,7734	-	933,6508	169,7547	84,7855	84,9692	84,9692	-	-	-
H ₂ O	0,8496	7,8669	8,7165	0,1949	0,9346	463,4093	463,4093	-	-	-	-	-
C ₆ H ₄ (CO) ₂ O	-	3925,5771	3925,5771	-	-	196,2789	-	196,2789	-	196,2789	19,6279	176,6510
C ₆ H ₄ (COOCH ₃) ₂	-	-	-	-	-	4888,4045	-	4888,4045	-	4888,4045	4399,5640	488,8404
H ₂ SO ₄	-	-	-	51,9874	-	51,9874	51,9874	-	-	-	-	-
Jumlah	849,6231	3933,4440	4783,0671	52,1822	934,5854	5769,8347	600,1821	5169,6525	84,9692	5084,6833	4419,1919	665,4914

KETERANGAN		
FE	Feeder	FMR Flowmeter & recorder
BE	Bucket elevator	FRC Flow ratio control
CD	Kondensor	ILC Interface level ctrl LC Level control
D	Dekanter	LI Level indicator
EV	Evaporator	PC Pressure control
HE	Heater	TC Temperature ctrl
M	Mixer	○ Nomor arus
FD	Flash Drum	□ Temperatur (°C)
P	Pompa	◇ Tekanan (atm)
R	Reaktor	— Pipa
SC	Screw conveyor	↗ Udara tekan
SL	Silo	--- Sambungan listrik
T	Tangki	



UNIVERSITAS ISLAM INDONESIA

JURUSAN TEKNIK KIMIA
 FAKULTAS TEKNOLOGI INDUSTRI
 UNIVERSITAS ISLAM INDONESIA
 YOGYAKARTA
 2019

PROCESS ENGINEERING FLOW DIAGRAM
 PRARANCANGAN PABRIK DIMETHYL PHTHALATE
 DARI PHTHALIC ANHYDRIDE DAN METHANOL
 DENGAN KAPASITAS 35.000 TON / TAHUN

DISUSUN OLEH :

1. SITI FATMAH (15521066)
 2. JULIA RESANTI (15521070)

DOSEN PEMBIMBING :

1. Dr. Arif Hidayat, S.T., M.T.
 2. Ajeng Yulianti D. L., S.T., M.T.