

DAFTAR PUSTAKA

- Ali, Syaiful, dan Jogiyanto Hartono, 2003. *Pengaruh Pemilihan Metode Akuntansi Terhadap Tingkat Underpricing Saham Perdana*, Jurnal Riset Akuntansi Indonesia, Vol. 6, No.1, Januari. 41 – 53.
- Beatty, R. 1989. *Auditor Reputation and The Pricing of Initial Public Offering*, The Accounting Review 64 (October) : 693 – 709.
- Carter R. and Manaster S, 1990, *Initial Public Offering und Underwriter Reputation*, The Journal of Finance, Vol XLV, No 4, September.
- Daljono, 2000. *Analisis Faktor – Faktor yang Mempengaruhi Initial Return Saham yang Listing di BEI Tahun 1990 – 1997*, Makalah Simposium Nasional Akuntansi (SNA) III, September, 556 – 571.
- Darmadji, Tjiptono dan Hendy M Fakhruddin, 2001. *Pasar Modal di Indonesia (Pendekatan Tanya Jawab)*, edisi pertama, Salemba Empat, Jakarta.
- Djarwanto PS, dan Pangestu Subagyo, 2000. *Statistik Induktif*, edisi keempat, cetakan kelima, BPFE, Yogyakarta.
- Ernyan, dan Suad Husnan, 2002. *Perbandingan Underpricing Penerbitan Saham Perdana Perusahaan Keuangan dan Non Keuangan di Pasar Modal Indonesia : Pengujian Hipotesis Asimetri Informasi*, Jurnal Ekonomi dan Bisnis Indonesia, Vol. 17, No. 4, Oktober. 372 – 383.
- Ghozali, Imam, dan Mudrik Al Mansur, 2002. *Analisis Faktor - faktor yang Mempengaruhi Tingkat Underpriced di Bursa Efek Jakarta*, Jurnal Bisnis dan Akuntansi, Vol. 4, No.1, April. 74 – 88
- Gujarati Damodar, 1999. *Ekonometrika Dasar*, Penerbit Erlangga, cet 6.
- Gumanti, Tatang Ary, 2002. *Underpricing dan Biaya - Biaya disekitar IPO*, Wahana Vol. 5, No 2 Agustus 2002, pp 135 - 147
- Jogiyanto, 2000. *Teori Portofolio dan Analisis Investasi*, edisi pertama, cetakan kedua, BPFE, Yogyakarta.

- Kunz, R.M and Aggarwal, 1994. *Why IPO are Underpriced ; evidence from Swizerland*, Journal of Banking and Finance.
- Husnan, Suad, 2001. *Dasar dasar Teori Portofolio dan Analisis Sekuritas* edisi kedua, UPP AMP YKPN, Yogyakarta.
- McGuinness, Paul. 1992. *An Examination of The Pricing of Initial Public Offering in Hongkong 1980 - 1990*, Journal of Business Finance and Accounting, 19(2), Januari: 165 – 186
- Menon, Khrisnagopal and David William 1991. *Auditor Cridibility and Initial Public Offerings*, Accounting Review vol.66 No 2 April: 313 - 322
- Mukti, Anekda, 2002. *Perilaku Harga Saham Baru di Bursa Efek Jakarta Periode 1999 - 2001*. Tesis Program Magister Manajemen, UGM.
- Nasirwan, 2000. *Reputasi Penjamin Emisi, Return Awal, Return 15 Hari Sesudah IPO, dan Kinerja Perusahaan Satu Tahun Sesudah IPO di BEJ* Makalah Simposium Nasional Akuntansi (SNA) III, September. 573 – 598.
- Nur Indriantono dan Siti Nurhidayati, 1998. Analisis Faktor - Faktor yang Berpengaruh Terhadap Tingkat Underpricing pada Penawaran Perdana di BEJ, Jurnal Ekonomi dan Bisnis Indonesia, Vol 13.
- Payamta, 2000. *Pengaruh Variabel Variabel Keuangan dan Signaling Terhadap Penentuan Harga Pasar Saham di Bursa Efek Jakarta*, Jurnal Akuntansi dan Auditing Indonesia, Vol. 4, No. 2, Desember. 153 – 179.
- Rizka, Yudi, 1995. *Analisis Faktor-faktor yang Mempengaruhi Underpricing pada Penawaran Emisi yang Listing : di BEJ Periode 1989 - 1994*, Tesis Program Magister Manajemen, UGM.
- Rodoni, Ahmad, 2002. *Penawaran Saham Perdana : Pengalaman di Bursa Efek Jakarta 1990 - 1998*, Jurnal Ekonomi dan Bisnis Indonesia, Vol 17, No 4, Oktober. 398 – 419.
- Rosyati, dan Arifin Sebeni, 2002. *Analisis Faktor-Faktor Yang Mempengaruhi Underpricing Saham Pada Perusahaan Go Publik di BEJ (Tahun 1997 - 2000)*, Makalah Simposium Nasional Akuntansi (SNA) V. 286 – 296.

Sunariyah, 2000. *Pengantar Pengetahuan Pasar Modal*, Edisi kedua, UPP AMP YKPN, Yogyakarta..

Sitompul, Asril, 1996. *Pasar Modal (Penawaran Umum dan Permasalahannya)* cetakan pertama, PT Citra Aditya Bakti, Bandung..

Widoatmodjo, Sawidji, 1996. *Cara Sehat Investasi di Pasar Modal (Pengetahuan Dasar)*, cetakan kedua, PT Jurnalindo Aksara Grafika, Jakarta.

LAMPIRAN

LAMPIRAN 1
PERUSAHAAN GO PUBLIK PERIODE 2001 – 2003

No	Tanggal IPO	Nama Perusahaan	Kode	Industri	Harga IPO	Harga Buka	Harga Tutup
1	08/01/2001	Tempo Inti Media Tbk	TMPO	Advertising, Printing, & Media	300	325	495
2	10/01/2001	Bank Nusantara Parahyangan Tbk	BBNP	Bank	525	550	550
3	16/03/2001	Plaspak Prima Industri Tbk	PLAS	Plastic & Packaging	200	275	510
4	22/03/2001	Indosiar Visual Mandiri Tbk	IDSR	Advertising, Printing, & Media	650	700	675
5	17/04/2001	<i>Indofarma Tbk</i>	<i>INAF</i>	<i>Pharmaceuticals</i>	250	250	230
6	23/04/2001	Kopitime Dot Com Tbk	KOPI	Computer & Services	250	300	300
7	17/05/2001	<i>Indoexchange Tbk</i>	<i>INDX</i>	<i>Computer & Services</i>	125	130	115
8	08/06/2001	Bhakti Capital Indonesia Tbk	BCAP	Securities Company	250	270	265
9	15/06/2001	<i>Daeyu Orchid Indonesia Tbk</i>	<i>DOID</i>	<i>Textile & Garment</i>	150	200	150
10	22/06/2001	Wahana Phonix Mandiri Tbk	WAPO	Whole Sale	175	250	505
11	04/07/2001	Kimia Farma Tbk	KAEF	Pharmaceuticals	200	220	210
12	06/07/2001	Danasupra Erapasific Tbk	DEFI	Financial Institution	200	525	550
13	13/07/2001	Bank Eksekutif International Tbk	BEKS	Bank	140	160	195
14	13/07/2001	Asia Kapitalindo Securities Tbk	AKSI	Securities Company	200	220	260
15	17/07/2001	Lapindo International Tbk	LAPD	Plastic & Packaging	200	415	450
16	17/07/2001	Arwana Citramulia Tbk	ARNA	Ceramic, Glass, & Porcelain	120	140	140
17	18/07/2001	Metamedia Technologies Tbk	META	Whole Sale	200	230	235
18	18/07/2001	Lamicitra Nusantara Tbk	LAMI	Property & Real Estate	125	225	240
19	18/07/2001	Betonjaya Manunggal Tbk	BTON	Metal & Allied Product	120	200	315
20	20/07/2001	Karka Yasa Profilia Tbk	KARK	Property & Real Estate	100	300	110
21	20/07/2001	Akbar Indo Makmur Stimec Tbk	AIMS	Whole Sale	250	600	730
22	18/09/2001	Panorama Sentrawisata Tbk	PANR	Restaurant, Hotel & Tourism	500	550	625
23	16/10/2001	Pyridam Farma Tbk	PYFA	Pharmaceuticals	105	125	200

24	17/10/2001	Ryane Adibusana Tbk	RYAN	Textile & Garment	100	230	580
25	22/10/2001	Roda Pango Harapan Tbk	RODA	Property & Real Estate	120	240	445
26	01/11/2001	Centrin Online Tbk	CENT	Computer & Services	125	300	180
27	15/11/2001	Infoasia Teknologi Global Tbk	IATG	Telecommunication	200	400	440
28	21/11/2001	Central Korporindo International Tbk	CNKO	Land / Stone Quarrying	105	330	220
29	26/11/2001	Integrasi Teknologi Tbk	ITTG	Computer & Services	150	160	105
30	30/11/2001	Colopak Indonesia Tbk	CLPI	Chemichals	200	400	410
31	28/12/2001	Limas Stokhomindo Tbk	LMAS	Computer & Services	350	450	510
32	17/01/2002	Fortune Indonesia Tbk	FORU	Advertising, Printing, & Media	130	220	420
33	18/01/2002	Fishindo Kusuma Sejahtera Tbk	FISH	Animal Feed	125	200	160
34	18/01/2002	Anta Express Tour & Travel Services Tbk	ANTA	Restaurant, Hotel & Tourism	125	120	210
35	20/03/2002	Cipta Panelutama Tbk	CITA	Other Miscellaneous Industry	200	340	340
36	21/03/2002	Fatrapolindo Nusa Industri Tbk	FPNI	Plastic & Packaging	450	600	495
37	03/04/2002	Abdi Bangsa Tbk	ABBA	Advertising, Printing, & Media	105	110	475
38	16/04/2002	Jasuindo Tiga Perkasa Tbk	JTPE	Advertising, Printing, & Media	225	345	665
39	17/04/2002	Anugerah Tambak Perkasindo Tbk	ATPK	Fishery	300	350	300
40	18/04/2002	United Capital Indonesia Tbk	UNIT	Securities Company	210	300	330
41	01/05/2002	Bank Swadesi Tbk	BSWD	Bank	250	270	325
42	19/06/2002	Sugi Samapersada tbk	SUGI	Automotive & Components	120	200	200
43	28/06/2002	Kresna Graha Sekurindo Tbk	KREN	Securities Company	215	220	145
44	10/07/2002	Apexindo Pratama Duta Tbk	APEX	Crude Petroleum & Natural	550	550	550
45	15/07/2002	Bank Bumiputera Indonesia Tbk	BABP	Bank	120	125	135
46	16/07/2002	Surya Citra Media Tbk	SCMA	Advertising, Printing, & Media	1100	1125	1150
47	12/08/2002	Gema Grahasarana Tbk	GEMA	Whole Sale	225	225	170
48	14/10/2002	Inti Indah Karya Plasindo Tbk	IIKP	Plastic & Packaging	450	680	670
49	05/11/2002	Artha Securities Tbk	ARTA	Securities Company	225	240	565
50	21/11/2002	Bank Kesawan Tbk	BKSW	Bank	250	350	425
51	28/11/2002	Trust Finance Indonesia Tbk	TRUS	Financial Institution	170	190	395
52	18/12/2002	Artha Pasific Securities Tbk	APIC	Securities Company	210	310	345

53	23/12/2002	Tambang Batubara Bukit Asam Tbk	PTBA	Coal Mining	575	600	600
54	30/04/2003	Arona Binasejati Tbk	ARTI	Other Miscellaneous Industry	650	750	675
55	09/07/2003	Pelayaran Tempuran Emas Tbk	TMAS	Transportation	550	575	550
56	14/07/2003	Bank Mandiri (Persero) Tbk	BMRI	Bank	675	775	850
57	10/11/2003	Bank Rakyat Indonesia Tbk	BBRI	Bank	875	1050	975
58	15/12/2003	Perusahaan Gas Negara Tbk	PGAS	Energy	1500	1750	1550
59	29/12/2003	Asuransi Jasa Tania Tbk	ASJT	Insurance	300	355	375

Ket :

Perusahaan yang bercetak tebal dan miring adalah perusahaan yang tidak mengalami *underpricing*.

LAMPIRAN 2
UNDERWRITER DAN AUDITOR PERUSAHAAN

No	Nama Emiten	Nama Underwriter	Nilai	Nama Auditor	Nilai
1	Tempo Inti Media Tbk	PT Trimegah Securities Tbk PT. Victoria Kapitalindo International	1	Prasetio, Utomo & Co.	1
2	Bank Nusantara Paralyangan Tbk	PT. Panin Sekuritas	0	Robert Yogi	0
3	Plaspack Prima Industri Tbk	PT. Pridana Futura Centra Investama	0	Prasetio, Utomo & Co.	1
4	Indosiar Visual Mandiri Tbk	PT. Trimegah Securities Tbk	1	Prasetio, Utomo & Co.	1
5	Kopitime Dot Com Tbk	PT. Danatama Makmur PT. Trimegah Securities Tbk	1	Prasetio, Utomo & Co.	1
6	Bhakti Capital Indonesia Tbk	PT. Sinarmas Sekuritas PT. Agung securities Indonesia	1	Prasetio, Utomo & Co.	1
7	Wahana Phonix Mandiri Tbk	PT. Pridana Futura Centra Investama	0	Prasetio, Utomo & Co.	1
8	Kimia Farma Tbk	PT. Danareksa Sekuritas	1	Hans Tuanakotta & Mustofa	1
9	Danasupra Erapasific Tbk	PT. Sinarmas Sekuritas	1	Johan, Malonda & Co	1
10	Bank Eksekutif International Tbk	PT. Rifan Financindo Sekuritas	0	Drs. J Tanzil & Co	0
11	Asia Kapitalindo Securities Tbk	PT. Mahanusa Kapital	0	Prasetio, Utomo & Co.	1
12	Lapindo International Tbk	PT. Danatama Makmur	0	Amir Abadi Yusuf & Aryanto	0
13	Arwana Citramulia Tbk	PT. Ciptadana Sekuritas PT. Makindo Securities	1	Prasetio, Utomo & Co.	1
14	Metamedia Technologies Tbk	PT. Harita Kencana PT. Trimegah Securities	1	Johan, Malonda & Co	1
15	Lamicitra Nusantara Tbk	PT. Trimegah Securities PT. Victoria Sekuritas	1	Hans Tuanakotta & Mustofa	1
16	Betonjaya Manunggal Tbk	PT. Agung Securities Indonesia	0	Hans Tuanakotta & Mustofa	1
17	Karka Yasa Profilia Tbk	PT. Jakarta Arta Visi Abadi Securities	0	HLB Hadori & Co	0
18	Akbar Indo Makmur Stimec Tbk	PT. Secorinvest Central Gani	0	Drs. Joseph Susilo	0

19	Panorama Sentrawisata Tbk	PT. Dinamika Usaha Jaya	0	Hans Tuanakotta & Mustofa	1
20	Pyridam Farma Tbk	PT. Trimegah Securities PT. Kresna Graha Sekurindo	1	Prasetio, Utomo & Co.	1
21	Ryane Adibusana Tbk	PT. Asia Kapitalindo Securities	0	Prasetio, Utomo & Co.	1
22	Roda Pangan Harapan Tbk	PT. Harita Kencana Sekuritas	0	Johan, Malonda & Co	1
23	Centrin Online Tbk	PT. Trimegah Securities Tbk	1	Rasin Ichwan & Co	0
24	Infoasia Teknologi Global Tbk	PT. Trimegah Securities Tbk PT. Makinta Securities	1	Hans Tuanakotta & Mustofa	1
25	Central Korporindo International	PT. Asjaya Indosurya Securities	0	Drs. A. Rodi Kartamulja	0
26	Colopak Indonesia Tbk	PT. Secorinvest Central Gani	0	Doli, Bambang, & Sudarmadji	0
27	Limas Stokhomindo Tbk	PT. Makinta Securities	0	Hans Tuanakotta & Mustofa	1
28	Fortune Indonesia Tbk	PT. Millennium Atlantic Securities	0	Prasetio, Utomo & Co.	1
29	Fishindo Kusuma Sejahtera Tbk	PT. Bhakti Capital Indonesia Tbk	1	Drs. Arsyad	0
30	Cipta Panelutana Tbk	PT. Harita Kencana Securities	0	Amir Abadi Yusuf & Aryanto	0
31	Fatrapolindo Nusa Industri Tbk	PT. Ciptadana Securitas	1	Prasetio, Utomo & Co.	1
32	Abdi Bangsa Tbk	PT. Rifan Financindo Sekuritas	0	Doli, Bambang, & Sudarmadji	0
33	Jasuindo Tiga Perkasa Tbk	PT. Victoria Kapitalindo International	0	Doli, Bambang, & Sudarmadji	0
34	United Capital Indonesia Tbk	PT. Ciptadana Sekuritas	1	Doli, Bambang, & Sudarmadji	0
35	Bank Swadesi Tbk	PT. Ciptadana Sekuritas	1	Hans Tuanakotta & Mustofa	1
36	Sugi Samapersada Tbk	PT. Millennium Atlantic Securities	0	Johan, Malonda & Co	1
37	Bank Bumiputera Indonesia Tbk	PT. Danareksa Sekuritas	1	Prasetio, Utomo & Co.	1
38	Surya Citra Media Tbk	PT. CLSA Indonesia	1	Prasetio, Utomo & Co.	1
39	Inti Indah Karya Plasindo Tbk	PT. Danawibawa Inti Cemerlang PT. Harumdana Sekuritas PT. Sinarmas Sekuritas	1	Doli, Bambang, & Sudarmadji	0
40	Artha Securities Tbk	PT. Asia Kapitalindo Securities Tbk PT. Kapita Sekurindo	0	Rasin Ichwan & Co	0
41	Bank Kesawan Tbk	PT. Victoria Sekuritas PT. Kapita Sekurindo	0	Amir Abadi Yusuf & Aryanto	0

42	Trust Finance Indonesia Tbk	PT. Asia Kapitalindo Securities Tbk PT. Artha Sekuritas Tbk	0	Drs. Djoko Sutarjo	0
43	Artha Pasific Securities Tbk	PT. Victoria Kapitalindo International	0	Doli, Bambang, & Sudarmadji	0
44	Tambang Batubara Bukit Asam	PT. Danareksa Sekuritas	1	Drs. Hadi Sutanto & Co	0
45	Arona Binasejati Tbk	PT. Harumdana Sekuritas PT. Suprasurya Danawan Sekuritas	0	Drs. A Rodi Kartamulja	0
46	Bank Mandiri (Persero) Tbk	PT. Danareksa Sekuritas PT. ABN Amro Asia Securities Ind.	1	Prasetyo, Utomo & Co.	1
47	Bank Rakyat Indonesia Tbk	PT. Bahana Sekurities	1	Prasetyo, Utomo & Co.	1
48	Perusahaan Gas Negara Tbk	PT. Danareksa Sekuritas	1	Hans Tuanakotta & Mustofa	1

LAMPIRAN 3
PERSENTASE KEPEMILIKAN SAHAM DAN UMUR PERUSAHAAN

No	Nama Emiten	Tanggal Berdiri	Tanggal Listing	Jml Umur (Bulan)	Jumlah Saham yang Dipertahankan	Jumlah Saham yang Ditawarkan	Hasil Analisis in(1-%retained) + % retained
1	Tempo Inti Media Tbk	01/08/1996	08/01/2001	53	82.76 %	17.24 %	-93.03 %
2	Bank Nusantara Parahyangan Tbk	18/01/1972	10/01/2001	348	66.66 %	33.34 %	-43.18 %
3	Plaspack Prima Industri Tbk	23/07/1992	16/03/2001	104	76.91 %	23.09 %	-69.68 %
4	Indosiar Visual Mandiri Tbk	19/07/1997	22/03/2001	44	74.80 %	25.20 %	-63.03 %
5	Kopitime Dot Com Tbk	24/02/1981	23/04/2001	242	77.00 %	23.00 %	-69.97 %
6	Bhakti Capital Indonesia Tbk	15/07/1999	08/06/2001	23	89.60 %	10.40 %	-136.74 %
7	Wahana Phonix Mandiri Tbk	07/08/1993	22/06/2001	94	61.54 %	38.46 %	-34.02 %
8	Kimia Farma Tbk	16/08/1971	04/07/2001	359	91.00 %	9.00 %	-149.80 %
9	Danasupra Erapasific Tbk	11/11/1994	06/07/2001	80	84.91 %	15.09 %	-104.20 %
10	Bank Eksekutif International Tbk	11/09/1992	13/07/2001	106	61.49 %	35.81 %	-33.94 %
11	Asia Kapitalindo Securities Tbk	12/02/1990	13/07/2001	137	77.08 %	22.92 %	-70.02 %
12	Lapindo International Tbk	07/06/1990	17/07/2001	133	81.61 %	18.39 %	-87.73 %
13	Arwana Citramulia Tbk	22/02/1993	17/07/2001	101	76.76 %	23.24 %	-69.17 %
14	Metamedia Technologies Tbk	01/09/1995	18/07/2001	70	84.09 %	15.91 %	-99.73 %
15	Lamicitra Nusantara Tbk	29/01/1988	18/07/2001	162	92.89 %	7.11 %	-171.48 %
16	Betonjaya Manunggal Tbk	27/02/1995	18/07/2001	77	95.08 %	4.92 %	-206.11 %
17	Karka Yasa Profilia Tbk	21/04/1994	20/07/2001	87	68.09 %	31.91 %	-46.14 %
18	Akbar Indo Makmur Simec Tbk	07/05/1997	20/07/2001	50	63.64 %	36.36 %	-37.53 %
19	Panorama Sentrawisata Tbk	22/07/1995	18/09/2001	74	87.42 %	12.58 %	-119.89 %
20	Pyridam Farma Tbk	27/11/1976	16/10/2001	299	76.93 %	23.07 %	-69.73 %
21	Ryane Adibusana Tbk	07/02/1990	17/10/2001	140	77.56 %	22.44 %	-71.87 %

22	Roda Pangan Harapan Tbk	15/10/1984	22/10/2001	204	84.60 %	15.40 %	-102.48 %
23	Centrin Online Tbk	11/02/1987	01/11/2001	177	81.80 %	18.20 %	-88.57 %
24	Infoasia Teknologi Global Tbk	22/02/1995	15/11/2001	81	74.84 %	25.16 %	-63.15 %
25	Central Korporindo International Tbk	13/09/1999	21/11/2001	26	62.00 %	38.00 %	34.76 %
26	Colorpak Indonesia Tbk	15/09/1998	30/11/2001	38	83.59 %	16.41 %	-97.14 %
27	Limas Stokhomindo Tbk	04/06/1996	28/12/2001	66	92.69 %	7.31 %	-168.90 %
28	Fortune Indonesia Tbk	05/05/1970	17/01/2002	380	54.93 %	45.07 %	-24.77 %
29	Fishindo Kusuma Sejahtera Tbk	27/06/1992	18/01/2002	115	83.34 %	16.66 %	-95.88 %
30	Cipta Panelutama Tbk	27/06/1992	20/03/2002	117	74.98 %	25.02 %	-63.57 %
31	Fatrapolindo Nusa Industri Tbk	09/12/1987	21/03/2002	171	81.69 %	18.31 %	-88.08 %
32	Abdi Bangsa Tbk	28/11/1992	03/04/2002	113	95.09 %	4.91 %	-206.30 %
33	Jasindo Tiga Perkasa Tbk	10/11/1990	16/04/2002	137	71.43 %	28.57 %	-53.85 %
34	United Capital Indonesia Tbk	30/05/1988	18/04/2002	167	52.00 %	48.00 %	-21.40 %
35	Bank Swadesi Tbk	28/09/1968	01/05/2002	404	91.10 %	8.90 %	-150.81 %
36	Sugi Samapersada tbk	26/03/2002	19/06/2002	3	75.00 %	25.00 %	-63.63 %
37	Bank Bumiputera Indonesia Tbk	31/07/1989	15/07/2002	156	75.00 %	25.00 %	-63.63 %
38	Surya Citra Media Tbk	29/01/1999	16/07/2002	42	80.00 %	20.00 %	-80.94 %
39	Inti Indah Karya Plasindo Tbk	16/03/1999	14/10/2002	43	62.50 %	37.50 %	-35.58 %
40	Artha Securities Tbk	29/06/1990	05/11/2002	149	76.00 %	24.00 %	-66.71 %
41	Bank Kesawan Tbk	28/04/1913	21/11/2002	1075	80.24 %	19.76 %	-81.91 %
42	Trust Finance Indonesia Tbk	12/02/1990	28/11/2002	153	75.00 %	25.00 %	-63.63 %
43	Artha Pasific Securities Tbk	22/02/1989	18/12/2002	166	72.00 %	28.00 %	-55.30 %
44	Tambang Batubara Bukit Asam Tbk	15/12/1980	23/12/2002	264	83.74 %	16.26 %	-97.91 %
45	Arona Binasejati Tbk	13/03/1993	30/04/2003	121	51.53 %	48.47 %	-20.90 %
46	Bank Mandiri (Persero) Tbk	02/10/1998	14/07/2003	57	70.00 %	30.00 %	-50.40 %
47	Bank Rakyat Indonesia Tbk	16/12/1895	10/11/2003	1295	59.50 %	40.50 %	-30.89 %
48	Perusahaan Gas Negara Tbk	30/05/1996	15/12/2003	102	66.55 %	33.45 %	-42.96 %

Case Summaries ^a

	UP	UND	AUD	OWN	UMUR
1	.65	1.00	1.00	-93.03	53.00
2	.05	.00	.00	-43.18	348.00
3	1.55	.00	1.00	-69.68	104.00
4	.04	1.00	1.00	-63.03	44.00
5	.20	1.00	1.00	-69.97	242.00
6	.06	1.00	1.00	-136.74	23.00
7	1.89	.00	1.00	-34.02	94.00
8	.05	1.00	1.00	-149.80	359.00
9	1.75	1.00	1.00	-104.20	80.00
10	.39	.00	.00	-33.94	106.00
11	.30	.00	1.00	-70.02	137.00
12	1.25	.00	.00	-87.73	133.00
13	.17	1.00	1.00	-69.17	101.00
14	.18	1.00	1.00	-99.73	70.00
15	.92	1.00	1.00	-171.48	162.00
16	1.63	.00	1.00	-206.11	77.00
17	.10	.00	.00	-46.14	87.00
18	1.92	.00	.00	-37.53	50.00
19	.25	.00	1.00	-119.89	74.00
20	.91	1.00	1.00	-69.73	299.00
21	4.80	.00	1.00	-71.87	140.00
22	2.71	.00	1.00	-102.48	204.00
23	.44	1.00	.00	-88.57	177.00
24	1.20	1.00	1.00	-63.15	81.00
25	1.10	.00	.00	34.76	26.00
26	1.05	.00	.00	-97.14	38.00
27	.46	.00	1.00	-168.90	66.00
28	2.23	.00	1.00	-24.77	380.00
29	.28	1.00	.00	-95.88	115.00
30	.70	.00	.00	-63.57	117.00
31	.10	1.00	1.00	-88.08	171.00
32	3.52	.00	.00	-206.30	113.00
33	1.96	.00	.00	-53.85	137.00
34	.57	1.00	.00	-21.40	167.00
35	.30	1.00	1.00	-150.81	404.00
36	.67	.00	1.00	-63.63	3.00
37	.13	1.00	1.00	-63.63	156.00
38	.05	1.00	1.00	-80.94	42.00
39	.49	1.00	.00	-35.58	43.00
40	1.51	.00	.00	-86.71	149.00
41	.70	.00	.00	-81.91	1075.00
42	1.32	.00	.00	-63.63	153.00
43	.64	.00	.00	-55.30	166.00
44	.04	1.00	.00	-97.91	264.00
45	.04	.00	.00	-20.90	121.00
46	.26	1.00	1.00	-50.40	57.00
47	.11	1.00	1.00	-30.89	1295.00
48	.03	1.00	1.00	-42.96	102.00
Total	N	48	48	48	48

^a. Limited to first 100 cases.

Regression

Descriptive Statistics

	Mean	Std. Deviation	N
UP	.8675	.98673	48
UND	.4792	.50485	48
AUD	.5833	.49822	48
OWN	-78.9900	47.83133	48
UMUR	179.2708	233.27946	48

Variables Entered/Removed^b

Model	Variables Entered	Variables Removed	Method
1	UMUR, AUD, OWN, ^a UND		Enter

a. All requested variables entered.

b. Dependent Variable: UP

Model Summary^b

Model	R	R Square	Adjusted R Square	Std. Error of the Estimate	Durbin-Watson
1	.520 ^a	.270	.202	.86145	1.768

a. Predictors: (Constant), UMUR, AUD, OWN, UND

b. Dependent Variable: UP

ANOVA^b

Model		Sum of Squares	df	Mean Square	F	Sig.
1	Regression	12.352	4	3.088	3.974	.008 ^a
	Residual	33.409	43	.777		
	Total	45.761	47			

a. Predictors: (Constant), UMUR, AUD, OWN, UND

b. Dependent Variable: UP

Coefficients

Model		Unstandardized Coefficients		Standardized Coefficients	t	Sig.	Correlations	Collinearity Statistics	
		B	Std. Error	Beta			Partial	Tolerance	VIF
1	(Constant)	1.02575	.294		3.491	.001			
	UND	-1.04723	.277	-.536	-3.780	.000	-.499	.845	1.184
	AUD	-.27250	.290	-.138	-.939	.353	-.142	.790	1.265
	OWN	.00282	.003	.137	1.004	.321	.151	.915	1.093
	UMUR	-.00021	.001	-.051	-.386	.702	-.059	.990	1.011

a. Dependent Variable: UP

Collinearity Diagnostics

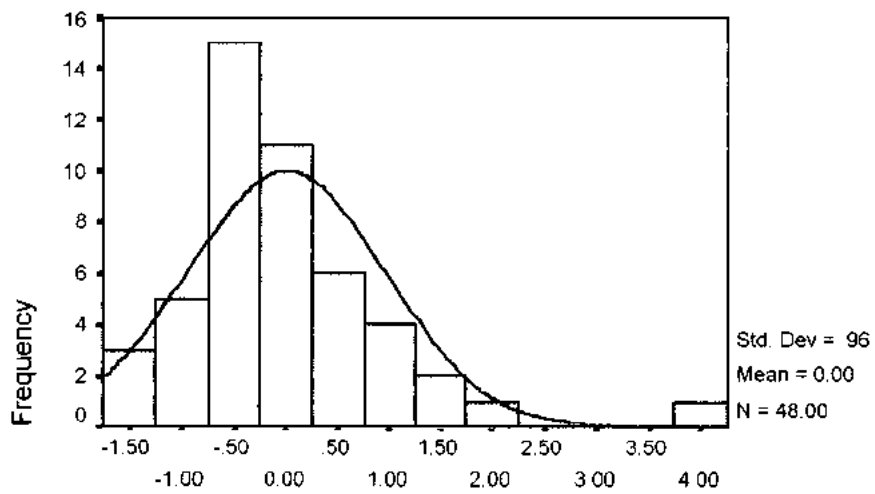
Model	Dimension	Eigenvalue	Condition Index	Variance Proportions				
				(Constant)	UND	AUD	OWN	UMUR
1	1	3.609	1.000	.01	.02	.02	.01	.02
	2	.619	2.415	.00	.05	.05	.01	.81
	3	.400	3.003	.04	.67	.00	.17	.02
	4	.245	3.835	.05	.23	.93	.09	.04
	5	.126	5.351	.89	.03	.00	.71	.10

a. Dependent Variable: UP

Uji Normalitas

Histogram

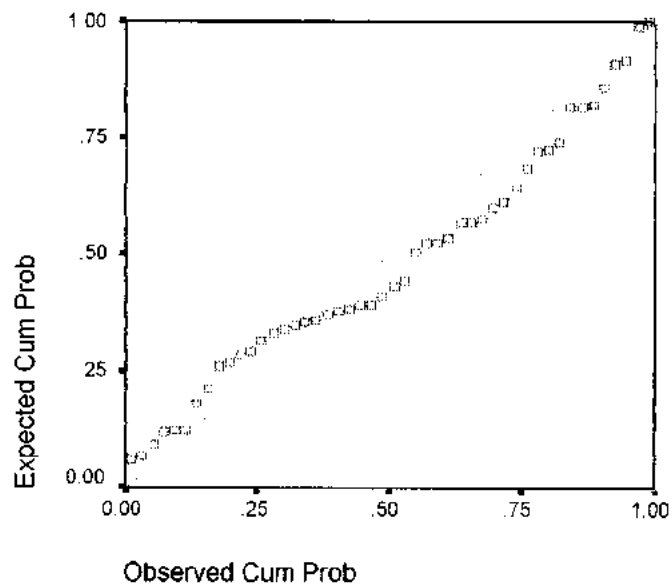
Dependent Variable: UP



Regression Standardized Residual

Normal P-P Plot of Regression Standardized Residual

Dependent Variable: UP



Uji Autokorelasi

Model Summary^b

Model	R	R Square	Adjusted R Square	Std. Error of the Estimate	Durbin-Watson
1	.520 ^a	.270	.202	.88145	1.788

a. Predictors: (Constant), UMUR, AUD, OWN, UND

b. Dependent Variable: UP

Uji Multikolinieritas

Coefficients^a

Model	Collinearity Statistics		
	Tolerance	VIF	
1	UND	.845	1.184
	AUD	.790	1.265
	OWN	.915	1.093
	UMUR	.990	1.011

a. Dependent Variable: UP

Uji Heteroskedastisitas

Scatterplot

Dependent Variable: UP

