

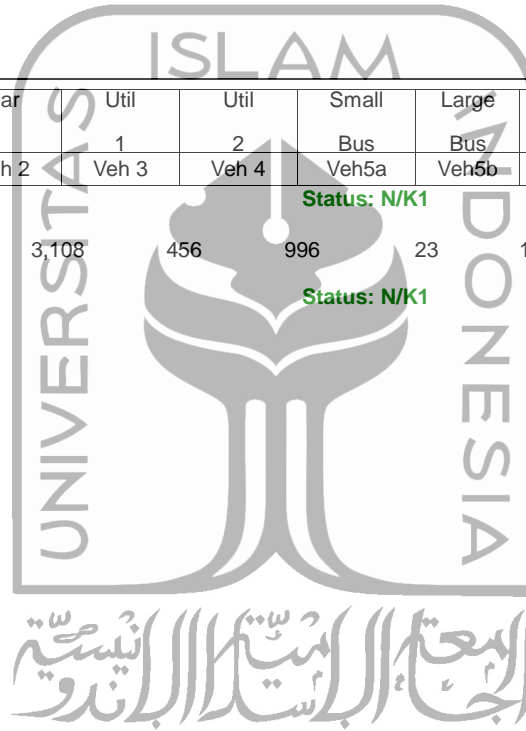


| | | | | | | | | | | | | | | | | | | |
|--|-----------------------------------|--|--|--|--|--|-----------------------------------|--|--|--|--|--|--|--|--|--|--|--|
|  | BINA MARGA | | | | | | TRAFFIC SUMMARY REPORT | | | | | | | | | | | |
| | INTERURBAN ROAD MANAGEMENT SYSTEM | | | | | | | | | | | | | | | | | |
| | CENTRAL DATABASE | | | | | | 2016 | | | | | | | | | | | |

| Link Traffic Post | AADT | | Car % | Bus % | LTr % | HTr % | Motor Cycle Veh 1 | Car Veh 2 | Util 1 Veh 3 | Util 2 Veh 4 | Small Bus Veh5a | Large Bus Veh5b | Truck 2x a) Veh6a | Truck 2x b) Veh6b | Truck 3x a) Veh7a | Truck 3x b) Veh7b | Truck 3x c) Veh7c | No Mot Traf Veh 8 | Survey Year |
|-----------------------------|-------|--------|----------|----------|----------|----------|-------------------------|--------------|--------------------|--------------------|-----------------------|-----------------------|-------------------------|-------------------------|-------------------------|-------------------------|-------------------------|-------------------------|----------------|
| | MBT | Total | | | | | | | | | | | | | | | | | |
| 025 - TEMPEL - PAKEM | | | | | | | | | | | | | | | | | | | |
| C025 | 5,206 | 19,260 | 87.59 | 0.67 | 11.03 | 0.71 | 13,920 | 3,108 | 456 | 996 | 23 | 12 | 94 | 480 | 37 | 0 | 0 | 134 | 2016 |

026 - PAKEM - PRAMBANAN

Status: N/K1



jumlah Curah Hujan dan Jumlah Hari Hujan di Stasiun Pengamatan BMKG, 2011-2015

| Tahun | | 2011 | | 2012 | | 2013 | | 2014 | | 2015 | |
|---------------------|---------------------------|--------------|--------------------------|--------------|--------------------------|--------------|--------------------------|--------------|--------------------------|--------------|--------------------------|
| Provinsi | Stasiun BMKG | Jumlah Curah | Jumlah Hari Hujan (hari) | Jumlah Curah | Jumlah Hari Hujan (hari) | Jumlah Curah | Jumlah Hari Hujan (hari) | Jumlah Curah | Jumlah Hari Hujan (hari) | Jumlah Curah | Jumlah Hari Hujan (hari) |
| Aceh | Sultan Iskandar Muda | 1 268.00 | 150.00 | 1 098.00 | 137.00 | 1 623.60 | 151.00 | 2 264.40 | 142.00 | 1 575.00 | 146.00 |
| Sumatera Utara | Kualanamu ¹ | 2 042.00 | 225.00 | 3 175.00 | 227.00 | 2 627.00 | 218.00 | 2 148.00 | 200.00 | 975.90 | 105.00 |
| Sumatera Barat | Sicincin | | | 4 339.00 | 230.00 | 4 627.40 | 232.00 | 2 838.40 | 163.00 | 3 548.00 | 185.00 |
| Riau | Sultan Svarif Kasim II | 2 405.00 | 211.00 | 2 636.00 | 217.00 | 2 628.70 | 214.00 | 2 343.70 | 188.00 | 2 048.30 | 140.00 |
| Jambi | Sultan Thaha ² | 2 295.00 | 209.00 | 1 874.00 | 191.00 | 2 093.60 | 229.00 | 1 781.00 | 199.00 | 1 694.90 | 135.00 |
| Sumatera Selatan | Kenten | 2 593.00 | 217.00 | 3 083.00 | 194.00 | 3 409.20 | 238.00 | 1 668.30 | 176.00 | 1 947.20 | 138.00 |
| Bengkulu | Pulau Baai | | | 2 545.00 | 143.00 | 3 980.90 | 250.00 | 3 323.00 | 174.00 | 2 668.90 | 166.00 |
| Lampung | Radin Inten II | 1 568.00 | 118.00 | 1 685.00 | 143.00 | 2 456.70 | 198.00 | 1 682.50 | 178.00 | 1 628.10 | 151.00 |
| Kepulauan Bangka | Depati Amir | 2 921.00 | 213.00 | 2 018.00 | 195.00 | 2 839.20 | 243.00 | 1 675.00 | 179.00 | 1 534.70 | 163.00 |
| Kepulauan Riau | Kiiang | 3 893.00 | 205.00 | 3 253.00 | 202.00 | 3 389.40 | 227.00 | 3 064.00 | 174.00 | 2 250.90 | 174.00 |
| DKI Jakarta | Kemayoran ³ | 1 274.00 | | 1 570.00 | 139.00 | 2 524.60 | 172.00 | 2 908.00 | 157.00 | 2 169.50 | 121.00 |
| Jawa Barat | Bandung | 1 789.00 | 215.00 | 2 510.00 | 219.00 | 2 682.00 | 240.00 | 2 388.00 | 226.00 | 2 199.30 | 177.00 |
| Jawa Tengah | Semarang | 1 879.00 | 174.00 | 2 248.00 | 164.00 | 2 628.00 | 187.00 | 2 628.00 | 187.00 | 1 620.70 | 140.00 |
| DI Yogyakarta | Yogyakarta | 2 285.00 | 170.00 | 2 014.00 | 163.00 | 2 309.00 | 149.00 | 2 025.90 | 160.00 | 2 045.50 | 119.00 |
| Jawa Timur | Juanda | 1 790.00 | | 1 389.00 | | 2 270.00 | 181.00 | 1 980.20 | 154.00 | 2 024.70 | 133.00 |
| Banten | Serang | 1 141.00 | 165.00 | 1 197.00 | 171.00 | 3 573.00 | 206.00 | 1 521.00 | 176.00 | 1 310.10 | 155.00 |
| Bali | Ngurah Rai | 1 890.00 | 174.00 | 1 849.00 | 132.00 | 2 155.10 | 157.00 | 1 640.60 | 160.00 | 1 133.80 | 124.00 |
| Nusa Tenggara Barat | Bandara Int. Lombok | | | 2 137.00 | 153.00 | 2 098.90 | 160.00 | 1 563.90 | 106.00 | 1 147.90 | 91.00 |
| Nusa Tenggara Timur | Lasiana | 1 699.00 | 140.00 | 1 211.00 | 88.00 | 2 149.00 | 126.00 | 1 415.60 | 103.00 | 1 406.00 | 82.00 |
| Kalimantan Barat | Supadio | 3 129.00 | 196.00 | 3 081.00 | 218.00 | 3 382.00 | | 2 755.10 | 217.00 | 2 757.70 | 215.00 |
| Kalimantan Tengah | Tiilik Riwut | 3 434.60 | 218.00 | 2 596.00 | 210.00 | 3 259.50 | 241.00 | 2 853.90 | 175.00 | 2 748.40 | 155.00 |
| Kalimantan Selatan | Banjarbaru | 2 751.00 | 195.00 | 2 486.00 | 225.00 | 3 006.00 | 243.00 | 2 371.00 | 221.00 | 2 509.60 | 166.00 |
| Kalimantan Timur | Temindung | 2 990.00 | 231.00 | 2 421.00 | 231.00 | 2 854.10 | 259.00 | 2 422.30 | 146.00 | 2 069.40 | 186.00 |
| Kalimantan Utara | Taniung Harapan | | | | | 3 154.00 | 248.00 | 2 654.60 | 217.00 | 2 311.50 | 202.00 |
| Sulawesi Utara | Kayuwatu | 3 031.00 | 276.00 | 3 013.00 | 230.00 | 3 719.80 | 265.00 | 2 835.00 | 229.00 | 1 807.00 | 127.00 |
| Sulawesi Tengah | Mutiara SIS Al-Jufrie | 667.00 | | 760.00 | | 905.70 | | 705.10 | 167.00 | 460.90 | 68.00 |
| Sulawesi Selatan | Maros ⁴ | 3 465.00 | 176.00 | 2 493.00 | 191.00 | 3 973.00 | 213.00 | 2 739.00 | 190.00 | 3 382.00 | 155.00 |
| Sulawesi Tenggara | Kendari | 1 511.00 | 121.00 | | | 2 618.80 | 206.00 | 2 263.60 | 172.00 | 1 589.60 | 141.00 |
| Gorontalo | Dialaluddin | 2 272.00 | 215.00 | 1 775.00 | 207.00 | 1 775.00 | 207.00 | 1 404.30 | 152.00 | 870.60 | 76.00 |
| Sulawesi Barat | Maiene | 1 660.00 | 175.00 | 1 087.00 | 165.00 | 1 682.20 | 198.00 | 1 096.80 | 153.00 | 1 167.90 | 93.00 |
| Maluku | Pattimura | 3 988.00 | 257.00 | 5 041.00 | 226.00 | | | 2 593.00 | 229.00 | 1 987.20 | 167.00 |
| Maluku Utara | Sultan Babullah | 2 962.00 | 239.00 | | | 2 713.00 | 215.00 | 1 811.00 | 183.00 | 913.40 | 127.00 |
| Papua Barat | Rendani | 2 681.00 | 246.00 | 3 290.00 | 256.00 | 3 419.10 | 251.00 | 2 824.60 | 231.00 | 2 844.60 | 218.00 |
| Papua | Angkasapura | 2 226.00 | 196.00 | 1 916.00 | 219.00 | 4 033.00 | 251.00 | 2 731.00 | 202.00 | 1 265.90 | 168.00 |

Sumber: Badan Meteorologi, Klimatologi, dan Geofisika

**TABEL PRAKIRAAN HUJAN BULAN JANUARI 2017
DAERAH ISTIMEWA YOGYAKARTA**

| Nama Stasiun | Rata-Rata | Normal | Maksimum | | Minimum | | Prakiraan Januari 2017 | |
|-----------------------|------------------|------------------|------------------|-------|------------------|-----------|------------------------|-------------|
| | Curah Hujan (mm) | Curah Hujan (mm) | Curah Hujan (mm) | Tahun | Curah Hujan (mm) | Tahun | Curah Hujan (mm) | Sifat Hujan |
| 1. BANTUL | | | | | | | | |
| Dlingo | 261 | 222 - 300 | 995 | 2008 | 29 | 1997 | 393 - 522 | AN |
| Gandok | 380 | 323 - 437 | 1248 | 2008 | 92 | 1992 | 571 - 760 | AN |
| Gedongan | 349 | 297 - 401 | 955 | 2012 | 132 | 2007 | 525 - 698 | AN |
| Ngetal | 296 | 252 - 340 | 851 | 2005 | 60 | 2007 | 445 - 592 | AN |
| Piyungan | 272 | 231 - 313 | 995 | 2008 | 126 | 2010 | 409 - 544 | AN |
| Ringinharjo | 165 | 140 - 190 | 907 | 2013 | 91 | 1997 | 249 - 330 | AN |
| 2. GUNUNGKIDUL | | | | | | | | |
| BPP. Nglipar | 378 | 321 - 435 | 1056 | 1991 | 90 | 1978 | 568 - 756 | AN |
| BPP. Paliyan | 342 | 291 - 393 | 1081 | 1987 | 99 | 2007 | 514 - 684 | AN |
| BPP. Panggang | 348 | 296 - 400 | 778 | 1988 | 224 | 1989 | 523 - 696 | AN |
| BPP. Playen | 420 | 357 - 483 | 1068 | 1987 | 27 | 1978 | 631 - 840 | AN |
| BPP. Ponjong | 373 | 317 - 429 | 697 | 1986 | 125 | 1982 | 561 - 746 | AN |
| 3. KULON PROGO | | | | | | | | |
| BPP. Panjatan | 227 | 193 - 261 | 825 | 1986 | 103 | 2004 | 342 - 454 | AN |
| Brosot | 351 | 298 - 404 | 695 | 2001 | 161 | 2007 | 528 - 702 | AN |
| Gejagan | 350 | 298 - 402 | 563 | 2013 | 104 | 2007 | 526 - 700 | AN |
| Gembongan | 301 | 256 - 346 | 487 | 1999 | 124 | 2007 | 453 - 602 | AN |
| Kalibawang | 345 | 293 - 397 | 582 | 1987 | 104 | 2008 (2x) | 519 - 690 | AN |
| Kokap | 370 | 315 - 425 | 689 | 2002 | 89 | 1982 | 556 - 740 | AN |
| Samigaluh | 380 | 323 - 437 | 747 | 1991 | 178 | 1986 | 571 - 760 | AN |
| Singkung | 267 | 227 - 307 | 727 | 1987 | 132 | 2003 | 402 - 534 | AN |
| 4. SLEMAN | | | | | | | | |
| Beran | 360 | 306 - 414 | 654 | 2011 | 70 | 2007 | 541 - 720 | AN |
| Bronggang | 399 | 339 - 459 | 639 | 1984 | 163 | 2007 | 600 - 798 | AN |
| Kolombo | 439 | 373 - 505 | 1631 | 1987 | 63 | 2007 | 660 - 878 | AN |
| Ledoknongko | 404 | 343 - 465 | 700 | 1983 | 137 | 2007 | 607 - 808 | AN |
| Ngentak | 281 | 239 - 323 | 606 | 1983 | 92 | 2007 | 423 - 562 | AN |
| Stage of Yogyakarta | 247 | 210 - 284 | 495 | 2013 | 216 | 2004 | 372 - 494 | AN |
| Tempel | 394 | 335 - 453 | 654 | 1987 | 82 | 2007 | 592 - 788 | AN |

Keterangan :

Rata – rata = Tahun 1981 – 2010

Normal = 85 % - 115 % x rata-ratanya

**TABEL PRAKIRAAN HUJAN BULAN FEBRUARI 2017
DAERAH ISTIMEWA YOGYAKARTA**

| Nama Stasiun | Rata-Rata | Normal | Maksimum | | Minimum | | Prakiraan Februari 2017 | |
|-----------------------|------------------|------------------|------------------|-------|------------------|-------|-------------------------|-------------|
| | Curah Hujan (mm) | Curah Hujan (mm) | Curah Hujan (mm) | Tahun | Curah Hujan (mm) | Tahun | Curah Hujan (mm) | Sifat Hujan |
| 1. BANTUL | | | | | | | | |
| Dlingo | 240 | 204 - 276 | 602 | 2013 | 30 | 2000 | 361 - 480 | AN |
| Gandok | 434 | 369 - 499 | 908 | 2002 | 93 | 1993 | 652 - 868 | AN |
| Gedongan | 347 | 295 - 399 | 1045 | 1996 | 140 | 2007 | 522 - 694 | AN |
| Ngetal | 296 | 252 - 340 | 621 | 2005 | 30 | 2002 | 445 - 592 | AN |
| Piyungan | 292 | 248 - 336 | 516 | 2008 | 167 | 2004 | 439 - 584 | AN |
| Ringinharjo | 170 | 145 - 195 | 609 | 2011 | 249 | 2010 | 256 - 340 | AN |
| 2. GUNUNGKIDUL | | | | | | | | |
| BPP. Nglipar | 443 | 377 - 509 | 2435 | 1991 | 25 | 1976 | 666 - 886 | AN |
| BPP. Paliyan | 282 | 240 - 324 | 512 | 2011 | 100 | 1998 | 424 - 564 | AN |
| BPP. Panggang | 304 | 258 - 350 | 805 | 1988 | 161 | 2005 | 457 - 608 | AN |
| BPP. Playen | 422 | 359 - 485 | 882 | 2000 | 91 | 1978 | 634 - 844 | AN |
| BPP. Ponjong | 357 | 303 - 411 | 578 | 2007 | 149 | 1980 | 537 - 714 | AN |
| 3. KULON PROGO | | | | | | | | |
| BPP. Panjatan | 236 | 201 - 271 | 688 | 1995 | 42 | 2010 | 355 - 472 | AN |
| Brosot | 298 | 253 - 343 | 559 | 1988 | 84 | 1990 | 448 - 596 | AN |
| Gejagan | 334 | 284 - 384 | 448 | 2002 | 231 | 2010 | 502 - 668 | AN |
| Gembongan | 346 | 294 - 398 | 613 | 2003 | 110 | 2015 | 520 - 692 | AN |
| Kalibawang | 356 | 303 - 409 | 546 | 2003 | 125 | 1986 | 535 - 712 | AN |
| Kokap | 318 | 270 - 366 | 821 | 1995 | 99 | 1983 | 478 - 636 | AN |
| Samigaluh | 404 | 343 - 465 | 647 | 1995 | 134 | 1991 | 607 - 808 | AN |
| Singkung | 294 | 250 - 338 | 799 | 1991 | 51 | 2009 | 442 - 588 | AN |
| 4. SLEMAN | | | | | | | | |
| Beran | 360 | 306 - 414 | 652 | 2002 | 193 | 2001 | 541 - 720 | AN |
| Bronggang | 413 | 351 - 475 | 678 | 2003 | 101 | 1996 | 621 - 826 | AN |
| Kolombo | 410 | 349 - 471 | 954 | 1987 | 210 | 2001 | 616 - 820 | AN |
| Ledoknongko | 446 | 379 - 513 | 1053 | 2012 | 175 | 1990 | 670 - 892 | AN |
| Ngentak | 308 | 262 - 354 | 624 | 1983 | 97 | 2006 | 463 - 616 | AN |
| Stageof Yogyakarta | 215 | 183 - 247 | 408 | 2011 | 170 | 2006 | 324 - 430 | AN |
| Tempel | 410 | 349 - 471 | 702 | 1998 | 227 | 1996 | 616 - 820 | AN |

Keterangan :

Rata - rata = Tahun 1981 - 2010

Normal = 85 % - 115 % x rata-ratanya

BAB 3**HASIL PENYELIDIKAN****3.1 DINAMIC CONE PENETROMETER (DCP)**

Pengujian DCP ini dilaksanakan karena adanya kebutuhan untuk pelebaran jalan dimana nilai DCP dan CBR ini merupakan parameter untuk mengukur kekuatan tanah dasar.

Data Dinamic Cone Penetrometer adaiah sebagai berikut :

Tabel 3-1. DCP Ruas Jalan Prambanan - Pakem

| NO. | KM YOG | CBR (%) | FAKTOR MUSIM KEMARAU | CBR TERKOREKSI (%) |
|-----|--------|---------|----------------------|--------------------|
| 1 | 25+800 | 9.30 | 0.70 | 6.51 |
| 2 | 26+000 | 9.71 | 0.70 | 6.80 |
| 3 | 26+200 | 11.02 | 0.70 | 7.71 |
| 4 | 26+400 | 13.12 | 0.70 | 9.18 |
| 5 | 26+600 | 13.74 | 0.70 | 9.62 |
| 6 | 26+800 | 9.30 | 0.70 | 6.51 |
| 7 | 27+000 | 9.87 | 0.70 | 6.91 |
| 8 | 27+200 | 9.30 | 0.70 | 6.51 |
| 9 | 27+400 | 13.48 | 0.70 | 9.43 |
| 10 | 27+600 | 13.06 | 0.70 | 9.14 |
| 11 | 27+800 | 9.73 | 0.70 | 6.81 |
| 12 | 28+000 | 9.56 | 0.70 | 6.69 |
| 13 | 28+200 | 9.95 | 0.70 | 6.97 |
| 14 | 28+400 | 13.48 | 0.70 | 9.43 |
| 15 | 28+600 | 12.27 | 0.70 | 8.59 |
| 16 | 28+800 | 15.62 | 0.70 | 10.93 |
| 17 | 29+000 | 13.48 | 0.70 | 9.43 |
| 18 | 29+200 | 15.62 | 0.70 | 10.93 |

Tabel 3-2. DCP Ruas Jalan Tempel - Pakem

| NO. | KM YOG | CBR (%) | FAKTOR MUSIM KEMARAU | CBR TERKOREKSI (%) |
|-----|--------|---------|----------------------|--------------------|
| 1 | 17+300 | 14.41 | 0.70 | 10.09 |
| 2 | 17+500 | 14.27 | 0.70 | 9.99 |
| 3 | 17+700 | 15.62 | 0.70 | 10.93 |
| 4 | 17+900 | 14.27 | 0.70 | 9.99 |
| 5 | 18+100 | 15.62 | 0.70 | 10.93 |
| 6 | 18+300 | 14.99 | 0.70 | 10.49 |
| 7 | 18+500 | 13.48 | 0.70 | 9.43 |
| 8 | 18+700 | 12.87 | 0.70 | 9.01 |
| 9 | 18+900 | 12.53 | 0.70 | 8.77 |
| 10 | 19+100 | 12.53 | 0.70 | 8.77 |
| 11 | 19+300 | 9.30 | 0.70 | 6.51 |
| 12 | 19+500 | 10.52 | 0.70 | 7.36 |
| 13 | 19+700 | 9.30 | 0.70 | 6.51 |
| 14 | 19+900 | 9.11 | 0.70 | 6.37 |
| 15 | 20+100 | 8.97 | 0.70 | 6.28 |
| 16 | 20+300 | 10.53 | 0.70 | 7.37 |
| 17 | 20+500 | 9.56 | 0.70 | 6.69 |
| 18 | 20+700 | 15.17 | 0.70 | 10.62 |
| 19 | 20+900 | 13.59 | 0.70 | 9.51 |
| 20 | 21+100 | 14.25 | 0.70 | 9.98 |
| 21 | 21+300 | 13.22 | 0.70 | 9.25 |

Dari hasil penyelidikan tanah dengan DCP di lapangan didapatkan nilai CBR rencana adalah sebagai berikut :

Tabel 3-3. Hasil Analisa CBR DCP

| NO | RUAS JALAN | PANJANG (KM) | JUMLAH DATA | NILAI CBR RATA2 TERKOREKSI | STANDART DEVIASI | CBR DESIGN (%) |
|----|-------------------|--------------|-------------|----------------------------|------------------|----------------|
| 1 | PRAMBANAN - PAKEM | 3,40 | 18,00 | 8,23 | 1,46 | 6,33 |
| 2 | TEMPEL - PAKEM | 3,20 | 17,00 | 8,56 | 1,27 | 6,91 |

3.2 TEST PIT DAN CBR LABORATORIUM (RENDAMAN)

Test pit dilakukan dengan membuat lubang pada daerah penyelidikan dengan lebar 1,00 meter, panjang 1,50 meter dengan kedalaman sesuai dengan



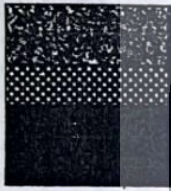
**KEMENTERIAN PEKERJAAN UMUM DAN PERUMAHAN RAKYAT
DIREKTORAT JENDERAL BINA MARGA
BALAI BESAR PELAKSANAAN JALAN NASIONAL VII
SATKER PELAKSANAAN JALAN NASIONAL WILAYAH PROVINSI D.I YOGYAKARTA**

Jalan Ring Road Utara Maguwoharjo, Depok, Sleman, Yogyakarta 55282 Telepon/Fax. (0274) 488669 Email : bangjatan-diy@yahoo.com

HASIL PEMERIKSAAN TEST PIT

Tanggal : 25 Januari 2017
Paket : Preservasi Rehabilitasi Jalan Yogyakarta - Tempel - Pakem - Prambanan - Yogyakarta
Kontraktor : PT. Deltamarga Adyatama
Konsultansi : PT. Adhy Duta Prima JO PT. Garis Putih Sejajar

1. Sta. 2 + 100 Kiri (Bogem)



| | |
|------------|-------|
| Hot Mix | 17 Cm |
| Aggregat A | 18 Cm |
| Aggregat B | 20 Cm |

2. Sta. 1 + 150 Kanan (Bogem)



| | |
|----------|-------|
| Hot Mix | 30 Cm |
| Onderlah | 35 Cm |

3. Sta. 2 + 000 Kanan (Tempel)

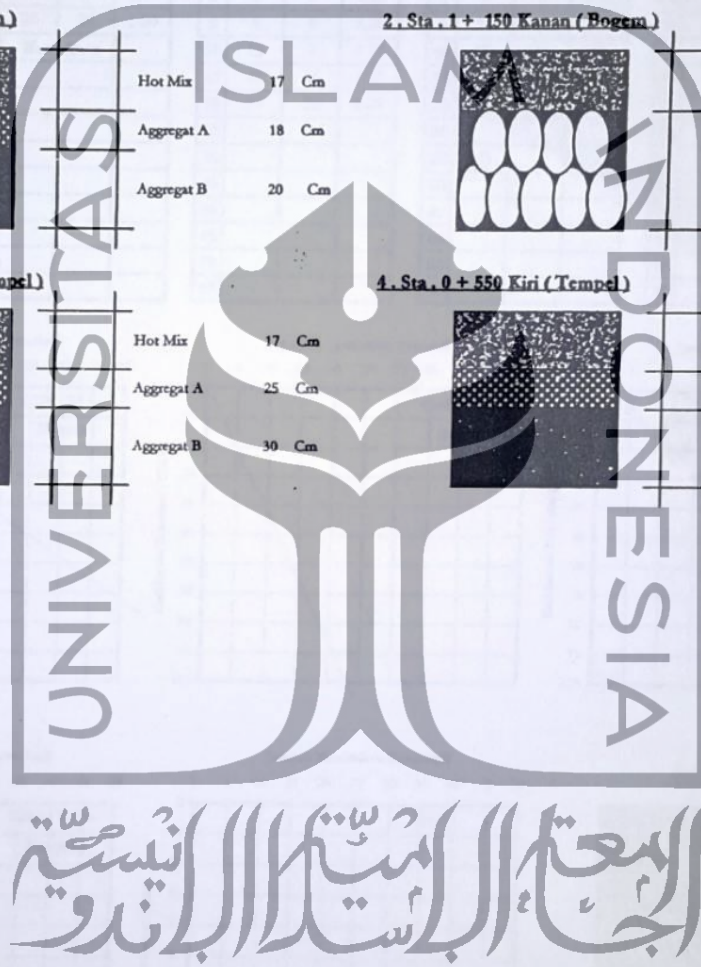


| | |
|------------|-------|
| Hot Mix | 17 Cm |
| Aggregat A | 25 Cm |
| Aggregat B | 30 Cm |

4. Sta. 0 + 550 Kiri (Tempel)



| | |
|------------|-------|
| Hot Mix | 15 Cm |
| Aggregat A | 30 Cm |
| Aggregat B | 30 Cm |



الجامعة الإسلامية
الاستد بالاندو

Disetujui oleh :
Direksi Pekerjaan

Sasno Eko Herwanto
Sasno Eko Herwanto

NIP. 19650427 200604 1 001

prepek 2015/gading/tem/hyngan/ldpa.daw/urupk

Diperiksa Oleh :
Konsultan Pengawas

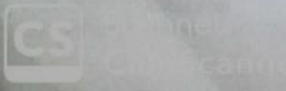
Sumaryanto
Sumaryanto

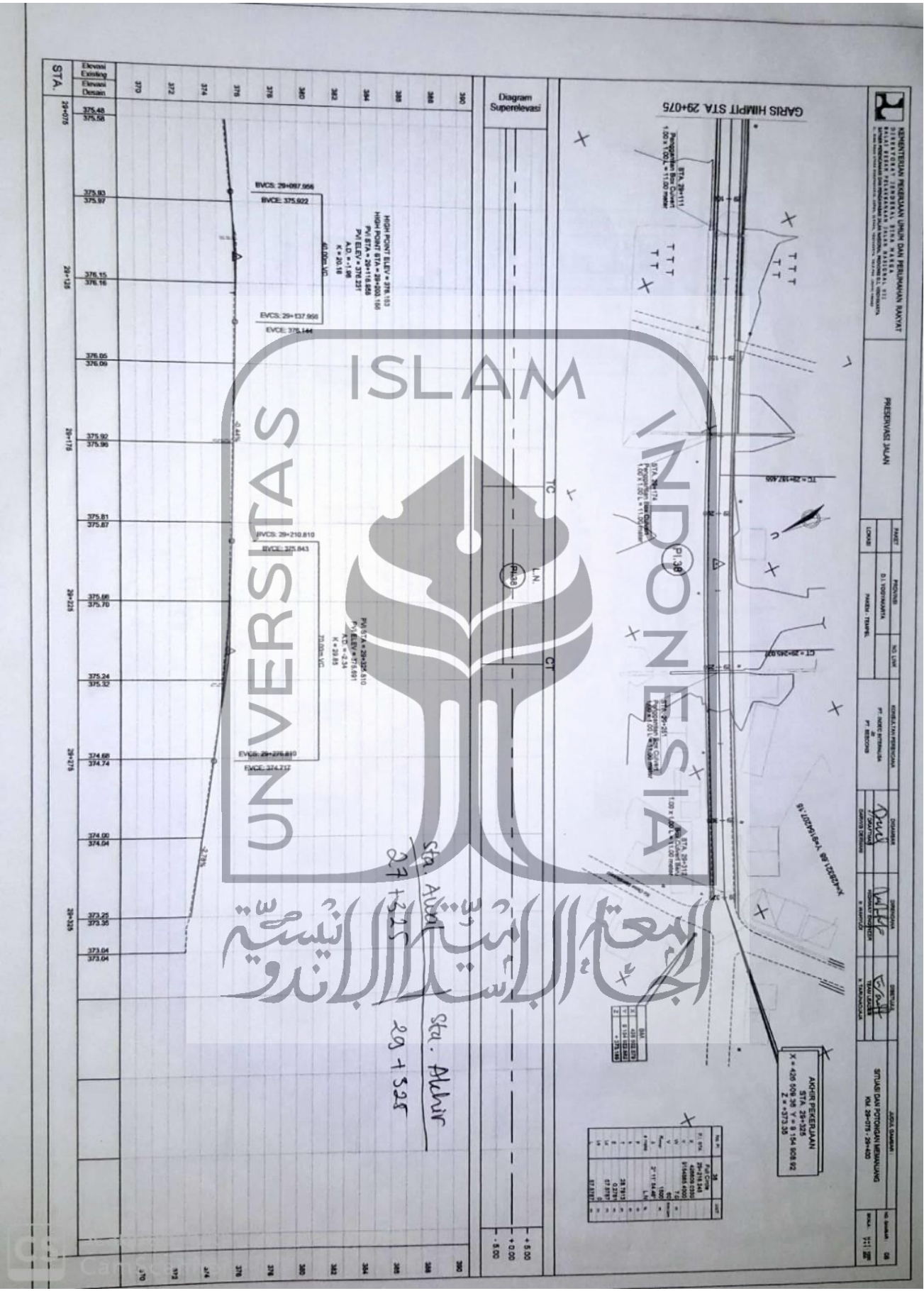
Lab. Tek

Dikerjakan Oleh :
Kontraktor Pelaksana

Purnomo Sapto H
Purnomo Sapto H

Lab. Tek





| | | | | | | | | | | | |
|---|--|---|--|--|--|---|--|---|--|---|--|
| KEMENTERIAN PERENCANAAN UNGGULAN DAN PESULUHAN RAKYAT | | PRESIDEN RI | | DEPT. PERTANAHAN, PERUMAHAN DAN KAWASAN KOTA | | DIREKTORAT JENDERAL PERENCANAAN | | DIREKTORAT PERENCANAAN DAN PENGENDALIAN | | DIREKTORAT PERENCANAAN DAN PENGENDALIAN | |
| DIREKTORAT PERENCANAAN DAN PENGENDALIAN | | DIREKTORAT PERENCANAAN DAN PENGENDALIAN | | DIREKTORAT PERENCANAAN DAN PENGENDALIAN | | DIREKTORAT PERENCANAAN DAN PENGENDALIAN | | DIREKTORAT PERENCANAAN DAN PENGENDALIAN | | DIREKTORAT PERENCANAAN DAN PENGENDALIAN | |
| DIREKTORAT PERENCANAAN DAN PENGENDALIAN | | DIREKTORAT PERENCANAAN DAN PENGENDALIAN | | DIREKTORAT PERENCANAAN DAN PENGENDALIAN | | DIREKTORAT PERENCANAAN DAN PENGENDALIAN | | DIREKTORAT PERENCANAAN DAN PENGENDALIAN | | DIREKTORAT PERENCANAAN DAN PENGENDALIAN | |
| DIREKTORAT PERENCANAAN DAN PENGENDALIAN | | DIREKTORAT PERENCANAAN DAN PENGENDALIAN | | DIREKTORAT PERENCANAAN DAN PENGENDALIAN | | DIREKTORAT PERENCANAAN DAN PENGENDALIAN | | DIREKTORAT PERENCANAAN DAN PENGENDALIAN | | DIREKTORAT PERENCANAAN DAN PENGENDALIAN | |

| No. Urut | Uraian | Volume | Unit | Nilai |
|----------|--------|--------|------|-------|
| 1 | ... | ... | ... | ... |
| 2 | ... | ... | ... | ... |
| 3 | ... | ... | ... | ... |
| 4 | ... | ... | ... | ... |
| 5 | ... | ... | ... | ... |
| 6 | ... | ... | ... | ... |
| 7 | ... | ... | ... | ... |
| 8 | ... | ... | ... | ... |
| 9 | ... | ... | ... | ... |
| 10 | ... | ... | ... | ... |
| 11 | ... | ... | ... | ... |
| 12 | ... | ... | ... | ... |
| 13 | ... | ... | ... | ... |
| 14 | ... | ... | ... | ... |
| 15 | ... | ... | ... | ... |
| 16 | ... | ... | ... | ... |
| 17 | ... | ... | ... | ... |
| 18 | ... | ... | ... | ... |
| 19 | ... | ... | ... | ... |
| 20 | ... | ... | ... | ... |
| 21 | ... | ... | ... | ... |
| 22 | ... | ... | ... | ... |
| 23 | ... | ... | ... | ... |
| 24 | ... | ... | ... | ... |
| 25 | ... | ... | ... | ... |
| 26 | ... | ... | ... | ... |
| 27 | ... | ... | ... | ... |
| 28 | ... | ... | ... | ... |
| 29 | ... | ... | ... | ... |
| 30 | ... | ... | ... | ... |
| 31 | ... | ... | ... | ... |
| 32 | ... | ... | ... | ... |
| 33 | ... | ... | ... | ... |
| 34 | ... | ... | ... | ... |
| 35 | ... | ... | ... | ... |
| 36 | ... | ... | ... | ... |
| 37 | ... | ... | ... | ... |
| 38 | ... | ... | ... | ... |
| 39 | ... | ... | ... | ... |
| 40 | ... | ... | ... | ... |
| 41 | ... | ... | ... | ... |
| 42 | ... | ... | ... | ... |
| 43 | ... | ... | ... | ... |
| 44 | ... | ... | ... | ... |
| 45 | ... | ... | ... | ... |
| 46 | ... | ... | ... | ... |
| 47 | ... | ... | ... | ... |
| 48 | ... | ... | ... | ... |
| 49 | ... | ... | ... | ... |
| 50 | ... | ... | ... | ... |

