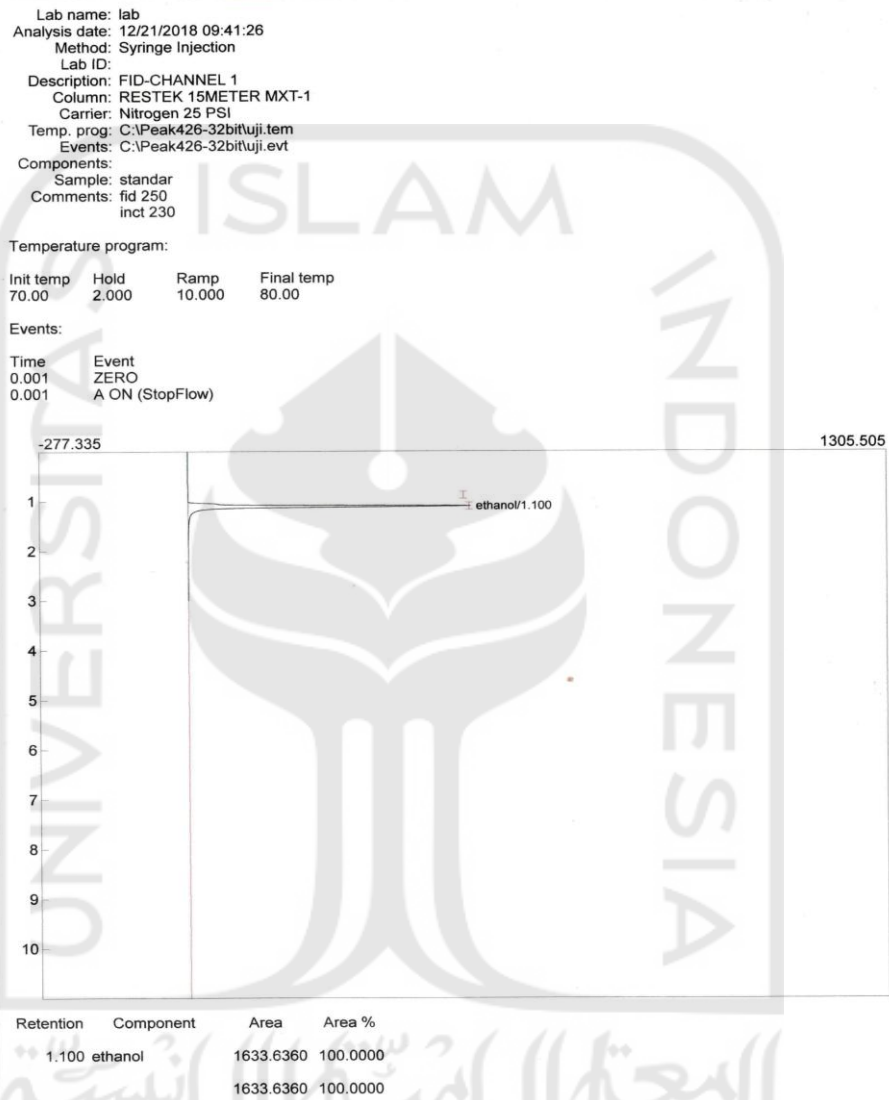
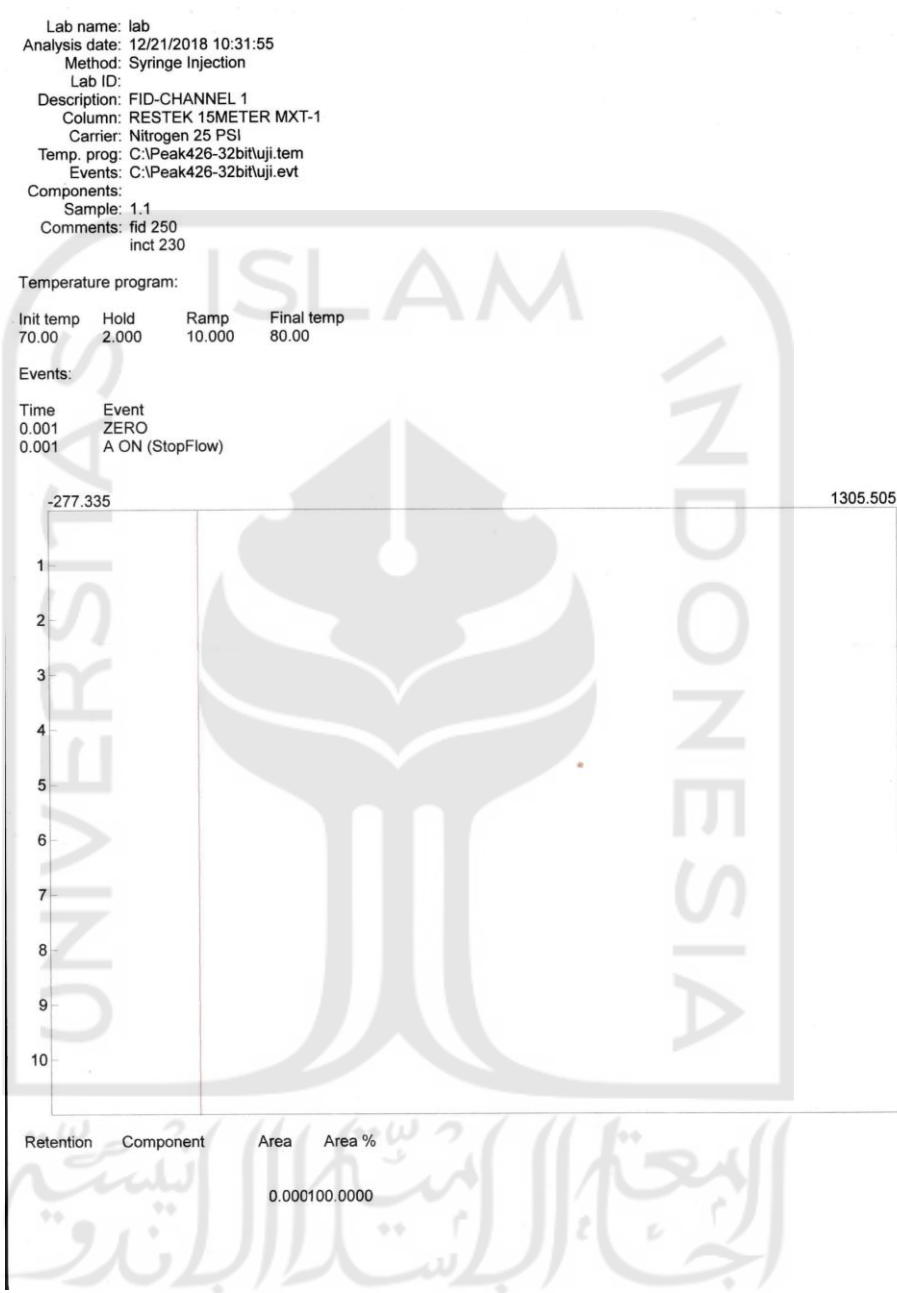


#### Lampiran 4. Kromatogram *gas chromatography*

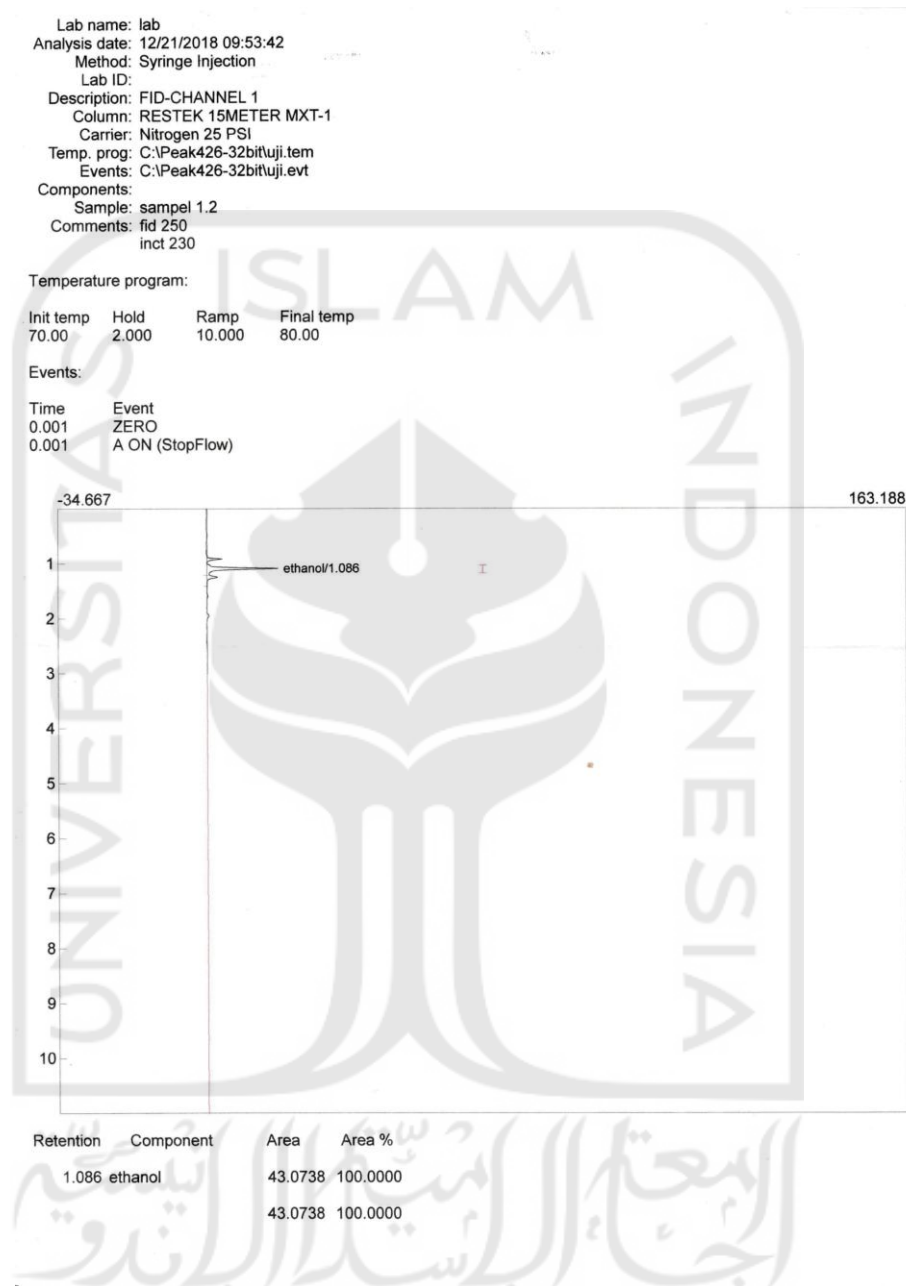
- Kromatogram larutan kontrol etanol



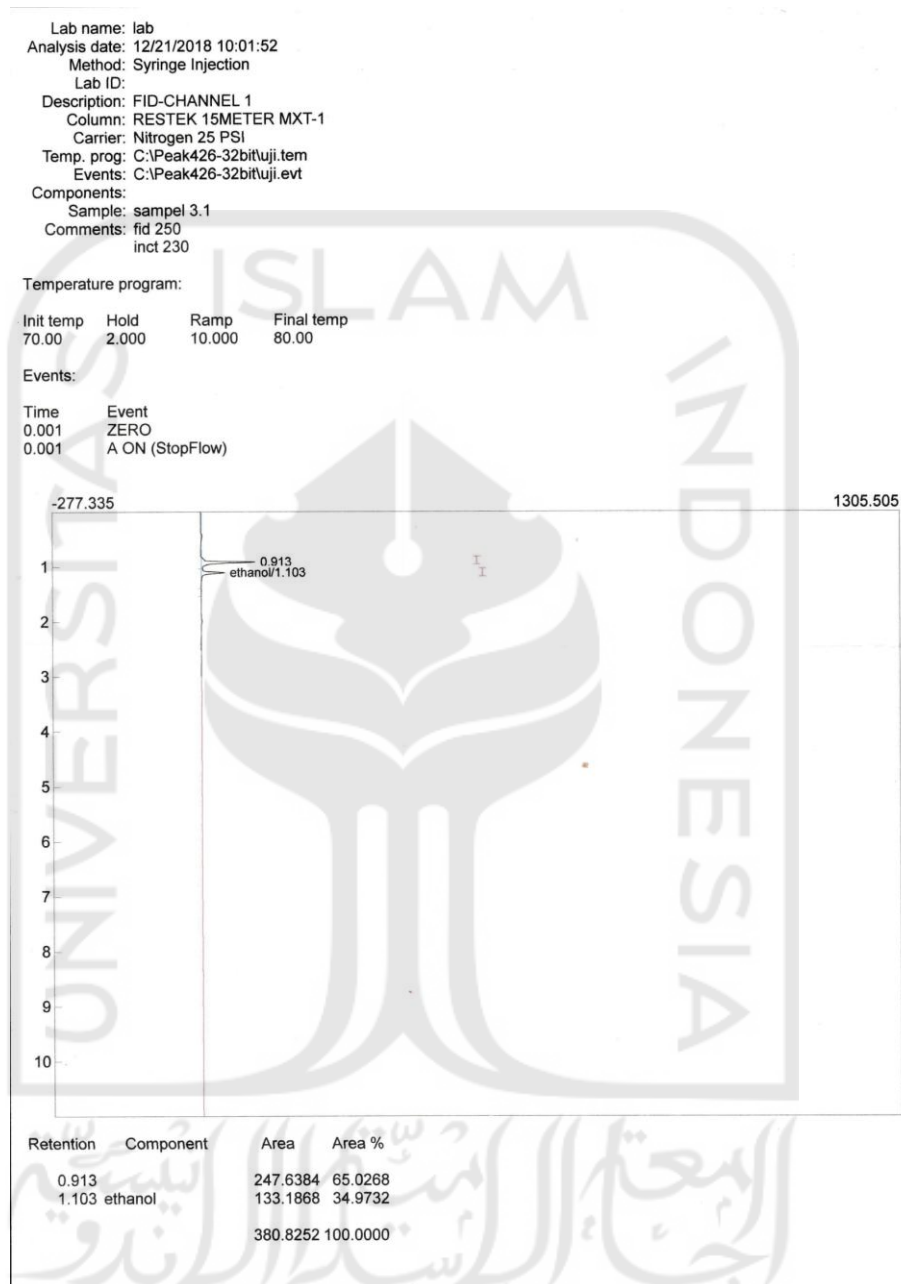
▪ **Kromatogram filtrat 1 hari fermentasi pengulangan pertama**



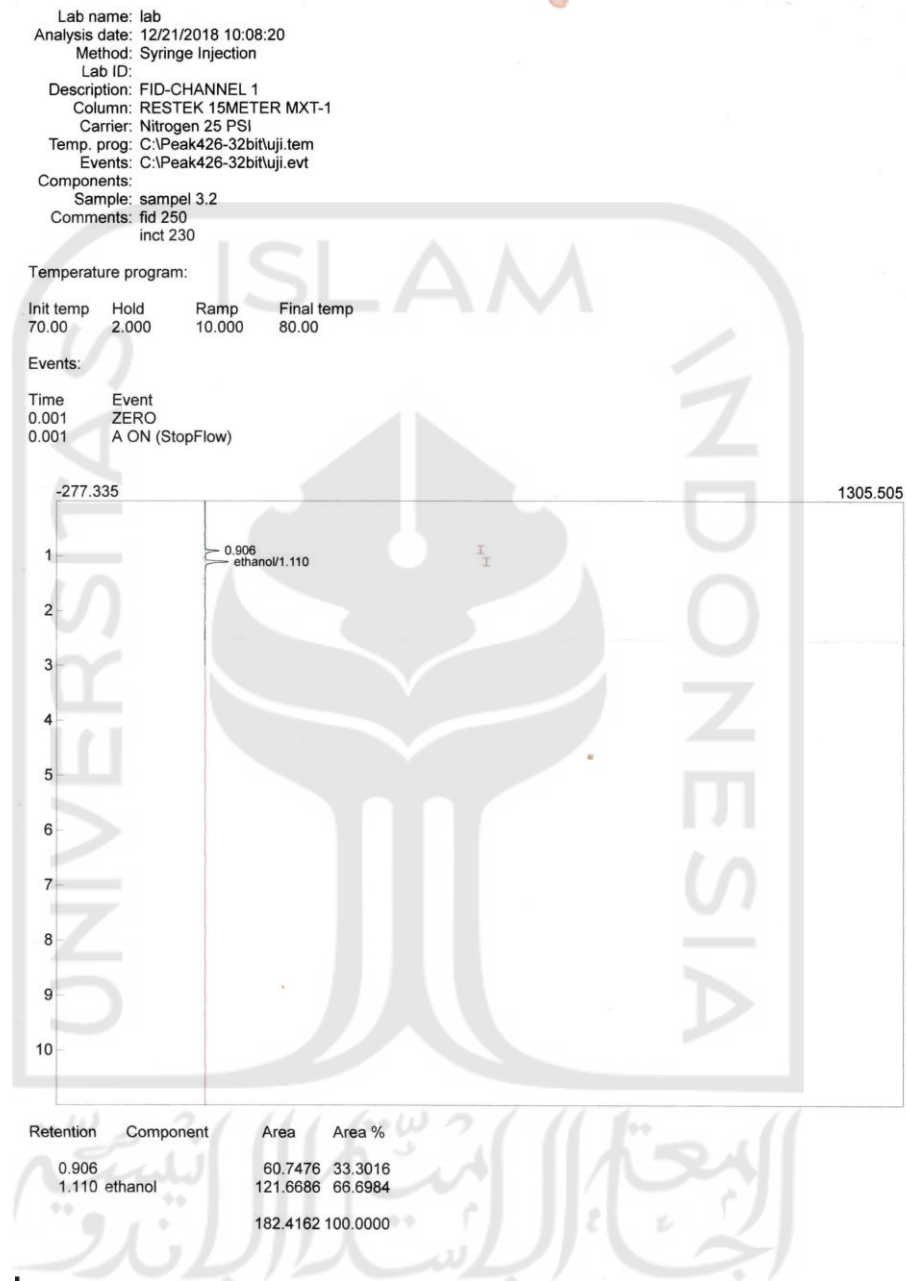
▪ **Kromatogram filtrat 1 hari fermentasi pengulangan kedua**



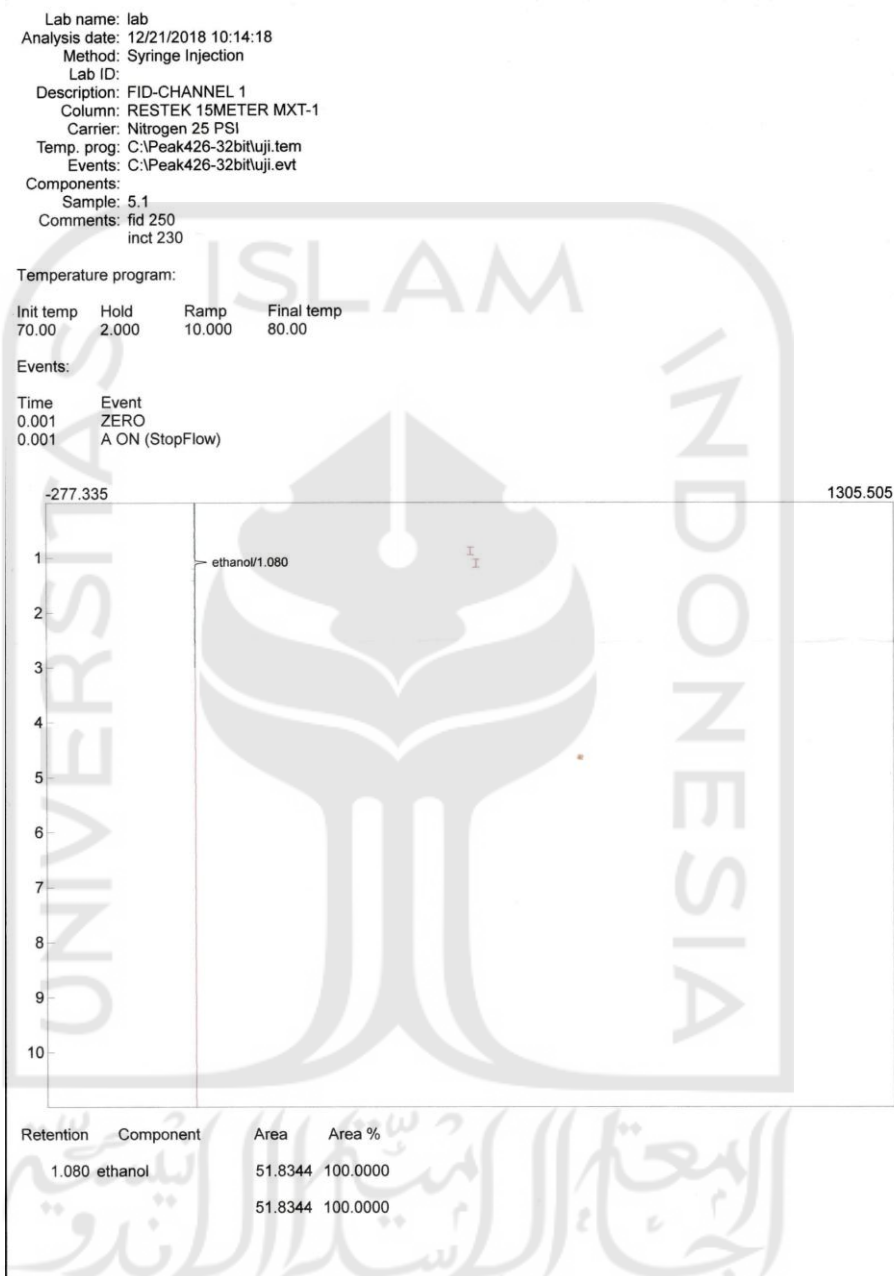
▪ **Kromatogram filtrat 3 hari fermentasi pengulangan pertama**



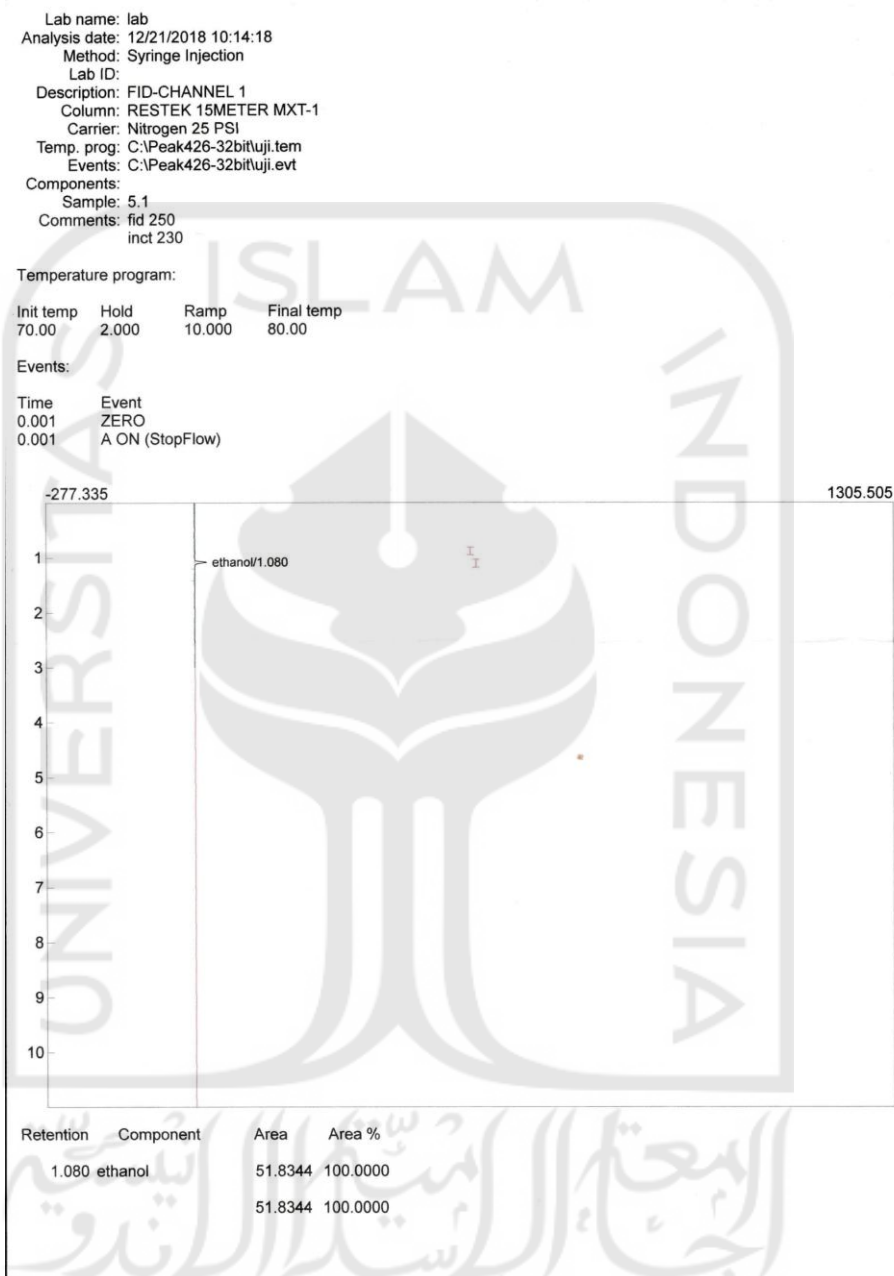
▪ **Kromatogram filtrat 3 hari fermentasi pengulangan kedua**



▪ **Kromatogram filtrat 5 hari fermentasi pengulangan pertama**

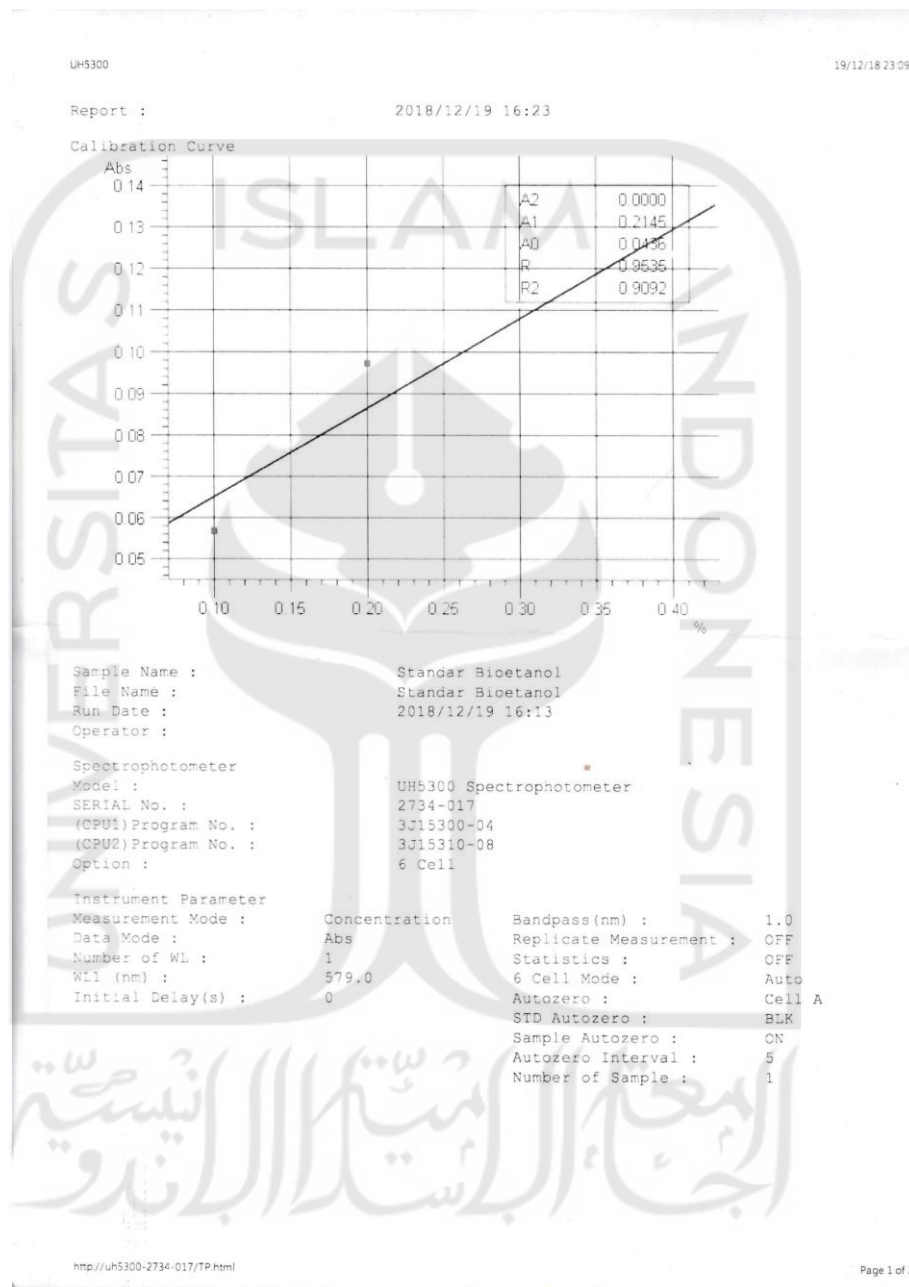


▪ **Kromatogram filtrat 5 hari fermentasi pengulangan kedua**



## Lampiran 5. Hasil analisis spektrofotometri UV-Vis

- Hasil kurva kalibrasi larutan standar





▪ Hasil absorbansi filtrat SSF

19/12/18 23:09

UH5300

STD

STD No.	Abs	CONC (%)	DIFF	RD	T
STD1	0.057	0.1000	-0.0386	-39.73348	-0.94691
STD2	0.097	0.2000	0.0498	51.16379	1.21931
STD3	0.111	0.3000	0.0164	16.87287	0.40211
STD4	0.124	0.4000	-0.0275	-28.30318	-0.67451

Curve Information  
 Calibration Curve Type : 1st Order  
 Calibration Curve Formula : Abs=f(CONC)  
 Through Zero : OFF  
 CONC Min : 0.0000  
 CONC Max : 100.0000  
 Calibration Curve Factor : A0 : 0.0436 A1 : 0.2145  
 Factor : Correlation Coefficient: R =0.9535  
 Determination Coefficient: R2 =0.9092

Sample

Sample ID	Abs	CONC (%)
1.1	0.101	0.2656
1.2	0.122	0.3634
3.1	0.108	0.3019
3.2	0.119	0.3535
5.1	0.153	0.5120
5.2	0.142	0.4578

UNIVERSITAS ISLAM INDONESIA

الجامعة الإسلامية الاندونيسية

<http://uh5300-2734-017/TP.html>

Page 2

▪ Hasil panjang gelombang maksimum

