

**L**

**A**

**M**



**R**

**A**

**N**



# PERCETAKAN *Cakrawala*

JL. SEMERU NO. 06 (BARAT SMUN 1) SUKOHARJO  
PO BOX. 166 TELP. (0271) 593234, HP. 081 22600660

## SURAT KETERANGAN

No. 15/ CAKRA/ XII/ 2001

Yang bertanda tangan dibawah ini, menerangkan bahwa mahasiswa ilmu Ekonomi Manajemen Universitas Islam Indonesia Yogyakarta

Nama : HERY KURNIANTO  
No. Mhs : 97311161  
Jurusan : EKONOMI – MANAJEMEN  
Alamat : Jl. KH. Samanhudi No. 25 Jetis Sukoharjo

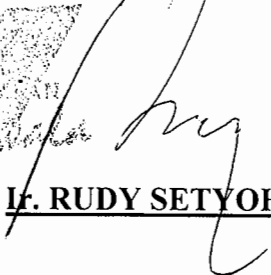
Telah melaksanakan research/ penelitian dengan baik di perusahaan percetakan "CAKRAWALA" Sukoharjo Jl. Semeru No.6 PO. BOX 66 Sukoharjo Jawa Tengah, guna menyusun skripsi dengan judul :

**"ANALISIS HUBUNGAN BIAYA PROMOSI TERHADAP OMSET PENJUALAN PADA PERCETAKAN CAKRAWALA SUKOHARJO"**

Demikian surat keterangan ini dibuat untuk digunakan sebagaimana mestinya.

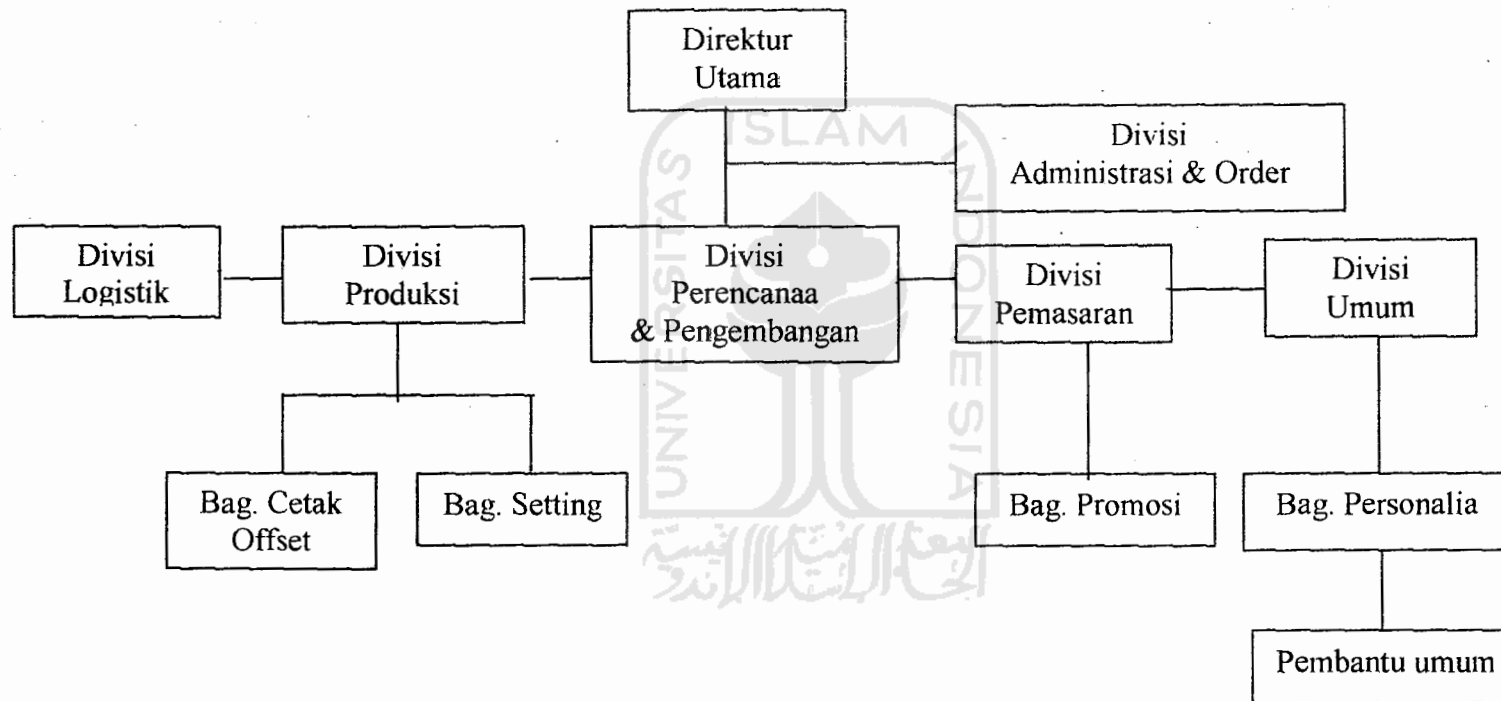
Sukoharjo, 27 Desember 2001

Direktur

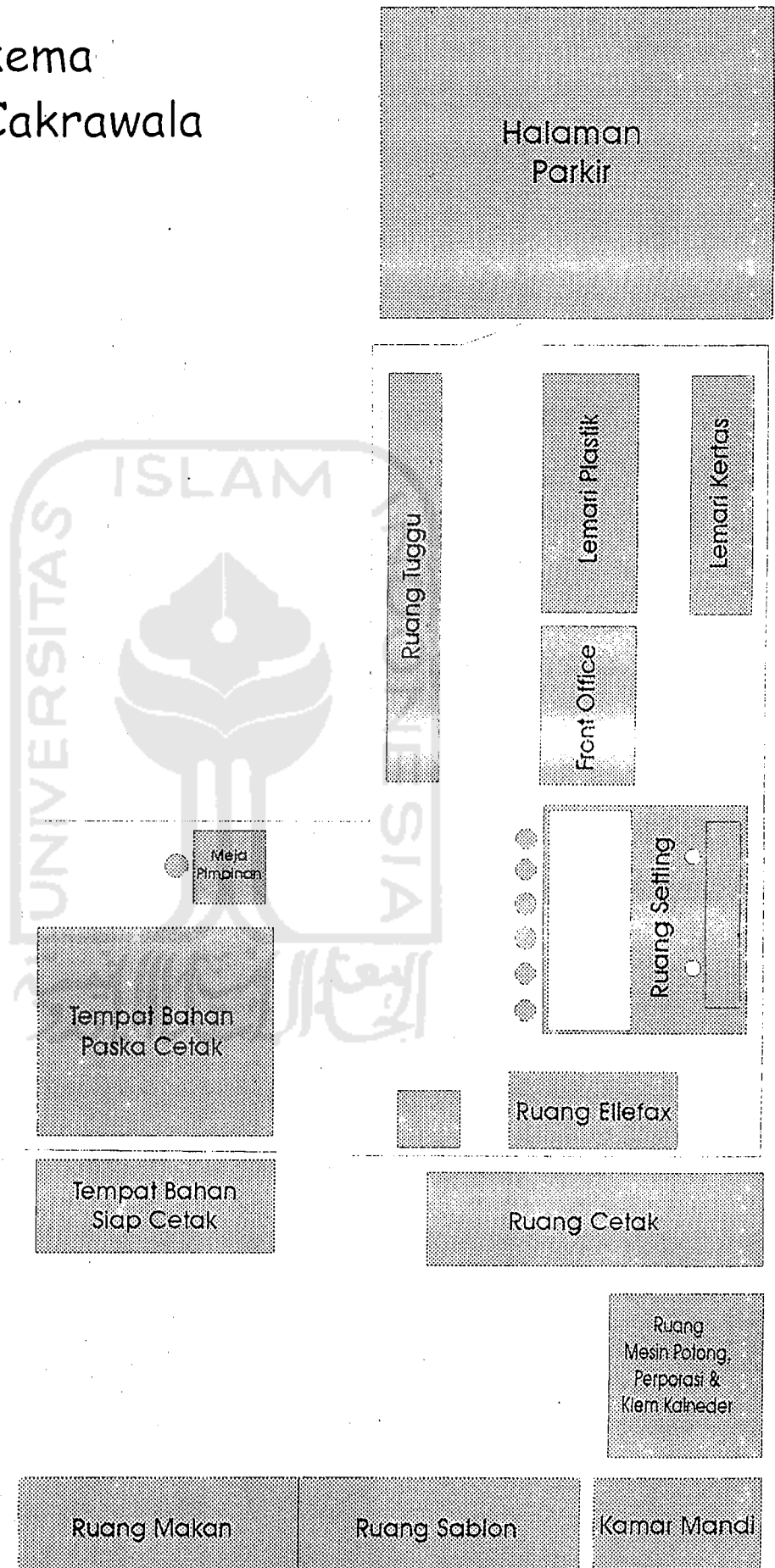
  
**Ir. RUDY SETYOHADI**

## STRUKTUR ORGANISASI

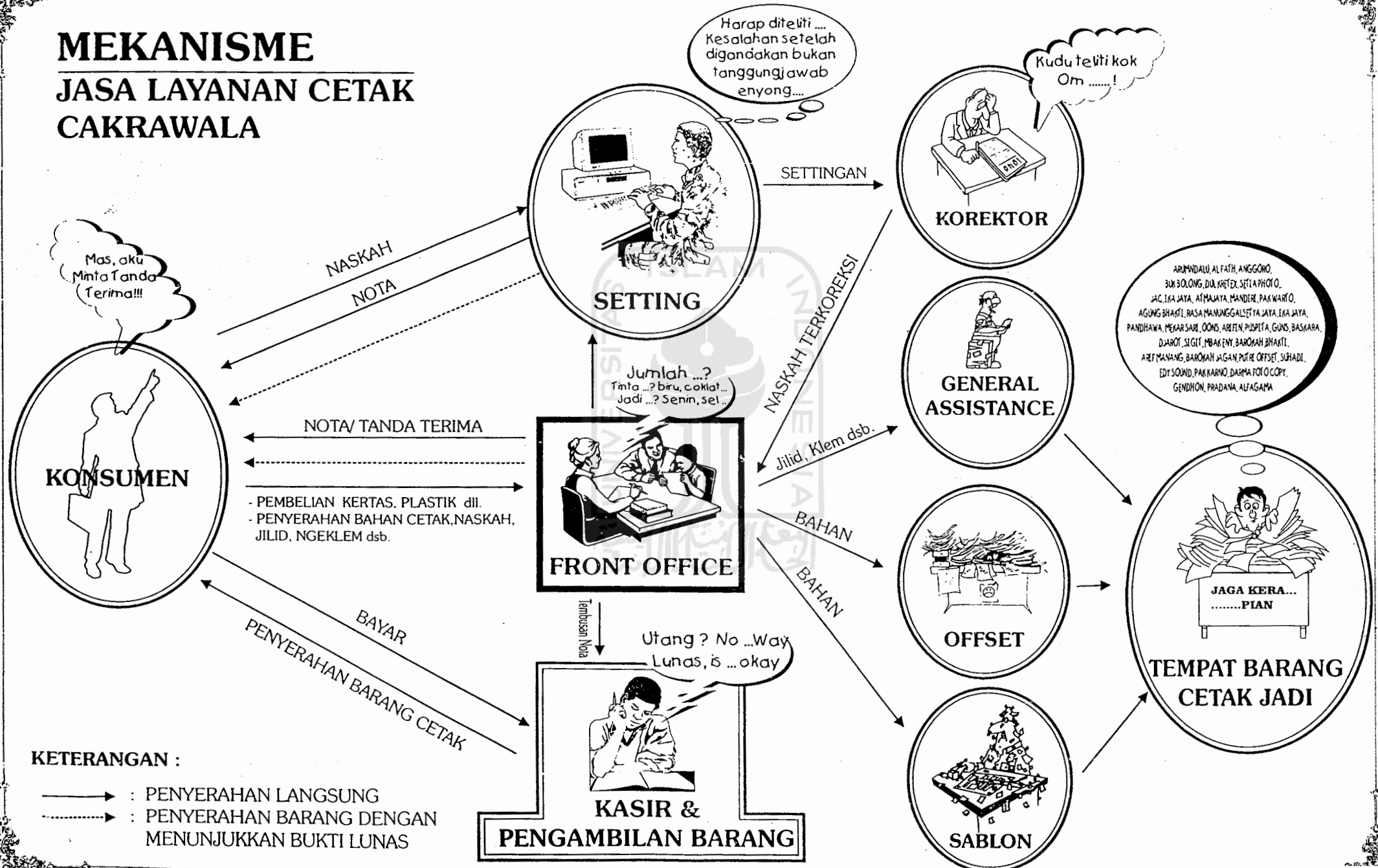
### PERUSAHAAN PERCETAKAN "CAKRAWALA" SUKOHARJO



# Skema Ruang Cakrawala



# MEKANISME JASA LAYANAN CETAK CAKRAWALA



# ression

## Descriptive Statistics

	Mean	Std. Deviation	N
1	37342861	542953.43	30
2	314114.67	58933.416	30
3	220464.00	17657.910	30
3	289853.67	14527.646	30

## Correlations

		Y	X1	X2	X3
Pearson Correlation	Y	1.000	.238	.959	.751
	X1	.238	1.000	.215	.053
	X2	.959	.215	1.000	.688
	X3	.751	.053	.688	1.000
Sig. (2-tailed)	Y		.103	.000	.000
	X1	.103		.127	.390
	X2	.000	.127		.000
	X3	.000	.390	.000	
N		30	30	30	30
Y		30	30	30	30
X1		30	30	30	30
X2		30	30	30	30
X3		30	30	30	30

## Variables Entered/Removed<sup>b</sup>

Model	Variables Entered	Variables Removed	Method
1	X3, X1, X2 <sup>a</sup>		Enter

a. All requested variables entered.

b. Dependent Variable: Y

## Model Summary<sup>b</sup>

Model	R	R Square	Adjusted R Square	Std. Error of the Estimate
1	.969 <sup>a</sup>	.939	.932	142048.94

**Model Summary<sup>b</sup>**

Model	Change Statistics					Durbin-Watson
	R Square Change	F Change	df1	df2	Sig. F Change	
	.939	132.563	3	26	.000	1.187

a. Predictors: (Constant), X3, X1, X2

b. Dependent Variable: Y

**ANOVA<sup>b</sup>**

Model		Sum of Squares	df	Mean Square	F	Sig.
1	Regression	8.02E+12	3	2.67E+12	132.563	.000 <sup>a</sup>
	Residual	5.25E+11	26	2.02E+10		
	Total	8.55E+12	29			

a. Predictors: (Constant), X3, X1, X2

b. Dependent Variable: Y

**Coefficients<sup>a</sup>**

Model		Unstandardized Coefficients		Standardized Coefficients	t	Sig.
		B	Std. Error	Beta		
1	(Constant)	29645026	544019.69		54.493	.000
	X1	.467	.462	.051	1.010	.322
	X2	25.327	2.122	.824	11.933	.000
	X3	6.788	2.523	.182	2.690	.012

**Coefficients<sup>a</sup>**

Model	Correlations		
	Zero-order	Partial	Part
(Constant)			
X1	.238	.194	.049
X2	.959	.920	.580
X3	.751	.467	.131

a. Dependent Variable: Y

**Coefficient Correlations<sup>a</sup>**

Model		X3	X1	X2	
1	Correlations	X3	1.000	.133	-.693
		X1	.133	1.000	-.246
		X2	-.693	-.246	1.000
1	Covariances	X3	6.365	.156	-3.712
		X1	.156	.214	-.242
		X2	-3.712	-.242	4.505

a. Dependent Variable: Y

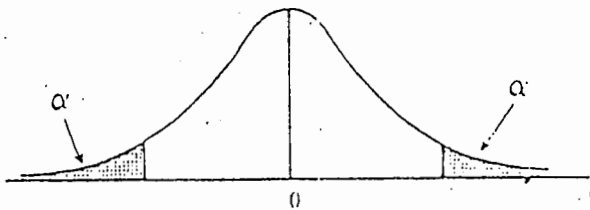
**Residuals Statistics<sup>a</sup>**

	Minimum	Maximum	Mean	Std. Deviation	N
Predicted Value	36693848	38163968	37342861	526030.32	30
Residual	-231841.7	401082.91	-4.97E-10	134501.05	30
Std. Predicted Value	-1.234	1.561	.000	1.000	30
Std. Residual	-1.632	2.824	.000	.947	30

a. Dependent Variable: Y



TABEL Titik persentasi



d.f. \ α	.25	.20	.15	.10	.05	.025	.01	.005	.0005
1	1.000	1.376	1.963	3.078	6.314	12.706	51.821	63.657	636.619
2	.816	1.061	1.386	1.886	2.920	4.303	6.965	9.925	31.598
3	.765	.978	1.250	1.638	2.353	3.182	4.541	5.841	12.941
4	.741	.941	1.190	1.533	2.132	2.776	3.747	4.604	8.610
5	.727	.920	1.156	1.476	2.015	2.571	3.365	4.032	6.859
6	.718	.906	1.134	1.440	1.943	2.447	3.143	3.707	5.959
7	.711	.896	1.119	1.415	1.895	2.365	2.998	3.499	5.405
8	.706	.889	1.108	1.397	1.860	2.306	2.896	3.355	5.041
9	.703	.883	1.100	1.383	1.833	2.262	2.821	3.250	4.781
10	.700	.879	1.095	1.372	1.812	2.228	2.764	3.169	4.587
11	.697	.876	1.088	1.363	1.796	2.201	2.718	3.106	4.457
12	.695	.875	1.083	1.356	1.782	2.179	2.681	3.055	4.318
13	.694	.870	1.079	1.350	1.771	2.160	2.650	3.012	4.221
14	.692	.868	1.076	1.345	1.761	2.145	2.624	2.977	4.140
15	.691	.866	1.074	1.341	1.753	2.131	2.602	2.947	4.073
16	.690	.865	1.071	1.337	1.746	2.120	2.583	2.921	4.015
17	.689	.865	1.069	1.333	1.740	2.110	2.567	2.898	3.965
18	.688	.862	1.067	1.330	1.734	2.101	2.552	2.878	3.922
19	.688	.861	1.066	1.328	1.729	2.093	2.539	2.861	3.883
20	.687	.860	1.064	1.325	1.725	2.086	2.528	2.845	3.850
21	.686	.859	1.063	1.323	1.721	2.080	2.518	2.831	3.819
22	.686	.858	1.061	1.321	1.717	2.074	2.508	2.819	3.792
23	.685	.858	1.060	1.319	1.714	2.069	2.500	2.807	3.767
24	.685	.857	1.059	1.318	1.711	2.064	2.492	2.797	3.745
25	.684	.856	1.058	1.316	1.708	2.060	2.485	2.787	3.722
26	.684	.856	1.058	1.315	1.706	2.056	2.479	2.779	3.707
27	.684	.855	1.057	1.314	1.703	2.052	2.473	2.771	3.690
28	.683	.855	1.056	1.313	1.701	2.048	2.467	2.763	3.674
29	.683	.854	1.055	1.311	1.699	2.045	2.462	2.756	3.659
30	.683	.854	1.055	1.310	1.697	2.042	2.457	2.750	3.646
40	.681	.851	1.050	1.303	1.684	2.021	2.423	2.704	3.551
60	.679	.843	1.046	1.296	1.671	2.000	2.390	2.660	3.460
120	.677	.845	1.041	1.289	1.658	1.980	2.358	2.617	3.373
∞	.674	.842	1.036	1.282	1.645	1.960	2.326	2.576	3.291

Sumber: Fisher and Yates: *Statistical Tables for Biological Agricultural and Medical Research*, Tabel III. Izin Penerbit: Oliver and Boyd, Ltd, Edinburg, England.