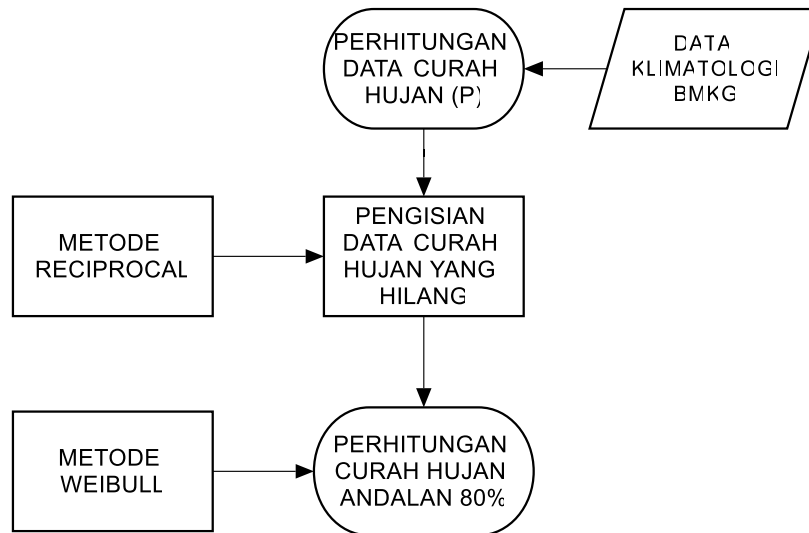
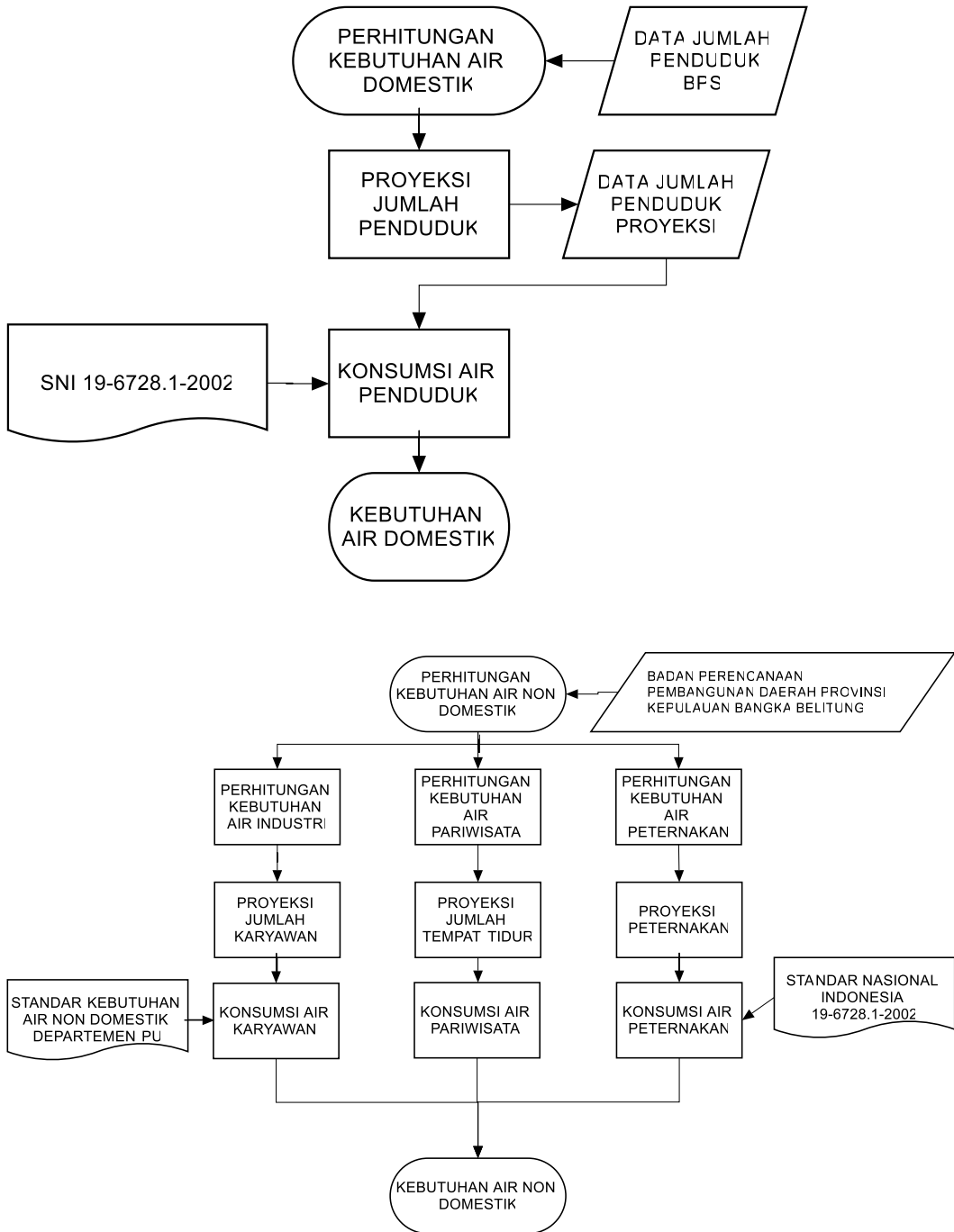


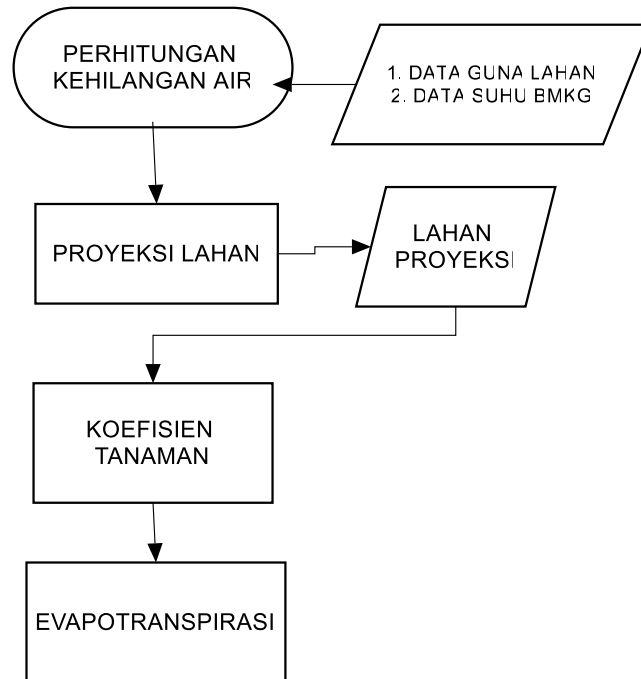
Lampiran 1 Diagram Alir Curah Hujan



Lampiran 2 Diagram Alir Kebutuhan Air Domestik dan Non Domestik



Lampiran 3 Diagram Alir Kehilangan Air



Lampiran 4 Tren Perubahan

Domestik

Data Penduduk	Metode		Satuan	Sumber
	Persamaan	Table Curve 2D		
Bangka	$y = a+blnx+c/x^2$		Jiwa Jiwa	(Hasanah et al. 2015).
	$r^2 =$	0,97482799		
	$a =$	-2,148642E+10		
	$b =$	2,651209,E+09		
	$c =$	5,34054E+15		
	$x1 =$	2020		
	$x2 =$	2030		
	$y1 =$	369.962		
$y2 =$	599.277			
Bangka Barat	$y = a+bx^2$		Jiwa Jiwa	(Hasanah et al. 2015).
	$r^2 =$	0,9537129		
	$a =$	-5101653,2		
	$b =$	1,3040185		
	$x1 =$	2020		
	$x2 =$	2030		
	$y1 =$	219.264		
	$y2 =$	272.077		
Bangka Tengah	$y = a+bx^2$		Jiwa Jiwa	(Hasanah et al. 2015).
	$r^2 =$	0,95789005		
	$a =$	-4802664,5		
	$b =$	1,2265078		
	$x1 =$	2020		
	$x2 =$	2030		
	$y1 =$	201.978		
	$y2 =$	251.651		
Bangka Selatan	$y = a+bx^2$		Jiwa Jiwa	(Hasanah et al. 2015).
	$r^2 =$	0,98170322		
	$a =$	-4408056,7		
	$b =$	1,1323986		
	$x1 =$	2020		
	$x2 =$	2030		
	$y1 =$	212.583		
	$y2 =$	258.445		
Pangkalpinang	$y = a+bx^2$		Jiwa Jiwa	(Hasanah et al. 2015).
	$r^2 =$	0,89811514		
	$a =$	5505666,0		
	$b =$	-2,1569667,E+13		
	$x1 =$	2020		
	$x2 =$	2030		
	$y1 =$	219.501		
	$y2 =$	271.453		

Non Domestik

Industri

Data Tenaga Kerja	Metode		Satuan	Sumber
	Persamaan	Table Curve 2D		
Bangka	$y = a+bx$			(Hasanah et al. 2015).
	$r^2 =$	0,98597229		
	$a =$	-601316,94		
	$b =$	300,51667		
	$x_1 =$	2020		
	$x_2 =$	2030		
	$y_1 =$	5.727	Jiwa	
$y_2 =$	8.732	Jiwa		
Bangka Barat	Tidak dipoyeksikan (data 10Tahun terakhir tetap)			(Hasanah et al. 2015).
	$x_1 =$	2020		
	$x_2 =$	2030		
	$y_1 =$	3.489	Jiwa	
	$y_2 =$	3.489	Jiwa	
Bangka Tengah	Persamaan	Table Curve 2D		(Hasanah et al. 2015).
	$y^2 = a+bx$			
	$r^2 =$	0,87491837		
	$a =$	-1,7546234,E+09		
	$b =$	883838,39		
	$x_1 =$	2020		
	$x_2 =$	2030		
$y_1 =$	5.543	Jiwa		
$y_2 =$	6.290	Jiwa		
Bangka Selatan	Persamaan	Table Curve 2D		(Hasanah et al. 2015).
	$y^2 = a+blnx$			
	$r^2 =$	0,85040411		
	$a =$	-1,2796696,E+09		
	$b =$	1,6975773,E+08		
	$x_1 =$	2020		
	$x_2 =$	2030		
$y_1 =$	3.512	Jiwa		
$y_2 =$	3.629	Jiwa		
Pangkalpinang	Persamaan	Table Curve 2D		(Hasanah et al. 2015).
	$y^{-1} = a+be^{x-}$			
	$r^2 =$	0,87491837		
	$a =$	0,000159795		
	$b =$	1,0733512,E+86		
	$x_1 =$	2020		
	$x_2 =$	2030		
$y_1 =$	6.258	Jiwa		
$y_2 =$	6.258	Jiwa		

Pariwisata

Data Tempat Tidur	Metode		Satuan	Sumber
	Persamaan	Table Curve 2D		
Bangka	$y = a+bx^2$			(Hasanah et al. 2015).
	$r^2 =$	0,9982856		
	$a =$	-28473,421		
	$b =$	0,00718708480		
	$x_1 =$	2020		
	$x_2 =$	2030		
	$y_1 =$	853	Tempat tidur	
	$y_2 =$	1.144	Tempat tidur	
Bangka Barat	Persamaan	Table Curve 2D		(Hasanah et al. 2015).
	$y = a+b/x^2$			
	$r^2 =$	0,82038151		
	$a =$	20200,003		
	$b =$	-8,0906831,E+10		
	$x_1 =$	2020		
	$x_2 =$	2030		
	$y_1 =$	372	Tempat tidur	
$y_2 =$	567	Tempat tidur		
Bangka Tengah	Persamaan	Table Curve 2D		(Hasanah et al. 2015).
	$\ln y = a+be^{-x}$			
	$r^2 =$	0,9334168		
	$a =$	6,5080123		
	$b =$	-3,1395433,E+87		
	$x_1 =$	2020		
	$x_2 =$	2030		
	$y_1 =$	670	Tempat tidur	
$y_2 =$	670	Tempat tidur		
Bangka Selatan	Persamaan	Table Curve 2D		(Hasanah et al. 2015).
	$y = a+b/x^2$			
	$r^2 =$	0,84916698		
	$a =$	17491,824		
	$b =$	-7,0364632,E+10		
	$x_1 =$	2020		
	$x_2 =$	2030		
	$y_1 =$	247	Tempat tidur	
$y_2 =$	417	Tempat tidur		
Pangkalpinang	Persamaan	Table Curve 2D		(Hasanah et al. 2015).
	$y^{0,5} = a+be^2$			
	$r^2 =$	0,8692634		
	$a =$	1532,4666		
	$b =$	-6,0664684,E+09		
	$x_1 =$	2020		
	$x_2 =$	2030		
	$y_1 =$	2.091	Tempat tidur	
$y_2 =$	3.641	Tempat tidur		

Peternakan

Data Kambing/Domba	Metode		Satuan	Sumber
	Persamaan	Table Curve 2D		
Bangka	$y^{0,5} = a + be^{-x}$			(Hasanah et al. 2015).
	$r^2 =$	0,79484106		
	$a =$	46,440531		
	$b =$	-3,7008941,E+87		
	$x_1 =$	2020		
	$x_2 =$	2030		
	$y_1 =$	2.157	Ekor	
	$y_2 =$	2.157	Ekor	
Bangka Barat	Persamaan	Table Curve 2D		(Hasanah et al. 2015).
	$y^{0,5} = a + bx^{3-}$			
	$r^2 =$	0,82740874		
	$a =$	-396,83059		
	$b =$	5,0658616,E-08		
	$x_1 =$	2020		
	$x_2 =$	2030		
	$y_1 =$	429	Ekor	
$y_2 =$	726	Ekor		
Bangka Tengah	Diambil data terbesar dari tren 8 tahun terakhir			(Hasanah et al. 2015).
	$x_1 =$	2020		
	$x_2 =$	2030		
	$y_1 =$	2.689	Ekor	
	$y_2 =$	2.689	Ekor	
Bangka Selatan	Diambil data terbesar dari tren 8 Tahun terakhir			(Hasanah et al. 2015).
	$x_1 =$	2020		
	$x_2 =$	2030		
	$y_1 =$	691	Ekor	
	$y_2 =$	691	Ekor	
Pangkalpinang	Persamaan	Table Curve 2D		(Hasanah et al. 2015).
	$y = a + bx^{1,5} + cx^{0,5}$			
	$r^2 =$	0,90311187		
	$a =$	1,2922985,E+08		
	$b =$	719,1901		
	$c =$	-4328033,4		
	$x_1 =$	2020		
	$x_2 =$	2030		
	$y_1 =$	1.608	Ekor	
$y_2 =$	3.328	Ekor		

Data Babi	Metode		Satuan	Sumber
	Persamaan	Table Curve 2D		
Bangka	$y^{0,5} = a+be^{-x}$			(Hasanah et al. 2015).
	$r^2 =$	0,80408128		
	$a =$	493,56035		
	$b =$	-1,6258969,E+87		
	$x1 =$	2020		
	$x2 =$	2030		
	$y1 =$	243.602	Ekor	
	$y2 =$	243.602	Ekor	
Bangka Barat	Persamaan	Table Curve 2D		(Hasanah et al. 2015).
	$y^2 = a+blnx$			
	$r^2 =$	0,83646017		
	$a =$	-7,5104098,E+09		
	$b =$	9,8768850,E+08		
	$x1 =$	2020		
	$x2 =$	2030		
	$y1 =$	2.597	Ekor	
$y2 =$	3.409	Ekor		
Bangka Tengah	Persamaan	Table Curve 2D		(Hasanah et al. 2015).
	$y^{-1} = a+be^{-x}$			
	$r^2 =$	0,8473948		
	$a =$	0,00016424367		
	$b =$	9,7062016,E+86		
	$x1 =$	2020		
	$x2 =$	2030		
	$y1 =$	6.089	Ekor	
$y2 =$	6.089	Ekor		
Bangka Selatan	Diambil data terbesar dari tren 8 Tahun terakhir			(Hasanah et al. 2015).
	$x1 =$	2020		
	$x2 =$	2030		
	$y1 =$	1.569	Ekor	
$y2 =$	1.569	Ekor		
Pangkalpinang	Persamaan	Table Curve 2D		(Hasanah et al. 2015).
	$y^{0,5} = a+blnx$			
	$r^2 =$	0,99804115		
	$a =$	-27074,2390		
	$b =$	3562,5888		
	$x1 =$	2020		
	$x2 =$	2030		
	$y1 =$	1.608	Ekor	
$y2 =$	3.328	Ekor		

Data Sapi/Kerbau	Metode		Satuan	Sumber
Bangka	Diambil data terbesar dari tren 8 tahun terakhir			(Hasanah et al. 2015).
	x1 =	2020		
	x2 =	2030		
	y1 =	2.008	Ekor	
	y2 =	2.008	Ekor	
Bangka Barat	Persamaan	Table Curve 2D		(Hasanah et al. 2015).
	$y^{0,5} = a + be^{-x}$			
	$r^2 =$	0,92878379		
	a =	28,758746		
	b =	-8,4342539,E+87		
	x1 =	2020		
	x2 =	2030		
	y1 =	827	Ekor	
y2 =	827	Ekor		
Bangka Tengah	Persamaan	Table Curve 2D		(Hasanah et al. 2015).
	$y^{0,5} = a + b^3$			
	$r^2 =$	0,92878379		
	a =	-1373,7546		
	b =	1,7274673,E-07		
	x1 =	2020		
	x2 =	2030		
	y1 =	2.509	Ekor	
y2 =	5.090	Ekor		
Bangka Selatan	Persamaan	Table Curve 2D		(Hasanah et al. 2015).
	$y^{-1} = a + be^{-x}$			
	$r^2 =$	0,95409793		
	a =	0,00092461214		
	b =	5,1854693,E+87		
	x1 =	2020		
	x2 =	2030		
	y1 =	1.082	Ekor	
y2 =	1.082	Ekor		
Pangkalpinang	Persamaan	Table Curve 2D		(Hasanah et al. 2015).
	$y^{0,5} = a + b^3$			
	$r^2 =$	0,99878225		
	a =	955,63728		
	b =	-1,1264520,E-07		
	x1 =	2020		
	x2 =	2030		
	y1 =	738	Ekor	
y2 =	177	Ekor		

Data Unggas	Metode	Satuan	Sumber
Bangka	Diambil data terbesar dari tren 8 tahun terakhir		(Hasanah et al. 2015).
	x1 = 2020		
	x2 = 2030		
	y1 = 6.118.694	Ekor	
	y2 = 6.118.694	Ekor	
Bangka Barat	Diambil data terbesar dari tren 8 tahun terakhir		(Hasanah et al. 2015).
	x1 = 2020		
	x2 = 2030		
	y1 = 1.058.880	Ekor	
	y2 = 1.058.880	Ekor	
Bangka Tengah	Diambil data terbesar dari tren 8 tahun terakhir		(Hasanah et al. 2015).
	x1 = 2020		
	x2 = 2030		
	y1 = 1.677.638	Ekor	
	y2 = 1.677.638	Ekor	
Bangka Selatan	Diambil data terbesar dari tren 8 tahun terakhir		(Hasanah et al. 2015).
	x1 = 2020		
	x2 = 2030		
	y1 = 2.281.801	Ekor	
	y2 = 2.281.801	Ekor	
Pangkalpinang	Diambil data terbesar dari tren 8 tahun terakhir		(Hasanah et al. 2015).
	x1 = 2020		
	x2 = 2030		
	y1 = 6.899.988	Ekor	
	y2 = 6.899.988	Ekor	

Land Use

Data Sawah Tadah Hujan	Metode		Satuan	Sumber
Bangka	Diambil data luas lahan tahun terakhir			(Hasanah et al. 2015).
	x1 =	2020		
	x2 =	2030		
	y1 =	14.840.000	m ²	
	y2 =	14.840.000	m ²	
Bangka Barat	Persamaan	Table Curve 2D		(Hasanah et al. 2015).
	$y^{-1} = a+be^{x-}$			
	r ² =	0,95208324		
	a =	0,000366373		
	b =	3,1117872,E+87		
	x1 =	2020		
	x2 =	2030		
	y1 =	27.294.566	m ²	
y2 =	27.294.566	m ²		
Bangka Tengah	Persamaan	Table Curve 2D		(Hasanah et al. 2015).
	$y^2 = a+be^{x-}$			
	r ² =	0,86659592		
	a =	1911,2981		
	b =	2,9189173,E+87		
	x1 =	2020		
	x2 =	2030		
	y1 =	437.184	m ²	
y2 =	437.184	m ²		
Bangka Selatan	Diambil data luas lahan tahun terakhir			(Hasanah et al. 2015).
	x1 =	2020		
	x2 =	2030		
	y1 =	102.300.000	m ²	
	y2 =	102.300.000	m ²	
Pangkalpinang	Tidak ada sawah irigasi			(Hasanah et al. 2015).
	x1 =	2020		
	x2 =	2030		
	y1 =	0	m ²	
	y2 =	0	m ²	

Data Sawah Irigasi	Metode		Satuan	Sumber
	Persamaan	Table Curve 2D		
Bangka	$y = a+be^{-x}$			(Hasanah et al. 2015).
	$r^2 =$	0,95545894		
	$a =$	28,580153		
	$b =$	-1,8645011,E+87		
	$x_1 =$	2020		
	$x_2 =$	2030		
	$y_1 =$	8.168.251	m ²	
	$y_2 =$	8.168.251	m ²	
Bangka Barat	Persamaan	Table Curve 2D		(Hasanah et al. 2015).
	$y^{-1} = a+be^{x-}$			
	$r^2 =$	0,98620659		
	$a =$	0,001009405		
	$b =$	1,8966258,E+87		
	$x_1 =$	2020		
	$x_2 =$	2030		
	$y_1 =$	9.906.826	m ²	
$y_2 =$	9.906.826	m ²		
Bangka Tengah	Persamaan	Table Curve 2D		(Hasanah et al. 2015).
	$y = a+b\ln x$			
	$r^2 =$	0,82612216		
	$a =$	-87856,681		
	$b =$	11552,814		
	$x_1 =$	2020		
	$x_2 =$	2030		
	$y_1 =$	700.857	m ²	
$y_2 =$	1.271.367	m ²		
Bangka Selatan	Persamaan	Table Curve 2D		(Hasanah et al. 2015).
	$y^{0,5} = a+bx$			
	$r^2 =$	0,93773374		
	$a =$	8219,0214		
	$b =$	-181,62897		
	$x_1 =$	2020		
	$x_2 =$	2030		
	$y_1 =$	31.152.567	m ²	
$y_2 =$	12.697.444	m ²		
Pangkalpinang	Tidak ada sawah irigasi			(Hasanah et al. 2015).
	$x_1 =$	2020		
	$x_2 =$	2030		
	$y_1 =$	0	m ²	
	$y_2 =$	0	m ²	

Data Kebun Campuran	Metode		Satuan	Sumber
	Persamaan	Table Curve 2D		
Bangka	$y = a+bx^3$			(Hasanah et al. 2015).
	$r^2 =$	0,8701019		
	$a =$	-1510969,9		
	$b =$	0,000191264		
	$x_1 =$	2020		
	$x_2 =$	2030		
	$y_1 =$	655.086.613	m ²	
	$y_2 =$	890.378.067	m ²	
Bangka Barat	Persamaan	Table Curve 2D		(Hasanah et al. 2015).
	$y = a+bx$			
	$r^2 =$	0,96303988		
	$a =$	-3875289,4		
	$b =$	1942,1879		
	$x_1 =$	2020		
	$x_2 =$	2030		
	$y_1 =$	479.301.580	m ²	
$y_2 =$	673.520.370	m ²		
Bangka Tengah	Persamaan	Table Curve 2D		(Hasanah et al. 2015).
	$y^2 = a+bx^{0,5}$			
	$r^2 =$	0,80202034		
	$a =$	-1,1351915,E+11		
	$b =$	2,5382771,E+09		
	$x_1 =$	2020		
	$x_2 =$	2030		
	$y_1 =$	237.111.145	m ²	
$y_2 =$	290.559.453	m ²		
Bangka Selatan	Persamaan	Table Curve 2D		(Hasanah et al. 2015).
	$y^{0,5} = a+bx^3$			
	$r^2 =$	0,95728579		
	$a =$	-5478,0184		
	$b =$	6,9365036,E-07		
	$x_1 =$	2020		
	$x_2 =$	2030		
	$y_1 =$	572.792.684	m ²	
$y_2 =$	1.054.060.961	m ²		
Pangkalpinang	Persamaan	Table Curve 2D		(Hasanah et al. 2015).
	$y = a+be^{-x}$			
	$r^2 =$	0,91720794		
	$a =$	545,29714		
	$b =$	-5,6898773,E+87		
	$x_1 =$	2020		
	$x_2 =$	2030		
	$y_1 =$	5.452.971	m ²	
$y_2 =$	5.452.971	m ²		

Data Ladang/Tegalan	Metode		Satuan	Sumber
	Persamaan	Table Curve 2D		
Bangka	$y^{0,5} = a+bx^3$			(Hasanah et al. 2015).
	$r^2 =$	0,90970644		
	$a =$	1836,4		
	$b =$	-1,9869579,E-07		
	$x_1 =$	2020		
	$x_2 =$	2030		
	$y_1 =$	394.716.487	m ²	
	$y_2 =$	303.565.715	m ²	
Bangka Barat	Persamaan	Table Curve 2D		(Hasanah et al. 2015).
	$y = a+bx$			
	$r^2 =$	0,88432335		
	$a =$	-2126879,7		
	$b =$	1063,6909		
	$x_1 =$	2020		
	$x_2 =$	2030		
	$y_1 =$	217.759.180	m ²	
$y_2 =$	324.128.270	m ²		
Bangka Tengah	Persamaan	Table Curve 2D		(Hasanah et al. 2015).
	$y^{0,5} = a+bx^{0,5}$			
	$r^2 =$	0,95585556		
	$a =$	29217,996		
	$b =$	-646,44278		
	$x_1 =$	2020		
	$x_2 =$	2030		
	$y_1 =$	268.981.596	m ²	
$y_2 =$	84.970.701	m ²		
Bangka Selatan	Persamaan	Table Curve 2D		(Hasanah et al. 2015).
	$y = a+bxce^{-x}$			
	$r^2 =$	0,99766013		
	$a =$	-1257547,6		
	$b =$	644,40044		
	$c =$	-6,9792996,E+87		
	$x_1 =$	2020		
	$x_2 =$	2030		
$y_1 =$	441.412.888	m ²		
$y_2 =$	505.852.932	m ²		
Pangkalpinang	Persamaan	Table Curve 2D		(Hasanah et al. 2015).
	$y^{0,5} = a+be^{-x}$			
	$r^2 =$	0,9479234		
	$a =$	33,415037		
	$b =$	-9,8584959,E+87		
	$x_1 =$	2020		
	$x_2 =$	2030		
	$y_1 =$	11.165.647	m ²	
$y_2 =$	11.165.647	m ²		

Data Pemukiman	Metode		Satuan	Sumber
	Persamaan	Table Curve 2D		
Bangka	$y^{0,5} = a+bx^3$			(Hasanah et al. 2015).
	$r^2 =$	1836,4065		
	$a =$	-1510969,9		
	$b =$	-1,9869579,E-07		
	$x_1 =$	2020		
	$x_2 =$	2030		
	$y_1 =$	394.716.487	m ²	
	$y_2 =$	303.565.715	m ²	
Bangka Barat	Persamaan	Table Curve 2D		(Hasanah et al. 2015).
	$y = a+bx$			
	$r^2 =$	0,88432335		
	$a =$	-2126879,7		
	$b =$	1063,6909		
	$x_1 =$	2020		
	$x_2 =$	2030		
	$y_1 =$	217.759.180	m ²	
$y_2 =$	324.128.270	m ²		
Bangka Tengah	Persamaan	Table Curve 2D		(Hasanah et al. 2015).
	$y = a+bx$			
	$r^2 =$	0,97347104		
	$a =$	-2474532,1		
	$b =$	1234,4419		
	$x_1 =$	2020		
	$x_2 =$	2030		
	$y_1 =$	190.405.380	m ²	
$y_2 =$	313.849.570	m ²		
Bangka Selatan	Persamaan	Table Curve 2D		(Hasanah et al. 2015).
	$y = a+bx^3$			
	$r^2 =$	0,93702269		
	$a =$	-75902,071		
	$b =$	1,5288707,E-05		
	$x_1 =$	2020		
	$x_2 =$	2030		
	$y_1 =$	501.136.899	m ²	
$y_2 =$	519.944.913	m ²		
Pangkalpinang	Diambil data luas lahan tahun terakhir			(Hasanah et al. 2015).
	$x_1 =$	2020		
	$x_2 =$	2030		
	$y_1 =$	96.370.000	m ²	
	$y_2 =$	96.370.000	m ²	

Data Hutan	Metode		Satuan	Sumber
	Persamaan	Table Curve 2D		
Bangka	$y^2 = a+bx$			(Hasanah et al. 2015).
	$r^2 =$	0,86566089		
	$a =$	-4,750682,E+11		
	$b =$	2,373110,E+08		
	$x_1 =$	2020		
	$x_2 =$	2030		
	$y_1 =$	655.745.377	m ²	
	$y_2 =$	816.922.818	m ²	
Bangka Barat	Persamaan	Table Curve 2D		(Hasanah et al. 2015).
	$y = a+be^{x-}$			
	$r^2 =$	0,8406455		
	$a =$	134834,4		
	$b =$	-4,1383833,E+87		
	$x_1 =$	2020		
	$x_2 =$	2030		
	$y_1 =$	1.348.343.700	m ²	
$y_2 =$	1.348.343.700	m ²		
Bangka Tengah	Persamaan	Table Curve 2D		(Hasanah et al. 2015).
	$y = a+bx$			
	$r^2 =$	0,9681091		
	$a =$	-7705199,1		
	$b =$	3858,7697		
	$x_1 =$	2020		
	$x_2 =$	2030		
	$y_1 =$	895.156.940	m ²	
$y_2 =$	1.281.033.910	m ²		
Bangka Selatan	Persamaan	Table Curve 2D		(Hasanah et al. 2015).
	$y^{-1} = a+bx$			
	$r^2 =$	0,81858652		
	$a =$	-0,000126495		
	$b =$	6,9900059,E-08		
	$x_1 =$	2020		
	$x_2 =$	2030		
	$y_1 =$	680.145.834	m ²	
$y_2 =$	649.277.721	m ²		
Pangkalpinang	Persamaan	Table Curve 2D		(Hasanah et al. 2015).
	$y^2 = a+bx^3$			
	$r^2 =$	0,91720794		
	$a =$	39291633		
	$b =$	-19385,11		
	$x_1 =$	2020		
	$x_2 =$	2030		
	$y_1 =$	3.656.649	m ²	
$y_2 =$	2.450.000	m ²		

Lampiran 6 Kebutuhan Air
Domestik

Tahun	Kabupaten/Kota	Kebutuhan Air Domestik Pulau Bangka (m ³)											
		31	29	31	30	31	30	31	31	30	31	30	31
		Januari	Februari	Maret	April	Mei	Juni	Juli	Agustus	September	Oktober	November	Desember
2020	Bangka	1.376.258	1.287.467	1.376.258	1.331.862	1.376.258	1.331.862	1.376.258	1.376.258	1.331.862	1.376.258	1.331.862	1.376.258
	Bangka Barat	815.662	763.038	815.662	789.350	815.662	789.350	815.662	815.662	789.350	815.662	789.350	815.662
	Bangka Tengah	751.358	702.883	751.358	727.121	751.358	727.121	751.358	751.358	727.121	751.358	727.121	751.358
	Bangka Selatan	790.807	739.787	790.807	765.297	790.807	765.297	790.807	790.807	765.297	790.807	765.297	790.807
	Pangkalpinang	816.544	763.864	816.544	790.204	816.544	790.204	816.544	816.544	790.204	816.544	790.204	816.544

Tahun	Kabupaten/Kota	Kebutuhan Air Domestik Pulau Bangka (m ³)											
		31	28	31	30	31	30	31	31	30	31	30	31
		Januari	Februari	Maret	April	Mei	Juni	Juli	Agustus	September	Oktober	November	Desember
2030	Bangka	2.229.309	2.013.570	2.229.309	2.157.396	2.229.309	2.157.396	2.229.309	2.229.309	2.157.396	2.229.309	2.157.396	2.229.309
	Bangka Barat	1.012.125	914.177	1.012.125	979.476	1.012.125	979.476	1.012.125	1.012.125	979.476	1.012.125	979.476	1.012.125
	Bangka Tengah	936.144	845.549	936.144	905.945	936.144	905.945	936.144	936.144	905.945	936.144	905.945	936.144
	Bangka Selatan	961.414	868.374	961.414	930.401	961.414	930.401	961.414	961.414	930.401	961.414	930.401	961.414
	Pangkalpinang	1.009.806	912.083	1.009.806	977.232	1.009.806	977.232	1.009.806	1.009.806	977.232	1.009.806	977.232	1.009.806

Non Domestik

Tahun	Kabupaten/Kota	Kebutuhan air Industri (m ³)											
		31	29	31	30	31	30	31	31	30	31	30	31
		Jan	Feb	Mar	Apr	Mei	Jun	Juli	Agus	Sept	Okt	Nov	Des
2020	Bangka	88.764	83.038	88.764	85.901	88.764	85.901	88.764	88.764	85.901	88.764	85.901	88.764
	Bangka Barat	54.080	50.591	54.080	52.335	54.080	52.335	54.080	54.080	52.335	54.080	52.335	54.080
	Bangka Tengah	85.924	80.380	85.924	83.152	85.924	83.152	85.924	85.924	83.152	85.924	83.152	85.924
	Bangka Selatan	54.430	50.919	54.430	52.674	54.430	52.674	54.430	54.430	52.674	54.430	52.674	54.430
	Pangkalpinang	97.000	90.742	97.000	93.871	97.000	93.871	97.000	97.000	93.871	97.000	93.871	97.000

Tahun	Kabupaten/Kota	Kebutuhan air Industri (m ³)											
		31	28	31	30	31	30	31	31	30	31	30	31
		Jan	Feb	Mar	Apr	Mei	Jun	Juli	Agus	Sept	Okt	Nov	Des
2030	Bangka	135.344	122.247	135.344	130.979	135.344	130.979	135.344	135.344	130.979	135.344	130.979	135.344
	Bangka Barat	54.080	48.846	54.080	52.335	54.080	52.335	54.080	54.080	52.335	54.080	52.335	54.080
	Bangka Tengah	97.500	88.065	97.500	94.355	97.500	94.355	97.500	97.500	94.355	97.500	94.355	97.500
	Bangka Selatan	56.250	50.806	56.250	54.435	56.250	54.435	56.250	56.250	54.435	56.250	54.435	56.250
	Pangkalpinang	97.000	87.613	97.000	93.871	97.000	93.871	97.000	97.000	93.871	97.000	93.871	97.000

Tahun	Kabupaten/Kota	Kebutuhan air Pariwisata (m ³)											
		31	29	31	30	31	30	31	31	30	31	30	31
		Jan	Feb	Mar	Apr	Mei	Jun	Juli	Agus	Sept	Okt	Nov	Des
2020	Bangka	3.965	3.710	3.965	3.837	3.965	3.837	3.965	3.965	3.837	3.965	3.837	3.965
	Bangka Barat	1.729	1.618	1.729	1.673	1.729	1.673	1.729	1.729	1.673	1.729	1.673	1.729
	Bangka Tengah	3.118	2.917	3.118	3.017	3.118	3.017	3.118	3.118	3.017	3.118	3.017	3.118
	Bangka Selatan	1.150	1.076	1.150	1.113	1.150	1.113	1.150	1.150	1.113	1.150	1.113	1.150
	Pangkalpinang	9.725	9.098	9.725	9.412	9.725	9.412	9.725	9.725	9.412	9.725	9.412	9.725

Tahun	Kabupaten/Kota	Kebutuhan air Pariwisata (m ³)											
		31	28	31	30	31	30	31	31	30	31	30	31
		Jan	Feb	Mar	Apr	Mei	Jun	Juli	Agus	Sept	Okt	Nov	Des
2030	Bangka	5.319	4.804	5.319	5.147	5.319	5.147	5.319	5.319	5.147	5.319	5.147	5.319
	Bangka Barat	2.635	2.380	2.635	2.550	2.635	2.550	2.635	2.635	2.550	2.635	2.550	2.635
	Bangka Tengah	3.118	2.816	3.118	3.017	3.118	3.017	3.118	3.118	3.017	3.118	3.017	3.118
	Bangka Selatan	1.938	1.750	1.938	1.875	1.938	1.875	1.938	1.938	1.875	1.938	1.875	1.938
	Pangkalpinang	16.933	15.294	16.933	16.387	16.933	16.387	16.933	16.933	16.387	16.933	16.387	16.933

Tahun	Kabupaten/Kota	Kebutuhan air ternak (m ³)											
		31	29	31	30	31	30	31	31	30	31	30	31
		Jan	Feb	Mar	Apr	Mei	Jun	Juli	Agus	Sept	Okt	Nov	Des
2020	Bangka	161.942	151.494	161.942	156.718	161.942	156.718	161.942	161.942	156.718	161.942	156.718	161.942
	Bangka Barat	21.270	19.898	21.270	20.584	21.270	20.584	21.270	21.270	20.584	21.270	20.584	21.270
	Bangka Tengah	35.865	33.551	35.865	34.708	35.865	34.708	35.865	35.865	34.708	35.865	34.708	35.865
	Bangka Selatan	44.182	41.331	44.182	42.756	44.182	42.756	44.182	44.182	42.756	44.182	42.756	44.182
	Pangkalpinang	129.951	121.568	129.951	125.759	129.951	125.759	129.951	129.951	125.759	129.951	125.759	129.951

Tahun	Kabupaten/Kota	Kebutuhan air ternak (m ³)											
		31	28	31	30	31	30	31	31	30	31	30	31
		Jan	Feb	Mar	Apr	Mei	Jun	Juli	Agus	Sept	Okt	Nov	Des
2030	Bangka	161.942	146.270	161.942	156.718	161.942	156.718	161.942	161.942	156.718	161.942	156.718	161.942
	Bangka Barat	21.467	19.390	21.467	20.775	21.467	20.775	21.467	21.467	20.775	21.467	20.775	21.467
	Bangka Tengah	39.065	35.285	39.065	37.805	39.065	37.805	39.065	39.065	37.805	39.065	37.805	39.065
	Bangka Selatan	44.182	39.906	44.182	42.756	44.182	42.756	44.182	44.182	42.756	44.182	42.756	44.182
	Pangkalpinang	130.283	117.675	130.283	126.080	130.283	126.080	130.283	130.283	126.080	130.283	126.080	130.283

Tahun	Jenis Lahan	Nilai Etc Kabupaten Bangka (m ³)											
		Jan	Feb	Mar	Apr	Mei	Jun	Juli	Agus	Sept	Okt	Nov	Des
2020	Kebun Campuran	24.660.469	25.002.337	28.032.998	27.343.383	26.669.895	24.896.729	25.697.586	26.917.639	28.018.821	28.753.973	26.140.087	24.548.759
	Tegalan/Ladang	16.716.309	16.948.047	19.002.407	18.534.945	18.078.416	16.876.460	17.419.328	18.246.351	18.992.797	19.491.126	17.719.281	16.640.586
	Pemukiman	0	0	0	0	0	0	0	0	0	0	0	0
	Sawah Irigasi	442.018	448.145	502.467	490.107	478.035	446.252	460.607	482.475	502.213	515.390	468.538	440.015
	Sawah Tadah Hujan	558.646	566.390	635.045	619.423	604.166	563.998	582.140	609.779	634.724	651.378	592.164	556.115
	Hutan	27.153.795	27.530.228	30.867.307	30.107.968	29.366.386	27.413.942	28.295.770	29.639.178	30.851.696	31.661.177	28.783.011	27.030.790

Tahun	Jenis Lahan	Nilai Etc Kabupaten Bangka (m ³)											
		Jan	Feb	Mar	Apr	Mei	Jun	Juli	Agus	Sept	Okt	Nov	Des
2030	Kebun Campuran	33.517.920	32.810.766	38.101.780	37.164.473	36.249.083	33.839.039	34.927.544	36.585.811	38.082.511	39.081.713	35.528.981	33.366.087
	Tegalan/Ladang	12.856.059	12.584.824	14.614.234	14.254.722	13.903.618	12.979.227	13.396.731	14.032.772	14.606.843	14.990.095	13.627.417	12.797.822
	Pemukiman	0	0	0	0	0	0	0	0	0	0	0	0
	Sawah Irigasi	442.018	432.692	502.467	490.107	478.035	446.252	460.607	482.475	502.213	515.390	468.538	440.015
	Sawah Tadah Hujan	558.646	546.860	635.045	619.423	604.166	563.998	582.140	609.779	634.724	651.378	592.164	556.115
	Hutan	33.826.735	33.113.066	38.452.829	37.506.885	36.583.062	34.150.813	35.249.347	36.922.893	38.433.382	39.441.790	35.856.325	33.673.503

Tahun	Jenis Lahan	Nilai Etc Kabupaten Bangka Barat (m ³)											
		Jan	Feb	Mar	Apr	Mei	Jun	Juli	Agus	Sept	Okt	Nov	Des
2020	Kebun Campuran	18.043.113	18.293.245	20.510.662	20.006.098	19.513.332	18.215.976	18.801.931	19.694.597	20.500.289	21.038.172	19.125.692	17.961.379
	Tegalan/Ladang	9.222.138	9.349.984	10.483.343	10.225.452	9.973.591	9.310.491	9.609.982	10.066.239	10.478.042	10.752.962	9.775.462	9.180.362
	Pemukiman	0	0	0	0	0	0	0	0	0	0	0	0
	Sawah Irigasi	536.099	543.531	609.415	594.423	579.782	541.235	558.645	585.168	609.107	625.089	568.265	533.671
	Sawah Tadah Hujan	1.027.493	1.041.737	1.168.011	1.139.278	1.111.217	1.037.337	1.070.705	1.121.539	1.167.421	1.198.051	1.089.142	1.022.838
	Hutan	55.833.635	56.607.656	63.469.359	61.908.006	60.383.165	56.368.551	58.181.765	60.944.081	63.437.261	65.101.715	59.183.629	55.580.713

Tahun	Jenis Lahan	Nilai Etc Kabupaten Bangka Barat (m ³)											
		Jan	Feb	Mar	Apr	Mei	Jun	Juli	Agus	Sept	Okt	Nov	Des
2030	Kebun Campuran	25.354.400	24.819.478	28.821.830	28.112.810	27.420.370	25.597.309	26.420.701	27.675.086	28.807.254	29.563.093	26.875.653	25.239.547
	Tegalan/Ladang	13.726.886	13.437.279	15.604.155	15.220.291	14.845.404	13.858.397	14.304.182	14.983.307	15.596.263	16.005.475	14.550.494	13.664.705
	Pemukiman	0	0	0	0	0	0	0	0	0	0	0	0
	Sawah Irigasi	536.099	524.789	609.415	594.423	579.782	541.235	558.645	585.168	609.107	625.089	568.265	533.671
	Sawah Tadah Hujan	1.027.493	1.005.815	1.168.011	1.139.278	1.111.217	1.037.337	1.070.705	1.121.539	1.167.421	1.198.051	1.089.142	1.022.838
	Hutan	55.833.635	54.655.668	63.469.359	61.908.006	60.383.165	56.368.551	58.181.765	60.944.081	63.437.261	65.101.715	59.183.629	55.580.713

Tahun	Jenis Lahan	Nilai Etc Kabupaten Bangka Tengah (m ³)											
		Jan	Feb	Mar	Apr	Mei	Jun	Juli	Agus	Sept	Okt	Nov	Des
2020	Kebun Campuran	8.925.953	9.049.693	10.146.652	9.897.044	9.653.272	9.011.468	9.301.341	9.742.944	10.141.521	10.407.612	9.461.506	8.885.519
	Tegalan/Ladang	11.391.416	11.549.335	12.949.288	12.630.735	12.319.630	11.500.551	11.870.491	12.434.071	12.942.740	13.282.329	12.074.896	11.339.813
	Pemukiman	0	0	0	0	0	0	0	0	0	0	0	0
	Sawah Irigasi	37.926	38.452	43.113	42.052	41.017	38.290	39.521	41.398	43.091	44.222	40.202	37.754
	Sawah Tadah Hujan	16.458	16.686	18.708	18.248	17.799	16.615	17.150	17.964	18.699	19.189	17.445	16.383
	Hutan	37.067.601	37.581.469	42.136.910	41.100.338	40.088.005	37.422.728	38.626.510	40.460.394	42.115.600	43.220.621	39.291.641	36.899.687

Tahun	Jenis Lahan	Nilai Etc Kabupaten Bangka Tengah (m ³)											
		Jan	Feb	Mar	Apr	Mei	Jun	Juli	Agus	Sept	Okt	Nov	Des
2030	Kebun Campuran	10.937.992	10.707.225	12.433.856	12.127.982	11.829.260	11.042.784	11.397.999	11.939.146	12.427.568	12.753.640	11.594.267	10.888.444
	Tegalan/Ladang	3.598.523	3.522.602	4.090.652	3.990.022	3.891.744	3.632.999	3.749.862	3.927.896	4.088.583	4.195.859	3.814.433	3.582.222
	Pemukiman	0	0	0	0	0	0	0	0	0	0	0	0
	Sawah Irigasi	68.799	67.347	78.208	76.284	74.405	69.458	71.692	75.096	78.168	80.219	72.927	68.487
	Sawah Tadah Hujan	16.458	16.110	18.708	18.248	17.799	16.615	17.150	17.964	18.699	19.189	17.445	16.383
	Hutan	53.046.400	51.927.238	60.300.946	58.817.537	57.368.816	53.554.613	55.277.311	57.901.731	60.270.450	61.851.815	56.229.162	52.806.104

Tahun	Jenis Lahan	Nilai Etc Kabupaten Bangka Selatan (m ³)											
		Jan	Feb	Mar	Apr	Mei	Jun	Juli	Agus	Sept	Okt	Nov	Des
2020	Kebun Campuran	21.562.548	21.861.469	24.511.409	23.908.426	23.319.543	21.769.128	22.469.379	23.536.165	24.499.013	25.141.813	22.856.291	21.464.871
	Tegalan/Ladang	18.693.910	18.953.063	21.250.461	20.727.697	20.217.158	18.873.007	19.480.098	20.404.961	21.239.714	21.796.997	19.815.536	18.609.228
	Pemukiman	0	0	0	0	0	0	0	0	0	0	0	0
	Sawah Irigasi	1.685.793	1.709.163	1.916.340	1.869.198	1.823.158	1.701.944	1.756.691	1.840.094	1.915.371	1.965.626	1.786.940	1.678.157
	Sawah Tadah Hujan	3.851.042	3.904.429	4.377.705	4.270.013	4.164.839	3.887.937	4.013.001	4.203.527	4.375.491	4.490.294	4.082.103	3.833.597
	Hutan	28.164.194	28.554.635	32.015.887	31.228.293	30.459.117	28.434.022	29.348.663	30.742.060	31.999.696	32.839.298	29.854.034	28.036.613

Tahun	Jenis Lahan	Nilai Etc Kabupaten Bangka Selatan (m ³)											
		Jan	Feb	Mar	Apr	Mei	Jun	Juli	Agus	Sept	Okt	Nov	Des
2030	Kebun Campuran	39.679.696	38.842.542	45.106.231	43.996.614	42.912.944	40.059.849	41.348.459	43.311.574	45.083.420	46.266.310	42.060.461	39.499.950
	Tegalan/Ladang	21.422.956	20.970.979	24.352.728	23.753.648	23.168.578	21.628.200	22.323.917	23.383.797	24.340.412	24.979.051	22.708.324	21.325.912
	Pemukiman	0	0	0	0	0	0	0	0	0	0	0	0
	Sawah Irigasi	687.111	672.614	781.079	761.864	743.099	693.694	716.008	750.002	780.684	801.167	728.337	683.998
	Sawah Tadah Hujan	3.851.042	3.769.793	4.377.705	4.270.013	4.164.839	3.887.937	4.013.001	4.203.527	4.375.491	4.490.294	4.082.103	3.833.597
	Hutan	26.885.975	26.318.740	30.562.861	29.811.011	29.076.743	27.143.557	28.016.687	29.346.845	30.547.404	31.348.901	28.499.122	26.764.184

Tahun	Jenis Lahan	Nilai Etc Kota Pangkalpinang (m ³)											
		Jan	Feb	Mar	Apr	Mei	Jun	Juli	Agus	Sept	Okt	Nov	Des
2020	Kebun Campuran	205.275	208.121	233.348	227.608	222.001	207.242	213.908	224.064	233.230	239.349	217.591	204.345
	Tegalan/Ladang	472.867	479.422	537.536	524.312	511.398	477.397	492.754	516.148	537.264	551.360	501.239	470.725
	Pemukiman	0	0	0	0	0	0	0	0	0	0	0	0
	Sawah Irigasi	0	0	0	0	0	0	0	0	0	0	0	0
	Sawah Tadah Hujan	0	0	0	0	0	0	0	0	0	0	0	0
	Hutan	151.418	153.517	172.126	167.892	163.756	152.869	157.786	165.278	172.039	176.553	160.503	150.732

Tahun	Jenis Lahan	Nilai Etc Kota Pangkalpinang (m ³)											
		Jan	Feb	Mar	Apr	Mei	Jun	Juli	Agus	Sept	Okt	Nov	Des
2030	Kebun Campuran	205.275	200.944	233.348	227.608	222.001	207.242	213.908	224.064	233.230	239.349	217.591	204.345
	Tegalan/Ladang	472.867	462.891	537.536	524.312	511.398	477.397	492.754	516.148	537.264	551.360	501.239	470.725
	Pemukiman	0	0	0	0	0	0	0	0	0	0	0	0
	Sawah Irigasi	0	0	0	0	0	0	0	0	0	0	0	0
	Sawah Tadah Hujan	0	0	0	0	0	0	0	0	0	0	0	0
	Hutan	101.452	99.312	115.327	112.490	109.719	102.424	105.719	110.738	115.268	118.293	107.539	100.993

Lampiran 7 Tabel Neraca Air

Tahun	Kabupaten/Kota	Komponen	Deskripsi	Satuan	Januari	Februari	Maret	April	Mei	Juni	Juli	Agustus	September	Oktober	November	Desember	
2020	Bangka	Ketersediaan Air	Curah Hujan	m³	556.641.767	207.167.945	466.327.048	484.709.846	405.424.806	327.526.590	247.562.891	70.179.211	38.358.970	118.027.600	529.117.731	628.851.053	
		Kebutuhan Air	Domestik (penduduk)	m³	1.376.258	1.287.467	1.376.258	1.331.862	1.376.258	1.331.862	1.376.258	1.376.258	1.376.258	1.331.862	1.376.258	1.331.862	1.376.258
			Non Domestik (industri)	m³	88.764	83.038	88.764	85.901	88.764	85.901	88.764	88.764	88.764	85.901	88.764	85.901	88.764
			Non Domestik (pariwisata)	m³	3.965	3.710	3.965	3.837	3.965	3.837	3.965	3.837	3.965	3.965	3.837	3.965	3.837
			Non Domestik (peternakan)	m³	161.942	151.494	161.942	156.718	161.942	156.718	161.942	156.718	161.942	161.942	156.718	161.942	156.718
			Kehilangan Air (Etc)	m³	69.531.236	70.495.148	79.040.223	77.095.826	75.196.897	70.197.382	72.455.431	75.895.422	79.000.251	81.073.044	73.703.081	69.216.265	
Neraca Air			m³	485.479.601	135.147.089	385.655.895	406.035.701	328.596.979	255.750.889	173.476.531	-7.347.141	-42.219.600	35.323.627	453.836.331	558.003.858		
2020	Bangka Barat	Ketersediaan Air	Curah Hujan	m³	532.102.435	198.035.028	445.769.204	463.341.605	387.551.814	313.087.710	236.649.179	67.085.388	36.667.930	112.824.400	505.791.785	601.128.403	
		Kebutuhan Air	Domestik (penduduk)	m³	815.662	763.038	815.662	789.350	815.662	789.350	815.662	815.662	815.662	789.350	815.662	789.350	
			Non Domestik (industri)	m³	54.080	50.591	54.080	52.335	54.080	52.335	54.080	54.080	54.080	52.335	54.080	52.335	
			Non Domestik (pariwisata)	m³	1.729	1.618	1.729	1.673	1.729	1.673	1.729	1.673	1.729	1.673	1.729	1.673	
			Non Domestik (peternakan)	m³	21.270	19.898	21.270	20.584	21.270	20.584	21.270	21.270	21.270	20.584	21.270	20.584	
			Kehilangan Air (Etc)	m³	84.662.477	85.836.153	96.240.790	93.873.257	91.561.087	85.473.589	88.223.029	92.411.624	96.192.119	98.715.989	89.742.190	84.278.963	
Neraca Air			m³	446.547.217	111.363.731	348.635.674	368.604.405	295.097.986	226.750.179	147.533.419	-26.218.977	-60.388.131	13.215.671	415.185.653	515.956.700		
2020	Bangka Tengah	Ketersediaan Air	Curah Hujan	m³	401.133.561	149.291.736	336.049.934	349.297.157	292.161.864	236.025.960	178.401.604	50.573.346	27.642.680	85.054.400	381.298.875	453.169.843	
		Kebutuhan Air	Domestik (penduduk)	m³	751.358	702.883	751.358	727.121	751.358	727.121	751.358	751.358	751.358	727.121	751.358	727.121	
			Non Domestik (industri)	m³	85.924	80.380	85.924	83.152	85.924	83.152	85.924	85.924	85.924	83.152	85.924	83.152	
			Non Domestik (pariwisata)	m³	3.118	2.917	3.118	3.017	3.118	3.017	3.118	3.118	3.118	3.017	3.118	3.017	
			Non Domestik (peternakan)	m³	35.865	33.551	35.865	34.708	35.865	34.708	35.865	35.865	35.865	34.708	35.865	34.708	
			Kehilangan Air (Etc)	m³	57.439.353	58.235.634	65.294.672	63.688.417	62.119.722	57.989.652	59.855.013	62.696.770	65.261.651	66.973.973	60.885.689	57.179.157	
Neraca Air			m³	342.817.944	90.236.370	269.878.998	284.760.743	229.165.877	177.188.310	117.670.327	-12.999.688	-38.466.969	17.204.162	319.565.188	395.114.422		
2020	Bangka Selatan	Ketersediaan Air	Curah Hujan	m³	680.468.428	253.253.087	570.062.923	592.535.032	495.612.792	400.385.880	302.634.012	85.790.791	46.892.040	144.283.200	646.821.586	768.740.890	
		Kebutuhan Air	Domestik (penduduk)	m³	790.807	739.787	790.807	765.297	790.807	765.297	790.807	790.807	790.807	765.297	790.807	765.297	
			Non Domestik (industri)	m³	54.430	50.919	54.430	52.674	54.430	52.674	54.430	54.430	54.430	52.674	54.430	52.674	
			Non Domestik (pariwisata)	m³	1.150	1.076	1.150	1.113	1.150	1.113	1.150	1.150	1.150	1.113	1.150	1.113	
			Non Domestik (peternakan)	m³	44.182	41.331	44.182	42.756	44.182	42.756	44.182	44.182	44.182	42.756	44.182	42.756	
			Kehilangan Air (Etc)	m³	73.957.487	74.982.759	84.071.801	82.003.627	79.983.815	74.666.039	77.067.831	80.726.807	84.029.284	86.234.028	78.394.904	73.622.465	
Neraca Air			m³	605.620.373	177.437.215	485.100.553	509.669.564	414.738.409	324.858.001	224.675.613	4.173.415	-37.999.085	57.158.604	567.564.841	694.227.856		
2020	Pangkalpinang	Ketersediaan Air	Curah Hujan	m³	22.411.382	8.340.948	18.775.152	19.515.276	16.323.120	13.186.800	9.967.320	2.825.539	1.544.400	4.752.000	21.303.216	25.318.656	
		Kebutuhan Air	Domestik (penduduk)	m³	816.544	763.864	816.544	790.204	816.544	790.204	816.544	816.544	816.544	790.204	816.544	790.204	
			Non Domestik (industri)	m³	97.000	90.742	97.000	93.871	97.000	93.871	97.000	97.000	97.000	93.871	97.000	93.871	
			Non Domestik (pariwisata)	m³	9.725	9.098	9.725	9.412	9.725	9.412	9.725	9.412	9.725	9.412	9.725	9.412	
			Non Domestik (peternakan)	m³	129.951	121.568	129.951	125.759	129.951	125.759	129.951	129.951	129.951	125.759	129.951	125.759	
			Kehilangan Air (Etc)	m³	829.560	841.060	943.010	919.812	897.156	837.508	864.448	905.490	942.533	967.263	879.334	825.802	
Neraca Air			m³	20.528.601	6.514.616	16.778.921	17.576.218	14.372.743	11.330.046	8.049.651	866.829	-417.379	2.731.516	19.404.637	23.439.633		

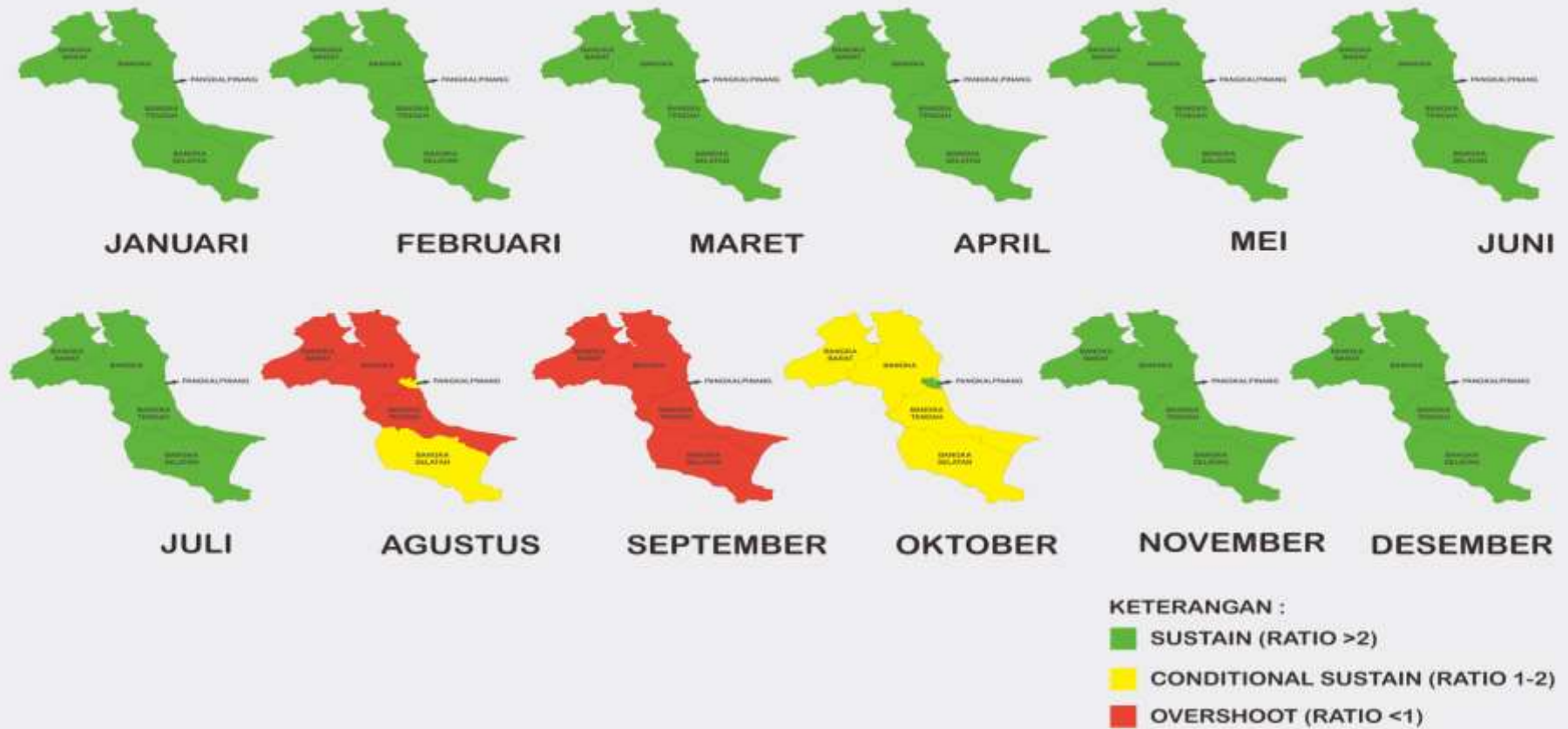
Tahun	Kabupaten/Kota	Komponen	Deskripsi	Satuan	Januari	Februari	Maret	April	Mei	Juni	Juli	Agustus	September	Oktober	November	Desember	
2030	Bangka	Ketersediaan Air	Curah Hujan	m ³	556.641.767	207.167.945	466.327.048	484.709.846	405.424.806	327.526.590	247.562.891	70.179.211	38.358.970	118.027.600	529.117.731	628.851.053	
		Kebutuhan Air	Domestik (penduduk)	m ³	2.229.309	2.013.570	2.229.309	2.157.396	2.229.309	2.157.396	2.229.309	2.229.309	2.229.309	2.157.396	2.229.309	2.157.396	2.229.309
			Non Domestik (industri)	m ³	135.344	122.247	135.344	130.979	135.344	130.979	135.344	130.979	135.344	130.979	135.344	130.979	135.344
			Non Domestik (pariwisata)	m ³	5.319	4.804	5.319	5.147	5.319	5.147	5.319	5.147	5.319	5.147	5.319	5.147	5.319
			Non Domestik (peternakan)	m ³	161.942	146.270	161.942	156.718	161.942	156.718	161.942	156.718	161.942	156.718	161.942	156.718	161.942
			Kehilangan Air (Etc)	m ³	81.201.377	79.488.207	92.306.356	90.035.610	87.817.964	81.979.330	84.616.369	88.633.730	92.259.674	94.680.365	86.073.425	80.833.542	
Neraca Air			m ³	472.908.475	125.392.847	371.488.777	392.223.996	315.074.927	243.097.020	160.414.607	-20.986.434	-56.350.944	20.815.320	440.594.066	545.485.596		
2030	Bangka Barat	Ketersediaan Air	Curah Hujan	m ³	532.102.435	198.035.028	445.769.204	463.341.605	387.551.814	313.087.710	236.649.179	67.085.388	36.667.930	112.824.400	505.791.785	601.128.403	
		Kebutuhan Air	Domestik (penduduk)	m ³	1.012.125	914.177	1.012.125	979.476	1.012.125	979.476	1.012.125	1.012.125	979.476	1.012.125	979.476	1.012.125	
			Non Domestik (industri)	m ³	54.080	48.846	54.080	52.335	54.080	52.335	54.080	54.080	52.335	54.080	52.335	54.080	
			Non Domestik (pariwisata)	m ³	2.635	2.380	2.635	2.550	2.635	2.550	2.635	2.550	2.635	2.550	2.635	2.550	
			Non Domestik (peternakan)	m ³	21.467	19.390	21.467	20.775	21.467	20.775	21.467	20.775	21.467	20.775	21.467	20.775	
			Kehilangan Air (Etc)	m ³	96.478.513	94.443.029	109.672.770	106.974.809	104.339.938	97.402.829	100.535.998	105.309.181	109.617.305	112.493.423	102.267.183	96.041.474	
Neraca Air			m ³	434.533.615	102.607.205	335.006.128	355.311.660	282.121.569	214.629.745	135.022.874	-39.314.100	-74.004.511	-759.330	402.469.466	503.996.622		
2030	Bangka Tengah	Ketersediaan Air	Curah Hujan	m ³	401.133.561	149.291.736	336.049.934	349.297.157	292.161.864	236.025.960	178.401.604	50.573.346	27.642.680	85.054.400	381.298.875	453.169.843	
		Kebutuhan Air	Domestik (penduduk)	m ³	936.144	845.549	936.144	905.945	936.144	905.945	936.144	936.144	905.945	936.144	905.945	936.144	
			Non Domestik (industri)	m ³	97.500	88.065	97.500	94.355	97.500	94.355	97.500	97.500	94.355	97.500	94.355	97.500	
			Non Domestik (pariwisata)	m ³	3.118	2.816	3.118	3.017	3.118	3.017	3.118	3.118	3.017	3.118	3.017	3.118	
			Non Domestik (peternakan)	m ³	39.065	35.285	39.065	37.805	39.065	37.805	39.065	37.805	39.065	37.805	39.065	37.805	
			Kehilangan Air (Etc)	m ³	67.668.173	66.240.523	76.922.370	75.030.072	73.182.024	68.316.470	70.514.014	73.861.833	76.883.468	78.900.722	71.728.234	67.361.641	
Neraca Air			m ³	332.389.562	82.079.498	258.051.737	273.225.962	217.904.013	166.668.368	106.811.763	-24.364.313	-50.281.911	5.077.851	308.529.518	384.732.375		
2030	Bangka Selatan	Ketersediaan Air	Curah Hujan	m ³	680.468.428	253.253.087	570.062.923	592.535.032	495.612.792	400.385.880	302.634.012	85.790.791	46.892.040	144.283.200	646.821.586	768.740.890	
		Kebutuhan Air	Domestik (penduduk)	m ³	961.414	868.374	961.414	930.401	961.414	930.401	961.414	961.414	930.401	961.414	930.401	961.414	
			Non Domestik (industri)	m ³	56.250	50.806	56.250	54.435	56.250	54.435	56.250	56.250	54.435	56.250	54.435	56.250	
			Non Domestik (pariwisata)	m ³	1.938	1.750	1.938	1.875	1.938	1.875	1.938	1.938	1.875	1.938	1.875	1.938	
			Non Domestik (peternakan)	m ³	44.182	39.906	44.182	42.756	44.182	42.756	44.182	44.182	42.756	44.182	42.756	44.182	
			Kehilangan Air (Etc)	m ³	92.526.780	90.574.669	105.180.603	102.593.150	100.066.202	93.413.236	96.418.071	100.995.746	105.127.411	107.885.723	98.078.347	92.107.641	
Neraca Air			m ³	586.877.864	161.717.581	463.818.536	488.912.414	394.482.806	305.943.176	205.152.157	-16.268.739	-59.264.839	35.333.694	547.713.770	675.569.465		
2030	Pangkalpinang	Ketersediaan Air	Curah Hujan	m ³	22.411.382	8.340.948	18.775.152	19.515.276	16.323.120	13.186.800	9.967.320	2.825.539	1.544.400	4.752.000	21.303.216	25.318.656	
		Kebutuhan Air	Domestik (penduduk)	m ³	1.009.806	912.083	1.009.806	977.232	1.009.806	977.232	1.009.806	1.009.806	977.232	1.009.806	977.232	1.009.806	
			Non Domestik (industri)	m ³	97.000	87.613	97.000	93.871	97.000	93.871	97.000	93.871	97.000	93.871	97.000	93.871	
			Non Domestik (pariwisata)	m ³	16.933	15.294	16.933	16.387	16.933	16.387	16.933	16.933	16.387	16.933	16.387	16.933	
			Non Domestik (peternakan)	m ³	130.283	117.675	130.283	126.080	130.283	126.080	130.283	126.080	130.283	126.080	130.283	126.080	
			Kehilangan Air (Etc)	m ³	779.594	763.146	886.210	864.409	843.118	787.063	812.381	850.950	885.762	909.002	826.369	776.063	
Neraca Air			m ³	20.377.767	6.445.137	16.634.920	17.437.298	14.225.980	11.186.168	7.900.918	720.568	-554.931	2.588.976	19.263.278	23.288.572		

Lampiran 8 Daya Dukung Lingkungan

Tahun	Kabupaten/Kota	Komponen	Satuan	Januari	Februari	Maret	April	Mei	Juni	Juli	Agustus	September	Oktober	November	Desember
2020	Bangka	Ketersediaan Air	m ³	556.641.767	207.167.945	466.327.048	484.709.846	405.424.806	327.526.590	247.562.891	70.179.211	38.358.970	118.027.600	529.117.731	628.851.053
		Kebutuhan Air	m ³	71.162.166	72.020.856	80.671.153	78.674.145	76.827.827	71.775.701	74.086.360	77.526.352	80.578.570	82.703.973	75.281.399	70.847.195
		Daya Dukung Lingkungan	rasio	7,8	2,9	5,8	6,2	5,3	4,6	3,3	0,9	0,5	1,4	7,0	8,9
2020	Bangka Barat	Ketersediaan Air	m ³	532.102.435	198.035.028	445.769.204	463.341.605	387.551.814	313.087.710	236.649.179	67.085.388	36.667.930	112.824.400	505.791.785	601.128.403
		Kebutuhan Air	m ³	85.555.218	86.671.297	97.133.531	94.737.200	92.453.828	86.337.531	89.115.769	93.304.365	97.056.061	99.608.729	90.606.132	85.171.704
		Daya Dukung Lingkungan	rasio	6,2	2,3	4,6	4,9	4,2	3,6	2,7	0,7	0,4	1,1	5,6	7,1
2020	Bangka Tengah	Ketersediaan Air	m ³	401.133.561	149.291.736	336.049.934	349.297.157	292.161.864	236.025.960	178.401.604	50.573.346	27.642.680	85.054.400	381.298.875	453.169.843
		Kebutuhan Air	m ³	58.315.617	59.055.366	66.170.937	64.536.415	62.995.987	58.837.650	60.731.277	63.573.035	66.109.649	67.850.238	61.733.687	58.055.422
		Daya Dukung Lingkungan	rasio	6,9	2,5	5,1	5,4	4,6	4,0	2,9	0,8	0,4	1,3	6,2	7,8
2020	Bangka Selatan	Ketersediaan Air	m ³	680.468.428	253.253.087	570.062.923	592.535.032	495.612.792	400.385.880	302.634.012	85.790.791	46.892.040	144.283.200	646.821.586	768.740.890
		Kebutuhan Air	m ³	74.848.055	75.815.872	84.962.370	82.865.467	80.874.383	75.527.879	77.958.399	81.617.376	84.891.125	87.124.596	79.256.745	74.513.034
		Daya Dukung Lingkungan	rasio	9,1	3,3	6,7	7,2	6,1	5,3	3,9	1,1	0,6	1,7	8,2	10,3
2020	Pangkalpinang	Ketersediaan Air	m ³	22.411.382	8.340.948	18.775.152	19.515.276	16.323.120	13.186.800	9.967.320	2.825.539	1.544.400	4.752.000	21.303.216	25.318.656
		Kebutuhan Air	m ³	1.882.781	1.826.332	1.996.231	1.939.058	1.950.377	1.856.754	1.917.669	1.958.711	1.961.779	2.020.484	1.898.579	1.879.023
		Daya Dukung Lingkungan	rasio	11,9	4,6	9,4	10,1	8,4	7,1	5,2	1,4	0,8	2,4	11,2	13,5

Tahun	Kabupaten/Kota	Komponen	Satuan	Januari	Februari	Maret	April	Mei	Juni	Juli	Agustus	September	Oktober	November	Desember
2030	Bangka	Ketersediaan Air	m ³	556.641.767	207.167.945	466.327.048	484.709.846	405.424.806	327.526.590	247.562.891	70.179.211	38.358.970	118.027.600	529.117.731	628.851.053
		Kebutuhan Air	m ³	83.733.292	81.775.098	94.838.270	92.485.850	90.349.879	84.429.570	87.148.284	91.165.645	94.709.914	97.212.280	88.523.665	83.365.456
		Daya Dukung Lingkungan	rasio	6,6	2,5	4,9	5,2	4,5	3,9	2,8	0,8	0,4	1,2	6,0	7,5
2030	Bangka Barat	Ketersediaan Air	m ³	532.102.435	198.035.028	445.769.204	463.341.605	387.551.814	313.087.710	236.649.179	67.085.388	36.667.930	112.824.400	505.791.785	601.128.403
		Kebutuhan Air	m ³	97.568.821	95.427.823	110.763.077	108.029.945	105.430.245	98.457.965	101.626.305	106.399.488	110.672.441	113.583.730	103.322.319	97.131.781
		Daya Dukung Lingkungan	rasio	5,5	2,1	4,0	4,3	3,7	3,2	2,3	0,6	0,3	1,0	4,9	6,2
2030	Bangka Tengah	Ketersediaan Air	m ³	401.133.561	149.291.736	336.049.934	349.297.157	292.161.864	236.025.960	178.401.604	50.573.346	27.642.680	85.054.400	381.298.875	453.169.843
		Kebutuhan Air	m ³	68.744.000	67.212.238	77.998.197	76.071.195	74.257.851	69.357.592	71.589.841	74.937.660	77.924.591	79.976.549	72.769.357	68.437.468
		Daya Dukung Lingkungan	rasio	5,8	2,2	4,3	4,6	3,9	3,4	2,5	0,7	0,4	1,1	5,2	6,6
2030	Bangka Selatan	Ketersediaan Air	m ³	680.468.428	253.253.087	570.062.923	592.535.032	495.612.792	400.385.880	302.634.012	85.790.791	46.892.040	144.283.200	646.821.586	768.740.890
		Kebutuhan Air	m ³	93.590.564	91.535.506	106.244.387	103.622.618	101.129.986	94.442.704	97.481.855	102.059.529	106.156.879	108.949.506	99.107.815	93.171.425
		Daya Dukung Lingkungan	rasio	7,3	2,8	5,4	5,7	4,9	4,2	3,1	0,8	0,4	1,3	6,5	8,3
2030	Pangkalpinang	Ketersediaan Air	m ³	22.411.382	8.340.948	18.775.152	19.515.276	16.323.120	13.186.800	9.967.320	2.825.539	1.544.400	4.752.000	21.303.216	25.318.656
		Kebutuhan Air	m ³	2.033.615	1.895.811	2.140.232	2.077.978	2.097.140	2.000.632	2.066.402	2.104.972	2.099.331	2.163.024	2.039.938	2.030.084
		Daya Dukung Lingkungan	rasio	11,0	4,4	8,8	9,4	7,8	6,6	4,8	1,3	0,7	2,2	10,4	12,5

PETA DAYA DUKUNG LINGKUNGAN PULAU BANGKA TAHUN 2020



PETA DAYA DUKUNG LINGKUNGAN PULAU BANGKA TAHUN 2030

