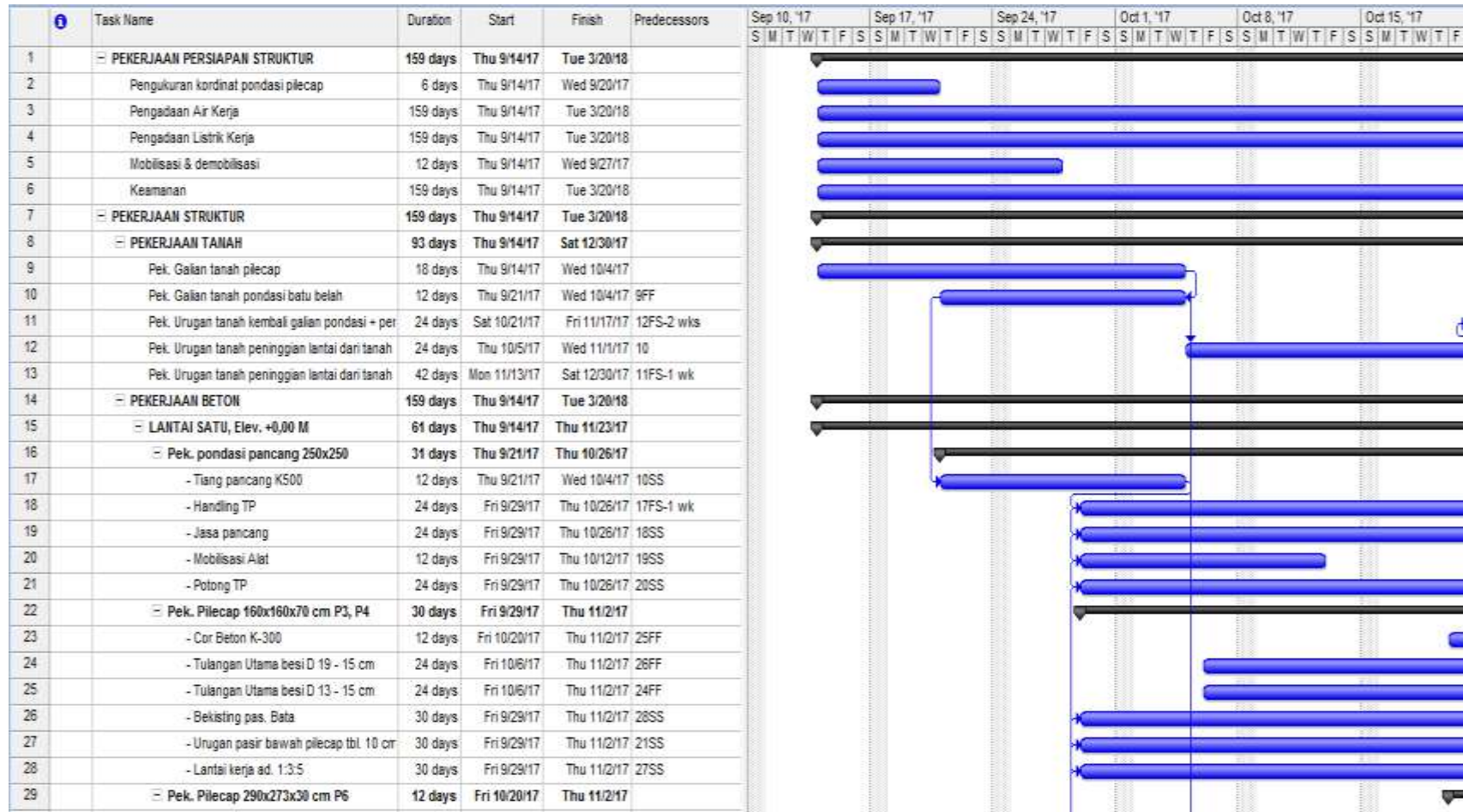
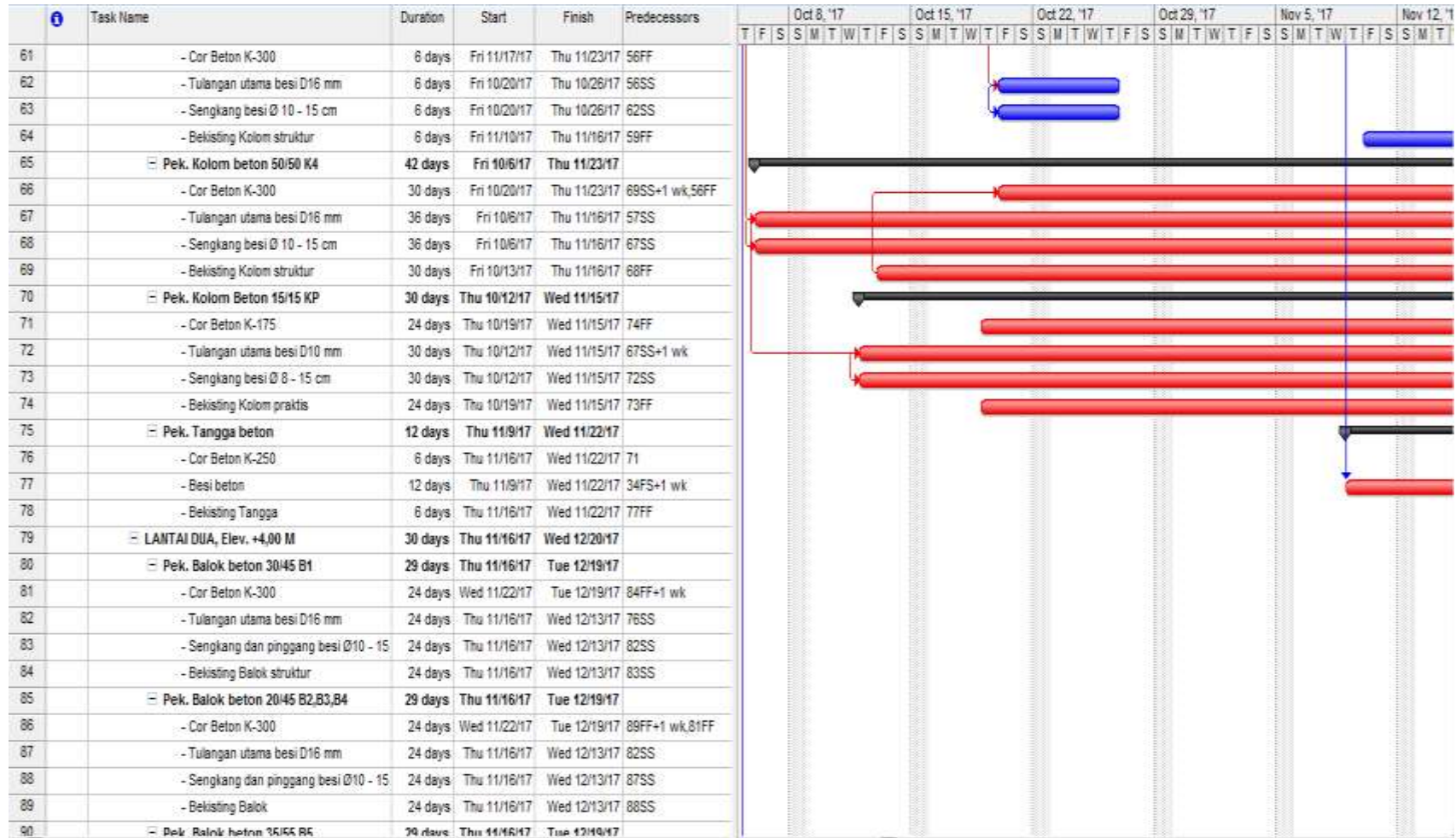


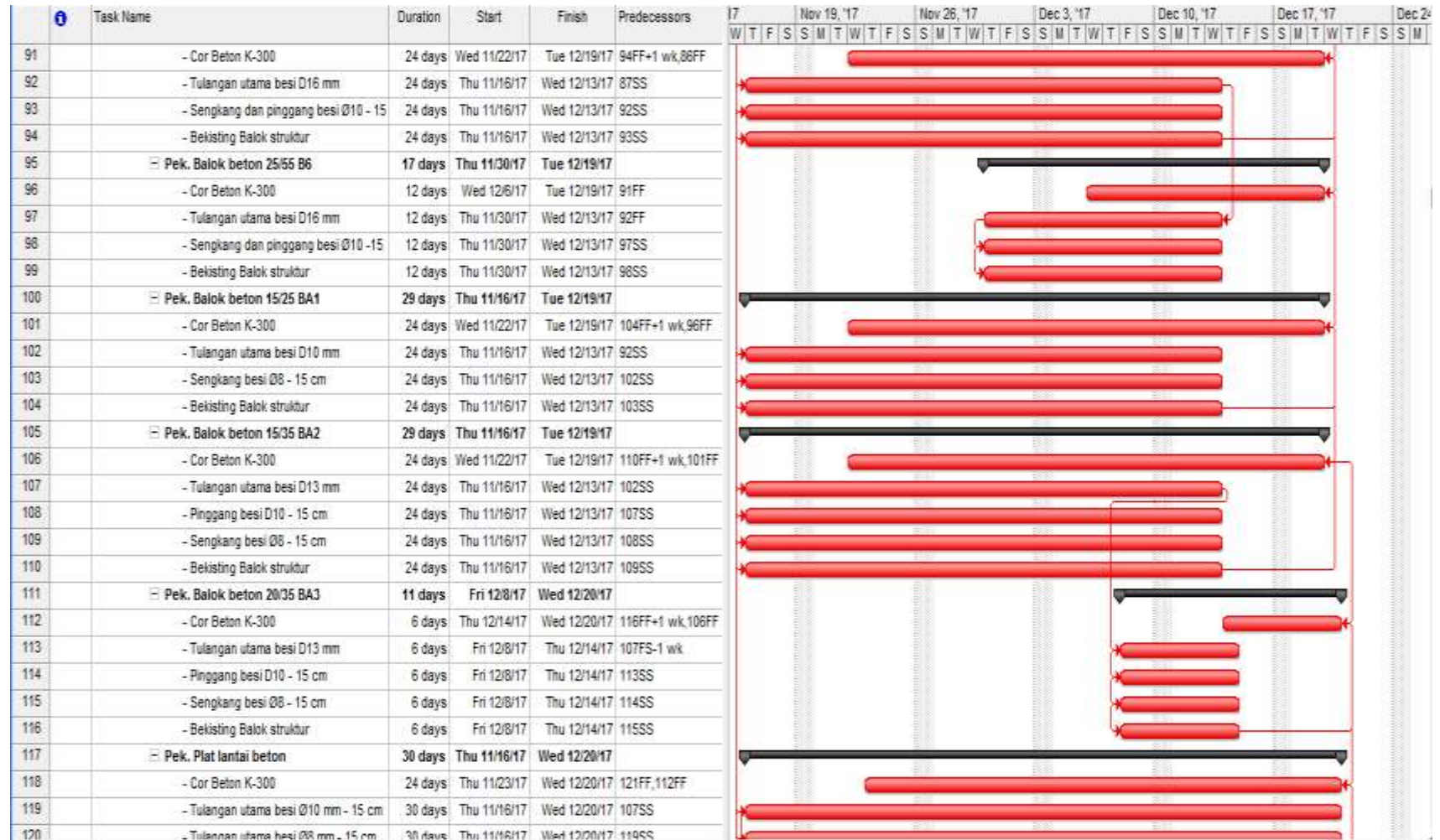
Lampiran 3. Diagram pekerjaan



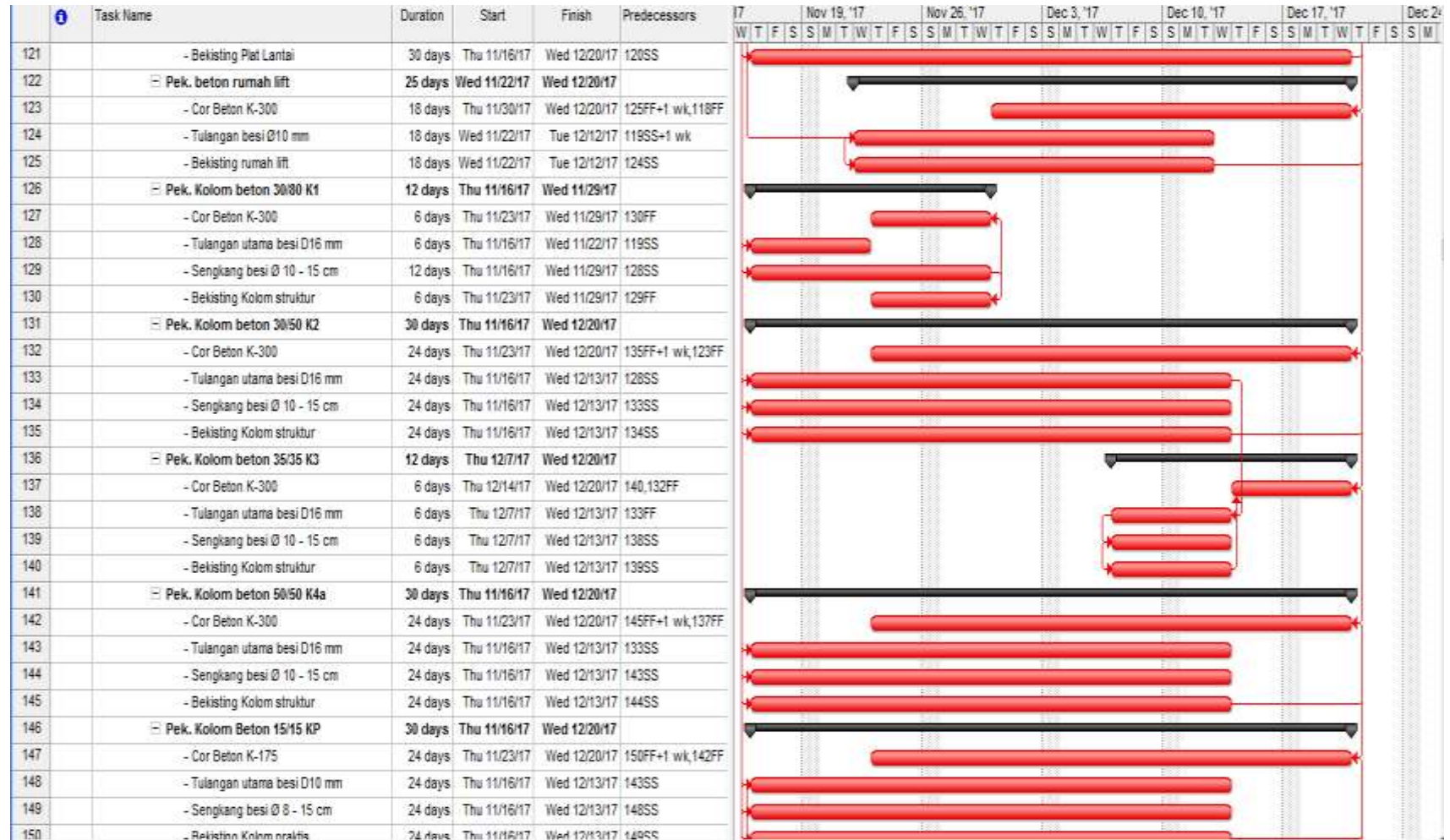
Lanjutan lampiran 3. Diagram pekerjaan



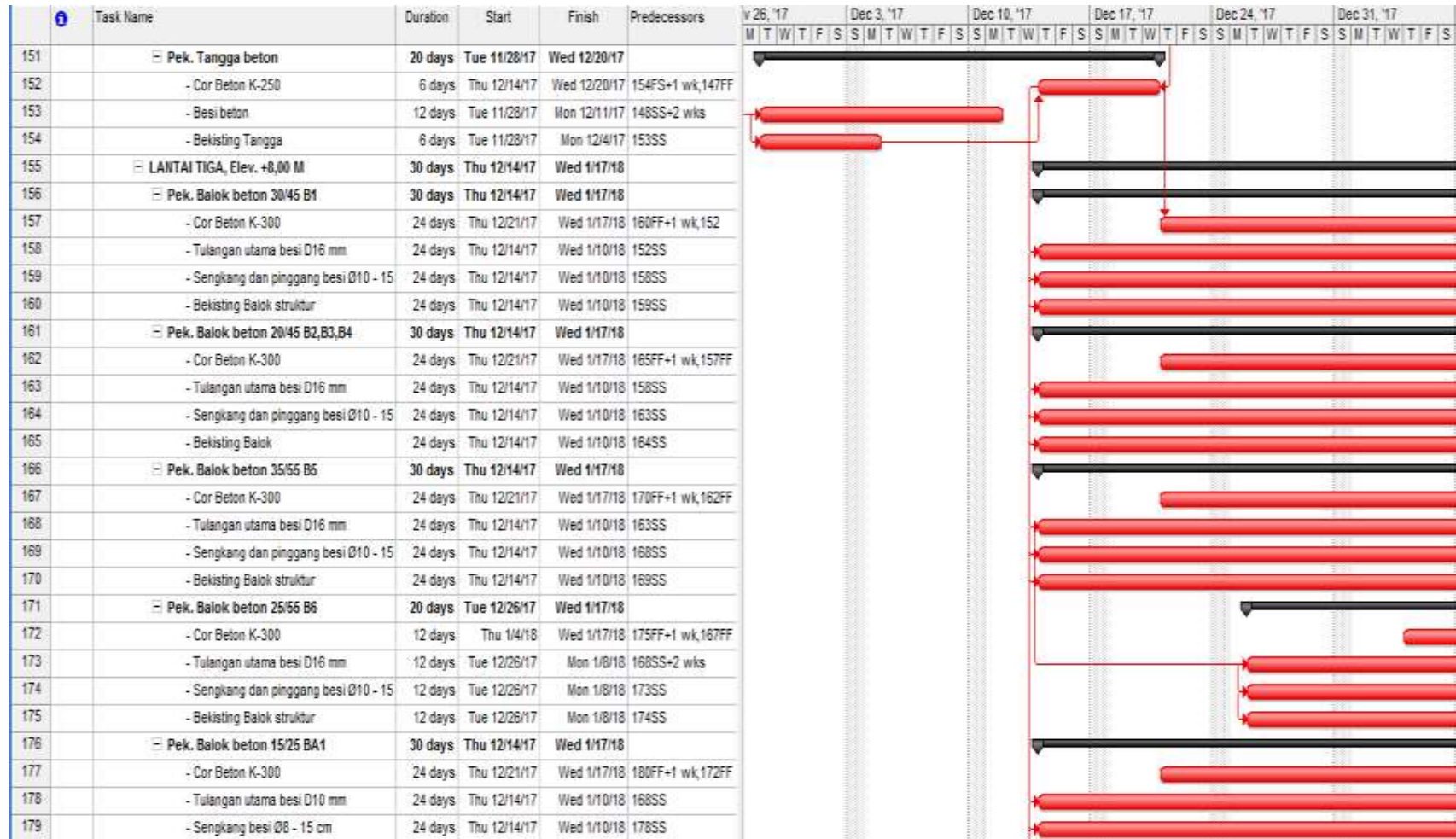
Lanjutan lampiran 3. Diagram pekerjaan



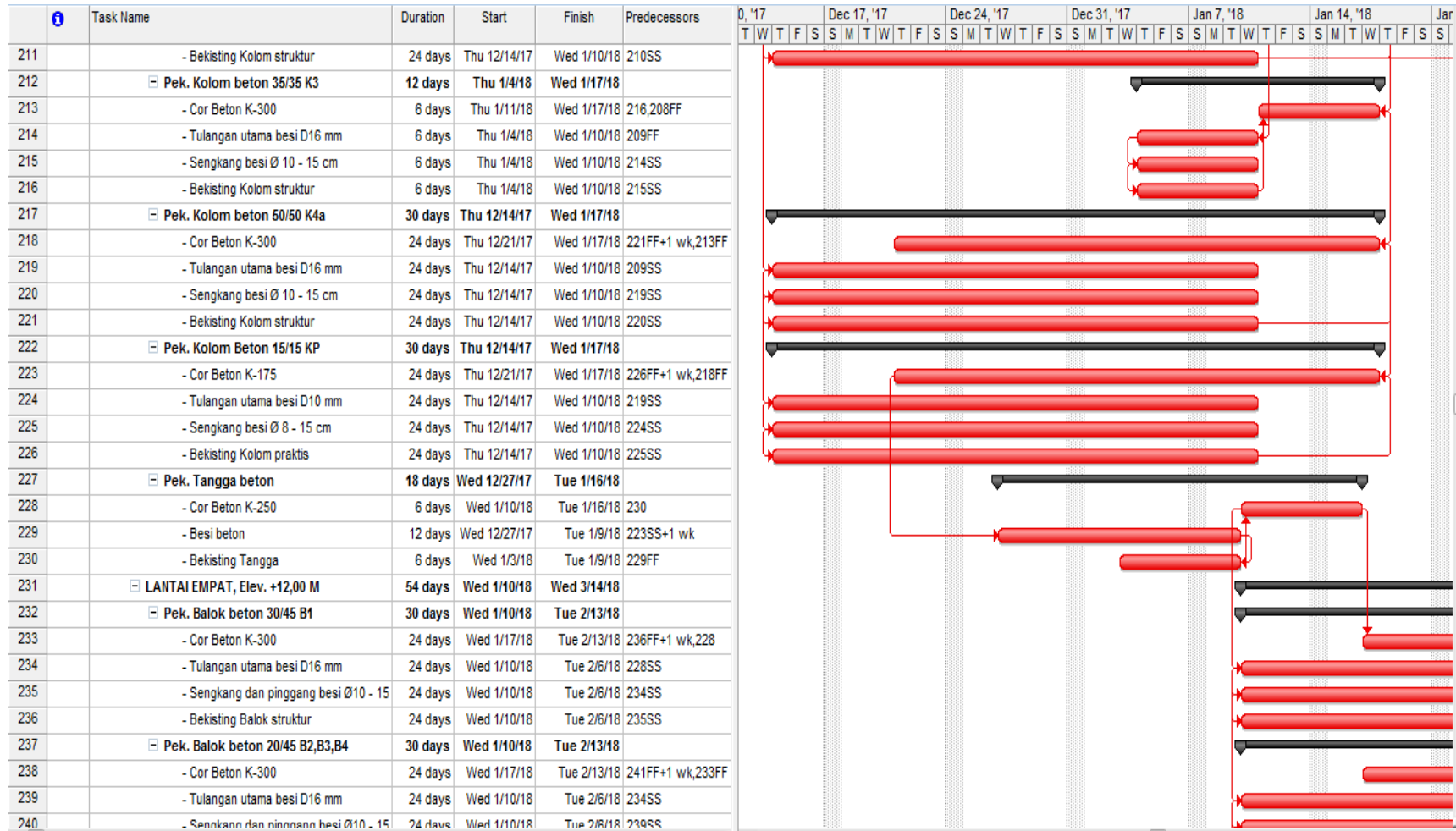
Lanjutan lampiran 3. Diagram pekerjaan



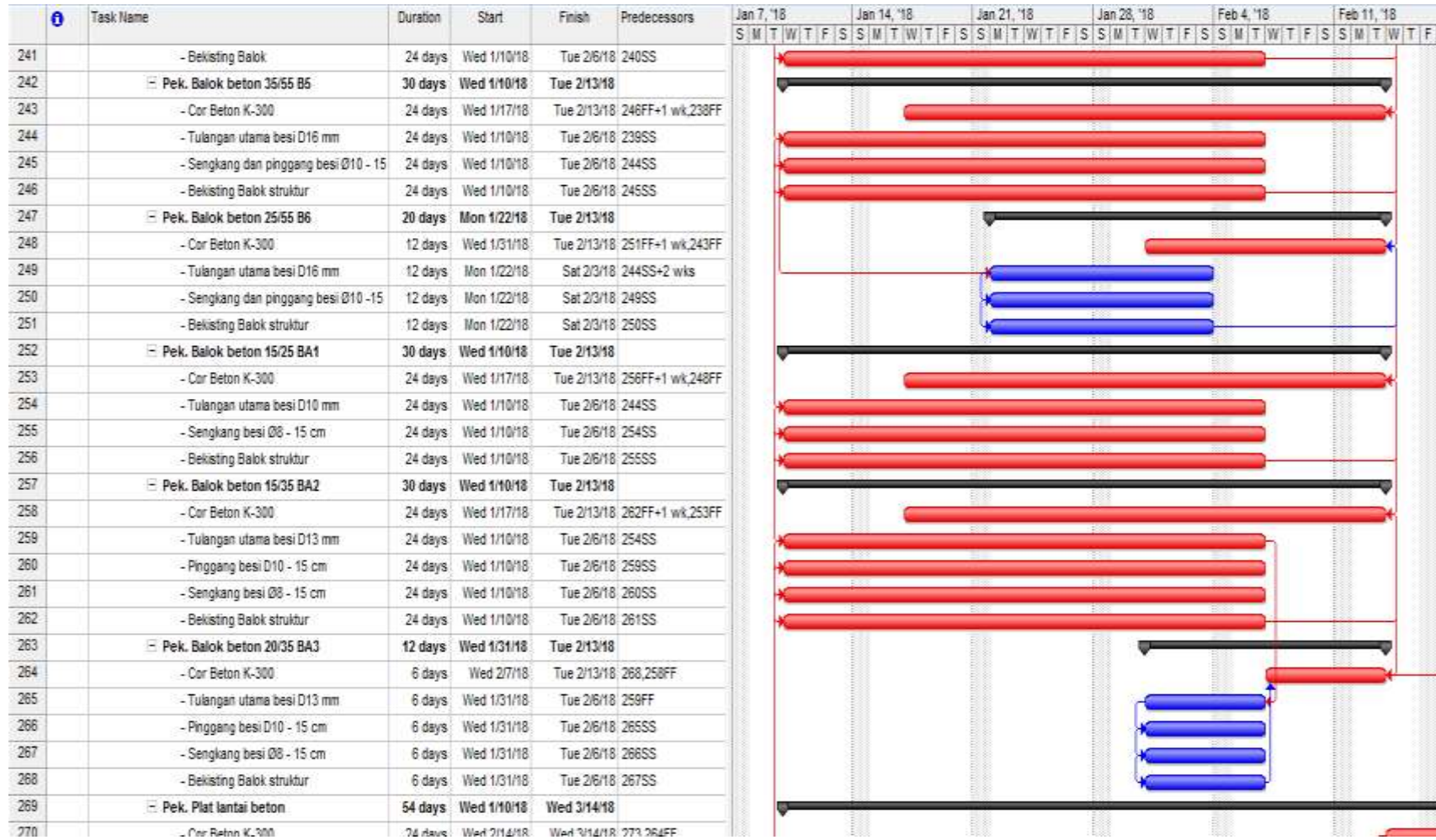
Lanjutan lampiran 3. Diagram pekerjaan



Lanjutan lampiran 3. Diagram pekerjaan



Lanjutan lampiran 3. Diagram pekerjaan



Lanjutan lampiran3.Diagram pekerjaan

i	Task Name	Duration	Start	Finish	Predecessors	Jan 7, '18							Jan 14, '18							Jan 21, '18							Jan 28, '18						
						S	M	T	W	T	F	S	S	M	T	W	T	F	S	S	M	T	W	T	F	S	S	M	T	W	T	F	S
271	- Tulangan utama besi Ø10 mm - 15 cm	30 days	Wed 1/10/18	Tue 2/13/18	259SS																												
272	- Tulangan utama besi Ø8 mm - 15 cm	30 days	Wed 1/10/18	Tue 2/13/18	271SS																												
273	- Bekisting Plat Lantai	30 days	Wed 1/10/18	Tue 2/13/18	272SS																												
274	▣ Pek. beton rumah lift	24 days	Wed 2/14/18	Wed 3/14/18																													
275	- Cor Beton K-300	18 days	Thu 2/22/18	Wed 3/14/18	277FF+1 wk,270FF																												
276	- Tulangan besi Ø10 mm	18 days	Wed 2/14/18	Wed 3/7/18	270SS																												
277	- Bekisting rumah lift	18 days	Wed 2/14/18	Wed 3/7/18	276SS																												
278	▣ Pek. Kolom beton 30/80 K1	12 days	Wed 1/10/18	Tue 1/23/18																													
279	- Cor Beton K-300	6 days	Wed 1/10/18	Tue 1/16/18	282FF																												
280	- Tulangan utama besi D16 mm	6 days	Wed 1/10/18	Tue 1/16/18	271SS																												
281	- Sengkang besi Ø 10 - 15 cm	12 days	Wed 1/10/18	Tue 1/23/18	280SS																												
282	- Bekisting Kolom struktur	6 days	Wed 1/10/18	Tue 1/16/18	281SS																												
283	▣ Pek. Kolom beton 30/50 K2	54 days	Wed 1/10/18	Wed 3/14/18																													
284	- Cor Beton K-300	24 days	Wed 2/14/18	Wed 3/14/18	211FF+1 wk,275FF																												
285	- Tulangan utama besi D16 mm	24 days	Wed 1/10/18	Tue 2/6/18	280SS																												
286	- Sengkang besi Ø 10 - 15 cm	24 days	Wed 1/10/18	Tue 2/6/18	285SS																												
287	- Bekisting Kolom struktur	24 days	Wed 1/10/18	Tue 2/6/18	286SS																												
288	▣ Pek. Kolom beton 35/35 K3	36 days	Wed 1/31/18	Wed 3/14/18																													
289	- Cor Beton K-300	6 days	Thu 3/8/18	Wed 3/14/18	292,284FF																												
290	- Tulangan utama besi D16 mm	6 days	Wed 1/31/18	Tue 2/6/18	285FF																												
291	- Sengkang besi Ø 10 - 15 cm	6 days	Wed 1/31/18	Tue 2/6/18	290SS																												
292	- Bekisting Kolom struktur	6 days	Wed 1/31/18	Tue 2/6/18	291SS																												
293	▣ Pek. Kolom beton 50/50 K4a	54 days	Wed 1/10/18	Wed 3/14/18																													
294	- Cor Beton K-300	24 days	Wed 2/14/18	Wed 3/14/18	297FF+1 wk,289FF																												
295	- Tulangan utama besi D16 mm	24 days	Wed 1/10/18	Tue 2/6/18	285SS																												
296	- Sengkang besi Ø 10 - 15 cm	24 days	Wed 1/10/18	Tue 2/6/18	295SS																												
297	- Bekisting Kolom struktur	24 days	Wed 1/10/18	Tue 2/6/18	296SS																												
298	▣ Pek. Kolom Beton 15/15 KP	54 days	Wed 1/10/18	Wed 3/14/18																													
299	- Cor Beton K-175	24 days	Wed 2/14/18	Wed 3/14/18	302FF+1 wk,294FF																												
300	- Tulangan utama besi D10 mm	24 days	Wed 1/10/18	Tue 2/6/18	285SS																												

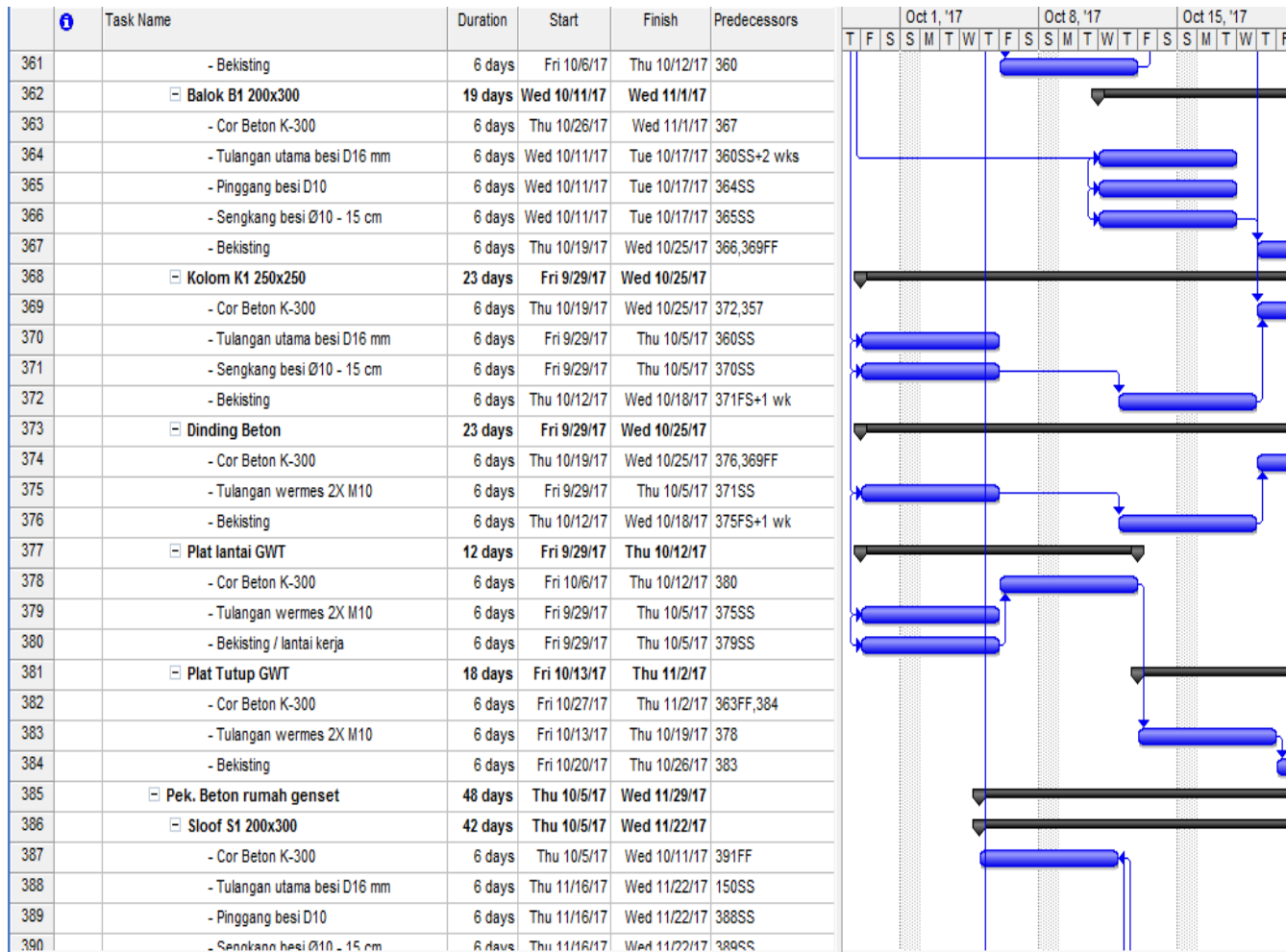
Lanjutan lampiran 3.Diagram pekerjaan

ID	Task Name	Duration	Start	Finish	Predecessors	Feb 18, '18							Feb 25, '18							Mar 4, '18							
						T	F	S	M	T	W	T	F	S	M	T	W	T	F	S	M	T	W	T	F	S	M
301	- Senggang besi Ø 8 - 15 cm	24 days	Wed 1/10/18	Tue 2/6/18	300SS																						
302	- Bekisting Kolom praktis	24 days	Wed 1/10/18	Tue 2/6/18	301SS																						
303	▣ Pek. Tangga beton	18 days	Wed 2/21/18	Tue 3/13/18																							
304	- Cor Beton K-250	6 days	Wed 3/7/18	Tue 3/13/18	306																						
305	- Besi beton	12 days	Wed 2/21/18	Tue 3/6/18	299SS+1 wk																						
306	- Bekisting Tangga	6 days	Wed 2/28/18	Tue 3/6/18	305FF																						
307	▣ LANTAI ATAP, Elev. +12,00 M	28 days	Wed 2/14/18	Tue 3/20/18																							
308	▣ Pek. Balok beton 30/45 B1	23 days	Wed 2/21/18	Tue 3/20/18																							
309	- Cor Beton K-300	18 days	Tue 2/27/18	Tue 3/20/18	312FF+1 wk,304FF																						
310	- Tulangan utama besi D16 mm	18 days	Wed 2/21/18	Tue 3/13/18	305SS																						
311	- Senggang dan pinggang besi Ø10 - 15	18 days	Wed 2/21/18	Tue 3/13/18	310SS																						
312	- Bekisting Balok struktur	18 days	Wed 2/21/18	Tue 3/13/18	311SS																						
313	▣ Pek. Balok beton 20/45 B2,B3,B4	23 days	Wed 2/21/18	Tue 3/20/18																							
314	- Cor Beton K-300	18 days	Tue 2/27/18	Tue 3/20/18	317FF+1 wk,309FF																						
315	- Tulangan utama besi D16 mm	18 days	Wed 2/21/18	Tue 3/13/18	310SS																						
316	- Senggang dan pinggang besi Ø10 - 15	18 days	Wed 2/21/18	Tue 3/13/18	315SS																						
317	- Bekisting Balok	18 days	Wed 2/21/18	Tue 3/13/18	316SS																						
318	▣ Pek. Balok beton 35/55 B5	23 days	Wed 2/21/18	Tue 3/20/18																							
319	- Cor Beton K-300	18 days	Tue 2/27/18	Tue 3/20/18	322FF+1 wk,314FF																						
320	- Tulangan utama besi D16 mm	18 days	Wed 2/21/18	Tue 3/13/18	315SS																						
321	- Senggang dan pinggang besi Ø10 - 15	18 days	Wed 2/21/18	Tue 3/13/18	320SS																						
322	- Bekisting Balok struktur	18 days	Wed 2/21/18	Tue 3/13/18	321SS																						
323	▣ Pek. Balok beton 25/55 B6	13 days	Mon 3/5/18	Tue 3/20/18																							
324	- Cor Beton K-300	6 days	Tue 3/13/18	Tue 3/20/18	327,319FF																						
325	- Tulangan utama besi D16 mm	6 days	Mon 3/5/18	Sat 3/10/18	319SS+1 wk																						
326	- Senggang dan pinggang besi Ø10 - 15	6 days	Mon 3/5/18	Sat 3/10/18	325SS																						
327	- Bekisting Balok struktur	6 days	Mon 3/5/18	Sat 3/10/18	326SS																						
328	▣ Pek. Balok beton 15/25 BA1	23 days	Wed 2/21/18	Tue 3/20/18																							
329	- Cor Beton K-300	18 days	Tue 2/27/18	Tue 3/20/18	332FF+1 wk,324FF																						
330	- Tulangan utama besi D10 mm	18 days	Wed 2/21/18	Tue 3/13/18	320SS																						

Lanjutan lampiran 3. Diagram pekerjaan

ID	Task Name	Duration	Start	Finish	Predecessors	Feb 18, '18							Feb 25, '18							Mar 4, '18							
						T	F	S	M	T	W	T	F	S	M	T	W	T	F	S	M	T	W	T	F	S	M
331	- Senggang besi Ø8 - 15 cm	18 days	Wed 2/21/18	Tue 3/13/18	330SS																						
332	- Bekisting Balok struktur	18 days	Wed 2/21/18	Tue 3/13/18	331SS																						
333	▢ Pek. Balok beton 15/35 BA2	23 days	Wed 2/21/18	Tue 3/20/18																							
334	- Cor Beton K-300	18 days	Tue 2/27/18	Tue 3/20/18	338FF+1 wk,329FF																						
335	- Tulangan utama besi D13 mm	18 days	Wed 2/21/18	Tue 3/13/18	330SS																						
336	- Pinggang besi D10 - 15 cm	18 days	Wed 2/21/18	Tue 3/13/18	335SS																						
337	- Senggang besi Ø8 - 15 cm	18 days	Wed 2/21/18	Tue 3/13/18	336SS																						
338	- Bekisting Balok struktur	18 days	Wed 2/21/18	Tue 3/13/18	337SS																						
339	▢ Pek. Balok beton 20/35 BA3	18 days	Tue 2/27/18	Tue 3/20/18																							
340	- Cor Beton K-300	6 days	Tue 3/13/18	Tue 3/20/18	344,334FF																						
341	- Tulangan utama besi D13 mm	6 days	Tue 2/27/18	Mon 3/5/18	335SS+1 wk																						
342	- Pinggang besi D10 - 15 cm	6 days	Tue 2/27/18	Mon 3/5/18	341SS																						
343	- Senggang besi Ø8 - 15 cm	6 days	Tue 2/27/18	Mon 3/5/18	342SS																						
344	- Bekisting Balok struktur	6 days	Tue 2/27/18	Mon 3/5/18	343SS																						
345	▢ Pek. Plat Atap beton tbl. 10 cm	28 days	Wed 2/14/18	Tue 3/20/18																							
346	- Cor Beton K-250	18 days	Wed 2/14/18	Wed 3/7/18	338SS-1 wk																						
347	- Tulangan utama besi Ø10 mm - 15 cm	18 days	Tue 2/27/18	Tue 3/20/18	334SS																						
348	- Tulangan utama besi Ø8 mm - 15 cm	18 days	Tue 2/27/18	Tue 3/20/18	347SS																						
349	- Bekisting Plat Lantai	18 days	Tue 2/27/18	Tue 3/20/18	348SS																						
350	Waterproofing membrane	18 days	Tue 2/27/18	Tue 3/20/18	349SS																						
351	Screeding	18 days	Tue 2/27/18	Tue 3/20/18	350SS																						
352	Pas. Roofdrain besi	18 days	Tue 2/27/18	Tue 3/20/18	351SS																						
353	Talang tegak PVC dia. 3"Rp. Assesories	18 days	Tue 2/27/18	Tue 3/20/18	352SS																						
354	Assesories pemipaan	18 days	Tue 2/27/18	Tue 3/20/18	353SS																						
355	▢ Pek. Beton GWT	30 days	Fri 9/29/17	Thu 11/2/17																							
356	▢ Sloof S1 200x300	12 days	Fri 9/29/17	Thu 10/12/17																							
357	- Cor Beton K-300	6 days	Fri 10/6/17	Thu 10/12/17	361FF																						
358	- Tulangan utama besi D16 mm	6 days	Fri 9/29/17	Thu 10/5/17	28SS																						
359	- Pinggang besi D10	6 days	Fri 9/29/17	Thu 10/5/17	358SS																						
360	- Senggang besi Ø10 - 15 cm	6 days	Fri 9/29/17	Thu 10/5/17	359SS																						

Lanjutan lampiran 3.Diagram pekerjaan



Lanjutan lampiran 3. Diagram pekerjaan

Task ID	Task Name	Duration	Start	Finish	Predecessors	b 18, '18							Feb 25, '18							Mar 4, '18							Mar 11, '18						
						M	T	W	T	F	S	S	M	T	W	T	F	S	S	M	T	W	T	F	S	S	M	T	W	T	F	S	
406	- Bekisting / lantai kerja	6 days	Thu 11/16/17	Wed 11/22/17	405SS																												
407	Plat Atap R. Genset	14 days	Wed 11/1/17	Thu 11/16/17																													
408	- Cor Beton K-300	6 days	Fri 11/10/17	Thu 11/16/17	410																												
409	- Tulangan wermes 2X M10	6 days	Wed 11/1/17	Tue 11/7/17	393																												
410	- Bekisting	8 days	Wed 11/1/17	Thu 11/9/17	409SS																												
411	Pek. Pondasi footplate	12 days	Thu 11/16/17	Wed 11/29/17																													
412	- Cor Beton K-300	6 days	Thu 11/23/17	Wed 11/29/17	415																												
413	- Tulangan Utama besi D 10	12 days	Thu 11/16/17	Wed 11/29/17	78SS																												
414	- Urugan pasir bawah pondasi tbl. 10 cr	6 days	Thu 11/16/17	Wed 11/22/17	413SS																												
415	- Lantai kerja ad. 1:3:5	6 days	Thu 11/16/17	Wed 11/22/17	414SS																												
416	Pek. Pondasi trapesium	12 days	Thu 11/16/17	Wed 11/29/17																													
417	- Cor Beton K-300	6 days	Thu 11/23/17	Wed 11/29/17	422,412FF																												
418	- Tulangan Utama besi D 10	12 days	Thu 11/16/17	Wed 11/29/17	413SS																												
419	- Urugan pasir bawah pondasi tbl. 10 cr	6 days	Thu 11/16/17	Wed 11/22/17	418SS																												
420	- Lantai kerja ad. 1:3:5	6 days	Thu 11/16/17	Wed 11/22/17	419SS																												
421	Pek. Pondasi batu belah 1:5	6 days	Thu 11/16/17	Wed 11/22/17	420SS																												
422	Pek. Aanstamping pondasi batu belah	6 days	Thu 11/16/17	Wed 11/22/17	421SS																												
423	PEKERJAAN STRUKTUR ATAP	12 days	Thu 2/22/18	Wed 3/7/18																													
424	Pek. Rangka atap baja ringan Zinc alume, benta	12 days	Thu 2/22/18	Wed 3/7/18	346FF																												
425	Pas. Aluminium foil single side	9 days	Mon 2/26/18	Wed 3/7/18	424FF																												
426	Pek. Penutup atap genteng keramik M-class	9 days	Mon 2/26/18	Wed 3/7/18	425FF																												
427	Pek. Genteng bubung/nok	3 days	Mon 3/5/18	Wed 3/7/18	426FF																												
428	Pas. Talang miring	9 days	Mon 2/26/18	Wed 3/7/18	427FF																												
429	Pas. Listplank woodplank 20 cm, t. 8 mm + dud	9 days	Mon 2/26/18	Wed 3/7/18	428FF																												

