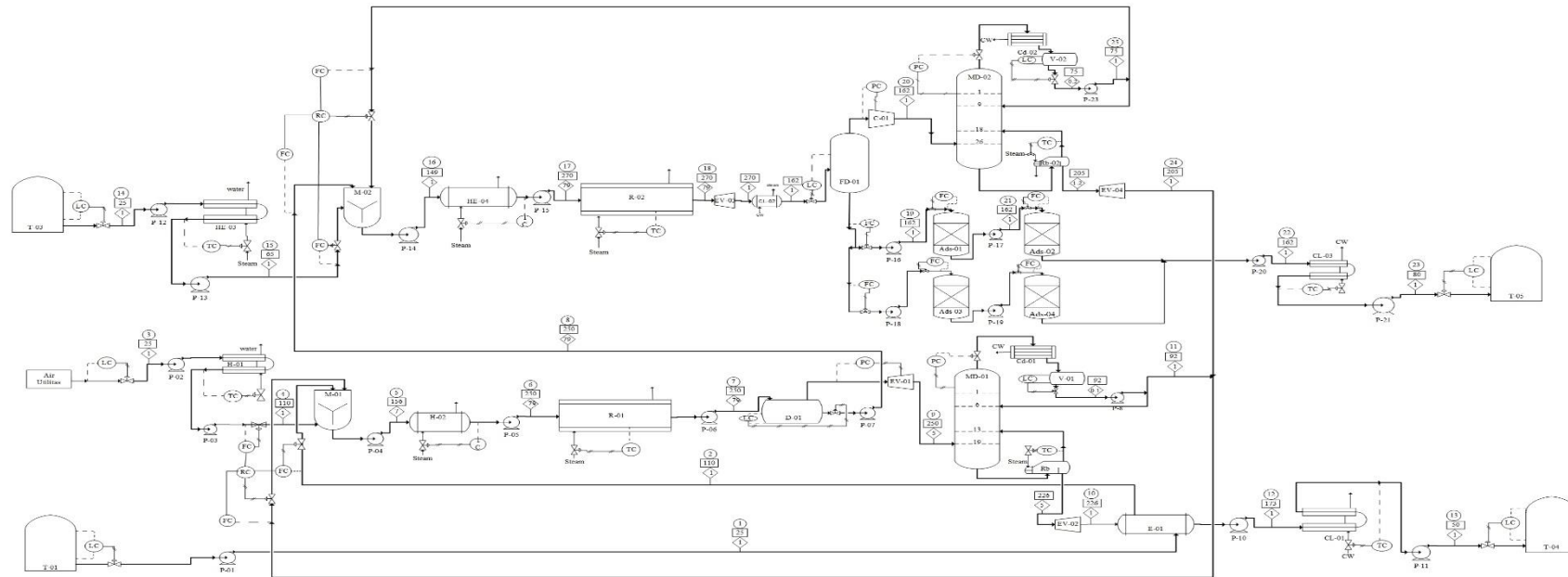


Lampiran 2 PROCESS ENGINEERING FLOW DIAGRAM

PROCESS ENGINEERING FLOW DIAGRAM
 PERANCANGAN PABRIK BIODIESEL MINYAK JELANTAH DENGAN PROSES DUA TAHAP ESTERIFIKASI METANOL SUPERKRITIS
 KAPASITAS PRODUKSI 250.000 TON/TAHUN



No	Komponen	Satuan	1	2	3	4	5	6	7	8	9	10	11	12	13	14	15	16	17	18	19	20	21	22	23	24	25
1	Triolein	kg/jam	28557.214	28557.214			28557.214	28557.214	428.358	426.216	2.142	2.142		2.142	2.142			426.216	426.216	426.216	426.216		426.216	426.216	426.216		
2	Asam Oleat	kg/jam	3172.610	3172.610			3173.024	3173.024	30093.146	30063.053	30.093	30.093		30.093	30.093			30063.053	30063.053	1503.153	1502.676	0.419	1502.676	1502.676	1502.676	0.419	
3	Glisserol	kg/jam				5.995	5.995	2931.630	28.144	2903.486	2897.679	5.807	2897.679	2897.679				28.144	28.144	28.144	27.954	0.189	27.954	27.954	27.954	0.187	
4	Air	kg/jam		198.611	15667.661	15667.661	13950.758	558.030	13392.728	0.013	13397.717	0.013	0.013	575.075	575.075	1133.370	1133.370	2956.866	301.447	2646.667					2646.402	0.265	
5	Methanol	kg/jam			34.134	34.134	34.134	0.034	34.099		27.877			5676.467	5676.467	68204.770	68204.770	64962.873	2394.057	62568.648			2394.057			6.257	62562.391
6	FAME	kg/jam			29.670	29.239	29.239	29.209	0.029	1.247			1.247			29.209	29.209	30007.936	29978.266	29.670	29978.266			29978.266	29978.266	29.670	
	Total Airs (kg/jam)		31729.824	31729.824	198.611	198.611	47467.699	47467.699	47467.699	31105.118	16362.581	2931.174	13431.401	2931.174	2931.174	6217.454	6217.454	99885.193	99885.193	99885.193	34616.556	65245.593	34329.153	31935.096	31935.096	2682.938	62562.656

SYMBOL	KETERANGAN	KODE-RAT	KETERANGAN
LC	Level Control	T	Thick
TC	Temperature Control	E	Heat Exchanger
FC	Flow Control	M	Misc.
PC	Pressure Control	H	Heater
RC	Ratio Control	R	Reaktor Alir Pjwa
□	Steam Arus	D	Decanter
○	Steam/CO	P	Pompa
∇	Valve (air)	C	Compressor
---	Electric Connection	EV	Expander Valve
---	Flange	MD	Meter Distilasi
---	Libra	RB	Reaktor
---	Libra Timb	CD	Condenser
---	Control Valve	V	Accumulator
		CO	Cooler
		FD	Flashed Separator



JURUSAN TEKNIK KIMIA
 FAKULTAS TEKNOLOGI INDUSTRI
 UNIVERSITAS ISLAM INDONESIA
 YOGYAKARTA
 2018

PROCESS ENGINEERING FLOW DIAGRAM
 PERANCANGAN PABRIK BIODIESEL MINYAK JELANTAH DENGAN
 PROSES DUA TAHAP ESTERIFIKASI METANOL SUPERKRITIS DENGAN
 KAPASITAS 250.000 TON/TAHUN

DISUSUN OLEH:
 1. AGIL RINEKSO JATI 14521301
 2. GITA SEPTIYANTI 14521312

DOSIS PEMBIMBING:
 1. Ir. Drs. FAHRI, E. M., M. T., Ph. D
 2. Dr. IFA PUSPASARI, S. T., M. Eng