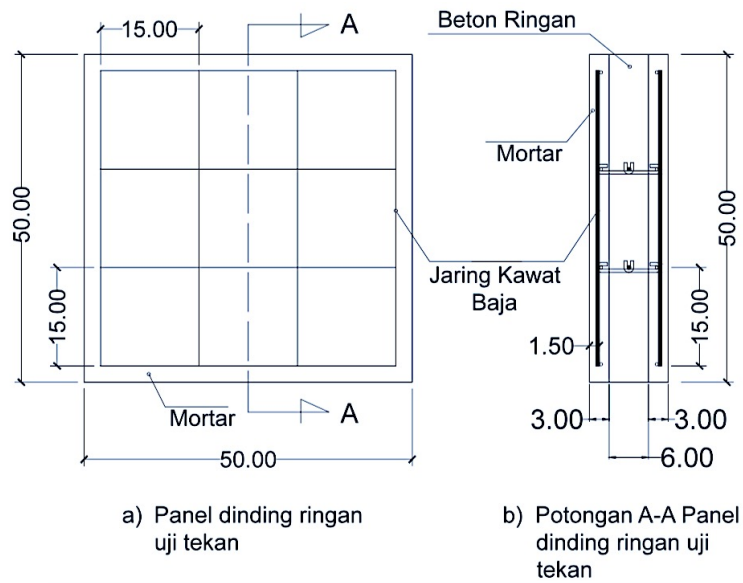
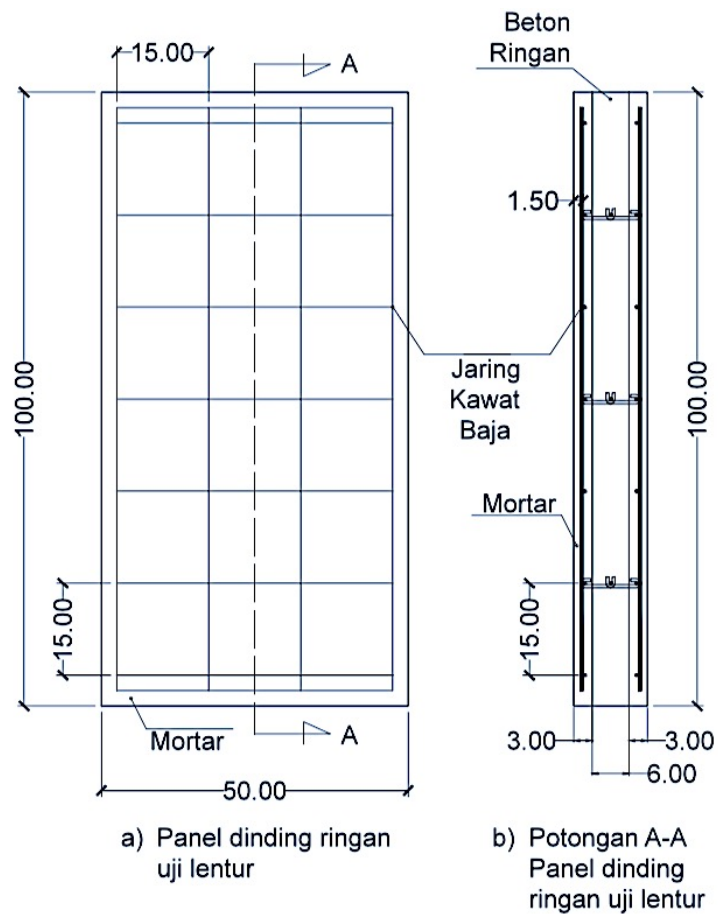


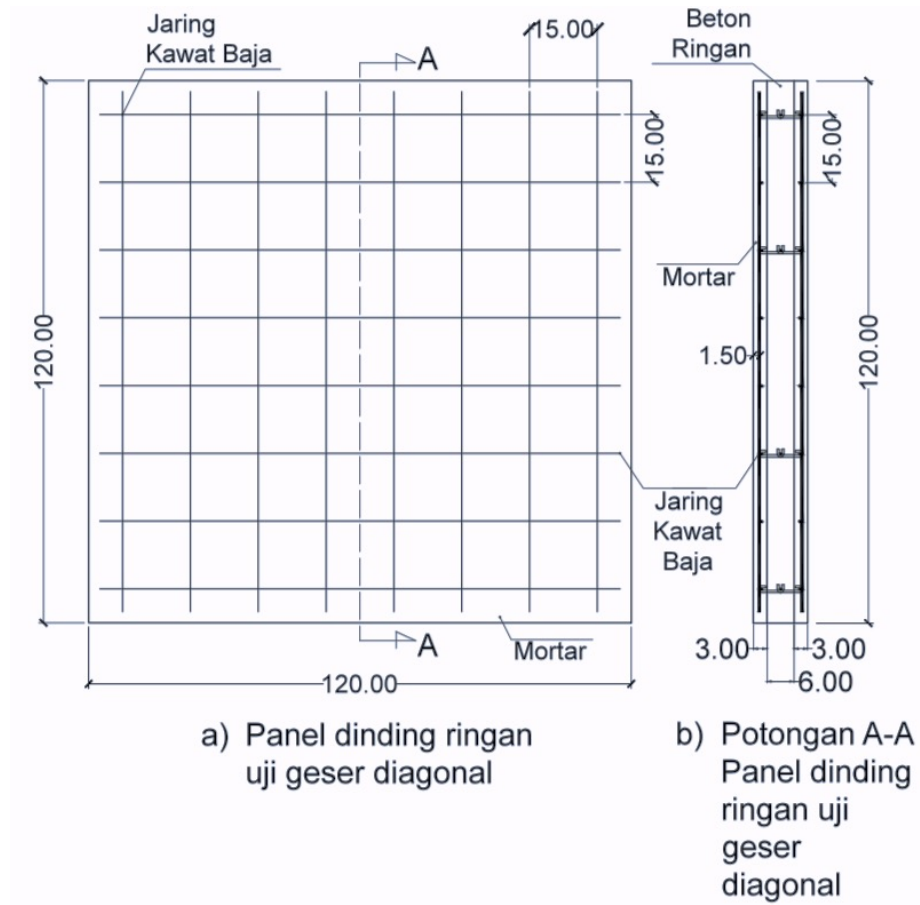
LAMPIRAN 1



Lampiran L-1. 1 Desain panel dinding tipikal 1 (Uji Tekan)



Lampiran L-1. 2 Desain panel dinding tipikal 2 (Uji lentur)



Lampiran L-1. 3 Desain panel dinding tipikal 3 (Uji geser diagonal)



Lampiran L-1. 4 Pemasangan *wire mesh* sebelum pengecoran lapisan kulit (*skin*) panel dinding benda uji tipikal 1 (Uji tekan)



Lampiran L-1. 5 Proses pengecoran lapisan kulit (*skin*) panel dinding benda uji tipikal 1 (Uji tekan)



Lampiran L-1. 6 Proses pengecoran lapisan kulit (*skin*) panel dinding benda uji tipikal 2 (Uji lentur)



Lampiran L-1. 7 Persiapan pengecoran lapisan inti (*core*) benda uji panel dinding tipikal 1 (Uji tekan)



Lampiran L-1. 8 Proses pembuatan busa (*foam*)



Lampiran L-1. 9 Proses penambahan busa (*foam*) ke dalam campuran mortar



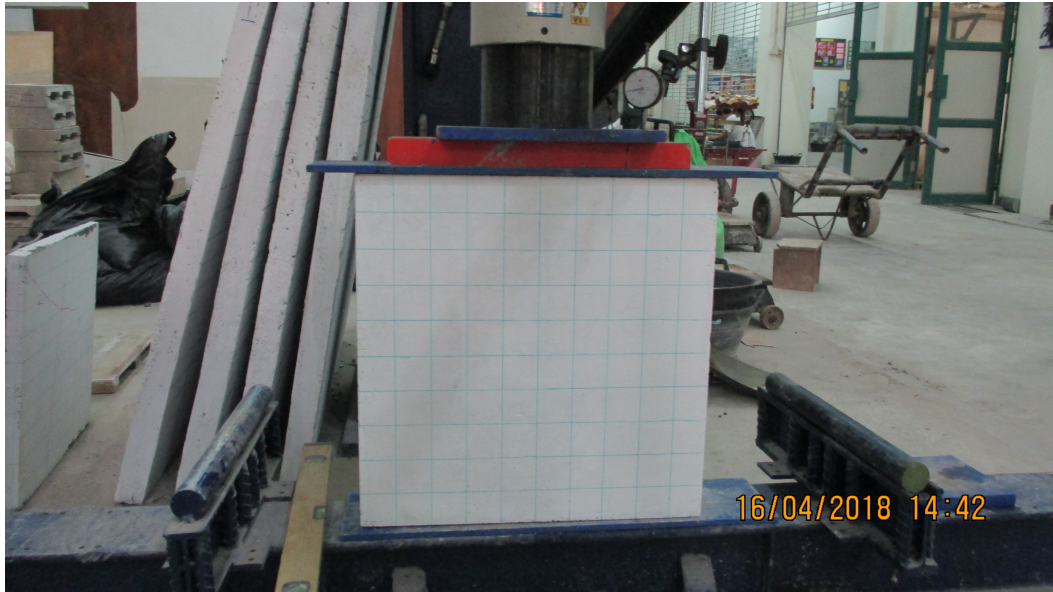
Lampiran L-1. 10 Beton busa (*foam*) hasil penambahan busa (*foam*) ke dalam campuran mortar



Lampiran L-1. 11 Proses pengecoran lapisan inti (*core*) panel dinding benda uji tipikal 1 (Uji tekan)



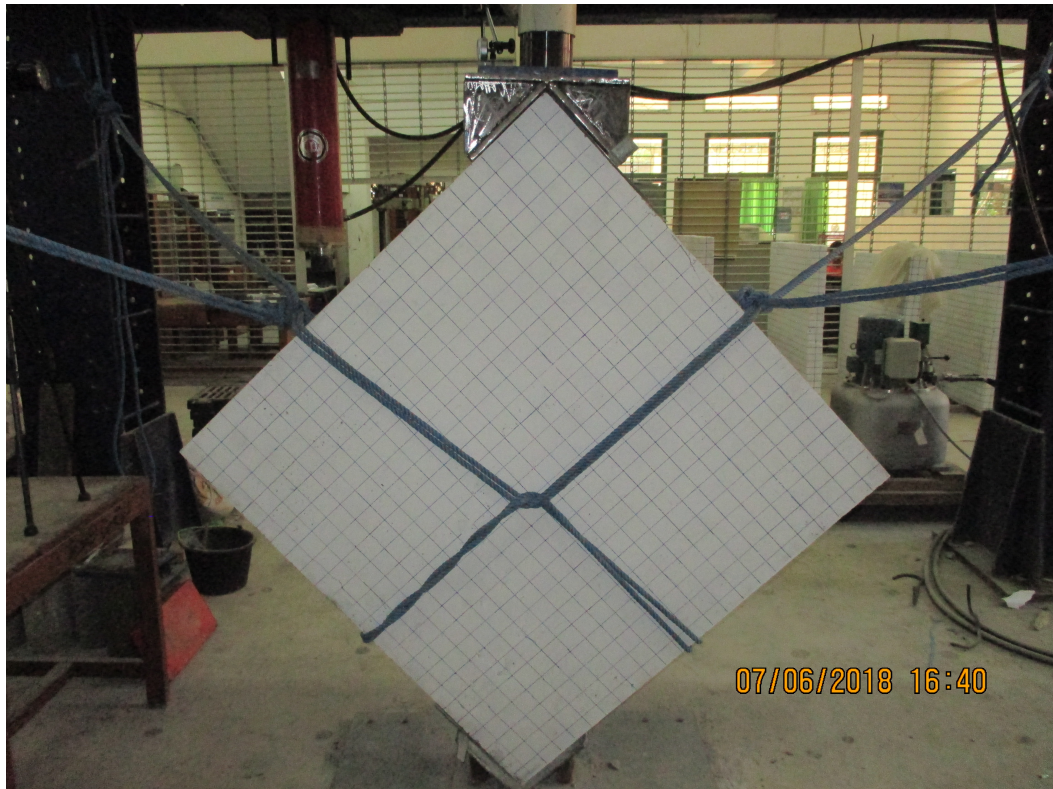
Lampiran L-1. 12 Hasil pengecoran lapisan inti (*core*) panel dinding benda uji tipikal 1 (Uji tekan)



Lampiran L-1. 13 Proses pengujian tekan panel dinding tipikal 1



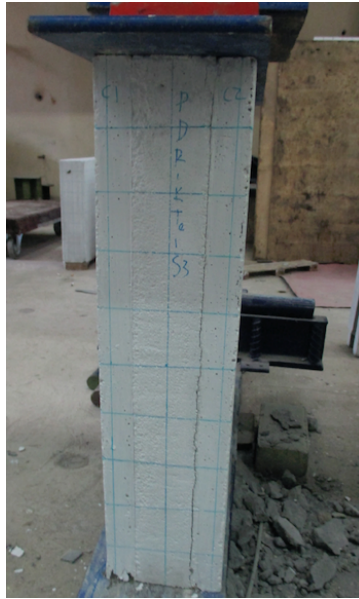
Lampiran L-1. 14 Proses pengujian lentur panel dinding tipikal 2



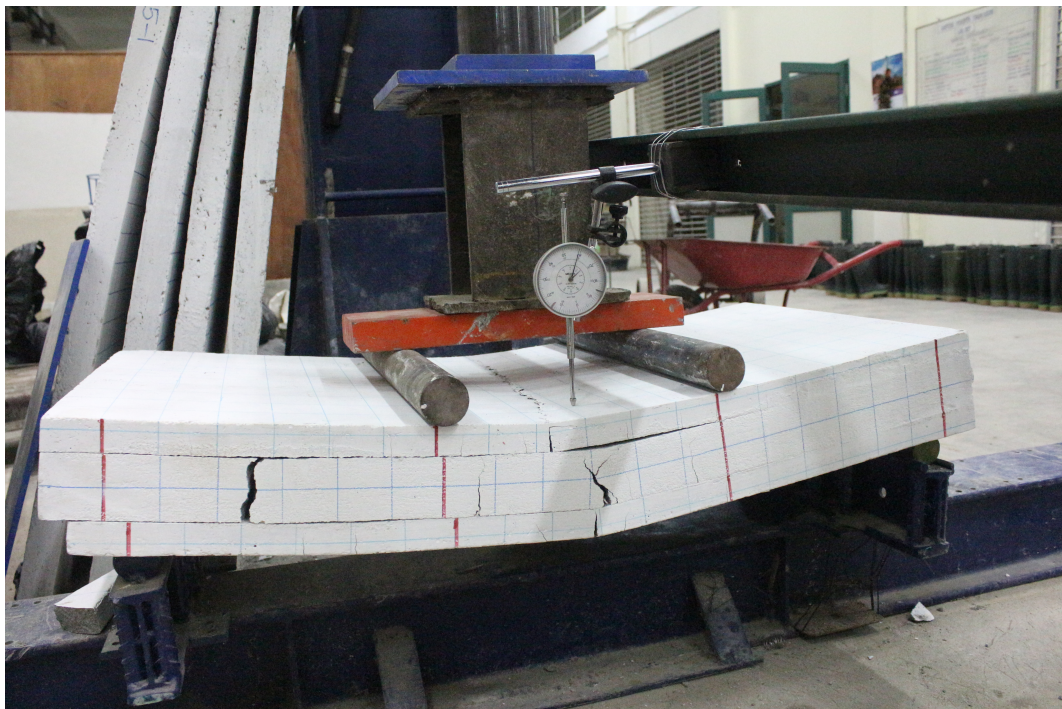
Lampiran L-1. 15 Proses pengujian geser diagonal panel dinding tipikal 3



Lampiran L-1. 16 Benda uji tipikal 1 pasca pengujian



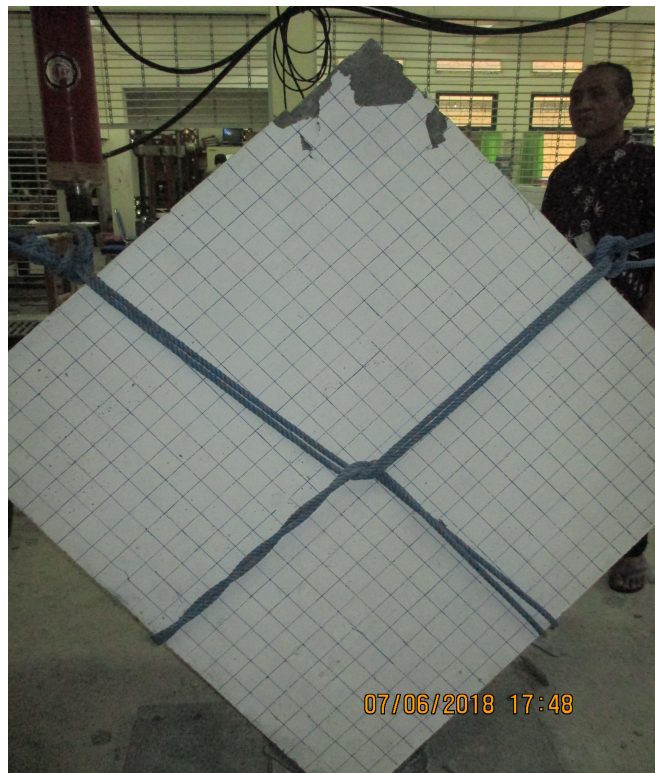
Lampiran L-1. 17 Benda uji tipikal 1 pasca pengujian (Mode kerusakan)



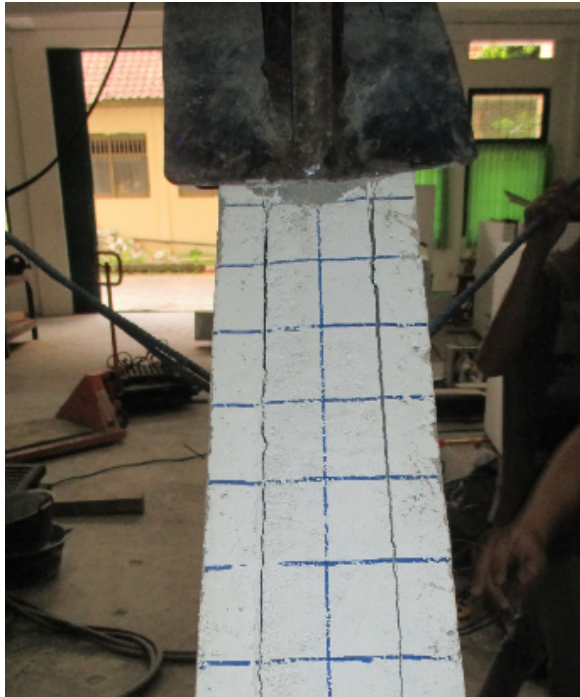
Lampiran L-1. 18 Benda uji tipikal 2 pasca pengujian



Lampiran L-1. 19 Kegagalan pada tumpuan bagian atas (Sepatu uji geser)



Lampiran L-1. 20 Benda uji tipikal 3 pasca pengujian



Lampiran L-1. 21 Kegagalan antar lapisan panel dinding pada uji geser diagonal