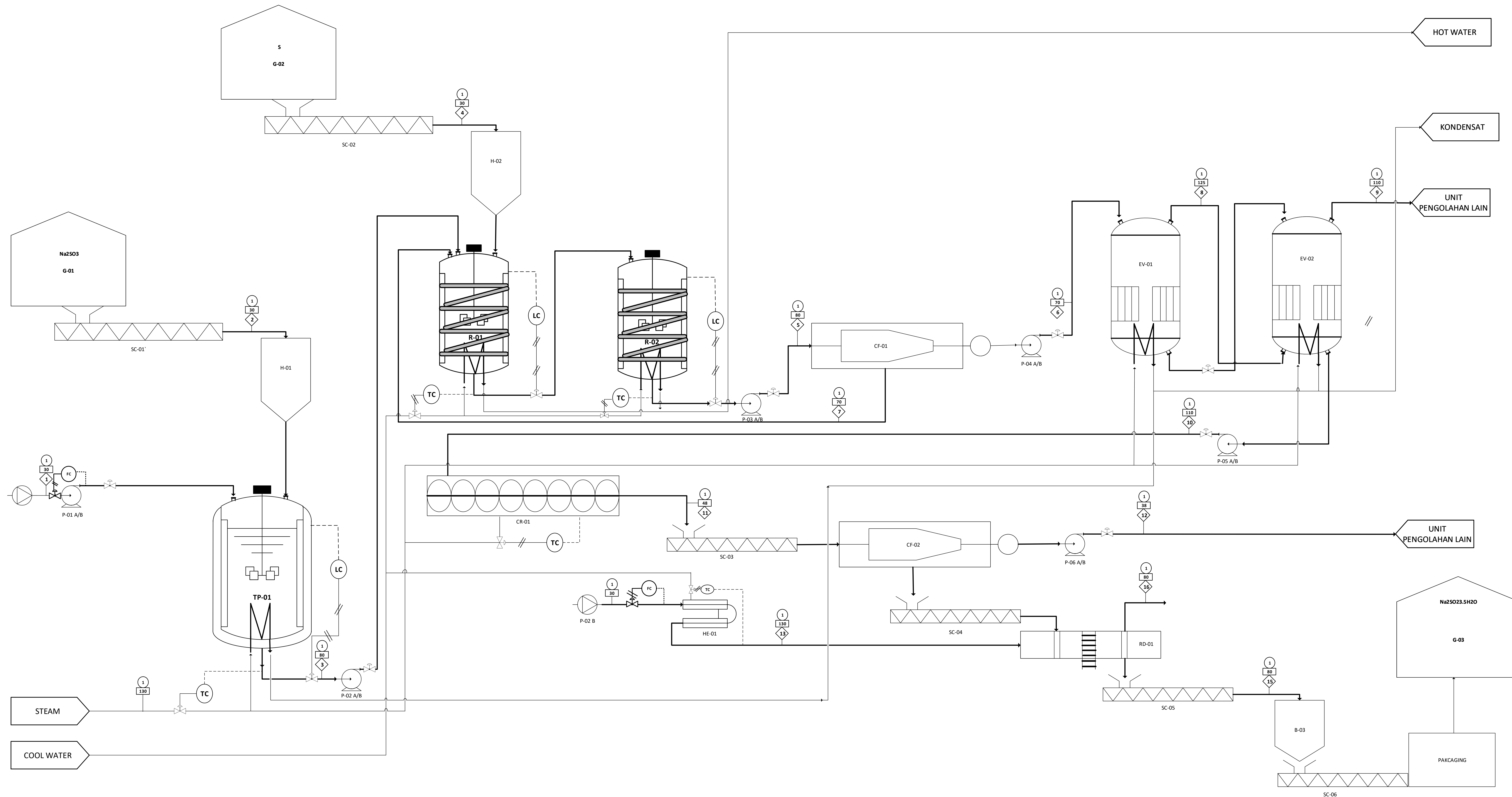


# PROCESS ENGINEERING FLOW DIAGRAM

## PRA RANCANGAN PABRIK KIMIA *SODIUM THIOSULFATE PENTA HYDRATE* DENGAN KAPASITAS 40.000 TON/TAHUN




Komposisi	Nomor Arus (Kg/Jam)															
	1	2	3	4	5	6	7	8	9	10	11	12	13	14	15	16
Na <sub>2</sub> SO <sub>3</sub>		2.591,938	2.591,938		25,925	25,925	0,519			25,406	25,406	24,897		0,508	0,508	
S				651,818	1.981,789		1.981,788									
Ash				0,0001	0,793		0,793									
H <sub>2</sub> O	7.982,264	26,181	8.008,823	0,130	8.172,402	8.172,402	163,448	2.944,396	5.888,793	2.120,160	225,455	220,946		4,509		4,509
Na <sub>2</sub> S <sub>2</sub> O <sub>3</sub>					3.284,030	3.284,030	65,680			3.218,349	64,367	63,079		1,287	1,287	
Na <sub>2</sub> S <sub>2</sub> O <sub>3</sub> .5H <sub>2</sub> O											5.048,686			5.048,686	5048,686	
Udara Panas																37,798
Udara Kering																37,798

DAFTAR ALAT	
TP	Tangki Pelarut
CF	Centrifuge
R	Reaktor
EV	Evaporator
CR	Crystallizer
RD	Rotary Dryer
P	Pompa
SC	Screw Conveyor
H	Hopper
HE	Heat Exchanger
B	Bin

KETERANGAN INSTRUMEN	
FC	Flow Control
LC	Level Control
TC	Temperatur Control
WC	Weight Control

KETERANGAN SIMBOL	
◇	: Nomor arus
○	: Tekanan, atm
□	: Suhu, °C
⋈	: Control Valve
—	: Arus Sinyal Pneumatic
—	: Arus Sinyal Listrik
→	: Arus Proses



UNIVERSITAS ISLAM SERANG

JURUSAN TEKNIK KIMIA  
FAKULTAS TEKNOLOGI INDUSTRI  
UNIVERSITAS ISLAM INDONESIA

PROCESS ENGINEERING FLOW DIAGRAM  
PRA RANCANGAN PABRIK KIMIA *SODIUM THIOSULFATE PENTA HYDRATE* DENGAN KAPASITAS 40.000 TON/TAHUN

Disusun Oleh :

- Nisa Auliah Sundari (14521213)
- Nurul Fadliyah (14521229)

Dosen Pembimbing :

- Asmanto Subagyo, M.Sc.
- Lucky Wahyu Nuzulia, S.T., M.Eng.