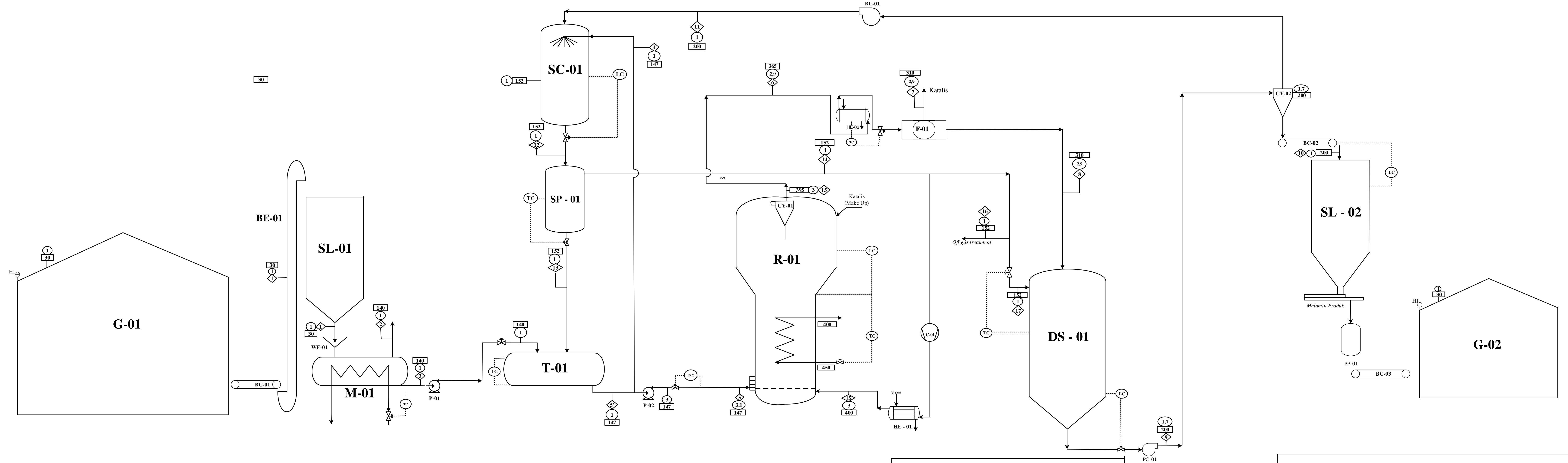


# PRARANCANGAN PABRIK MELAMINE PROSES BASF KAPASITAS 38.000 ton/tahun




KOMPONEN	Arus 1	Arus 2	Arus 3	Arus 4	Arus 5'	Arus 5	Arus 6	Arus 7	Arus 8	Arus 9	Arus 10	Arus 11	Arus 12	Arus 13	Arus 14	Arus 15	Arus 16	Arus 17
Urea	13.695,37	0	13.695,37	758,62	15.172,39	14.413,77	720,72	0	720,72	720,72	2,40	718,40	1.477,02	1.477,02	0	0	0	0
Biuret	2,4	0	2,4	4,12	86,76	82,42	82,42	0	82,42	82,42	2,40	80,02	84,14	84,14	0	0	0	0
Water	18,88	18,88	0	0	0	0	0	0	0	0	0	0	0	0	0	0	0	0
Melamin	0	0	0	58,6	0	0	4.793,18	0	4.793,18	4.793,18	4.793,18	0	0	0	0	0	0	0
Amonia	0	0	0	0	0	0	5.177,11	0	5.177,11	6.471,38	0	6.471,38	6.471,38	0	6.471,38	1.294,28	3.882,83	1.294,28
CO <sub>2</sub>	0	0	0	0	0	0	6.689,12	0	6.689,12	8.361,40	0	8.361,40	8.361,40	0	8.361,40	1.672,28	5.016,84	1.672,28
Katalis	0	0	0	0	0	0	174,45	174,45	0	0	0	0	0	0	0	0	0	0
<b>TOTAL</b>	<b>13.716,65</b>	<b>18,88</b>	<b>13.697,77</b>	<b>762,74</b>	<b>15.259,15</b>	<b>14.496,16</b>	<b>17.637</b>	<b>174,45</b>	<b>17.462,55</b>	<b>20.429,11</b>	<b>4.797,18</b>	<b>15.631,21</b>	<b>29.702,79</b>	<b>1.561,16</b>	<b>14.832,18</b>	<b>2.966,56</b>	<b>8.899,67</b>	<b>2.966,56</b>

**KETERANGAN GAMBAR**

BC-01 : Belt Conveyor bahan baku	M-01 : Meller
BC-02 : Belt conveyor produk	P-01 : Pompa
BC-03 : Belt conveyor produk packaging	P-02 : Pompa
BE-01 : Bucket Elevator	P-03 : Pompa
BL-01 : Blower	PC-01 : Pneumatic Conveyor
C-01 : Compressor	PP-01 : Package Produk
CY-01 : Cyclone reaktor	R-01 : Reaktor
CY-02 : Cyclone off gas	SC-01 : Scrubber
DS-01 : Desublimer	SL-01 : Silo Bahan Baku
F-01 : Filter	SL-02 : Silo Produk
G-01 : Gudang bahan baku	SP-01 : Separator
G-02 : Gudang Produk	T-01 : Tangki
HE-01 : Heater off gas	WF-01 : Weight Feeder
HE-02 : Cooler of gas	WF-02 : Weight Feeder

**KETERANGAN ARUS 5' = 5' + 5"**

SIMBOL	KETERANGAN
□	Temperatur
○	Tekanan
◇	Nomor arus
▽	Human Indicator (HI)
○ with line	Flow Rate Control (FRC)
○ with horizontal line	Level Control (LC)
○ with vertical line	Level Indicator (LI)
○ with diagonal line	Temperature Control (TC)
⊞	Control Valve
⋯	Electric Connection
—	Piping



**JURUSAN TEKNIK KIMIA**  
**FAKULTAS TEKNOLOGI INDUSTRI**  
**UNIVERSITAS ISLAM INDONESIA**  
**YOGYAKARTA**

**PRA RANCANGAN MELAMIN**  
**PROSES BASF (Basic Anilin and Soda Fabric)**  
**KAPASITAS 38.000 TON/TAHUN**

**Di Rancang oleh**

1. Nurul Aisyah	14521084
2. Ikhsan Basliraka	14521314

**Pembimbing**

1. Aris Suhil Arto Kholil Ir., M.M.	
2. Lilis Kristiyani, ST., M.Eng	

