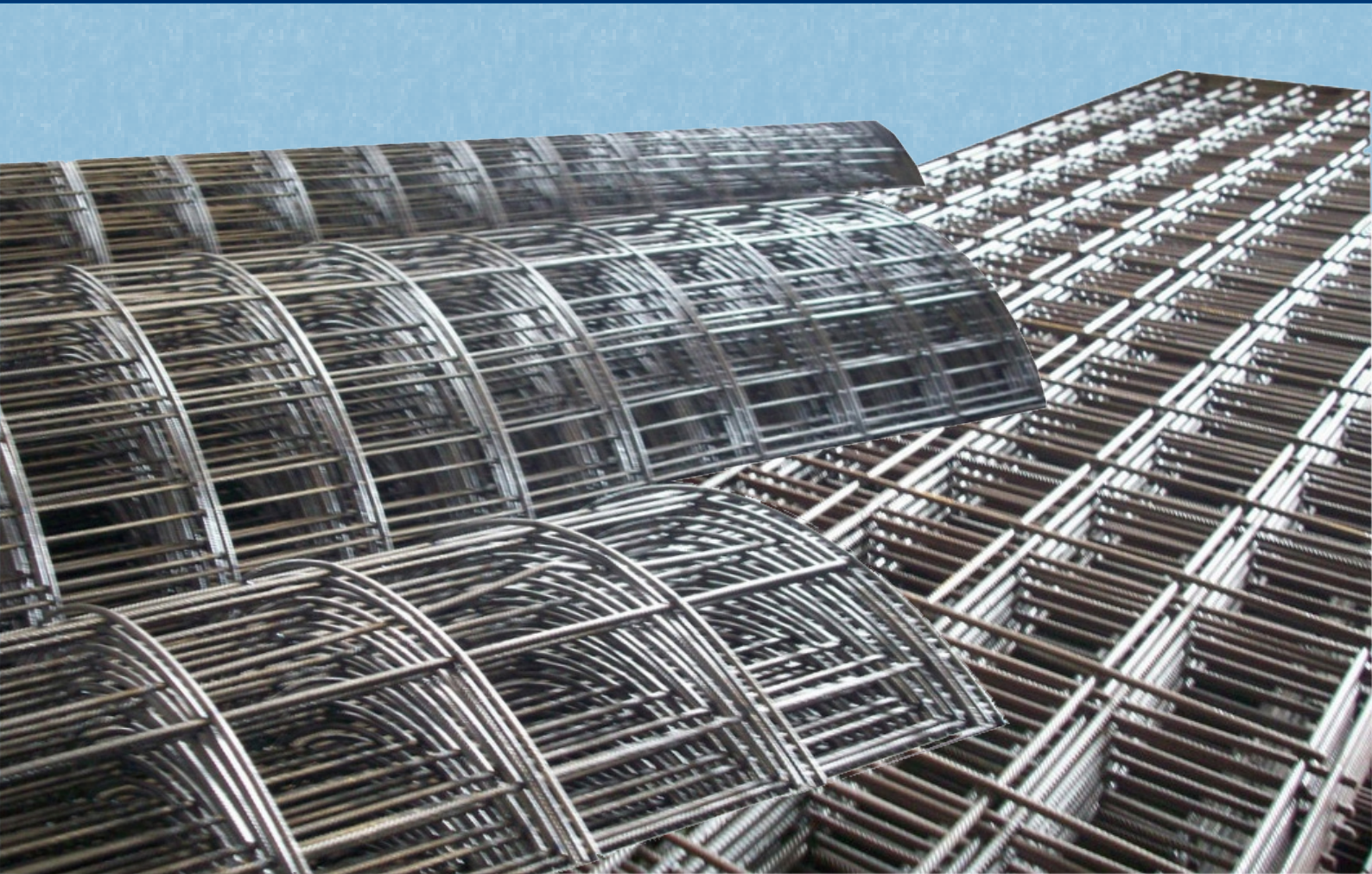


UNION WIRE MESH[®]



1972

PT. UNION METAL

A UNION SAMPOERNA CO.

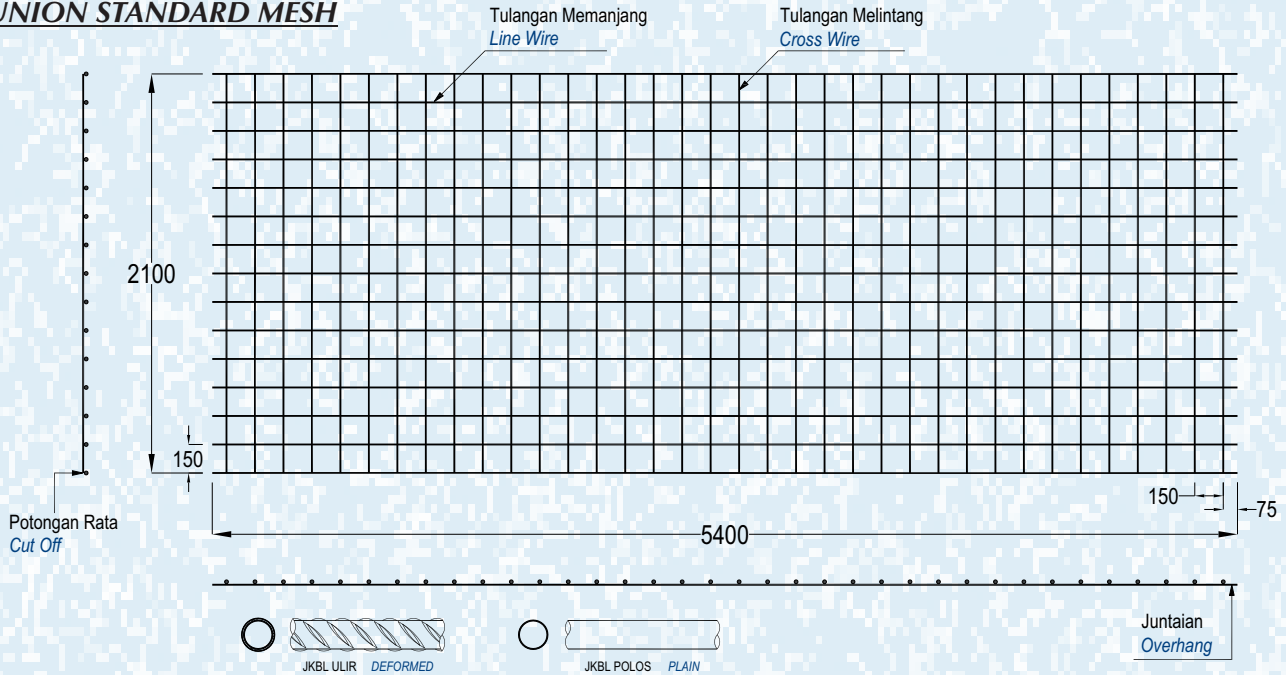
INFORMASI PRODUK

PRODUCT INFORMATION

Union Wire Mesh adalah jaring baja tulangan bermutu tinggi yang mempunyai tegangan leleh karakteristik 5.000 kg/cm² yang dirangkai sedemikian rupa menggunakan las listrik untuk mendapatkan tegangan geser berkualitas tinggi sebesar 2.500 kg/cm² di setiap titik pertemuan kawatnya.

Union Wire Mesh is made from high tensile reinforcing wire rod having characteristic yield strength of 5,000 kg/cm² and it is electrically welded to obtain high quality shearing strength of 2,500 kg/cm² in each welded point.

UNION STANDARD MESH



BERAT PER LEMBAR

RWNC	M4	M5	M6	M7	M8	M9	M10	M12	M16
DIAMETER (mm)	4	5	6	7	8	9	10	12	16
BERAT PER LEMBAR (kg)	15,45	24,14	34,76	47,31	61,79	78,21	96,55	139,03	247,17

MASS PER SHEET

Spesifikasi

Diameter JKBL Union	: 4 mm sampai 16 mm
Standar Bahan	: SNI 07-0663-1995
Tegangan Leleh Karakteristik	: 5.000 kg/cm ² , mutu U-50
Tegangan Geser Kampuh Las	: 2.500 kg/cm ²
Bentuk Permukaan Kawat	: Polos dan Ulir
Spasi Standard	: 150 mm x 150 mm (Type M) 100 mm x 200 mm (Type B)
Ukuran Standard	: Lembar : 5,4 m x 2,1 m (M4 - M10, M12, M16) Roll : 54 m x 2,1 m (M4 - M6)

Specification

Diameter of Union Mesh	: 4 mm up to 16 mm
Material Standard	: SNI 07-0663-1995
Characteristic Yield Strength	: 5,000 kg/cm ² , grade U-50
Welding Shear Strength	: 2,500 kg/cm ²
Types of Bar Surfaces	: Plain and Deformed
Standard Spacings	: 150 mm x 150 mm (M Type) 100 mm x 200 mm (B Type)
Standard Sizes	: Sheet : 5.4 m x 2.1 m (M4 - M10, M12, M16) Roll : 54 m x 2,1 m (M4 - M6)

Produksi Union Wire Mesh

Dengan dukungan dari mesin pembentuk JKBL kami yang modern dan menggunakan teknologi komputer, kami terbukti berkemampuan untuk memproduksi ukuran JKBL yang bervariasi dengan hasil pengelasan sempurna sampai dengan diameter 16 mm.

- Jarak spasi : 50 mm; 100 mm; 150 mm; 200 mm; 250 mm; dan 300 mm
- Juntaian kawat memanjang maksimum 1.200 mm kedua sisi nya
- Jarak spasi kawat melintang minimum 50 mm sesuai dengan diameter
- Jika tulangan ukuran spesial diperlukan, staff berpengalaman kami siap untuk membantu mendesain yang terbaik dan paling efisien
- Untuk M12 sampai dengan M16, harap konsultasi dengan kami

Union Wire Mesh Production

By means of our modern and computerized wire mesh welding machines, we have proven capability to produce various sizes of mesh with perfect welding result up to diameter 16 mm.

- Spacings : 50 mm; 100 mm; 150 mm; 200 mm; 250 mm and 300 mm
- Line wire over hang maximum 1,200 mm both sides
- Cross wire spacing minimum 50 mm subject to diameters
- If special sizes of reinforcement are required, our experienced technical staffs are ready to assist for designing the best and most efficient ones
- For M12 to M16, please consult with us

Penggunaan

1. Lantai beton : pabrik, gudang, gedung bertingkat, parkir, dll
2. Dinding beton : gedung bertingkat, perumahan, penyekat ruangan, dll
3. Jalan beton, konstruksi cakar ayam, landasan pesawat terbang
4. Saluran irigasi, saluran drainase, bronjong
5. Kerangka kolom dan balok praktis untuk perumahan
6. Dinding penahan, dinding pemikul beban di dalam gedung
7. Pagar, teralis, kandang hewan

Applications

1. Concrete floor : factory, warehouse, high rise building, car park, etc
2. Concrete wall : high rise building, houses, room divider, etc
3. Rigid pavement, strip footing construction, landing strip
4. Irrigation and drainage open channels, gabion basket
5. Non structural column and beam reinforcement for houses
6. Retaining wall, structural wall inside the building
7. Fence, railings, cages

PERENCANAAN & DESAIN

PLANNING & DESIGN

Perhitungan Konversi

Mengganti tulangan biasa (U-24)
dengan JKBL Union (U-50)

Rumus :

$$\text{Luas JKBL union (U-50)} = \text{Luas tulangan biasa (U-24)} \times \frac{\text{Tegangan leleh U-24}}{\text{Tegangan leleh U-50}}$$

Contoh :

Diketahui : Tulangan U-24
Diameter = 10 mm
Jarak spasi = 150 mm
Luas tulangan = 5,24 cm²/m'

$$\begin{aligned} \text{Luas JKBL union} &= 5,24 \text{ cm}^2/\text{m}' \times \frac{2.400 \text{ kg/cm}^2}{5.000 \text{ kg/cm}^2} \\ &= 2,515 \text{ cm}^2/\text{m}' \end{aligned}$$

Dari Tabel diperoleh : JKBL Union
Diameter 7 mm dengan spasi 150 mm
Luas 2,57 cm²/m'

Conversion Calculation

Substituting union wire mesh (U-50)
for ordinary reinforcement (U-24)

Formula :

$$\text{Union Wire Mesh area (U-50)} = \text{Mild Steel bar area (U-24)} \times \frac{\text{Yield stress U-24}}{\text{Yield stress U-50}}$$

Example :

Given : Mild Steel bar U-24
Diameter = 10 mm
Spacing = 150 mm
Cross sectional area = 5.24 cm²/m'

$$\begin{aligned} \text{Union Wire Mesh area} &= 5.24 \text{ cm}^2/\text{m}' \times \frac{2.400 \text{ kg/cm}^2}{5.000 \text{ kg/cm}^2} \\ &= 2.515 \text{ cm}^2/\text{m}' \end{aligned}$$

From the Table is obtained : Union Wire Mesh
Diameter 7 mm with 150 mm spacing
Area 2.57 cm²/m'

TABEL LUAS PENAMPANG KAWAT

WIRE AREA TABLE

Diameter Kawat Ø Wire Diameter (mm)	Luas Kawat Ø Wire Area (cm ²)	Jumlah Luas Penampang Kawat (cm ² /m') Menurut Spasinya Setiap Arah Total Wire Area (cm ² /m') According to Spacing Each Direction											
		Spasi / Spacing (mm)											
		50	75	100	125	150	175	200	225	250	275	300	325
4.0	0.126	2.51	1.68	1.26	1.01	0.84	0.72	0.63	0.56	0.50	0.46	0.42	0.39
4.5	0.159	3.18	2.12	1.59	1.27	1.06	0.91	0.80	0.71	0.64	0.58	0.53	0.49
5.0	0.196	3.93	2.62	1.96	1.57	1.31	1.12	0.98	0.87	0.79	0.71	0.65	0.60
5.5	0.238	4.75	3.17	2.38	1.90	1.58	1.36	1.19	1.06	0.95	0.86	0.79	0.73
6.0	0.283	5.65	3.77	2.83	2.26	1.88	1.62	1.41	1.26	1.13	1.03	0.94	0.87
6.5	0.332	6.64	4.42	3.32	2.65	2.21	1.90	1.66	1.47	1.33	1.21	1.11	1.02
7.0	0.385	7.70	5.13	3.85	3.08	2.57	2.20	1.92	1.71	1.54	1.40	1.28	1.18
7.5	0.442	8.84	5.89	4.42	3.53	2.95	2.52	2.21	1.96	1.77	1.61	1.47	1.36
8.0	0.503	10.05	6.70	5.03	4.02	3.35	2.87	2.51	2.23	2.01	1.83	1.68	1.55
8.5	0.567	11.35	7.57	5.67	4.54	3.78	3.24	2.84	2.52	2.27	2.06	1.89	1.75
9.0	0.636	12.72	8.48	6.36	5.09	4.24	3.64	3.18	2.83	2.54	2.31	2.12	1.96
9.5	0.709	14.18	9.45	7.09	5.67	4.73	4.05	3.54	3.15	2.84	2.58	2.36	2.18
10.0	0.785	15.71	10.47	7.85	6.28	5.24	4.49	3.93	3.49	3.14	2.86	2.62	2.42
12.0	1.131	22.62	15.08	11.31	9.05	7.54	6.46	5.65	5.03	4.52	4.11	3.77	3.48
16.0	2.011	40.21	26.81	20.11	16.08	13.40	11.49	10.05	8.94	8.04	7.31	6.70	6.19

PEMASANGAN & KONSTRUKSI

INSTALLATION & CONSTRUCTION

Pemasangan dan penyambungan JKBL Union tidaklah susah, tetapi perlu diperhatikan sambungan minimal, sehingga didapati hasil yang optimal dan benar.

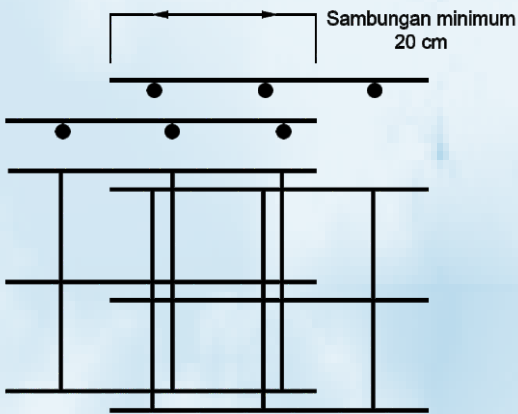
Installation and joint of Union Wire Mesh is easy, just need to pay attention to the minimum overlap in order to get an optimum and good result.

A. Sambungan JKBL Union

1. Sambungan Wire Mesh

Sambungan Wire Mesh minimal 20 cm

Sambungan Wire Mesh

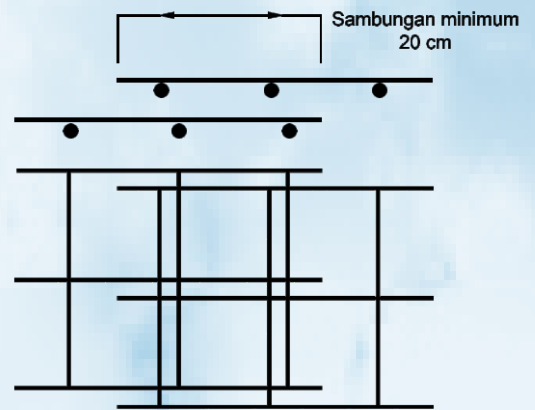


A. Union Wire Mesh Overlap

1. Union Wire Mesh Overlap

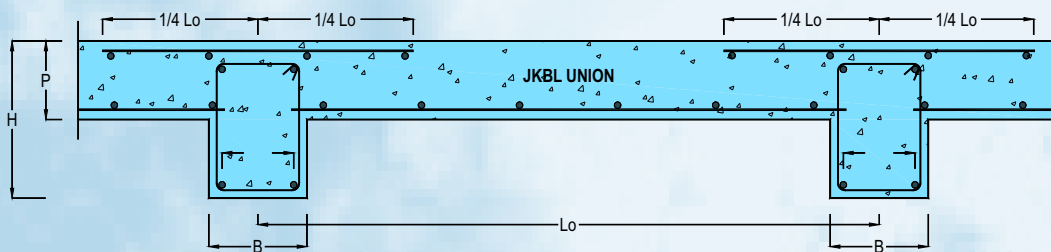
Union Wire Mesh overlap minimum of 20 cm

Wire Mesh Overlap

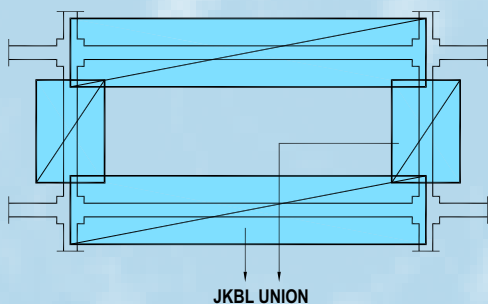


B. Perletakan JKBL Union *Union Wire Mesh Position*

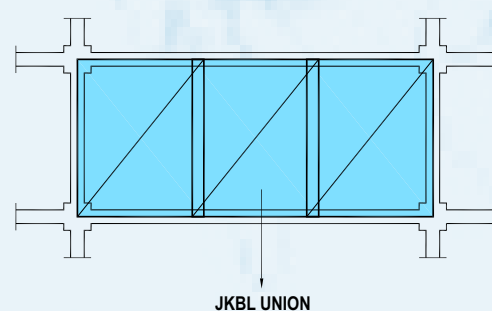
Plat Lantai Bangunan Bertingkat *Suspended Slab*



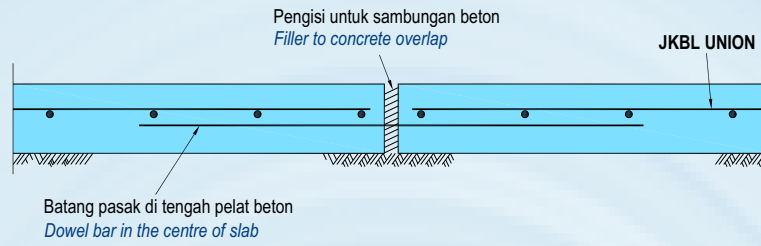
Lapis Atas *Top Layer*



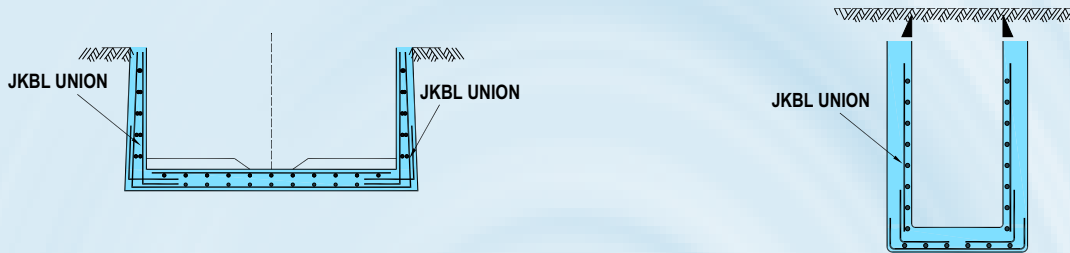
Lapis Bawah *Bottom Layer*



Lantai Beton di Atas Tanah *Concrete Floor on Top Soil*



Saluran Drainase *Drainage Open Channels*



Dinding Penahan & Pondasi *Retaining Wall & Foundation*



KEUNTUNGAN MENGGUNAKAN UNION WIRE MESH

THE ADVANTAGES OF USING UNION WIRE MESH

1. Menghemat waktu konstruksi bangunan
2. Dapat diproduksi atas dasar desain konsultan (Engineering Mesh)
3. Mereduksi berat besi tulangan dalam beton

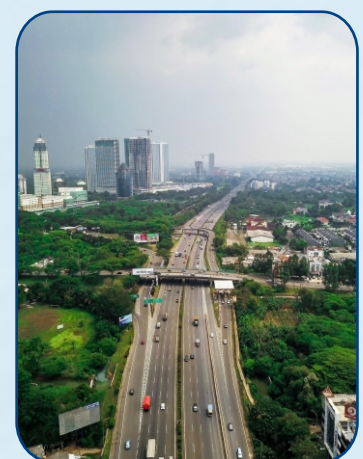
1. Save time for building constructions
2. Can be produced based on consultant's designs (Engineering Mesh)
3. Reducing weight of steel wire in concrete



CIPUTRA WORLD, Surabaya



GRAND INDONESIA, Jakarta



TOL TANGERANG - MERAK



PT. UNION METAL

Quality Steel Building Material

Head Office

: Menara Sudirman Building 16th Floor
Jl. Jend. Sudirman Kav. 60
Jakarta 12190 Indonesia
Phone # (62-21) 522.7707 (hunting)
Fax # (62-21) 522.7718
Email : marketing@unionmetal.co.id
Website : www.unionmetal.co.id

Factory

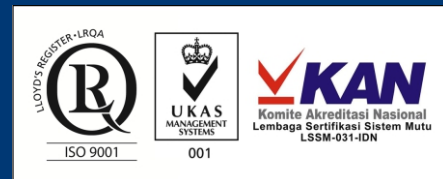
Factory I :
Kawasan Industri Jababeka I
Jl. Jababeka V Blok U No. 1, Cikarang
Bekasi - Jawa Barat 17530 Indonesia

Factory II :
Kawasan Ngoro Industrial Park Blok F2 No.2,
Ngoro - Mojokerto
Jawa Timur 61385 Indonesia

Branch Office

: BANDUNG
Jalan Kejaksaan No. 28, Bandung 40111
Phone # (62-22) 423.1849, (62-22) 423.6489
Fax # (62-22) 420.8314
E-mail : unionbdg@unionmetal.co.id

SURABAYA
Jl. Mayjend Sungkono 37A, Surabaya 60225
Phone # (62-31) 5622.234,
Fax # (62-31) 99532.234
E-mail : unionsby@unionmetal.co.id



A UNION SAMPOERNA CO.