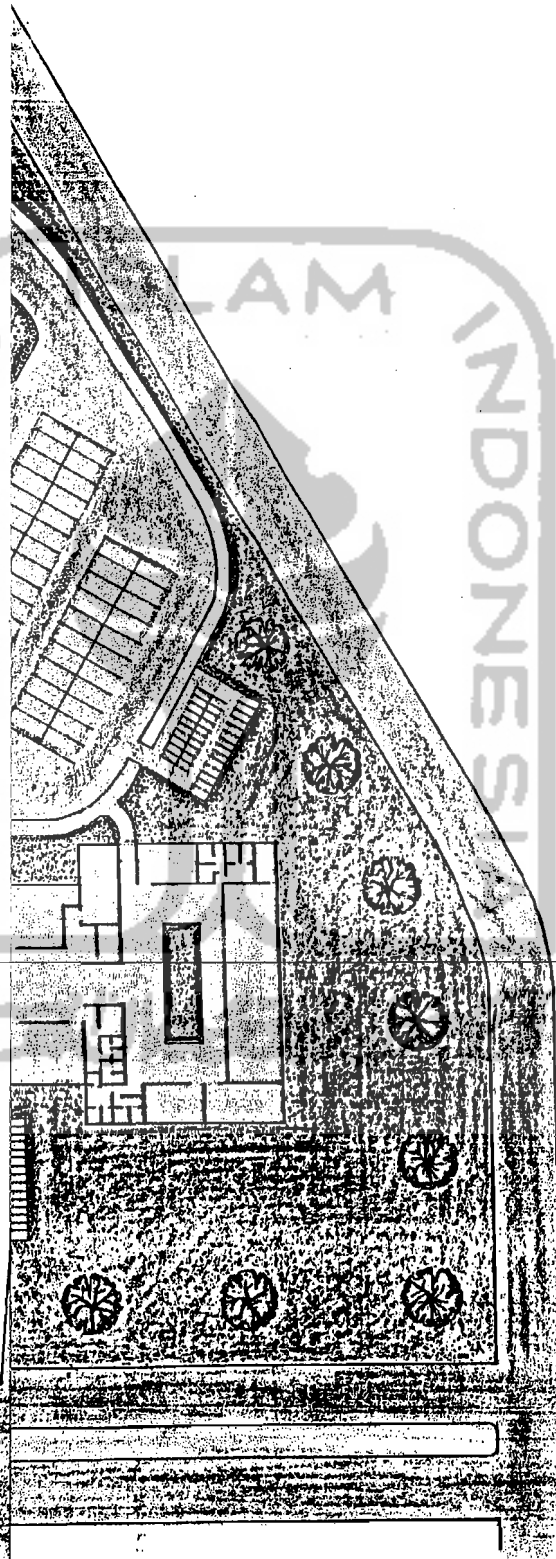

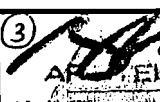
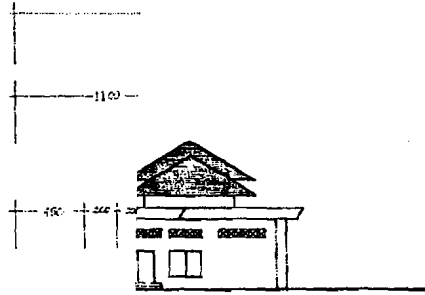


الجامعة الإسلامية في إندونيسيا

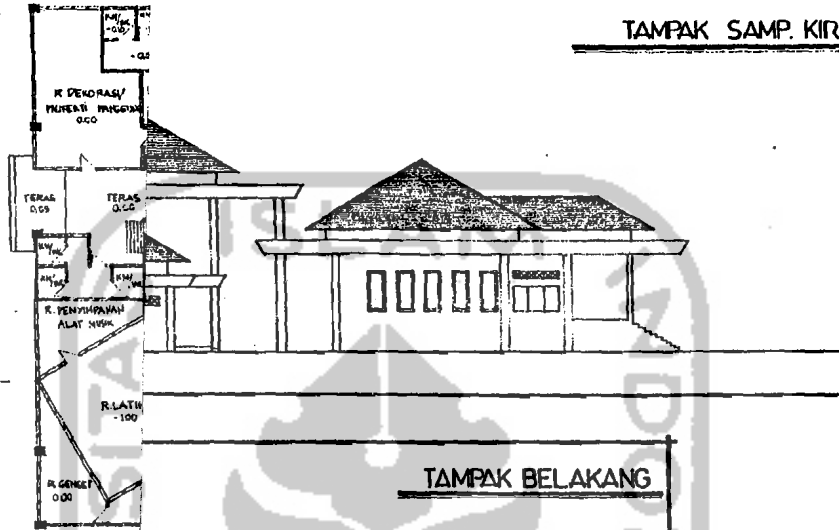


| TUGAS A | JUDUL GAMBAR | SKALA | LEMBAR KE | JUMLAH LEMBAR | PENGESEHAN |
|--|--------------|--------|-----------|---------------|---|
|  <p>JURUSAN ARS FAKULTAS TEKNIK SIPIL UNIVERSITAS ISLAM</p> | SITE PLAN | 1: 200 | | | <p>3  ARHITEKTUR 18 JAN 2005</p> |

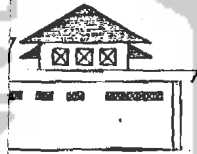
TAMPAK DEPAN



TAMPAK SAMP. KIRI



TAMPAK BELAKANG



TAMPAK SAMP. KANAN



TUGA
 JURUSAN
 FAKULTAS TEKNIK S
 UNIVERSITAS

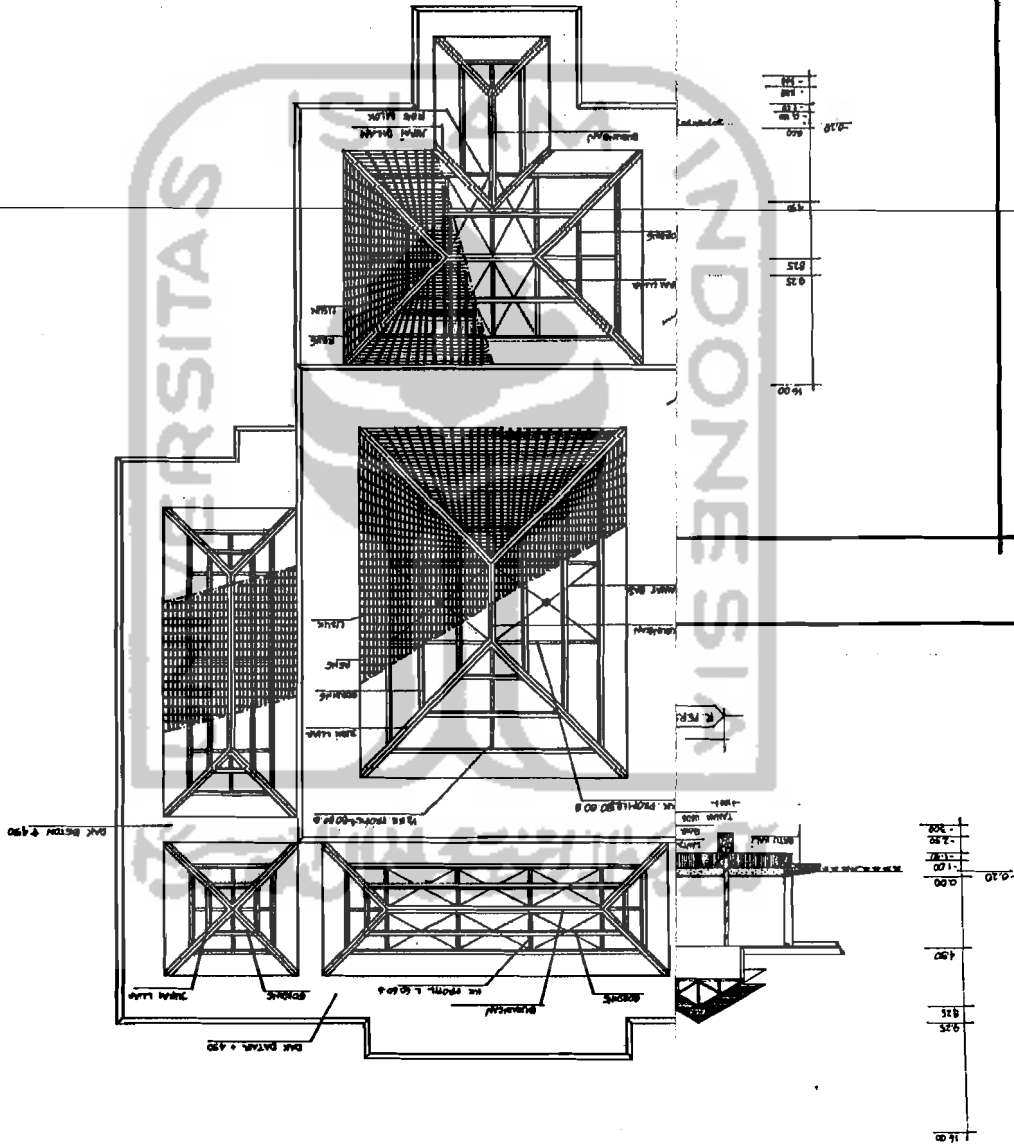
| JUDUL GAMBAR | SKALA | LEMBAR KE | JUMLAH LEMBAR | PENGESAHAN |
|--------------|-------|-----------|---------------|------------|
| DENAH TAMPAK | 1:200 | | | |

Handwritten signature

| | | | | | |
|---|---------------------|---------|-----------|---------------|-----------|
| JURUSAN FAKULTAS TEKNIK SIPIL DAN PERENCANAAN UNIVERSITAS ISLAM INDONESIA | POTONGAN RENC. ATAP | 1 : 200 | LEMBAR KE | JUMLAH LEMBAR | PENGSAHAN |
| TUGAS | JUDUL GAMBAR | SKALA | LEMBAR KE | JUMLAH LEMBAR | PENGSAHAN |



RENC. ATAP



1 JAN 20
ARQUITUR

| | | | | |
|-----------------------|-------|-----------|---------------|------------|
| JUDUL GAMBAR | SKALA | LEMBAR KE | JUMLAH LEMBAR | PENGESAHAN |
| DENAH TAMPAK POTONGAN | 1:200 | | | |

TUGAS AKU
JURUSAN ARSITEKTUR
FAKULTAS TEKNIK SIPIL DAN
UNIVERSITAS ISLAM
INDONESIA

