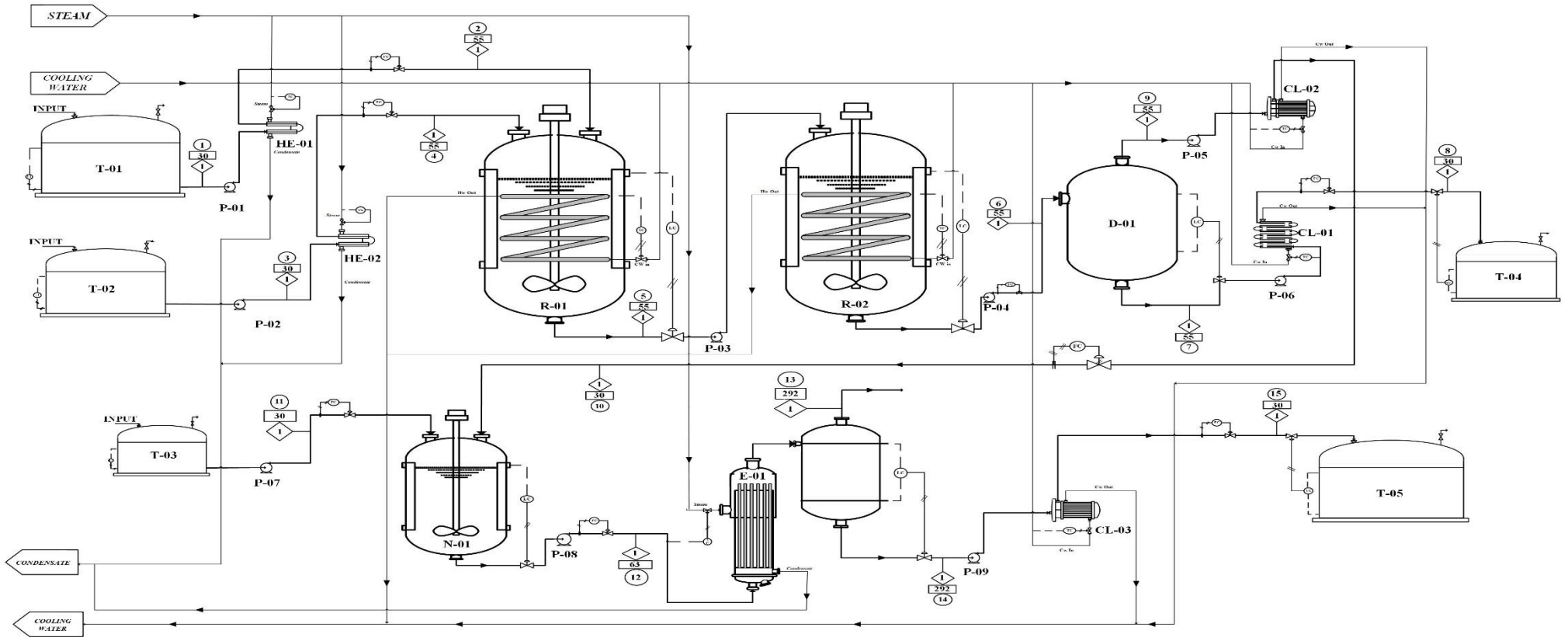


LAMPIRAN C

PROCESS ENGINEERING FLOW DIAGRAM PRA RANCANGAN PABRIK *LINEAR ALKYL*BENZENE SULFONATE DARI ALKYL BENZENE DAN OLEUM 20 % DENGAN PROSES SULFONASI KAPASITAS 32.000 TON/TAHUN



Komponen	Ampas (Kg/Jam)														
	Ampas 1	Ampas 2	Ampas 3	Ampas 4	Ampas 5	Ampas 6	Ampas 7	Ampas 8	Ampas 9	Ampas 10	Ampas 11	Ampas 12	Ampas 13	Ampas 14	Ampas 15
$C_{10}H_{12}C_{12}H_{18}$	2.677.6385	2.677.6385			505.1497	107.1055			107.1055	107.1055		107.1055		107.1055	107.1055
$C_{10}H_{12}C_{12}H_{18}$	37.4761	37.4761			37.4761	37.4761			37.4761	37.4761		37.4761	11.2428	26.2333	26.2333
$C_{12}H_{18}C_{14}H_{18}$	0.5431	0.5431			0.5431	0.5431			0.5431	0.5431		0.5431		0.5431	0.5431
H_2SO_4			3.347.0481	3.347.0481											
$C_{10}H_{12}C_{12}H_{18}SO_2$					2.878.9891	3.406.4786			3.406.4786	3.406.4786					
H_2SO_4					2.450.6563	2.450.6563	2.401.6132	2.401.6132	49.0131	49.0131					
SO_3					129.4453										
H_2O					60.4461	60.4461	49.0131	49.0131	11.4330	11.4330	496.1488	713.6744	514.5350	199.1394	199.1394
$NaOH$											457.9855				
$C_{10}H_{12}C_{12}H_{18}SO_3Na$											3.636.3636			3.636.3636	
Na_2SO_4											71.0190			71.0190	
Total	2.715.6577	2.715.6577	3.347.0481	3.347.0481	6.062.7057	6.062.7057	2.450.6563	2.450.6563	3.612.0494	3.612.0494	954.1324	4.566.1818	525.7778	4.040.4040	4.040.4040

ALAT	KETERANGAN
T	Tangki Penyimpanan
P	Pompa
HE	Heater
R	Reaktor
D	Dekanter
CL	Cooler
N	Neutralizer
E	Evaporator

SIMBOL	KETERANGAN
(FC)	Flow Controller
(LC)	Level Controller
(LI)	Level Indicator
(TC)	Temperature Controller
Nomor Ampas	Selain C
(V)	Tekanan, atm
(CV)	Control Valve
(E)	Electric Connection
(P)	Piping
(S)	Steam
(CW)	Udara Tekan

UNIVERSITAS ISLAM INDONESIA

JURUSAN TEKNIK KIMIA
FAKULTAS TEKNOLOGI INDUSTRI
UNIVERSITAS ISLAM INDONESIA
YOGYAKARTA

PROSES ENGINEERING FLOW DIAGRAM
PABRIK *LINEAR ALKYL*BENZENE SULFONATE DARI ALKYL BENZENE DAN OLEUM 20 %
DENGAN PROSES SULFONASI KAPASITAS 32000 TON/TAHUN

Dibimbing Oleh:
1. KURNI WASKITOH
2. FANI AMALIA PUTRI

(14521080)
(14521173)

Dosen Pembimbing :
Prof. Dr. Zaenul Salamah, M.Si.