

LAMPIRAN

I. Hasil Olah Data

1. Hasil Olah Statistik Deskriptif

	DEP_GROWTH	LDR	NPL	ROA	SIZE	BI_RATE	D_BANK
Mean	0.029344	0.863198	0.014309	0.020120	13.84109	0.065044	0.789474
Median	0.025000	0.879600	0.012800	0.017600	13.95000	0.072500	1.000000
Maximum	0.632000	1.115000	0.063700	0.071700	15.03000	0.077500	1.000000
Minimum	-0.261700	0.504100	0.000000	-0.048900	12.59000	0.042500	0.000000
Std. Dev.	0.068402	0.115878	0.010337	0.012036	0.669229	0.011898	0.408220
Skewness	1.698127	-0.655459	1.066229	0.186281	-0.133614	-0.712471	-1.420094
Kurtosis	17.73640	3.670366	4.340952	5.872573	1.927452	1.867964	3.016667
Jarque-Bera	4345.755	41.28037	120.8295	159.7686	23.26454	63.06534	127.7266
Probability	0.000000	0.000000	0.000000	0.000000	0.000009	0.000000	0.000000
Sum	13.41010	394.4813	6.539000	9.194700	6325.380	29.72500	300.0000
Sum Sq. Dev.	2.133553	6.122998	0.048728	0.066053	204.2279	0.064549	63.15789
Observations	460	460	460	460	460	460	460

2. Hasil Olah Data Hipotesis Pertama (Model 1)

Dependent Variable: DEP_GROWTH
 Method: Panel Least Squares
 Date: 08/11/18 Time: 16:28
 Sample: 2013Q1 2017Q4
 Periods included: 20
 Cross-sections included: 23
 Total panel (unbalanced) observations: 457

Variable	Coefficient	Std. Error	t-Statistic	Prob.
C	-1.245614	0.456074	-2.731169	0.0066
LDR	-0.438157	0.068985	-6.351523	0.0000
NPL	-1.116454	0.458844	-2.433190	0.0154
ROA	1.389911	0.493720	2.815182	0.0051
SIZE	0.114832	0.032524	3.530698	0.0005
BI_RATE	0.796098	0.279432	2.848992	0.0046

Effects Specification

Cross-section fixed (dummy variables)

R-squared	0.206836	Mean dependent var	0.029344
Adjusted R-squared	0.156916	S.D. dependent var	0.068402
S.E. of regression	0.062806	Akaike info criterion	-2.638205
Sum squared resid	1.692258	Schwarz criterion	-2.385489
Log likelihood	630.8297	Hannan-Quinn criter.	-2.538663
F-statistic	4.143393	Durbin-Watson stat	2.240314
Prob(F-statistic)	0.000000		

3. Hasil Olah Data Hipotesis Pertama (Model 2)

Dependent Variable: DEP_GROWTH
 Method: Panel EGLS (Cross-section weights)
 Date: 08/11/18 Time: 16:55
 Sample: 2013Q1 2017Q4
 Periods included: 20
 Cross-sections included: 23
 Total panel (unbalanced) observations: 457
 Linear estimation after one-step weighting matrix

Variable	Coefficient	Std. Error	t-Statistic	Prob.
C	0.127234	0.058199	2.186183	0.0293
D_LDR	-0.021799	0.005329	-4.090406	0.0001
D_NPL	-0.015791	0.006097	-2.589927	0.0099
ROA	0.365872	0.224114	1.632524	0.1033
SIZE	-0.007281	0.004057	-1.794717	0.0734
BL_RATE	0.157836	0.219556	0.718888	0.4726

Weighted Statistics

R-squared	0.064498	Mean dependent var	0.032176
Adjusted R-squared	0.054127	S.D. dependent var	0.068391
S.E. of regression	0.066966	Sum squared resid	2.022471
F-statistic	6.218835	Durbin-Watson stat	2.049127
Prob(F-statistic)	0.000014		

Unweighted Statistics

R-squared	0.039249	Mean dependent var	0.029344
Sum squared resid	2.049812	Durbin-Watson stat	2.030804

2. Hasil Olah Data Hipotesis Ke dua

Dependent Variable: DEP_GROWTH
 Method: Panel Least Squares
 Date: 08/11/18 Time: 16:33
 Sample: 2013Q1 2017Q4
 Periods included: 20
 Cross-sections included: 23
 Total panel (unbalanced) observations: 457

Variable	Coefficient	Std. Error	t-Statistic	Prob.
C	-1.309981	0.456331	-2.870680	0.0043
LDR	-0.487141	0.073458	-6.631573	0.0000
NPL	-1.329255	0.468897	-2.834858	0.0048
LDR*D_BANK	0.315816	0.219611	1.438066	0.1511
NPL*D_BANK	3.358177	1.687373	1.990181	0.0472
ROA	1.560224	0.497011	3.139217	0.0018
SIZE	0.118226	0.032632	3.622991	0.0003
BI_RATE	0.814661	0.278582	2.924316	0.0036

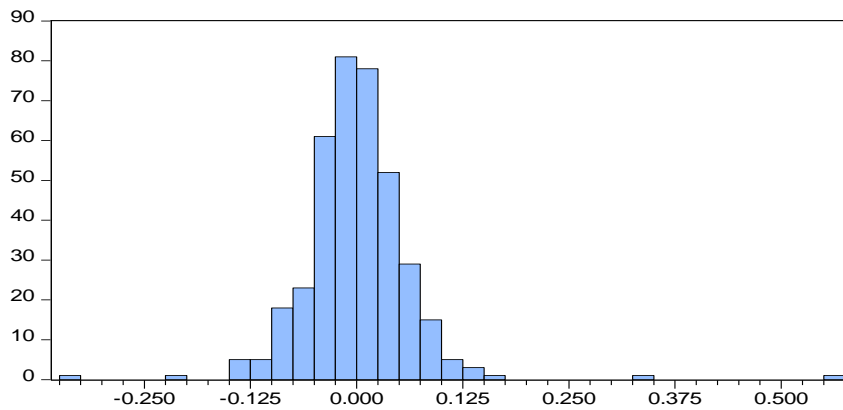
Effects Specification

Cross-section fixed (dummy variables)

R-squared	0.218390	Mean dependent var	0.029344
Adjusted R-squared	0.165306	S.D. dependent var	0.068402
S.E. of regression	0.062493	Akaike info criterion	-2.644126
Sum squared resid	1.667607	Schwarz criterion	-2.373359
Log likelihood	634.1827	Hannan-Quinn criter.	-2.537474
F-statistic	4.114068	Durbin-Watson stat	2.232404
Prob(F-statistic)	0.000000		

II. Uji Asumsi Klasik

1. Uji Normalitas



Series: Standardized Residuals	
Sample 2013Q1 2017Q4	
Observations 460	
Mean	4.51e-18
Median	-0.001348
Maximum	0.557234
Minimum	-0.327853
Std. Dev.	0.062676
Skewness	1.816363
Kurtosis	22.32709
Jarque-Bera	6123.272
Probability	0.000000

Kesimpulan : data tidak normal karena probabilitas <0,05

2. Uji Multikolinearitas

	LDR	NPL	ROA	SIZE	BI_RATE
LDR	1.000000	-0.037279	0.108894	0.252925	0.026990
NPL	-0.037279	1.000000	-0.558745	-0.269864	-0.139095
ROA	0.108894	-0.558745	1.000000	0.521676	0.026785
SIZE	0.252925	-0.269864	0.521676	1.000000	-0.079325
BI_RATE	0.026990	-0.139095	0.026785	-0.079325	1.000000

3. Uji Heteroskedasitas

Dependent Variable: RESABS

Method: Panel Least Squares

Date: 07/09/18 Time: 08:32

Sample: 2013Q1 2017Q4

Periods included: 20

Cross-sections included: 19

Total panel (balanced) observations: 460

Variable	Coefficient	Std. Error	t-Statistic	Prob.
C	0.152839	0.063896	2.392003	0.0172
LDR	-0.001185	0.020450	-0.057925	0.9538
NPL	0.025030	0.269831	0.092761	0.9261
ROE	0.009388	0.039707	0.236420	0.8132
SIZE	-0.008507	0.004538	-1.874435	0.0616
BI_RATE	0.106914	0.208120	0.513714	0.6078
R-squared	0.012993	Mean dependent var		0.041670
Adjusted R-squared	-0.000202	S.D. dependent var		0.046768
S.E. of regression	0.046773	Akaike info criterion		-3.271361
Sum squared resid	0.818202	Schwarz criterion		-3.209148
Log likelihood	627.5586	Hannan-Quinn criter.		-3.246674
F-statistic	0.984662	Durbin-Watson stat		1.653596
Prob(F-statistic)	0.426869			

I. Data Penelitian

No.	Nama Perusahaan	Tahun	Dep_growth	NPL	LDR	ROA	BI_Rate	size	D_BANK
1	BNI	2013 (I)	-0.2617	0.0085	0.7327	0.0282	0.0575	14.37	1
		2013 (II)	0.3796	0.0071	0.8400	0.0339	0.0600	14.52	1
		2013 (III)	0.0444	0.0063	0.8469	0.0332	0.0725	14.54	1
		2013 (IV)	0.0595	0.0055	0.8530	0.0336	0.0725	14.57	1
		2014 (I)	-0.0529	0.0061	0.8839	0.0328	0.0750	14.55	1
		2014 (II)	0.1442	0.0055	0.8028	0.0326	0.0750	14.59	1
		2014 (III)	-0.0264	0.0052	0.8574	0.0332	0.0750	14.59	1
		2014 (IV)	0.0100	0.0039	0.8781	0.0349	0.0775	14.59	1
		2015 (I)	-0.0329	0.0047	0.8776	0.0355	0.0750	14.58	1
		2015 (II)	0.0731	0.0078	0.8763	0.0148	0.0750	14.61	1
		2015 (III)	0.0663	0.0068	0.8767	0.0245	0.0750	14.63	1
		2015 (IV)	0.0615	0.0091	0.8777	0.0264	0.0750	14.68	1
		2016 (I)	-0.0012	0.0085	0.8797	0.0303	0.0700	14.68	1
		2016 (II)	0.0543	0.0066	0.9140	0.0216	0.0675	14.70	1
		2016 (III)	0.0257	0.0073	0.9285	0.0251	0.0650	14.73	1
		2016 (IV)	0.0862	0.0044	0.9041	0.0269	0.0475	14.75	1
		2017 (I)	0.0187	0.0056	0.8933	0.0276	0.0475	14.76	1
		2017 (II)	0.0426	0.0066	0.8893	0.0272	0.0475	14.77	1
		2017 (III)	0.0360	0.0079	0.8786	0.0280	0.0475	14.79	1
		2017 (IV)	0.0749	0.0070	0.8558	0.0275	0.0425	14.82	1
2	BRI	2013 (I)	-0.0757	0.0046	0.8962	0.0476	0.0575	14.71	1
		2013 (II)	0.0890	0.0041	0.8925	0.0462	0.0600	14.73	1

		2013 (III)	0.0359	0.0043	0.9088	0.0465	0.0725	14.76	1
		2013 (IV)	0.0696	0.0031	0.8854	0.0503	0.0725	14.78	1
		2014 (I)	-0.0336	0.0047	0.9201	0.0502	0.0750	14.78	1
		2014 (II)	0.0392	0.0057	0.9400	0.0492	0.0750	14.79	1
		2014 (III)	0.1143	0.0046	0.8529	0.0484	0.0750	14.83	1
		2014 (IV)	0.1031	0.0036	0.8168	0.0474	0.0775	14.89	1
		2015 (I)	-0.0211	0.0060	0.8040	0.0399	0.0750	14.89	1
		2015 (II)	-0.0419	0.0066	0.8787	0.0391	0.0750	14.87	1
		2015 (III)	0.0856	0.0059	0.8489	0.0395	0.0750	14.89	1
		2015 (IV)	0.0514	0.0050	0.8688	0.0419	0.0750	14.93	1
		2016 (I)	-0.0311	0.0059	0.8881	0.0365	0.0700	14.92	1
		2016 (II)	0.0535	0.0060	0.9000	0.0368	0.0675	14.94	1
		2016 (III)	0.0143	0.0057	0.9068	0.0360	0.0650	14.95	1
		2016 (IV)	0.0876	0.0109	0.8777	0.0384	0.0475	14.98	1
		2017 (I)	-0.0313	0.0122	0.9315	0.0334	0.0475	14.98	1
		2017 (II)	0.0469	0.0116	0.8976	0.0331	0.0475	14.99	1
		2017 (III)	0.0015	0.0106	0.9040	0.0334	0.0475	15.00	1
		2017 (IV)	0.0927	0.0088	0.8813	0.0369	0.0425	15.03	1
3	Mandiri	2013 (I)	-0.0385	0.0043	0.8095	0.0348	0.0575	14.75	1
		2013 (II)	0.0779	0.0038	0.8275	0.0347	0.0600	14.77	1
		2013 (III)	0.0192	0.0038	0.8565	0.0345	0.0725	14.79	1
		2013 (IV)	0.0865	0.0037	0.8297	0.0366	0.0725	14.81	1
		2014 (I)	-0.0468	0.0045	0.8661	0.0355	0.0750	14.81	1
		2014 (II)	0.0525	0.0047	0.8540	0.0348	0.0750	14.83	1
		2014 (III)	0.0633	0.0046	0.8434	0.0353	0.0750	14.85	1
		2014 (IV)	0.0811	0.0044	0.8220	0.0357	0.0775	14.88	1
		2015 (I)	-0.0132	0.0053	0.8380	0.0354	0.0750	14.89	1

		2015 (II)	0.0468	0.0063	0.8297	0.0321	0.0750	14.91	1
		2015 (III)	-0.0018	0.0074	0.8427	0.0300	0.0750	14.91	1
		2015 (IV)	0.0318	0.0060	0.8705	0.0315	0.0750	14.91	1
		2016 (I)	-0.0372	0.0085	0.8672	0.0258	0.0700	14.90	1
		2016 (II)	0.0589	0.0133	0.8719	0.0215	0.0675	14.93	1
		2016 (III)	-0.0062	0.0104	0.8990	0.0235	0.0650	14.93	1
		2016 (IV)	0.1073	0.0138	0.8586	0.0195	0.0475	14.96	1
		2017 (I)	-0.0493	0.0116	0.8922	0.0238	0.0475	14.96	1
		2017 (II)	0.0422	0.0128	0.8861	0.0261	0.0475	14.97	1
		2017 (III)	-0.0039	0.0085	0.8905	0.0272	0.0475	14.97	1
		2017 (IV)	0.0748	0.0106	0.8811	0.0272	0.0425	14.99	1
4	BTN	2013 (I)	0.1488	0.0383	0.9819	0.0160	0.0575	14.08	1
		2013 (II)	-0.0512	0.0365	1.1058	0.0158	0.0600	14.07	1
		2013 (III)	0.0718	0.0381	1.0904	0.0163	0.0725	14.09	1
		2013 (IV)	0.0262	0.0304	1.0442	0.0179	0.0725	14.12	1
		2014 (I)	0.1228	0.0357	1.0053	0.0139	0.0750	14.14	1
		2014 (II)	-0.0067	0.0383	1.0517	0.0111	0.0750	14.13	1
		2014 (III)	0.0050	0.0363	1.0854	0.0102	0.0750	14.15	1
		2014 (IV)	-0.0251	0.0279	1.0886	0.0112	0.0775	14.16	1
		2015 (I)	0.1031	0.0347	1.0971	0.0153	0.0750	14.17	1
		2015 (II)	0.0475	0.0347	1.0994	0.0155	0.0750	14.19	1
		2015 (III)	0.0849	0.0347	1.0571	0.0150	0.0750	14.22	1
		2015 (IV)	-0.0451	0.0211	1.0878	0.0161	0.0750	14.24	1
		2016 (I)	0.1033	0.0234	1.0898	0.0156	0.0700	14.25	1
		2016 (II)	0.0258	0.0223	1.1097	0.0154	0.0675	14.28	1
		2016 (III)	0.0960	0.0240	1.0430	0.0159	0.0650	14.30	1
		2016 (IV)	0.0039	0.0185	1.0266	0.0176	0.0475	14.33	1

		2017 (I)	0.0620	0.0235	1.0779	0.0148	0.0475	14.33	1
		2017 (II)	0.0038	0.0224	1.1150	0.0152	0.0475	14.35	1
		2017 (III)	0.0641	0.0206	1.0980	0.0156	0.0475	14.37	1
		2017 (IV)	0.0578	0.0166	1.0313	0.0171	0.0425	14.42	1
5	Bank Bukopin	2013 (I)	0.1414	0.0149	0.7668	0.0164	0.0575	13.84	0
		2013 (II)	-0.0531	0.0166	0.7822	0.0186	0.0600	13.83	0
		2013 (III)	-0.0464	0.0163	0.8728	0.0185	0.0725	13.82	0
		2013 (IV)	-0.0014	0.0151	0.8580	0.0175	0.0725	13.82	0
		2014 (I)	0.0591	0.0184	0.8145	0.0188	0.0750	13.84	0
		2014 (II)	0.0347	0.0187	0.8218	0.0194	0.0750	13.84	0
		2014 (III)	0.0526	0.0242	0.7711	0.0166	0.0750	13.87	0
		2014 (IV)	0.0121	0.0207	0.8389	0.0133	0.0775	13.87	0
		2015 (I)	0.0460	0.0203	0.8032	0.0130	0.0750	13.89	0
		2015 (II)	0.0381	0.0216	0.8226	0.0155	0.0750	13.90	0
		2015 (III)	0.0379	0.0220	0.8488	0.0158	0.0750	13.93	0
		2015 (IV)	0.0322	0.0213	0.8634	0.0139	0.0750	13.95	0
		2016 (I)	0.0691	0.0137	0.8179	0.0137	0.0700	13.98	0
		2016 (II)	-0.0538	0.0278	0.9127	0.0147	0.0675	13.96	0
		2016 (III)	0.0110	0.0270	0.9341	0.0150	0.0650	13.97	0
		2016 (IV)	0.0740	0.0279	0.8604	0.0138	0.0475	14.00	0
		2017 (I)	0.1281	0.0305	0.7585	0.0135	0.0475	14.02	0
		2017 (II)	0.0166	0.0322	0.7507	0.0112	0.0475	14.04	0
		2017 (III)	-0.0292	0.0349	0.7865	0.0097	0.0475	14.03	0
		2017 (IV)	-0.0486	0.0637	0.8134	0.0009	0.0425	14.00	0
6	Bank Mega	2013 (I)	-0.2081	0.0210	0.6172	0.0177	0.0575	13.71	0
		2013 (II)	0.0866	0.0207	0.5751	0.0119	0.0600	13.74	0
		2013 (III)	0.0074	0.0200	0.6084	0.0108	0.0725	13.74	0

		2013 (IV)	0.1797	0.0164	0.5741	0.0114	0.0725	13.82	0
		2014 (I)	-0.1355	0.0167	0.6803	0.0202	0.0750	13.76	0
		2014 (II)	0.0519	0.0160	0.6826	0.0183	0.0750	13.79	0
		2014 (III)	0.0491	0.0264	0.6612	0.0264	0.0750	13.78	0
		2014 (IV)	0.0215	0.0134	0.6585	0.0116	0.0775	13.82	0
		2015 (I)	-0.0142	0.0153	0.6656	0.0238	0.0750	13.79	0
		2015 (II)	-0.0148	0.0286	0.6958	0.0196	0.0750	13.80	0
		2015 (III)	-0.0338	0.0192	0.7015	0.0200	0.0750	13.79	0
		2015 (IV)	0.0380	0.0180	0.6505	0.0197	0.0750	13.83	0
		2016 (I)	-0.0398	0.0214	0.6488	0.0207	0.0700	13.82	0
		2016 (II)	-0.0644	0.0194	0.6908	0.0188	0.0675	13.81	0
		2016 (III)	0.0003	0.0235	0.6251	0.0259	0.0650	13.79	0
		2016 (IV)	0.1416	0.0259	0.5535	0.0236	0.0475	13.85	0
		2017 (I)	0.0602	0.0270	0.5606	0.0226	0.0475	13.84	0
		2017 (II)	-0.0257	0.0233	0.5702	0.0208	0.0475	13.86	0
		2017 (III)	0.0587	0.0208	0.5641	0.0225	0.0475	13.89	0
		2017 (IV)	0.0969	0.0141	0.5647	0.0224	0.0425	13.92	0
7	Bank CIMB Niaga	2013 (I)	0.1077	0.0126	0.8372	0.0273	0.0575	14.33	0
		2013 (II)	-0.1050	0.0147	0.9917	0.0281	0.0600	14.29	0
		2013 (III)	0.0937	0.0125	0.8992	0.0275	0.0725	14.32	0
		2013 (IV)	0.0072	0.0161	0.9034	0.0275	0.0725	14.33	0
		2014 (I)	-0.0126	0.0143	0.9418	0.0278	0.0750	14.33	0
		2014 (II)	0.0350	0.0167	0.9383	0.0248	0.0750	14.34	0
		2014 (III)	0.0076	0.0226	0.9453	0.0200	0.0750	14.34	0
		2014 (IV)	0.0382	0.0199	0.9562	0.0160	0.0775	14.36	0
		2015 (I)	0.0374	0.0185	0.9235	0.0019	0.0750	14.37	0
		2015 (II)	0.0206	0.0169	0.9276	0.0020	0.0750	14.38	0

		2015 (III)	-0.0009	0.0149	0.9204	0.0021	0.0750	14.38	0
		2015 (IV)	-0.0389	0.0162	0.9487	0.0021	0.0750	14.37	0
		2016 (I)	-0.0367	0.0194	0.9449	0.0062	0.0700	14.35	0
		2016 (II)	0.0320	0.0195	0.9331	0.0083	0.0675	14.37	0
		2016 (III)	-0.0039	0.0242	0.9276	0.0099	0.0650	14.37	0
		2016 (IV)	0.0037	0.0219	0.9537	0.0119	0.0475	14.37	0
		2017 (I)	-0.0206	0.0213	0.9565	0.0145	0.0475	14.37	0
		2017 (II)	-0.0263	0.0205	0.9914	0.0157	0.0475	14.38	0
		2017 (III)	0.0518	0.0203	0.9199	0.0162	0.0475	14.40	0
		2017 (IV)	0.0059	0.0217	0.9567	0.0167	0.0425	14.42	0
8	Bank BCA	2013 (I)	-0.0063	0.0022	0.7110	0.0303	0.0575	14.64	0
		2013 (II)	0.0286	0.0022	0.7320	0.0342	0.0600	14.65	0
		2013 (III)	0.0579	0.0024	0.7385	0.0366	0.0725	14.68	0
		2013 (IV)	0.0228	0.0019	0.7535	0.0384	0.0725	14.69	0
		2014 (I)	-0.0065	0.0019	0.7711	0.0346	0.0750	14.69	0
		2014 (II)	0.0353	0.0021	0.7551	0.0378	0.0750	14.96	0
		2014 (III)	0.0256	0.0030	0.7588	0.0386	0.0750	14.97	0
		2014 (IV)	0.0368	0.0022	0.7677	0.0386	0.0775	14.73	0
		2015 (I)	-0.0063	0.0023	0.7491	0.0348	0.0750	14.74	0
		2015 (II)	0.0222	0.0025	0.7569	0.0375	0.0750	14.75	0
		2015 (III)	0.0160	0.0027	0.7810	0.0386	0.0750	14.76	0
		2015 (IV)	0.0247	0.0022	0.8106	0.0384	0.0750	14.77	0
		2016 (I)	-0.0068	0.0028	0.7892	0.0357	0.0700	14.77	0
		2016 (II)	0.0428	0.0035	0.7788	0.0386	0.0675	14.79	0
		2016 (III)	0.0051	0.0036	0.7725	0.0399	0.0650	14.81	0
		2016 (IV)	0.0751	0.0031	0.7712	0.0396	0.0475	14.82	0
		2017 (I)	0.0095	0.0038	0.7505	0.0348	0.0475	14.83	0

		2017 (II)	0.0694	0.0040	0.7450	0.0367	0.0475	14.86	0
		2017 (III)	0.0038	0.0043	0.7474	0.0383	0.0475	14.86	0
		2017 (IV)	0.0117	0.0045	0.7822	0.0389	0.0425	14.87	0
9	Bank Danamon	2013 (I)	-0.0418	0.0028	1.0373	0.0239	0.0575	14.10	0
		2013 (II)	0.0427	0.0013	1.0539	0.0336	0.0600	14.11	0
		2013 (III)	0.1007	0.0000	0.9900	0.0310	0.0725	14.15	0
		2013 (IV)	0.0929	0.0000	0.9506	0.0275	0.0725	14.18	0
		2014 (I)	-0.0010	0.0116	0.9412	0.0143	0.0750	14.18	0
		2014 (II)	-0.0106	0.0126	0.9893	0.0493	0.0750	14.19	0
		2014 (III)	0.0521	0.0144	0.9134	0.0376	0.0750	14.21	0
		2014 (IV)	0.0155	0.0134	0.9260	0.0314	0.0775	14.21	0
		2015 (I)	-0.0228	0.0148	0.9274	0.0173	0.0750	14.21	0
		2015 (II)	0.0373	0.0167	0.8957	0.0207	0.0750	14.23	0
		2015 (III)	-0.0367	0.0185	0.9109	0.0176	0.0750	14.21	0
		2015 (IV)	0.0114	0.0198	0.8753	0.0145	0.0750	14.20	0
		2016 (I)	-0.0511	0.0215	0.9016	0.0166	0.0700	14.18	0
		2016 (II)	-0.0454	0.0218	0.9252	0.0247	0.0675	14.16	0
		2016 (III)	-0.0228	0.0240	0.9165	0.0214	0.0650	14.16	0
		2016 (IV)	0.0103	0.0196	0.9100	0.0226	0.0475	14.17	0
		2017 (I)	-0.0392	0.0201	0.9280	0.0348	0.0475	14.17	0
		2017 (II)	0.0441	0.0199	0.8957	0.0336	0.0475	14.18	0
		2017 (III)	-0.0487	0.0203	0.9378	0.0332	0.0475	14.17	0
		2017 (IV)	0.0384	0.0188	0.9329	0.0300	0.0425	14.19	0
10	Bank Mayapada	2013 (I)	0.0574	0.0110	0.8297	0.0342	0.0575	13.26	0
		2013 (II)	0.0756	0.0095	0.8588	0.0301	0.0600	13.29	0
		2013 (III)	0.0500	0.0088	0.8776	0.0290	0.0725	13.33	0
		2013 (IV)	0.1409	0.0064	0.8561	0.0253	0.0725	13.38	0

		2014 (I)	0.0573	0.0206	0.8689	0.0190	0.0750	13.40	0
		2014 (II)	0.1063	0.0060	0.8260	0.0224	0.0750	13.44	0
		2014 (III)	0.1601	0.0057	0.8168	0.0220	0.0750	13.50	0
		2014 (IV)	0.1418	0.0123	0.8125	0.0198	0.0775	13.56	0
		2015 (I)	0.0454	0.0260	0.8336	0.0129	0.0750	13.58	0
		2015 (II)	0.0707	0.0107	0.8479	0.0196	0.0750	13.61	0
		2015 (III)	0.0825	0.0162	0.8173	0.0211	0.0750	13.64	0
		2015 (IV)	0.0639	0.0226	0.8299	0.0210	0.0750	13.67	0
		2016 (I)	0.1074	0.0090	0.8038	0.0254	0.0700	13.72	0
		2016 (II)	0.0000	0.0169	0.8898	0.0248	0.0675	13.72	0
		2016 (III)	0.0265	0.0165	0.9230	0.0220	0.0650	13.73	0
		2016 (IV)	0.1011	0.0122	0.9140	0.0203	0.0475	13.78	0
		2017 (I)	0.1183	0.0096	0.8507	0.0216	0.0475	13.83	0
		2017 (II)	0.0697	0.0189	0.8346	0.0176	0.0475	13.85	0
		2017 (III)	-0.0251	0.0138	0.8897	0.0187	0.0475	13.85	0
		2017 (IV)	0.0400	0.0420	0.9008	0.0130	0.0425	13.87	0
11	Bank BTPN	2013 (I)	0.0322	0.0040	0.8816	0.0480	0.0575	13.80	0
		2013 (II)	0.0186	0.0039	0.9137	0.0438	0.0600	13.81	0
		2013 (III)	0.0250	0.0037	0.9239	0.0482	0.0725	13.82	0
		2013 (IV)	0.0564	0.0038	0.8833	0.0454	0.0725	13.84	0
		2014 (I)	-0.0636	0.0041	0.9544	0.0303	0.0750	13.83	0
		2014 (II)	0.0646	0.0050	0.9492	0.0392	0.0750	13.85	0
		2014 (III)	-0.0139	0.0044	0.9731	0.0369	0.0750	13.84	0
		2014 (IV)	0.0171	0.0038	0.9767	0.0356	0.0775	13.86	0
		2015 (I)	0.0174	0.0042	0.9851	0.0351	0.0750	13.86	0
		2015 (II)	0.0438	0.0045	0.9772	0.0329	0.0750	13.88	0
		2015 (III)	0.0364	0.0041	0.9647	0.0317	0.0750	13.88	0

		2015 (IV)	0.0134	0.0042	0.9725	0.0297	0.0750	13.88	0
		2016 (I)	0.0216	0.0044	0.9601	0.0267	0.0700	13.90	0
		2016 (II)	0.0455	0.0044	0.9457	0.0279	0.0675	13.91	0
		2016 (III)	0.0050	0.0043	0.9595	0.0318	0.0650	13.91	0
		2016 (IV)	0.0034	0.0038	0.9542	0.0306	0.0475	13.93	0
		2017 (I)	0.0404	0.0038	0.9432	0.0306	0.0475	13.98	0
		2017 (II)	0.0033	0.0049	0.9541	0.0230	0.0475	13.95	0
		2017 (III)	-0.0005	0.0049	0.9459	0.0217	0.0475	13.93	0
		2017 (IV)	-0.0327	0.0045	0.9662	0.0119	0.0425	13.94	0
12	PANIN	2013 (I)	0.0364	0.0039	0.8692	0.0188	0.0575	14.17	0
		2013 (II)	0.0048	0.0029	0.8896	0.0194	0.0600	14.16	0
		2013 (III)	0.0820	0.0026	0.8975	0.0195	0.0725	14.16	0
		2013 (IV)	-0.0801	0.0039	0.8692	0.0188	0.0725	14.17	0
		2014 (I)	0.0950	0.0075	0.8913	0.0205	0.0750	14.18	0
		2014 (II)	0.0318	0.0071	0.9145	0.0224	0.0750	14.20	0
		2014 (III)	0.0146	0.0048	0.9050	0.0207	0.0750	14.21	0
		2014 (IV)	0.0038	0.0046	0.9051	0.0179	0.0775	14.20	0
		2015 (I)	-0.0181	0.0042	0.9224	0.0174	0.0750	14.19	0
		2015 (II)	-0.0081	0.0041	0.9640	0.0161	0.0750	14.21	0
		2015 (III)	0.0466	0.0052	0.9693	0.0122	0.0750	14.23	0
		2015 (IV)	-0.0080	0.0042	0.9422	0.0127	0.0750	14.23	0
		2016 (I)	-0.0022	0.0050	0.9371	0.0168	0.0700	14.23	0
		2016 (II)	0.0456	0.0051	0.9562	0.0157	0.0675	14.25	0
		2016 (III)	-0.0036	0.0064	0.9374	0.0159	0.0650	14.25	0
		2016 (IV)	0.0670	0.0074	0.9007	0.0168	0.0475	14.26	0
		2017 (I)	0.0185	0.0073	0.8658	0.0188	0.0475	14.28	0
		2017 (II)	-0.0364	0.0072	0.9330	0.0178	0.0475	14.29	0

		2017 (III)	0.0258	0.0072	0.9120	0.0184	0.0475	14.29	0
		2017 (IV)	0.0110	0.0077	0.9639	0.0161	0.0425	14.29	0
13	Maybank	2013 (I)	0.0350	0.0059	0.8255	0.0131	0.0575	14.06	0
		2013 (II)	0.0165	0.0073	0.8500	0.0142	0.0600	14.06	0
		2013 (III)	0.0537	0.0104	0.8642	0.0150	0.0725	14.09	0
		2013 (IV)	0.1014	0.0160	0.8704	0.0153	0.0725	14.13	0
		2014 (I)	-0.0334	0.0146	0.8891	0.0059	0.0750	14.13	0
		2014 (II)	0.0249	0.0197	0.9080	0.0048	0.0750	14.14	0
		2014 (III)	-0.0296	0.0182	0.9113	0.0017	0.0750	14.14	0
		2014 (IV)	-0.0151	0.0041	0.9267	0.0041	0.0775	14.13	0
		2015 (I)	0.0182	0.0195	0.9189	0.0072	0.0750	14.15	0
		2015 (II)	0.0187	0.0243	0.8971	0.0052	0.0750	14.15	0
		2015 (III)	0.0288	0.0279	0.8869	0.0051	0.0750	14.16	0
		2015 (IV)	0.0411	0.0260	0.8921	0.0070	0.0750	14.17	0
		2016 (I)	-0.0219	0.0258	0.8755	0.0135	0.0700	14.18	0
		2016 (II)	-0.0209	0.0248	0.9031	0.0130	0.0675	14.18	0
		2016 (III)	0.0065	0.0279	0.8869	0.0051	0.0650	14.16	0
		2016 (IV)	0.0247	0.0237	0.8812	0.0123	0.0475	14.19	0
		2017 (I)	-0.0233	0.0198	0.8562	0.0117	0.0475	14.19	0
		2017 (II)	0.0076	0.0212	0.8776	0.0125	0.0475	14.20	0
		2017 (III)	-0.0113	0.0257	0.8763	0.0137	0.0475	14.19	0
		2017 (IV)	-0.0017	0.0183	0.8812	0.0123	0.0425	14.20	0
14	BACA (Capital)	2013 (I)	0.0199	0.0180	0.5986	0.0152	0.0575	12.76	0
		2013 (II)	0.0082	0.0180	0.5986	0.0152	0.0600	12.77	0
		2013 (III)	0.0523	0.0021	0.6743	0.0170	0.0725	12.78	0
		2013 (IV)	0.1399	0.0019	0.6335	0.0159	0.0725	12.85	0
		2014 (I)	0.0268	0.0025	0.6261	0.0137	0.0750	12.87	0

		2014 (II)	-0.0121	0.0024	0.6883	0.0132	0.0750	12.85	0
		2014 (III)	0.1108	0.0023	0.6797	0.0124	0.0750	12.89	0
		2014 (IV)	0.2217	0.0024	0.5813	0.0133	0.0775	12.97	0
		2015 (I)	0.1095	0.0019	0.5831	0.0133	0.0750	13.01	0
		2015 (II)	0.0883	0.0018	0.6116	0.0123	0.0750	13.05	0
		2015 (III)	0.0017	0.0019	0.5873	0.0113	0.0750	13.05	0
		2015 (IV)	0.1028	0.0075	0.5578	0.0110	0.0750	13.08	0
		2016 (I)	-0.0107	0.0083	0.6219	0.0087	0.0700	13.10	0
		2016 (II)	-0.0169	0.0083	0.6219	0.0139	0.0675	13.11	0
		2016 (III)	0.0452	0.0126	0.5986	0.0146	0.0650	13.12	0
		2016 (IV)	0.0928	0.0294	0.5534	0.0100	0.0475	13.15	0
		2017 (I)	0.0046	0.0302	0.5608	0.0155	0.0475	13.15	0
		2017 (II)	0.0817	0.0297	0.5041	0.0122	0.0475	13.18	0
		2017 (III)	0.0137	0.0259	0.5142	0.0076	0.0475	13.19	0
		2017 (IV)	0.0655	0.0243	0.5061	0.0079	0.0425	13.21	0
15	Bank Saudara	2013 (I)	-0.1023	0.0147	0.9723	0.0240	0.0575	12.85	0
		2013 (II)	0.0530	0.0211	0.9725	0.0212	0.0600	12.86	0
		2013 (III)	0.0794	0.0218	0.9464	0.0245	0.0725	12.90	0
		2013 (IV)	0.0706	0.0178	0.9059	0.0223	0.0725	12.92	0
		2014 (I)	0.0223	0.0197	0.9057	0.0053	0.0750	12.92	0
		2014 (II)	0.0005	0.0198	0.8796	0.0034	0.0750	12.92	0
		2014 (III)	-0.0044	0.0221	0.9418	0.0044	0.0750	12.92	0
		2014 (IV)	0.6320	0.0181	1.0120	0.0281	0.0775	13.22	0
		2015 (I)	0.1197	0.0180	1.0224	0.0240	0.0750	13.26	0
		2015 (II)	-0.0371	0.0175	1.0418	0.0211	0.0750	13.26	0
		2015 (III)	0.1223	0.0145	0.9766	0.0184	0.0750	13.29	0
		2015 (IV)	0.0489	0.0126	0.9722	0.0194	0.0750	13.30	0

		2016 (I)	0.0931	0.0113	0.9137	0.0140	0.0700	13.33	0
		2016 (II)	-0.0702	0.0106	1.0363	0.0168	0.0675	13.32	0
		2016 (III)	0.0545	0.0102	1.0160	0.0188	0.0650	13.33	0
		2016 (IV)	-0.0323	0.0098	1.1045	0.0193	0.0475	13.35	0
		2017 (I)	0.1200	0.0084	1.0119	0.0281	0.0475	13.39	0
		2017 (II)	0.0141	0.0130	1.0334	0.0233	0.0475	13.38	0
		2017 (III)	0.0186	0.0144	1.0362	0.0221	0.0475	13.42	0
		2017 (IV)	-0.0166	0.0090	1.1107	0.0237	0.0425	13.43	0
16	BANK SINARMAS (BSIM)	2013 (I)	-0.0234	0.0289	0.7993	0.0180	0.0575	13.18	0
		2013 (II)	0.0216	0.0321	0.8021	0.0183	0.0600	13.19	0
		2013 (III)	0.1208	0.0236	0.7741	0.0179	0.0725	13.23	0
		2013 (IV)	-0.0383	0.0212	0.7872	0.0171	0.0725	13.24	0
		2014 (I)	0.0048	0.0121	0.7977	0.0101	0.0750	13.25	0
		2014 (II)	0.1558	0.0119	0.7251	0.0111	0.0750	13.30	0
		2014 (III)	0.0191	0.0155	0.7694	0.0108	0.0750	13.30	0
		2014 (IV)	-0.0063	0.0256	0.8388	0.0102	0.0775	13.33	0
		2015 (I)	-0.0117	0.0200	0.8056	0.0110	0.0750	13.33	0
		2015 (II)	0.1511	0.0180	0.7892	0.0081	0.0750	13.38	0
		2015 (III)	0.2115	0.0162	0.7656	0.0113	0.0750	13.45	0
		2015 (IV)	-0.0614	0.0299	0.7804	0.0095	0.0750	13.45	0
		2016 (I)	0.0825	0.0211	0.7453	0.0181	0.0700	13.46	0
		2016 (II)	-0.0928	0.0291	0.8700	0.0170	0.0675	13.45	0
		2016 (III)	0.0215	0.0246	0.8474	0.0188	0.0650	13.45	0
		2016 (IV)	0.1269	0.0147	0.7747	0.0172	0.0475	13.49	0
		2017 (I)	0.0336	0.0240	0.7850	0.0131	0.0475	13.50	0
		2017 (II)	0.0178	0.0280	0.7415	0.0095	0.0475	13.53	0
		2017 (III)	-0.0146	0.0250	0.7803	0.0098	0.0475	13.51	0

		2017 (IV)	-0.1022	0.0234	0.8057	0.0126	0.0425	13.48	0
17	BANK VICTORIA	2013 (I)	0.0812	0.0000	0.6857	0.0213	0.0575	13.16	0
		2013 (II)	0.0859	0.0004	0.7481	0.0242	0.0600	13.21	0
		2013 (III)	-0.0194	0.0000	0.7747	0.0241	0.0725	13.21	0
		2013 (IV)	0.1281	0.0000	0.7402	0.0210	0.0725	13.26	0
		2014 (I)	-0.0084	0.0024	0.7497	0.0124	0.0750	13.26	0
		2014 (II)	0.0492	0.0090	0.7671	0.0133	0.0750	13.28	0
		2014 (III)	0.0434	0.0111	0.7317	0.0108	0.0750	13.29	0
		2014 (IV)	0.0546	0.0261	0.7025	0.0080	0.0775	13.30	0
		2015 (I)	0.0382	0.0496	0.6469	0.0093	0.0750	13.30	0
		2015 (II)	-0.1500	0.0357	0.7772	0.0097	0.0750	13.27	0
		2015 (III)	0.0155	0.0246	0.7740	0.0094	0.0750	13.31	0
		2015 (IV)	0.1824	0.0387	0.7017	0.0065	0.0750	13.34	0
		2016 (I)	0.0433	0.0468	0.6908	0.0072	0.0700	13.36	0
		2016 (II)	0.0999	0.0310	0.6685	0.0045	0.0675	13.38	0
		2016 (III)	-0.0562	0.0309	0.6929	0.0041	0.0650	13.36	0
		2016 (IV)	0.0506	0.0237	0.6838	0.0052	0.0475	13.39	0
		2017 (I)	0.0304	0.0230	0.6450	0.0135	0.0475	13.41	0
		2017 (II)	0.0342	0.0186	0.6801	0.0116	0.0475	13.41	0
		2017 (III)	-0.0080	0.0229	0.6971	0.0106	0.0475	13.43	0
		2017 (IV)	0.0067	0.0232	0.7025	0.0064	0.0425	13.43	0
18	BRI AGRONIAGA	2013 (I)	0.0116	0.0192	0.8637	0.0124	0.0575	12.60	0
		2013 (II)	0.0576	0.0140	0.9065	0.0175	0.0600	12.62	0
		2013 (III)	0.0552	0.0143	0.9466	0.0222	0.0725	12.67	0
		2013 (IV)	0.1949	0.0095	0.8711	0.0166	0.0725	12.71	0
		2014 (I)	-0.0228	0.0102	0.9328	0.0154	0.0750	12.71	0
		2014 (II)	0.1735	0.0114	0.8426	0.0156	0.0750	12.76	0

		2014 (III)	0.0500	0.0116	0.8976	0.0137	0.0750	12.77	0
		2014 (IV)	0.0494	0.0132	0.8849	0.0153	0.0775	12.81	0
		2015 (I)	0.0921	0.0184	0.8587	0.0148	0.0750	12.84	0
		2015 (II)	0.0336	0.0162	0.8999	0.0165	0.0750	12.85	0
		2015 (III)	-0.0197	0.0151	0.9641	0.0140	0.0750	12.89	0
		2015 (IV)	0.1912	0.0132	0.8715	0.0155	0.0750	12.92	0
		2016 (I)	-0.0055	0.0139	0.9173	0.0191	0.0700	12.92	0
		2016 (II)	0.1272	0.0207	0.9101	0.0151	0.0675	12.97	0
		2016 (III)	0.0812	0.0177	0.9090	0.0162	0.0650	13.02	0
		2016 (IV)	0.1090	0.0136	0.8825	0.0149	0.0475	13.06	0
		2017 (I)	0.0787	0.0139	0.8604	0.0164	0.0475	13.08	0
		2017 (II)	0.0342	0.0226	0.8890	0.0115	0.0475	13.10	0
		2017 (III)	-0.0013	0.0186	0.9655	0.0145	0.0475	13.15	0
		2017 (IV)	0.2088	0.0100	0.8800	0.0100	0.0425	13.21	0
19	OCBC NISP	2013 (I)	-0.0254	0.0041	0.9022	0.0163	0.0575	13.91	0
		2013 (II)	-0.0276	0.0036	0.9799	0.0177	0.0600	13.91	0
		2013 (III)	0.0851	0.0036	0.9763	0.0182	0.0725	13.95	0
		2013 (IV)	0.0981	0.0035	0.9249	0.0181	0.0725	13.99	0
		2014 (I)	-0.0893	0.0038	1.0083	0.0189	0.0750	13.98	0
		2014 (II)	0.1388	0.0066	0.9152	0.0175	0.0750	14.00	0
		2014 (III)	0.1132	0.0067	0.8355	0.0170	0.0750	14.04	0
		2014 (IV)	-0.0871	0.0080	0.9359	0.0179	0.0775	14.01	0
		2015 (I)	0.1299	0.0083	0.8461	0.0177	0.0750	14.06	0
		2015 (II)	0.0222	0.0075	0.8732	0.0170	0.0750	14.08	0
		2015 (III)	0.0788	0.0079	0.8972	0.0160	0.0750	14.12	0
		2015 (IV)	-0.0418	0.0078	0.9805	0.0168	0.0750	14.08	0
		2016 (I)	0.0241	0.0076	0.9470	0.0205	0.0700	14.08	0

		2016 (II)	0.0320	0.0061	0.9285	0.0198	0.0675	14.11	0
		2016 (III)	0.0308	0.0061	0.9213	0.0193	0.0650	14.11	0
		2016 (IV)	0.0847	0.0077	0.8986	0.0185	0.0475	14.14	0
		2017 (I)	0.0562	0.0084	0.8589	0.0206	0.0475	14.18	0
		2017 (II)	-0.0265	0.0086	0.9434	0.0208	0.0475	14.16	0
		2017 (III)	0.0812	0.0093	0.8978	0.0204	0.0475	14.18	0
		2017 (IV)	-0.0093	0.0072	0.9342	0.0196	0.0425	14.19	0
20	BANK PERMATA	2013 (I)	0.0415	0.0041	0.8992	0.0136	0.0575	14.14	0
		2013 (II)	0.0300	0.0039	0.9178	0.0157	0.0600	14.16	0
		2013 (III)	0.0626	0.0032	0.9451	0.0163	0.0725	14.19	0
		2013 (IV)	0.0843	0.0031	0.8926	0.0155	0.0725	14.22	0
		2014 (I)	-0.0232	0.0031	0.9349	0.0117	0.0750	14.22	0
		2014 (II)	0.0723	0.0073	0.9154	0.0125	0.0750	14.25	0
		2014 (III)	0.0786	0.0075	0.8805	0.0125	0.0750	14.27	0
		2014 (IV)	-0.0074	0.0063	0.8913	0.0116	0.0775	14.27	0
		2015 (I)	0.0034	0.0064	0.8879	0.0157	0.0750	14.28	0
		2015 (II)	-0.0255	0.0114	0.8996	0.0116	0.0750	14.27	0
		2015 (III)	0.0500	0.0133	0.8818	0.0087	0.0750	14.29	0
		2015 (IV)	-0.0423	0.0140	0.8784	0.0016	0.0750	14.26	0
		2016 (I)	-0.0595	0.0178	0.8971	-0.0114	0.0700	14.24	0
		2016 (II)	0.0097	0.0267	0.8592	-0.0124	0.0675	14.26	0
		2016 (III)	-0.0723	0.0246	0.8593	-0.0123	0.0650	14.23	0
		2016 (IV)	-0.0036	0.0224	0.8045	-0.0489	0.0475	14.22	0
		2017 (I)	-0.0274	0.0221	0.7458	0.0141	0.0475	14.22	0
		2017 (II)	-0.1817	0.0179	0.8670	0.0100	0.0475	14.16	0
		2017 (III)	0.0503	0.0175	0.8275	0.0077	0.0475	14.18	0
		2017 (IV)	-0.0110	0.0167	0.8754	0.0061	0.0425	14.17	0

21	BANK NUSANTARA PARAHYANGAN	2013 (I)	0.0419	0.0062	0.8658	0.0145	0.0575	12.92	0
		2013 (II)	0.0462	0.0063	0.9104	0.0154	0.0600	12.96	0
		2013 (III)	0.0568	0.0040	0.8505	0.0160	0.0725	12.98	0
		2013 (IV)	0.0001	0.0040	0.8500	0.0150	0.0725	12.99	0
		2014 (I)	-0.0005	0.0032	0.8748	0.0134	0.0750	13.00	0
		2014 (II)	-0.0122	0.0047	0.8492	0.0143	0.0750	12.98	0
		2014 (III)	0.0339	0.0202	0.8404	0.0113	0.0750	13.00	0
		2014 (IV)	-0.0331	0.0141	0.8519	0.0132	0.0775	12.98	0
		2015 (I)	-0.0041	0.0245	0.8649	0.0016	0.0750	12.97	0
		2015 (II)	-0.0440	0.0233	0.8758	0.0065	0.0750	12.96	0
		2015 (III)	-0.0235	0.0275	0.8881	0.0081	0.0750	12.95	0
		2015 (IV)	-0.0187	0.0398	0.9017	0.0099	0.0750	12.94	0
		2016 (I)	0.0184	0.0443	0.8479	0.0019	0.0700	12.94	0
		2016 (II)	-0.0540	0.0389	0.8454	0.0093	0.0675	12.92	0
		2016 (III)	-0.0546	0.0385	0.8520	0.0058	0.0650	12.90	0
		2016 (IV)	-0.0352	0.0407	0.8418	0.0015	0.0475	12.89	0
		2017 (I)	-0.0243	0.0445	0.8435	-0.0015	0.0475	12.88	0
		2017 (II)	-0.0040	0.0460	0.8732	-0.0048	0.0475	12.88	0
		2017 (III)	0.0652	0.0498	0.8054	-0.0104	0.0475	12.90	0
		2017 (IV)	-0.0484	0.0450	0.9399	-0.0090	0.0425	12.88	0
22	BANK MASPION	2013 (I)							0
		2013 (II)							0
		2013 (III)	-0.0400	0.0064	0.8972	0.0107	0.0725	12.59	0
		2013 (IV)	0.0721	0.0061	0.8573	0.0111	0.0725	12.62	0
		2014 (I)	-0.0266	0.0057	0.8944	0.0105	0.0750	12.61	0
		2014 (II)	-0.0344	0.0082	0.9068	0.0100	0.0750	12.60	0
		2014 (III)	0.0349	0.0098	0.8702	0.0099	0.0750	12.61	0

		2014 (IV)	0.2118	0.0070	0.7720	0.0082	0.0775	12.68	0
		2015 (I)	-0.0491	0.0068	0.8050	0.0046	0.0750	12.67	0
		2015 (II)	0.0791	0.0059	0.7895	0.0057	0.0750	12.70	0
		2015 (III)	0.0256	0.0054	0.8514	0.0077	0.0750	12.71	0
		2015 (IV)	0.0170	0.0050	0.9296	0.0110	0.0750	12.73	0
		2016 (I)	0.0422	0.0045	0.8871	0.0150	0.0700	12.75	0
		2016 (II)	-0.0281	0.0058	0.9480	0.0161	0.0675	12.74	0
		2016 (III)	-0.0065	0.0073	0.9224	0.0158	0.0650	12.74	0
		2016 (IV)	-0.0420	0.0081	0.9988	0.0167	0.0475	12.74	0
		2017 (I)	-0.0363	0.0080	1.0108	0.0174	0.0475	12.73	0
		2017 (II)	0.1195	0.0072	0.9259	0.0168	0.0475	12.77	0
		2017 (III)	0.0644	0.0077	0.8412	0.0153	0.0475	12.79	0
		2017 (IV)	-0.0321	0.0138	0.9714	0.0160	0.0425	12.78	0
23	BANK MESTIKA DHARMA	2013 (I)							0
		2013 (II)	-0.0049	0.0100	1.0881	0.0717	0.0600	12.87	0
		2013 (III)	0.0750	0.0128	1.0262	0.0618	0.0725	12.89	0
		2013 (IV)	0.0267	0.0137	1.0130	0.0386	0.0725	12.90	0
		2014 (I)	-0.0272	0.0191	1.0524	0.0544	0.0750	12.90	0
		2014 (II)	0.0468	0.0196	1.0549	0.0459	0.0750	12.91	0
		2014 (III)	0.0357	0.0188	1.0203	0.0427	0.0750	12.92	0
		2014 (IV)	0.0435	0.0152	1.0130	0.0386	0.0775	12.94	0
		2015 (I)	0.0217	0.0174	1.0109	0.0359	0.0750	12.95	0
		2015 (II)	0.0257	0.0179	1.0000	0.0333	0.0750	12.96	0
		2015 (III)	0.0204	0.0148	1.0025	0.0333	0.0750	12.96	0
		2015 (IV)	0.0162	0.0136	1.0150	0.0353	0.0750	12.97	0
		2016 (I)	0.0513	0.0251	0.9586	0.0249	0.0700	13.01	0
		2016 (II)	0.0407	0.0316	0.9053	0.0253	0.0675	13.02	0

		2016 (III)	0.0311	0.0276	0.7889	0.0171	0.0650	13.03	0
		2016 (IV)	-0.0157	0.0218	0.8093	0.0230	0.0475	13.02	0
		2017 (I)	-0.0101	0.0157	0.8497	0.0282	0.0475	13.03	0
		2017 (II)	0.0233	0.0173	0.8184	0.0292	0.0475	13.04	0
		2017 (III)	0.0233	0.0181	0.8134	0.0352	0.0475	13.05	0
		2017 (IV)	0.0397	0.0132	0.8102	0.0319	0.0425	13.07	0